

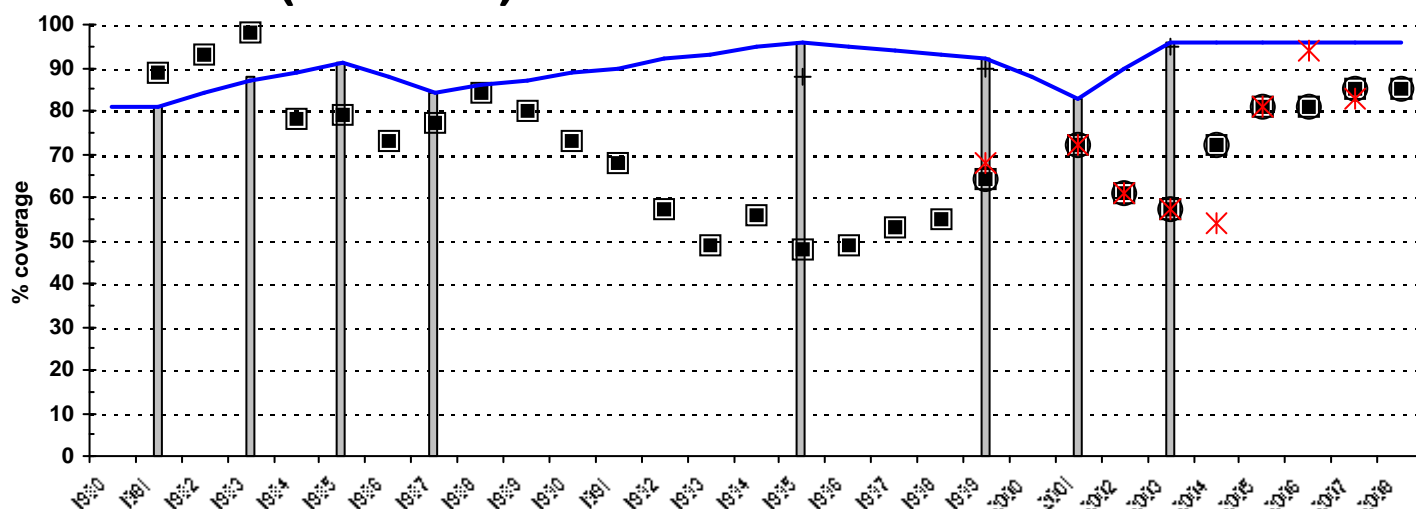
**WHO/UNICEF
Review of National Immunization Coverage
1980-2008**

Lesotho

July, 2009

Lesotho

BCG (1980-2008)



Description of trend

Estimates are based on survey data. WHO/UNICEF recommend conducting a high quality survey to verify reported levels of coverage.

Data presented in chart

Year	WHO/ UNICEF estimate (%) —	Reported to:*		Government official estimate (%) ○	Reported doses administered (%)** ✕	Survey data (%)***	
		WHO (%) □	UNICEF (%) ■			Survey 12-23 months 	Survey <12 months +
1980	81						
1981	81	89	89			81	
1982	84	93	93				
1983	87	98	98			88	
1984	89	78	78				
1985	91	79	79			91	
1986	88	73	73				
1987	84	77	77			84	
1988	86	84	84				
1989	87	80	80				
1990	89	73	73				
1991	90	68	68				
1992	92	57	57				
1993	93	49	49				
1994	95	56	56				
1995	96	48	48			96	88
1996	95	49	49				
1997	94	53	53				
1998	93	55	55				
1999	92	64	64	64	68	92	90
2000	88						
2001	83	72	72	72	72	83	
2002	90	61	61	61	61		
2003	96	57	57	57	57	96	95
2004	96	72	72	72	54		
2005	96	81	81	81	81		
2006	96	81	81	81	94		
2007	96	85	85	85	83		
2008	96	85	85	85			

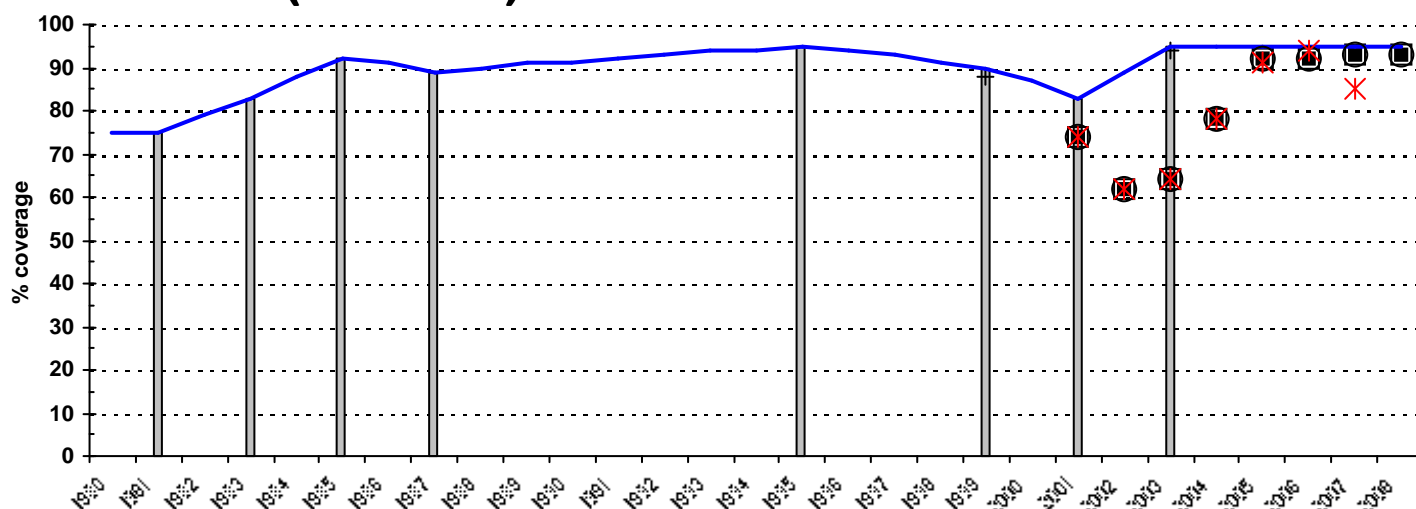
*Prior to 1998 national reports to WHO/UNICEF did not specify whether information was derived from administrative records, surveys or other sources.

**Coverage based on registration of doses administered by health care providers.

***In case more than one survey was implemented in a certain year the highest value is presented. Details of all data are presented in the second section of this report.

Lesotho

DTP1 (1980-2008)



Description of trend

WHO and UNICEF began requesting data on DTP1 coverage in 2001 and have received national reports reflecting DTP1 coverage from 200 onward. Estimates are based on survey data. WHO/UNICEF recommend conducting a high quality survey to verify reported levels of coverage.

Data presented in chart

Year	WHO/ UNICEF estimate (%)	Reported to:*		Government official estimate (%)	Reported doses administered (%)**	Survey data (%)***	
		WHO (%)	UNICEF (%)			Survey 12-23 months	Survey <12 months
1980	75						
1981	75					75	
1982	79						
1983	83					83	
1984	88						
1985	92					92	
1986	91						
1987	89					89	
1988	90						
1989	91						
1990	91						
1991	92						
1992	93						
1993	94						
1994	94						
1995	95					95	
1996	94						
1997	93						
1998	91						
1999	90					90	88
2000	87						
2001	83	74	74	74	74	83	
2002	89	62	62	62	62		
2003	95	64	64	64	64	95	94
2004	95	78	78	78	78		
2005	95	92	92	92	91		
2006	95	92	92	92	94		
2007	95	93	93	93	85		
2008	95	93	93	93			

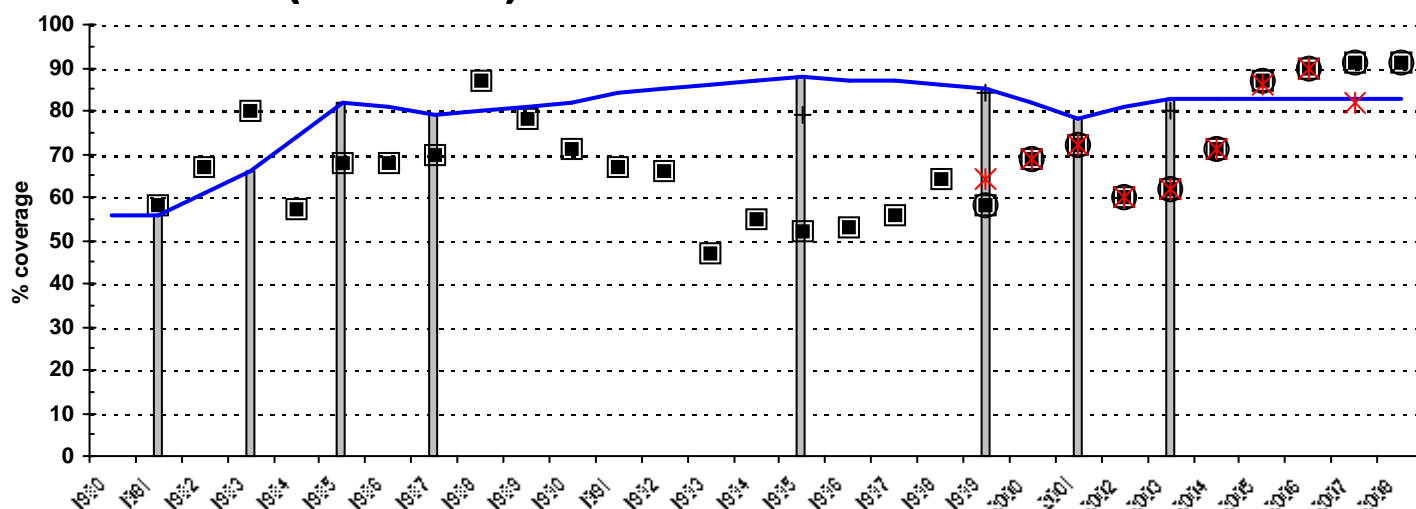
*Prior to 1998 national reports to WHO/UNICEF did not specify whether information was derived from administrative records, surveys or other sources.

**Coverage based on registration of doses administered by health care providers.

***In case more than one survey was implemented in a certain year the highest value is presented. Details of all data are presented in the second section of this report.

Lesotho

DTP3 (1980-2008)



Description of trend

Estimates are based on survey data. WHO/UNICEF recommend conducting a high quality survey to verify reported levels of coverage.

Data presented in chart

Year	WHO/ UNICEF estimate (%) —	Reported to:*		Government official estimate (%) ○	Reported doses administered (%)** ✕	Survey data (%)***	
		WHO (%) □	UNICEF (%) ■			Survey 12-23 months ▮	Survey <12 months +
1980	56						
1981	56	58	58			56	
1982	61	67	67				
1983	66	80	80			66	
1984	74	57	57				
1985	82	68	68			82	
1986	81	68	68				
1987	79	70	70			79	
1988	80	87	87				
1989	81	78	78				
1990	82	71	71				
1991	84	67	67				
1992	85	66	66				
1993	86	47	47				
1994	87	55	55				
1995	88	52	52			88	79
1996	87	53	53				
1997	87	56	56				
1998	86	64	64				
1999	85	58	58	58	64	85	84
2000	82	69	69	69	69		
2001	78	72	72	72	72	78	
2002	81	60	60	60	60		
2003	83	62	62	62	62	83	80
2004	83	71	71	71	71		
2005	83	87	87	87	86		
2006	83	90	90	90	90		
2007	83	91	91	91	82		
2008	83	91	91	91			

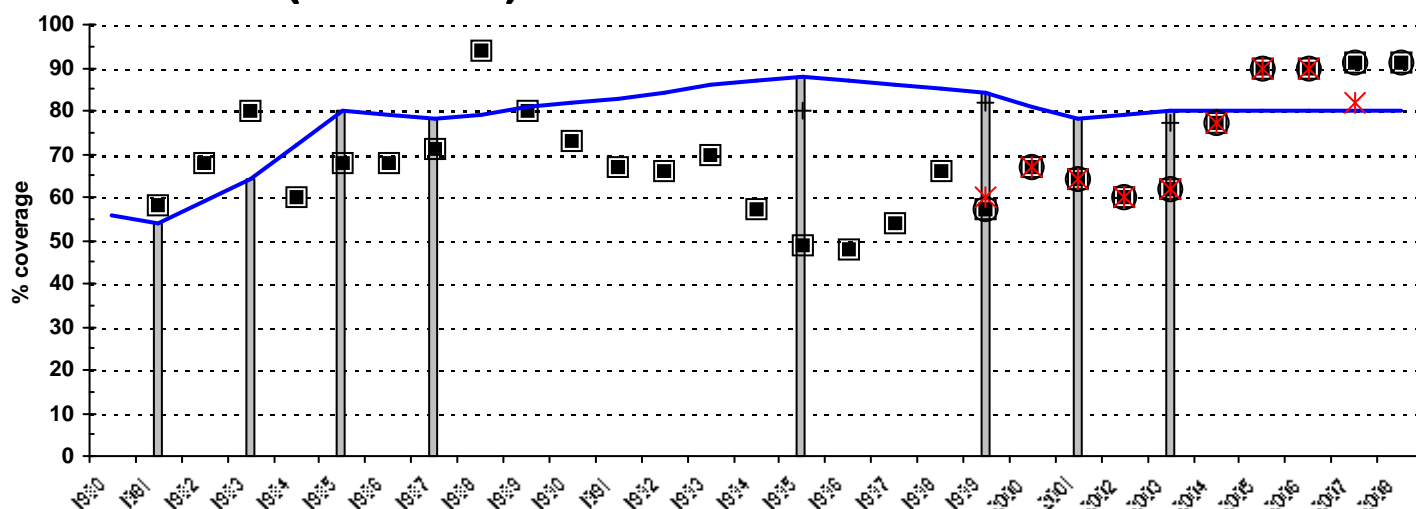
*Prior to 1998 national reports to WHO/UNICEF did not specify whether information was derived from administrative records, surveys or other sources.

**Coverage based on registration of doses administered by health care providers.

***In case more than one survey was implemented in a certain year the highest value is presented. Details of all data are presented in the second section of this report.

Lesotho

Pol3 (1980-2008)



Description of trend

Estimates are based on survey data. WHO/UNICEF recommend conducting a high quality survey to verify reported levels of coverage.

Data presented in chart

Year	WHO/ UNICEF estimate (%)	Reported to:*		Government official estimate (%)	Reported doses administered (%)**	Survey data (%)***	
		WHO (%)	UNICEF (%)			Survey 12-23 months	Survey <12 months
1980	56						
1981	54	58	58			54	
1982	59	68	68				
1983	64	80	80			64	
1984	72	60	60				
1985	80	68	68			80	
1986	79	68	68				
1987	78	71	71			78	
1988	79	94	94				
1989	81	80	80				
1990	82	73	73				
1991	83	67	67				
1992	84	66	66				
1993	86	70	70				
1994	87	57	57				
1995	88	49	49			88	80
1996	87	48	48				
1997	86	54	54				
1998	85	66	66				
1999	84	57	57	57	60	84	82
2000	81	67	67	67	67		
2001	78	64	64	64	64	78	
2002	79	60	60	60	60		
2003	80	62	62	62	62	80	77
2004	80	77	77	77	77		
2005	80	90	90	90	90		
2006	80	90	90	90	90		
2007	80	91	91	91	82		
2008	80	91	91	91			

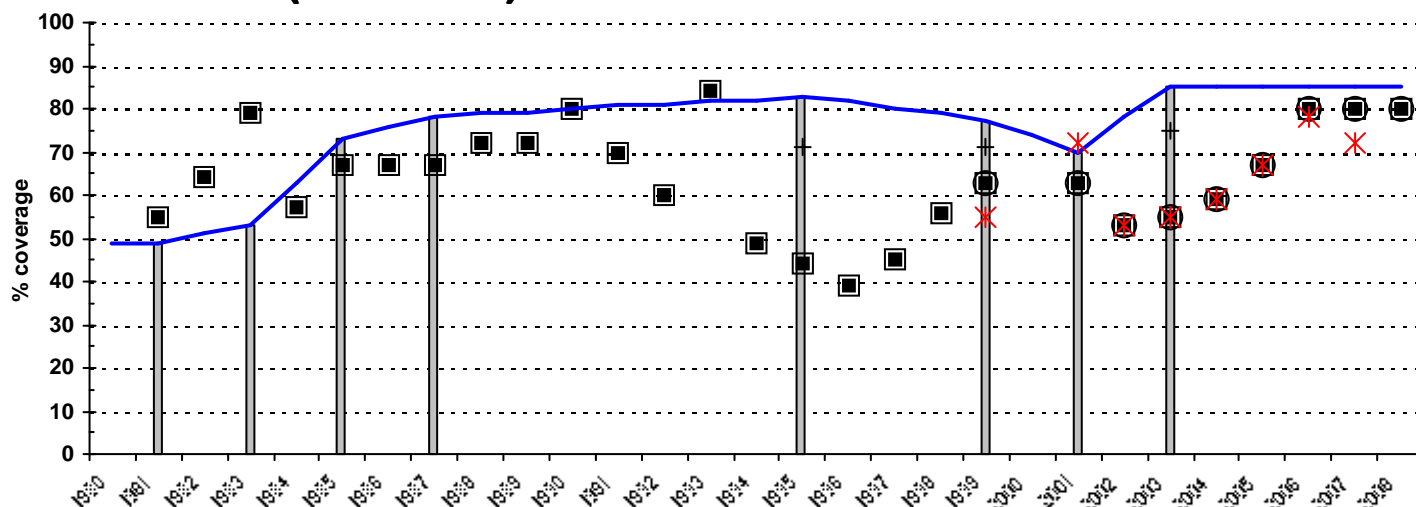
*Prior to 1998 national reports to WHO/UNICEF did not specify whether information was derived from administrative records, surveys or other sources.

**Coverage based on registration of doses administered by health care providers.

***In case more than one survey was implemented in a certain year the highest value is presented. Details of all data are presented in the second section of this report.

Lesotho

MCV (1980-2008)



Description of trend

Estimates are based on survey data. WHO/UNICEF recommend conducting a high quality survey to verify reported levels of coverage.

Data presented in chart

Year	WHO/ UNICEF estimate (%) —	Reported to:*		Government official estimate (%) ○	Reported doses administered (%)** ✕	Survey data (%)***	
		WHO (%) □	UNICEF (%) ■			Survey 12-23 months 	Survey <12 months +
1980	49						
1981	49	55	55			49	
1982	51	64	64				
1983	53	79	79			53	
1984	63	57	57				
1985	73	67	67			73	
1986	76	67	67				
1987	78	67	67			78	
1988	79	72	72				
1989	79	72	72				
1990	80	80	80				
1991	81	70	70				
1992	81	60	60				
1993	82	84	84				
1994	82	49	49				
1995	83	44	44			83	
1996	82	39	39				71
1997	80	45	45				
1998	79	56	56				
1999	77	63	63	63	55	77	71
2000	74						
2001	70	63	63	63	72	70	
2002	78	53	53	53	53		
2003	85	55	55	55	55	85	75
2004	85	59	59	59	59		
2005	85	67	67	67	67		
2006	85	80	80	80	78		
2007	85	80	80	80	72		
2008	85	80	80	80			

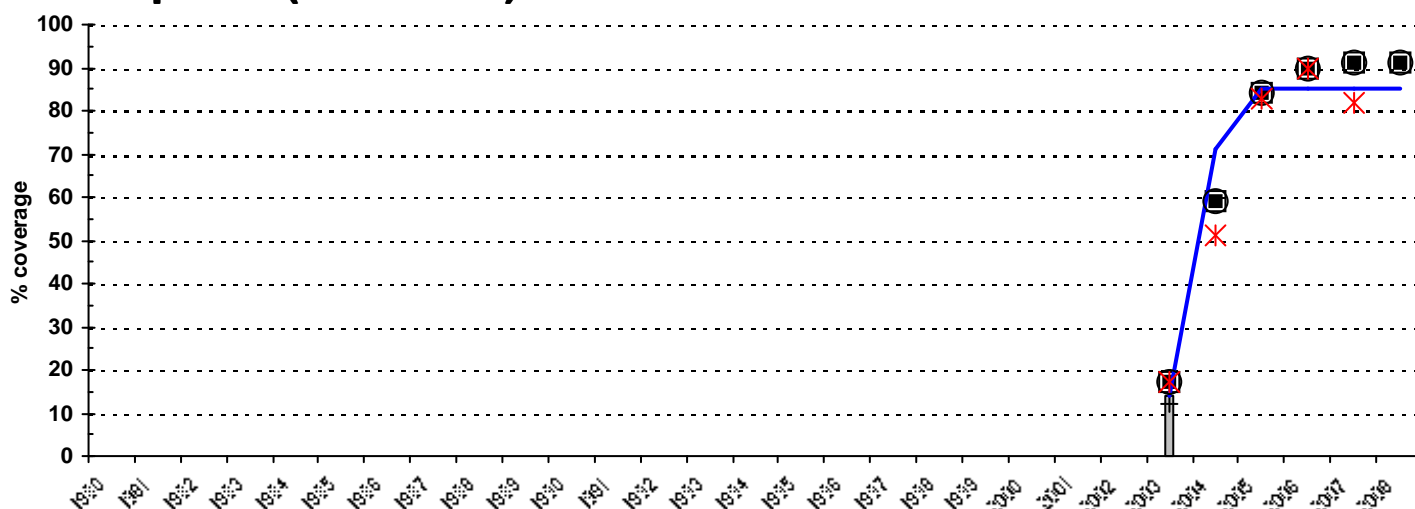
*Prior to 1998 national reports to WHO/UNICEF did not specify whether information was derived from administrative records, surveys or other sources.

**Coverage based on registration of doses administered by health care providers.

***In case more than one survey was implemented in a certain year the highest value is presented. Details of all data are presented in the second section of this report.

Lesotho

HepB3 (1980-2008)



Description of trend

Hepatitis B vaccine introduced October 2003 and 2005 coverage reaches DTP3 levels. Estimates are based on DTP3 coverage estimates following 2004. WHO/UNICEF recommend conducting a high quality survey to verify reported levels of coverage.

Data presented in chart

Year	WHO/ UNICEF estimate (%) —	Reported to:*		Government official estimate (%) ○	Reported doses administered (%)** ✕	Survey data (%)***	
		WHO (%) □	UNICEF (%) ■			Survey 12-23 months 	Survey <12 months +
1980							
1981							
1982							
1983							
1984							
1985							
1986							
1987							
1988							
1989							
1990							
1991							
1992							
1993							
1994							
1995							
1996							
1997							
1998							
1999							
2000							
2001							
2002							
2003	14	17	17	17	17	14	12
2004	71	59	59	59	51		
2005	85	84	84	84	83		
2006	85	90	90	90	90		
2007	85	91	91	91	82		
2008	85	91	91	91			

*Prior to 1998 national reports to WHO/UNICEF did not specify whether information was derived from administrative records, surveys or other sources.

**Coverage based on registration of doses administered by health care providers.

***In case more than one survey was implemented in a certain year the highest value is presented. Details of all data are presented in the second section of this report.

Lesotho

Details Survey Data

Year Source

Antigen	Confirmation method	% coverage	Compliance with schedule	Age group	Sample size	% cards seen	Survey year	Comments
2003 Lesotho Demographic and Health Survey 2004								
BCG	Card or History	96.4		12-23 m	660	77.7	2004	
BCG	C or H <12 month	95.3		12-23 m	660	77.7	2004	
DTP1	Card or History	94.6		12-23 m	660	77.7	2004	
DTP1	C or H <12 month	93.9		12-23 m	660	77.7	2004	
DTP3	Card or History	82.8		12-23 m	660	77.7	2004	
DTP3	C or H <12 month	80.4		12-23 m	660	77.7	2004	
Pol3	Card or History	79.7		12-23 m	660	77.7	2004	
Pol3	C or H <12 month	76.7		12-23 m	660	77.7	2004	
MCV	Card or History	84.9		12-23 m	660	77.7	2004	
MCV	C or H <12 month	74.7		12-23 m	660	77.7	2004	
HepB	Card or History	13.6		12-23 m	660	77.7	2004	
HepB	C or H <12 month	12.5		12-23 m	660	77.7	2004	
2001 Lesotho, National Nutrition and EPI Cluster Survey 2002								
BCG	Card or History	82.9		12-23 m	2289	90.8	2002	
DTP1	Card or History	82.9		12-23 m	2289	90.8	2002	
DTP3	Card or History	78.5		12-23 m	2289	90.8	2002	
Pol3	Card or History	78		12-23 m	2289	90.8	2002	
MCV	Card or History	69.8		12-23 m	2289	90.8	2002	
1999 Lesotho 2000 End Decade Multiple Indicator Cluster Survey (EMICS), Draft Preliminary Report, 2001								
BCG	Card or History	91.5		12-23 m	762	84.9	2000	
BCG	C or H <12 month	90.5		12-23 m	762	84.9	2000	
DTP1	Card or History	90.4		12-23 m	762	84.9	2000	
DTP1	C or H <12 month	88.5		12-23 m	762	84.9	2000	
DTP3	Card or History	85.4		12-23 m	762	84.9	2000	
DTP3	C or H <12 month	83.9		12-23 m	762	84.9	2000	
Pol3	Card or History	83.5		12-23 m	762	84.9	2000	
Pol3	C or H <12 month	82.4		12-23 m	762	84.9	2000	
MCV	Card or History	77.2		12-23 m	762	84.9	2000	
MCV	C or H <12 month	71.3		12-23 m	762	84.9	2000	
1995 Mid-Decade Goals: Progress Towards the World								
BCG	Card or History	96		12-23 m		75	1996	
BCG	C or H <12 month	88		12-23 m		75	1996	
DTP1	Card or History	95		12-23 m		75	1996	
DTP1	C or H <12 month			12-23 m		75	1996	
DTP3	Card or History	88		12-23 m		75	1996	
DTP3	C or H <12 month	79		12-23 m		75	1996	
Pol3	Card or History	88		12-23 m		75	1996	
Pol3	C or H <12 month	80		12-23 m		75	1996	
MCV	Card or History	83		12-23 m		75	1996	
MCV	C or H <12 month	71		12-23 m		75	1996	
PAB	Card or History	70		Women 15-49			1996	
1987 The Kingdom of Lesotho EPI Coverage Survey; October 1990								
BCG	Card or History	84		12-23 m	210	92	1988	no information on compliance
DTP1	Card or History	89		12-23 m	210	92	1988	no information on compliance
DTP3	Card or History	79		12-23 m	210	92	1988	no information on compliance
Pol3	Card or History	78		12-23 m	210	92	1988	no information on compliance

Lesotho

Details Survey Data

Year Source

Antigen	Confirmation method	% coverage	Compliance with schedule	Age group	Sample size	% cards seen	Survey year	Comments
MCV	Card or History	78		12-23 m	210	92	1988	no information on compliance

1985 *The Kingdom of Lesotho EPI Coverage Survey; October 1990*

BCG	Card or History	91		12-23 m	433	96	1986	no information on compliance
DTP1	Card or History	92		12-23 m	433	96	1986	no information on compliance
DTP3	Card or History	82		12-23 m	433	96	1986	no information on compliance
Pol3	Card or History	80		12-23 m	433	96	1986	no information on compliance
MCV	Card or History	73		12-23 m	433	96	1986	no information on compliance

1983 *The Kingdom of Lesotho EPI Coverage Survey; October 1990*

BCG	Card or History	88		12-23 m	214	86	1984	no information on compliance
DTP1	Card or History	83		12-23 m	214	86	1984	no information on compliance
DTP3	Card or History	66		12-23 m	214	86	1984	no information on compliance
Pol3	Card or History	64		12-23 m	214	86	1984	no information on compliance
MCV	Card or History	53		12-23 m	214	86	1984	no information on compliance

1981 *The Kingdom of Lesotho EPI Coverage Survey; October 1990*

BCG	Card or History	81		12-23 m	212	81	1982	no information on compliance
DTP1	Card or History	75		12-23 m	212	81	1982	no information on compliance
DTP3	Card or History	56		12-23 m	212	81	1982	no information on compliance
Pol3	Card or History	54		12-23 m	212	81	1982	no information on compliance
MCV	Card or History	49		12-23 m	212	81	1982	no information on compliance

Lesotho

WHO/UNICEF Estimates of Protection at Birth (PAB) against tetanus

In countries where tetanus is recommended for girls and women coverage is usually reported as "TT2+", i.e. the proportion of (pregnant) women who have received their second or superior TT dose in a given year. TT2 + coverage, however, can under-represent the actual proportion of births that are protected against tetanus as it does not include women who have previously received protective doses, women who received one dose without documentation of previous doses, and women who received doses in TT (or Td) supplemental immunization activities (SIA). In addition, girls who have received DTP in their childhood and are entering childbearing age, may be protected with TT booster doses.

WHO and UNICEF have developed a model that takes into account the above scenarios, and calculates the proportion of births in a given year that can be considered as having been protected against tetanus - "Protection at Birth".

In this model, annual cohorts of women are followed from infancy through their life. A proportion receive DTP in infancy (estimated based on the WHO-UNICEF estimates of DTP3 coverage). In addition some of these women also receive TT through routine services when they are pregnant and may also receive TT during SIAs. The model also adjusts reported data, taking into account coverage patterns in other years, and/or results available through surveys. The duration of protection is then calculated, based on WHO estimates of the duration of protection by doses ever received. The proportion of births that are protected against tetanus as a result of maternal immunization reflects the tetanus immunization received by the mother throughout her life rather than simply the TT immunizations received during the current pregnancy.

¹ This model is described in: Griffiths U., Wolfson L., Quddus A., Younus M., Hafiz R.. Incremental cost-effectiveness of supplementary immunization activities to prevent neo-natal tetanus in Pakistan. Bulletin of the World Health Organization 2004; 82:643-651.

Lesotho

Year	PAB coverage estimate (%)
1980	
1981	
1982	
1983	
1984	
1985	
1986	
1987	
1988	
1989	
1990	
1991	5
1992	8
1993	20
1994	40
1995	61
1996	84
1997	85
1998	82
1999	77
2000	73
2001	74
2002	76
2003	77
2004	78
2005	79
2006	80
2007	82
2008	83