



**WHO / UNICEF**

**Joint Monitoring Programme  
for Water Supply and Sanitation**

**Coverage Estimates**  
**Improved Drinking Water**

Updated in July 2008

---

**Zimbabwe**

---

# Zimbabwe

DHS	1988	
	Urban	Rural
<b>WATER</b>		
Piped into Residence	84.14	4.15
Private Tap	11.12	4.97
Communal Tap	0.89	9.24
Protected Well	0.98	15.43
Borehole	1.83	32.85
Protected Spring	0.16	1.14
Rainwater	0.04	0
Unprotected Well	0.48	16.56
Unprotected Spring	0	1.36
River/Surface Water	0.19	7.43
Mufuku	0.12	5.07
Tanker	0	0.47
Other	0	0.22
Dam	0	1.11
Missing	0.04	0
<b>TOTAL</b>	<b>99.99</b>	<b>100.0</b>
% Protected Spring		46%
<b>Access to improved drinking water sources</b>	<b>99%</b>	<b>68%</b>
% House connections	95%	9%

Source: Zimbabwe DHS, 1988

DHS	1994	
	Urban	Rural
<b>Water</b>		
Piped into Residence/Yard/Plot	92.6	4.3
Communal Tap	4.8	13.3
Protected Well	0.9	9.4
Borehole	0.7	42.4
Spring	0	0.6
Unprotected Well	0.8	16.7
River/Stream	0.1	11.1
Pond/Dam/Lake	0	1.9
Other	0.1	0.1
Missing/Unknown	0	0.2
<b>TOTAL</b>	<b>100</b>	<b>100.0</b>
% of protected spring based on DHS88		0.3
Improved Drinking Water Excluding Spring		69
Improved Drinking Water Including 100% Spring		70
<b>Access to improved drinking water sources (incl % spring)</b>	<b>99%</b>	<b>70%</b>
% House connections	93%	4%

Source: Zimbabwe DHS, 1994

## Survey

CSO	1997	
	Urban	Rural
Water		
Piped Water Inside	38.4	2.4
Piped Water Outside	56.3	4.6
Communal Tap	3.7	14.7
Borehole/Well Protected	1.3	51.7
Well, Unprotected	0.3	17.2
River/Stream/Dam	0	9.1
Other	0	0.1
<b>TOTAL</b>	<b>100</b>	<b>99.8</b>
<b>Access to improved drinking water sources</b>	<b>100%</b>	<b>73%</b>
% House connections	95%	7%

Source: Inter-Censal Demographic Survey Report. Central Statistical Office, Gov't of Zimbabwe, 1997

DHS	1999	
	Urban	Rural
Water		
Piped into Residence	49.5	2.1
Piped into Yard/Plot	41.4	4.0
Public tap	7.5	11.3
Protected well	0.7	12.8
Unprotected well	0.3	17.7
Borehole	0.5	41.6
Spring	0.0	0.5
River/ stream	0.0	8.0
Pond/ lake/ dam	0.0	1.7
Other	0.1	0.3
<b>TOTAL</b>	<b>100</b>	<b>100</b>
% of protected spring based on DHS88		0.2
Improved Drinking Water Excluding Spring		72
Improved Drinking Water Including 100% Spring		72
<b>Access to improved drinking water sources (incl % spring)</b>	<b>100%</b>	<b>72%</b>
% House connections	91%	6%

Source: Zimbabwe DHS, 1999

<b>WHS</b>			<b>2003</b>		
<b>WATER</b>	<b>Urban</b>	<b>Rural</b>			
Piped water through house connection or yard	80.2	7.2			
Public standpipe	5.8	8.4			
Protected tube well or bore hole	6.3	38.9			
Protected dug well or protected spring	4.4	19.2			
Rainwater (into tank or cistern )	0.0	0.0			
Unprotected dug well or spring	2.4	19.1			
Water taken directly from pond-water or stream	1.0	7.3			
Tanker-truck, vendor	0.0	0.0			
<b>TOTAL</b>	<b>100.0</b>	<b>100.0</b>			
Ratio of protected /all wells and springs	0.82	0.75			
<b>Access to improved drinking water sources</b>	<b>97%</b>	<b>74%</b>			
<b>% House connections</b>	<b>80%</b>	<b>7%</b>			

Source: World Health Survey, WHO, 2003.

<b>DHS</b>			<b>2005</b>		
<b>WATER</b>	<b>Urban</b>	<b>Rural</b>			
Piped water into dwelling/yard/plot	92.7	6.1			
Public tap/standpipe	4.5	5.7			
Tube well or bore hole	0.9	37.5			
Protected dug well	1.3	17.1			
Protected spring	0.0	0.7			
Rainwater	0.0	0.0			
Unprotected dug well	0.4	18.1			
Unproted spring	0.0	3.4			
Surface water	0.0	11.0			
Tanker-truck/cart with small tank	0.2	0.4			
<b>TOTAL</b>	<b>100.0</b>	<b>100.0</b>			
Ratio of protected /all wells	0.85	0.75			
Ratio of protected /all springs	0.00	0.84			
<b>Access to improved drinking water sources</b>	<b>99%</b>	<b>67%</b>			
<b>% House connections</b>	<b>93%</b>	<b>6%</b>			

Source: World Health Survey, WHO, 2003.

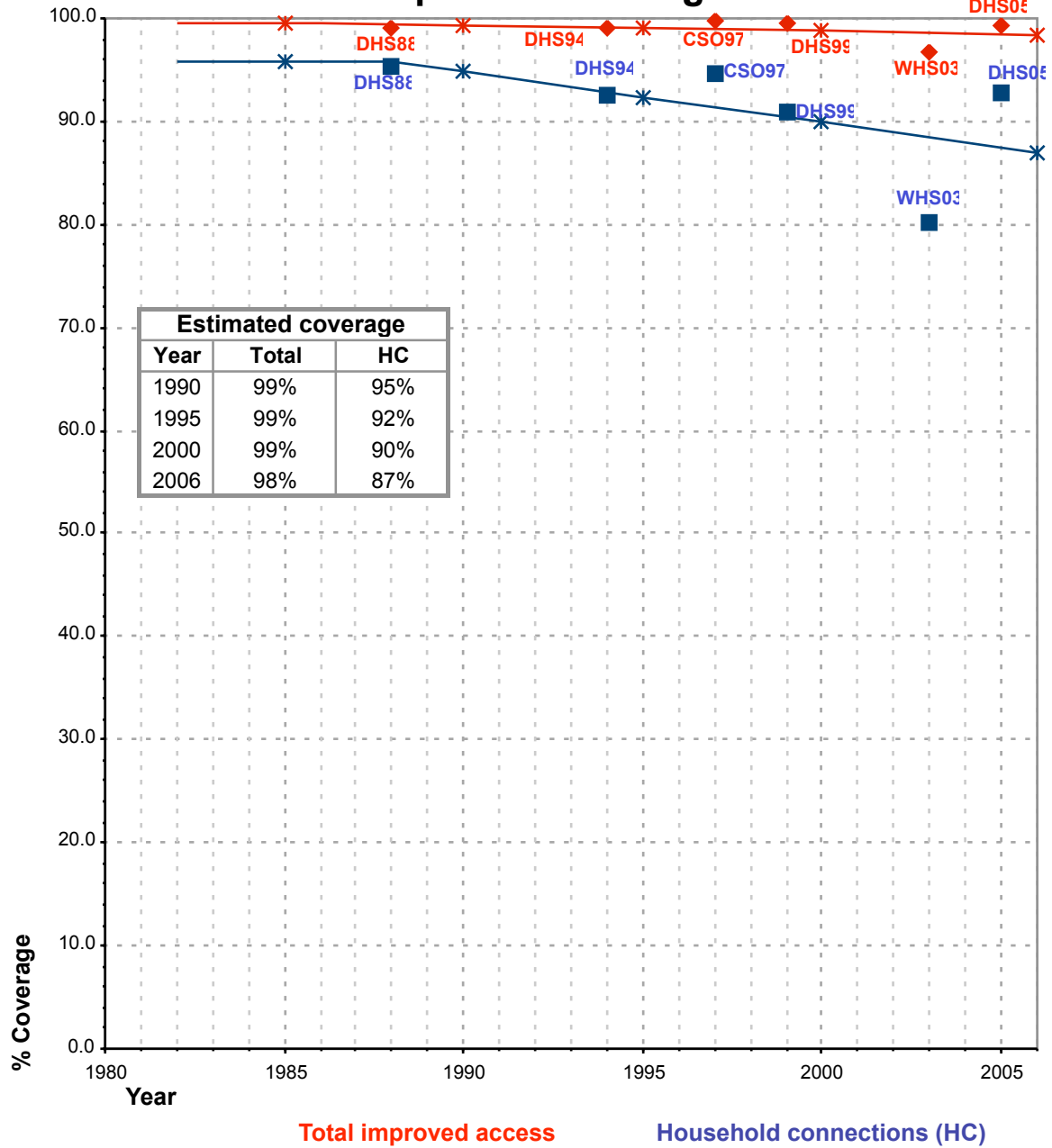
**Estimate**

<b>FORM-6/WHO</b>	<b>1999</b>	
<b>Water</b>	<b>Urban</b>	<b>Rural</b>
Population served with household connection	3'688'823.10	191'104.65
Population without household connection but with reasonable access to a public water point	122'450.56	5'964'057.80
<b>Total population served</b>	<b>3'811'273.60</b>	<b>6'155'162.45</b>
Total population unserved	15'306.40	1'807'531.60
Total population	3'826'580.00	7'962'694.05
<b>Access to improved drinking water sources</b>	<b>100%</b>	<b>77%</b>
% House connections	96%	2%

Source: Global Water Supply and Sanitation Assessment 2000. Water Supply and Sanitation Sector Questionnaire - 1999 (Form 6 - sent to WHO)

Zimbabwe			DRINKING WATER							
			URBAN				RURAL			
			HC		Total		HC		Total	
Source	Code	Year	Used for estimates	Not used for estimates	Used for estimates	Not used for estimates	Used for estimates	Not used for estimates	Used for estimates	Not used for estimates
The International Drinking Water Supply and Sanitation Decade. Review of Mid-Decade Progress (as at December 1985). WHO 1987.	WHO85	1985								32.0
Zimbabwe Demographic and Health Survey 1988	DHS88	1988	95.3		99.2		9.1		67.8	
The International Drinking Water Supply and Sanitation Decade. Review of National Progress (as at December 1988). WHO 1990.	WHO88	1988		57.0		95.0				80.0
The International Drinking Water Supply and Sanitation Decade. End of Decade Review (as at December 1990). WHO1992.	WHO90	1990		57.0		95.0				80.0
Zimbabwe Demographic and Health Survey 1994	DHS94	1994	92.6		99.0		4.3		69.7	
1997 Inter-Censal Demographic Survey Report. Central Statistics Office, Harare 1997.	CSO97	1997	94.7		99.7		7.0		73.4	
Global Water Supply and Sanitation Assessment 2000. Water Supply and Sanitation Sector Questionnaire - 1999. (Form 6 sent to WHO)	JMP99	1999		96.4		100.0		2.4		77.0
Zimbabwe Demographic and Health Survey 1999	DHS99	1999	90.9		99.6		6.1		72.0	
World Health Survey, WHO, 2003.	WHS03	2003	80.2		96.6		7.2		73.6	
Zimbabwe Demographic and Health Survey	DHS05	2005	92.7		99.4		6.1		67.1	

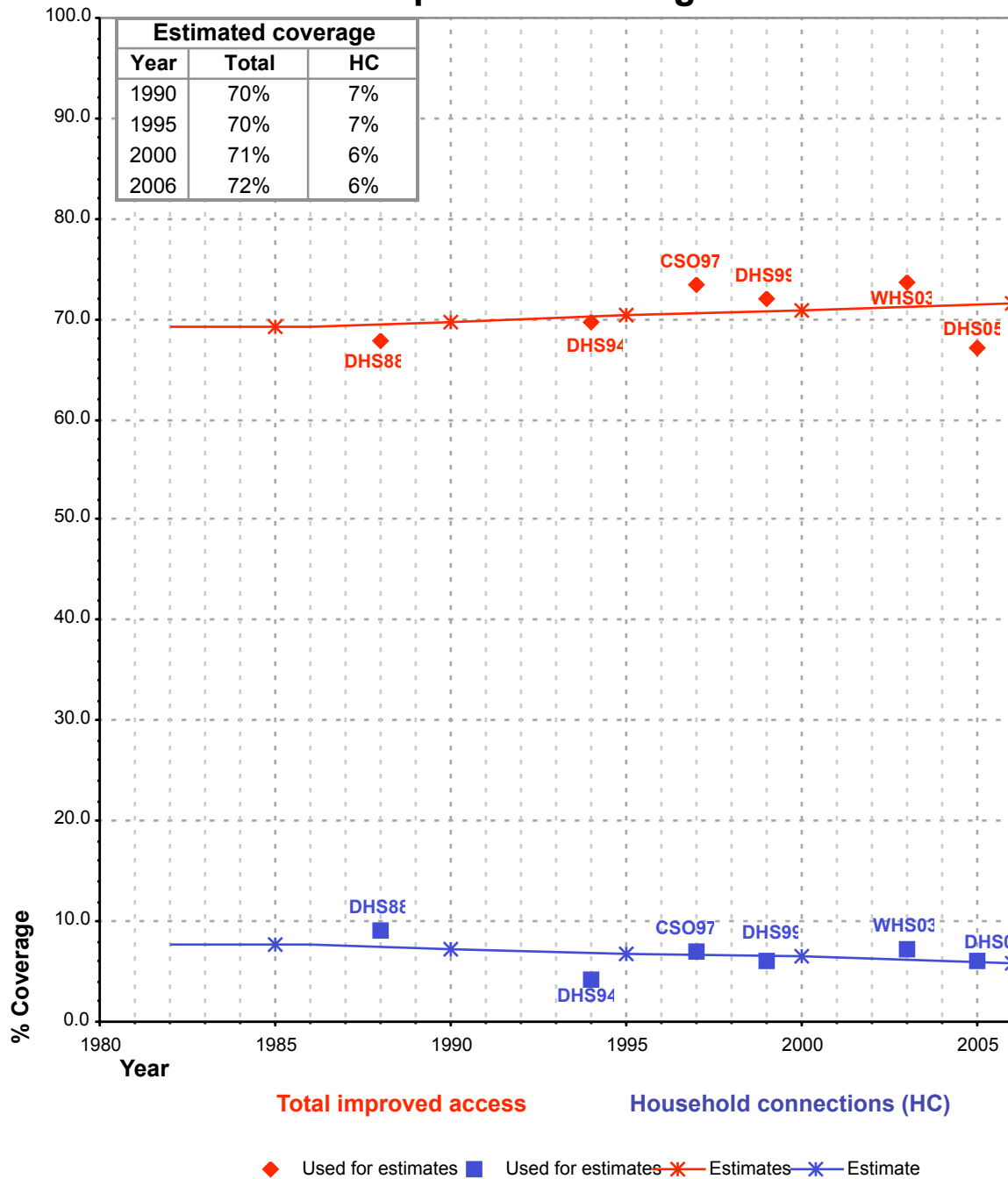
# Zimbabwe - urban - Access to improved drinking water sources



◆ Used for estimates   
 ■ Used for estimates   
 ✱ Estimates   
 ✱ Estimate

Total access :  
 Household connections :

# Zimbabwe - rural - Access to improved drinking water sources



Total access :  
Household connections :