



**WHO / UNICEF**

**Joint Monitoring Programme  
for Water Supply and Sanitation**

Coverage Estimates  
**Improved Sanitation**

Updated in July 2008

---

**Zimbabwe**

---

# Zimbabwe

DHS		1988	
SANITATION	Urban	Rural	
Flush Toilet*	95.2	5.0	
Blair Toilet (VIP)	2.4	25.9	
Pit Latrine**	1.4	21.0	
No Facilities	1.0	48.0	
Other	0.0	0.1	
Missing	0.1	0.0	
<b>TOTAL</b>	<b>100</b>	<b>100</b>	
considered to be improved, based on WHS03	1.2	19.5	
<b>Access to improved sanitation</b>	<b>99%</b>	<b>50%</b>	
<b>Estimation of private sewerage connections</b>	<b>#REF!</b>	<b>#REF!</b>	

Source: Zimbabwe DHS 1988

DHS		1994	
SANITATION	Urban	Rural	
Private Flush Toilet	65.8	1.9	
Shared Flush Toilet	28.8	0.6	
Traditional Pit Latrine*	3.3	16.9	
Blair Toilet	1.4	29.4	
No Facilities	0.5	50.8	
Other	0	0.1	
Missing/Unknown	0.1	0.4	
<b>TOTAL</b>	<b>100</b>	<b>100</b>	
considered to be improved, based on WHS03	3.0	15.7	
<b>Access to improved sanitation</b>	<b>99%</b>	<b>48%</b>	
<b>Estimation of private sewerage connections</b>	<b>#REF!</b>	<b>#REF!</b>	

Source: Zimbabwe DHS 1994

## Survey

CSO		1997	
SANITATION	Urban	Rural	
Flush*	96.2	3.7	
Blair Toilet Pit**	1.8	39.2	
	1.7	12.8	
None	0.4	44.4	
<b>TOTAL</b>	<b>100.1</b>	<b>100.1</b>	
considered to be improved, based on WHS03	1.5	11.9	
<b>Access to improved sanitation</b>	<b>100%</b>	<b>55%</b>	
<b>Estimation of private sewerage connections</b>	<b>#REF!</b>	<b>#REF!</b>	

Source: Inter-Censal Demographic Survey Report.

DHS		1999	
SANITATION	Urban	Rural	
Flush Toilet*	93.7	2.2	
Traditional Pit Toilet**	2.7	22	
VIP latrine/ Blair toilet	2.9	35.9	
No facility/ bush/ field	0.3	39.5	
Other	0.1	0.2	
Missing	0.3	0.2	
<b>TOTAL</b>	<b>100.0</b>	<b>100.0</b>	
Traditional pit toilets considered to be improved, based on WHS03	2.5	20.4	
<b>Access to improved sanitation</b>	<b>99%</b>	<b>59%</b>	
<b>Estimation of private sewerage connections</b>	<b>#REF!</b>	<b>#REF!</b>	

Source: Zimbabwe DHS 1999

<b>WHS</b>		<b>2003</b>	
Proportion shared improved facilities/all improved facilities		32.8%	17.6%
<b>SANITATION</b>		<b>Urban</b>	<b>Rural</b>
Private domestic connection to sewage system		53.0	3.7
Shared domestic connection to sewage system		25.0	1.1
Private flush to septic tank		1.1	0.4
Shared flush to septic tank		1.1	0.1
Private pour flush latrine		0.8	0.1
Shared pour flush latrine		1.1	0.0
Private covered dry latrine (with privacy)		6.8	43.5
Shared covered dry latrine (with privacy)		2.9	9.0
Uncovered dry latrine (without privacy)		1.1	4.1
Bucket latrine (where fresh excreta are manually removed)		0.1	0.1
No facilities (open defecation)		6.8	35.9
Other		0.1	2.1
TOTAL		100.0	100.0
Ratio of improved latrines over all latrines		0.91	0.93
<b>% Private improved sanitation</b>		<b>92%</b>	<b>58%</b>
<b>% Private sewerage connections</b>		<b>53%</b>	<b>4%</b>

Source: World Health Survey, WHO, 2003.

<b>DHS</b>		<b>2005</b>	
Proportion shared improved facilities/all improved facilities		34.3%	32.6%
<b>SANITATION</b>		<b>Urban</b>	<b>Rural</b>
Flush/pour flush to piped sewer system		52.1	1.2
Flush/pour flush to septic tank		4	0.8
Flush/pour flush to pit latrine		0.7	0.1
VIP latrine/Blair toilet		1.3	21.6
Pit latrine with slab		0.4	6.5
Composting toilet		0	0.1
Shared toilet		38.8	17
Flush/pour flush not to sewer/septic tank/pit latrine		1.2	0
Pit latrine without slab/open pit		0.3	7.3
Bucket		0.3	0.1
No facility/bush/field		0.2	44.9
Other		0.2	0.1
Missing		0.4	0.2
TOTAL		100	100
shared san (improved)		33.4	15.4
<b>Access to improved sanitation</b>		<b>97%</b>	<b>47%</b>
<b>% House connections</b>		<b>52%</b>	<b>1%</b>

Source: Zimbabwe Demographic and Health Survey 2005-2006.

**Estimate**

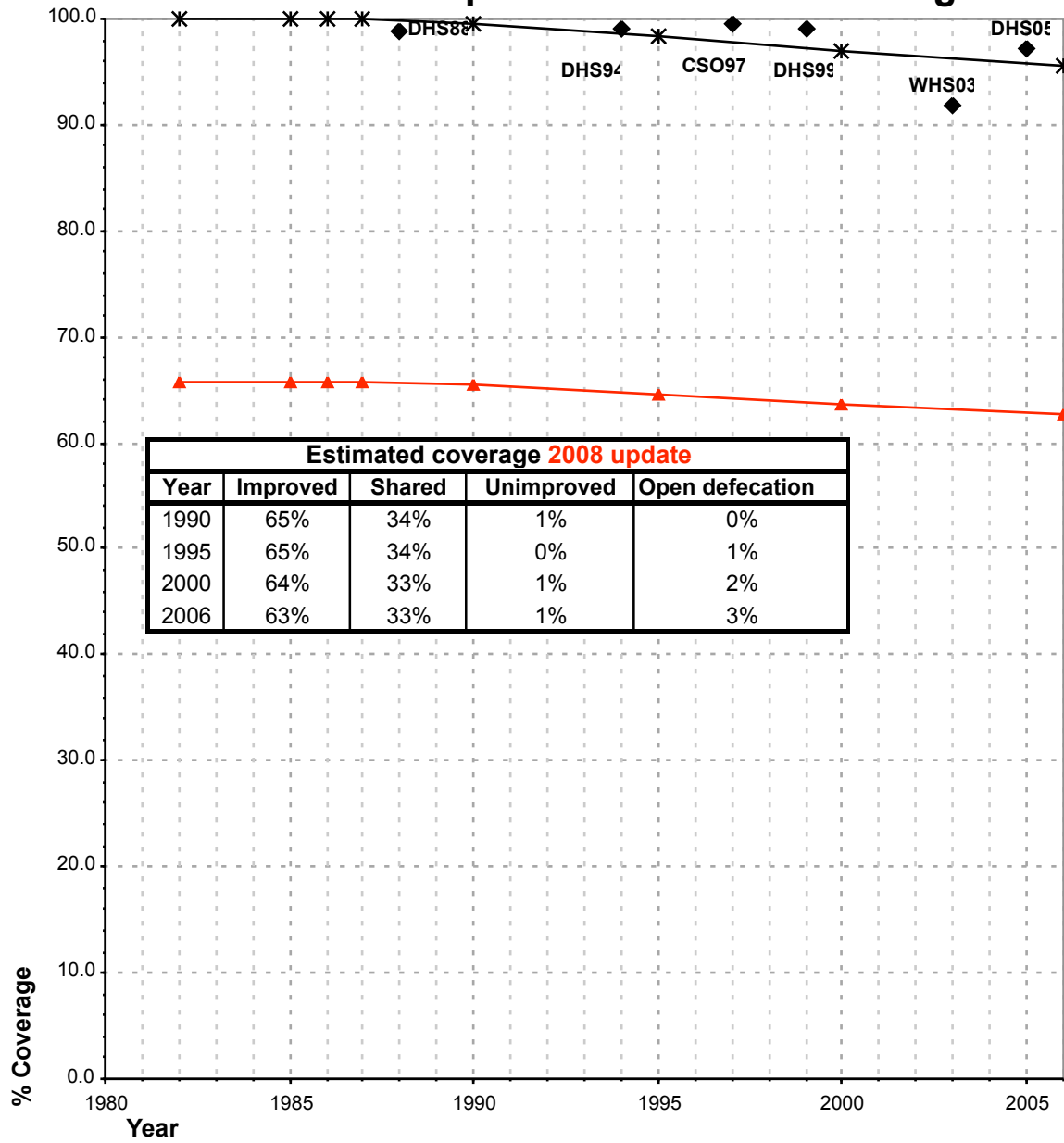
<b>FORM6/WHO</b>		<b>1999</b>
<b>SANITATION</b>	<b>Urban</b>	<b>Rural</b>
Population served with household connections to conventional sewers	3'524'280.10	199'067.35
Population without household connections but served with adequate, private or shared on-site system	256'380.86	301'786.10
<b>Total population served</b>	<b>3'780'660.90</b>	<b>3'216'928.30</b>
Total population unserved	45'919.10	4'745'765.70
Total population	3'826'580.00	7'962'694.00
<b>sanitation</b>	<b>99%</b>	<b>40%</b>
% House connections	92%	3%

Source: Global Water Supply and Sanitation Assessment 2000. Water Supply and Sanitation Sector Questionnaire - 1999 (Form 6 -sent to WHO)

Zimbabwe			SANITATION											
			URBAN				RURAL				OPEN DEFECCATION			
			HC		Total		HC		Total		Urban		Rural	
			Used for estimates	Not used for estimates	Used for estimates	Not used for estimates	Used for estimates	Not used for estimates	Used for estimates	Not used for estimates	Used for estimates	Not used for estimates	Used for estimates	Not used for estimates
Source	Code	Year												
The International Drinking Water Supply and Sanitation Decade. Review of Mid-Decade Progress (as at December 1985). WHO 1987.	WHO85	1985								15.0				
Zimbabwe Demographic and Health Survey 1988	DHS88	1988	#REF!		98.8		#REF!		50.4		1.0		48.0	
The International Drinking Water Supply and Sanitation Decade. Review of National Progress (as at December 1988). WHO 1990.	WHO88	1988		75.0		95.0				22.0				
The International Drinking Water Supply and Sanitation Decade. End of Decade Review (as at December 1990). WHO1992.	WHO90	1990		75.0		95.0				22.0				
Zimbabwe Demographic and Health Survey 1994	DHS94	1994	#REF!		99.0		#REF!		47.6		0.5		50.8	
1997 Inter-Censal Demographic Survey Report. Central Statistics Office, Harare 1997.	CSO97	1997	#REF!		99.5		#REF!		54.8		0.4		44.4	
Global Water Supply and Sanitation Assessment 2000. Water Supply and Sanitation Sector Questionnaire - 1999. (Form 6 sent to WHO)	JMP99	1999		92.0		99.0				40.0				
Zimbabwe Demographic and Health Survey 1999	DHS99	1999	#REF!		99.1		#REF!		58.5		0.3		39.5	
World Health Survey, WHO, 2003.	WHS03	2003	53.0		91.9		3.7		57.9		6.8		35.9	
Zimbabwe Demographic and Health Survey	DHS05	2005			97.3				47.3		0.2		44.9	

There is no definition of "pit". It might include unprotected latrines

# Zimbabwe - urban - Access to improved sanitation coverage



Improved plus Shared

Improved

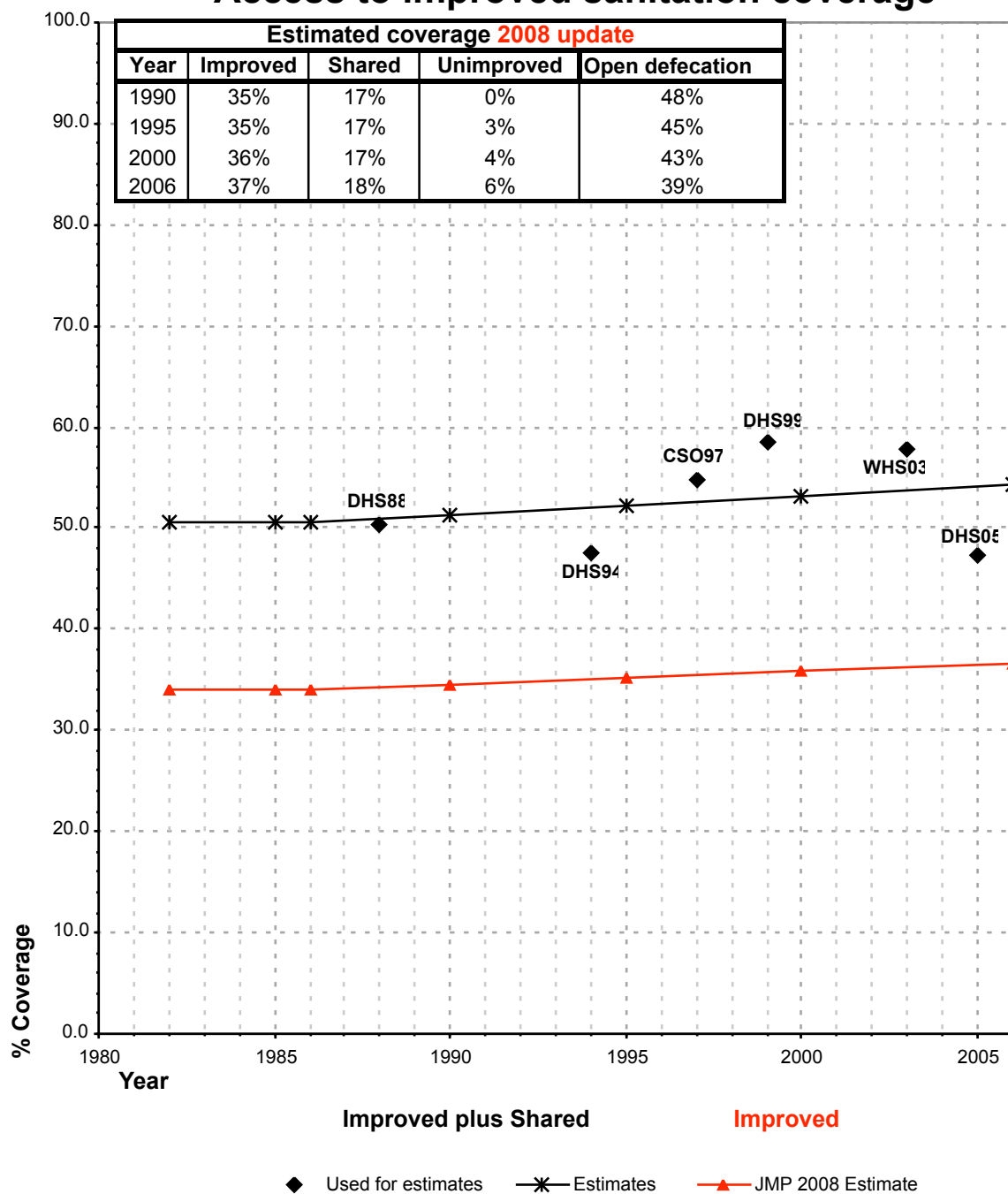
◆ Used for estimates

✱ Estimates

▲ JMP 2008 Estimate

Total access : used WHS03 for shared san as more detailed info available

# Zimbabwe - rural - Access to improved sanitation coverage



Total access :used WHS03 for shared san as more detailed info available