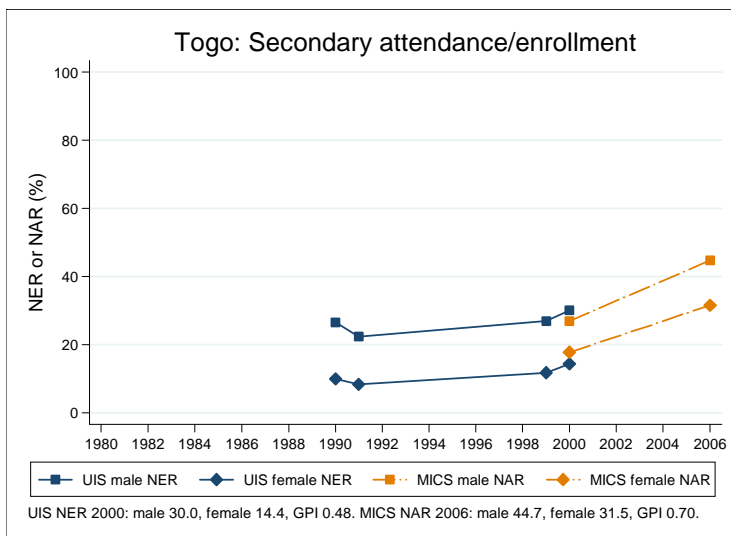
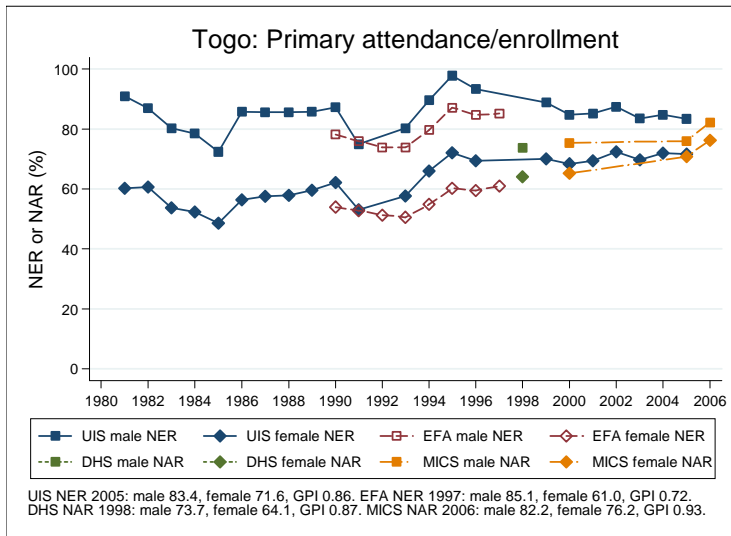
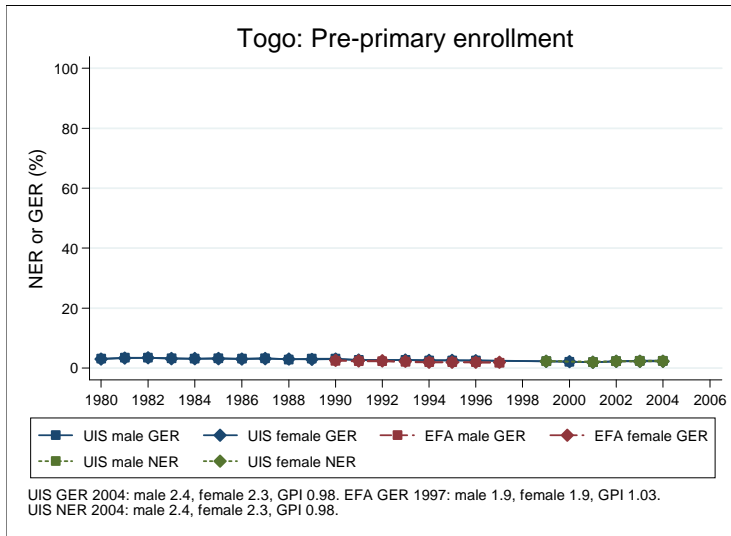
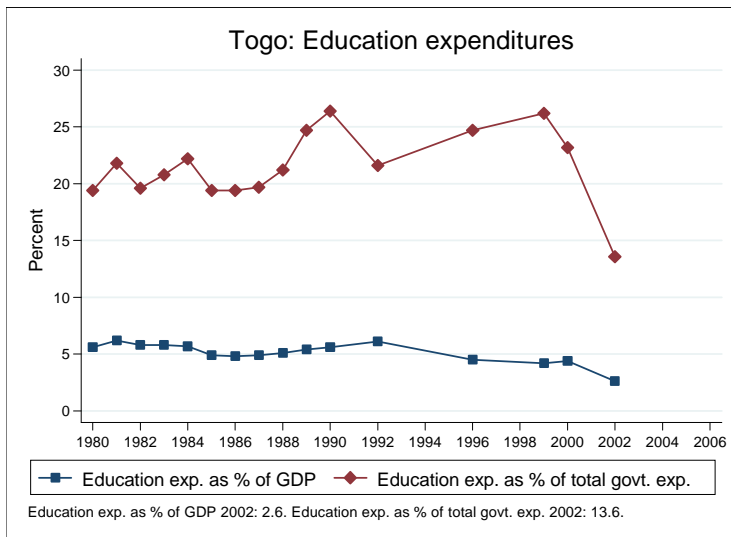
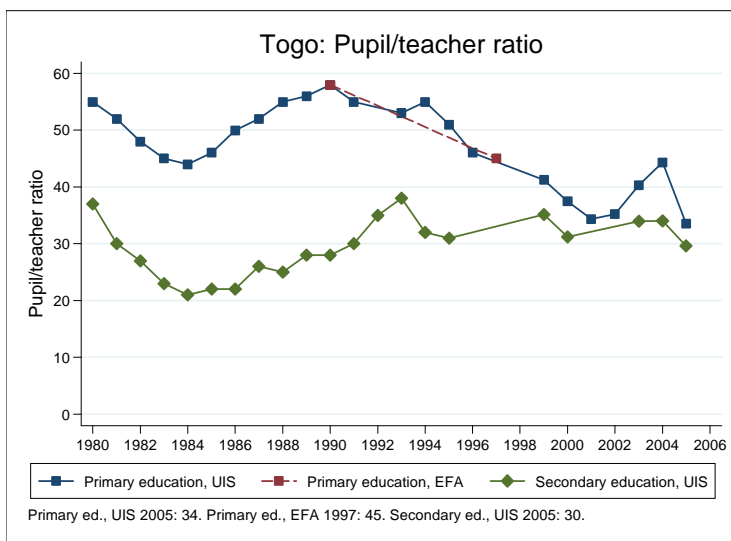
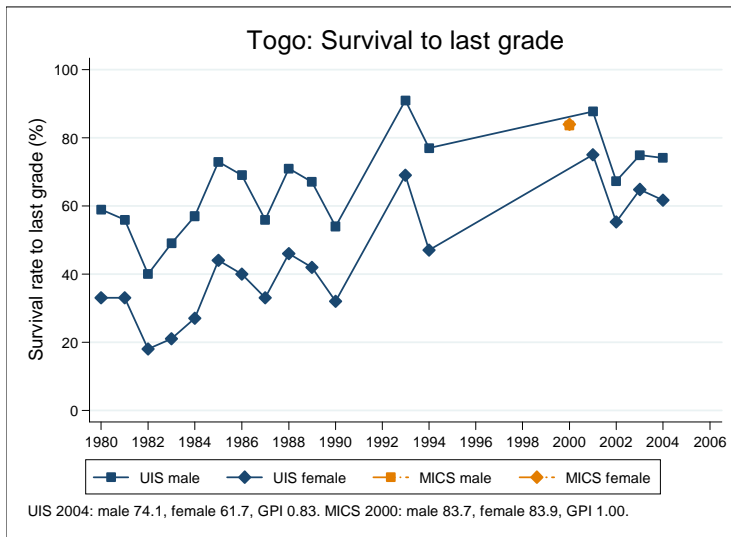


Education statistics: Togo

UNICEF, Division of Policy and Practice, Statistics and Monitoring Section, www.childinfo.org, May 2008





Administrative data: UNESCO Institute for Statistics

Togo

Population (1,000)	Total	Male	Female
Preschool age, 2006	579	290	290
Primary school age, 2006	1027	513	514
Secondary school age, 2006	1014	506	508
Total population, all ages, 2007	6585	3258	3327
Official school age (years)	Entrance age	Graduation age	Duration
Preschool, 2005	3	5	3
Primary school, 2005	6	11	6
Secondary school, 2005	12	18	7
Compulsory education, 2005	6	15	10
Net enrolment ratio (%)	Total	Male	Female
Preschool NER, 2004	2.4	2.4	2.3
Primary school NER, 2005	77.5	83.4	71.6
Secondary school NER, 2000	22.2	30.0	14.4
Gross enrolment ratio (%)	Total	Male	Female
Preschool GER, 2004	2.4	2.4	2.3
Primary school GER, 2005	99.4	107.6	91.2
Secondary school GER, 2005	40.4	53.7	27.1
Entrance and transition (%)	Total	Male	Female
Primary net intake rate, 2005	37.8	39.4	36.1
Primary gross intake rate, 2005	90.1	93.4	86.8
Primary entrants with ECCE, 2001	1.9	1.7	2.1
Transition rate primary-secondary, 2004	66.6	69.5	62.5
Repetition and completion	Total	Male	Female
Primary repetition rate (%), 2005	22.9	22.6	23.3
Secondary repetition rate (%), 2005	20.6	20.8	20.1
Survival rate to grade 5 (%), 2004	74.6	78.6	70.1
Survival rate to last primary grade (%), 2004	68.3	74.1	61.7
Primary completion rate (%), 2005	65.0	75.9	54.2
School life expectancy (years), 2005	8.9	10.4	7.4
Teaching staff	Pupil/teacher ratio	% trained teachers	% female teachers
Preschool, 2004	18.5	67.5	91.2
Primary school, 2005	33.6	36.8	11.6
Secondary school, 2005	29.6	46.6	6.7
Public expenditure per student as % of GDP per capita			
Primary school, 2002	6.7		
Secondary school, 2000	26.5		
Total public expenditure on education			
As % of GDP, 2002	2.6		
As % of total government expenditure, 2002	13.6		

Data sources:

Population: United Nations Population Division, *World Population Prospects: The 2006 Revision*, March 2007.

Education: UNESCO Institute for Statistics, Data Centre, <http://stats.uis.unesco.org/unesco/ReportFolders/ReportFolders.aspx>, January 2008.

Survey data: Togo 2000 MICS

Togo

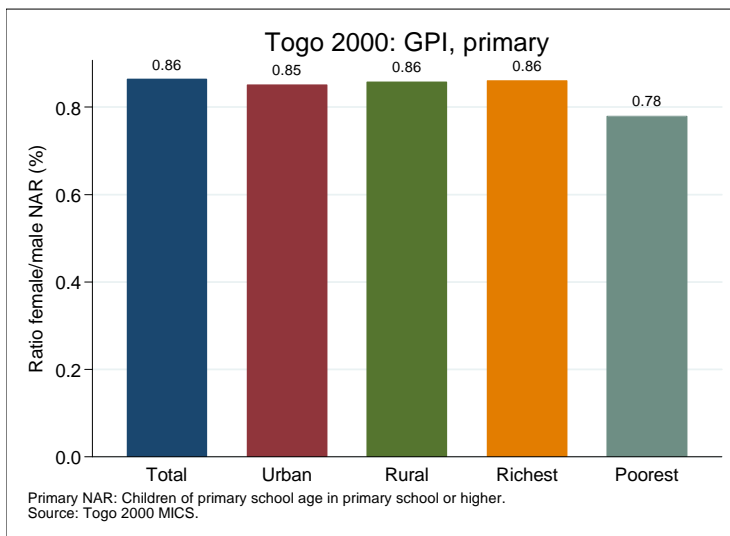
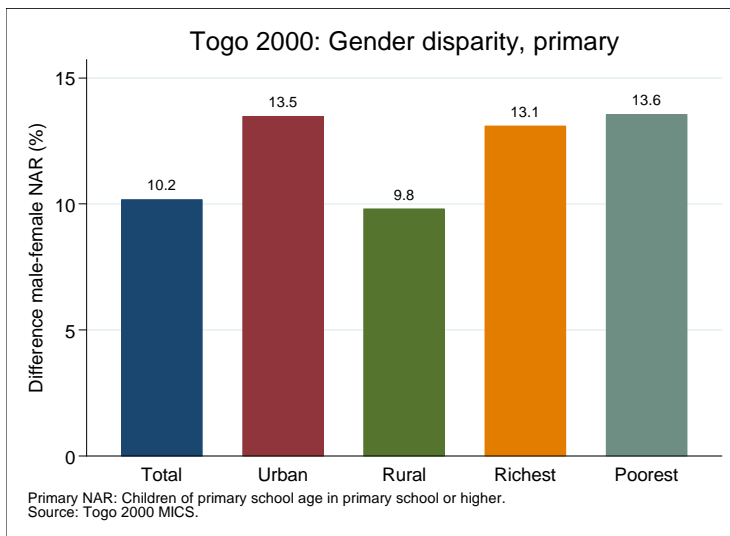
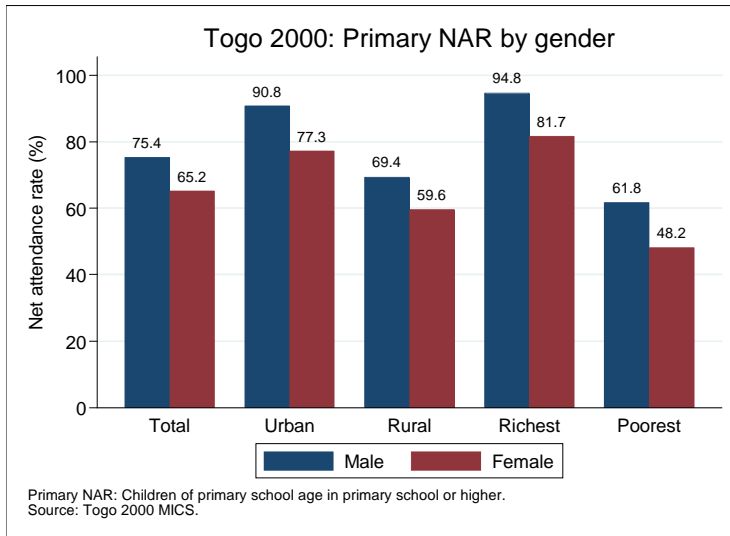
Net attendance rate (%)	Total	Male	Female	Urban	Rural	Richest	Poorest
Primary school NAR	70.4	75.4	65.2	83.8	64.8	87.5	55.2
Secondary school NAR	22.6	26.9	17.8	37.4	12.8	45.1	7.6
Gross attendance rate (%)	Total	Male	Female	Urban	Rural	Richest	Poorest
Primary school GAR	107.6	114.8	100.1	127.7	99.2	133.6	83.0
Secondary school GAR	24.1	28.9	18.7	39.9	13.7	47.9	7.8
Primary age in school (%)	Total	Male	Female	Urban	Rural	Richest	Poorest
Primary school	69.1	73.6	64.3	80.7	64.2	82.9	54.9
Secondary school	1.3	1.8	0.8	3.1	0.6	4.6	0.3
Preschool	0.1	0.1	0.2	0.0	0.2	0.0	0.2
Non-formal education	0.0	0.0	0.0	0.0	0.0	0.0	0.1
Secondary age in school (%)	Total	Male	Female	Urban	Rural	Richest	Poorest
Secondary school	21.9	26.0	17.3	35.9	12.6	43.0	7.2
Higher education	0.7	0.9	0.5	1.4	0.2	2.1	0.4
Primary school	48.1	51.6	44.2	37.1	55.3	31.6	50.2
Preschool	0.0	0.0	0.0	0.0	0.0	0.0	0.1
Non-formal education	0.0	0.1	0.0	0.0	0.1	0.0	0.0
Entrance and transition (%)	Total	Male	Female	Urban	Rural	Richest	Poorest
Primary net intake rate	18.7	22.8	14.4	16.6	19.5	9.4	18.6
Primary gross intake rate	84.2	88.0	80.3	93.9	80.5	97.2	73.4
Primary entrants with ECCE	12.5	11.8	13.2	24.3	7.2	39.4	2.2
Transition rate prim.-sec.	84.2	86.2	80.9	87.9	78.6	88.9	69.7
Repetition and completion (%)	Total	Male	Female	Urban	Rural	Richest	Poorest
Primary repetition rate	18.7	18.3	19.3	17.0	19.8	12.7	21.0
Primary dropout rate	2.6	2.7	2.5	2.7	2.6	2.3	2.7
Secondary repetition rate	17.2	16.2	18.9	17.5	16.5	13.6	17.2
Secondary dropout rate	2.4	2.2	2.7	1.4	4.5	1.9	6.3
Survival rate to grade 5	87.5	87.0	88.0	88.5	86.9	89.6	84.6
Survival rate to last prim. grade	83.9	83.7	83.9	84.2	84.0	85.7	84.6

Primary school NAR: children of primary school age in primary school or higher.

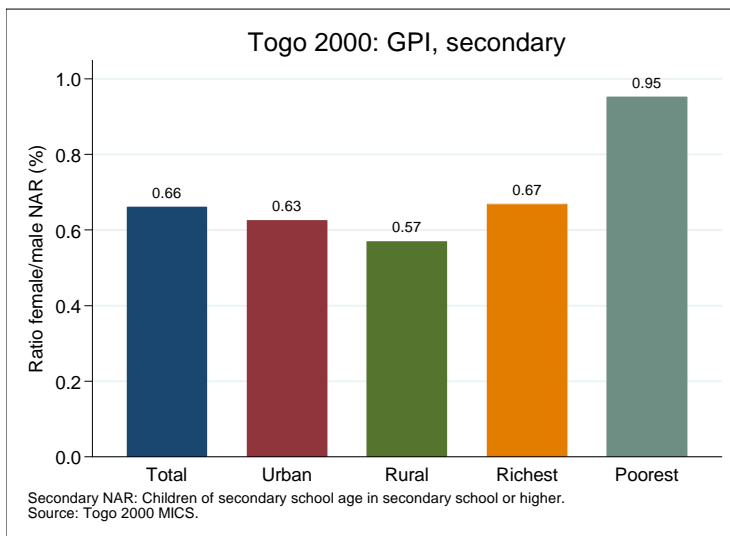
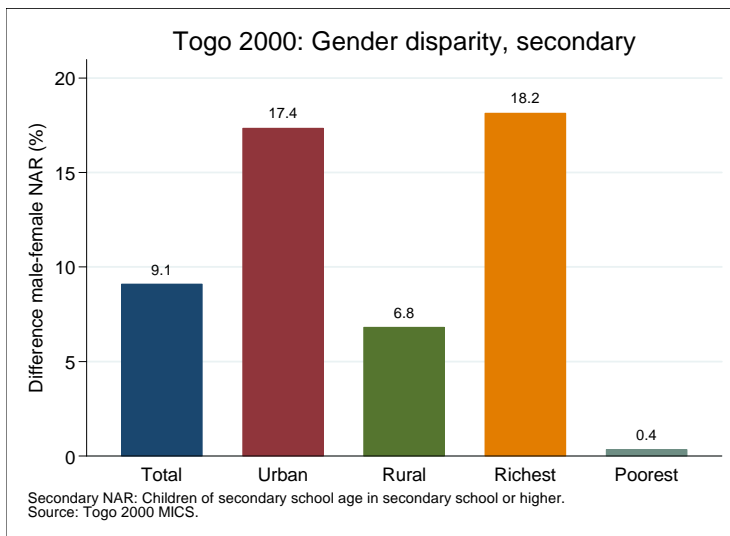
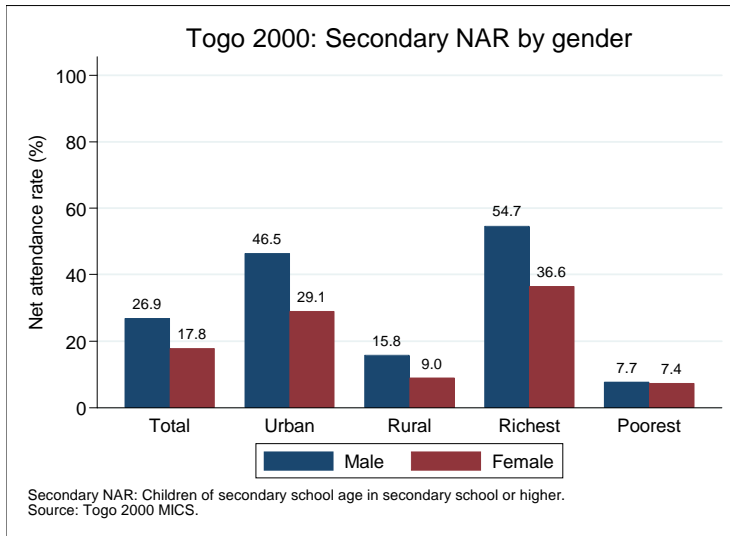
Secondary school NAR: children of secondary school age in secondary school or higher.

Data source: Togo 2000 MICS.

Gender disparity in primary school (survey data)



Gender disparity in secondary school (survey data)



Projections to 2015

