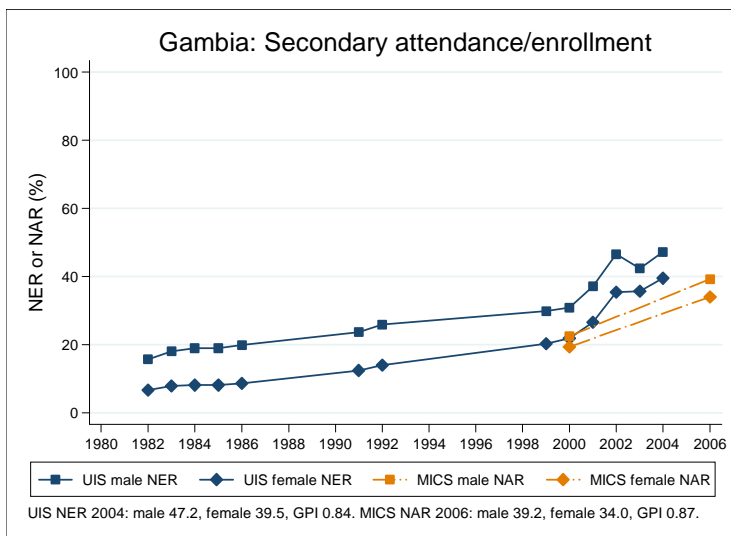
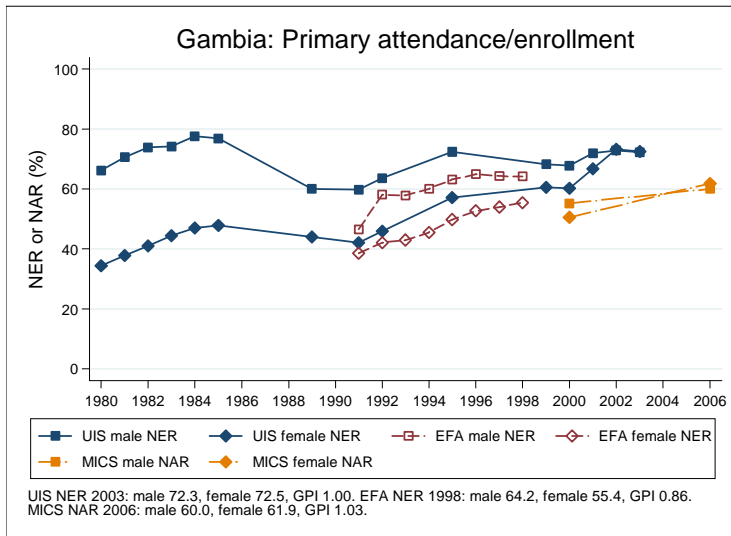
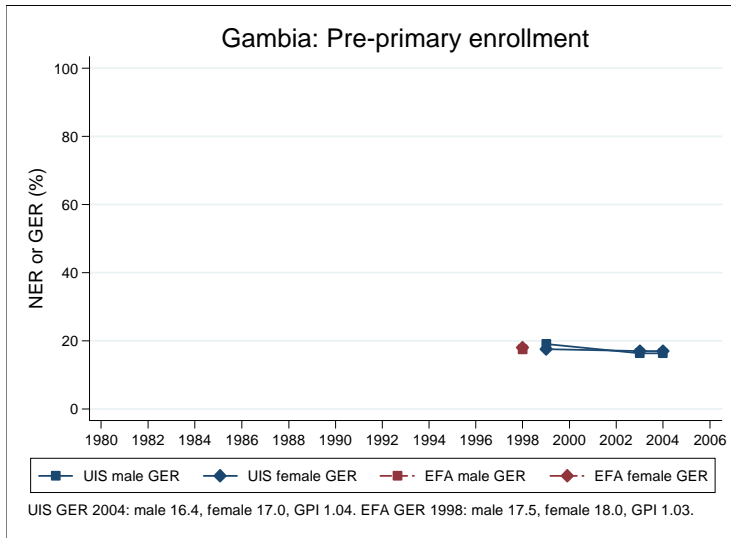
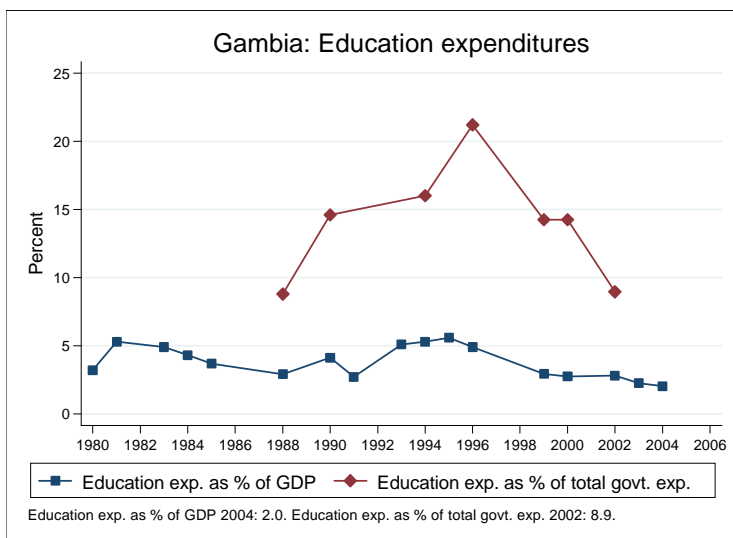
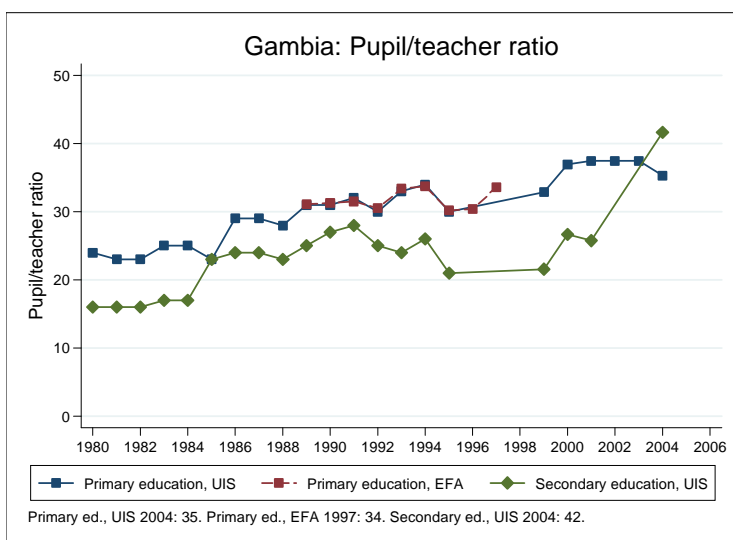
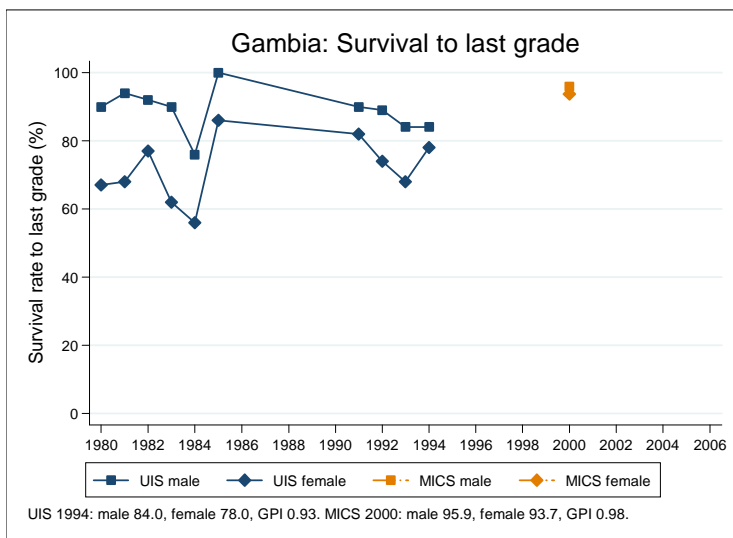


## Education statistics: Gambia

UNICEF, Division of Policy and Practice, Statistics and Monitoring Section, www.childinfo.org, May 2008





## Administrative data: UNESCO Institute for Statistics

### Gambia

<b>Population (1,000)</b>	<b>Total</b>	<b>Male</b>	<b>Female</b>
Preschool age, 2006	190	96	94
Primary school age, 2006	246	124	122
Secondary school age, 2006	202	102	100
Total population, all ages, 2007	1709	855	853
<b>Official school age (years)</b>	<b>Entrance age</b>	<b>Graduation age</b>	<b>Duration</b>
Preschool, 2005	3	6	4
Primary school, 2005	7	12	6
Secondary school, 2005	13	18	6
Compulsory education, 2005	7	11	5
<b>Net enrolment ratio (%)</b>	<b>Total</b>	<b>Male</b>	<b>Female</b>
Preschool NER			
Primary school NER, 2003	72.4	72.3	72.5
Secondary school NER, 2004	43.3	47.2	39.5
<b>Gross enrolment ratio (%)</b>	<b>Total</b>	<b>Male</b>	<b>Female</b>
Preschool GER, 2004	16.7	16.4	17.0
Primary school GER, 2004	75.7	73.3	78.2
Secondary school GER, 2004	45.0	49.0	40.9
<b>Entrance and transition (%)</b>	<b>Total</b>	<b>Male</b>	<b>Female</b>
Primary net intake rate, 2000	44.0	44.1	43.9
Primary gross intake rate, 2003	82.1	78.8	85.4
Primary entrants with ECCE			
Transition rate primary-secondary, 1999	82.3	83.3	81.1
<b>Repetition and completion</b>	<b>Total</b>	<b>Male</b>	<b>Female</b>
Primary repetition rate (%), 1999	12.2	12.1	12.3
Secondary repetition rate (%), 2000	2.4	2.4	2.5
Survival rate to grade 5 (%)			
Survival rate to last primary grade (%)			
Primary completion rate (%), 1999	52.9	60.2	45.5
School life expectancy (years), 2004	7.2	7.3	7.2
<b>Teaching staff</b>	<b>Pupil/teacher ratio</b>	<b>% trained teachers</b>	<b>% female teachers</b>
Preschool, 2004	37.8		56.4
Primary school, 2004	35.3	57.8	34.5
Secondary school, 2004	41.7	89.0	14.3
<b>Public expenditure per student as % of GDP per capita</b>			
Primary school, 2004	7.4		
Secondary school, 2004	9.1		
<b>Total public expenditure on education</b>			
As % of GDP, 2004	2.0		
As % of total government expenditure, 2002	8.9		

*Data sources:*

*Population:* United Nations Population Division, *World Population Prospects: The 2006 Revision*, March 2007.

*Education:* UNESCO Institute for Statistics, Data Centre, <http://stats.uis.unesco.org/unesco/ReportFolders/ReportFolders.aspx>, January 2008.

Survey data: Gambia 2000 MICS

**Gambia**

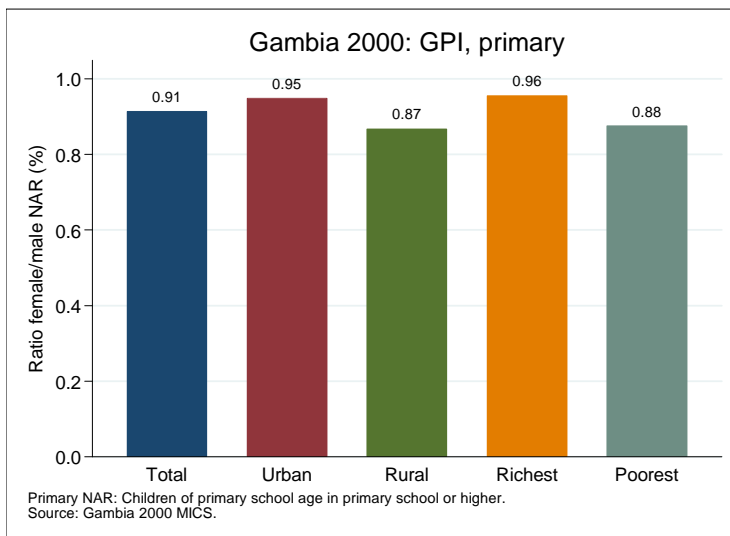
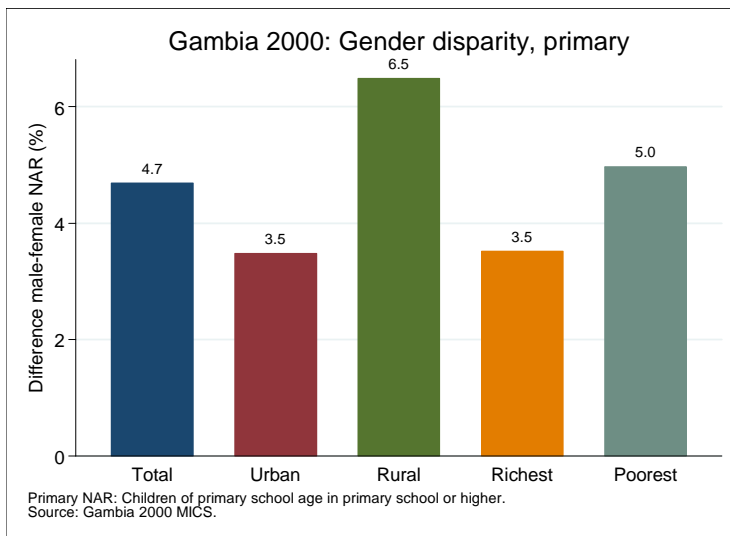
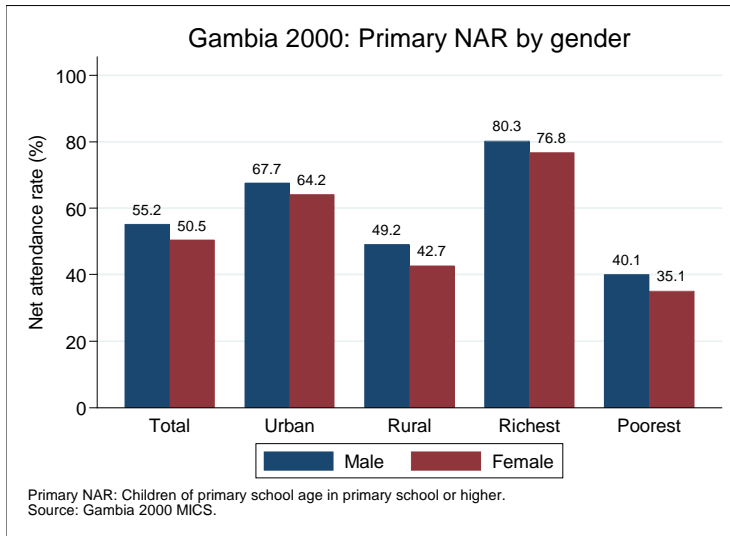
<b>Net attendance rate (%)</b>	<b>Total</b>	<b>Male</b>	<b>Female</b>	<b>Urban</b>	<b>Rural</b>	<b>Richest</b>	<b>Poorest</b>
Primary school NAR	52.8	55.2	50.5	65.8	46.0	78.4	37.7
Secondary school NAR	20.9	22.5	19.4	36.6	11.3	44.8	7.1
<b>Gross attendance rate (%)</b>	<b>Total</b>	<b>Male</b>	<b>Female</b>	<b>Urban</b>	<b>Rural</b>	<b>Richest</b>	<b>Poorest</b>
Primary school GAR	72.6	78.6	66.7	86.7	65.3	100.2	53.3
Secondary school GAR	22.6	24.5	20.9	39.7	12.3	49.7	7.9
<b>Primary age in school (%)</b>	<b>Total</b>	<b>Male</b>	<b>Female</b>	<b>Urban</b>	<b>Rural</b>	<b>Richest</b>	<b>Poorest</b>
Primary school	51.6	53.8	49.5	64.0	45.2	75.4	37.1
Secondary school	1.0	1.1	0.9	1.8	0.6	2.9	0.4
Preschool	4.2	4.2	4.2	6.4	3.0	6.7	2.5
Non-formal education	8.5	9.7	7.3	4.5	10.6	2.0	8.1
<b>Secondary age in school (%)</b>	<b>Total</b>	<b>Male</b>	<b>Female</b>	<b>Urban</b>	<b>Rural</b>	<b>Richest</b>	<b>Poorest</b>
Secondary school	20.7	22.3	19.2	36.4	11.1	44.7	7.0
Higher education	0.2	0.2	0.2	0.2	0.2	0.2	0.1
Primary school	30.3	36.9	24.1	30.9	29.9	31.3	27.0
Preschool	0.2	0.1	0.2	0.2	0.2	0.0	0.0
Non-formal education	7.5	9.5	5.7	1.2	11.3	2.1	9.8
<b>Entrance and transition (%)</b>	<b>Total</b>	<b>Male</b>	<b>Female</b>	<b>Urban</b>	<b>Rural</b>	<b>Richest</b>	<b>Poorest</b>
Primary net intake rate	15.5	17.5	13.5	18.6	13.9	20.1	9.3
Primary gross intake rate	51.7	54.9	48.3	61.2	46.6	65.1	43.7
Primary entrants with ECCE	46.8	45.3	48.6	62.1	36.1	74.0	14.0
Transition rate prim.-sec.	86.6	83.6	89.2	86.2	87.4	93.5	95.7
<b>Repetition and completion (%)</b>	<b>Total</b>	<b>Male</b>	<b>Female</b>	<b>Urban</b>	<b>Rural</b>	<b>Richest</b>	<b>Poorest</b>
Primary repetition rate	3.9	4.4	3.4	2.7	4.9	2.5	5.3
Primary dropout rate	1.3	1.0	1.6	1.2	1.3	0.4	0.7
Secondary repetition rate	2.1	2.9	1.1	1.2	3.7	2.8	5.3
Secondary dropout rate	4.4	4.3	4.5	5.1	3.1	7.1	1.2
Survival rate to grade 5	95.6	97.1	93.9	96.2	94.9	98.3	97.0
Survival rate to last prim. grade	94.9	95.9	93.7	96.1	93.5	98.1	96.5

Primary school NAR: children of primary school age in primary school or higher.

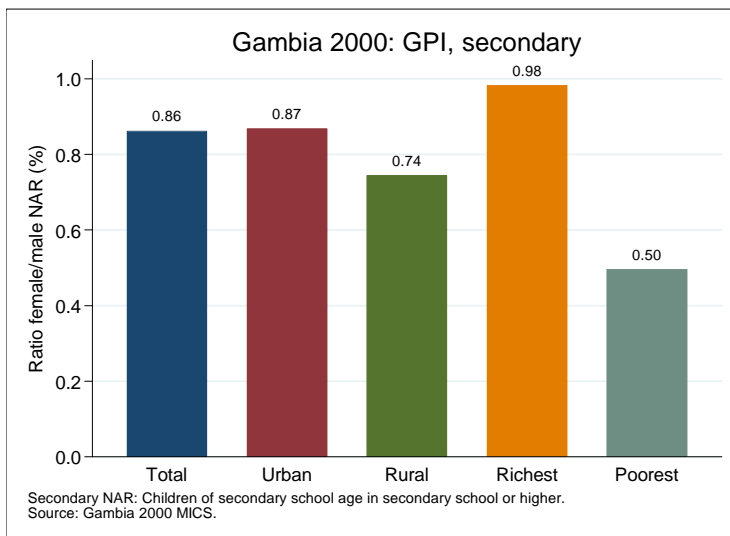
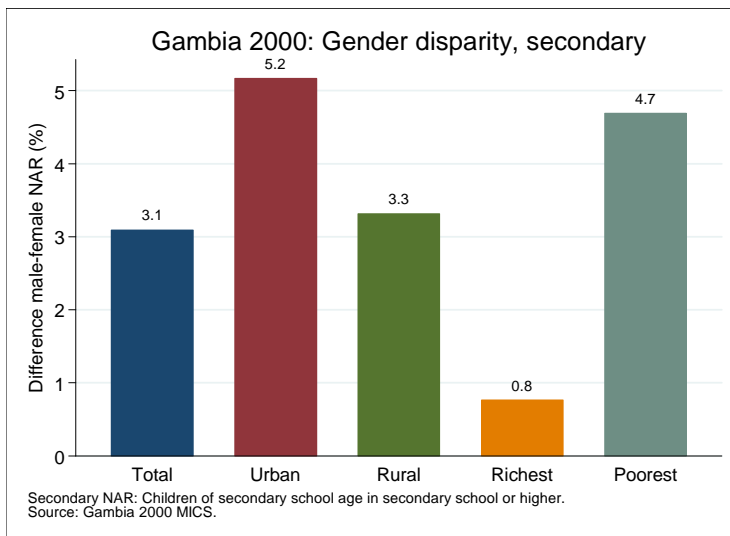
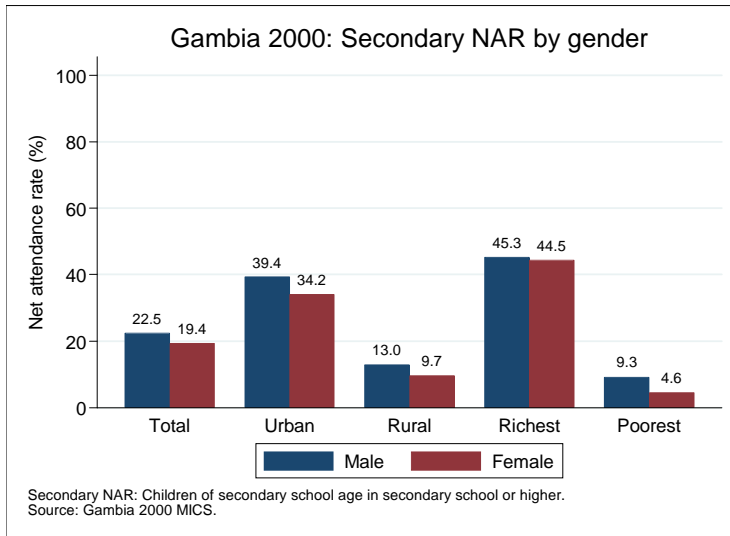
Secondary school NAR: children of secondary school age in secondary school or higher.

Data source: Gambia 2000 MICS.

## Gender disparity in primary school (survey data)



## Gender disparity in secondary school (survey data)



## Projections to 2015

