

WHO / UNICEF

Joint Monitoring Programme
for Water Supply and Sanitation

Estimates for the use of

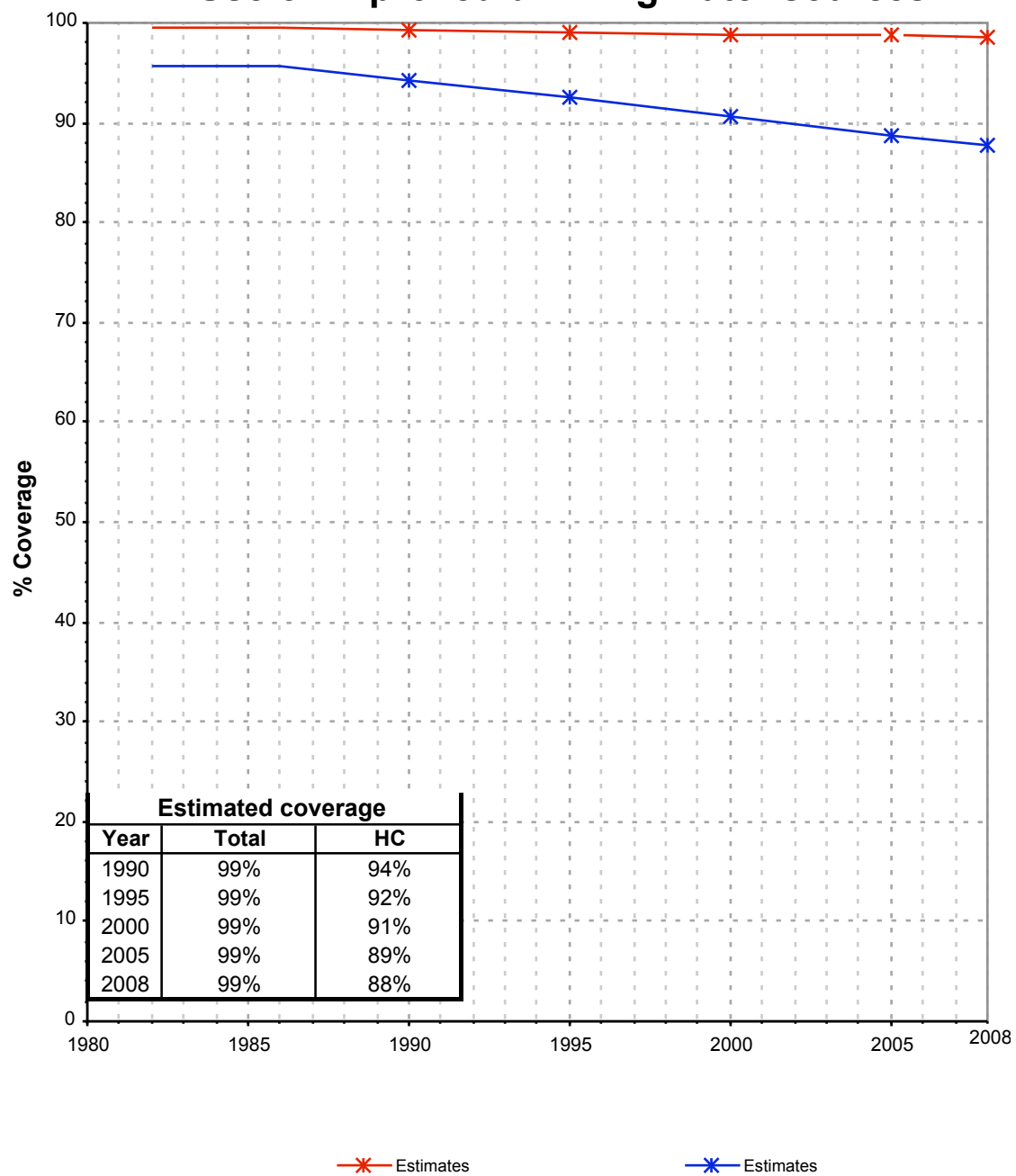
**Improved Drinking-Water Sources
and Improved Sanitation Facilities**

Updated March 2010

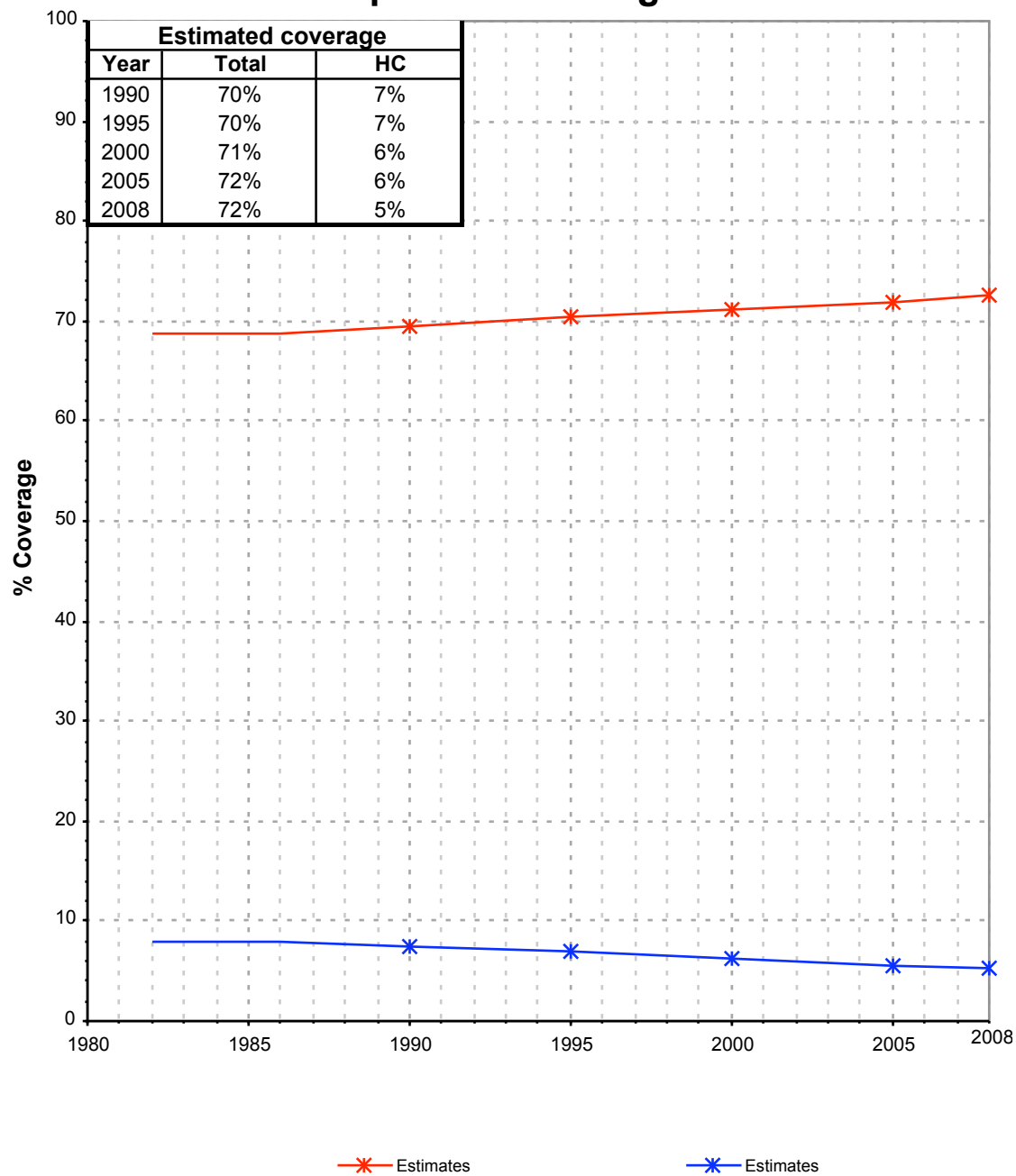
childinfo.org

Zimbabwe			DRINKING WATER							
			URBAN				RURAL			
			House connection		Total		House connection		Total	
Source	Code	Year	Used	Not used	Used	Not used	Used	Not used	Used	Not used
Demographic and Health Survey	DHS88	1988	95.3		99.2		9.1		67.8	
Demographic and Health Survey	DHS94	1994	92.6		99.0		4.3		69.7	
Inter-Censal Demographic Survey Report.	CSO97	1997	94.7		99.7		7.0		73.4	
Demographic and Health Survey	DHS99	1999	90.9		99.6		6.1		72.0	
Global Water Supply and Sanitation Assessment 2000.	JMP99	1999		96.4		99.6		2.4		77.3
World Health Survey	WHS03	2003	80.2		96.6		7.2		73.6	
Demographic and Health Survey	DHS05	2005	92.7		99.4		6.1		67.1	
Nutrition Surveillance Survey	NSS08	2008	90.1		99.0		4.7		73.5	

Zimbabwe - urban - Use of improved drinking water sources



Zimbabwe - rural - Use of improved drinking water sources



Drinking Water

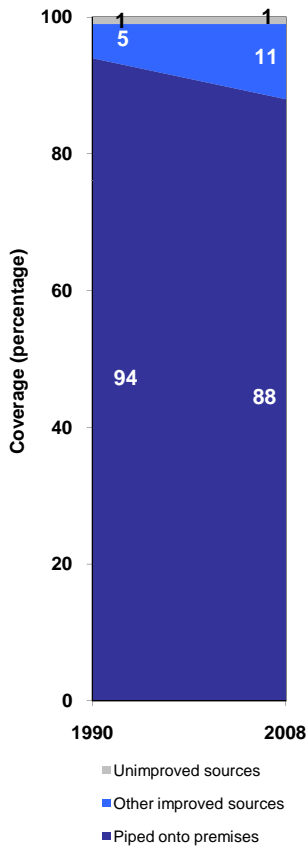
Zimbabwe	Drinking water coverage estimates					
	Urban (%)		Rural (%)		Total (%)	
	1990	2008	1990	2008	1990	2008
Piped into premises	94	88	7	5	32	36
Other improved source	5	11	63	67	46	46
Unimproved source	1	1	30	28	22	18

Source: WHO/UNICEF JMP, 2010

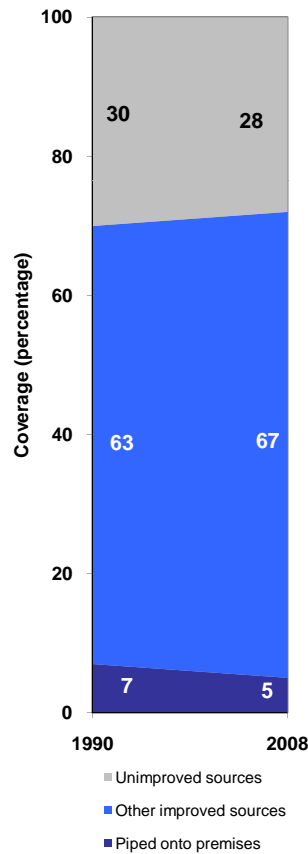
Zimbabwe	Urban		Rural		Total	
	1990	2008	1990	2008	1990	2008
Population (x1000)	3 032	4 644	7429	7818	10461	12463

Source: UN / Population Division, 2008

Urban drinking water trends



Rural drinking water trends



Total drinking water trends

