

**WHO / UNICEF**

**Joint Monitoring Programme**  
for Water Supply and Sanitation

Estimates for the use of

**Improved Drinking-Water Sources  
and Improved Sanitation Facilities**

Updated March 2010

[childinfo.org](http://childinfo.org)







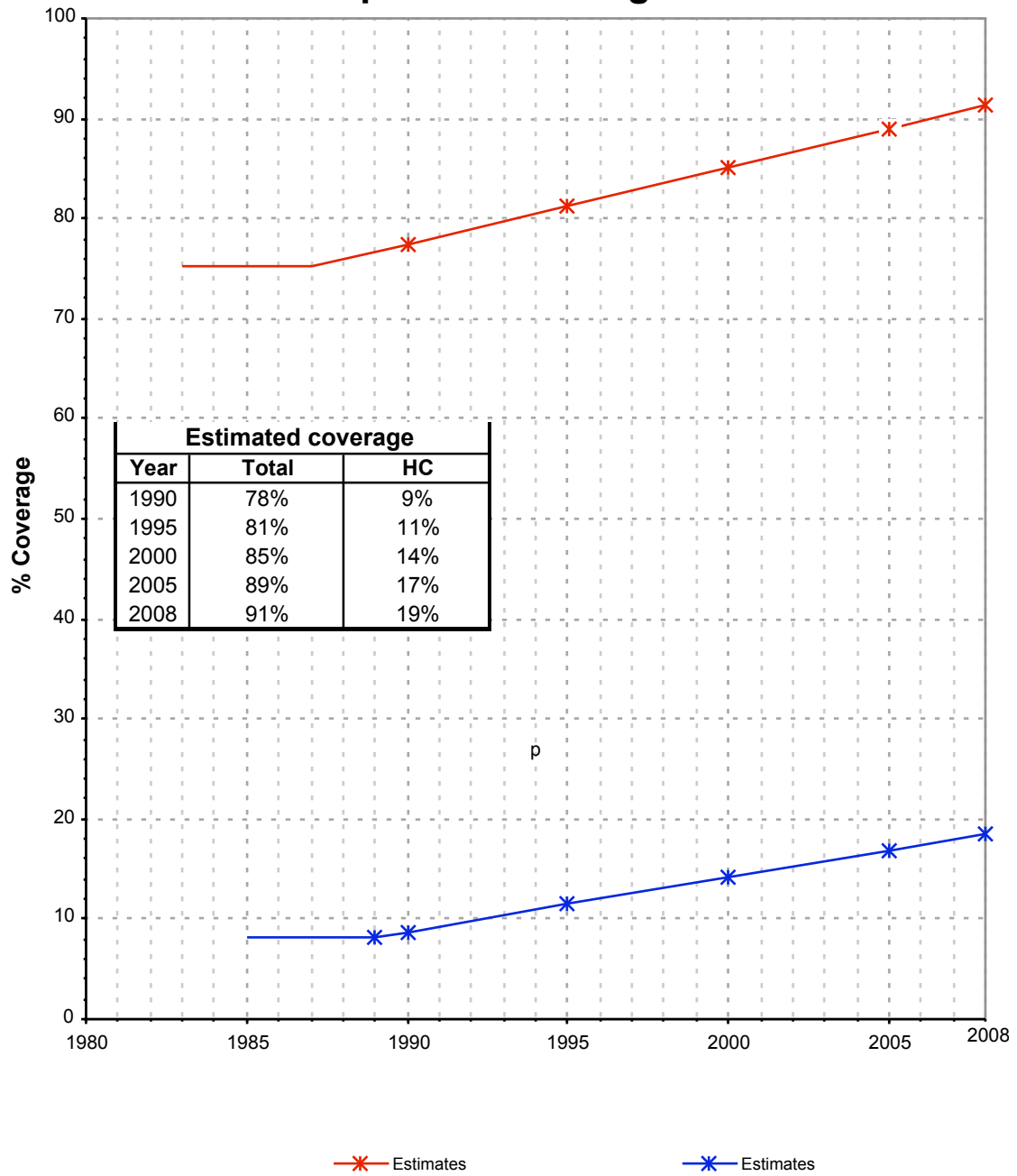




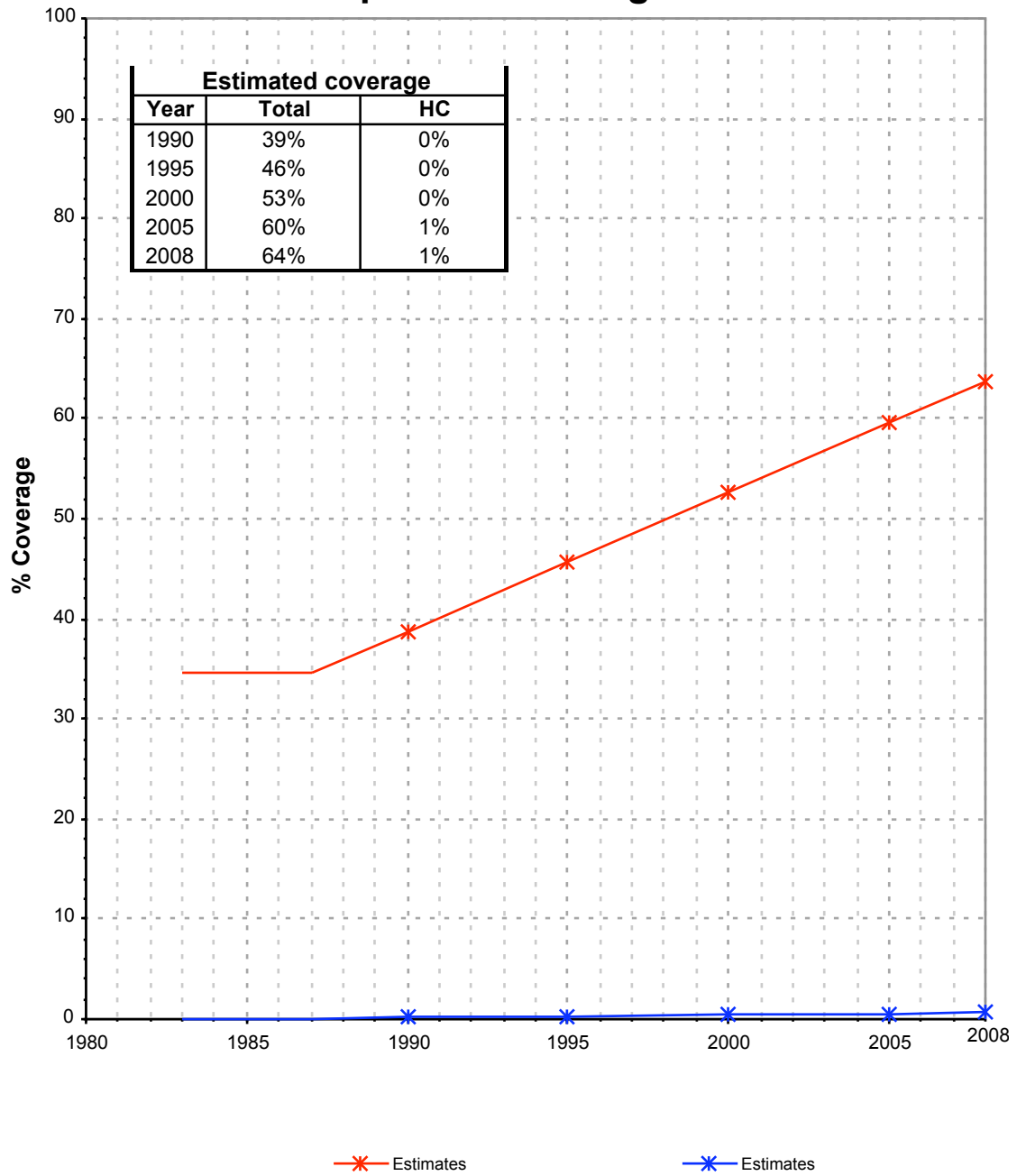
Access to drinking water sources		DHS06		Uganda		
Demographic and Health Survey						
Macro-International				2006		
Original denomination	Classification	Urban	Rural	Total		
	<b>Tap water</b>	56.5	6.7	13.7		
	House connections	20.7	0.7	3.3		
Piped water into dwelling, yard or plot	Piped water into dwelling	20.7	0.7	3.3		
	Piped water to yard/plot					
Public tap, standpipe	Public tap, standpipe	35.8	6.0	9.8		
	Other					
	<b>Ground water</b>	37.1	78.8	73.5		
	Protected ground water	32.3	56.6	53.4		
	Unprotected ground water	4.8	22.3	20.1		
Protected dug wells/springs	Protected wells or springs	15.3	20.3	19.7		
	Private					
	Public					
	Other					
Unprotected dug wells/springs	Unprotected wells or springs	4.8	22.3	20.1		
	Private					
	Public					
	Other					
	<b>All wells</b>	17.0	36.2	33.7		
	Private					
	Public					
	Other					
Tubewell, borehole	Tubewell, borehole	17.0	36.2	33.7		
	Private					
	Public					
	Other					
	<b>Traditional wells</b>					
	Private					
	Public					
	Other					
	Protected well					
	Private					
	Public					
	Other					
	Unprotected well					
	Private					
	Public					
	Other					
	<b>All springs</b>					
	Private					
	Public					
	Other					
	Protected spring					
	Private					
	Public					
	Other					
	Unprotected spring					
	Private					
	Public					
	Other					
Rainwater	<b>Rainwater</b>	0.5	0.6	0.6		
	Covered cistern/tank					
	Uncovered cistern/tank					
	<b>Bottled water</b>	0.5	0.0	0.1		
Bottled water with improved source	with other improved	0.5	0.0	0.1		
Bottled water without improved source	without other improved	0.0	0.0	0.0		
Surface water	<b>Surface water</b>	4.4	12.7	11.7		
	River					
	Lake					
	Dam					
	Pond					
	Stream					
	Irrigation channel					
	Other					
	<b>Other improved sources</b>					
	Other					
	Other					
	<b>Other non-improved</b>	1.0	1.2	1.1		
	Cart with small tank/drum					
	Tanker truck provided					
Tanker truck/cart with small tank/drum	Other	0.6	0.2	0.2		
Other	Other	0.4	1.0	0.9		
	<b>DK/missing</b>					
	<b>Total</b>	100.0	100.0	100.1		
<b>Calculations</b>						
<b>Estimations</b>						
<b>Access to improved drinking water sources :</b>		<b>89%</b>	<b>63%</b>	<b>67%</b>		
<b>Access to house water connections :</b>		<b>21%</b>	<b>1%</b>	<b>3%</b>		
Used for the estimates		Yes	Yes			
Used for the estimates		Yes	Yes			
<b>Ratios</b>	HC / Tap water	37%	10%			
	Public tap / Tap water	63%	90%			
	Tubewell + protected well / All wells					
	Protected wells / Traditional wells					
	Tubewell / All wells	100%	100%			
	Protected springs / All springs					
Protect. well & spring / well & spring	76%	48%				
	Number of people covered by the survey:					
	Number of households covered by the survey:					
	Total population:					
<b>Comments</b>						

Uganda			DRINKING WATER								
			URBAN				RURAL				
			House connection		Total		House connection		Total		
Source	Code	Year	Used	Not used	Used	Not used	Used	Not used	Used	Not used	
Demographic and Household Survey	DHS89	1989		27.6	80.7			0.3		39.2	
Census	CEN91	1991	9.3		74.0			0.2			18.4
Demographic and Household Survey	DHS95	1995	12.7		78.0			0.1		44.6	
Global Water Supply and Sanitation Assessment 2000.	JMP99	1999		9.5		72.1			1.6		20.9
National Household Survey	UNHS00	2000			87.0					51.0	
Demographic and Household Survey	DHS01	2001	12.1		89.3			0.2		51.1	
Census	CEN02	2002			90.7					56.6	
National Household Survey	UNHS03	2003			84.0					57.0	
Demographic and Health Survey	DHS05	2005	15.0		90.4			0.7		56.6	
National Household Survey	UNHS06	2006			86.8					63.6	
Demographic and Health Survey	DHS06	2006	20.7		89.3			0.7		63.2	

# Uganda - urban - Use of improved drinking water sources



# Uganda - rural - Use of improved drinking water sources



# Drinking Water

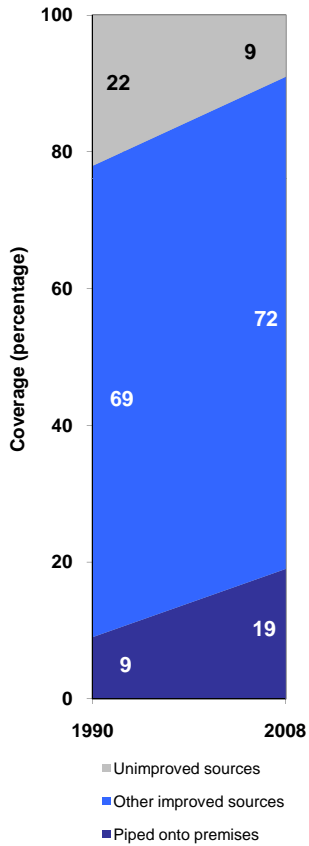
Uganda	Drinking water coverage estimates					
	Urban (%)		Rural (%)		Total (%)	
	1990	2008	1990	2008	1990	2008
Piped into premises	9	19	0	1	1	3
Other improved source	69	72	39	63	42	64
Unimproved source	22	9	61	36	57	33

Source: WHO/UNICEF JMP, 2010

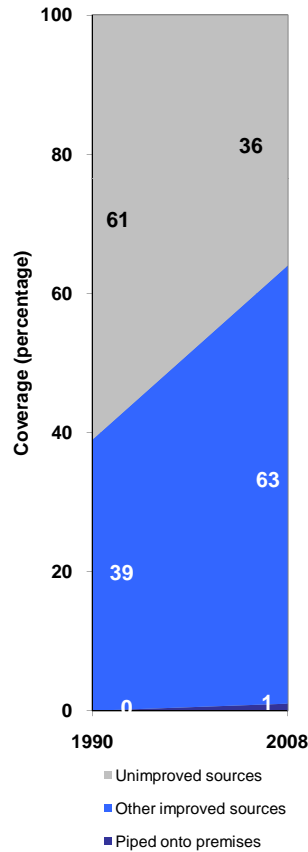
Uganda	Urban		Rural		Total	
	1990	2008	1990	2008	1990	2008
Population (x1000)	1 964	4 101	15767	27555	17731	31657

Source: UN / Population Division, 2008

Urban drinking water trends



Rural drinking water trends



Total drinking water trends

