

WHO / UNICEF

Joint Monitoring Programme
for Water Supply and Sanitation

Estimates for the use of

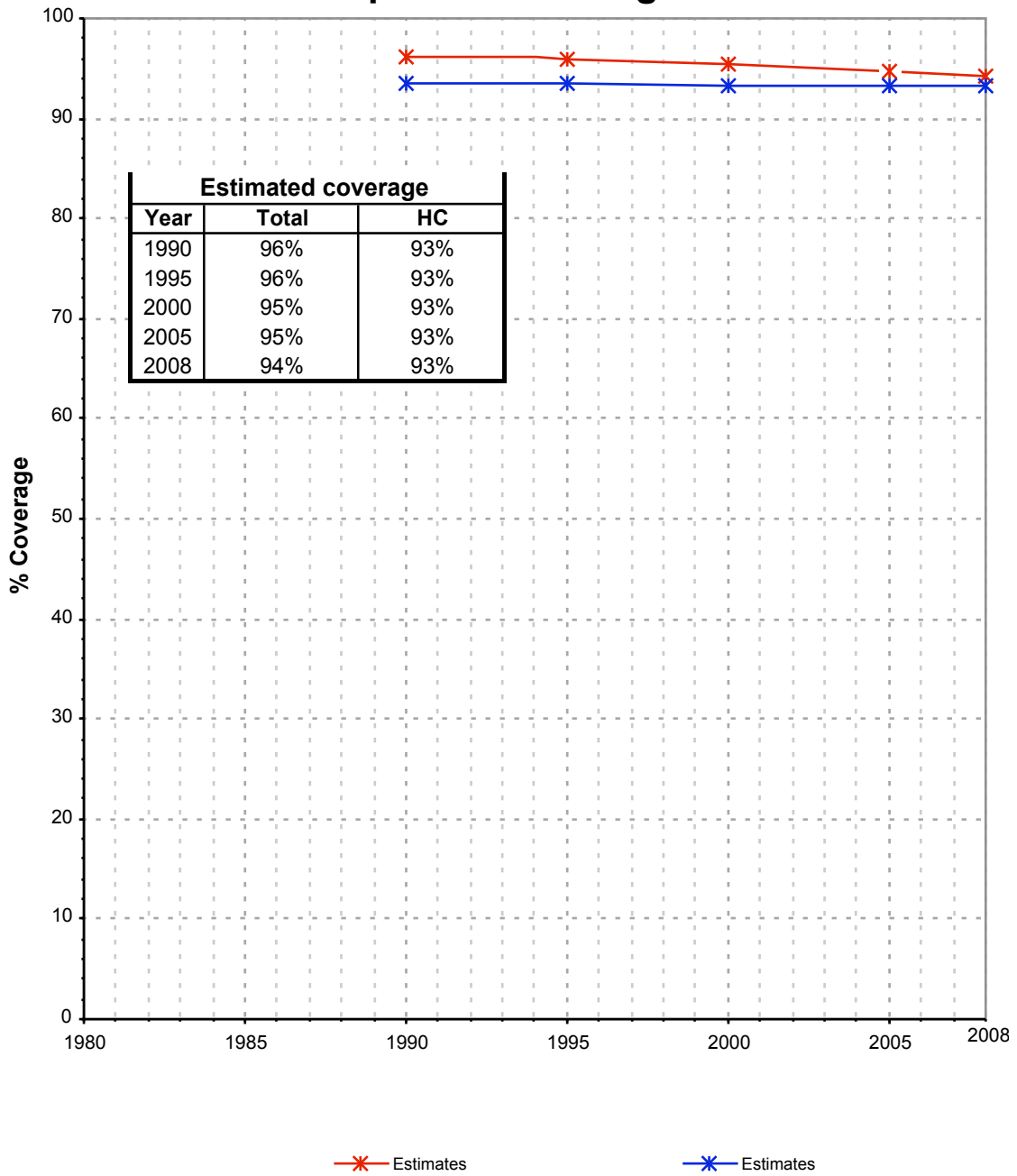
**Improved Drinking-Water Sources
and Improved Sanitation Facilities**

Updated March 2010

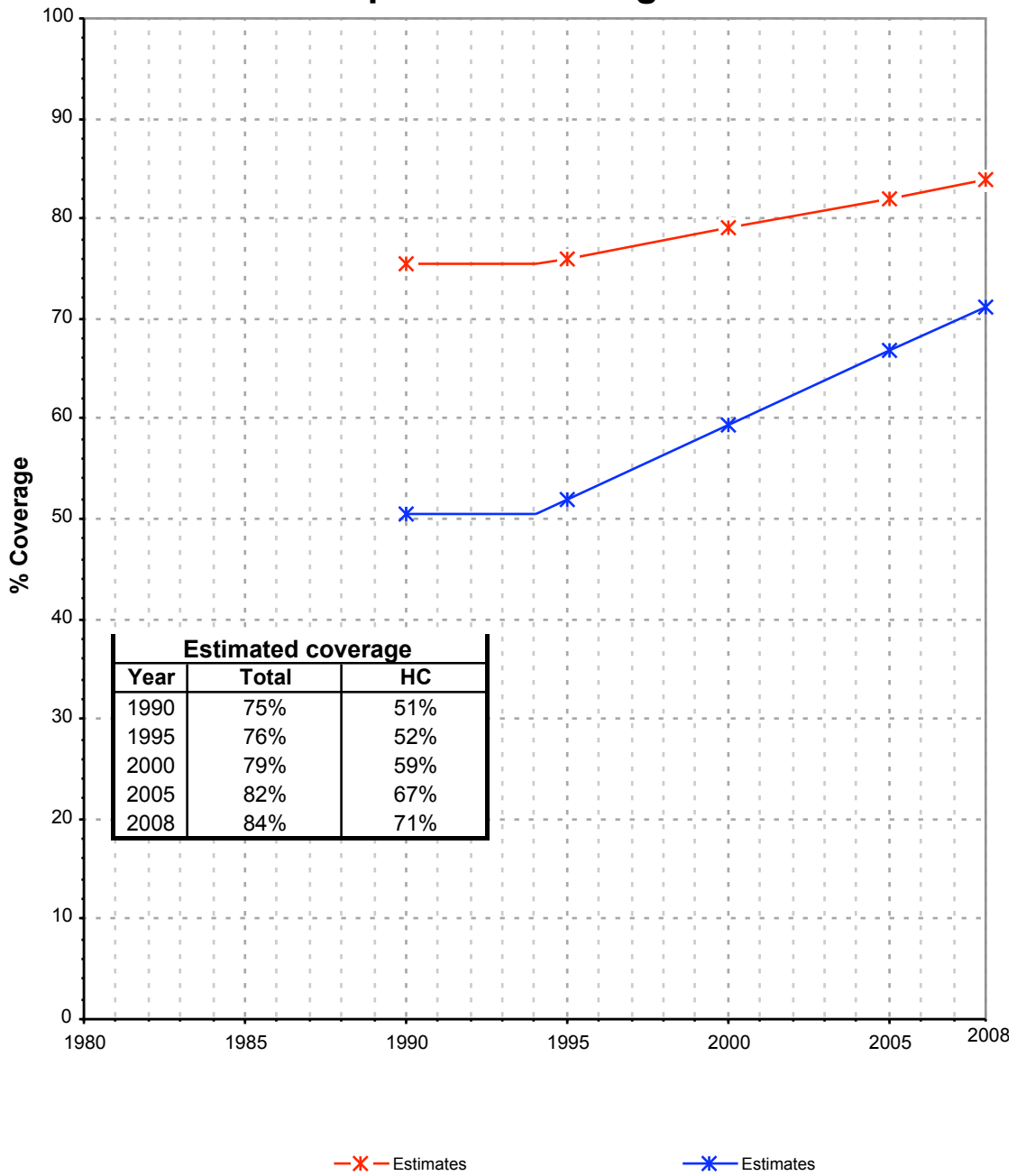
childinfo.org

Syrian Arab Republic			DRINKING WATER							
			URBAN				RURAL			
			House connection		Total		House connection		Total	
Source	Code	Year	Used	Not used	Used	Not used	Used	Not used	Used	Not used
Multiple Indicator Cluster Survey	MICS96	1996	92.7		95.2		51.6		75.1	
Pan Arab Project for Family Health	PAPFAM02	2002	95.0		96.8		67.1		84.2	
Multiple Indicator Cluster Survey	MICS06	2006	92.2		93.6		65.4		80.3	

Syrian Arab Republic - urban - Use of improved drinking water sources



Syrian Arab Republic - rural - Use of improved drinking water sources



Drinking Water

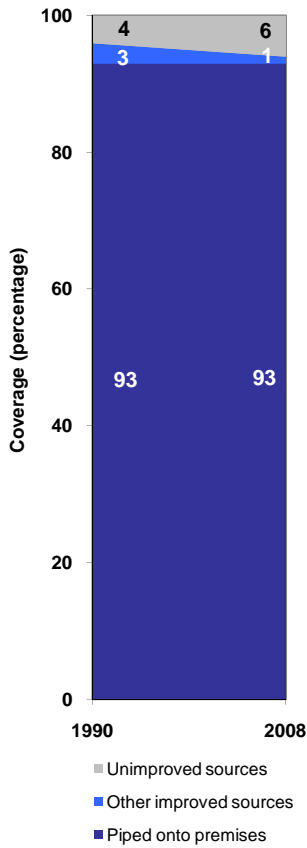
Syrian Arab Republic	Drinking water coverage estimates					
	Urban (%)		Rural (%)		Total (%)	
	1990	2008	1990	2008	1990	2008
Piped into premises	93	93	51	71	72	83
Other improved source	3	1	24	13	13	6
Unimproved source	4	6	25	16	15	11

Source: WHO/UNICEF JMP, 2010

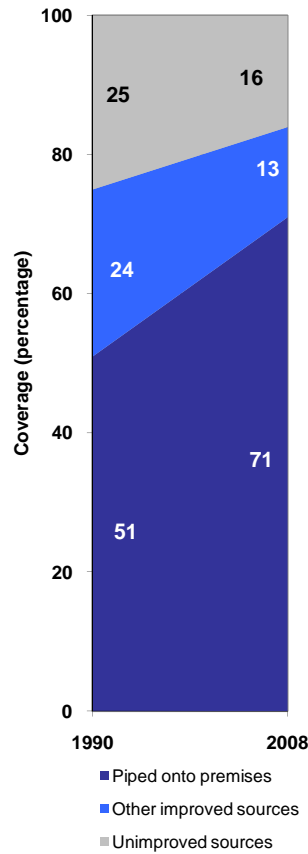
Syrian Arab Republic	Urban		Rural		Total	
	1990	2008	1990	2008	1990	2008
Population (x1000)	6224	11496	6496	9731	12721	21227

Source: UN / Population Division, 2008

Urban drinking water trends



Rural drinking water trends



Total drinking water trends

