

**WHO / UNICEF**

**Joint Monitoring Programme**  
for Water Supply and Sanitation

Estimates for the use of

**Improved Drinking-Water Sources  
and Improved Sanitation Facilities**

Updated March 2010

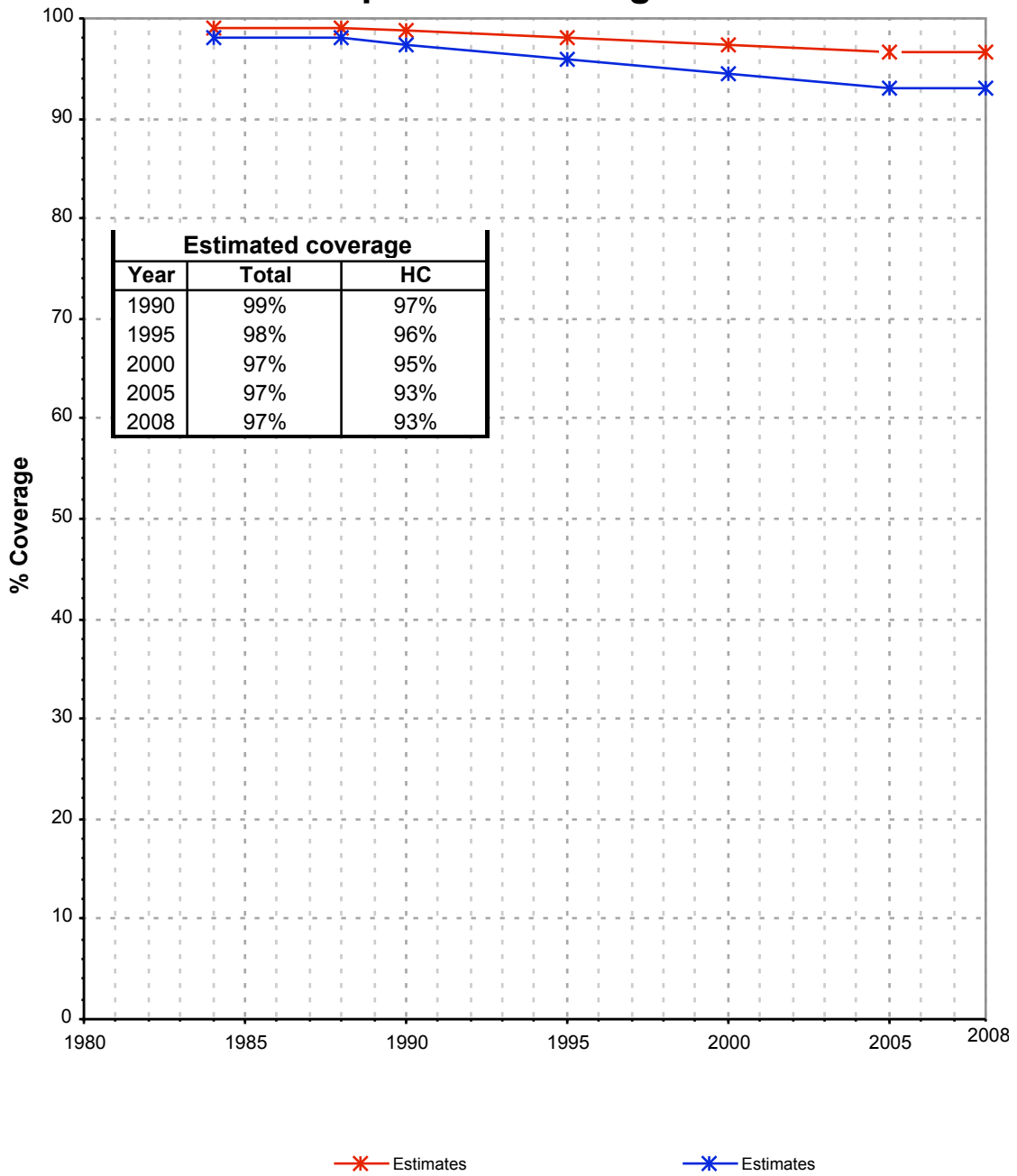
[childinfo.org](http://childinfo.org)



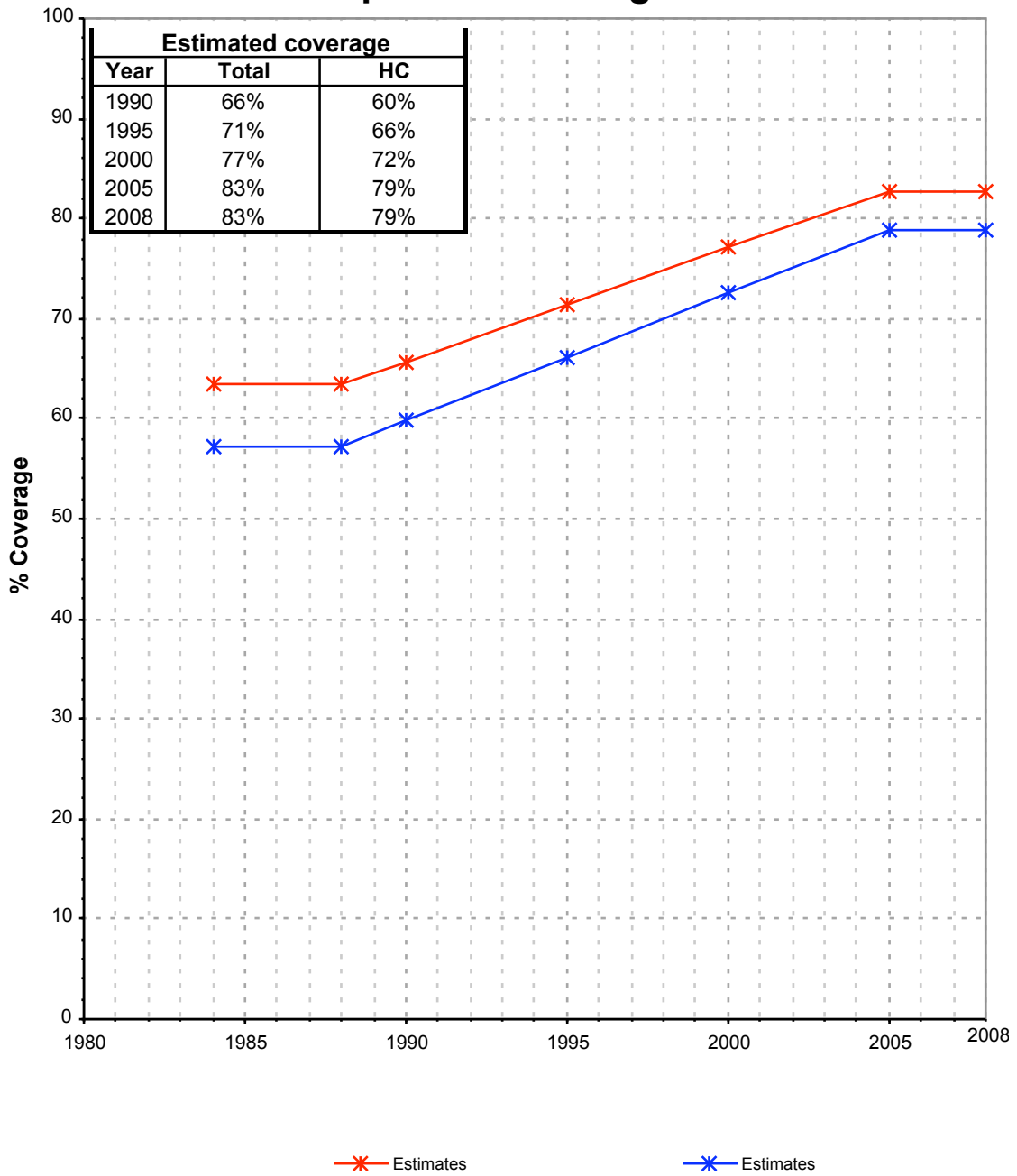


Panama			DRINKING WATER							
			URBAN				RURAL			
			House connection		Total		House connection		Total	
Source	Code	Year	Used	Not used	Used	Not used	Used	Not used	Used	Not used
Living Standarts Measurement Survey	LSMS97	1997	95.9		99.1		71.7		76.7	
Living Standarts Measurement Survey	LSMS03	2003	94.1		96.8		77.3		80.7	
Population census	CEN90	1990	97.4		98.3		59.2		64.9	
Population census	CEN00	2000	93.6		96.5		69.1		74.6	

## Panama - urban - Use of improved drinking water sources



## Panama - rural - Use of improved drinking water sources



# Drinking Water

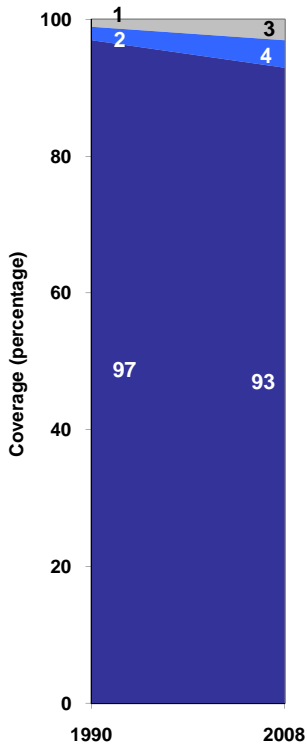
Panama	Drinking water coverage estimates					
	Urban (%)		Rural (%)		Total (%)	
	1990	2008	1990	2008	1990	2008
Piped into premises	97	93	60	79	80	89
Other improved source	2	4	6	4	4	4
Unimproved source	1	3	34	17	16	7

Source: WHO/UNICEF JMP, 2010

Panama	Urban		Rural		Total	
	1990	2008	1990	2008	1990	2008
Population (x1000)	1,300	2,492	1,113	907	2,413	3,399

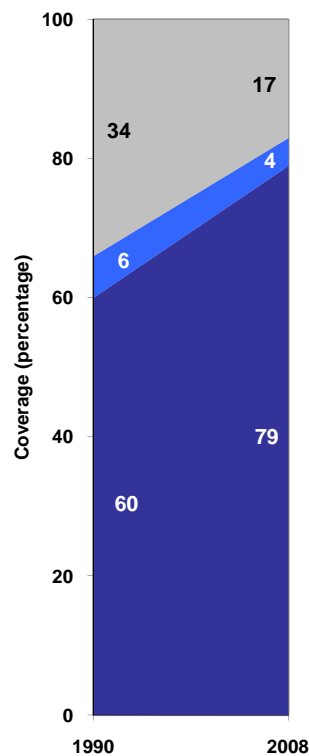
Source: UN / Population Division, 2008

Urban drinking water trends



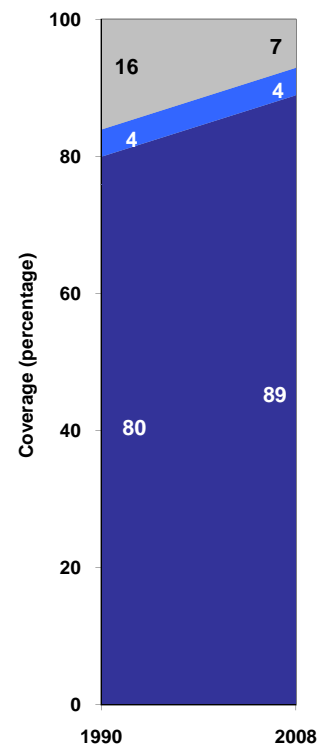
■ Unimproved sources  
■ Other improved sources  
■ Piped onto premises

Rural drinking water trends



■ Piped onto premises  
■ Other improved sources  
■ Unimproved sources

Total drinking water trends



■ Unimproved sources  
■ Other improved sources  
■ Piped onto premises