

**WHO / UNICEF**

**Joint Monitoring Programme**  
for Water Supply and Sanitation

Estimates for the use of

**Improved Drinking-Water Sources  
and Improved Sanitation Facilities**

Updated March 2010

[childinfo.org](http://childinfo.org)





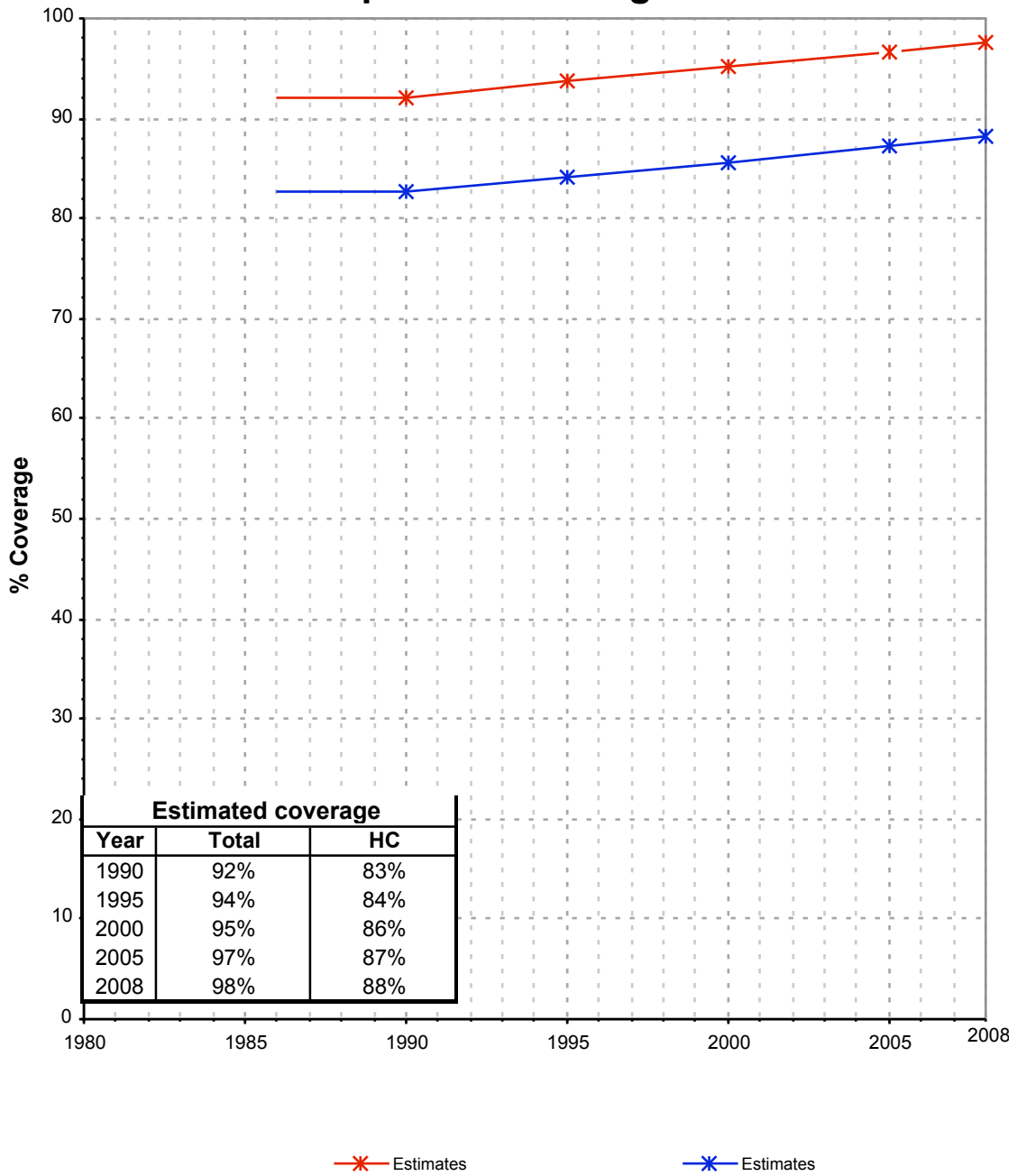




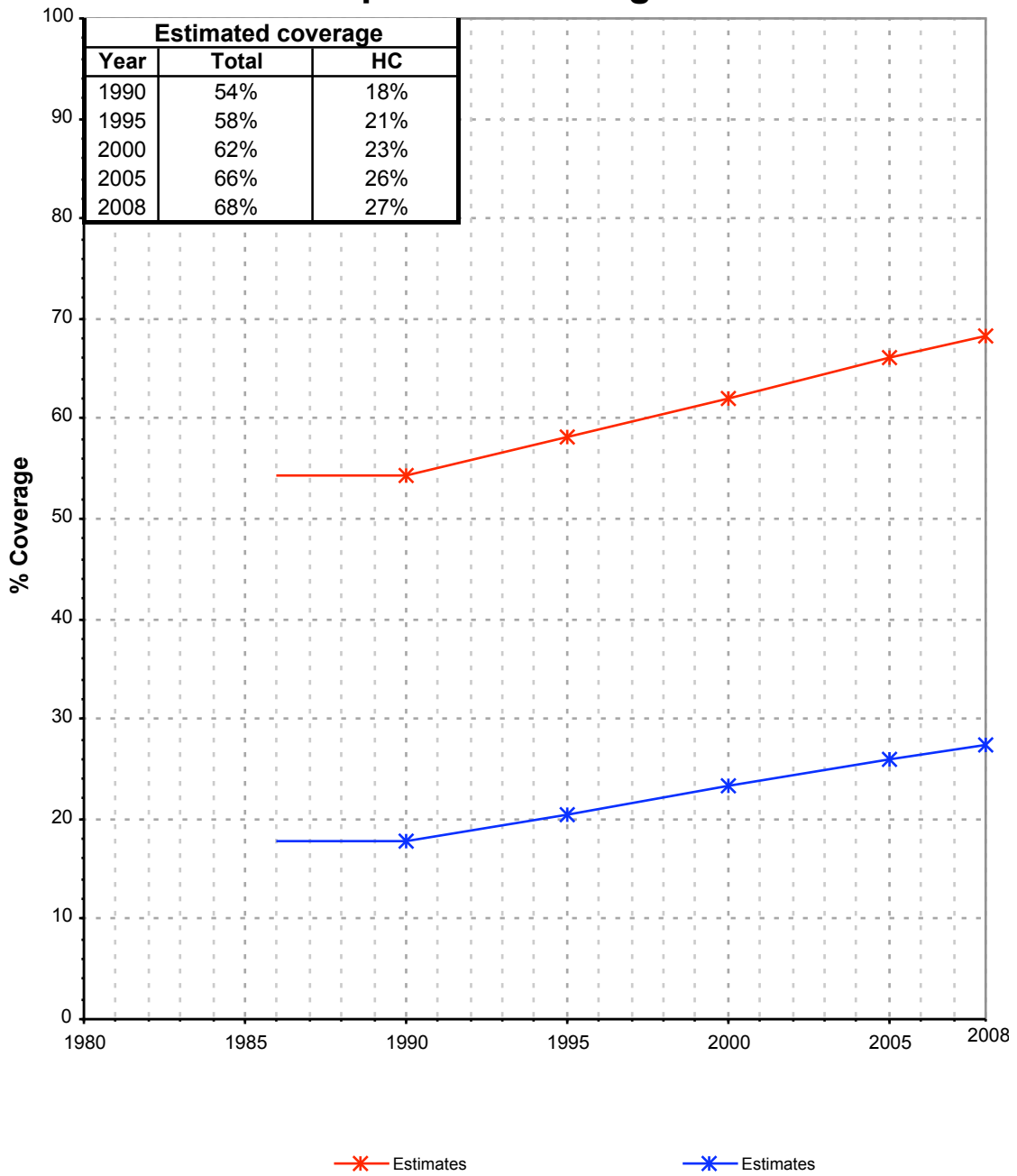


Nicaragua			DRINKING WATER							
			URBAN				RURAL			
			House connection		Total		House connection		Total	
Source	Code	Year	Used	Not used	Used	Not used	Used	Not used	Used	Not used
Demographic and Health Survey	DHS92	1992	89.1		97.6		16.5		57.7	
Living Standarts Measurement Survey	LSMS93	1993	80.0		88.8		20.6		56.1	
Demographic and Health Survey	DHS98	1998	88.6		93.5		24.7		57.9	
Living Standarts Measurement Survey	LSMS98	1998	79.4		94.4		20.0		59.3	
Global Water Supply and Sanitation Assessment 2000.	JMP99	1998		88.3		95.0		14.4		33.6
Demographic and Health Survey	DHS01	2001	87.1		96.3		27.6		64.4	
Living Standarts Measurement Survey	LSMS01	2001	81.1		93.8		23.1		62.7	
Censo, 2005	CEN05	2005			98.0				69.0	
	ENDES A06	2006	91.1		97.1		24.1		64.8	

## Nicaragua - urban - Use of improved drinking water sources



## Nicaragua - rural - Use of improved drinking water sources



# Drinking Water

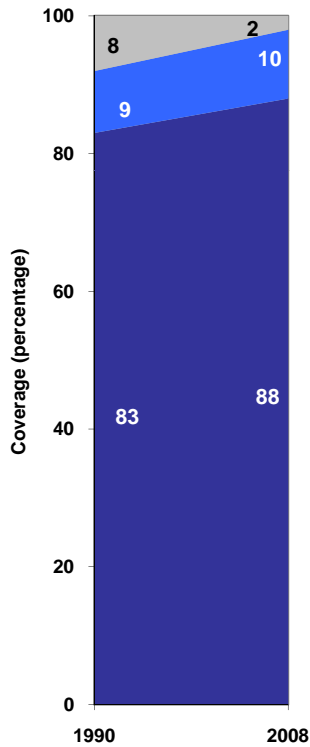
Nicaragua	Drinking water coverage estimates					
	Urban (%)		Rural (%)		Total (%)	
	1990	2008	1990	2008	1990	2008
Piped into premises	83	88	18	27	52	62
Other improved source	9	10	36	41	22	23
Unimproved source	8	2	46	32	26	15

Source: WHO/UNICEF JMP, 2010

Nicaragua	Urban		Rural		Total	
	1990	2008	1990	2008	1990	2008
Population (x1000)	2,166	3,215	1,972	2,452	4,138	5,667

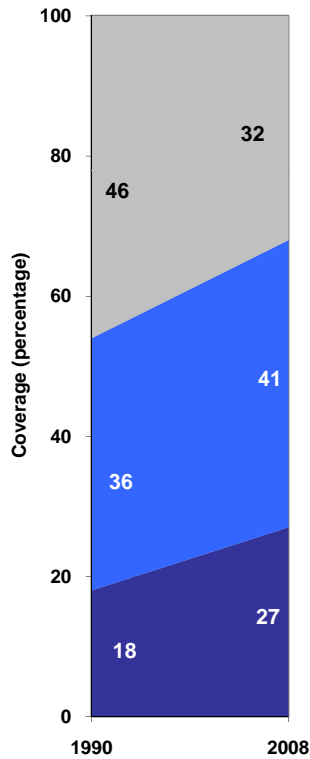
Source: UN / Population Division, 2008

Urban drinking water trends



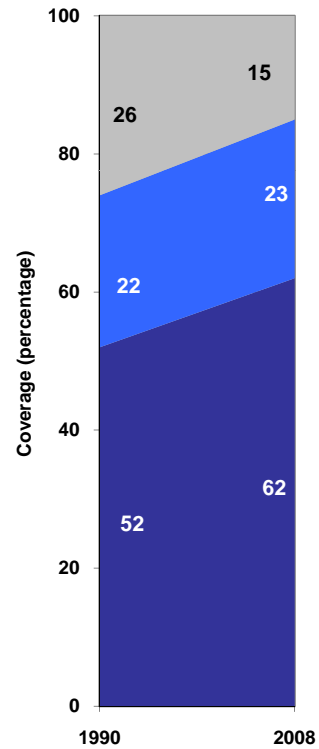
■ Unimproved sources  
■ Other improved sources  
■ Piped onto premises

Rural drinking water trends



■ Unimproved sources  
■ Other improved sources  
■ Piped onto premises

Total drinking water trends



■ Unimproved sources  
■ Other improved sources  
■ Piped onto premises