

WHO / UNICEF

Joint Monitoring Programme
for Water Supply and Sanitation

Estimates for the use of

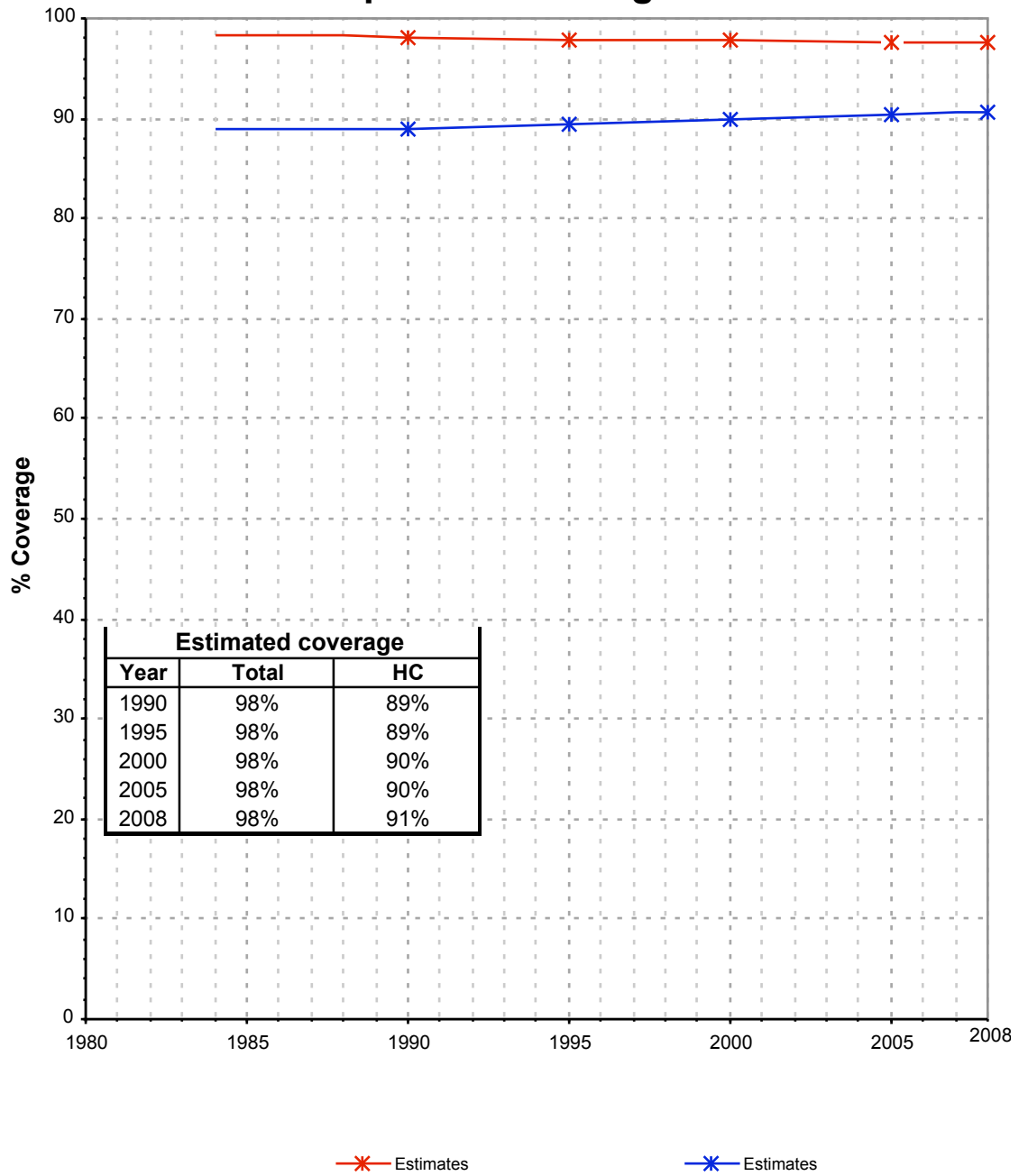
**Improved Drinking-Water Sources
and Improved Sanitation Facilities**

Updated March 2010

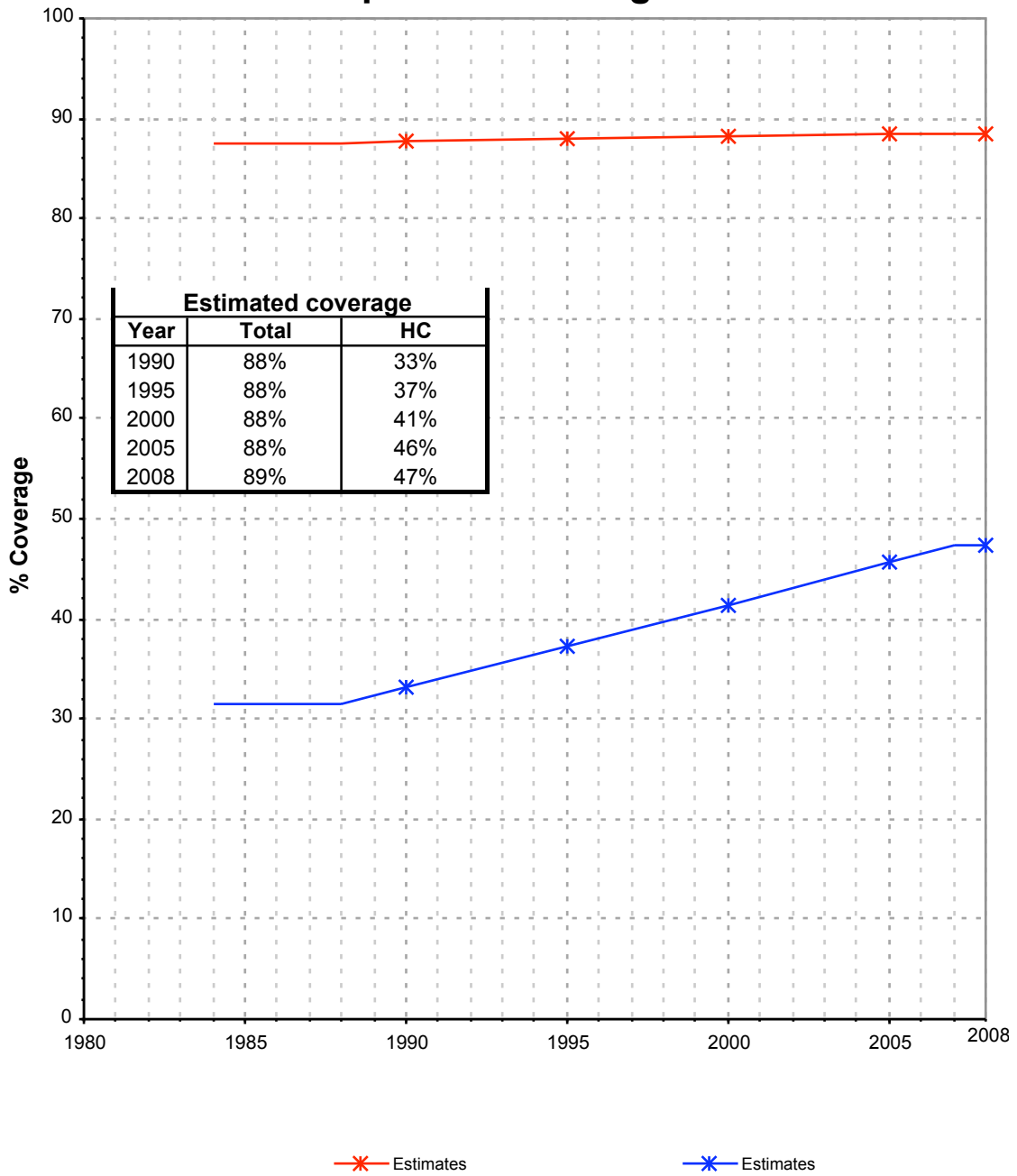
childinfo.org

| Jamaica | | | DRINKING WATER | | | | | | | |
|-----------------------------------|---------|------|------------------|----------|-------|----------|------------------|----------|-------|----------|
| | | | URBAN | | | | RURAL | | | |
| | | | House connection | | Total | | House connection | | Total | |
| Source | Code | Year | Used | Not used | Used | Not used | Used | Not used | Used | Not used |
| Survey of Living Conditions | SLC90 | 1990 | 87.6 | | 97.5 | | 33.2 | | 87.8 | |
| Survey of Living Conditions | SLC95 | 1995 | 88.0 | | 97.9 | | 35.7 | | 89.0 | |
| PAHO | RPAHO98 | 1998 | 91.3 | | 98.9 | | 39.4 | | 87.2 | |
| Survey of Living Conditions | SLC99 | 1999 | 91.3 | | 98.9 | | 39.4 | | 88.7 | |
| Multiple Indicator Cluster Survey | MICS00 | 2000 | 92.4 | | 97.3 | | 46.0 | | 82.8 | |
| Survey of Living Conditions | SLC01 | 2001 | 93.6 | | 98.9 | | 44.8 | | 93.2 | |
| Survey of Living Conditions | SLC02 | 2002 | 87.1 | | 95.9 | | 40.3 | | 88.4 | |
| Multiple Indicator Cluster Survey | MICS05 | 2005 | 87.2 | | 97.3 | | 44.5 | | 88.3 | |

Jamaica - urban - Use of improved drinking water sources



Jamaica - rural - Use of improved drinking water sources



Drinking Water

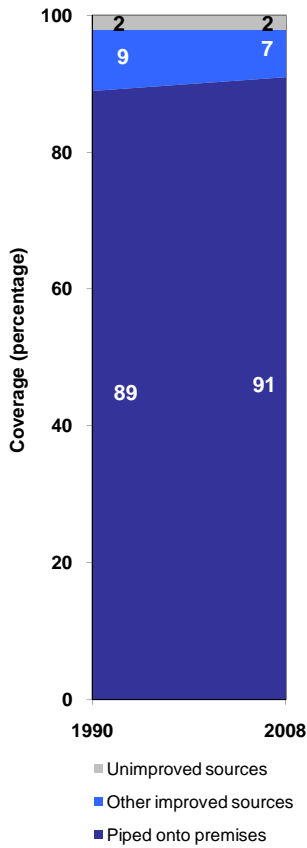
| Jamaica | Drinking water coverage estimates | | | | | |
|-----------------------|-----------------------------------|------|-----------|------|-----------|------|
| | Urban (%) | | Rural (%) | | Total (%) | |
| | 1990 | 2008 | 1990 | 2008 | 1990 | 2008 |
| Piped into premises | 89 | 91 | 33 | 47 | 61 | 70 |
| Other improved source | 9 | 7 | 55 | 42 | 32 | 24 |
| Unimproved source | 2 | 2 | 12 | 11 | 7 | 6 |

Source: WHO/UNICEF JMP, 2010

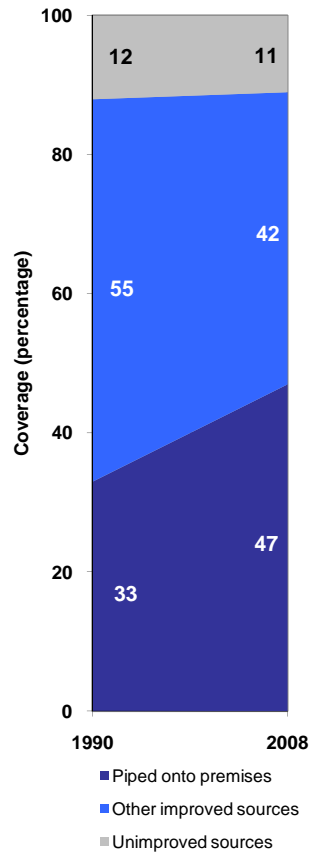
| Jamaica | Urban | | Rural | | Total | |
|--------------------|-------|-------|-------|-------|-------|-------|
| | 1990 | 2008 | 1990 | 2008 | 1990 | 2008 |
| Population (x1000) | 1,169 | 1,442 | 1,195 | 1,266 | 2,364 | 2,708 |

Source: UN / Population Division, 2008

Urban drinking water trends



Rural drinking water trends



Total drinking water trends

