

**WHO / UNICEF**

**Joint Monitoring Programme**  
for Water Supply and Sanitation

Estimates for the use of

**Improved Drinking-Water Sources  
and Improved Sanitation Facilities**

Updated March 2010

[childinfo.org](http://childinfo.org)

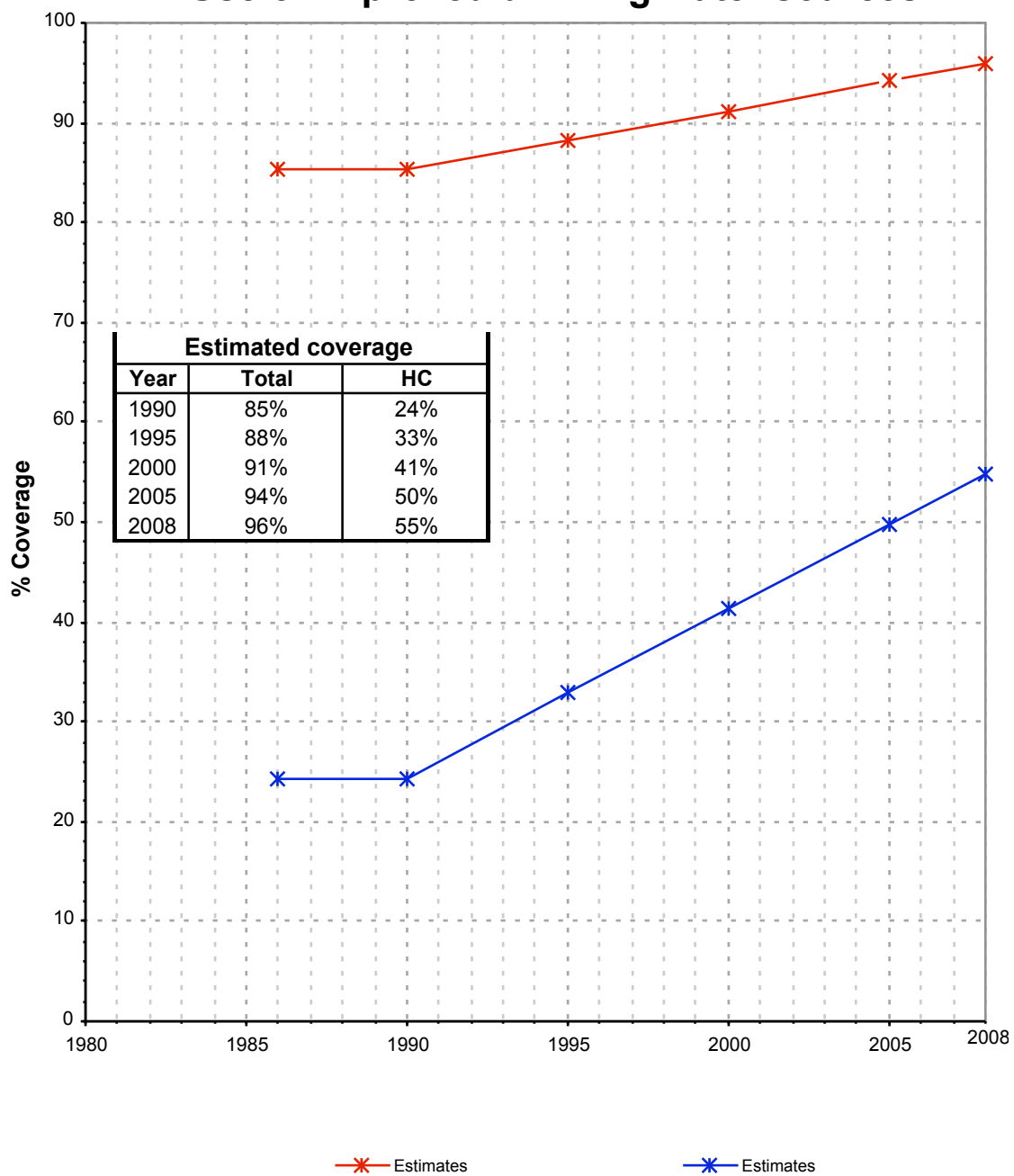
Access to drinking water sources		JMP99			Gambia			Access to drinking water sources		MICS00			Gambia		
Global Water Supply and Sanitation Assessment 2000.					Multiple Indicator Cluster Survey					Government of The Gambia in collaboration with UNICEF.					
Water Supply and Sanitation Sector Questionnaire - 1999. Form 6 sent to WHO.					1999					2000					
Original denomination	Classification	Urban	Rural	Total	Original denomination	Classification	Urban	Rural	Total						
Population served with household connection	<b>Tap water</b>	75.0	0.0		Population served with household connection	<b>Tap water</b>	90.6	34.7							
	House connections	75.0	0.0			House connections	39.3	2.5							
	Piped water into dwelling					Piped water into dwelling	17.8	0.4							
	Piped water to yard/plot					Piped water to yard/plot	21.5	2.1							
	Public tap, standpipe					Public tap, standpipe	51.3	32.2							
	Other				Other										
Population without household connection but with reasonable access to a public	<b>Ground water</b>	5.0	52.5		Population without household connection but with reasonable access to a public	<b>Ground water</b>	7.8	64.9							
	Protected ground water	5.0	52.5			Protected ground water	3.9	42.5							
	Unprotected ground water					Unprotected ground water	3.9	22.4							
	Protected wells or springs					Protected wells or springs	3.9	42.5	0.0						
	Private					Private									
	Public					Public									
	Other					Other									
	Unprotected wells or springs					Unprotected wells or springs	3.9	22.4	0.0						
	Private					Private									
	Public					Public									
	Other					Other									
	<b>All wells</b>					<b>All wells</b>	7.8	64.8							
	Private					Private									
	Public					Public									
	Other					Other									
	Tubewell, borehole					Tubewell/borehole with pump	0.6	30.5							
	Private					Private									
	Public					Public									
	Other					Other									
	<b>Traditional wells</b>					<b>Traditional wells</b>	7.2	34.3							
	Private					Private									
	Public					Public									
	Other					Other									
	Protected well					Protected dug well	3.3	11.9							
	Private					Private									
	Public					Public									
	Other					Other									
Unprotected well				Unprotected dug well	3.9	22.4									
Private				Private											
Public				Public											
Other				Other											
<b>All springs</b>				<b>All springs</b>	0.0	0.1									
Private				Private											
Public				Public											
Other				Other											
Protected spring				Protected spring	0.0	0.1									
Private				Private											
Public				Public											
Other				Other											
Unprotected spring				Unprotected spring	0.0	0.0									
Private				Private											
Public				Public											
Other				Other											
<b>Rainwater</b>				<b>Rainwater</b>											
Covered cistern/tank				Covered cistern/tank											
Uncovered cistern/tank				Uncovered cistern/tank											
<b>Bottled water</b>				<b>Bottled water</b>	0.0	0.1									
with other improved				with other improved	0.0	0.1									
without other improved				without other improved	0.0	0.2									
<b>Surface water</b>				<b>Surface water</b>											
River				River											
Lake				Lake											
Dam				Dam											
Pond				Pond											
Stream				Stream											
Irrigation channel				Irrigation channel											
Other				Other											
<b>Other improved sources</b>				<b>Other improved sources</b>											
Other				Other											
Other				Other											
Total population unserved	<b>Other non-improved</b>	20.0	47.5		Total population unserved	<b>Other non-improved</b>	1.5	0.2							
	Cart with small tank/drum					Cart with small tank/drum									
	Tanker truck provided					Tanker truck provided	0.0	0.0							
	Other					Other	1.5	0.2							
	Other					Other									
	<b>DK/missing</b>					<b>DK/missing</b>	0.0	0.0							
	<b>Total</b>	100.0	100.0			<b>Total</b>	99.9	100.1							
Calculations					Calculations										
Estimations					Estimations										
<b>Access to improved drinking water sources :</b>		<b>80%</b>	<b>53%</b>		<b>Access to improved drinking water sources :</b>		<b>95%</b>	<b>77%</b>							
<b>Access to house connections :</b>		<b>75%</b>	<b>0%</b>		<b>Access to house connections :</b>		<b>39%</b>	<b>3%</b>							
Used for the estimates :		No	No		Used for the estimates :		Yes	Yes							
Used for the estimates :		No	No		Used for the estimates :		Yes	Yes							
Ratios	HC / Tap water	100%	#DIV/0!		Ratios	HC / Tap water	43%	7%							
	Public tap / Tap water					Public tap / Tap water	57%	93%							
	Tubewell + protected well / All wells					Tubewell + protected well / All wells	50%	65%							
	Protected wells / Traditional wells					Protected wells / Traditional wells	46%	35%							
	Tubewell / All wells					Tubewell / All wells	8%	47%							
	Protected springs / All springs					Protected springs / All springs	#DIV/0!	100%							
	Protect. well & spring / well & spring					Protect. well & spring / well & spring	50%	65%							
Number of people covered by the survey:		408.1	691		Number of people covered by the survey:										
Number of households covered by the survey:					Number of households covered by the survey:										
Total population:					Total population:										
<b>Comments</b>					<b>Comments</b>										



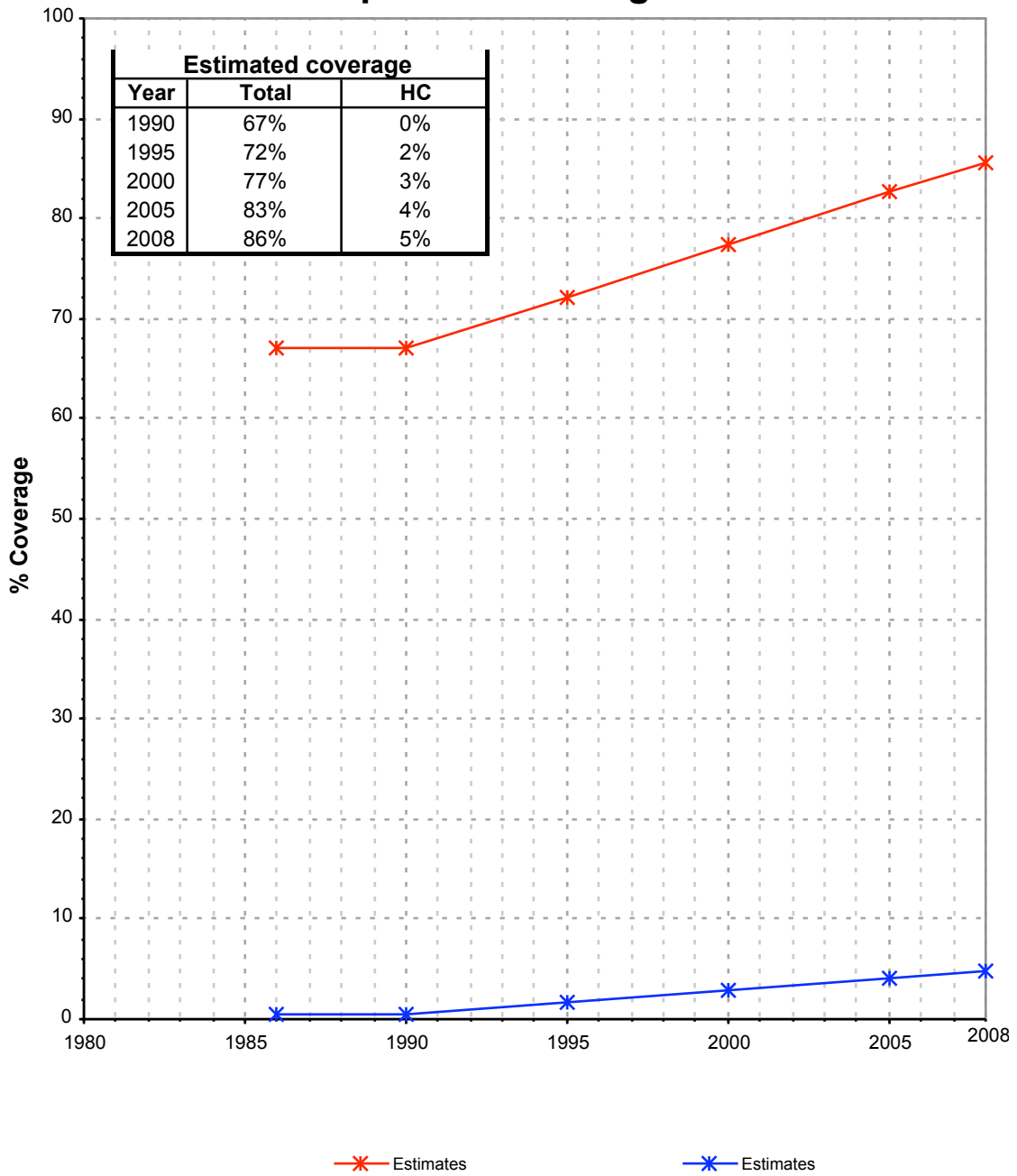


Gambia			DRINKING WATER							
			URBAN				RURAL			
			House connection		Total		House connection		Total	
Source	Code	Year	Used	Not used	Used	Not used	Used	Not used	Used	Not used
Global Water Supply and Sanitation Assessment 2000.	JMP99	1999		75.0		80.0		0.0		52.5
Multiple Indicator Cluster Survey	MICS00	2000	39.3		94.5		2.5		77.2	
Multiple Indicator Cluster Survey	MICS06	2006	51.4		91.2		4.6		81.3	
Priority survey	PS92	1992	25.5		83.2		1.3		63.9	
Priority survey	PS94	1994	33.5		87.0		1.3		74.3	
Priority survey	PS98	1998	40.0		94.1		1.9		79.9	

## Gambia - urban - Use of improved drinking water sources



# Gambia - rural - Use of improved drinking water sources



# Drinking Water

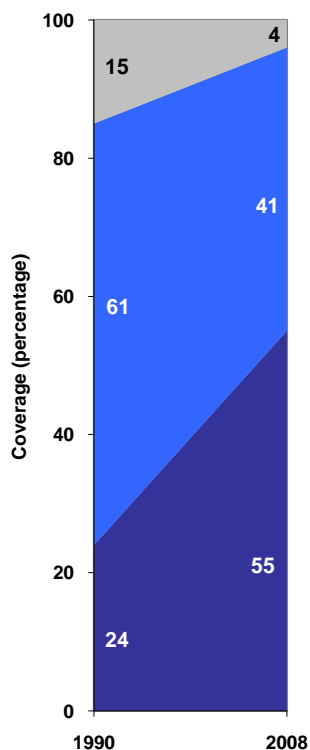
Gambia	Drinking water coverage estimates					
	Urban (%)		Rural (%)		Total (%)	
	1990	2008	1990	2008	1990	2008
Piped into premises	24	55	0	5	9	33
Other improved source	61	41	67	81	65	59
Unimproved source	15	4	33	14	26	8

Source: WHO/UNICEF JMP, 2010

Gambia	Urban		Rural		Total	
	1990	2008	1990	2008	1990	2008
Population (x1000)	343	938	552	722	896	1660

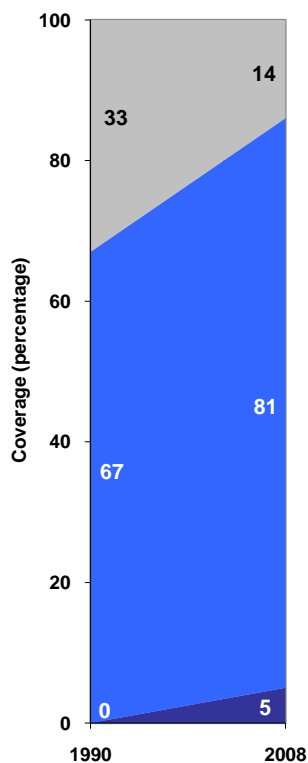
Source: UN / Population Division, 2008

Urban drinking water trends



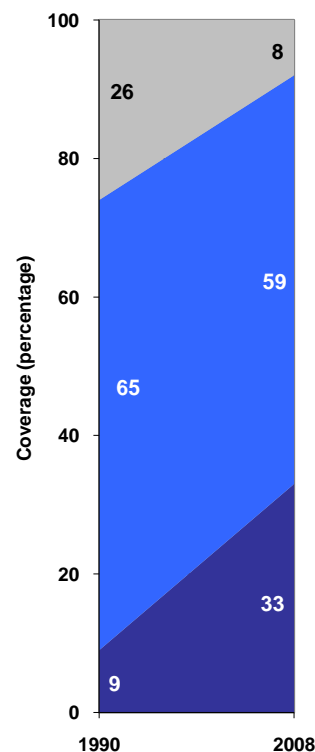
■ Unimproved sources  
■ Other improved sources  
■ Piped onto premises

Rural drinking water trends



■ Unimproved sources  
■ Other improved sources  
■ Piped onto premises

Total drinking water trends



■ Unimproved sources  
■ Other improved sources  
■ Piped onto premises