

WHO / UNICEF

Joint Monitoring Programme
for Water Supply and Sanitation

Estimates for the use of

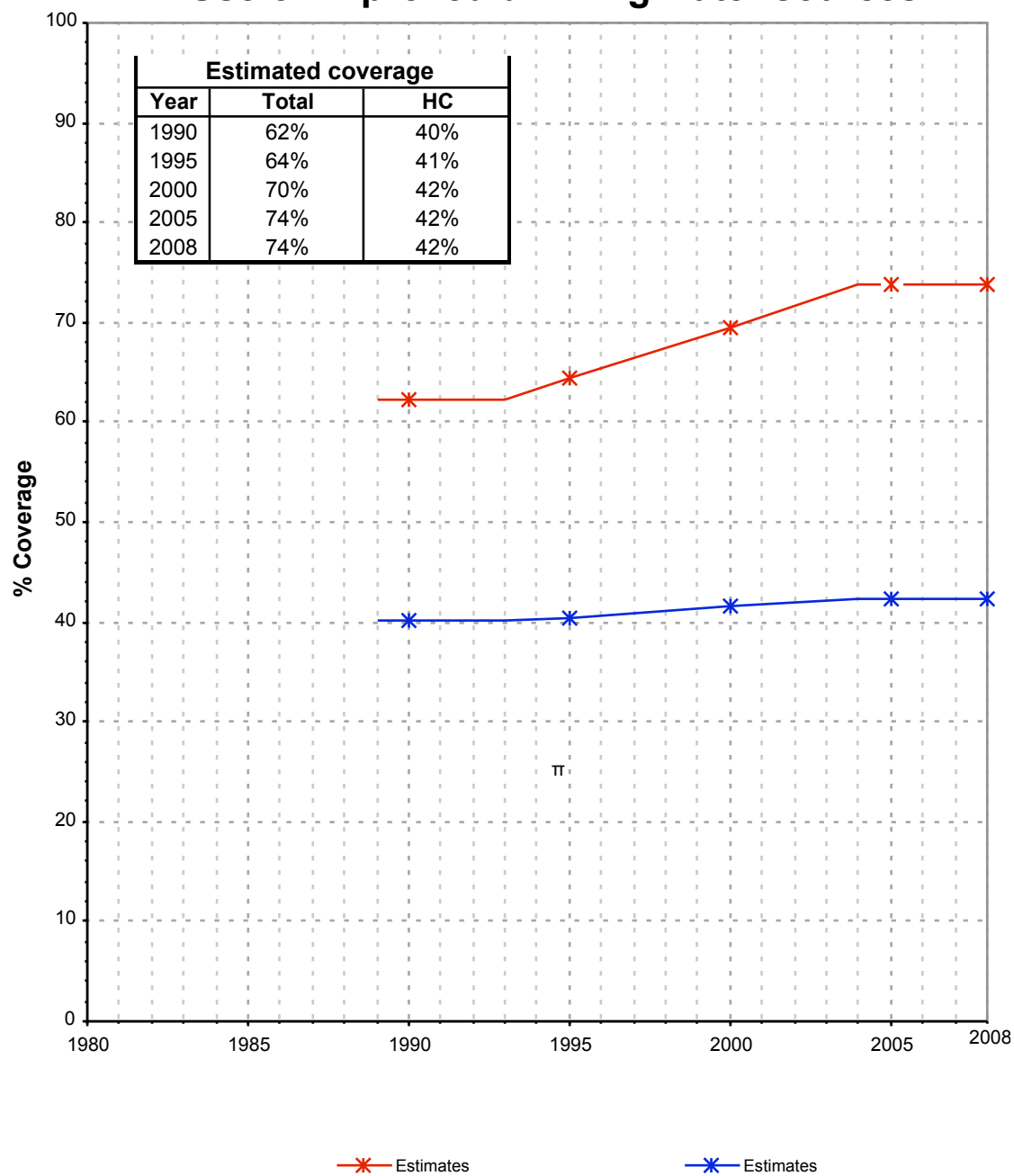
**Improved Drinking-Water Sources
and Improved Sanitation Facilities**

Updated March 2010

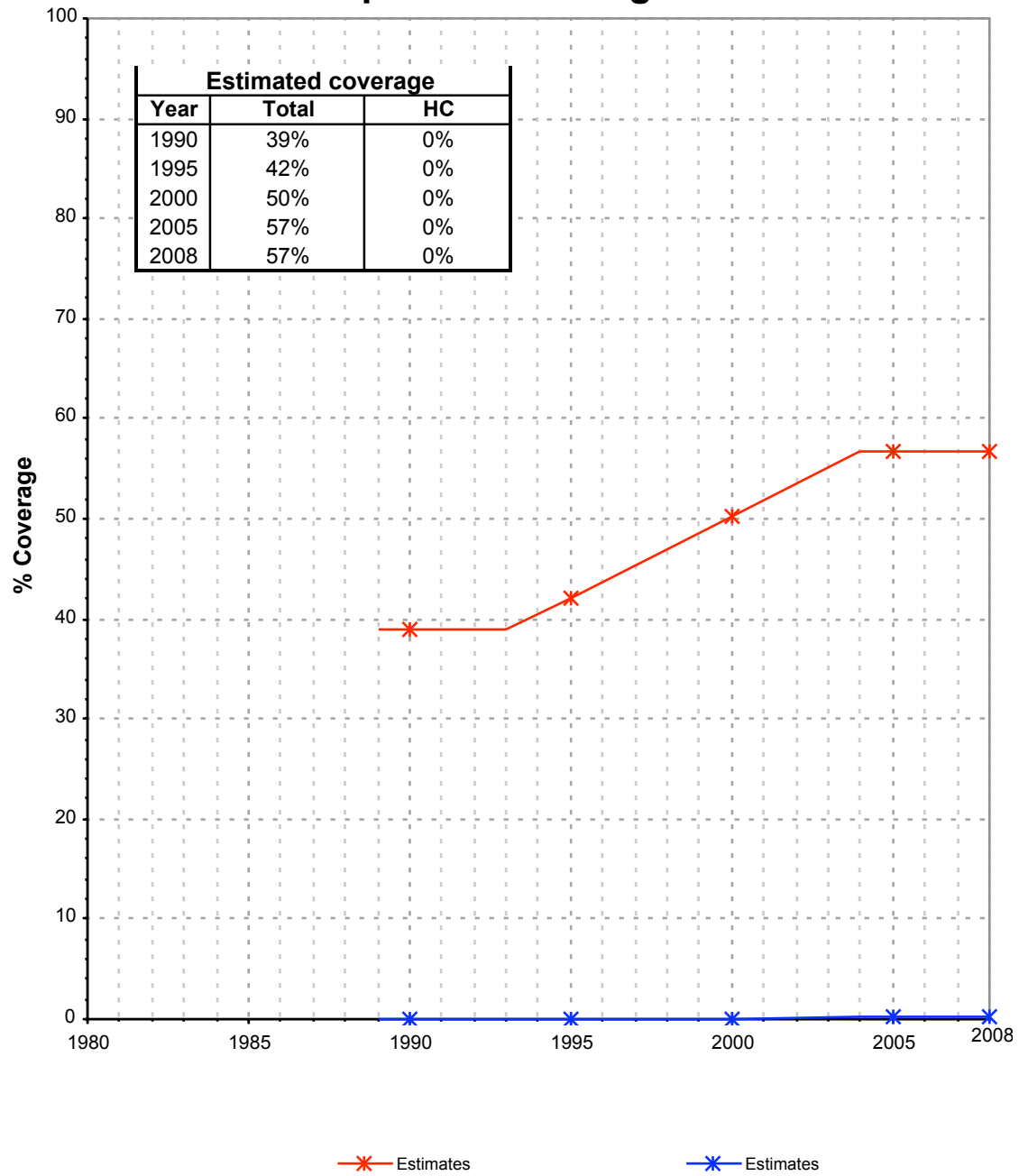
childinfo.org

Eritrea			DRINKING WATER							
			URBAN				RURAL			
			House connection		Total		House connection		Total	
Source	Code	Year	Used	Not used	Used	Not used	Used	Not used	Used	Not used
Demographic and Health Survey	DHS95	1995	40.5		64.4		0.0		42.2	
Global Water Supply and Sanitation Assessment 2000.	JMP99	1999				63.0				42.0
Demographic and Health Survey	DHS02	2002	41.9		71.7		0.1		53.5	

Eritrea - urban - Use of improved drinking water sources



Eritrea - rural - Use of improved drinking water sources



Drinking Water

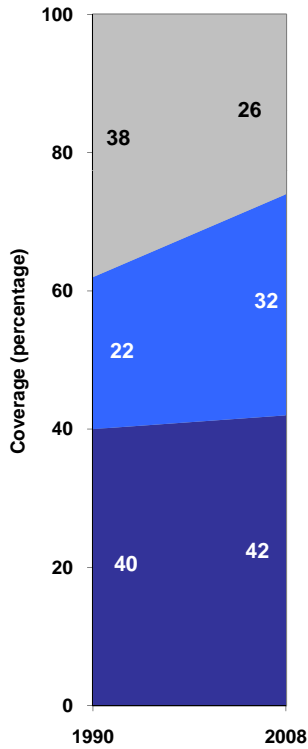
Eritrea	Drinking water coverage estimates					
	Urban (%)		Rural (%)		Total (%)	
	1990	2008	1990	2008	1990	2008
Piped into premises	40	42	0	0	6	9
Other improved source	22	32	39	57	37	52
Unimproved source	38	26	61	43	57	39

Source: WHO/UNICEF JMP, 2010

Eritrea	Urban		Rural		Total	
	1990	2008	1990	2008	1990	2008
Population (x1000)	499	1 017	2659	3910	3158	4927

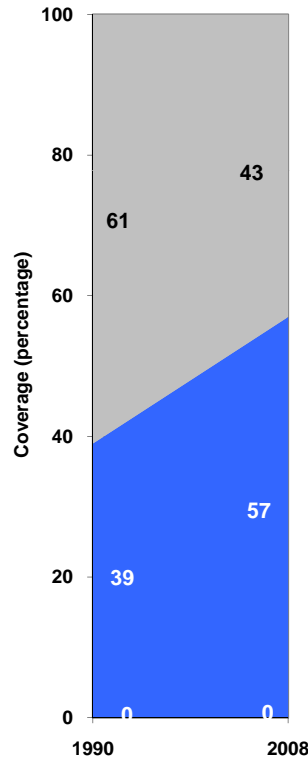
Source: UN / Population Division, 2008

Urban drinking water trends



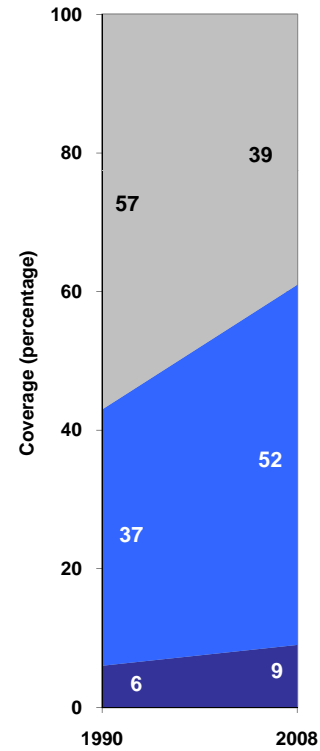
■ Unimproved sources
■ Other improved sources
■ Piped onto premises

Rural drinking water trends



■ Piped onto premises
■ Other improved sources
■ Unimproved sources

Total drinking water trends



■ Unimproved sources
■ Other improved sources
■ Piped onto premises