

WHO / UNICEF

Joint Monitoring Programme
for Water Supply and Sanitation

Estimates for the use of

**Improved Drinking-Water Sources
and Improved Sanitation Facilities**

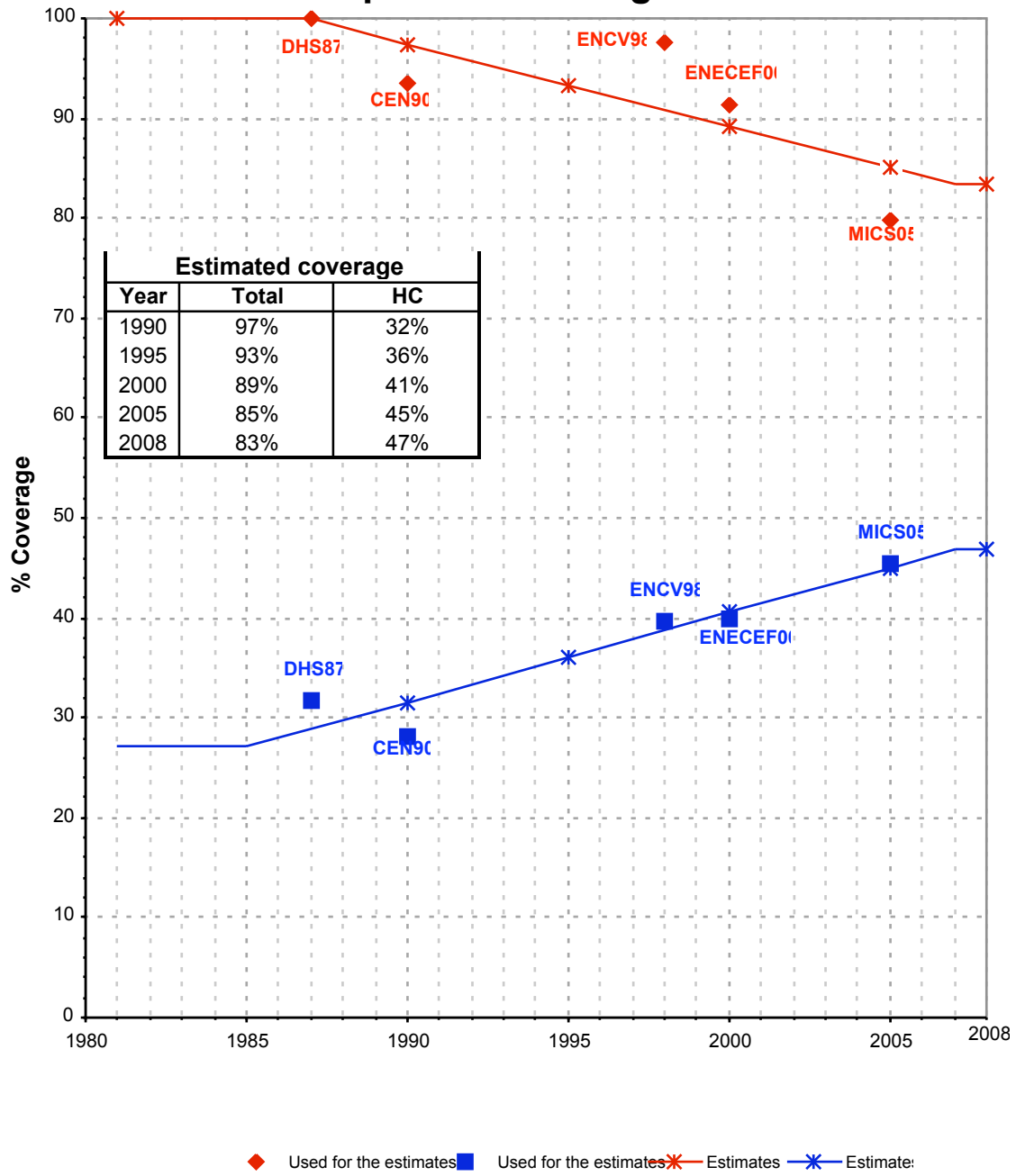
Updated March 2010

childinfo.org

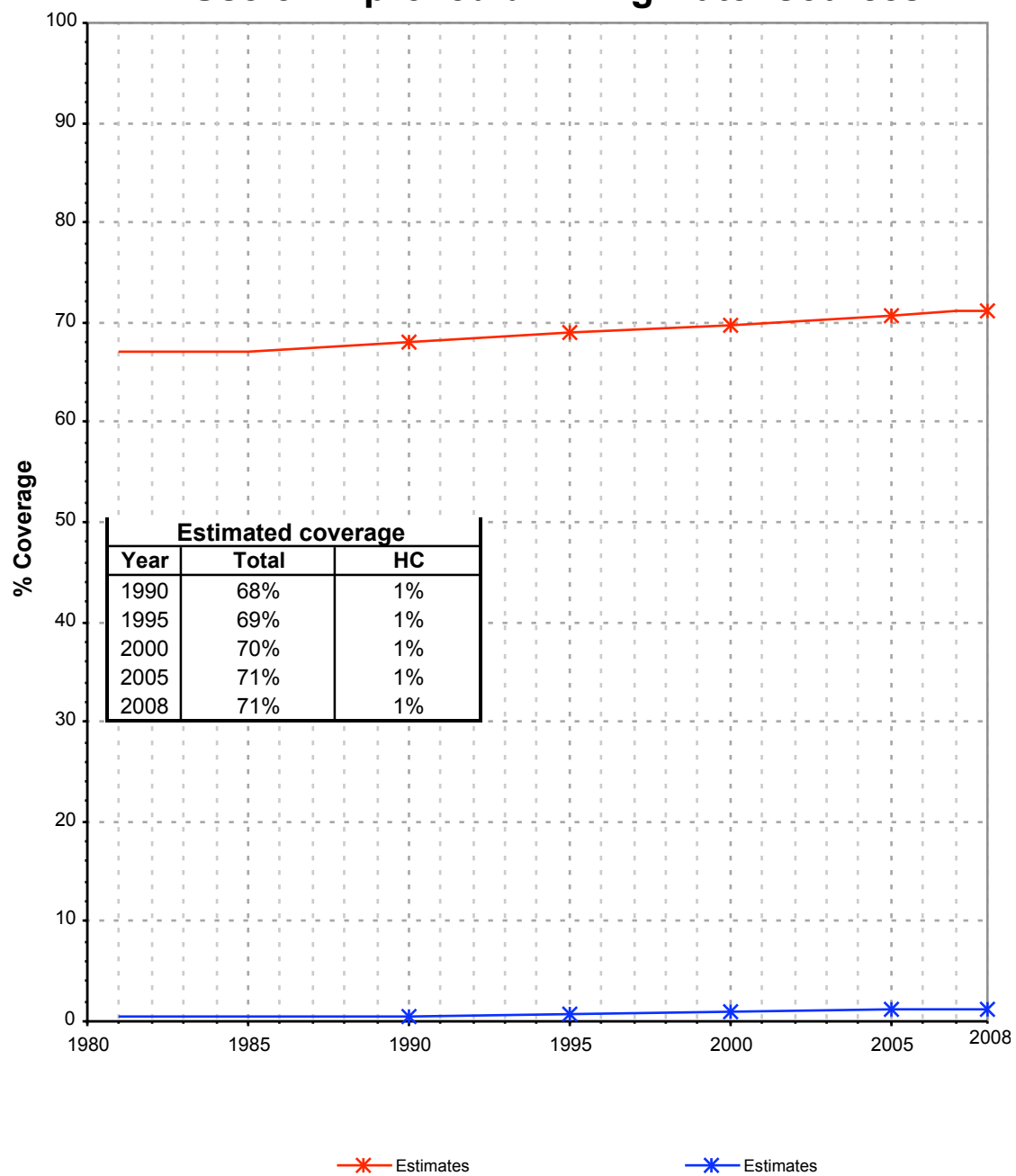
Access to drinking water sources		ENECEF00		Burundi		Access to drinking water sources		MICS05		Burundi	
Enquete Nationale d'Evaluation des Conditions de vie de l'enfant et de la Femme				Multiple Indicator Cluster Survey							
Rapport Preliminaire				2000				2005			
Original denomination	Classification	Urban	Rural	Total	Original denomination	Classification	Urban	Rural	Total		
	Tap water	82.0	12.6			Tap water	69.6	9.5			
	House connections	39.8	0.5			House connections	45.5	1.7			
Eau de robinet dans le logement	Piped water into dwelling	19.4	0.1		Eau de robinet dans le logement	Piped water into dwelling	17.9	0.4			
Eau de robinet dans la parcelle	Piped water to yard/plot	20.4	0.4		Dans la cour/parcelle	Piped water to yard/plot	27.6	1.3			
Borne fontaine	Public tap, standpipe	42.2	12.1		Robinet public/borne fontaine	Public tap, standpipe	24.1	7.8			
	Other					Other					
	Ground water	10.8	76.6			Ground water	13.6	72.0			
	Protected ground water	9.4	65.3			Protected ground water	10.2	53.9			
	Unprotected ground water	1.4	11.3			Unprotected ground water	3.4	18.1			
	Protected wells or springs	9.4	65.3			Protected wells or springs	10.2	53.9			
	Private					Private					
	Public					Public					
	Other					Other					
	Unprotected wells or springs	1.4	11.3			Unprotected wells or springs	3.4	18.1			
	Private					Private					
	Public					Public					
	Other					Other					
	All wells	0.4	6.1			All wells	0.1	3.0			
	Private					Private					
	Public					Public					
	Other					Other					
Puits a pompe	Tubewell, borehole	0.0	1.7			Tubewell, borehole					
	Private					Private					
	Public					Public					
	Other					Other					
	Traditional wells	0.4	4.4			Traditional wells	0.1	3.0			
	Private					Private					
	Public					Public					
	Other					Other					
Puits protégé	Protected well	0.4	1.7		Puits protege	Protected well	0.1	0.9			
	Private					Private					
	Public					Public					
	Other					Other					
Puit non protégé	Unprotected well	0.0	2.7		Puits non protege	Unprotected well	0.0	2.1			
	Private					Private					
	Public					Public					
	Other					Other					
	All springs	10.4	70.5			All springs	13.5	69.0			
	Private					Private					
	Public					Public					
	Other					Other					
Source amenee	Protected spring	9.0	61.9		Source protegee	Protected spring	10.1	53.0			
	Private					Private					
	Public					Public					
	Other					Other					
Source non protégé	Unprotected spring	1.4	8.6		Source non protegee	Unprotected spring	3.4	16.0			
	Private					Private					
	Public					Public					
	Other					Other					
	Rainwater	0.0	0.0			Rainwater	0.0	0.0			
Eau de pluie	Covered cistern/tank	0.0	0.0		Eau de pluie	Covered cistern/tank	0.0	0.0			
	Uncovered cistern/tank					Uncovered cistern/tank					
	Bottled water					Bottled water	0.0	0.0			
	with other improved					with other improved					
	without other improved				Eau en bouteille	without other improved	0.0	0.0			
Mare, riviere, lac	Surface water	3.8	10.6		Eau de surface	Surface water	9.0	17.8			
	River					River					
	Lake					Lake					
	Dam					Dam					
	Pond					Pond					
	Stream					Stream					
	Irrigation channel					Irrigation channel					
	Other					Other					
	Other improved sources					Other improved sources					
	Other					Other					
	Other					Other					
	Other non-improved	2.5	0.1			Other non-improved	7.8	0.6			
	Cart with small tank/drum					Cart with small tank/drum					
Camion citerne	Tanker truck provided	0.5	0.0		Camion citerne	Tanker truck provided	0.1	0.0			
Autre	Other	2.0	0.1		Autre	Other	7.7	0.6			
	Other					Other					
Ne sait pas	DK/missing	0.9	0.1		Manquant	DK/missing	0.0	0.1			
	Total	100.0	100.0			Total	100.0	100.0			
Calculations					Calculations						
Estimations					Estimations						
Access to improved drinking water sources :		91%	78%		Access to improved drinking water sources :		80%	63%			
Access to house connections :		40%	1%		Access to house connections :		46%	2%			
Used for the estimates		Yes	Yes		Used for the estimates		Yes	Yes			
Used for the estimates		Yes	Yes		Used for the estimates		Yes	Yes			
Ratios	HC / Tap water	49%	4%		Ratios	HC / Tap water	65%	18%			
	Public tap / Tap water	51%	96%			Public tap / Tap water	35%	82%			
	Tubewell + protected well / All wells	100%	56%			Tubewell + protected well / All wells	100%	30%			
	Protected wells / Traditional wells	100%	39%			Protected wells / Traditional wells	100%	30%			
	Tubewell / All wells	0%	28%			Tubewell / All wells					
	Protected springs / All springs	87%	88%			Protected springs / All springs	75%	77%			
Number of people covered by the survey:					Number of people covered by the survey:						
Number of households covered by the survey:					Number of households covered by the survey:						
Total population:					Total population:						
Comments					Comments						

Burundi			DRINKING WATER							
			URBAN				RURAL			
			House connection		Total		House connection		Total	
Source	Code	Year	Used	Not used	Used	Not used	Used	Not used	Used	Not used
Demographic and Health Survey 1987.	DHS87	1987	31.6		100.0		0.3		69.0	
Census	CEN90	1990	28.0		93.5		1.1		61.2	
Etude Nationale sur les Conditions de Vie des Population	ENCV98	1998	39.7		97.7		0.5		73.8	
Global Water Supply and Sanitation Assessment 2000.	JMP99	1999		51.3		96.2		3.0		61.0
Enquete Nationale d'Evaluation des Conditions de vie de l'enfant et de la Femme	ENECEF00	2000	39.8		91.4		0.5		77.9	
Multiple Indicator Cluster Survey	MICS05	2005	45.5		79.8		1.7		63.4	

Burundi - urban - Use of improved drinking water sources



Burundi - rural - Use of improved drinking water sources



Drinking Water

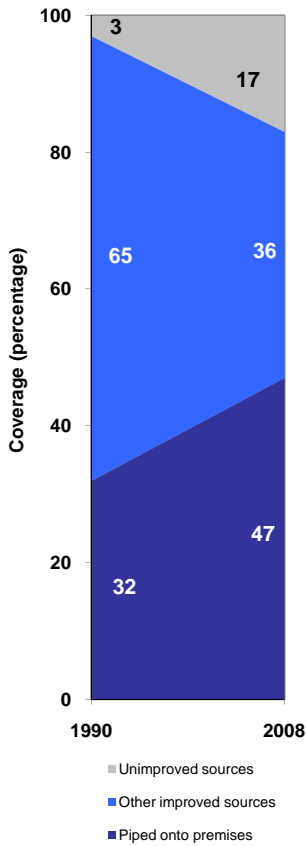
Burundi	Drinking water coverage estimates					
	Urban (%)		Rural (%)		Total (%)	
	1990	2008	1990	2008	1990	2008
Piped into premises	32	47	1	1	3	6
Other improved source	65	36	67	70	67	66
Unimproved source	3	17	32	29	30	28

Source: WHO/UNICEF JMP, 2010

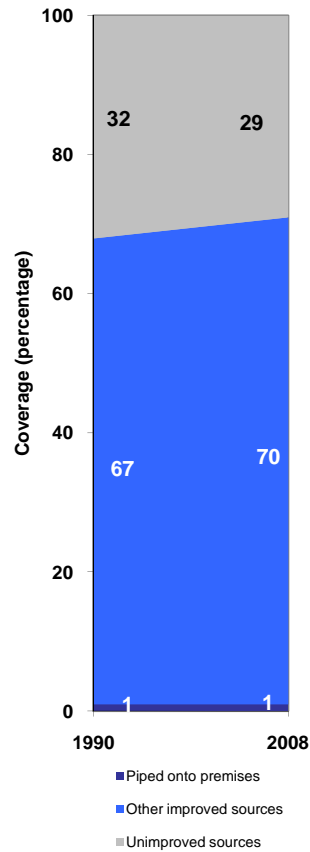
Burundi	Urban		Rural		Total	
	1990	2008	1990	2008	1990	2008
Population (x1000)	356	838	5325	7236	5681	8074

Source: UN / Population Division, 2008

Urban drinking water trends



Rural drinking water trends



Total drinking water trends

