

**WHO / UNICEF**

**Joint Monitoring Programme**  
for Water Supply and Sanitation

Estimates for the use of

**Improved Drinking-Water Sources  
and Improved Sanitation Facilities**

Updated March 2010

[childinfo.org](http://childinfo.org)



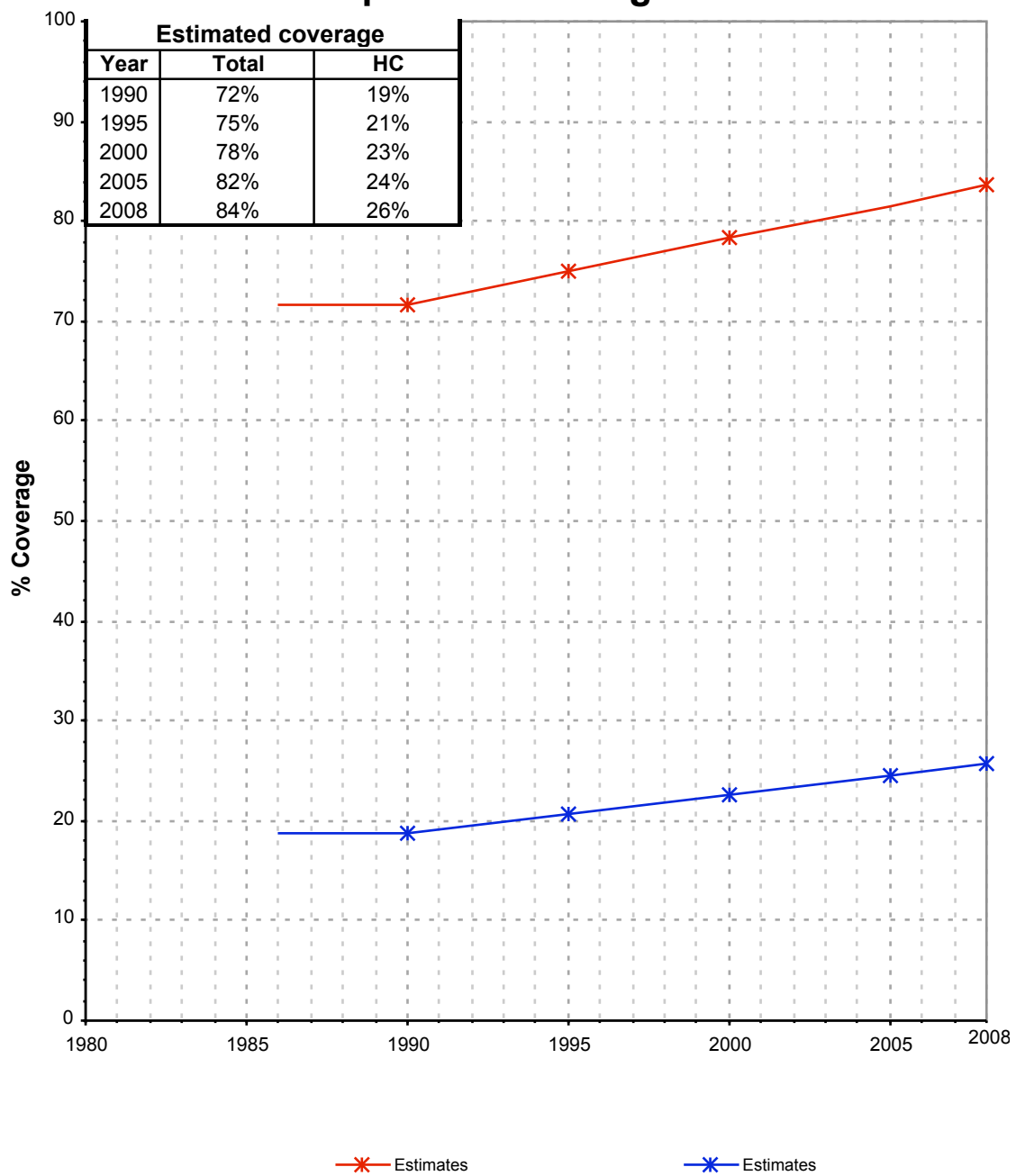




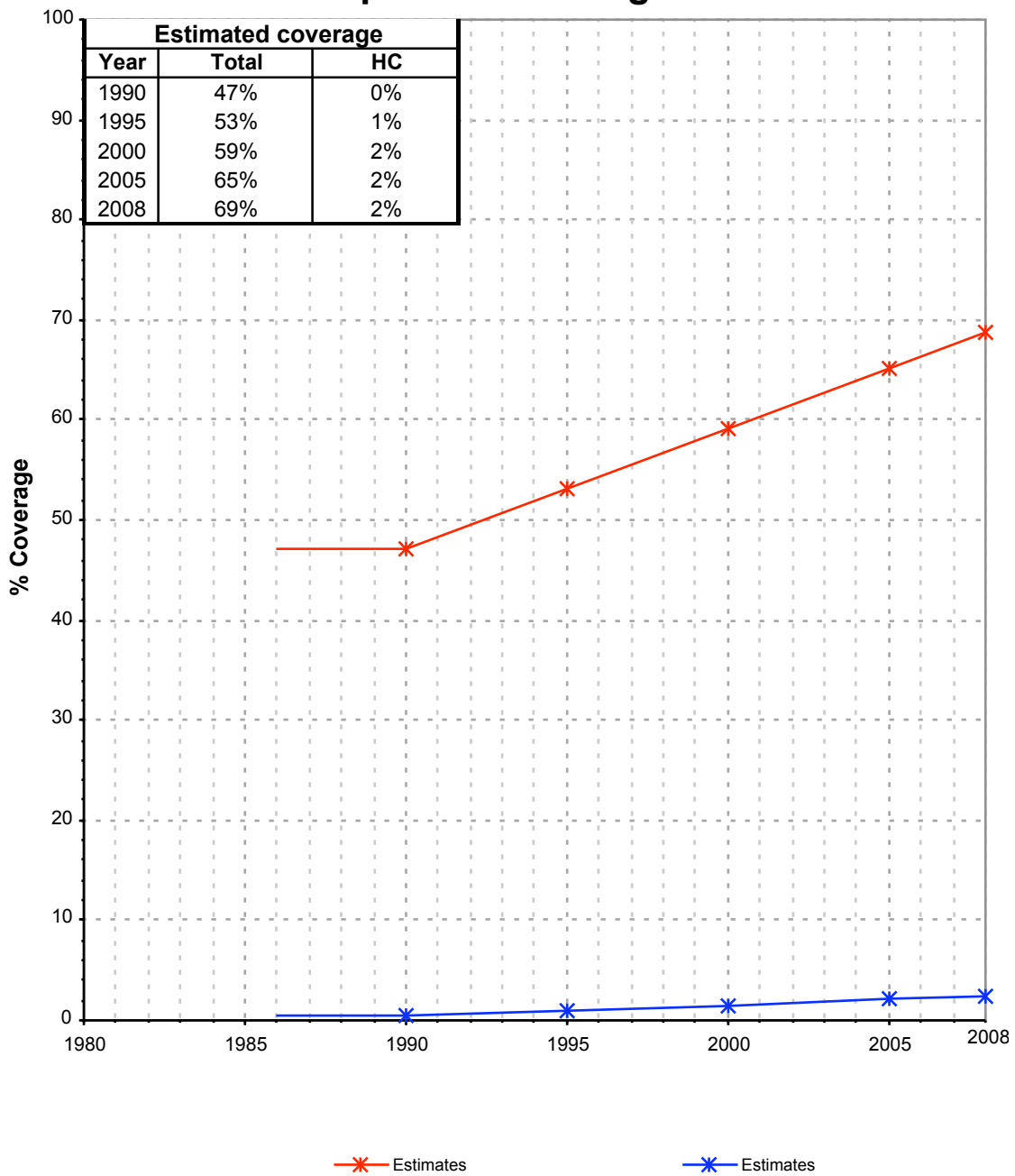


| Benin   |          |      | DRINKING WATER   |          |       |          |                  |          |       |          |
|---|----------|------|------------------|----------|-------|----------|------------------|----------|-------|----------|
|   |          |      | URBAN            |          |       |          | RURAL            |          |       |          |
|   |          |      | House connection |          | Total |          | House connection |          | Total |          |
| Source  | Code     | Year | Used             | Not used | Used  | Not used | Used             | Not used | Used  | Not used |
| Recensement   | CEN92    | 1992 | 20.2             |          | 74.5  |          | 1.0              |          | 47.7  |          |
| Enquête démographique et de santé   | DHS96    | 1996 | 18.6             |          | 74.0  |          | 0.5              |          | 56.6  |          |
| Evaluation 2000 de la situation mondiale de l'approvisionnement en eau et de l'assainissement.. | PCS99    | 1999 |                  | 48.6     |       | 48.6     |                  | 0.0      |       | 52.0     |
| Enquête démographique et de santé   | DHS01    | 2001 | 26.9             |          | 78.1  |          | 1.6              |          | 60.9  |          |
| Recensement   | CEN02    | 2002 | 21.6             |          | 76.1  |          | 1.4              |          | 54.3  |          |
| Questionnaire des indicateurs de base du bien-être  | QUIBB03  | 2003 | 22.1             |          | 84.6  |          | 1.7              |          | 66.7  |          |
| ENQUÊTE SOCIO-ANTHROPOLOGIQUE SUR LA FECONDITE ET LA MORTALITE INFANTILE ET MATERNELLE          | ESAFEM03 | 2003 | 25.8             |          | 80.1  |          | 3.0              |          | 67.7  |          |
| Enquête démographique et de santé   | DHS06    | 2006 | 23.8             |          | 82.4  |          | 1.8              |          | 63.3  |          |

## Benin - urban - Use of improved drinking water sources



## Benin - rural - Use of improved drinking water sources



# Drinking Water

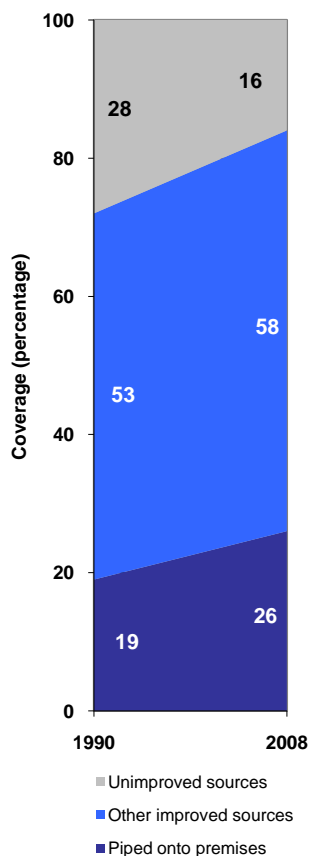
| Benin                 | Drinking water coverage estimates |      |           |      |           |      |
|-----------------------|-----------------------------------|------|-----------|------|-----------|------|
|                       | Urban (%)                         |      | Rural (%) |      | Total (%) |      |
|                       | 1990                              | 2008 | 1990      | 2008 | 1990      | 2008 |
| Piped into premises   | 19                                | 26   | 0         | 2    | 7         | 12   |
| Other improved source | 53                                | 58   | 47        | 67   | 49        | 63   |
| Unimproved source     | 28                                | 16   | 53        | 31   | 44        | 25   |

Source: WHO/UNICEF JMP, 2010

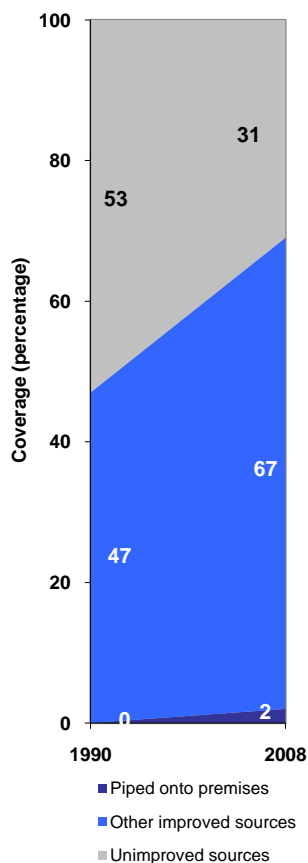
| Benin              | Urban |      | Rural |      | Total |      |
|--------------------|-------|------|-------|------|-------|------|
|                    | 1990  | 2008 | 1990  | 2008 | 1990  | 2008 |
| Population (x1000) | 1654  | 3568 | 3142  | 5094 | 4795  | 8662 |

Source: UN / Population Division, 2008

Urban drinking water trends



Rural drinking water trends



Total drinking water trends

