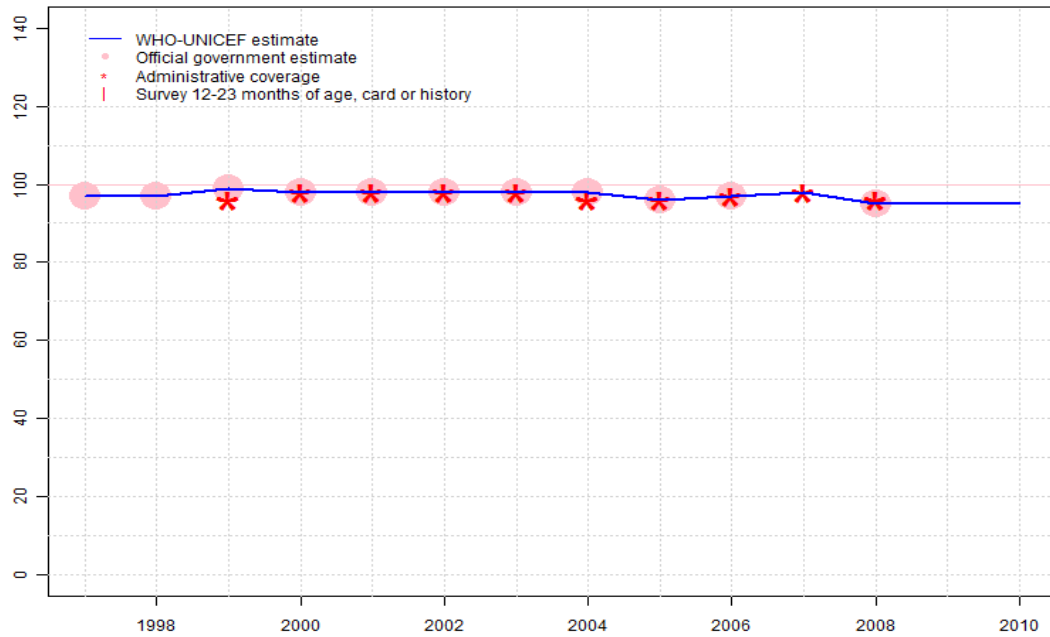


Ukraine - BCG

UKR - BCG



Description:

1997: Legacy estimate.

1998: Estimate based on reported data.

1999: Estimate based on reported data.

2000: Estimate based on reported data. Current estimate of 98 percent changed from previous revision value of 99 percent.

2001: Estimate based on reported data.

2002: Estimate based on reported data.

2003: Estimate based on reported data.

2004: Estimate based on reported data.

2005: Estimate based on reported data.

2006: Estimate based on reported data.

2007: Estimate based on reported data.

2008: Estimate based on reported data.

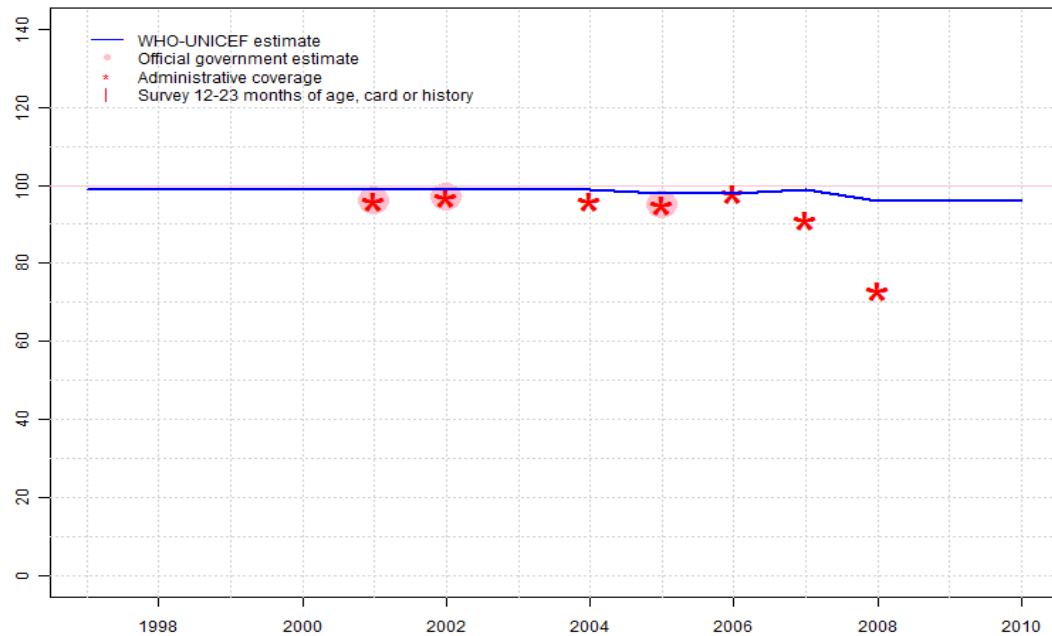
2009: Estimate based on extrapolation from 2008 value of 95 percent.

2010: Estimate based on extrapolation from 2008 value of 95 percent.

	1997	1998	1999	2000	2001	2002	2003	2004	2005	2006	2007	2008	2009	2010
Estimate	97	97	99	98	98	98	98	98	96	97	98	95	95	95
Official	97	97	99	98	98	98	98	98	96	97	NA	95	NA	NA
Administrative	NA	NA	96	98	98	98	98	96	96	97	98	96	NA	NA
Survey	NA	NA	NA	NA	NA	NA	NA	NA	NA	NA	NA	NA	NA	NA

Ukraine - DTP1

UKR - DTP1



Description:

1997: Legacy estimate.

1998: No DTP1 data. Estimate based on DTP3 coverage of 98.

1999: No DTP1 data. Estimate based on DTP3 coverage of 99.

2000: No DTP1 data. Estimate based on DTP3 coverage of 99.

2001: DTP1 coverage estimated based on DTP3 coverage of 99.

2002: DTP1 coverage estimated based on DTP3 coverage of 100.

2003: No DTP1 data. Estimate based on DTP3 coverage of 97.

2004: DTP1 coverage estimated based on DTP3 coverage of 99.

2005: DTP1 coverage estimated based on DTP3 coverage of 96.

2006: Estimate based on reported data. Current estimate of 98 percent changed from previous revision value of 99 percent.

2007: DTP1 coverage estimated based on DTP3 coverage of 98. Current estimate of 99 percent changed from previous revision value of 98 percent.

2008: No DTP1 data. Estimate based on DTP3 coverage of 90. Reported data not accepted due to a change from 91 level to 73 percent. Current estimate of 96 percent changed from previous revision value of 94 percent.

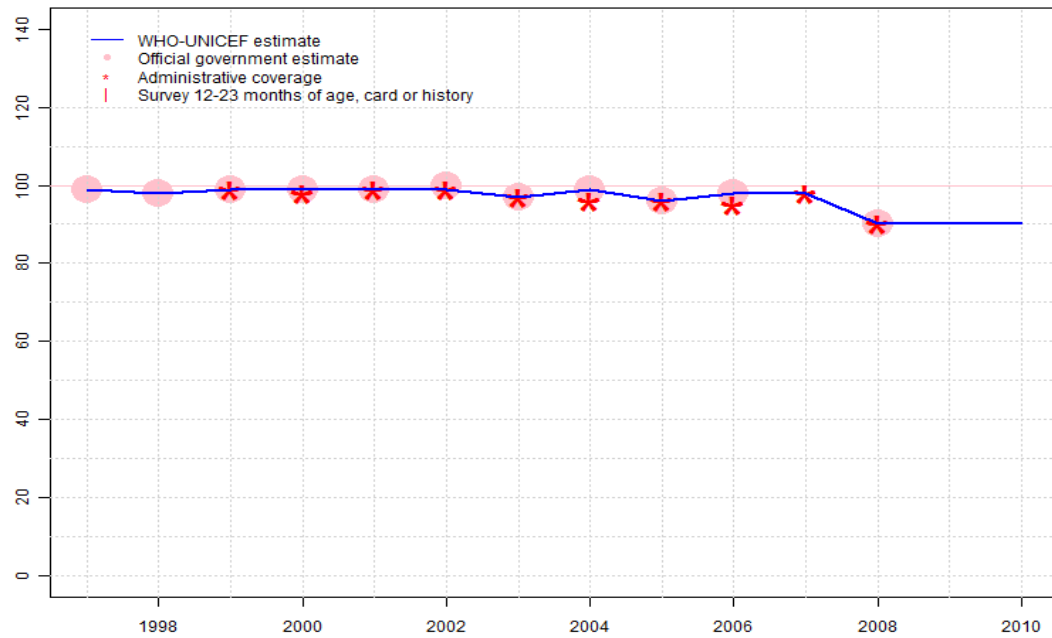
2009: Estimate based on extrapolation from 2008 value of 96 percent. Current estimate of 96 percent changed from previous revision value of 94 percent.

2010: Estimate based on extrapolation from 2008 value of 96 percent.

	1997	1998	1999	2000	2001	2002	2003	2004	2005	2006	2007	2008	2009	2010
Estimate	99	99	99	99	99	99	99	99	98	98	99	96	96	96
Official	NA	NA	NA	NA	96	97	NA	NA	95	NA	NA	NA	NA	NA
Administrative	NA	NA	NA	NA	96	97	NA	96	95	98	91	73	NA	NA
Survey	NA	NA	NA	NA	NA	NA	NA	NA	NA	NA	NA	NA	NA	NA

Ukraine - DTP3

UKR - DTP3



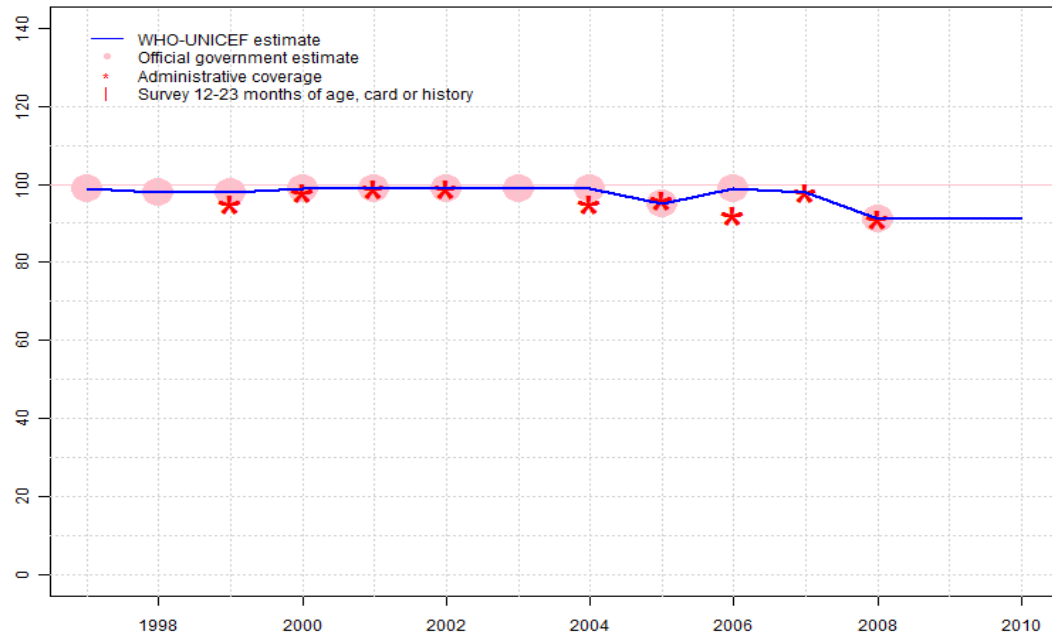
Description:

- 1997: Legacy estimate.
- 1998: Estimate based on reported data.
- 1999: Estimate based on reported data.
- 2000: Estimate based on reported data.
- 2001: Estimate based on reported data.
- 2002: Estimate based on reported data.
- 2003: Estimate based on reported data.
- 2004: Estimate based on reported data.
- 2005: Estimate based on reported data.
- 2006: Estimate based on reported data.
- 2007: Estimate based on reported data.
- 2008: Estimate based on reported data.
- 2009: Estimate based on extrapolation from 2008 value of 90 percent.
- 2010: Estimate based on extrapolation from 2008 value of 90 percent.

	1997	1998	1999	2000	2001	2002	2003	2004	2005	2006	2007	2008	2009	2010
Estimate	99	98	99	99	99	99	97	99	96	98	98	90	90	90
Official	99	98	99	99	99	100	97	99	96	98	NA	90	NA	NA
Administrative	NA	NA	99	98	99	99	97	96	96	95	98	90	NA	NA
Survey	NA	NA	NA	NA	NA	NA	NA	NA	NA	NA	NA	NA	NA	NA

Ukraine - Pol3

UKR - Pol3



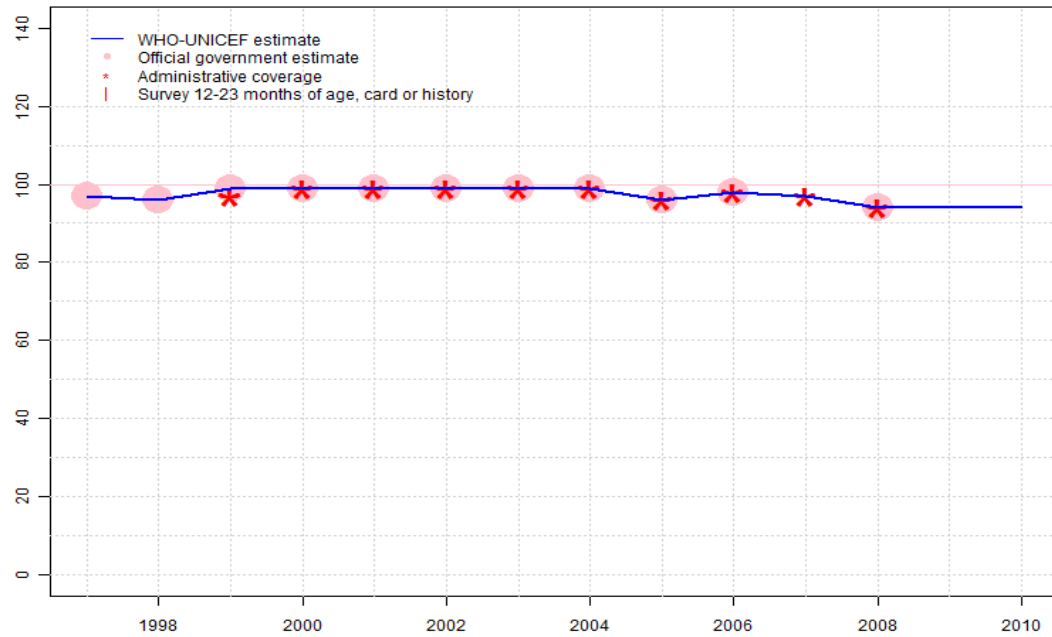
Description:

- 1997: Legacy estimate.
- 1998: Estimate based on reported data.
- 1999: Estimate based on reported data.
- 2000: Estimate based on reported data.
- 2001: Estimate based on reported data.
- 2002: Estimate based on reported data.
- 2003: Estimate based on reported data.
- 2004: Estimate based on reported data.
- 2005: Estimate based on reported data.
- 2006: Estimate based on reported data.
- 2007: Estimate based on reported data.
- 2008: Estimate based on reported data.
- 2009: Estimate based on extrapolation from 2008 value of 91 percent.
- 2010: Estimate based on extrapolation from 2008 value of 91 percent.

	1997	1998	1999	2000	2001	2002	2003	2004	2005	2006	2007	2008	2009	2010
Estimate	99	98	98	99	99	99	99	99	95	99	98	91	91	91
Official	99	98	98	99	99	99	99	99	95	99	NA	91	NA	NA
Administrative	NA	NA	95	98	99	99	NA	95	96	92	98	91	NA	NA
Survey	NA	NA	NA	NA	NA	NA	NA	NA	NA	NA	NA	NA	NA	NA

Ukraine - MCV

UKR - MCV



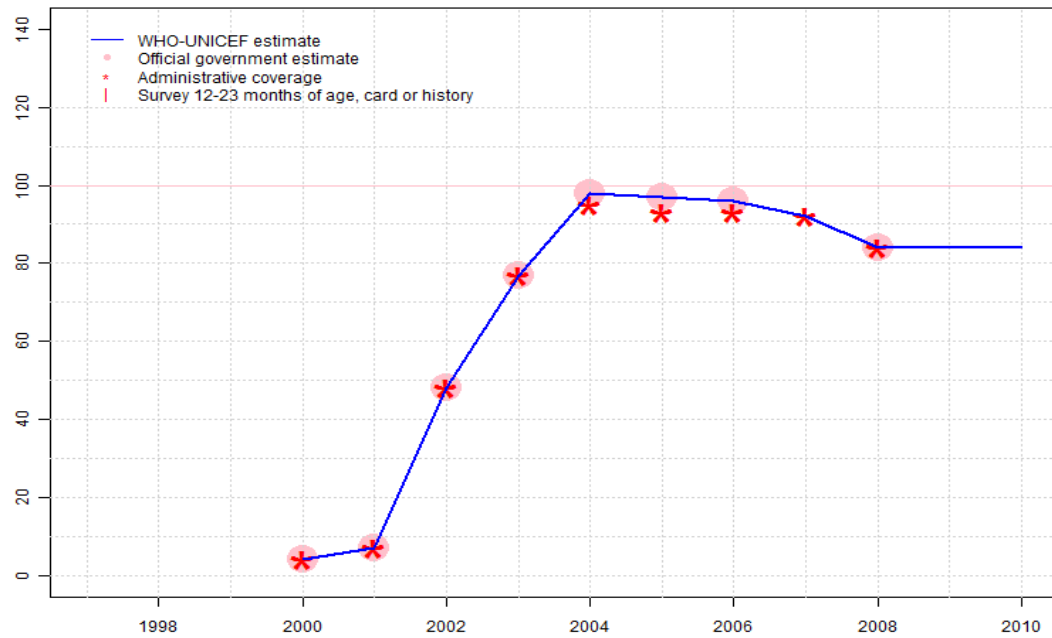
Description:

- 1997: Legacy estimate.
- 1998: Estimate based on reported data.
- 1999: Estimate based on reported data.
- 2000: Estimate based on reported data.
- 2001: Estimate based on reported data.
- 2002: Estimate based on reported data.
- 2003: Estimate based on reported data.
- 2004: Estimate based on reported data.
- 2005: Estimate based on reported data.
- 2006: Estimate based on reported data.
- 2007: Estimate based on reported data.
- 2008: Estimate based on reported data.
- 2009: Estimate based on extrapolation from 2008 value of 94 percent.
- 2010: Estimate based on extrapolation from 2008 value of 94 percent.

	1997	1998	1999	2000	2001	2002	2003	2004	2005	2006	2007	2008	2009	2010
Estimate	97	96	99	99	99	99	99	99	96	98	97	94	94	94
Official	97	96	99	99	99	99	99	99	96	98	NA	94	NA	NA
Administrative	NA	NA	97	99	99	99	99	99	96	98	97	94	NA	NA
Survey	NA	NA	NA	NA	NA	NA	NA	NA	NA	NA	NA	NA	NA	NA

Ukraine - HepB3

UKR - HepB3



Description:

2000: Estimate based on reported data. HepB partially introduced in 2001 nationally in 2003 reporting started in 2000. Vaccine presentation is HepB

2001: Estimate based on reported data.

2002: Estimate based on reported data.

2003: Estimate based on reported data.

2004: Estimate based on reported data.

2005: Estimate based on reported data.

2006: Estimate based on reported data.

2007: Estimate based on reported data.

2008: Estimate based on reported data.

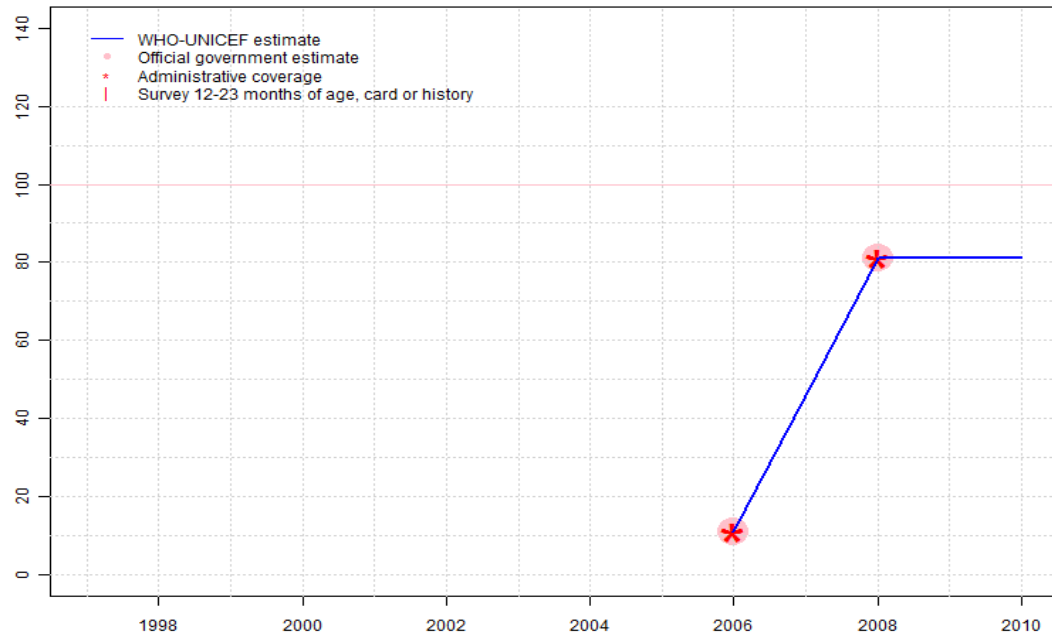
2009: Estimate based on extrapolation from 2008 value of 84 percent.

2010: Estimate based on extrapolation from 2008 value of 84 percent.

	1997	1998	1999	2000	2001	2002	2003	2004	2005	2006	2007	2008	2009	2010
Estimate	NA	NA	NA	4	7	48	77	98	97	96	92	84	84	84
Official	NA	NA	NA	4	7	48	77	98	97	96	NA	84	NA	NA
Administrative	NA	NA	NA	4	7	48	77	95	93	93	92	84	NA	NA
Survey	NA	NA	NA	NA	NA	NA	NA	NA	NA	NA	NA	NA	NA	NA

Ukraine - Hib3

UKR - Hib3

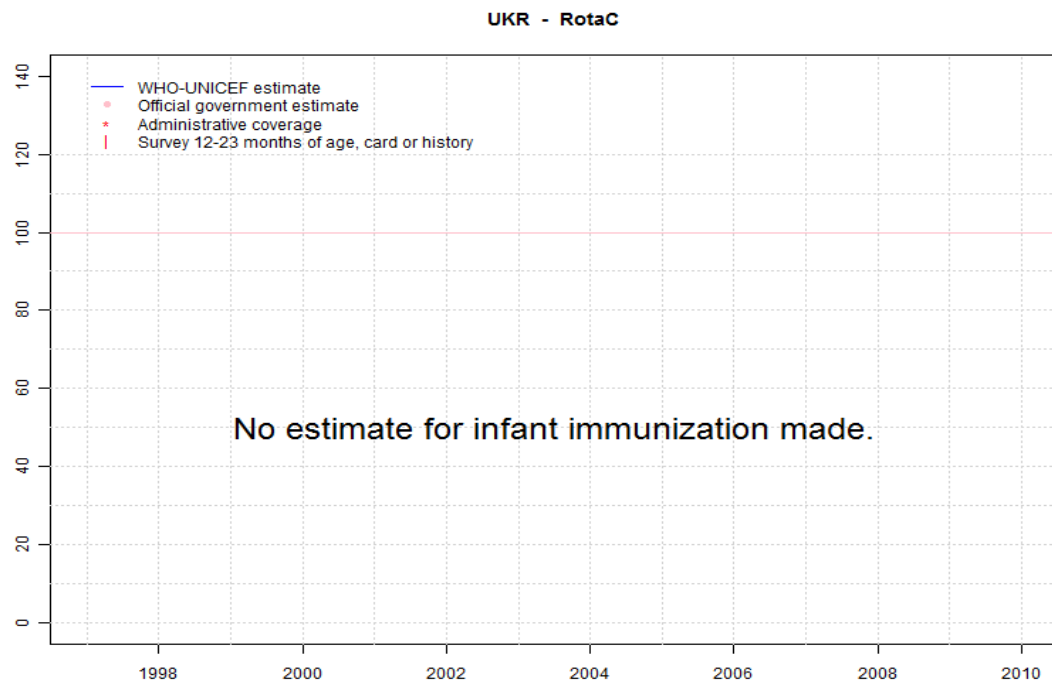


Description:

- 2006: Estimate based on reported data. Hib introduced in 2006
- 2007: Estimate based on interpolation between 2006 and 2008.
- 2008: Estimate based on reported data.
- 2009: Estimate based on extrapolation from 2008 value of 81 percent.
- 2010: Estimate based on extrapolation from 2008 value of 81 percent.

	1997	1998	1999	2000	2001	2002	2003	2004	2005	2006	2007	2008	2009	2010
Estimate	NA	NA	NA	NA	NA	NA	NA	NA	NA	11	46	81	81	81
Official	NA	NA	NA	NA	NA	NA	NA	NA	NA	11	NA	81	NA	NA
Administrative	NA	NA	NA	NA	NA	NA	NA	NA	NA	11	NA	81	NA	NA
Survey	NA	NA	NA	NA	NA	NA	NA	NA	NA	NA	NA	NA	NA	NA

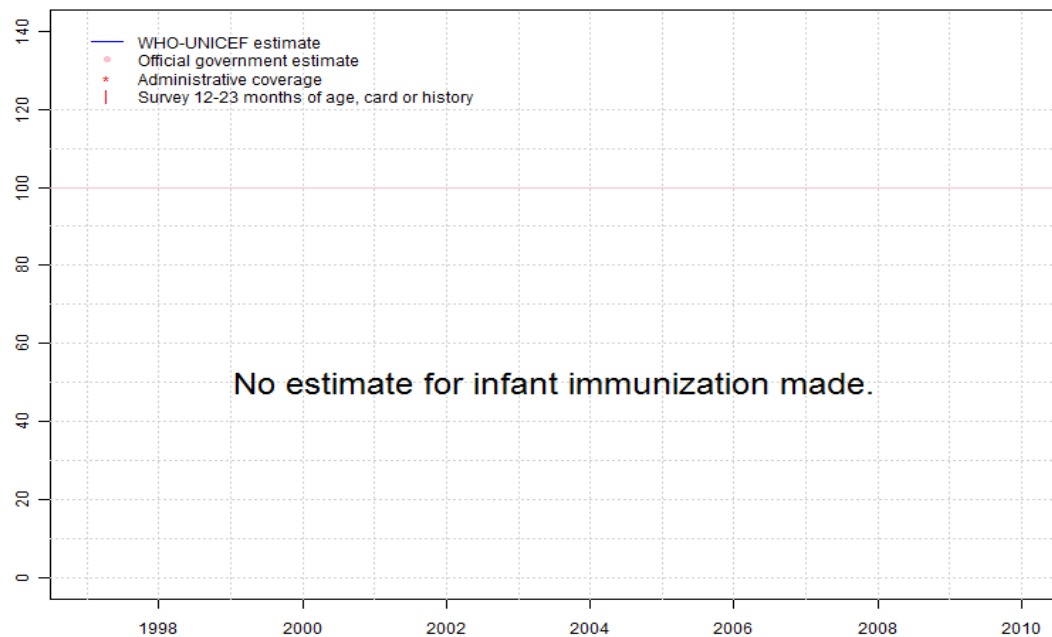
Ukraine - RotaC



	1997	1998	1999	2000	2001	2002	2003	2004	2005	2006	2007	2008	2009	2010
Estimate	NA	NA	NA	NA	NA	NA	NA	NA	NA	NA	NA	NA	NA	NA
Official	NA	NA	NA	NA	NA	NA	NA	NA	NA	NA	NA	NA	NA	NA
Administrative	NA	NA	NA	NA	NA	NA	NA	NA	NA	NA	NA	NA	NA	NA
Survey	NA	NA	NA	NA	NA	NA	NA	NA	NA	NA	NA	NA	NA	NA

Ukraine - PcV3

UKR - PcV3



	1997	1998	1999	2000	2001	2002	2003	2004	2005	2006	2007	2008	2009	2010
Estimate	NA	NA	NA	NA	NA	NA	NA	NA	NA	NA	NA	NA	NA	NA
Official	NA	NA	NA	NA	NA	NA	NA	NA	NA	NA	NA	NA	NA	NA
Administrative	NA	NA	NA	NA	NA	NA	NA	NA	NA	NA	NA	NA	NA	NA
Survey	NA	NA	NA	NA	NA	NA	NA	NA	NA	NA	NA	NA	NA	NA

Further information and estimates for 1980-1996 are available at:

http://www.childinfo.org/immunization_countryreports.html

http://www.who.int/immunization_monitoring/routine/immunization_coverage/en/index4.html