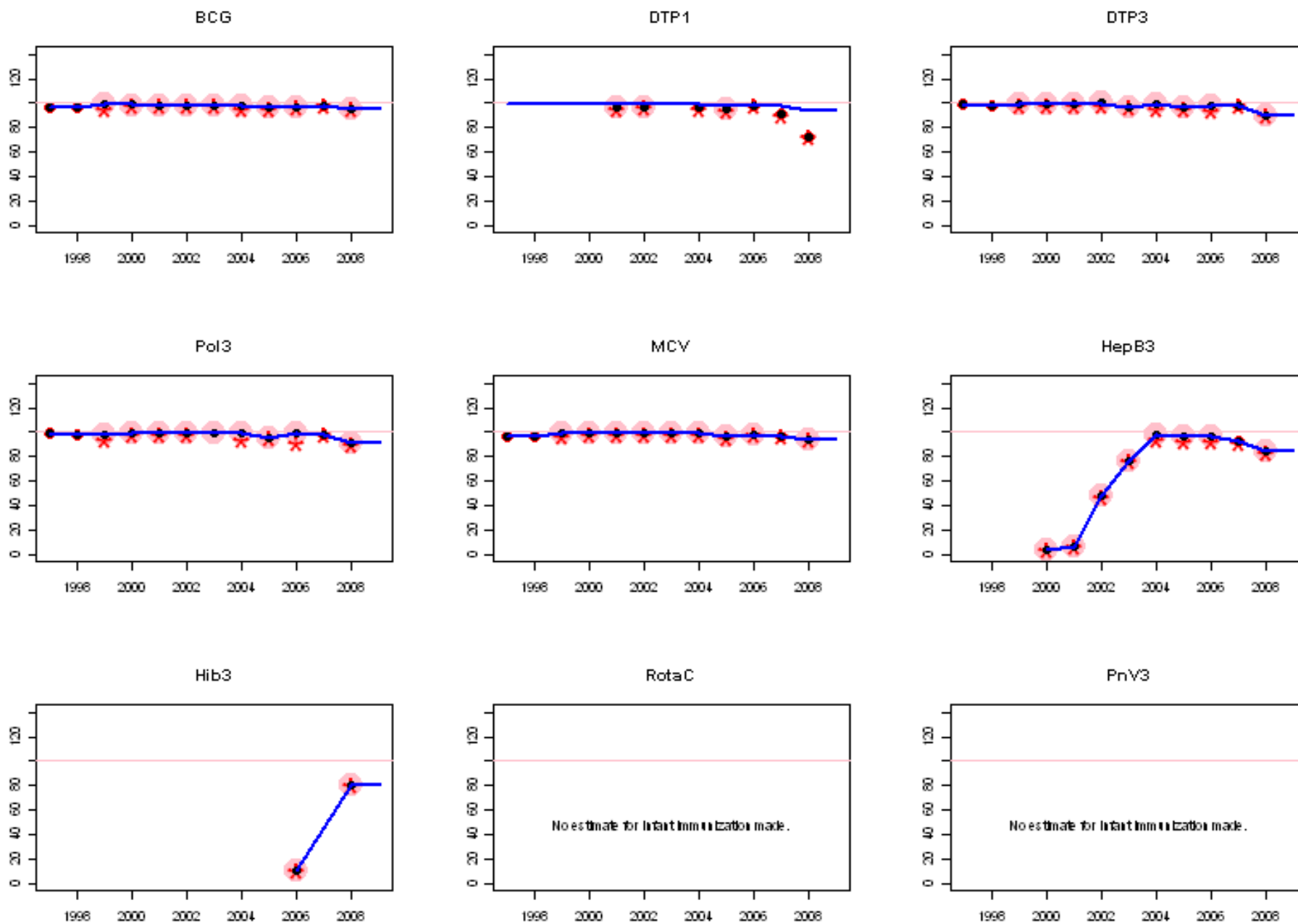
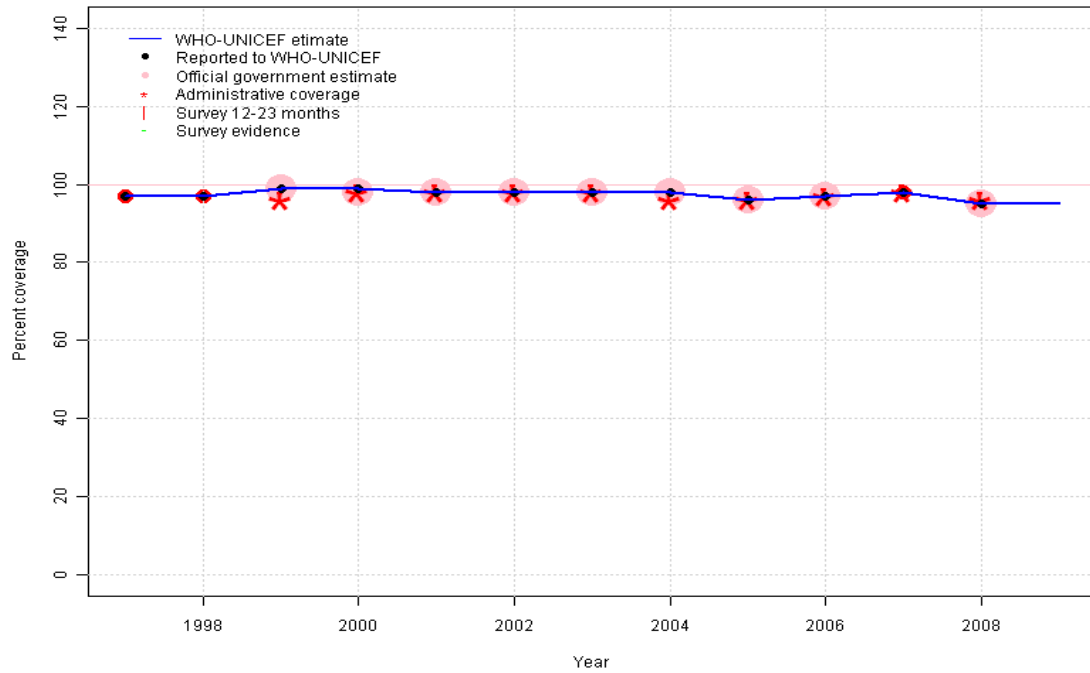


Ukraine: WHO and UNICEF estimates of immunization coverage, 1997 - 2009



Ukraine - BCG

UKR - BCG



Description:

1997: Legacy estimate.

1998: Estimate based on reported data.

1999: Estimate based on reported data.

2000: Estimate based on reported data.

2001: Estimate based on reported data.

2002: Estimate based on reported data.

2003: Estimate based on reported data.

2004: Estimate based on reported data.

2005: Estimate based on reported data.

2006: Estimate based on reported data.

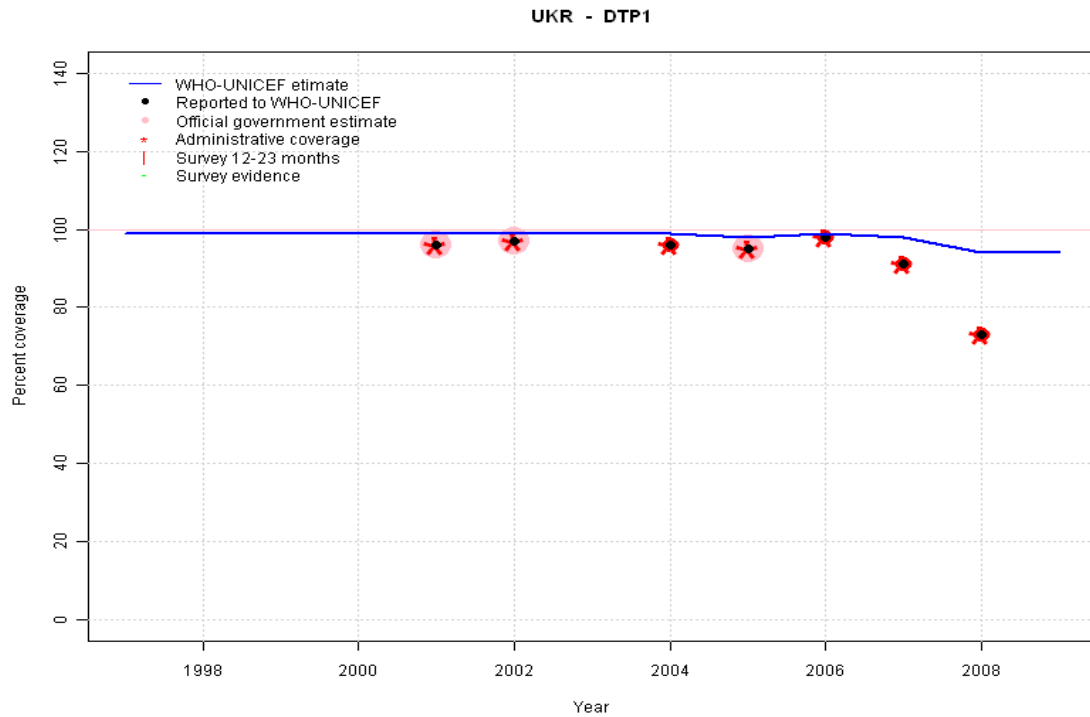
2007: Estimate based on reported data.

2008: Estimate based on reported data.

2009: Estimate based on trend in reported data. Missing or ignored reported value estimated by extrapolation from 2008 reported value of 95 percent.

	1997	1998	1999	2000	2001	2002	2003	2004	2005	2006	2007	2008	2009
Estimate	97	97	99	99	98	98	98	98	96	97	98	95	95
Reported	97	97	99	99	98	98	98	98	96	97	98	95	NA
Official	NA	NA	99	98	98	98	98	98	96	97	NA	95	NA
Administrative	NA	NA	96	98	98	98	98	96	96	97	98	96	NA
Survey	NA	NA	NA	NA	NA	NA	NA	NA	NA	NA	NA	NA	NA

Ukraine - DTP1



	1997	1998	1999	2000	2001	2002	2003	2004	2005	2006	2007	2008	2009
Estimate	99	99	99	99	99	99	99	99	98	99	98	94	94
Reported	NA	NA	NA	NA	96	97	NA	96	95	98	91	73	NA
Official	NA	NA	NA	NA	96	97	NA	NA	95	NA	NA	NA	NA
Administrative	NA	NA	NA	NA	96	97	NA	96	95	98	91	73	NA
Survey	NA	NA	NA	NA	NA	NA	NA	NA	NA	NA	NA	NA	NA

Description:

1997: Legacy estimate.

1998: Estimate calibrated to 1997 level (99 percent) and reported coverage (96 percent).

1999: Estimate calibrated to 1997 level (99 percent) and reported coverage (96 percent).

2000: Estimate calibrated to 1997 level (99 percent) and reported coverage (96 percent).

2001: Estimate calibrated to 1997 level (99 percent) and reported coverage (96 percent).

2002: Estimate calibrated to 1997 level (99 percent) and reported coverage (97 percent).

2003: Estimate calibrated to 1997 level (99 percent) and reported coverage (97 percent).

2004: Estimate calibrated to 1997 level (99 percent) and reported coverage (96 percent).

2005: Estimate calibrated to 1997 level (99 percent) and reported coverage (95 percent).

2006: Estimate calibrated to 1997 level (99 percent) and reported coverage (98 percent).

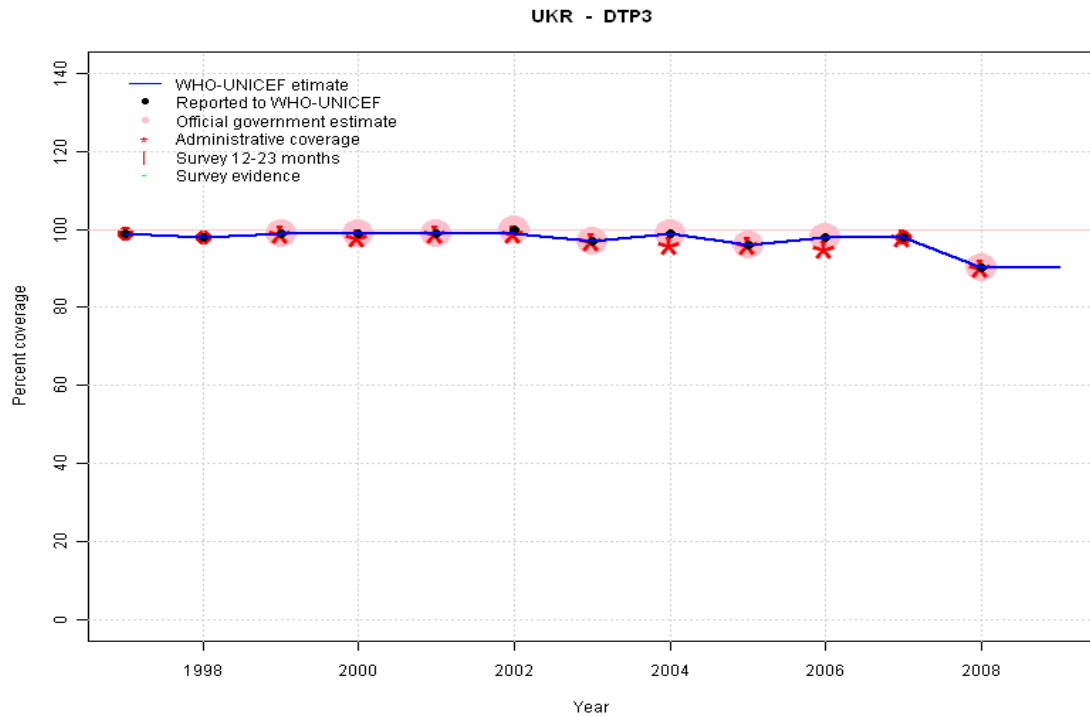
2007: Estimated DTP3 greater than estimated DTP1; DTP1 estimate based on the relationship between DTP1 and DTP3 from 282 surveys.

2008: Estimate calibrated to 1997 level (99 percent) and reported coverage (91 percent). 2008 reported data (73 percent) inconsistent with data from other years.

2009: Estimate calibrated to 1997 level (99 percent) and reported coverage (91 percent).

Ukraine - DTP3

Description:

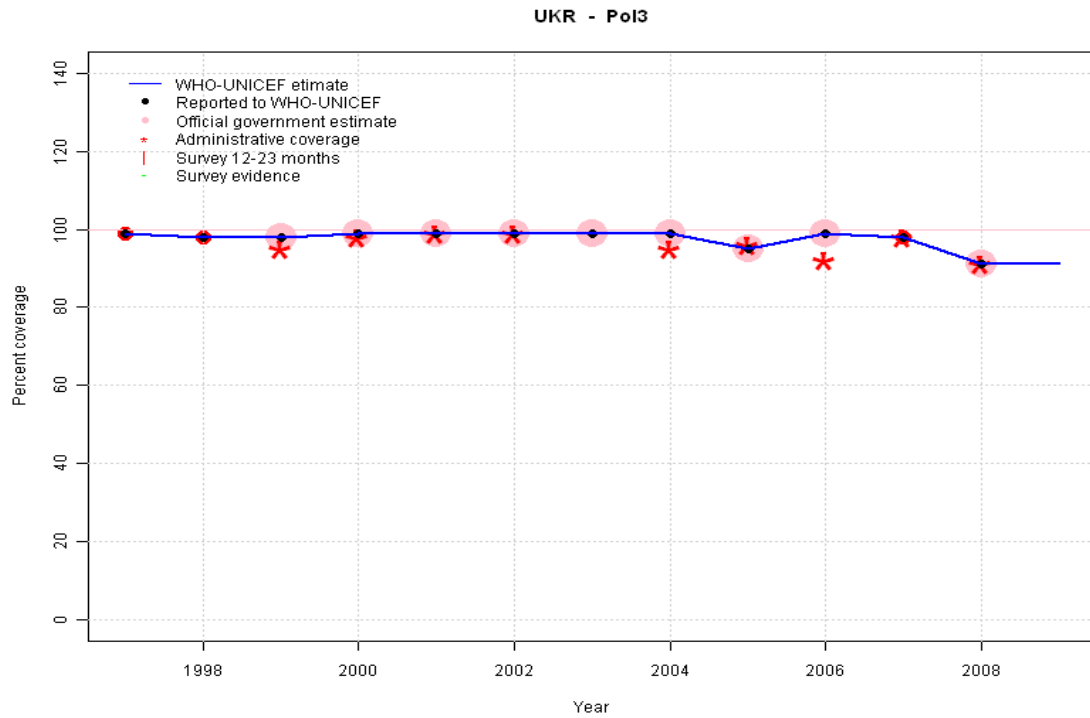


- 1997: Legacy estimate.
- 1998: Estimate based on reported data.
- 1999: Estimate based on reported data.
- 2000: Estimate based on reported data.
- 2001: Estimate based on reported data.
- 2002: Estimate based on reported data.
- 2003: Estimate based on reported data.
- 2004: Estimate based on reported data.
- 2005: Estimate based on reported data.
- 2006: Estimate based on reported data.
- 2007: Estimate based on reported data.
- 2008: Estimate based on reported data.
- 2009: Estimate based on trend in reported data. Missing or ignored reported value estimated by extrapolation from 2008 reported value of 90 percent.

	1997	1998	1999	2000	2001	2002	2003	2004	2005	2006	2007	2008	2009
Estimate	99	98	99	99	99	99	97	99	96	98	98	90	90
Reported	99	98	99	99	99	100	97	99	96	98	98	90	NA
Official	NA	NA	99	99	99	100	97	99	96	98	NA	90	NA
Administrative	NA	NA	99	98	99	99	97	96	96	95	98	90	NA
Survey	NA	NA	NA	NA	NA	NA	NA	NA	NA	NA	NA	NA	NA

Ukraine - Pol3

Description:

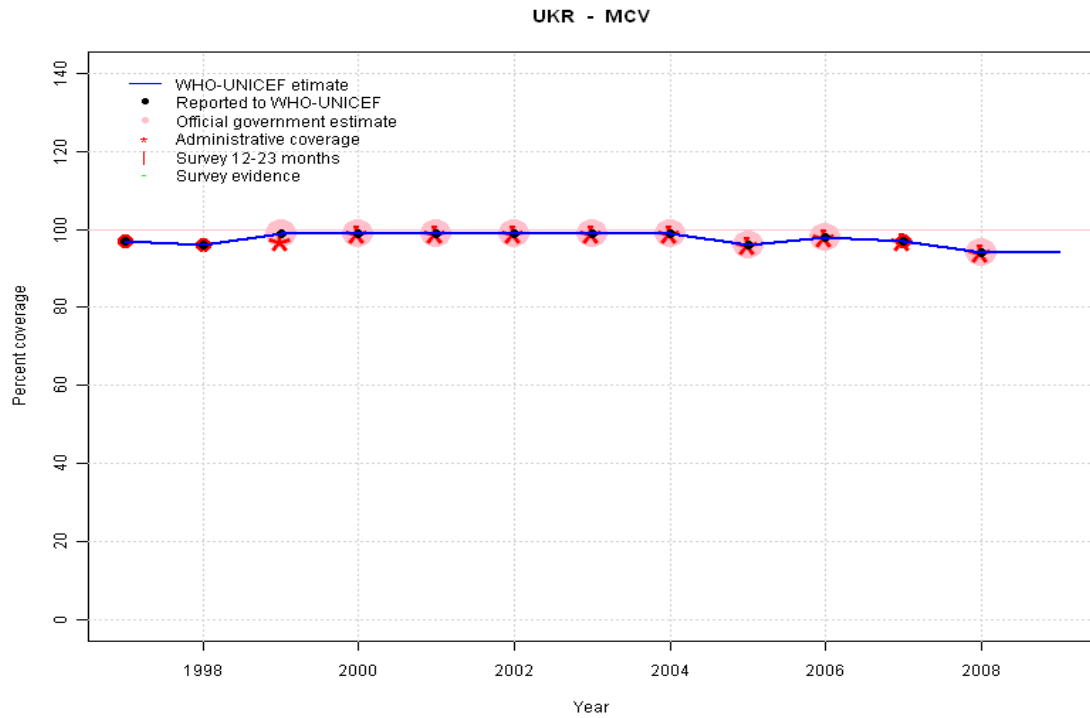


- 1997: Legacy estimate.
- 1998: Estimate based on reported data.
- 1999: Estimate based on reported data.
- 2000: Estimate based on reported data.
- 2001: Estimate based on reported data.
- 2002: Estimate based on reported data.
- 2003: Estimate based on reported data.
- 2004: Estimate based on reported data.
- 2005: Estimate based on reported data.
- 2006: Estimate based on reported data.
- 2007: Estimate based on reported data.
- 2008: Estimate based on reported data.
- 2009: Estimate based on trend in reported data. Missing or ignored reported value estimated by extrapolation from 2008 reported value of 91 percent.

	1997	1998	1999	2000	2001	2002	2003	2004	2005	2006	2007	2008	2009
Estimate	99	98	98	99	99	99	99	99	95	99	98	91	91
Reported	99	98	98	99	99	99	99	99	95	99	98	91	NA
Official	NA	NA	98	99	99	99	99	99	95	99	NA	91	NA
Administrative	NA	NA	95	98	99	99	NA	95	96	92	98	91	NA
Survey	NA	NA	NA	NA	NA	NA	NA	NA	NA	NA	NA	NA	NA

Ukraine - MCV

Description:



- 1997: Legacy estimate.
- 1998: Estimate based on reported data.
- 1999: Estimate based on reported data.
- 2000: Estimate based on reported data.
- 2001: Estimate based on reported data.
- 2002: Estimate based on reported data.
- 2003: Estimate based on reported data.
- 2004: Estimate based on reported data.
- 2005: Estimate based on reported data.
- 2006: Estimate based on reported data.
- 2007: Estimate based on reported data.
- 2008: Estimate based on reported data.
- 2009: Estimate based on trend in reported data. Missing or ignored reported value estimated by extrapolation from 2008 reported value of 94 percent.

	1997	1998	1999	2000	2001	2002	2003	2004	2005	2006	2007	2008	2009
Estimate	97	96	99	99	99	99	99	99	96	98	97	94	94
Reported	97	96	99	99	99	99	99	99	96	98	97	94	NA
Official	NA	NA	99	99	99	99	99	99	96	98	NA	94	NA
Administrative	NA	NA	97	99	99	99	99	99	96	98	97	94	NA
Survey	NA	NA	NA	NA	NA	NA	NA	NA	NA	NA	NA	NA	NA

Ukraine - HepB3

Description:

2000: Estimate based on reported data. HepB partially introduced in 2001 nationally in 2003 reporting started in 2000. Vaccine presentation is HepB

2001: Estimate based on reported data.

2002: Estimate based on reported data.

2003: Estimate based on reported data.

2004: Estimate based on reported data.

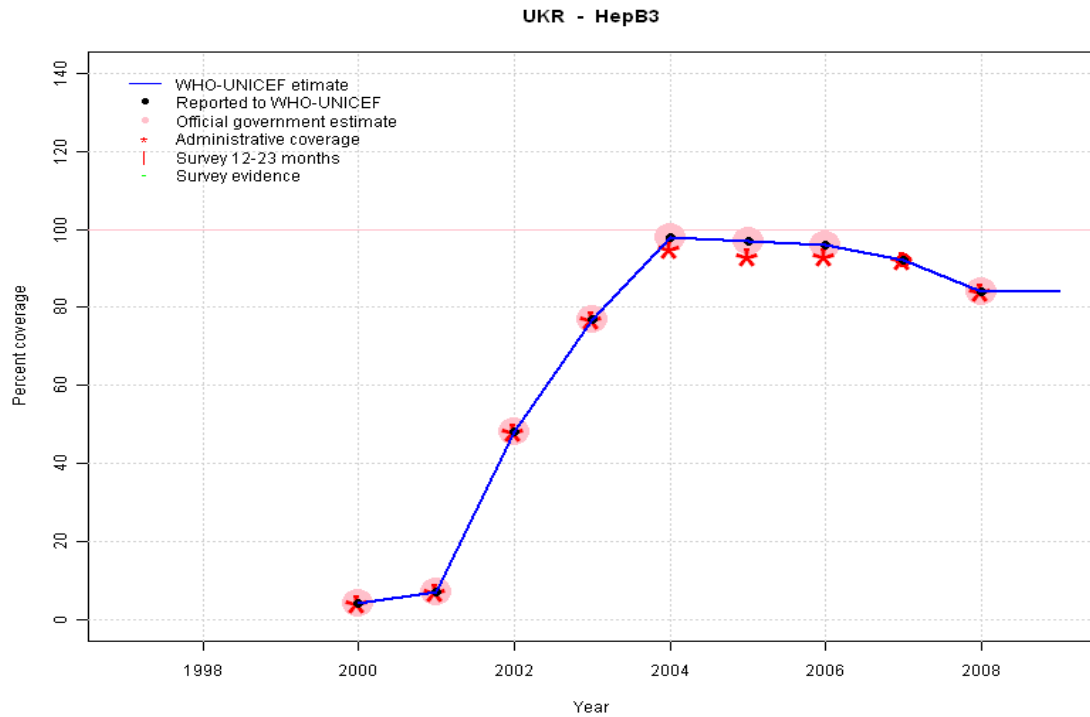
2005: Estimate based on reported data.

2006: Estimate based on reported data.

2007: Estimate based on reported data.

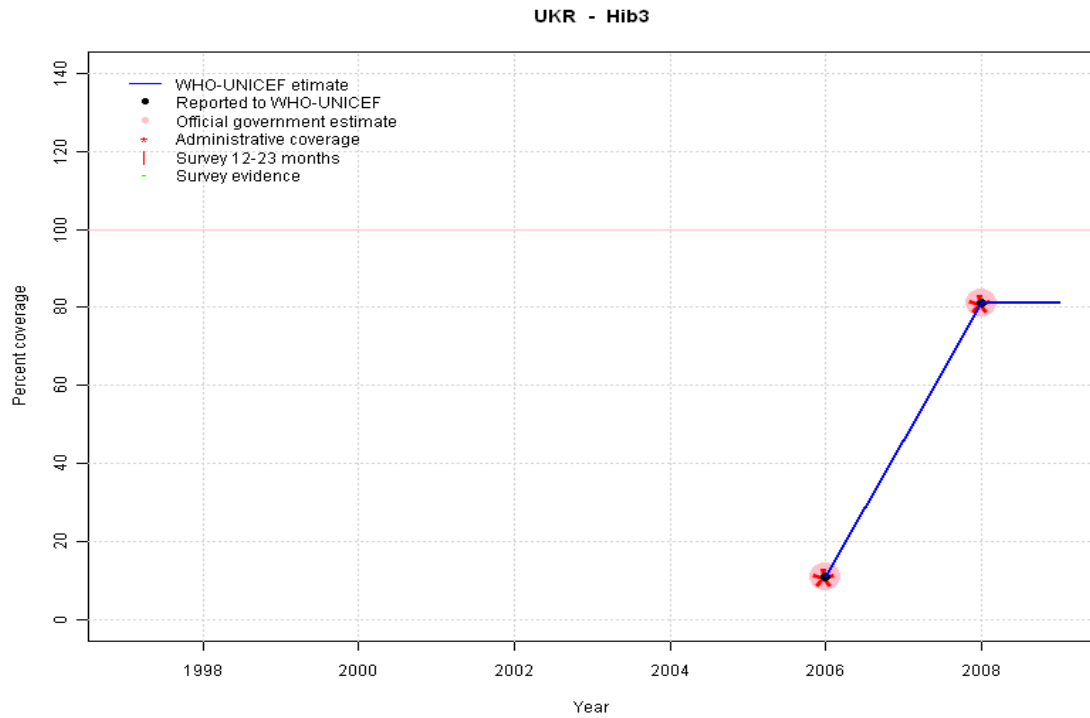
2008: Estimate based on reported data.

2009: Estimate based on reported data. Missing or ignored reported value estimated by extrapolation from 2008 reported value of 84 percent.



	1997	1998	1999	2000	2001	2002	2003	2004	2005	2006	2007	2008	2009
Estimate	NA	NA	NA	4	7	48	77	98	97	96	92	84	84
Reported	NA	NA	NA	4	7	48	77	98	97	96	92	84	NA
Official	NA	NA	NA	4	7	48	77	98	97	96	NA	84	NA
Administrative	NA	NA	NA	4	7	48	77	95	93	93	92	84	NA
Survey	NA	NA	NA	NA	NA	NA	NA	NA	NA	NA	NA	NA	NA

Ukraine - Hib3



Description:

2006: Estimate based on reported data. Hib introduced in 2006

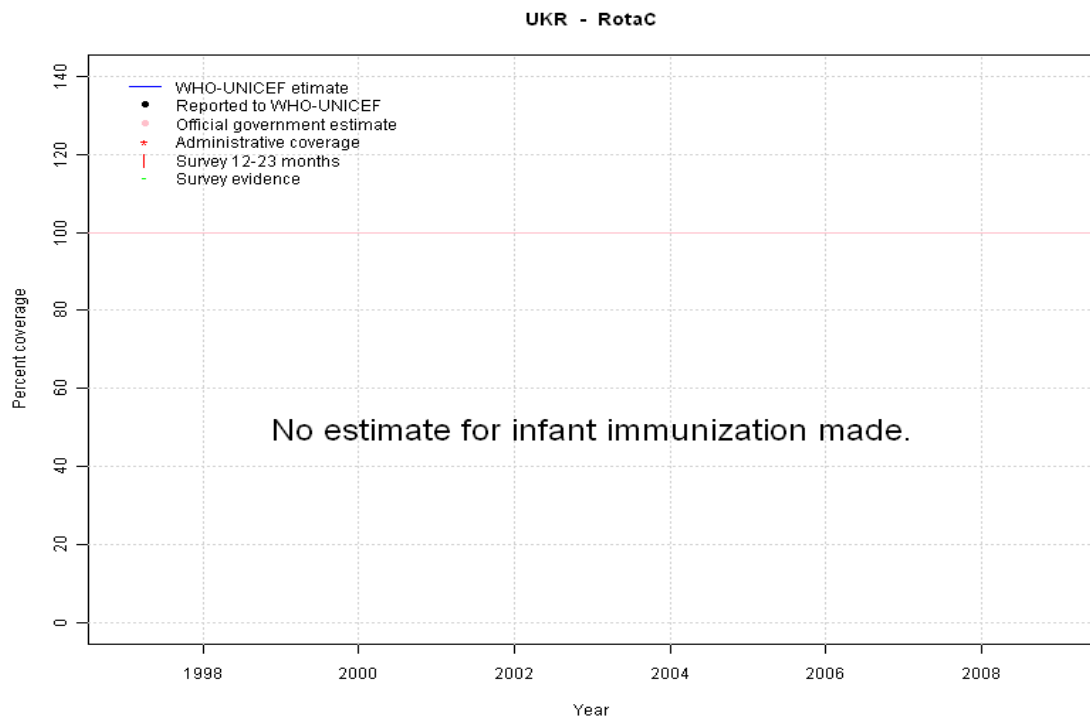
2007: Estimate based on reported data. Missing or ignored reported value estimated by interpolation between reported values of 11 percent in 2006 and 81 percent in 2008.

2008: Estimate based on reported data.

2009: Estimate based on reported data. Missing or ignored reported value estimated by extrapolation from 2008 reported value of 81 percent.

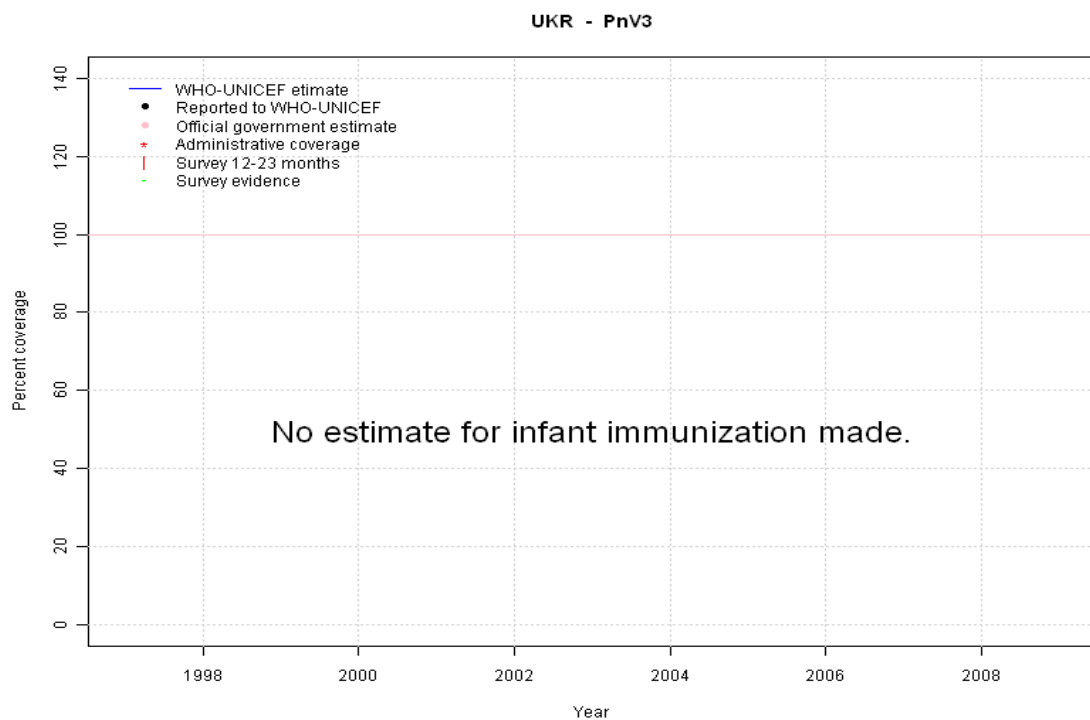
	1997	1998	1999	2000	2001	2002	2003	2004	2005	2006	2007	2008	2009
Estimate	NA	NA	NA	NA	NA	NA	NA	NA	NA	11	46	81	81
Reported	NA	NA	NA	NA	NA	NA	NA	NA	NA	11	NA	81	NA
Official	NA	NA	NA	NA	NA	NA	NA	NA	NA	11	NA	81	NA
Administrative	NA	NA	NA	NA	NA	NA	NA	NA	NA	11	NA	81	NA
Survey	NA	NA	NA	NA	NA	NA	NA	NA	NA	NA	NA	NA	NA

Ukraine - RotaC



	1997	1998	1999	2000	2001	2002	2003	2004	2005	2006	2007	2008	2009
Estimate	NA	NA	NA	NA	NA	NA	NA	NA	NA	NA	NA	NA	NA
Reported	NA	NA	NA	NA	NA	NA	NA	NA	NA	NA	NA	NA	NA
Official	NA	NA	NA	NA	NA	NA	NA	NA	NA	NA	NA	NA	NA
Administrative	NA	NA	NA	NA	NA	NA	NA	NA	NA	NA	NA	NA	NA
Survey	NA	NA	NA	NA	NA	NA	NA	NA	NA	NA	NA	NA	NA

Ukraine - PnV3



	1997	1998	1999	2000	2001	2002	2003	2004	2005	2006	2007	2008	2009
Estimate	NA	NA	NA	NA	NA	NA	NA	NA	NA	NA	NA	NA	NA
Reported	NA	NA	NA	NA	NA	NA	NA	NA	NA	NA	NA	NA	NA
Official	NA	NA	NA	NA	NA	NA	NA	NA	NA	NA	NA	NA	NA
Administrative	NA	NA	NA	NA	NA	NA	NA	NA	NA	NA	NA	NA	NA
Survey	NA	NA	NA	NA	NA	NA	NA	NA	NA	NA	NA	NA	NA

Further information and estimates for 1980-1996 are available at:

http://www.childinfo.org/immunization_countryreports.html

http://www.who.int/immunization_monitoring/routine/immunization_coverage/en/index4.html