



WHO / UNICEF

**Joint Monitoring Programme
for Water Supply and Sanitation**

Coverage Estimates
Improved Sanitation

Updated in July 2008

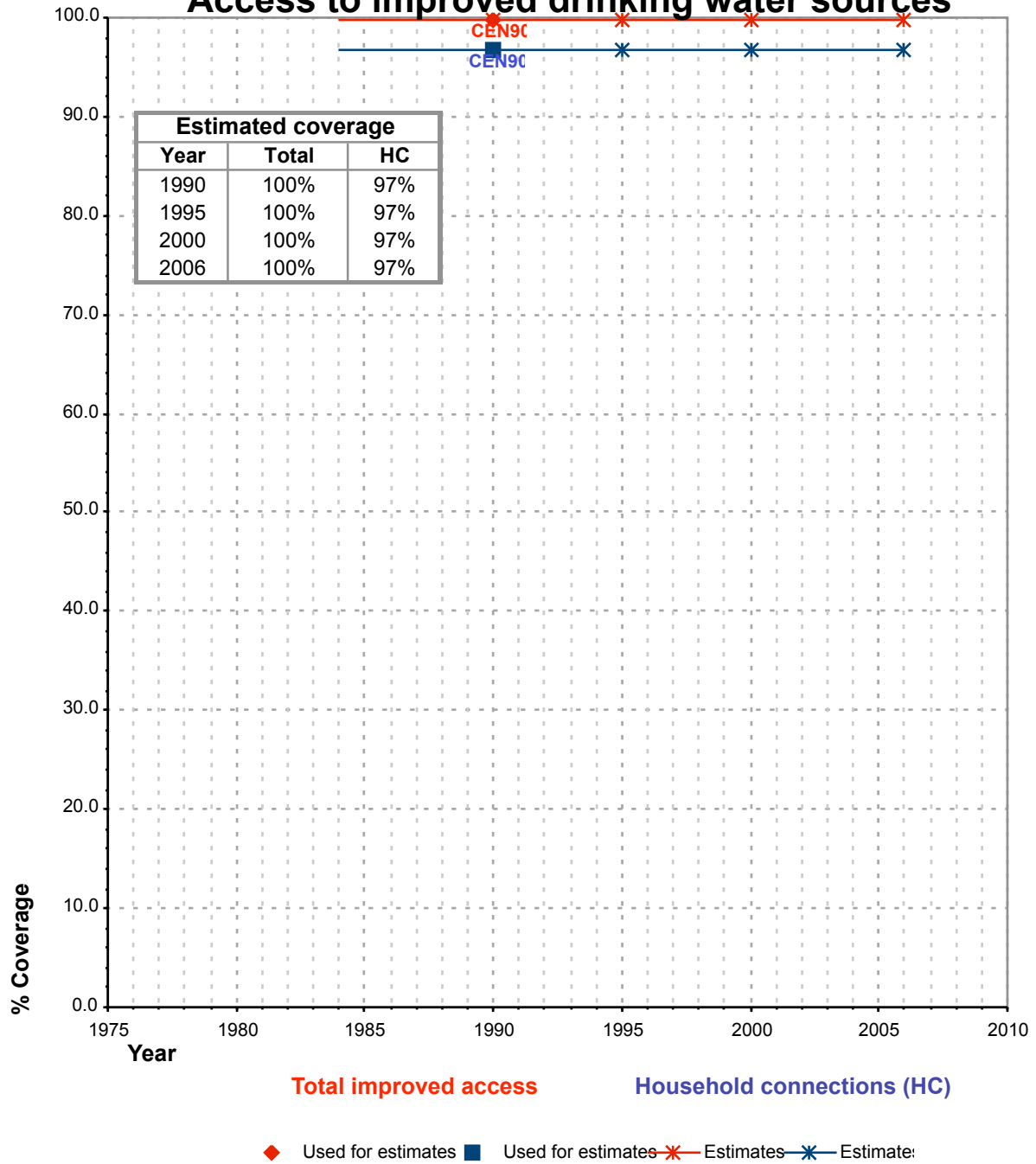
United States

Census		1990	
SANITATION	Urban	Rural	
Sewage system	91.3	22.1	
Septic tank	8.3	75.1	
No access to sewage system	0.4	2.8	
TOTAL	100.0	100.0	
50% of No access to sewage Improved	0.2	1.4	
Access to improved sanitation	100%	99%	
% House connections	91%	22%	

Source: United States census 1990 (10% micro dataset from IPUMS).

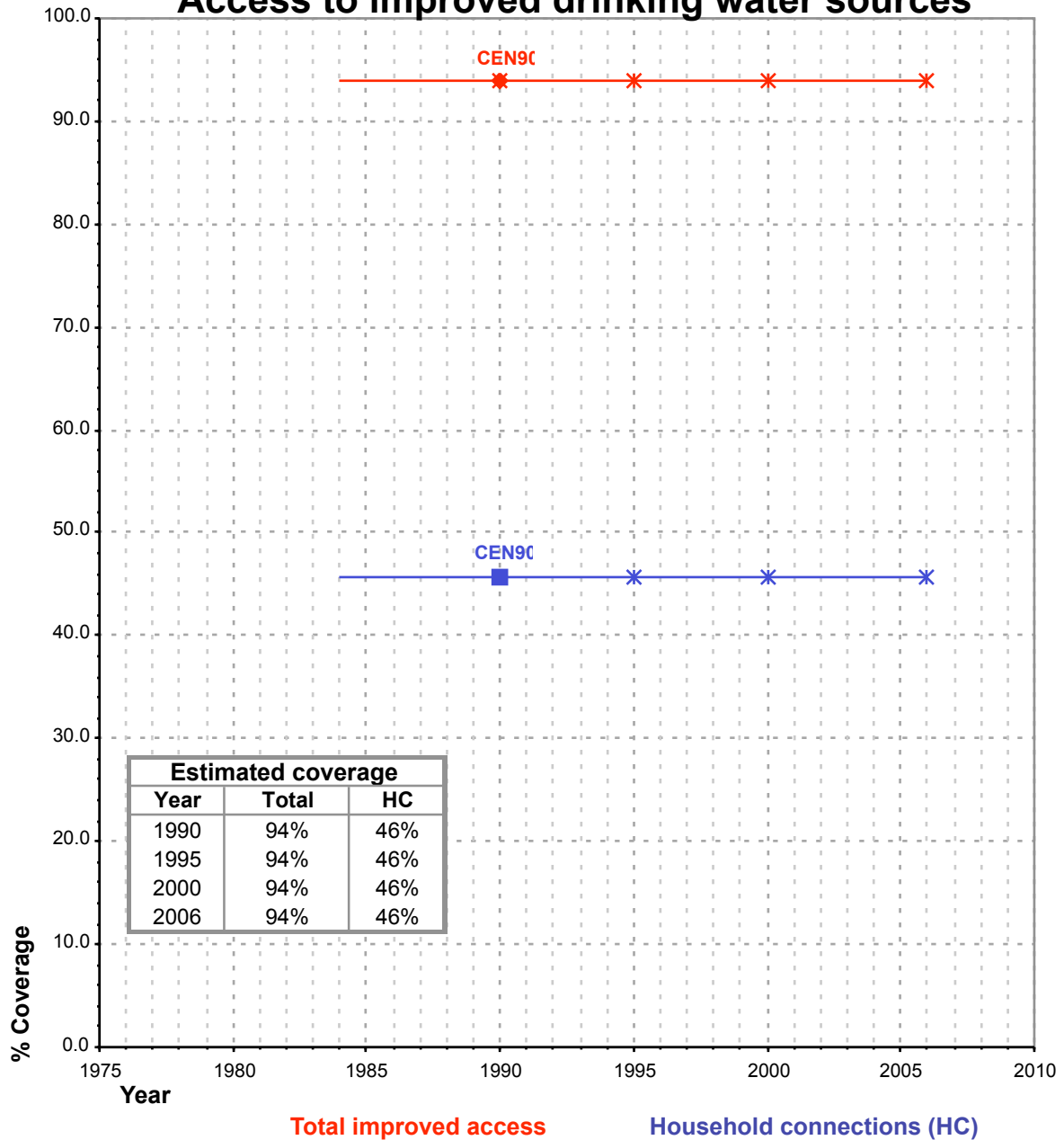
United States of America			DRINKING WATER							
			URBAN				RURAL			
			HC		Total		HC		Total	
Source	Code	Year	Used for estimates	Not used for estimates	Used for estimates	Not used for estimates	Used for estimates	Not used for estimates	Used for estimates	Not used for estimates
Global Water Supply and Sanitation Assessment 2000. Water Supply and Sanitation Sector Questionnaire - 1999. (Form 6 sent to WHO)	JMP99	1999		100.0		100.0		100.0		100.0
United States census 1990 (10% micro dataset from IPUMS).	CEN90	1990	96.8		99.8		45.7		94.0	

United States of America - urban - Access to improved drinking water sources



Total access :
Household connections :

United States of America - rural - Access to improved drinking water sources



◆ Used for estimates
 ■ Used for estimates
 *— Estimates
 *— Estimates

Total access :
 Household connections :