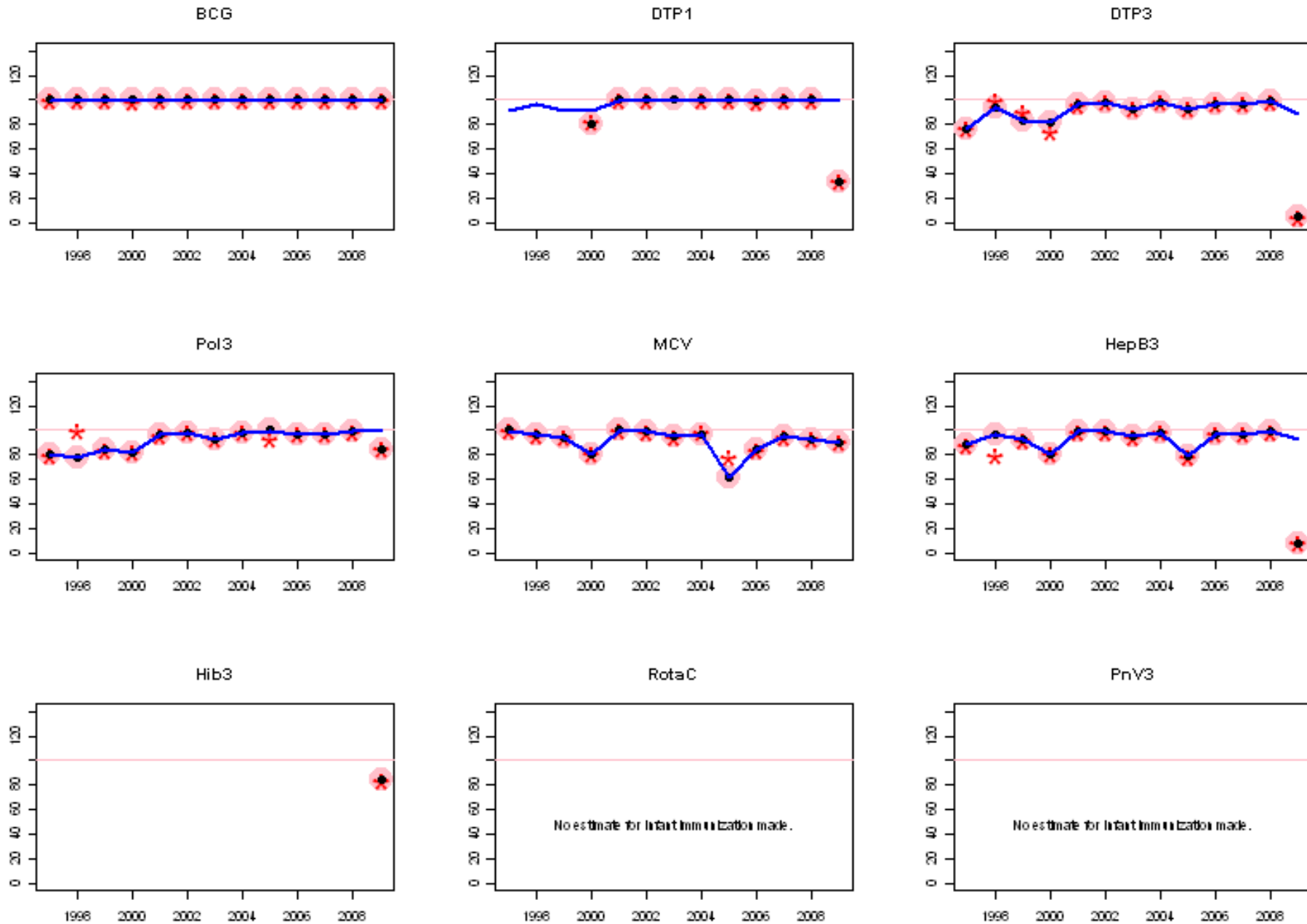
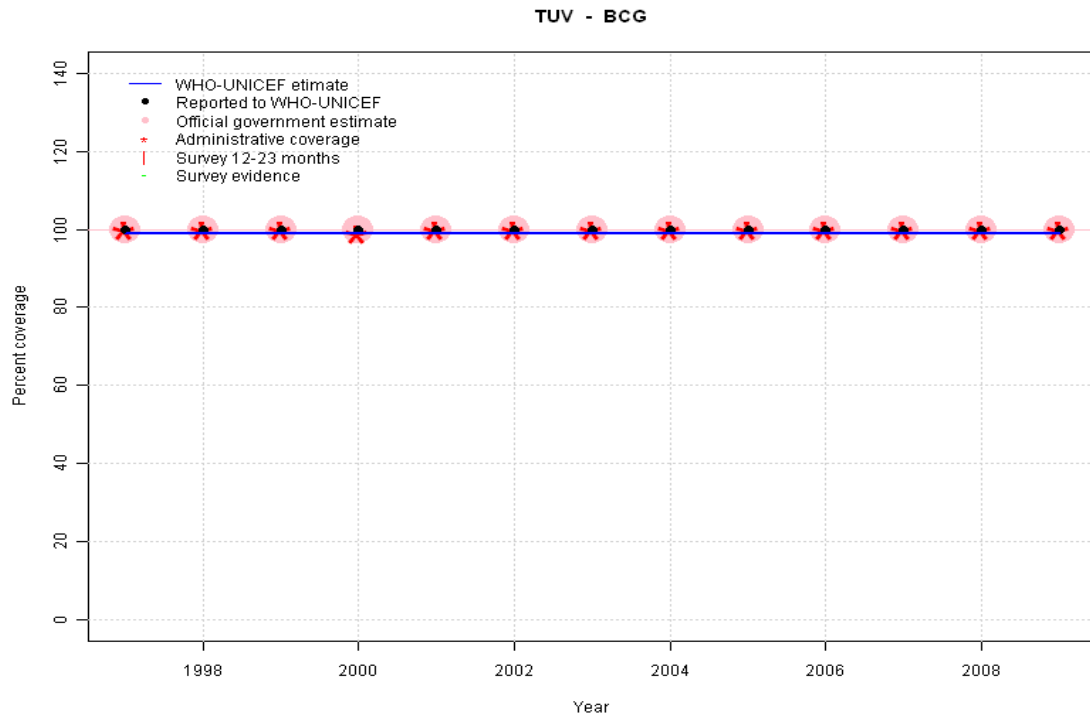


Tuvalu: WHO and UNICEF estimates of immunization coverage, 1997 - 2009



# Tuvalu - BCG

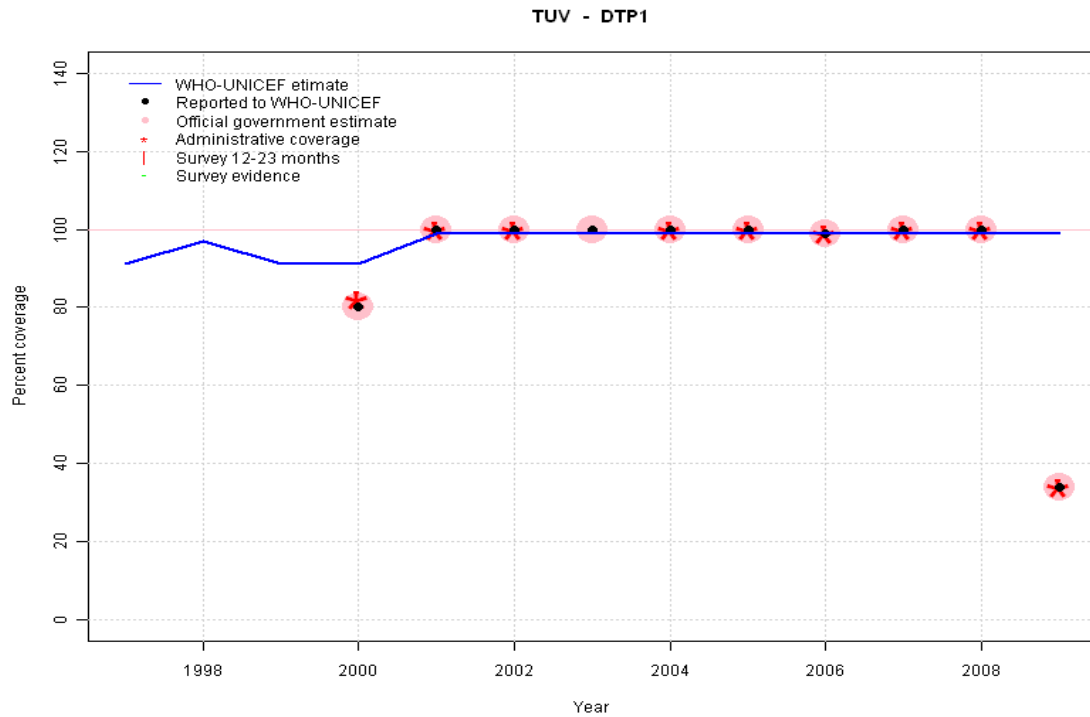
## Description:



1997: Legacy estimate.  
 1998: Estimate based on reported data.  
 1999: Estimate based on reported data.  
 2000: Estimate based on reported data.  
 2001: Estimate based on reported data.  
 2002: Estimate based on reported data.  
 2003: Estimate based on reported data.  
 2004: Estimate based on reported data.  
 2005: Estimate based on reported data.  
 2006: Estimate based on reported data.  
 2007: Estimate based on reported data.  
 2008: Estimate based on reported data.  
 2009: Estimate based on reported data.

	1997	1998	1999	2000	2001	2002	2003	2004	2005	2006	2007	2008	2009
Estimate	99	99	99	99	99	99	99	99	99	99	99	99	99
Reported	100	100	100	100	100	100	100	100	100	100	100	100	100
Official	100	100	100	100	100	100	100	100	100	100	100	100	100
Administrative	100	100	100	99	100	100	100	100	100	100	100	100	100
Survey	NA	NA	NA	NA	NA	NA	NA	NA	NA	NA	NA	NA	NA

# Tuvalu - DTP1



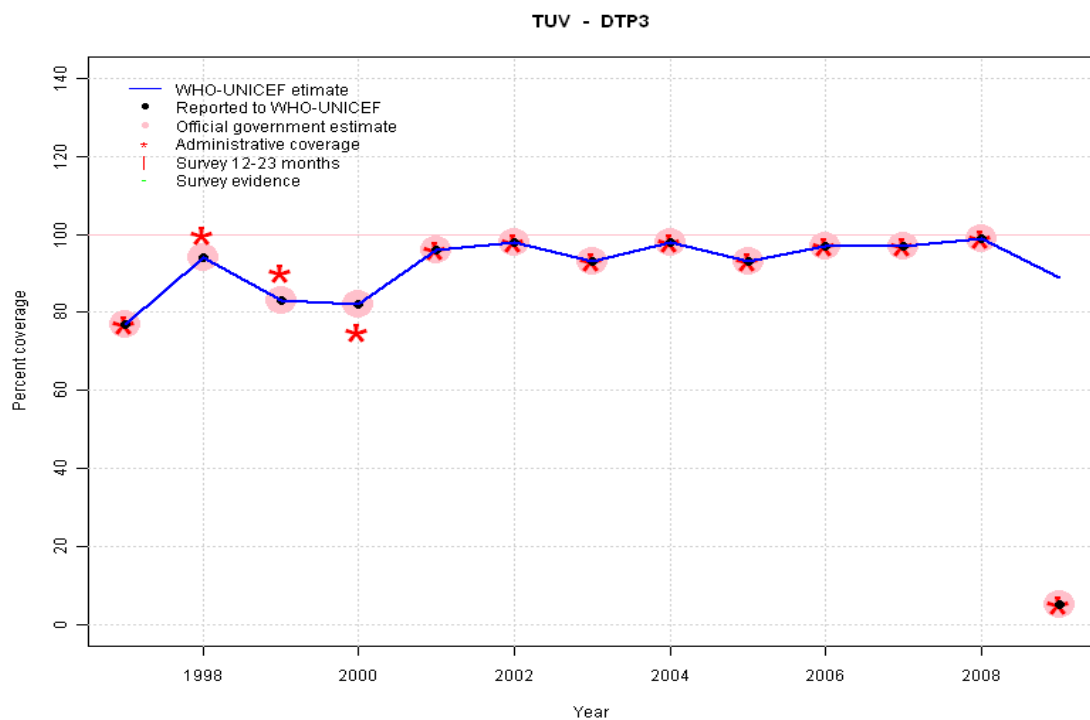
	1997	1998	1999	2000	2001	2002	2003	2004	2005	2006	2007	2008	2009
Estimate	91	97	91	91	99	99	99	99	99	99	99	99	99
Reported	NA	NA	NA	80	100	100	100	100	100	99	100	100	34
Official	NA	NA	NA	80	100	100	100	100	100	99	100	100	34
Administrative	NA	NA	NA	82	100	100	NA	100	100	99	100	100	34
Survey	NA	NA	NA	NA	NA	NA	NA	NA	NA	NA	NA	NA	NA

## Description:

- 1997: Legacy estimate.
- 1998: Estimated DTP3 greater than estimated DTP1; DTP1 estimate based on the relationship between DTP1 and DTP3 from 282 surveys.
- 1999: Estimate calibrated to 1997 level (91 percent) and reported coverage (80 percent).
- 2000: Estimate calibrated to 1997 level (91 percent) and reported coverage (80 percent).
- 2001: Estimate calibrated to 1997 level (91 percent) and reported coverage (99 percent).
- 2002: Estimate calibrated to 1997 level (91 percent) and reported coverage (99 percent).
- 2003: Estimate calibrated to 1997 level (91 percent) and reported coverage (99 percent).
- 2004: Estimate calibrated to 1997 level (91 percent) and reported coverage (99 percent).
- 2005: Estimate calibrated to 1997 level (91 percent) and reported coverage (99 percent).
- 2006: Estimate calibrated to 1997 level (91 percent) and reported coverage (99 percent).
- 2007: Estimate calibrated to 1997 level (91 percent) and reported coverage (99 percent).
- 2008: Estimate calibrated to 1997 level (91 percent) and reported coverage (99 percent).
- 2009: Estimate calibrated to 1997 level (91 percent) and reported coverage (99 percent). 2009 reported data (34 percent) inconsistent with data from other years.

# Tuvalu - DTP3

## Description:

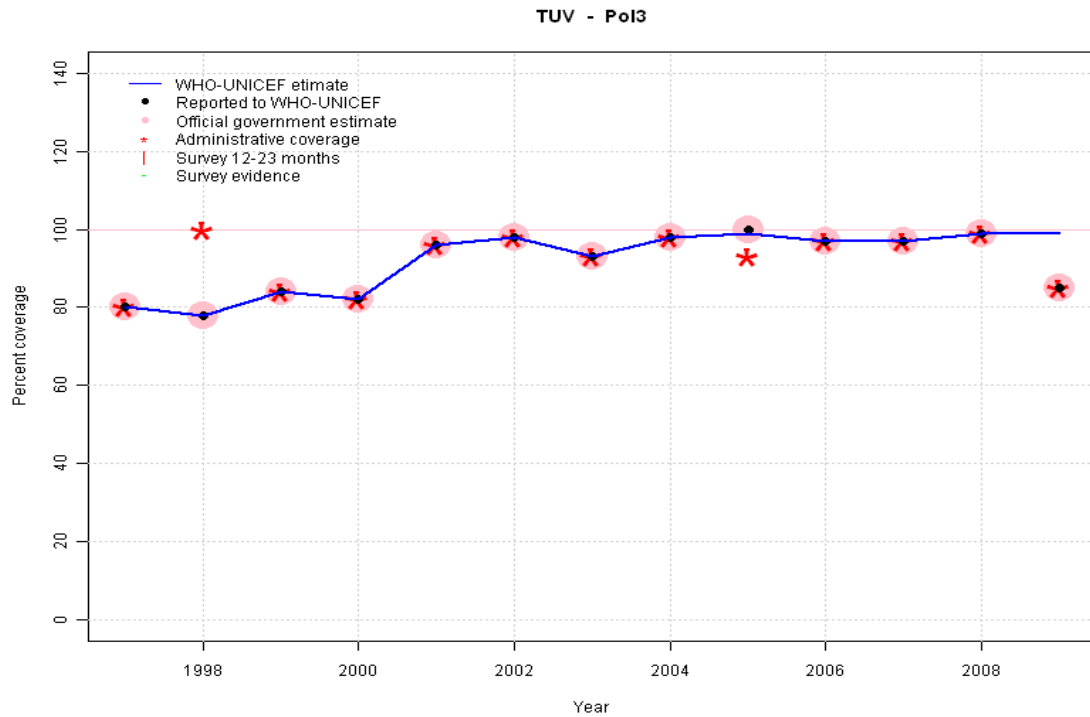


1997: Legacy estimate.  
 1998: Estimate based on reported data.  
 1999: Estimate based on reported data.  
 2000: Estimate based on reported data.  
 2001: Estimate based on reported data.  
 2002: Estimate based on reported data.  
 2003: Estimate based on reported data.  
 2004: Estimate based on reported data.  
 2005: Estimate based on reported data.  
 2006: Estimate based on reported data.  
 2007: Estimate based on reported data.  
 2008:  
 2009: Pentavalent introduced July 2009, 5 percent received trivalent 2009 reported data (5 percent) inconsistent with data from other years.

	1997	1998	1999	2000	2001	2002	2003	2004	2005	2006	2007	2008	2009
Estimate	77	94	83	82	96	98	93	98	93	97	97	99	89
Reported	77	94	83	82	96	98	93	98	93	97	97	99	5
Official	77	94	83	82	96	98	93	98	93	97	97	99	5
Administrative	77	100	90	75	96	98	93	98	93	97	97	99	5
Survey	NA	NA	NA	NA	NA	NA	NA	NA	NA	NA	NA	NA	NA

# Tuvalu - Pol3

## Description:

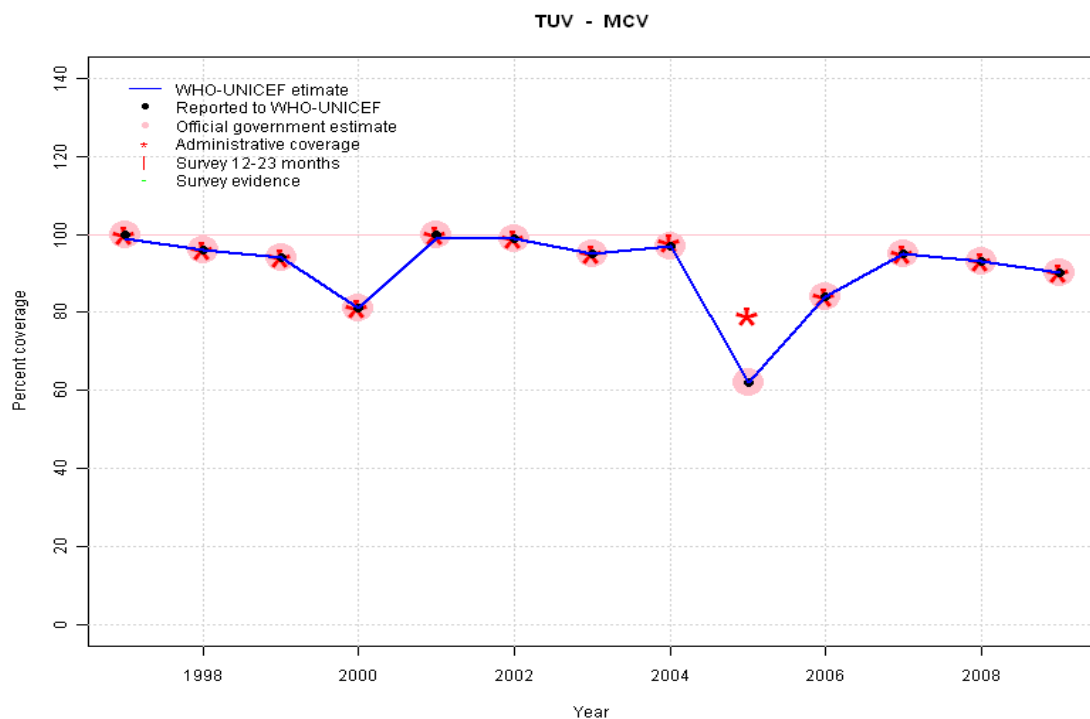


- 1997: Legacy estimate.
- 1998: Estimate based on reported data.
- 1999: Estimate based on reported data.
- 2000: Estimate based on reported data.
- 2001: Estimate based on reported data.
- 2002: Estimate based on reported data.
- 2003: Estimate based on reported data.
- 2004: Estimate based on reported data.
- 2005: Estimate based on reported data.
- 2006: Estimate based on reported data.
- 2007: Estimate based on reported data.
- 2008: Estimate based on reported data.
- 2009: Estimate based on trend in reported data. Missing or ignored reported value estimated by extrapolation from 2008 reported value of 99 percent. 2009 reported data (85 percent) inconsistent with data from other years.

	1997	1998	1999	2000	2001	2002	2003	2004	2005	2006	2007	2008	2009
Estimate	80	78	84	82	96	98	93	98	99	97	97	99	99
Reported	80	78	84	82	96	98	93	98	100	97	97	99	85
Official	80	78	84	82	96	98	93	98	100	97	97	99	85
Administrative	80	100	84	82	96	98	93	98	93	97	97	99	85
Survey	NA	NA	NA	NA	NA	NA	NA	NA	NA	NA	NA	NA	NA

# Tuvalu - MCV

## Description:

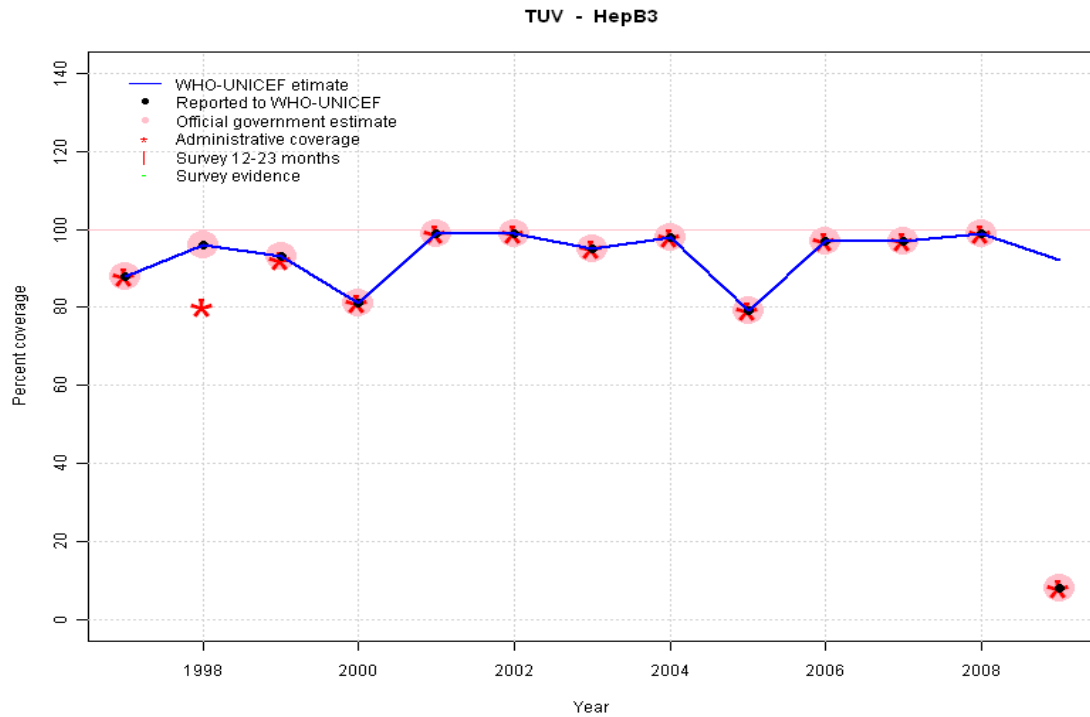


- 1997: Legacy estimate.
- 1998: Estimate based on reported data.
- 1999: Estimate based on reported data.
- 2000: Estimate based on reported data.
- 2001: Estimate based on reported data.
- 2002: Estimate based on reported data.
- 2003: Estimate based on reported data.
- 2004: Estimate based on reported data.
- 2005: Estimate based on reported data.
- 2006: Estimate based on reported data.
- 2007: Estimate based on reported data.
- 2008: Estimate based on reported data.
- 2009: Estimate based on reported data.

	1997	1998	1999	2000	2001	2002	2003	2004	2005	2006	2007	2008	2009
Estimate	99	96	94	81	99	99	95	97	62	84	95	93	90
Reported	100	96	94	81	100	99	95	97	62	84	95	93	90
Official	100	96	94	81	100	99	95	97	62	84	95	93	90
Administrative	100	96	94	81	100	99	95	98	79	84	95	93	90
Survey	NA	NA	NA	NA	NA	NA	NA	NA	NA	NA	NA	NA	NA

# Tuvalu - HepB3

## Description:



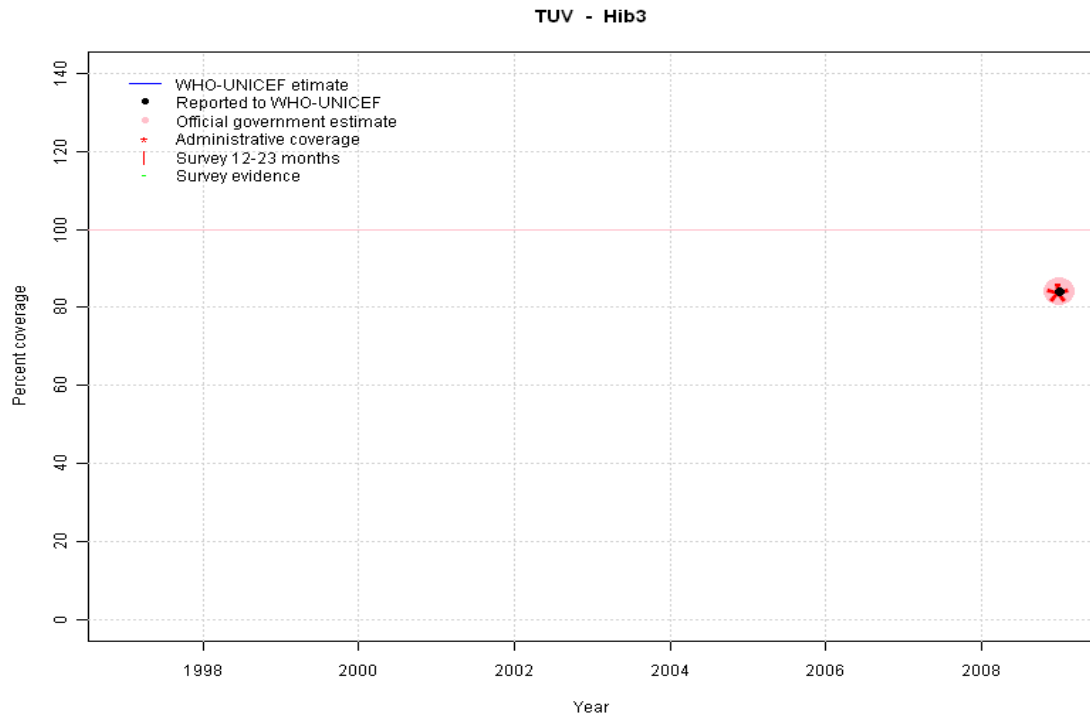
1997: Legacy estimate.  
 1998: Estimate based on reported data.  
 1999: Estimate based on reported data.  
 2000: Estimate based on reported data.  
 2001: Estimate based on reported data.  
 2002: Estimate based on reported data.  
 2003: Estimate based on reported data.  
 2004: Estimate based on reported data.  
 2005: Estimate based on reported data.  
 2006: Estimate based on reported data.  
 2007: Estimate based on reported data.  
 2008:  
 2009: Pentavalent introduced July 2009, 8 percent received monovalent 2009 reported data (8 percent) inconsistent with data from other years.

	1997	1998	1999	2000	2001	2002	2003	2004	2005	2006	2007	2008	2009
Estimate	88	96	93	81	99	99	95	98	79	97	97	99	92
Reported	88	96	93	81	99	99	95	98	79	97	97	99	8
Official	88	96	93	81	99	99	95	98	79	97	97	99	8
Administrative	88	80	92	81	99	99	95	98	79	97	97	99	8
Survey	NA	NA	NA	NA	NA	NA	NA	NA	NA	NA	NA	NA	NA

# Tuvalu - Hib3

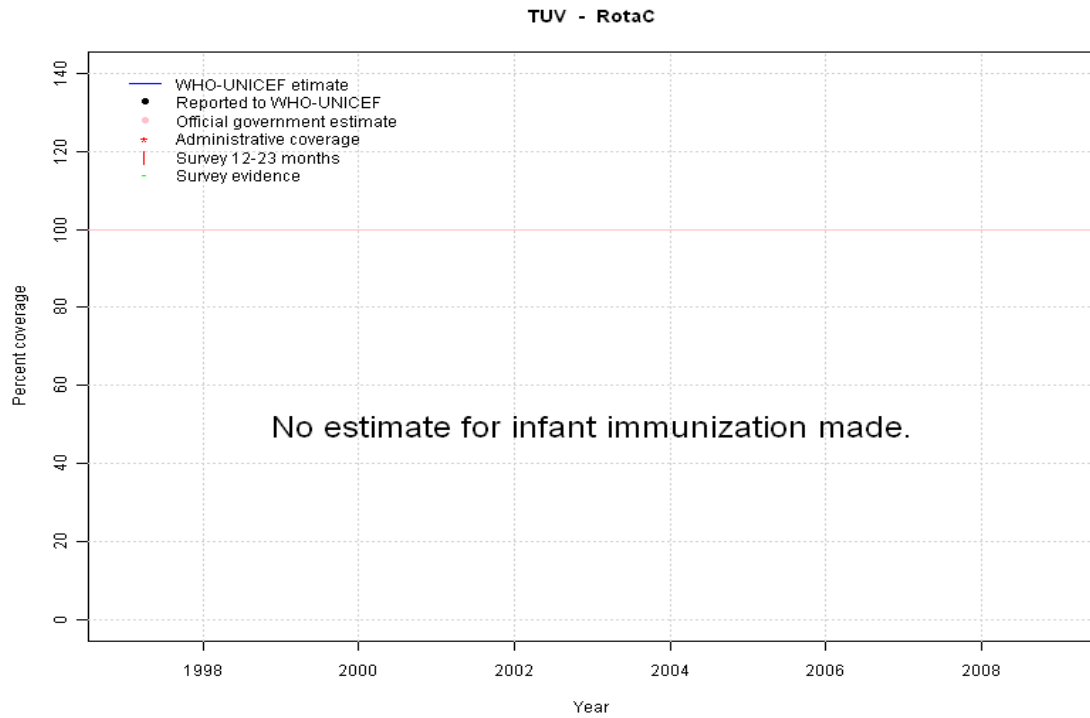
## Description:

2009: Estimate based on reported data. Hib introduced in 2009



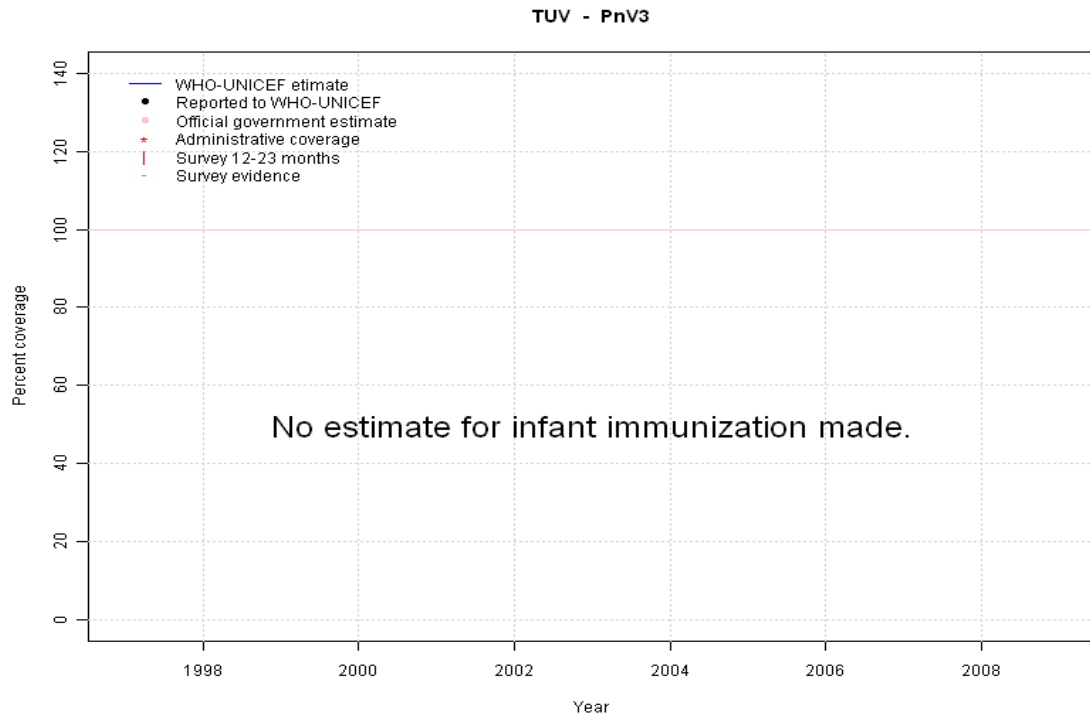
	1997	1998	1999	2000	2001	2002	2003	2004	2005	2006	2007	2008	2009
Estimate	NA	NA	NA	NA	NA	NA	NA	NA	NA	NA	NA	NA	84
Reported	NA	NA	NA	NA	NA	NA	NA	NA	NA	NA	NA	NA	84
Official	NA	NA	NA	NA	NA	NA	NA	NA	NA	NA	NA	NA	84
Administrative	NA	NA	NA	NA	NA	NA	NA	NA	NA	NA	NA	NA	84
Survey	NA	NA	NA	NA	NA	NA	NA	NA	NA	NA	NA	NA	NA

# Tuvalu - RotaC



	1997	1998	1999	2000	2001	2002	2003	2004	2005	2006	2007	2008	2009
Estimate	NA	NA	NA	NA	NA	NA	NA	NA	NA	NA	NA	NA	NA
Reported	NA	NA	NA	NA	NA	NA	NA	NA	NA	NA	NA	NA	NA
Official	NA	NA	NA	NA	NA	NA	NA	NA	NA	NA	NA	NA	NA
Administrative	NA	NA	NA	NA	NA	NA	NA	NA	NA	NA	NA	NA	NA
Survey	NA	NA	NA	NA	NA	NA	NA	NA	NA	NA	NA	NA	NA

# Tuvalu - PnV3



	1997	1998	1999	2000	2001	2002	2003	2004	2005	2006	2007	2008	2009
Estimate	NA	NA	NA	NA	NA	NA	NA	NA	NA	NA	NA	NA	NA
Reported	NA	NA	NA	NA	NA	NA	NA	NA	NA	NA	NA	NA	NA
Official	NA	NA	NA	NA	NA	NA	NA	NA	NA	NA	NA	NA	NA
Administrative	NA	NA	NA	NA	NA	NA	NA	NA	NA	NA	NA	NA	NA
Survey	NA	NA	NA	NA	NA	NA	NA	NA	NA	NA	NA	NA	NA

Further information and estimates for 1980-1996 are available at:

[http://www.childinfo.org/immunization\\_countryreports.html](http://www.childinfo.org/immunization_countryreports.html)

[http://www.who.int/immunization\\_monitoring/routine/immunization\\_coverage/en/index4.html](http://www.who.int/immunization_monitoring/routine/immunization_coverage/en/index4.html)