



WHO / UNICEF

**Joint Monitoring Programme
for Water Supply and Sanitation**

Coverage Estimates

Improved Drinking Water

Updated in July 2008

Tunisia

DHS		1988	
WATER	Urban	Rural	
Drilled Well	85.2	17.5	
Standpipe	3.4	15.5	
Public Well	5.0	34.7	
Spring	1.3	20.2	
Public/Private Tank	2.7	8.5	
Pond	0.1	1.6	
Other	2.3	1.9	
TOTAL	100.0	100.0	
% protected springs estimated at 50%	0.7	10.1	
% of protected wells estimated based on MICS00	1.1	10.6	
Improved Drinking Water Excluding Well & Spring	89	33	
Improved Drinking Water Including 100% Well & Spring	90	54	
Access to improved drinking water sources	93%	62%	
Estimated House connections	86%	26%	

Source: Domestic and Household Survey, Tunisia, 1988.

MICS		2000	
WATER	Urban	Rural	
Eau courante maison	90.5	28.7	
Eau courante dehors	0.9	4.5	
Robinet pub	0.7	19.7	
Citerne	6.3	15.7	
Citerne metal	0.2	5.6	
Puit protégé	0.2	4.7	
Puit non prot	0.6	10.7	
Autre	0.6	10.4	
Manquant/DK	0.1	0.1	
TOTAL	100	100	
<i>ratio protected wells/ all wells</i>	<i>0.23</i>	<i>0.31</i>	
Access to improved drinking water sources	99%	79%	
% House connections	91%	33%	

Source: Tunisia Multi Indicator Cluster Survey 2000

Urban and Rural Water - Tunisia

Survey

PAPFAM		2002	
WATER	Urban	Rural	
Eau courante	90.2	39.8	
Robinet public	0.5	23.8	
Puits personnel	4.9	20.6	
Puits public	0.4	9.1	
Autre	4.0	6.6	
ND	0.0	0.1	
TOTAL	100.0	100.0	
% of protected wells estimated based on WHS03	5.0	14.9	
Access to improved drinking water sources	96%	78%	
% House connections	90%	40%	

Source: Pan Arab Project for Family Health, 2002

WHS		2003	
WATER	Urban	Rural	
Piped water through house connection or yard	95.6	36.6	
Public standpipe	0.5	24.4	
Protected tube well or bore hole	0.1	4.1	
Protected dug well or protected spring	0.3	7.1	
Rainwater (into tank or cistern)	2.9	9.7	
Unprotected dug well or spring	0.0	9.6	
Water taken directly from pond-water or stream	0.0	2.0	
Tanker-truck, vendor	0.6	6.5	
TOTAL	100.0	100.0	
Ratio of protected /all wells and springs	0.93	0.54	
Access to improved drinking water sources	99%	82%	
% House connections	96%	37%	

Source: World Health Survey, WHO, 2003.

Estimate

FORM-6/WHO	1999	
NO DATA SENT		
WATER	Urban	Rural
Population served with household connection		
Population without household connection but with reasonable access to a public water point		
Total population served		
Total population unserved		
Total population		0
Population with safe drinking water		

Census

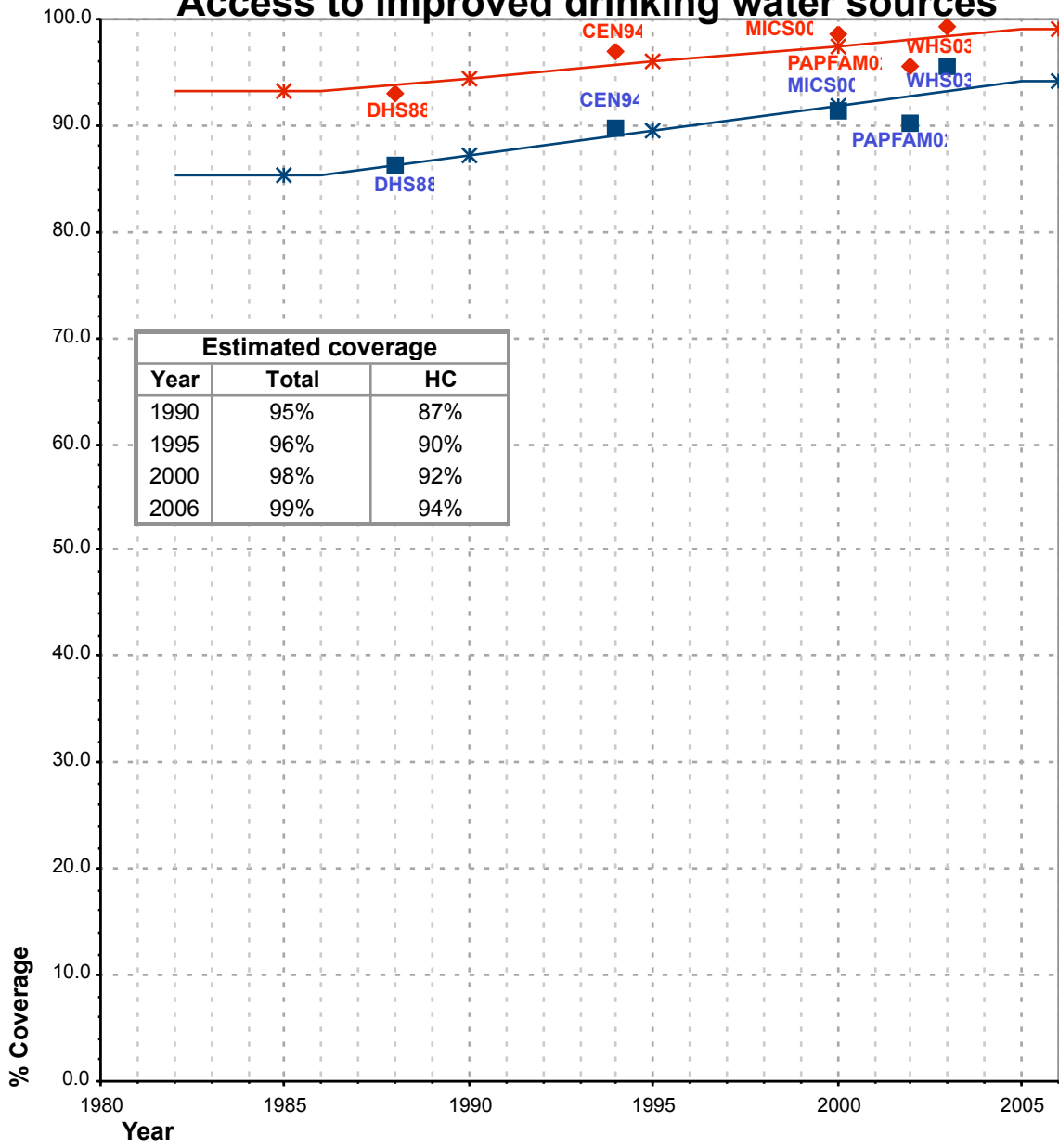
Tunisia	1994		
Water	Urban	Rural	Total
Eau courante	94.3	24.1	69.1
Source privee	3	30.1	13
Source publique amenegee et non amenegee	2.3	45.8	17.9
Non declarees	0	0	0
TOTAL	100	100	100
50% "Source"	2.7	38.0	15.5
Improved water source	97%	62%	85%
Estimated House connections	90%	26%	

Source: Recensement general de la population et de 'habitat, 1994. Menages et conditions d'habitat. Institut National de la Statistique. (CRING 1996)

* In absence of any information on proportion of 'source' that is protected it is assumed in this model that 50% of all 'sources' are protected and therefore provide safe drinking water.

Tunisia			DRINKING WATER							
			URBAN				RURAL			
			HC		Total		HC		Total	
Source	Code	Year	Used for estimates	Not used for estimates	Used for estimates	Not used for estimates	Used for estimates	Not used for estimates	Used for estimates	Not used for estimates
The International Drinking Water Supply and Sanitation Decade. Review of National Baseline Data (as at December 1980). WHO 1984	WHO80	1980		71.0		100.0				17.0
The International Drinking Water Supply and Sanitation Decade. Review of National Progress (as at December 1983). WHO 1986.	WHO83	1983		92.0		100.0				
The International Drinking Water Supply and Sanitation Decade. Review of Mid-Decade Progress (as at December 1985). WHO 1987.	WHO85	1985		91.0		100.0				31.0
Tunisian Demographic and Health Survey 1988.	DHS88	1988	86.2		93.1		26.2		62.3	
The International Drinking Water Supply and Sanitation Decade. Review of National Progress (as at December 1988). WHO 1990.	WHO88	1988		86.0		100.0				31.0
Water Supply and Sanitation Sector Monitoring Report 1993 (Sector Status as of 31 December 1991)	JMP93	1991				100.0				
Census 1994, [No breakdown available]	CEN94	1994	89.7		97.0		26.1		62.1	
Water Supply and Sanitation Sector Monitoring Report - 1996. Sector Status as of 31 December 1994. WHO/UNICEF 1996.	JMP96	1993				100.0				
Global Water Supply and Sanitation Assessment 2000. Water Supply and Sanitation Sector Questionnaire - 1999. (Form 6 sent to WHO)	JMP99	1999								
Tunisia, Multi Indicator Cluster Survey 2000	MICS00	2000	91.3		98.7		33.2		78.9	
World Health Survey, WHO, 2003.	WHS03	2003	95.6		99.4		36.6		81.9	
Pan Arab Project for Family Health, 2002	PAPFAM02	2002	90.2		95.7		39.8		78.5	

Tunisia - urban - Access to improved drinking water sources



Estimated coverage		
Year	Total	HC
1990	95%	87%
1995	96%	90%
2000	98%	92%
2006	99%	94%

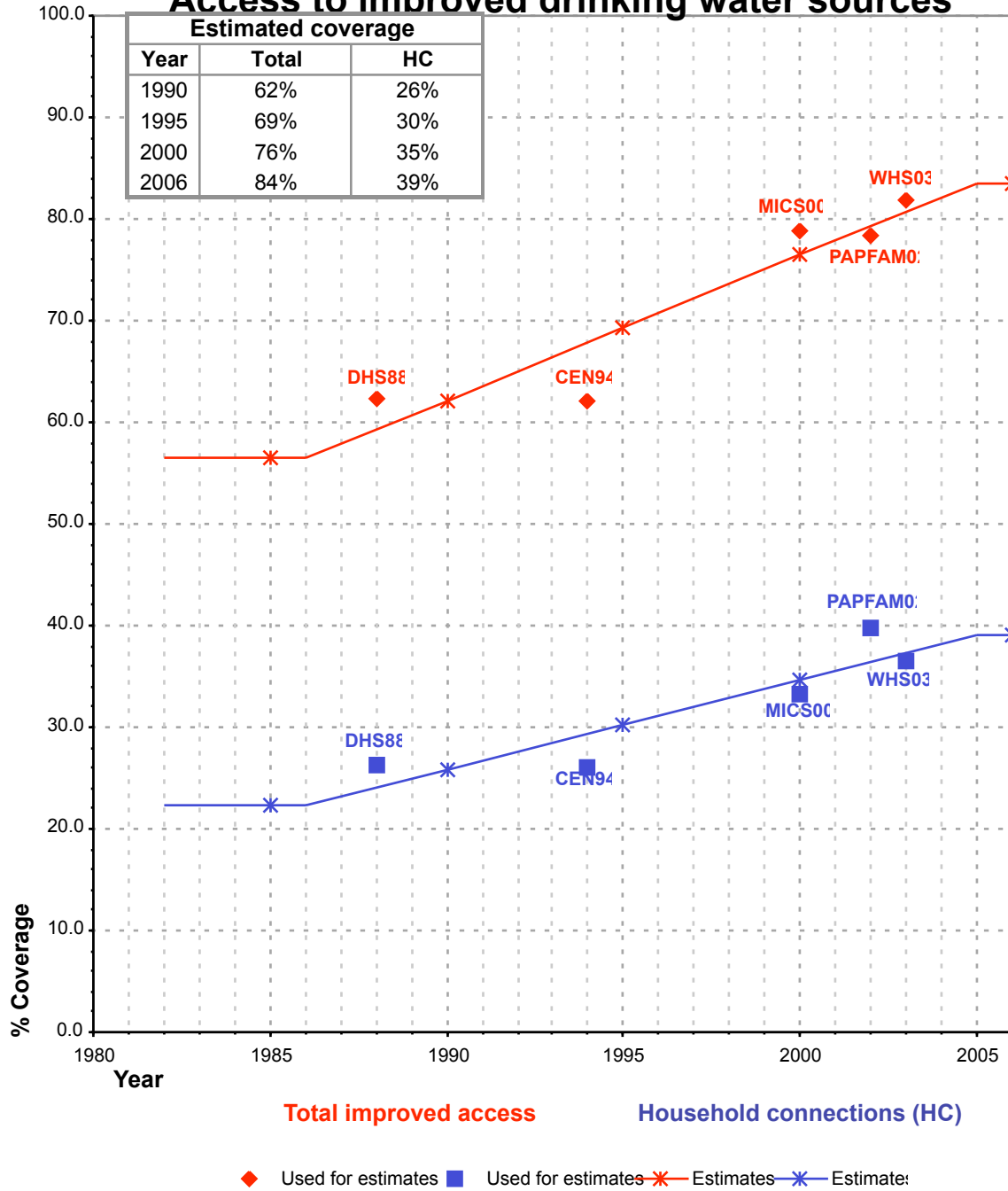
Total improved access

Household connections (HC)

◆ Used for estimates ■ Used for estimates * Estimates * Estimate

Total access :
Household connections :

Tunisia - rural - Access to improved drinking water sources



Total access :
Household connections :