



WHO / UNICEF

**Joint Monitoring Programme
for Water Supply and Sanitation**

Coverage Estimates
Improved Sanitation

Updated in July 2008

Tunisia

DHS			1988		
SANITATION	Urban	Rural			
WC Indoors	87.6	32.5			
Private Outdoor WC	8.2	12.3			
Shared Outdoor WC	1.2	2.3			
No Facilities	2.9	52.4			
Other	0.1	0.4			
TOTAL	100	100			
Estimates sewerage connections based on WHS03	71.7	6.1			
Use of an improved sanitation facility	97%	47%			
% Sewerage connections	72%	6%			

Source: Domestic and Household Survey, Tunisia, 1988.

MICS			2000		
SANITATION	Urban	Rural			
Egouts (sewerage)	8'254	29'849			
Fosse septique (septic tank)	23'609	22'682			
Rigole (open ditch)	3'251	16'699			
Aucune installation (no facility)	977	12'422			
Manquant (missing)	2'737	1'631			
Total answers	8'828	83'930			

Use of an improved sanitation facility	92%	63%
% Sewerage connections	66%	36%

Source: Multiple Indicator Cluster Survey, 2000

Urban and Rural Sanitation - Tunisia

Survey

PAPFAM		2002	
SANITATION	Urban	Rural	
Toilettes reliées	78.1	2.1	
Toilettes non-reliées	19.9	53.5	
Fosse	1.4	14.8	
Toilettes publiques	0.0	0.0	
Seau	0.1	0.1	
En plein air	0.1	26.8	
Autre	0.3	2.0	
ND	0.0	0.7	
TOTAL	99.9	100.0	
% of fosse considered improved, based on WHS03	1.3	12.8	
Use of an improved sanitation facility	99%	68%	
% Sewerage connections	78%	2%	

Source: Pan Arab Project for Family Health, 2002

WHS		2003	
Proportion shared improved facilities/all improved facilities		0.02	0.11
SANITATION	Urban	Rural	
Private domestic connection to sewage system	78.0	8.9	
Shared domestic connection to sewage system	1.0	0.0	
Private flush to septic tank	16.9	33.5	
Shared flush to septic tank	0.6	4.6	
Private pour flush latrine	2.0	9.4	
Shared pour flush latrine	0.1	0.9	
Private covered dry latrine (with privacy)	0.5	9.4	
Shared covered dry latrine (with privacy)	0.1	2.1	
Uncovered dry latrine (without privacy)	0.2	3.5	
Bucket latrine (where fresh excreta are manually removed)	0.0	4.5	
No facilities (open defecation)	0.2	20.7	
Other	0.5	2.7	
TOTAL	100.0	100.0	
Ratio sewerage of sewerage and septic tank	0.82	0.19	
Ratio improved latrines/all latrines	0.94	0.86	
Use of an improved sanitation facility	99%	69%	
% Sewerage connections	78%	9%	

Source: World Health Survey, WHO, 2003.

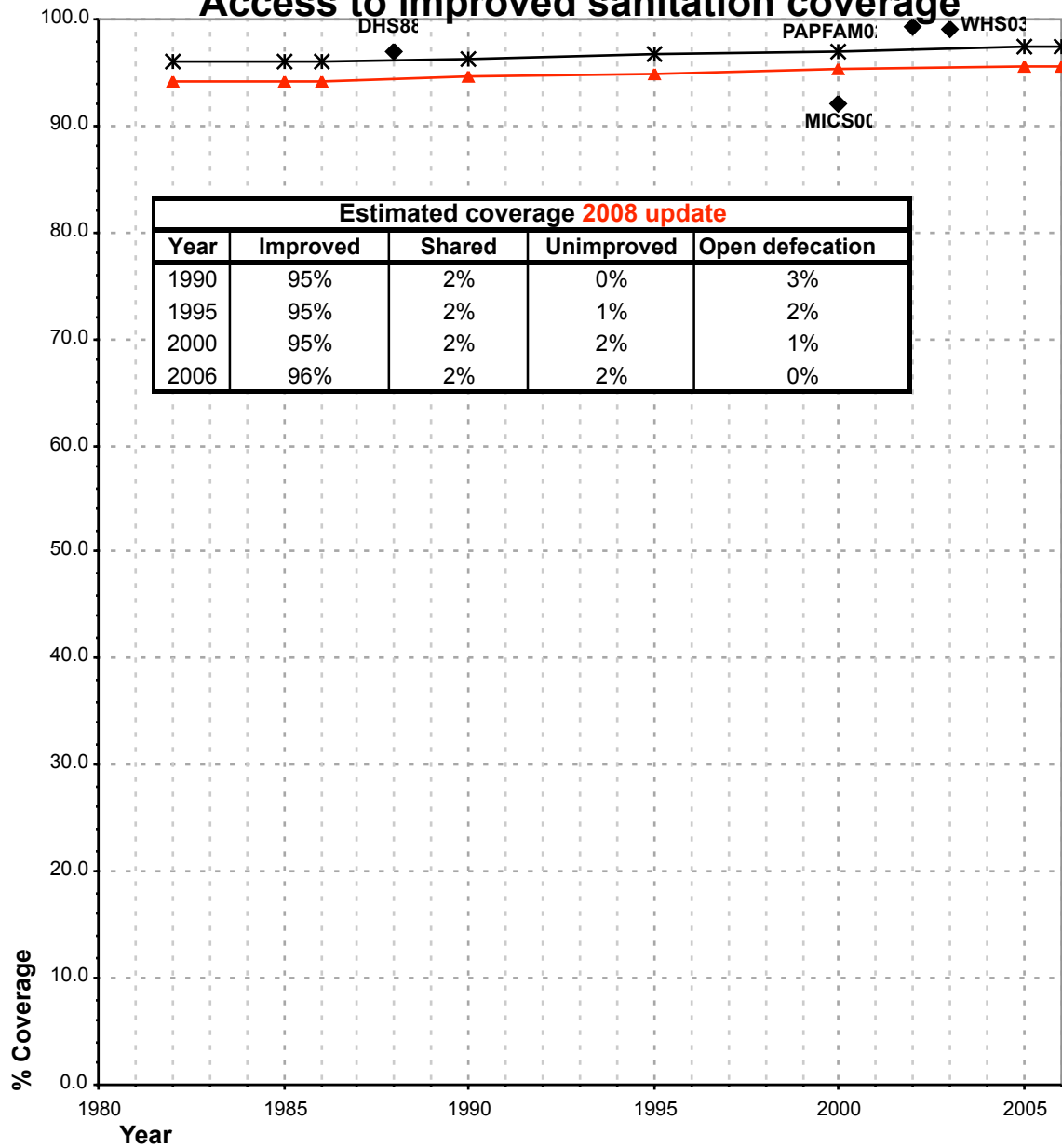
Census

Tunisia		1994		
Sanitation	Urban	Rural	Total	
un cabinet	96.4	51.5	80.3	
No further breakdown available				
TOTAL	96	52	80	
Use of an improved sanitation facility				
% Sewerage connections				

Source: Recensement general de la population et de 'habitat,

Tunisia			SANITATION								OPEN DEFECACTION				
			URBAN				RURAL								
			Source	Code	Year	HC		Total		HC		Total		Urban	
Used for estimates	Not used for estimates	Used for estimates				Not used for estimates	Used for estimates	Not used for estimates	Used for estimates	Not used for estimates	Used for estimates	Not used for estimates	Used for estimates	Not used for estimates	
The International Drinking Water Supply and Sanitation Decade. Review of National Baseline Data (as at December 1980). WHO 1984	WHO80	1980				100.0									
The International Drinking Water Supply and Sanitation Decade. Review of National Progress (as at December 1983). WHO 1986.	WHO83	1983													
The International Drinking Water Supply and Sanitation Decade. Review of Mid-Decade Progress (as at December 1985). WHO 1987.	WHO85	1985				84.0				16.0					
Tunisian Demographic and Health Survey 1988.	DHS88	1988	71.7		97.0		6.1		47.1		2.9		52.4		
The International Drinking Water Supply and Sanitation Decade. Review of National Progress (as at December 1988). WHO 1990.	WHO88	1988				71.0				15.0					
Water Supply and Sanitation Sector Monitoring Report 1993 (Sector Status as of 31 December 1991)	JMP93	1991				98.0									
Census 1994, [No breakdown available]	CEN94	1994		0.0		91.6		0.0		37.2					
Water Supply and Sanitation Sector Monitoring Report - 1996. Sector Status as of 31 December 1994. WHO/UNICEF 1996.	JMP96	1993				100.0									
Global Water Supply and Sanitation Assessment 2000. Water Supply and Sanitation Sector Questionnaire - 1999. (Form 6 sent to WHO)	JMP99	1999									no data sent				
Tunisia, Multi Indicator Cluster Survey 2000	MICS00	2000	65.6		92.2			33.8	62.6		1.1		14.8		
World Health Survey, WHO, 2003.	WHS03	2003	78.0		99.1		8.9		68.7		0.2		20.7		
Pan Arab Project for Family Health, 2002	PAPFAM02	2002	78.2		99.3		2.1		68.4		0.1		26.8		

Tunisia - urban - Access to improved sanitation coverage



Improved plus shared

Improved

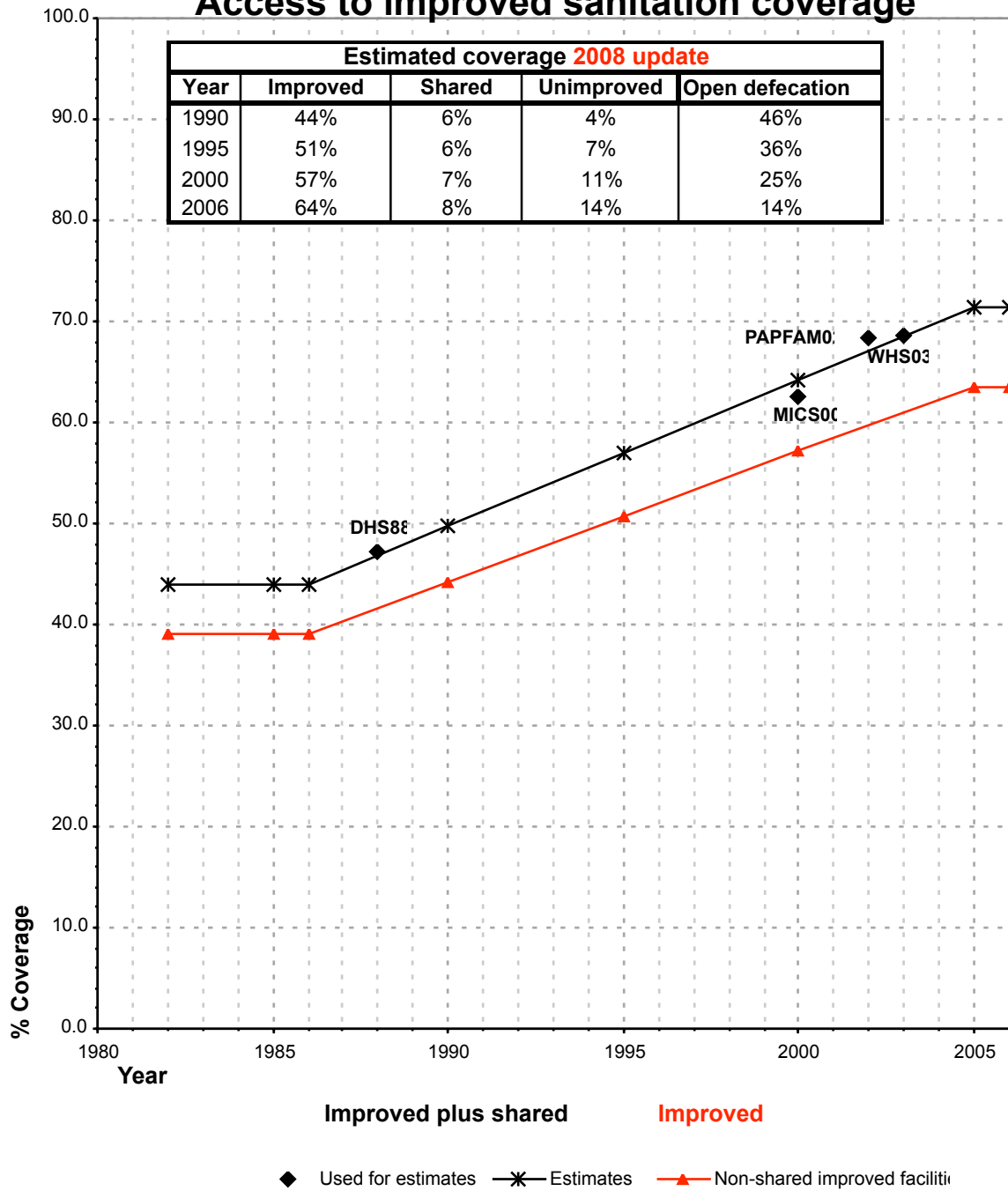
◆ Used for estimates * Estimates ▲ JMP 2008 estimate

Total access : CEN94 has not been used because the breakdown of the variable is unclear.

Shared facilities :

The proportion of the population using a shared improved sanitation facility is based on th

Tunisia - rural - Access to improved sanitation coverage



Total access : CEN94 has not been used because the breakdown of the variable is unclear.

Shared facilities :
 The proportion of the population using a shared improved sanitation facility is based on the