



WHO / UNICEF

**Joint Monitoring Programme
for Water Supply and Sanitation**

**Coverage Estimates
Improved Sanitation**

Updated in July 2008

Chad

Chad

Survey

DHS	1997	
	Urban	Rural
SANITATION		
WC	1	0
Simple Pit	50.4	10.6
Improved Pit	27.3	0.6
No Facilities/Nature	21.1	88.5
Other/Not Defined	0.2	0.3
TOTAL	100	100
Estimated improved latrines based on WHS 03	36.5	5.4
% Use of an improved sanitation facility	38%	5%

Source: Chad Demographic and Health Survey 1997.

MICS	2000	
	Urban	Rural
SANITATION		
Toilette/chasse d'eau	0.9	0.0
Latrine à évacuation	3.8	0.0
Latrine à ventilation	1.3	0.0
Latrine traditionnelle	66.6	9.4
Trou ouvert	10.0	2.1
Manquant	0.2	0.1
Pas de toilette/nature	17.3	88.4
Total	100.1	100.0
Estimated improved latrines based on WHS 03	33.7	4.6
% Use of an improved sanitation facility	35%	5%
% Sewerage connections		

Source: Enquête de grappes à indicateurs multiples, République du Chad, 2000

WHS		2003	
Proportion shared improved facilities/all improved facilities		0.45	0.53
SANITATION		Urban	Rural
Private domestic connection to sewage system		2.8	0.3
Shared domestic connection to sewage system		0.8	0.4
Private flush to septic tank		0.7	0.3
Shared flush to septic tank		2.0	1.1
Private pour flush latrine		0.7	0.2
Shared pour flush latrine		0.9	0.2
Private covered dry latrine (with privacy)		18.9	3.4
Shared covered dry latrine (with privacy)		15.0	3.1
Uncovered dry latrine (without privacy)		28.3	6.3
Bucket latrine (where fresh excreta are manually removed)		11.6	1.2
No facilities (open defecation)		14.7	82.1
Other		3.8	1.2
TOTAL		100.0	100.0
Ratio improved latrines/all latrines		0.47	0.48
% Use of an improved sanitation facility		42%	9%
% Sewerage connections		3%	0%

Source: World Health Survey, WHO, 2003.

DHS		2004	
SANITATION		Urban	Rural
Chasse d'eau pour le ménage seul		0.8	0
Chasse d'eau en commun		4.9	0.4
Fosse/latrine améliorée		11.4	0.1
Fosse/latrine rudimentaire		64.7	11.1
Pas de toilette/nature		18	88.1
Autre/ND		0.3	0.2
TOTAL		100	100
Estimated improved latrines based on WHS 03		35.8	5.4
% Use of an improved sanitation facility		41%	6%
% Sewerage connections			

Source: Tchad Demographic and Health Survey 2004.

Census

Census	1993	
(Population in thousands)		
SANITATION	Urban	Rural
WC	31.80	14.60
Pit	943.00	321.40
Nature	349.70	4'533.00
Total population (1993)	1'324.50	4'869.00
Estimated improved latrines based on WHS 03	444	156
% Use of an improved sanitation facility	36%	3%

Estimate

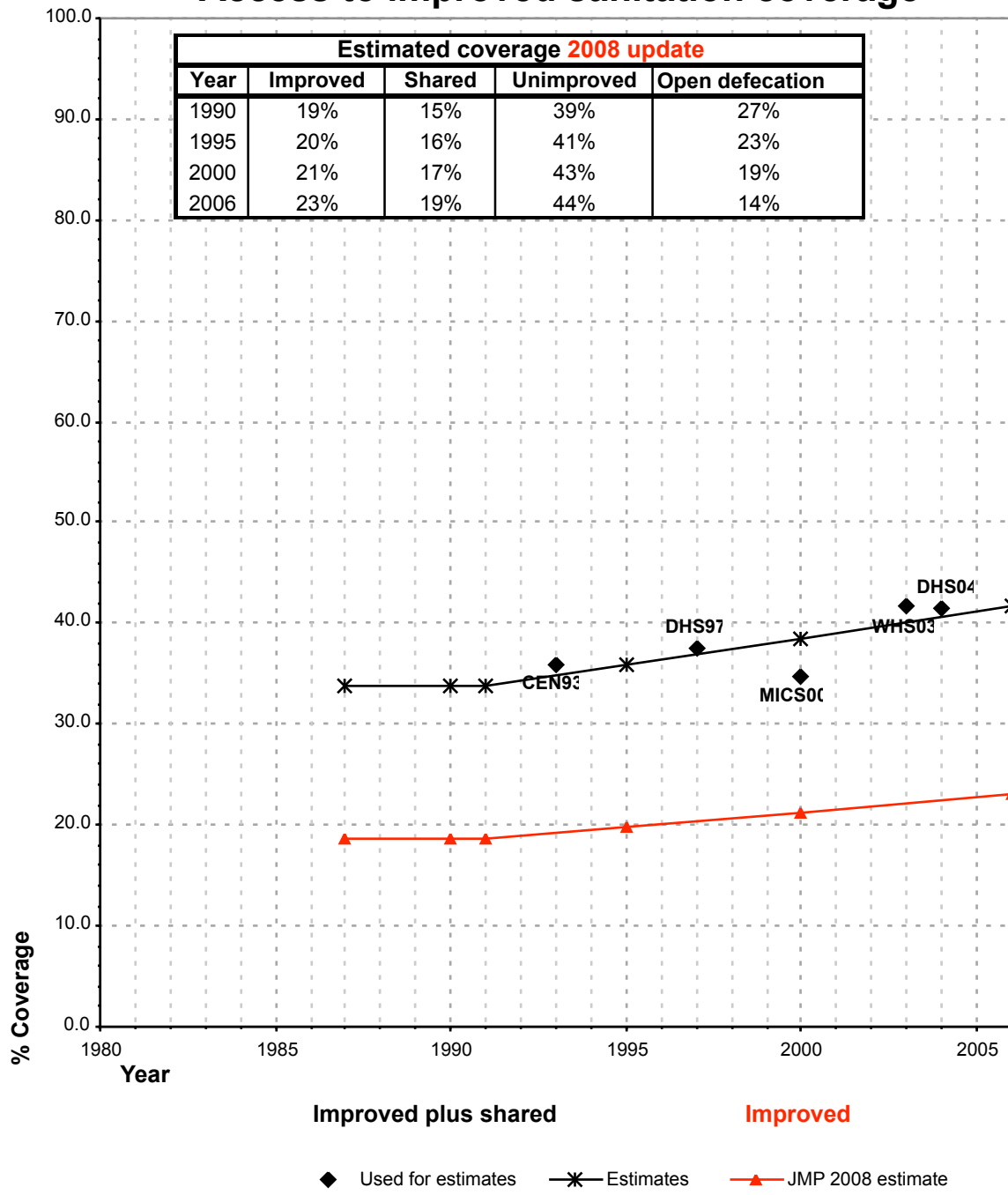
FORM6/WHO	1999
(Population in thousands)	
SANITATION	Urban
Population served with household connections to conventional sewers	0.00
Population without household connections but served with adequate, private or shared on-site system	31.80
Total population served	31.80
Total population unserved	1'292.70
Total population	1'324.50
% Use of an improved sanitation facility	2%
% Sewerage connections	0%

Source: Global Water Supply and Sanitation Assessment 2000. Water Supply and Sanitation Sector Questionnaire - 1999. (Form 6 sent to WHO)

Sanitation Assessment 2000. Water Supply and Sanitation Sector

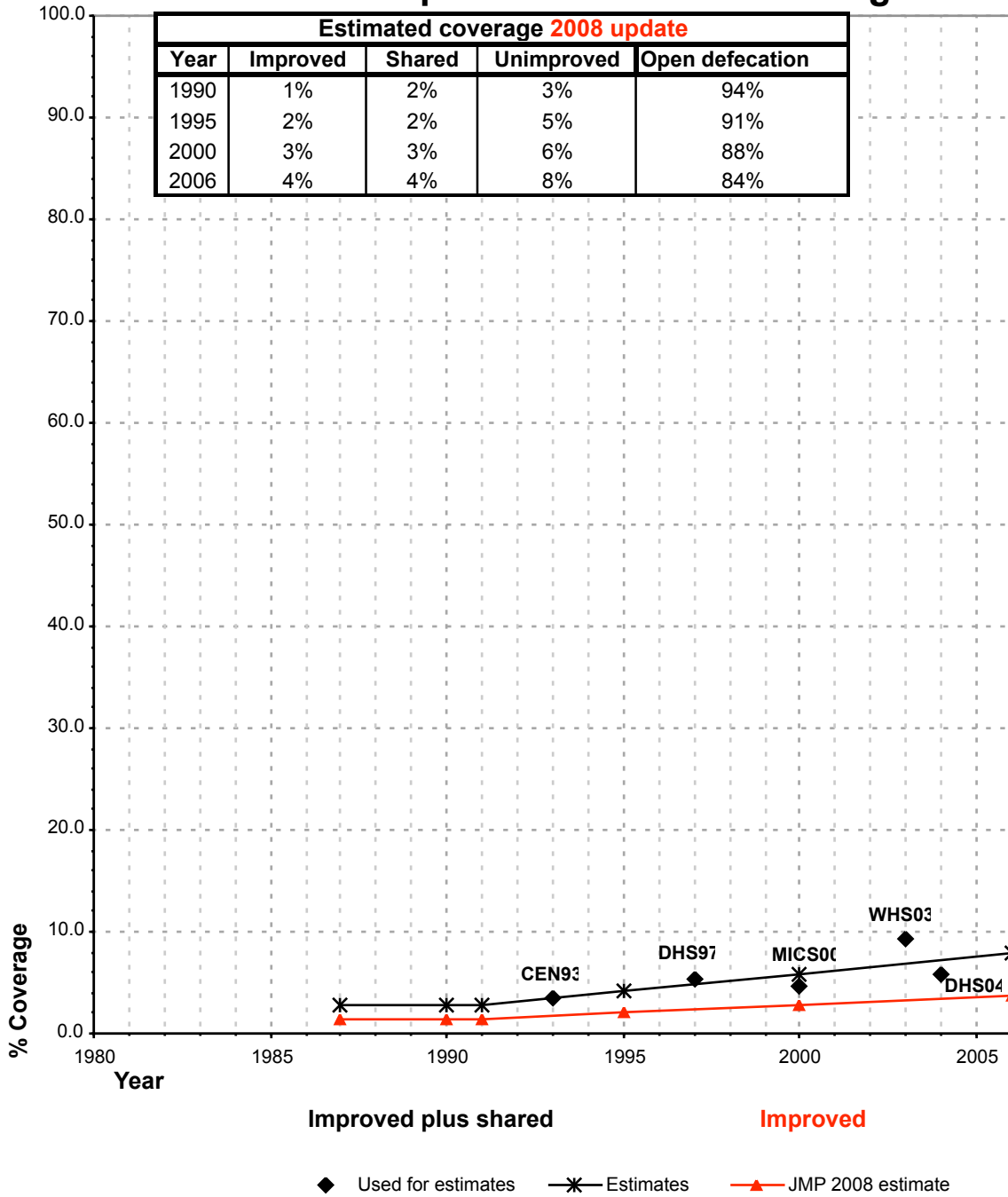
Chad			SANITATION								OPEN DEFECACTION			
			URBAN				RURAL							
			HC		Total		HC		Total		Urban		Rural	
Source	Code	Year	Used for estimates	Not used for estimates	Used for estimates	Not used for estimates	Used for estimates	Not used for estimates	Used for estimates	Not used for estimates	Used for estimates	Not used for estimates	Used for estimates	Not used for estimates
Water Supply and Sanitation Sector Monitoring Report 1993 (Sector Status as of 31 December 1991)	JMP93	1991												
Chad National Census, 1993 as recorded on Form 4 of the Global Water Supply and Sanitation Assessment 2000. Water Supply and Sanitation Sector Questionnaire - 1999.	CEN93	1993			35.9				3.5			26.4		93.1
Water Supply and Sanitation Sector Monitoring Report - 1996. Sector Status as of 31 December 1994. WHO/UNICEF 1996.	JMP96	1994				59.0								
Chad Demographic and Health Survey 1997.	DHS97	1997			37.5				5.4			21.1		88.5
Global Water Supply and Sanitation Assessment 2000. Water Supply and Sanitation Sector Questionnaire - 1999. (Form 6 sent to WHO)	JMP99	1999		0.0		2.0		0.0		0.0				
Enquete de grappes a indicateurs multiples, Republique du Chad, 2000	MICS00	2000			34.6				4.6			17.3		88.4
World Health Survey, WHO, 2003.	WHO03	2003	2.8		41.7		0.3		9.2			14.7		82.1
Tchad Demographic and Health Survey 2004.	DHS04	2004			41.5				5.8			18.0		88.1

Chad - urban - Access to improved sanitation coverage



Shared facilities :
 The proportion of the population using a shared improved sanitation facility is based on the WHS03

Chad - rural - Access to improved sanitation coverage



Shared facilities :
 The proportion of the population using a shared improved sanitation facility is based on the WHS03