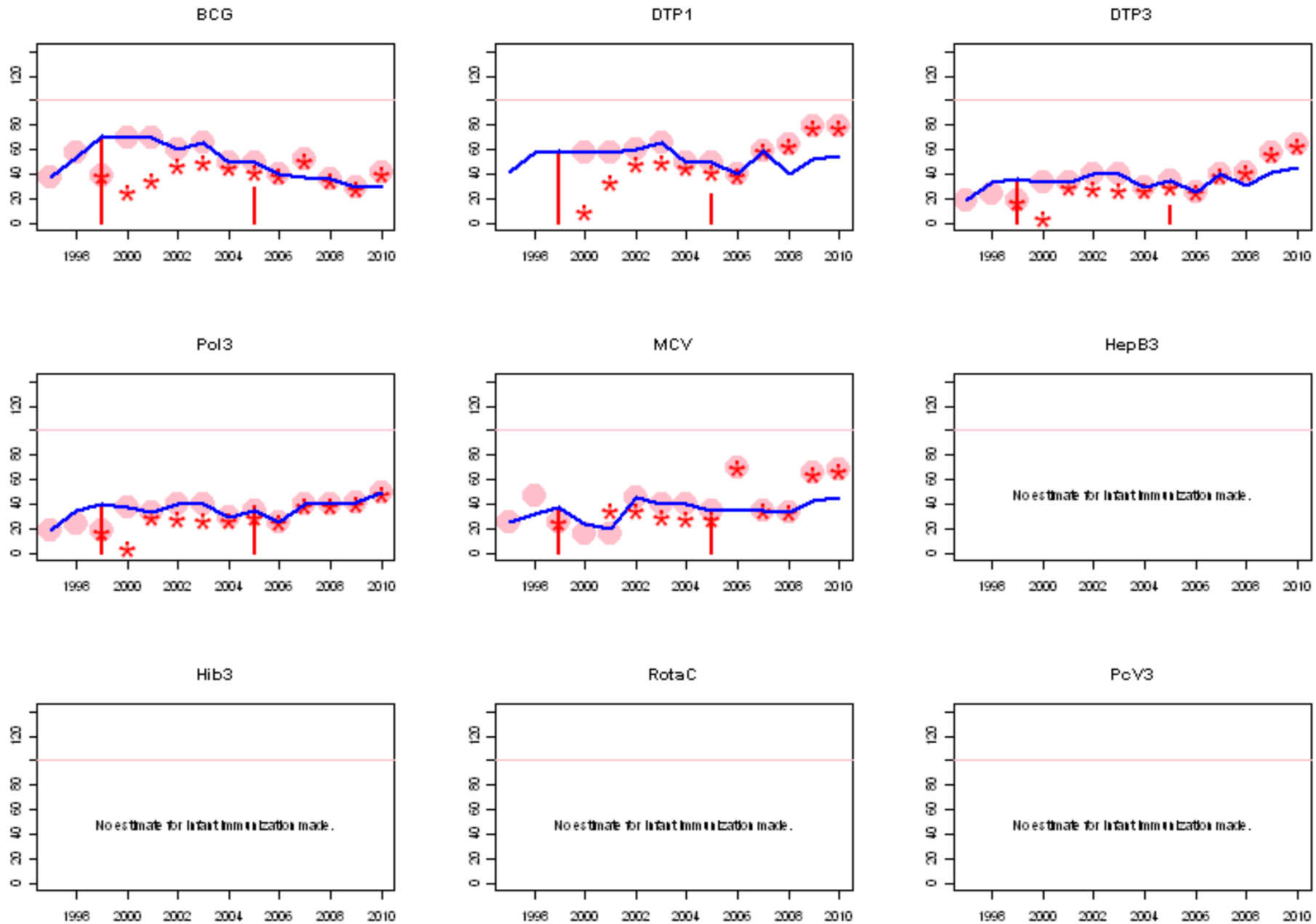
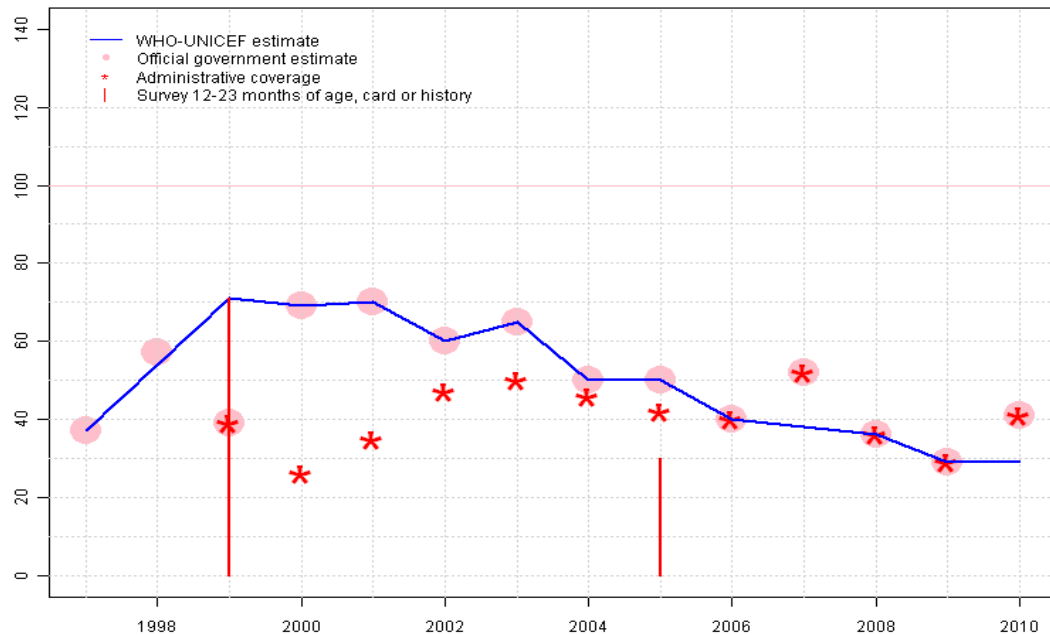


Somalia. WHO and UNICEF estimates of immunization coverage: 2010 revision



Somalia - BCG

SOM - BCG



| | 1997 | 1998 | 1999 | 2000 | 2001 | 2002 | 2003 | 2004 | 2005 | 2006 | 2007 | 2008 | 2009 | 2010 |
|----------------|------|------|------|------|------|------|------|------|------|------|------|------|------|------|
| Estimate | 37 | 54 | 71 | 69 | 70 | 60 | 65 | 50 | 50 | 40 | 38 | 36 | 29 | 29 |
| Official | 37 | 57 | 39 | 69 | 70 | 60 | 65 | 50 | 50 | 40 | 52 | 36 | 29 | 41 |
| Administrative | NA | NA | 39 | 26 | 35 | 47 | 50 | 46 | 42 | 40 | 52 | 36 | 29 | 41 |
| Survey | NA | NA | 71 | NA | NA | NA | NA | NA | 30 | NA | NA | NA | NA | NA |

Description:

1997: Legacy estimate.

1998: Estimate based on interpolation between 1997 and 1999. Reported data not accepted due to an increase from 37 percent to 57 percent with a subsequent decrease to 39 percent. Current estimate of 54 percent changed from previous revision value of 51 percent.

1999: Estimate is based on survey results. Reported data not accepted due to a decline from 57 percent to 39 percent with a subsequent increase to 69 percent.

2000: Estimate is based on the reported data.

2001: Estimate based on reported data.

2002: Estimate based on reported data.

2003: Estimate based on reported data.

2004: Estimate based on reported data.

2005: Estimate based on reported data. Survey not accepted. Ninety-two percent of survey results were based on maternal recall.

2006: Estimate based on reported data. Current estimate of 40 percent changed from previous revision value of 50 percent.

2007: Estimate based on interpolation between 2006 and 2008. Reported data not accepted due to an increase from 40 percent to 52 percent with a subsequent decrease to 36 percent. Current estimate of 38 percent changed from previous revision value of 52 percent.

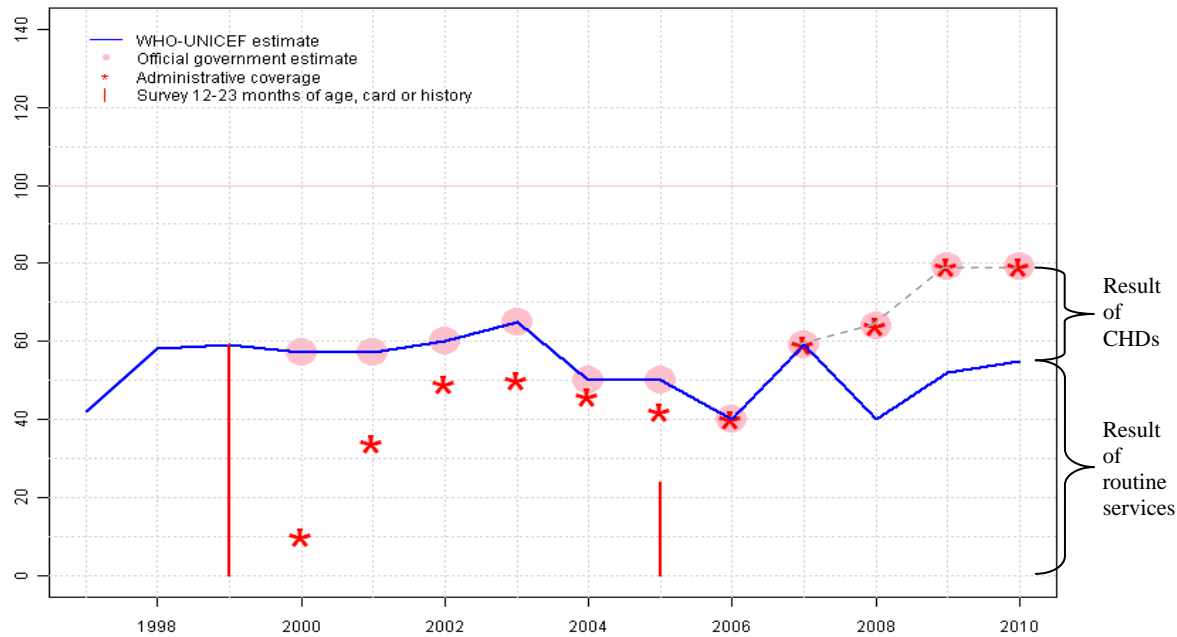
2008: Estimate based on reported data. Two months of vaccine stock-out was reported for January through February 2008.

2009: Estimate based on reported data. Beginning in 2009, to complement the currently weak routine immunization service, Somalia also offers selected vaccines through semi-annual Child Health Days (CHDs); BCG, however, was not offered in CHDs. Reported data and WHO and UNICEF estimate includes only coverage reached through routine services.

2010: Estimate based on extrapolation from 2009 value of 29 percent. Reported data not accepted due to a change from 29 level to 41 percent. Beginning in 2009, to complement the currently weak routine immunization service, Somalia also offers selected vaccines through semi-annual Child Health Days (CHDs); BCG, however, was not offered in CHDs. Reported data and WHO and UNICEF estimate includes only coverage reached through routine services.

Somalia - DTP1

SOM - DTP1



| | 1997 | 1998 | 1999 | 2000 | 2001 | 2002 | 2003 | 2004 | 2005 | 2006 | 2007 | 2008 | 2009 | 2010 |
|----------------|------|------|------|------|------|------|------|------|------|------|------|------|------|------|
| Estimate | 42 | 58 | 59 | 57 | 57 | 60 | 65 | 50 | 50 | 40 | 59 | 40 | 52 | 55 |
| Official | NA | NA | NA | 57 | 57 | 60 | 65 | 50 | 50 | 40 | 59 | 64 | 79 | 79 |
| Administrative | NA | NA | NA | 10 | 34 | 49 | 50 | 46 | 42 | 40 | 59 | 64 | 79 | 79 |
| Survey | NA | NA | 59 | NA | NA | NA | NA | NA | 24 | NA | NA | NA | NA | NA |

Description:

1997: Legacy estimate.

1998: No DTP1 data. Estimate based on DTP3 coverage of 33. Current estimate of 58 percent changed from previous revision value of 51 percent.

1999: Estimate is based on survey results.

2000: Estimate is based on the reported data.

2001: Estimate based on reported data.

2002: Estimate based on reported data.

2003: Estimate based on reported data.

2004: Estimate based on reported data.

2005: Estimate based on reported data. Survey not accepted. Ninety-two percent of survey results were based on maternal recall.

2006: Estimate based on reported data.

2007: The increase in coverage is partially attributable to a revision in the size of the target population. Current estimate of 59 percent changed from previous revision value of 58 percent.

2008: WHO and UNICEF estimate based on data reported in 2009 Joint Reporting Form. Decline may be the result of two months reported vaccine stock-out in January through February 2008 and the inclusion of immunizations delivered through the December 2008 Child Health Day.

2009: Beginning in 2008, to complement weak routine immunization services, Somalia offers DTP to children less than one year of age through semi-annual Child Health Days (CHDs). Coverage reported by the Government of Somalia includes immunizations delivered through routine services as well as through CHDs. Because reported coverage is based only on documented immunizations some DTP1 doses may be second or third doses. While Somalia reports routine doses of DTP disaggregated by routine services and CHDs, no data were provided for the number of DTP1 doses delivered through routine services. The WHO and UNICEF estimate is based on the observed dropout between DTP1 and DTP3 in 2010 where data from both DTP1 and DTP3 were available. There is, however, considerable uncertainty of at least plus or minus 10 percentage points regarding coverage estimates due to uncertainty in the number of children in the target population, the most recent Somali census was conducted in 1987, and the difficulty of coordinating recording and reporting between CHD activities and routine services. It is important to note that immunizations provided through CHDs provide significant levels of protection against vaccine preventable diseases and are an important strategy in reaching children in this still fragile state. Current estimate of 52 percent changed from previous revision value of 40 percent.

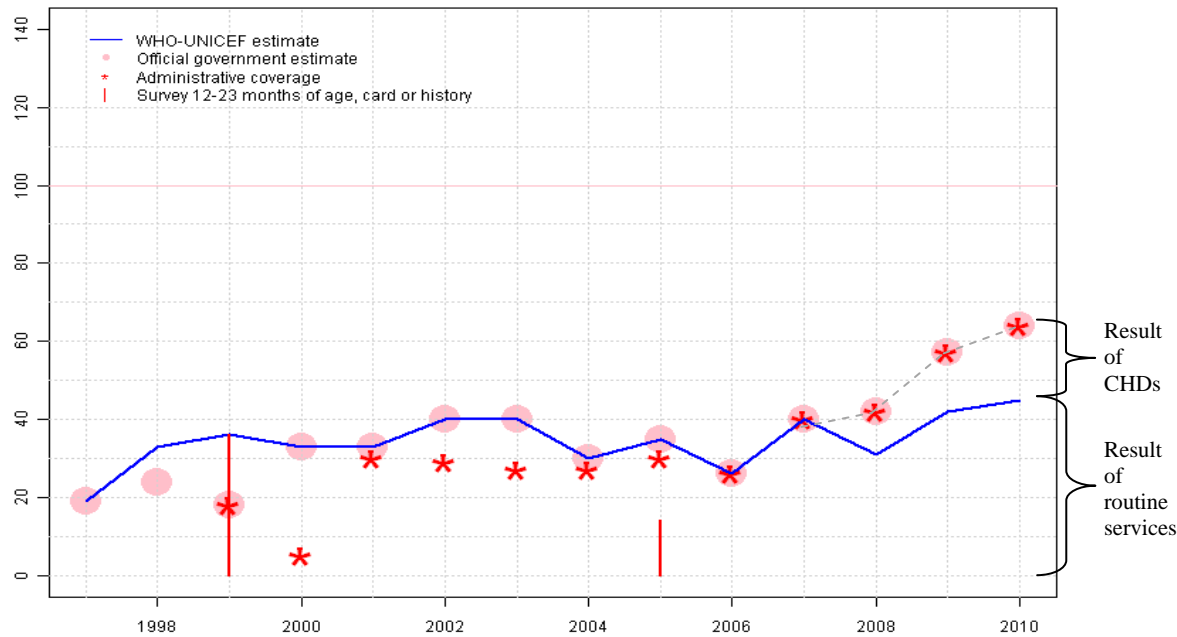
2010: Beginning in 2008, to complement weak routine immunization services, Somalia offers DTP to children less than one year of age through semi-annual

Somalia - DTP1

Child Health Days (CHDs). Coverage reported by the Government of Somalia includes immunizations delivered through routine services as well as through CHDs. Because reported coverage is based only on documented immunizations some DTP1 doses may be second or third doses. Somalia reports routine doses of DTP disaggregated by routine services and CHDs. The WHO and UNICEF estimate is based on data provided by the Government of Somalia for DTP3 routine doses delivered through routine services. There is, however, considerable uncertainty of at least plus or minus 10 percentage points regarding coverage estimates due to uncertainty in the number of children in the target population, the most recent Somali census was conducted in 1987, and the difficulty of coordinating recording and reporting between CHD activities and routine services. It is important to note that immunizations provided through CHDs provide significant levels of protection against vaccine preventable diseases and are an important strategy in reaching children in this still fragile state.

Somalia - DTP3

SOM - DTP3



| | 1997 | 1998 | 1999 | 2000 | 2001 | 2002 | 2003 | 2004 | 2005 | 2006 | 2007 | 2008 | 2009 | 2010 |
|----------------|------|------|------|------|------|------|------|------|------|------|------|------|------|------|
| Estimate | 19 | 33 | 36 | 33 | 33 | 40 | 40 | 30 | 35 | 26 | 40 | 31 | 42 | 45 |
| Official | 19 | 24 | 18 | 33 | 33 | 40 | 40 | 30 | 35 | 26 | 40 | 42 | 57 | 64 |
| Administrative | NA | NA | 18 | 5 | 30 | 29 | 27 | 27 | 30 | 26 | 40 | 42 | 57 | 64 |
| Survey | NA | NA | 36 | NA | NA | NA | NA | NA | 14 | NA | NA | NA | NA | NA |

Description:

1997: Legacy estimate.

1998: Reported data calibrated to 1997 and 1999 levels. Current estimate of 33 percent changed from previous revision value of 28 percent.

1999: Estimate based on survey results. 36 percent survey results does not support reported data of 18 percent. Survey results of 36 percent modified for recall bias to 36 percent based on 1st dose card or history coverage of 59 percent, 1st dose card only coverage of 59 percent and 3d dose card only coverage of 36 percent.

2000: Estimate is based on the reported data.

2001: Estimate based on reported data.

2002: Estimate based on reported data.

2003: Estimate based on reported data.

2004: Estimate based on reported data.

2005: Estimate based on reported data. Survey not accepted. Ninety-two percent of survey results were based on maternal recall.

2006: Estimate based on reported data. Current estimate of 26 percent changed from previous revision value of 35 percent.

2007: Estimate based on reported data. Current estimate of 40 percent changed from previous revision value of 39 percent.

2008: WHO and UNICEF estimate based on data reported in 2009 Joint Reporting Form. Decline may be the result of two months reported vaccine stock-out in January through February 2008 and the inclusion of immunizations delivered through the December 2008 Child Health Day.

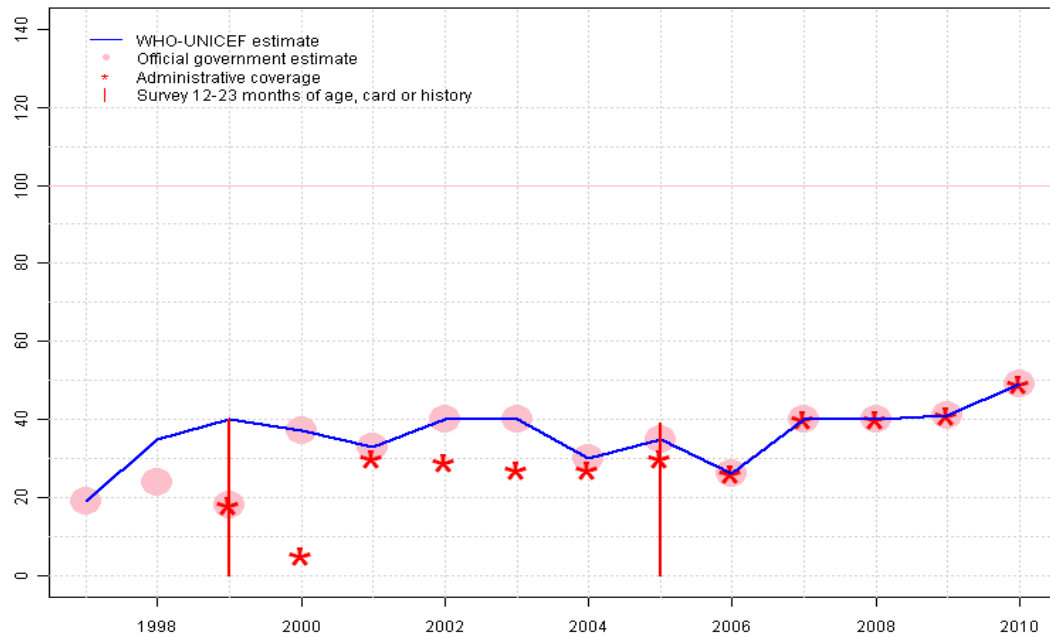
2009: Beginning in 2008, to complement weak routine immunization services, Somalia offers DTP to children less than one year of age through semi-annual Child Health Days (CHDs). Coverage reported by the Government of Somalia includes immunizations delivered through routine services as well as through CHDs. Because reported coverage is based only on documented immunizations some DTP1 doses may be second or third doses. Somalia reports routine doses of DTP disaggregated by routine services and CHDs. The WHO and UNICEF estimate is based on data provided by the Government of Somalia for DTP3 routine doses delivered through routine services. There is, however, considerable uncertainty of at least plus or minus 10 percentage points regarding coverage estimates due to uncertainty in the number of children in the target population, the most recent Somali census was conducted in 1987, and the difficulty of coordinating recording and reporting between CHD activities and routine services. It is important to note that immunizations provided through CHDs provide significant levels of protection against vaccine preventable diseases and are an important strategy in reaching children in this still fragile state. Current estimate of 42 percent changed from previous revision value of 31 percent.

Somalia - DTP3

2010: Beginning in 2008, to complement weak routine immunization services, Somalia offers DTP to children less than one year of age through semi-annual Child Health Days (CHDs). Coverage reported by the Government of Somalia includes immunizations delivered through routine services as well as through CHDs. Because reported coverage is based only on documented immunizations some DTP1 doses may be second or third doses. Somalia reports routine doses of DTP disaggregated by routine services and CHDs. The WHO and UNICEF estimate is based on data provided by the Government of Somalia for DTP3 routine doses delivered through routine services. There is, however, considerable uncertainty of at least plus or minus 10 percentage points regarding coverage estimates due to uncertainty in the number of children in the target population, the most recent Somali census was conducted in 1987, and the difficulty of coordinating recording and reporting between CHD activities and routine services. It is important to note that immunizations provided through CHDs provide significant levels of protection against vaccine preventable diseases and are an important strategy in reaching children in this still fragile state.

Somalia - Pol3

SOM - Pol3



| | 1997 | 1998 | 1999 | 2000 | 2001 | 2002 | 2003 | 2004 | 2005 | 2006 | 2007 | 2008 | 2009 | 2010 |
|----------------|------|------|------|------|------|------|------|------|------|------|------|------|------|------|
| Estimate | 19 | 35 | 40 | 37 | 33 | 40 | 40 | 30 | 35 | 26 | 40 | 40 | 41 | 49 |
| Official | 19 | 24 | 18 | 37 | 33 | 40 | 40 | 30 | 35 | 26 | 40 | 40 | 41 | 49 |
| Administrative | NA | NA | 18 | 5 | 30 | 29 | 27 | 27 | 30 | 26 | 40 | 40 | 41 | 49 |
| Survey | NA | NA | 40 | NA | NA | NA | NA | NA | 39 | NA | NA | NA | NA | NA |

Description:

1997: Legacy estimate.

1998: Reported data calibrated to 1997 and 1999 levels. Current estimate of 35 percent changed from previous revision value of 30 percent.

1999: Estimate based on survey results. 40 percent survey results does not support reported data of 18 percent. Survey results of 40 percent modified for recall bias to 40 percent based on 1st dose card or history coverage of 60 percent, 1st dose card only coverage of 60 percent and 3d dose card only coverage of 40 percent.

2000: Estimate is based on the reported data.

2001: Estimate based on reported data.

2002: Estimate based on reported data.

2003: Estimate based on reported data.

2004: Estimate based on reported data.

2005: Estimate based on reported data. Survey not accepted. Ninety-two percent of survey results were based on maternal recall.

2006: Estimate based on reported data. Current estimate of 26 percent changed from previous revision value of 35 percent.

2007: Estimate based on reported data. Government of Somalia reports four months of vaccine stockout in 2007. Current estimate of 40 percent changed from previous revision value of 39 percent.

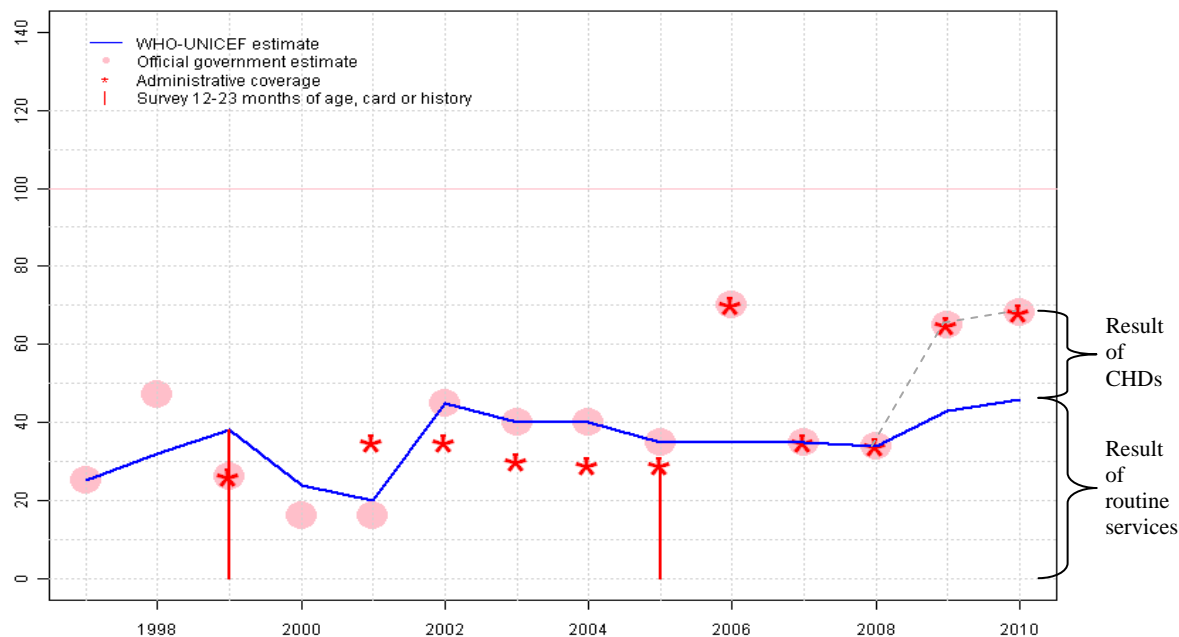
2008: Estimate based on reported data. Current estimate of 40 percent changed from previous revision value of 24 percent.

2009: Estimate based on reported data. To complement the currently weak routine immunization system, Somalia also offers OPV for children under five years of age through semi-annual Child Health Days (CHDs). Ministry of Health reports that 96 percent coverage was reached among children of this age group during CHDs. Reported data and estimate includes only coverage reached through routine services and does not include immunizations delivered during CHDs. It is important to note that immunizations provided through CHDs provide significant levels of protection against vaccine preventable diseases and are an important strategy in reaching children in this still fragile state. Current estimate of 41 percent changed from previous revision value of 28 percent.

2010: Estimate based on reported data. To complement the currently weak routine immunization system, Somalia also offers OPV for children under five years of age through semi-annual Child Health Days (CHDs). Reported data and estimate include only coverage reached through routine services and do not include immunizations delivered during CHDs. It is important to note that immunizations provided through CHDs provide significant levels of protection against vaccine preventable diseases and are an important strategy in reaching children in this still fragile state.

Somalia - MCV

SOM - MCV



| | 1997 | 1998 | 1999 | 2000 | 2001 | 2002 | 2003 | 2004 | 2005 | 2006 | 2007 | 2008 | 2009 | 2010 |
|----------------|------|------|------|------|------|------|------|------|------|------|------|------|------|------|
| Estimate | 25 | 32 | 38 | 24 | 20 | 45 | 40 | 40 | 35 | 35 | 35 | 34 | 43 | 46 |
| Official | 25 | 47 | 26 | 16 | 16 | 45 | 40 | 40 | 35 | 70 | 35 | 34 | 65 | 68 |
| Administrative | NA | NA | 26 | NA | 35 | 35 | 30 | 29 | 29 | 70 | 35 | 34 | 65 | 68 |
| Survey | NA | NA | 38 | NA | NA | NA | NA | NA | 29 | NA | NA | NA | NA | NA |

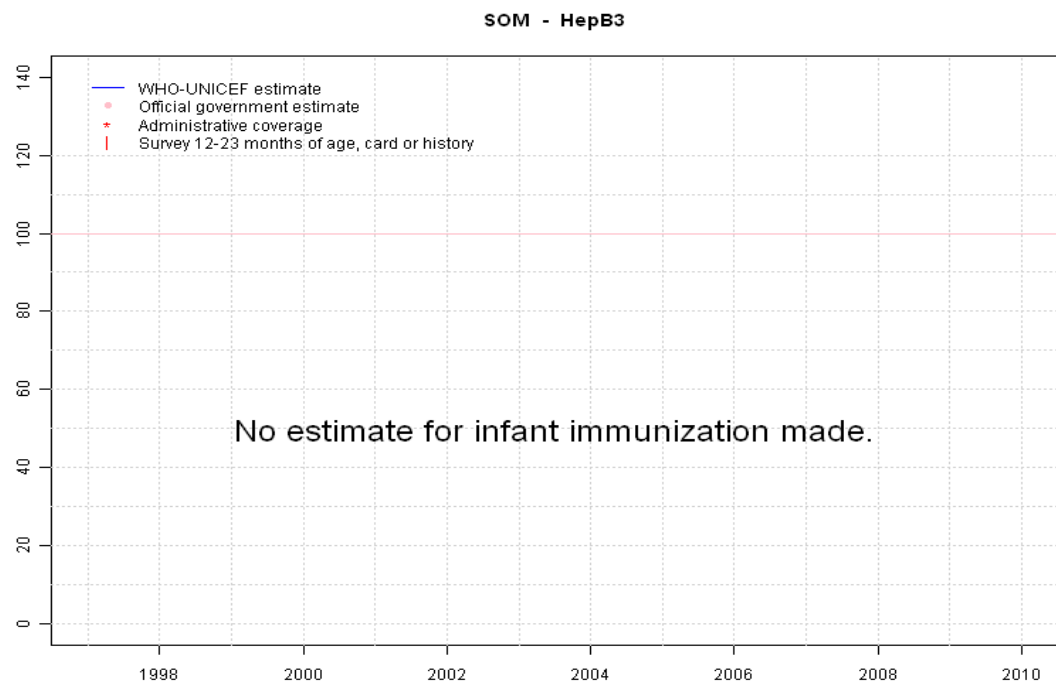
Description:

- 1997: Legacy estimate.
- 1998: Estimate based on interpolation between 1997 and 1999. Reported data not accepted due to an increase from 25 percent to 47 percent with a subsequent decrease to 26 percent.
- 1999: Estimate based on survey results. 38 percent survey results does not support reported data of 26 percent.
- 2000: Reported data calibrated to 1999 and 2002 levels. Current estimate of 24 percent changed from previous revision value of 35 percent.
- 2001: Reported data calibrated to 1999 and 2002 levels. Current estimate of 20 percent changed from previous revision value of 35 percent.
- 2002: Estimate is based on the reported data.
- 2003: Estimate based on reported data.
- 2004: Estimate based on reported data.
- 2005: Estimate based on reported data. Survey not accepted. Ninety-two percent of survey results were based on maternal recall.
- 2006: Estimate based on interpolation between 2005 and 2007. Reported data not accepted due to an increase from 35 percent to 70 percent with a subsequent decrease to 35 percent. Reported MCV coverage includes doses administered during a measles campaign.
- 2007: Estimate based on reported data. Current estimate of 35 percent changed from previous revision value of 34 percent.
- 2008: Estimate based on reported data. Current estimate of 34 percent changed from previous revision value of 24 percent.
- 2009: The WHO and UNICEF estimate follows the trend in the WHO and UNICEF estimates for DTP3 from 2008 through 2010, calibrated to the level of the 2008 reported measles coverage. There is, however, considerable uncertainty of at least plus or minus 10 percentage points regarding coverage estimates due to uncertainty in the number of children in the target population, the most recent Somali census was conducted in 1987, the difficulty of coordinating recording and reporting between CHD activities and routine services, and the assumption of trends similar to that of DTP3 coverage. It is important to note that immunizations provided through CHDs provide significant levels of protection against vaccine preventable diseases and are an important strategy in reaching children in this still fragile state. Current estimate of 43 percent changed from previous revision value of 24 percent.
- 2010: The WHO and UNICEF estimate follows the trend in the WHO and UNICEF estimates for DTP3 from 2008 through 2010, calibrated to the level of the 2008 reported measles coverage. There is, however, considerable uncertainty of at least plus or minus 10 percentage points regarding coverage estimates due to uncertainty in the number of children in the

Somalia - MCV

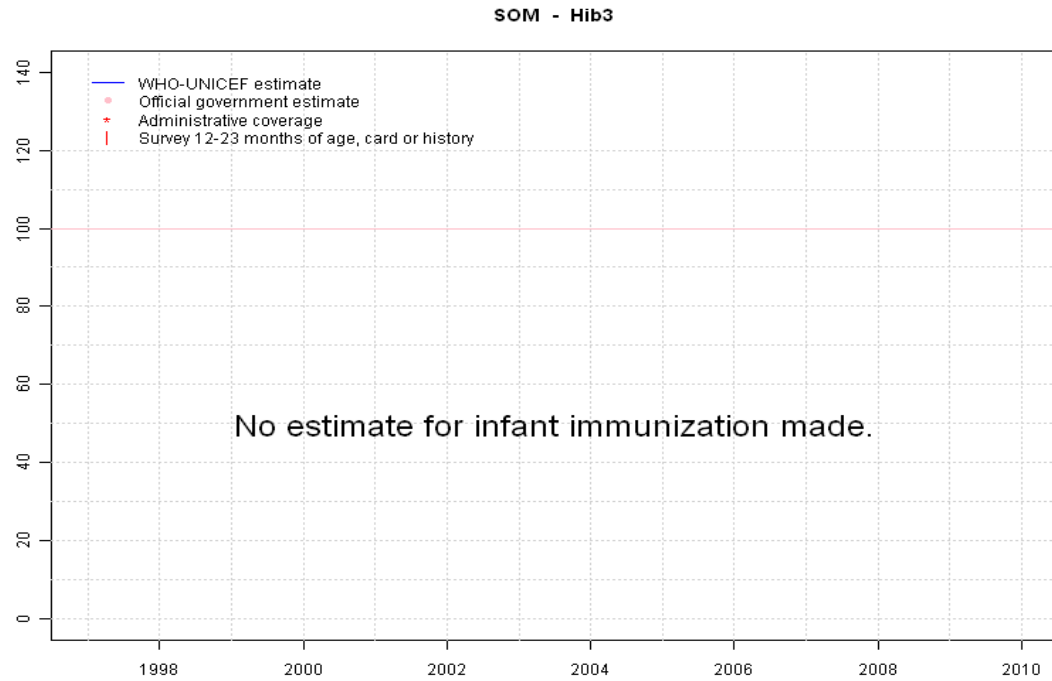
target population, the most recent Somali census was conducted in 1987, the difficulty of coordinating recording and reporting between CHD activities and routine services, and the assumption of trends similar to that of DTP3 coverage. It is important to note that immunizations provided through CHDs provide significant levels of protection against vaccine preventable diseases and are an important strategy in reaching children in this still fragile state.

Somalia - HepB3



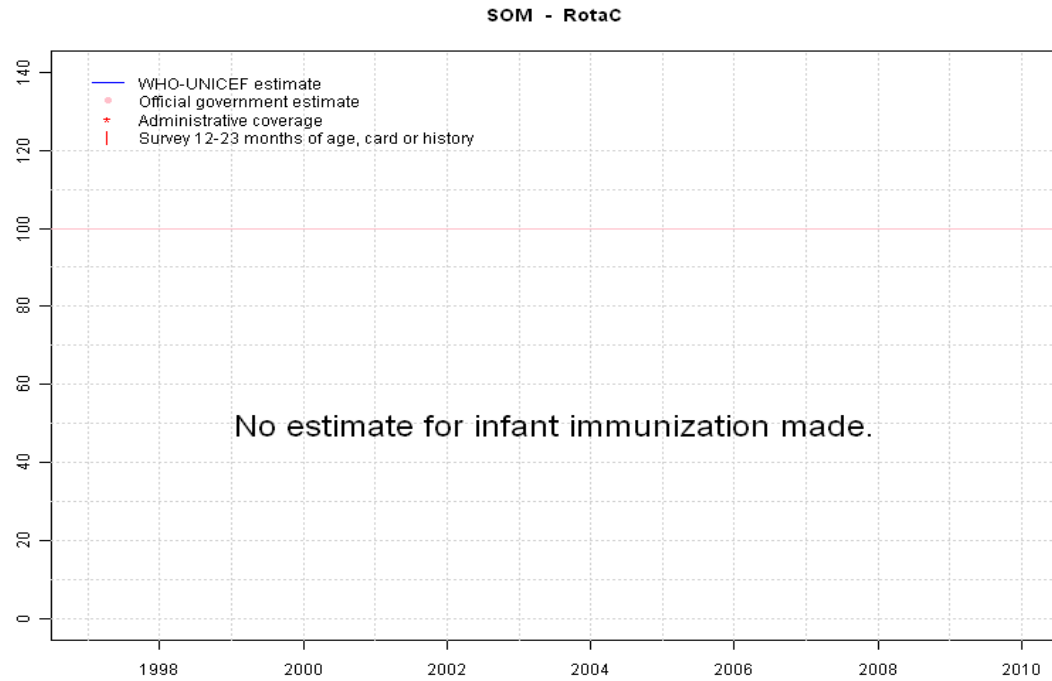
| | 1997 | 1998 | 1999 | 2000 | 2001 | 2002 | 2003 | 2004 | 2005 | 2006 | 2007 | 2008 | 2009 | 2010 |
|----------------|------|------|------|------|------|------|------|------|------|------|------|------|------|------|
| Estimate | NA | NA | NA | NA | NA | NA | NA | NA | NA | NA | NA | NA | NA | NA |
| Official | NA | NA | NA | NA | NA | NA | NA | NA | NA | NA | NA | NA | NA | NA |
| Administrative | NA | NA | NA | NA | NA | NA | NA | NA | NA | NA | NA | NA | NA | NA |
| Survey | NA | NA | NA | NA | NA | NA | NA | NA | NA | NA | NA | NA | NA | NA |

Somalia - Hib3



| | 1997 | 1998 | 1999 | 2000 | 2001 | 2002 | 2003 | 2004 | 2005 | 2006 | 2007 | 2008 | 2009 | 2010 |
|----------------|------|------|------|------|------|------|------|------|------|------|------|------|------|------|
| Estimate | NA | NA | NA | NA | NA | NA | NA | NA | NA | NA | NA | NA | NA | NA |
| Official | NA | NA | NA | NA | NA | NA | NA | NA | NA | NA | NA | NA | NA | NA |
| Administrative | NA | NA | NA | NA | NA | NA | NA | NA | NA | NA | NA | NA | NA | NA |
| Survey | NA | NA | NA | NA | NA | NA | NA | NA | NA | NA | NA | NA | NA | NA |

Somalia - RotaC



| | 1997 | 1998 | 1999 | 2000 | 2001 | 2002 | 2003 | 2004 | 2005 | 2006 | 2007 | 2008 | 2009 | 2010 |
|----------------|------|------|------|------|------|------|------|------|------|------|------|------|------|------|
| Estimate | NA | NA | NA | NA | NA | NA | NA | NA | NA | NA | NA | NA | NA | NA |
| Official | NA | NA | NA | NA | NA | NA | NA | NA | NA | NA | NA | NA | NA | NA |
| Administrative | NA | NA | NA | NA | NA | NA | NA | NA | NA | NA | NA | NA | NA | NA |
| Survey | NA | NA | NA | NA | NA | NA | NA | NA | NA | NA | NA | NA | NA | NA |

Somalia - PcV3

SOM - PcV3



| | 1997 | 1998 | 1999 | 2000 | 2001 | 2002 | 2003 | 2004 | 2005 | 2006 | 2007 | 2008 | 2009 | 2010 |
|----------------|------|------|------|------|------|------|------|------|------|------|------|------|------|------|
| Estimate | NA | NA | NA | NA | NA | NA | NA | NA | NA | NA | NA | NA | NA | NA |
| Official | NA | NA | NA | NA | NA | NA | NA | NA | NA | NA | NA | NA | NA | NA |
| Administrative | NA | NA | NA | NA | NA | NA | NA | NA | NA | NA | NA | NA | NA | NA |
| Survey | NA | NA | NA | NA | NA | NA | NA | NA | NA | NA | NA | NA | NA | NA |

Somalia - survey details

2005 Somalia Multiple Indicator Cluster Survey 2006

| Vaccine | Confirmation method | Coverage | Age cohort | Sample | Cards seen |
|---------|---------------------|----------|------------|--------|------------|
| BCG | C or H <12 months | 26 | 12-23 m | 1086 | 8 |
| BCG | Card | 8 | 12-23 m | 1086 | 8 |
| BCG | Card or History | 30 | 12-23 m | 1086 | 8 |
| BCG | History | 22 | 12-23 m | 1086 | 8 |
| DTP1 | Card or History | 24 | 12-23 m | 1086 | 8 |
| DTP1 | Card | 8 | 12-23 m | 1086 | 8 |
| DTP1 | History | 16 | 12-23 m | 1086 | 8 |
| DTP1 | C or H <12 months | 20 | 12-23 m | 1086 | 8 |
| DTP3 | History | 7 | 12-23 m | 1086 | 8 |
| DTP3 | Card or History | 14 | 12-23 m | 1086 | 8 |
| DTP3 | Card | 7 | 12-23 m | 1086 | 8 |
| DTP3 | C or H <12 months | 12 | 12-23 m | 1086 | 8 |
| MCV | History | 22 | 12-23 m | 1086 | 8 |
| MCV | Card or History | 29 | 12-23 m | 1086 | 8 |
| MCV | Card | 7 | 12-23 m | 1086 | 8 |
| MCV | C or H <12 months | 19 | 12-23 m | 1086 | 8 |
| Pol1 | History | 54 | 12-23 m | 1086 | 8 |
| Pol1 | Card | 8 | 12-23 m | 1086 | 8 |
| Pol1 | Card or History | 62 | 12-23 m | 1086 | 8 |
| Pol1 | C or H <12 months | 52 | 12-23 m | 1086 | 8 |

| | | | | | |
|------|-------------------|----|---------|------|---|
| Pol3 | Card or History | 39 | 12-23 m | 1086 | 8 |
| Pol3 | C or H <12 months | 35 | 12-23 m | 1086 | 8 |
| Pol3 | History | 31 | 12-23 m | 1086 | 8 |
| Pol3 | Card | 8 | 12-23 m | 1086 | 8 |

1999 MICS Somalia, 1999

| Vaccine | Confirmation method | Coverage | Age cohort | Sample | Cards seen |
|---------|---------------------|----------|------------|--------|------------|
| BCG | Card | 71 | 12-23 m | 490 | 0 |
| BCG | Card or History | 71 | 12-23 m | 490 | 0 |
| DTP1 | Card or History | 59 | 12-23 m | 490 | 0 |
| DTP1 | Card | 59 | 12-23 m | 490 | 0 |
| DTP3 | Card or History | 36 | 12-23 m | 490 | 0 |
| DTP3 | Card | 36 | 12-23 m | 490 | 0 |
| MCV | Card or History | 38 | 12-23 m | 490 | 0 |
| MCV | Card | 38 | 12-23 m | 490 | 0 |
| Pol1 | Card or History | 60 | 12-23 m | 490 | 0 |
| Pol1 | Card | 60 | 12-23 m | 490 | 0 |
| Pol3 | Card or History | 40 | 12-23 m | 490 | 0 |
| Pol3 | Card | 40 | 12-23 m | 490 | 0 |

Further information and estimates for 1980-1996 are available at:

http://www.childinfo.org/immunization_countryreports.html

http://www.who.int/immunization_monitoring/routine/immunization_coverage/en/index4.html

Somalia

WHO/UNICEF Estimates of Protection at Birth (PAB) against tetanus

In countries where tetanus is recommended for girls and women coverage is usually reported as "TT2+", i.e. the proportion of (pregnant) women who have received their second or superior TT dose in a given year. TT2 + coverage, however, can under-represent the actual proportion of births that are protected against tetanus as it does not include women who have previously received protective doses, women who received one dose without documentation of previous doses, and women who received doses in TT (or Td) supplemental immunization activities (SIA). In addition, girls who have received DTP in their childhood and are entering childbearing age, may be protected with TT booster doses.

WHO and UNICEF have developed a model that takes into account the above scenarios, and calculates the proportion of births in a given year that can be considered as having been protected against tetanus - "Protection at Birth".

In this model, annual cohorts of women are followed from infancy through their life. A proportion receive DTP in infancy (estimated based on the WHO-UNICEF estimates of DTP3 coverage). In addition some of these women also receive TT through routine services when they are pregnant and may also receive TT during SIAs. The model also adjusts reported data, taking into account coverage patterns in other years, and/or results available through surveys. The duration of protection is then calculated, based on WHO estimates of the duration of protection by doses ever received. The proportion of births that are protected against tetanus as a result of maternal immunization reflects the tetanus immunization received by the mother throughout her life rather than simply the TT immunizations received during the current pregnancy.

| Year | PAB coverage estimate (%) |
|------|---------------------------|
| 1997 | 48 |
| 1998 | 47 |
| 1999 | 47 |
| 2000 | 47 |
| 2001 | 48 |
| 2002 | 48 |
| 2003 | 45 |
| 2004 | 45 |
| 2005 | 47 |
| 2006 | 51 |
| 2007 | 50 |
| 2008 | 49 |
| 2009 | 64 |
| 2010 | 64 |

¹ This model is described in: Griffiths U., Wolfson L., Quddus A., Younus M., Hafiz R.. Incremental cost-effectiveness of supplementary immunization activities to prevent neo-natal tetanus in Pakistan. Bulletin of the World Health Organization 2004; 82:643-651.