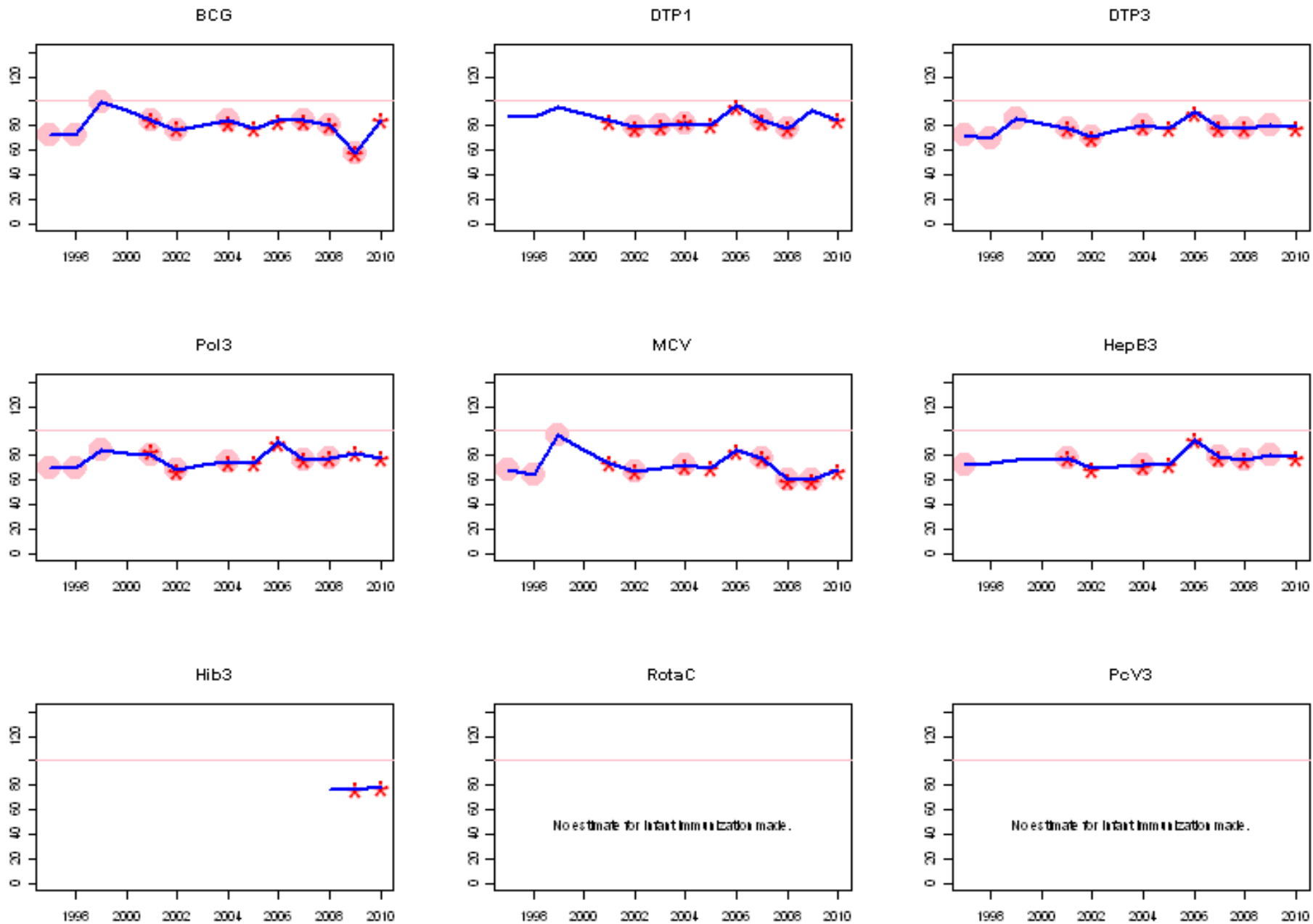
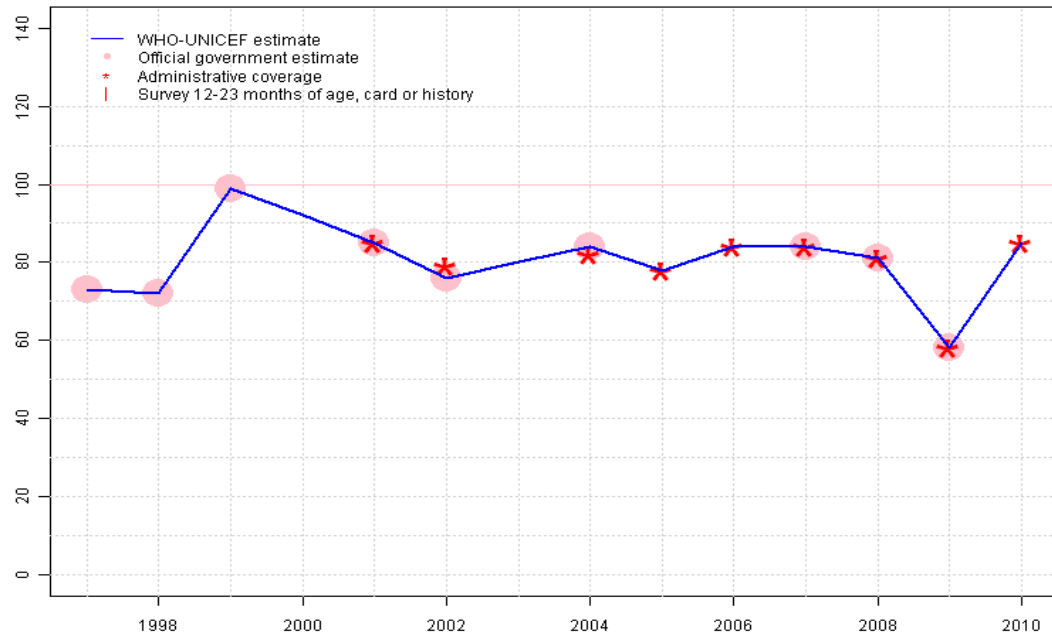


Solomon Islands. WHO and UNICEF estimates of immunization coverage: 2010 revision



# Solomon Islands - BCG

SLB - BCG



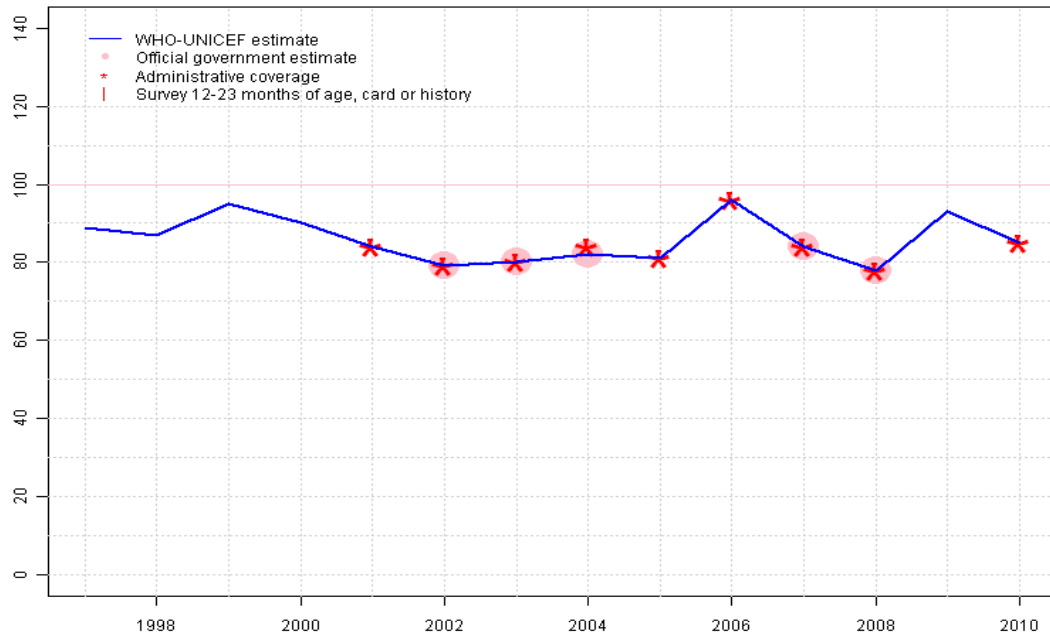
## Description:

- 1997: Legacy estimate.
- 1998: Estimate based on reported data.
- 1999: Estimate based on reported data.
- 2000: Estimate based on interpolation between 1999 and 2001.
- 2001: Estimate based on reported data.
- 2002: Estimate based on reported data.
- 2003: Estimate based on interpolation between 2002 and 2004.
- 2004: Estimate based on reported data.
- 2005: Estimate based on reported data.
- 2006: Estimate based on reported data.
- 2007: Estimate based on reported data.
- 2008: Estimate based on reported data.
- 2009: Estimate based on reported data. Current estimate of 58 percent changed from previous revision value of 81 percent.
- 2010: Estimate based on reported data.

	1997	1998	1999	2000	2001	2002	2003	2004	2005	2006	2007	2008	2009	2010
Estimate	73	72	99	92	85	76	80	84	78	84	84	81	58	85
Official	73	72	99	NA	85	76	NA	84	NA	NA	84	81	58	NA
Administrative	NA	NA	NA	NA	85	79	NA	82	78	84	84	81	58	85
Survey	NA	NA	NA	NA	NA	NA	NA	NA	NA	NA	NA	NA	NA	NA

# Solomon Islands - DTP1

SLB - DTP1



	1997	1998	1999	2000	2001	2002	2003	2004	2005	2006	2007	2008	2009	2010
Estimate	89	87	95	90	84	79	80	82	81	96	84	78	93	85
Official	NA	NA	NA	NA	NA	79	80	82	NA	NA	84	78	NA	NA
Administrative	NA	NA	NA	NA	84	79	80	84	81	96	84	78	NA	85
Survey	NA	NA	NA	NA	NA	NA	NA	NA	NA	NA	NA	NA	NA	NA

## Description:

1997: Legacy estimate.

1998: No accepted DTP1 data. Estimate based on DTP3 coverage of 69. naCurrent estimate of 87 percent changed from previous revision value of 89 percent.

1999: No accepted DTP1 data. Estimate based on DTP3 coverage of 86. naCurrent estimate of 95 percent changed from previous revision value of 89 percent.

2000: Estimate based on interpolation between 1999 and 2001. Current estimate of 90 percent changed from previous revision value of 89 percent.

2001: Estimate is based on reported data. Current estimate of 84 percent changed from previous revision value of 89 percent.

2002: Estimate based on reported data. Current estimate of 79 percent changed from previous revision value of 84 percent.

2003: Estimate based on reported data. Current estimate of 80 percent changed from previous revision value of 85 percent.

2004: Estimate based on reported data. Current estimate of 82 percent changed from previous revision value of 87 percent.

2005: Estimate based on reported data. Current estimate of 81 percent changed from previous revision value of 86 percent.

2006: Estimate based on reported data. Current estimate of 96 percent changed from previous revision value of 99 percent.

2007: Estimate based on reported data. Current estimate of 84 percent changed from previous revision value of 89 percent.

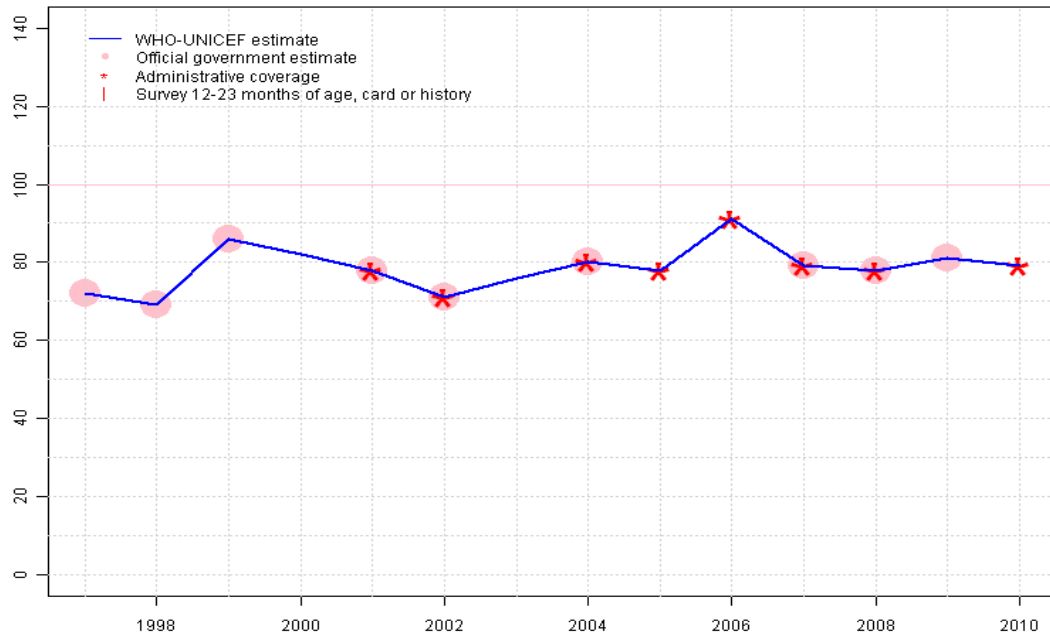
2008: Estimate based on reported data. Current estimate of 78 percent changed from previous revision value of 83 percent.

2009: No accepted DTP1 data. Estimate based on DTP3 coverage of 81. naCurrent estimate of 93 percent changed from previous revision value of 83 percent.

2010: Estimate based on reported data.

# Solomon Islands - DTP3

SLB - DTP3



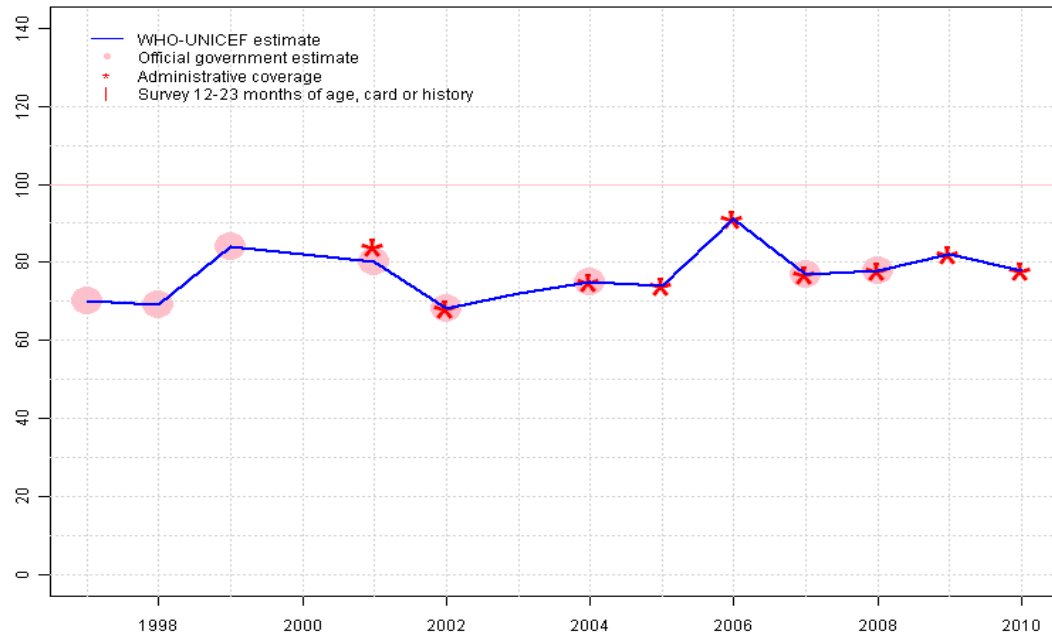
## Description:

- 1997: Legacy estimate.
- 1998: Estimate based on reported data.
- 1999: Estimate based on reported data.
- 2000: Estimate based on interpolation between 1999 and 2001.
- 2001: Estimate based on reported data.
- 2002: Estimate based on reported data.
- 2003: Estimate based on interpolation between 2002 and 2004.
- 2004: Estimate based on reported data.
- 2005: Estimate based on reported data.
- 2006: Estimate based on reported data.
- 2007: Estimate based on reported data.
- 2008: Estimate based on reported data.
- 2009: Estimate based on reported data.
- 2010: Estimate based on reported data.

	1997	1998	1999	2000	2001	2002	2003	2004	2005	2006	2007	2008	2009	2010
Estimate	72	69	86	82	78	71	76	80	78	91	79	78	81	79
Official	72	69	86	NA	78	71	NA	80	NA	NA	79	78	81	NA
Administrative	NA	NA	NA	NA	78	71	NA	80	78	91	79	78	NA	79
Survey	NA	NA	NA	NA	NA	NA	NA	NA	NA	NA	NA	NA	NA	NA

# Solomon Islands - Pol3

SLB - Pol3



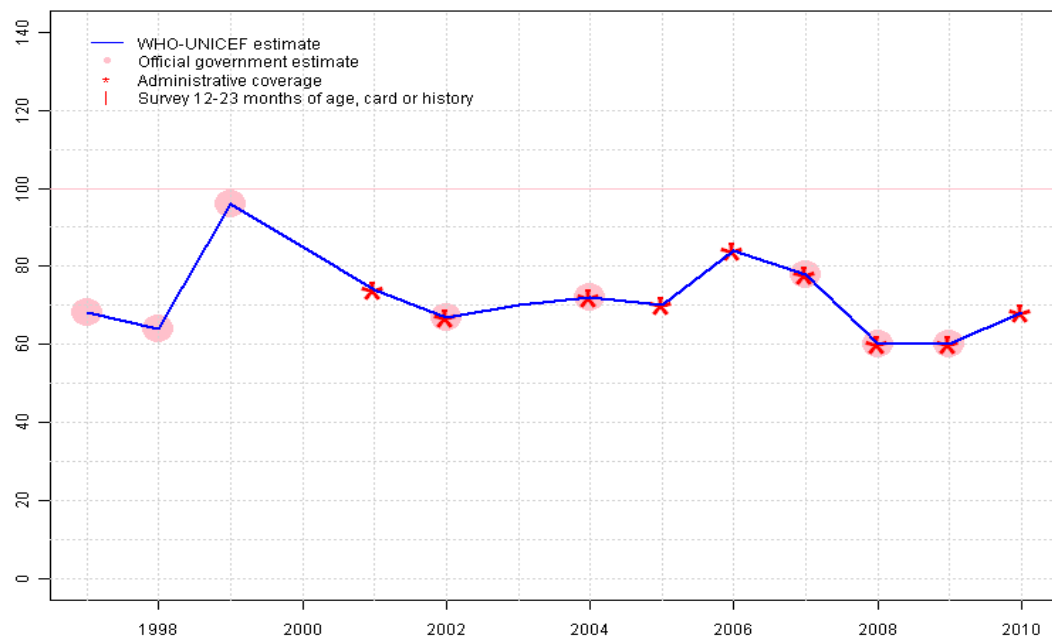
## Description:

- 1997: Legacy estimate.
- 1998: Estimate based on reported data.
- 1999: Estimate based on reported data.
- 2000: Estimate based on interpolation between 1999 and 2001.
- 2001: Estimate based on reported data.
- 2002: Estimate based on reported data.
- 2003: Estimate based on interpolation between 2002 and 2004.
- 2004: Estimate based on reported data.
- 2005: Estimate based on reported data.
- 2006: Estimate based on reported data.
- 2007: Estimate based on reported data.
- 2008: Estimate based on reported data. Vaccine stock out 1 month.na
- 2009: Estimate based on reported data.
- 2010: Estimate based on reported data.

	1997	1998	1999	2000	2001	2002	2003	2004	2005	2006	2007	2008	2009	2010
Estimate	70	69	84	82	80	68	72	75	74	91	77	78	82	78
Official	70	69	84	NA	80	68	NA	75	NA	NA	77	78	NA	NA
Administrative	NA	NA	NA	NA	84	68	NA	75	74	91	77	78	82	78
Survey	NA	NA	NA	NA	NA	NA	NA	NA	NA	NA	NA	NA	NA	NA

# Solomon Islands - MCV

SLB - MCV



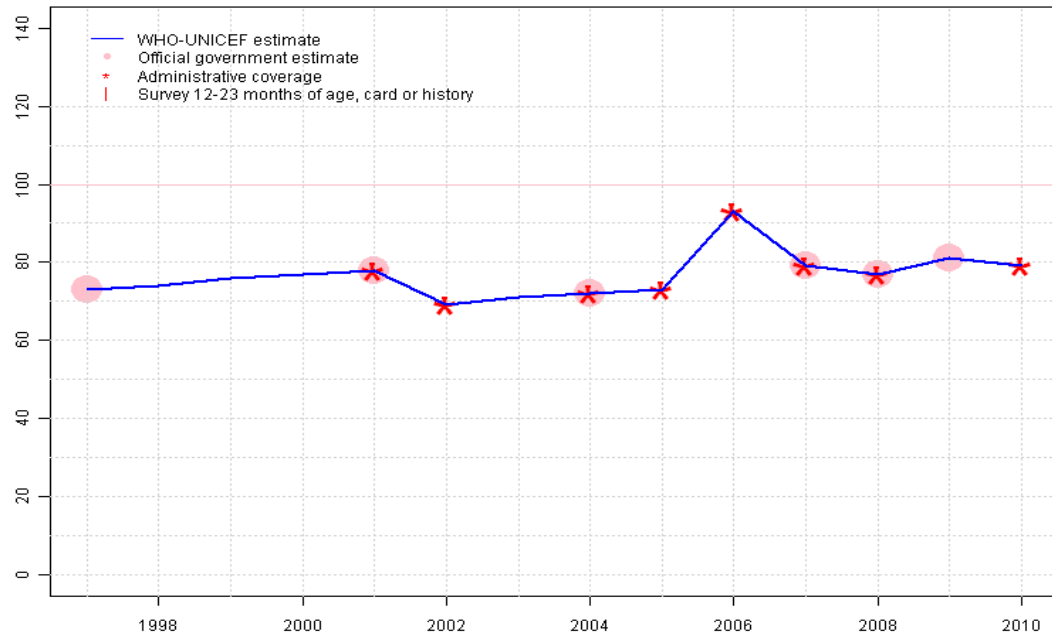
## Description:

- 1997: Legacy estimate.
- 1998: Estimate based on reported data.
- 1999: Estimate based on reported data.
- 2000: Estimate based on interpolation between 1999 and 2001. Current estimate of 85 percent changed from previous revision value of 87 percent.
- 2001: Estimate based on reported data. Current estimate of 74 percent changed from previous revision value of 78 percent.
- 2002: Estimate based on reported data.
- 2003: Estimate based on interpolation between 2002 and 2004.
- 2004: Estimate based on reported data.
- 2005: Estimate based on reported data.
- 2006: Estimate based on reported data.
- 2007: Estimate based on reported data.
- 2008: Estimate based on reported data.
- 2009: Estimate based on reported data.
- 2010: Estimate based on reported data.

	1997	1998	1999	2000	2001	2002	2003	2004	2005	2006	2007	2008	2009	2010
Estimate	68	64	96	85	74	67	70	72	70	84	78	60	60	68
Official	68	64	96	NA	NA	67	NA	72	NA	NA	78	60	60	NA
Administrative	NA	NA	NA	NA	74	67	NA	72	70	84	78	60	60	68
Survey	NA	NA	NA	NA	NA	NA	NA	NA	NA	NA	NA	NA	NA	NA

# Solomon Islands - HepB3

SLB - HepB3



## Description:

1997: Legacy estimate.

1998: Estimate based on interpolation between 1997 and 2001.

1999: Estimate based on interpolation between 1997 and 2001.

2000: Estimate based on interpolation between 1997 and 2001.

2001: Estimate based on reported data.

2002: Estimate based on reported data. Current estimate of 69 percent changed from previous revision value of 68 percent.

2003: Estimate based on interpolation between 2002 and 2004. Current estimate of 71 percent changed from previous revision value of 70 percent.

2004: Estimate based on reported data.

2005: Estimate based on reported data.

2006: Estimate based on reported data.

2007: Estimate based on reported data.

2008: Estimate based on reported data. Vaccine stock out for 3 months.na

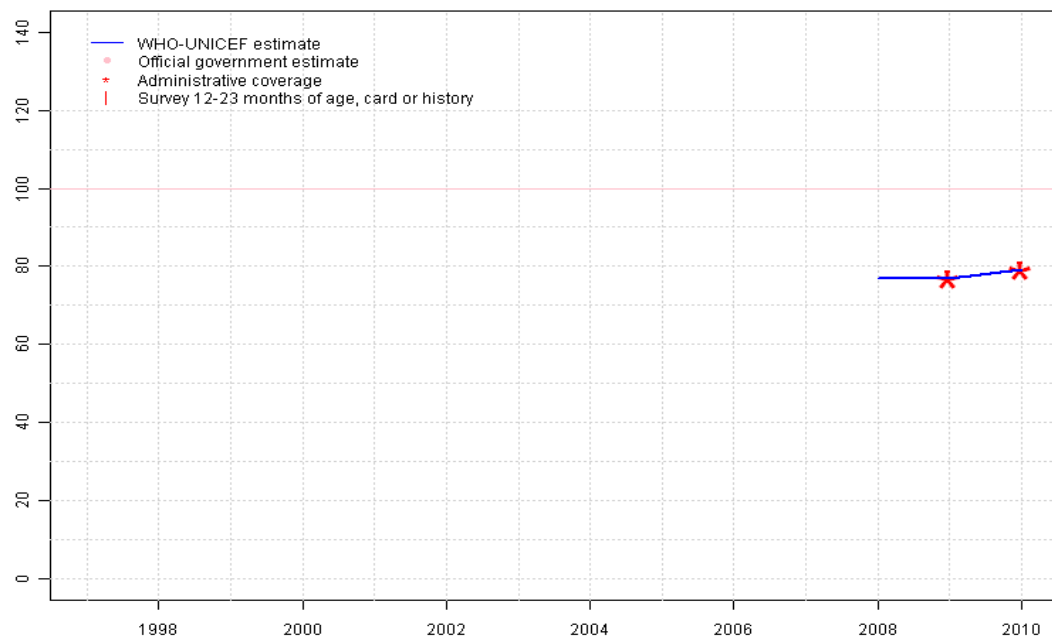
2009: Estimate based on reported data.

2010: Estimate based on reported data.

	1997	1998	1999	2000	2001	2002	2003	2004	2005	2006	2007	2008	2009	2010
Estimate	73	74	76	77	78	69	71	72	73	93	79	77	81	79
Official	73	NA	NA	NA	78	NA	NA	72	NA	NA	79	77	81	NA
Administrative	NA	NA	NA	NA	78	69	NA	72	73	93	79	77	NA	79
Survey	NA	NA	NA	NA	NA	NA	NA	NA	NA	NA	NA	NA	NA	NA

# Solomon Islands - Hib3

SLB - Hib3



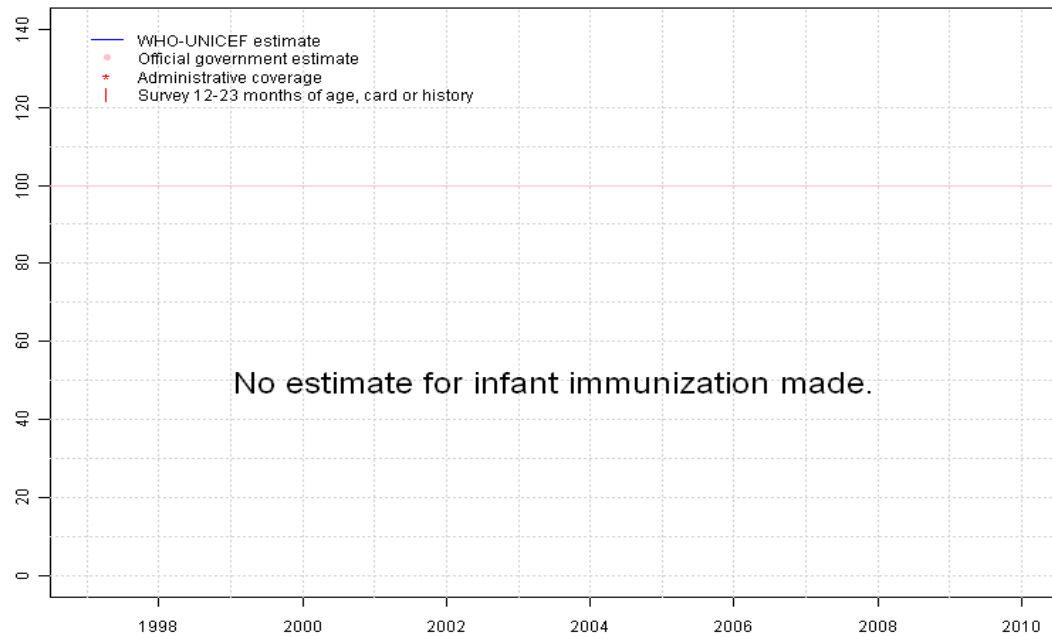
## Description:

- 2008: Estimate based on extrapolation from 2009 value of 77 percent. Hib introduced in 2008 Vaccine presentation is DTP-HepB-Hib.Vaccine stock out for 3 months.na
- 2009: Estimate based on reported data. Hib introduced in 2008. Reporting started in 2009. Vaccine presentation is DTP-HepB-Hib.na
- 2010: Estimate based on reported data.

	1997	1998	1999	2000	2001	2002	2003	2004	2005	2006	2007	2008	2009	2010
Estimate	NA	NA	NA	NA	NA	NA	NA	NA	NA	NA	NA	77	77	79
Official	NA	NA	NA	NA	NA	NA	NA	NA	NA	NA	NA	NA	NA	NA
Administrative	NA	NA	NA	NA	NA	NA	NA	NA	NA	NA	NA	NA	77	79
Survey	NA	NA	NA	NA	NA	NA	NA	NA	NA	NA	NA	NA	NA	NA

# Solomon Islands - RotaC

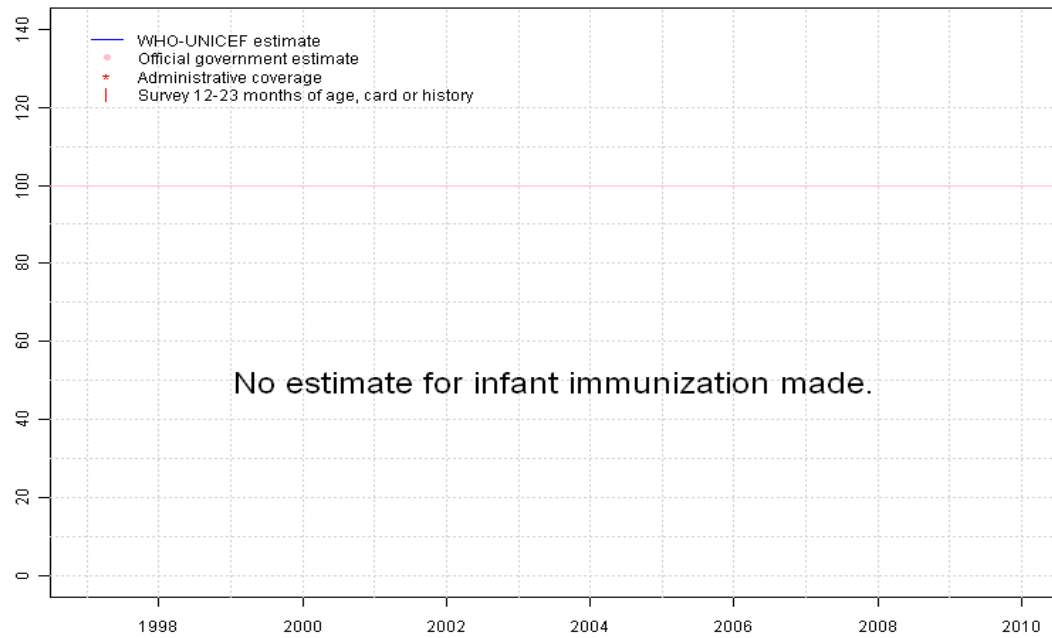
SLB - RotaC



	1997	1998	1999	2000	2001	2002	2003	2004	2005	2006	2007	2008	2009	2010
Estimate	NA	NA	NA	NA	NA	NA	NA	NA	NA	NA	NA	NA	NA	NA
Official	NA	NA	NA	NA	NA	NA	NA	NA	NA	NA	NA	NA	NA	NA
Administrative	NA	NA	NA	NA	NA	NA	NA	NA	NA	NA	NA	NA	NA	NA
Survey	NA	NA	NA	NA	NA	NA	NA	NA	NA	NA	NA	NA	NA	NA

# Solomon Islands - PcV3

SLB - PcV3



	1997	1998	1999	2000	2001	2002	2003	2004	2005	2006	2007	2008	2009	2010
Estimate	NA	NA	NA	NA	NA	NA	NA	NA	NA	NA	NA	NA	NA	NA
Official	NA	NA	NA	NA	NA	NA	NA	NA	NA	NA	NA	NA	NA	NA
Administrative	NA	NA	NA	NA	NA	NA	NA	NA	NA	NA	NA	NA	NA	NA
Survey	NA	NA	NA	NA	NA	NA	NA	NA	NA	NA	NA	NA	NA	NA

Further information and estimates for 1980-1996 are available at:

[http://www.childinfo.org/immunization\\_countryreports.html](http://www.childinfo.org/immunization_countryreports.html)

[http://www.who.int/immunization\\_monitoring/routine/immunization\\_coverage/en/index4.html](http://www.who.int/immunization_monitoring/routine/immunization_coverage/en/index4.html)

## Solomon Islands

### WHO/UNICEF Estimates of Protection at Birth (PAB) against tetanus

In countries where tetanus is recommended for girls and women coverage is usually reported as "TT2+", i.e. the proportion of (pregnant) women who have received their second or superior TT dose in a given year. TT2 + coverage, however, can under-represent the actual proportion of births that are protected against tetanus as it does not include women who have previously received protective doses, women who received one dose without documentation of previous doses, and women who received doses in TT (or Td) supplemental immunization activities (SIA). In addition, girls who have received DTP in their childhood and are entering childbearing age, may be protected with TT booster doses.

WHO and UNICEF have developed a model that takes into account the above scenarios, and calculates the proportion of births in a given year that can be considered as having been protected against tetanus - "Protection at Birth".

In this model, annual cohorts of women are followed from infancy through their life. A proportion receive DTP in infancy (estimated based on the WHO-UNICEF estimates of DTP3 coverage). In addition some of these women also receive TT through routine services when they are pregnant and may also receive TT during SIAs. The model also adjusts reported data, taking into account coverage patterns in other years, and/or results available through surveys. The duration of protection is then calculated, based on WHO estimates of the duration of protection by doses ever received. The proportion of births that are protected against tetanus as a result of maternal immunization reflects the tetanus immunization received by the mother throughout her life rather than simply the TT immunizations received during the current pregnancy.

Year	PAB coverage estimate (%)
1997	75
1998	75
1999	75
2000	75
2001	75
2002	74
2003	78
2004	82
2005	74
2006	74
2007	84
2008	85
2009	85
2010	85

---

<sup>1</sup> This model is described in: Griffiths U., Wolfson L., Quddus A., Younus M., Hafiz R.. Incremental cost-effectiveness of supplementary immunization activities to prevent neo-natal tetanus in Pakistan. Bulletin of the World Health Organization 2004; 82:643-651.