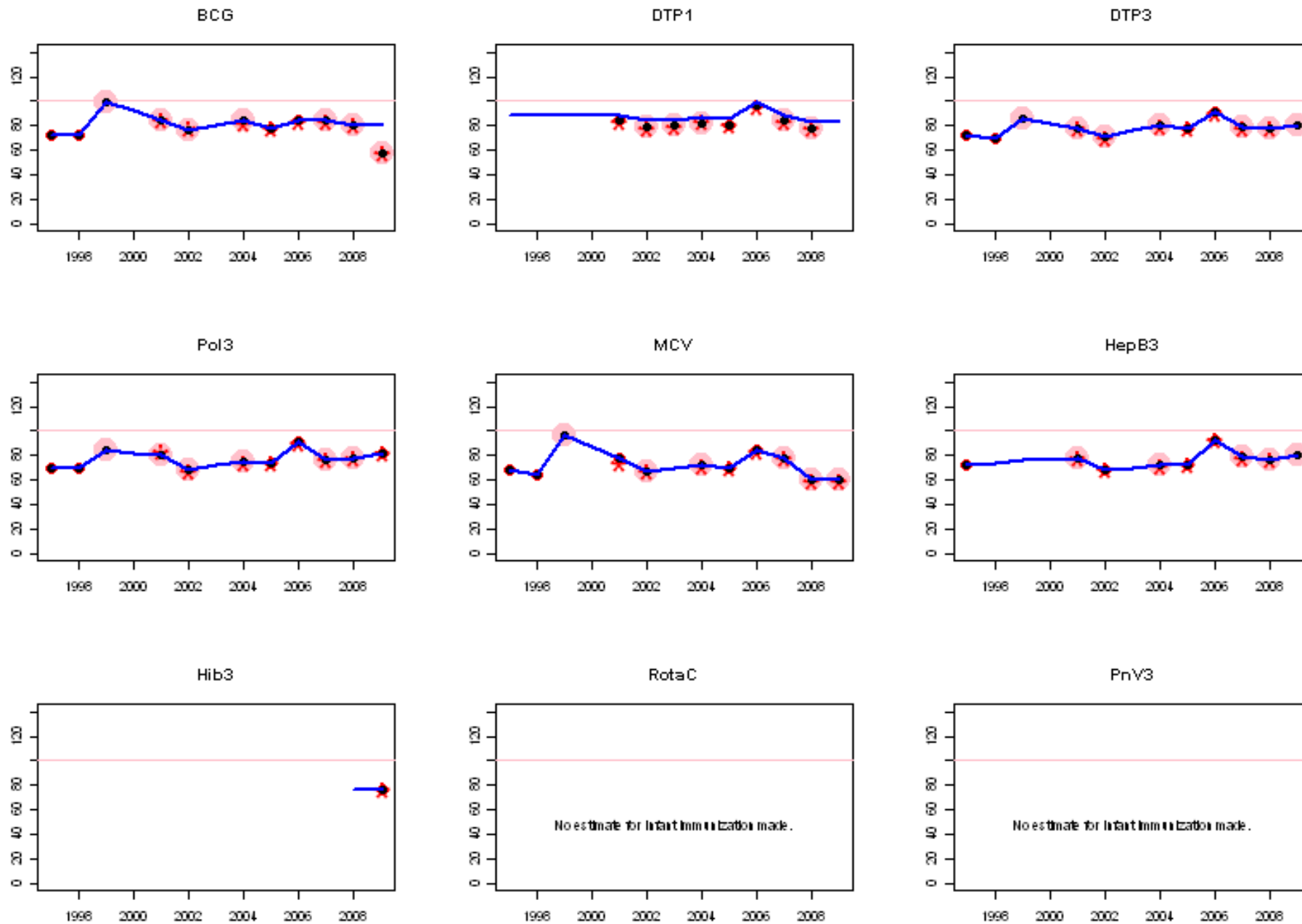
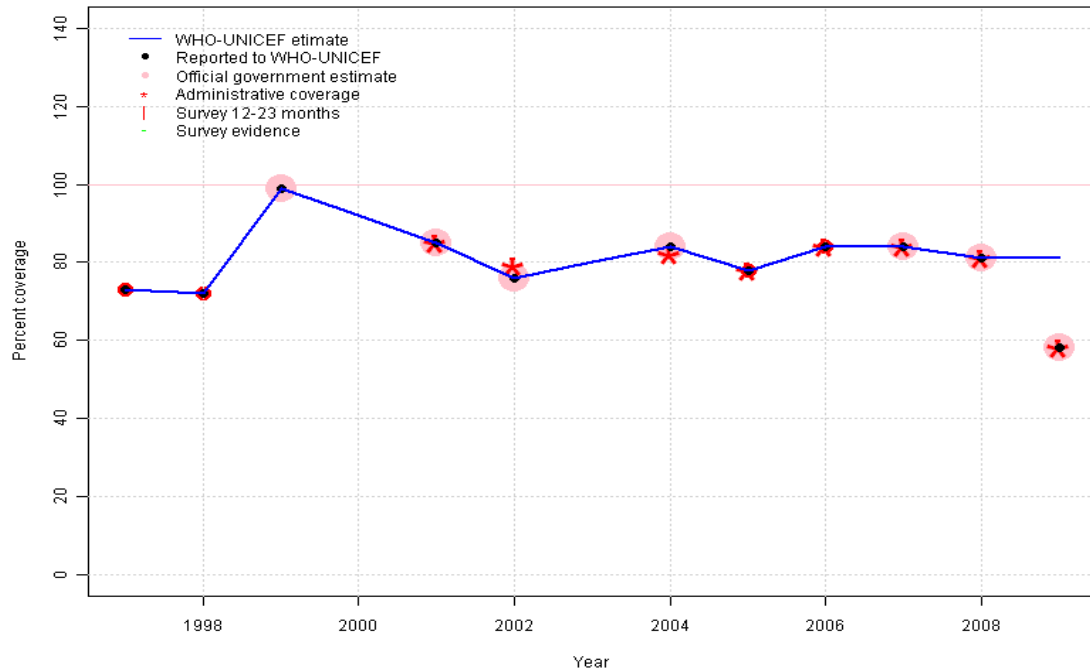


Solomon Islands: WHO and UNICEF estimates of immunization coverage, 1997 - 2009



Solomon Islands - BCG

SLB - BCG



Description:

1997: Legacy estimate.

1998: Estimate based on reported data.

1999: Estimate based on reported data.

2000: Estimate based on trend in reported data. Missing or ignored reported value estimated by interpolation between reported values of 99 percent in 1999 and 85 percent in 2001.

2001: Estimate based on reported data.

2002: Estimate based on reported data.

2003: Estimate based on trend in reported data. Missing or ignored reported value estimated by interpolation between reported values of 76 percent in 2002 and 84 percent in 2004.

2004: Estimate based on reported data.

2005: Estimate based on reported data.

2006: Estimate based on reported data.

2007: Estimate based on reported data.

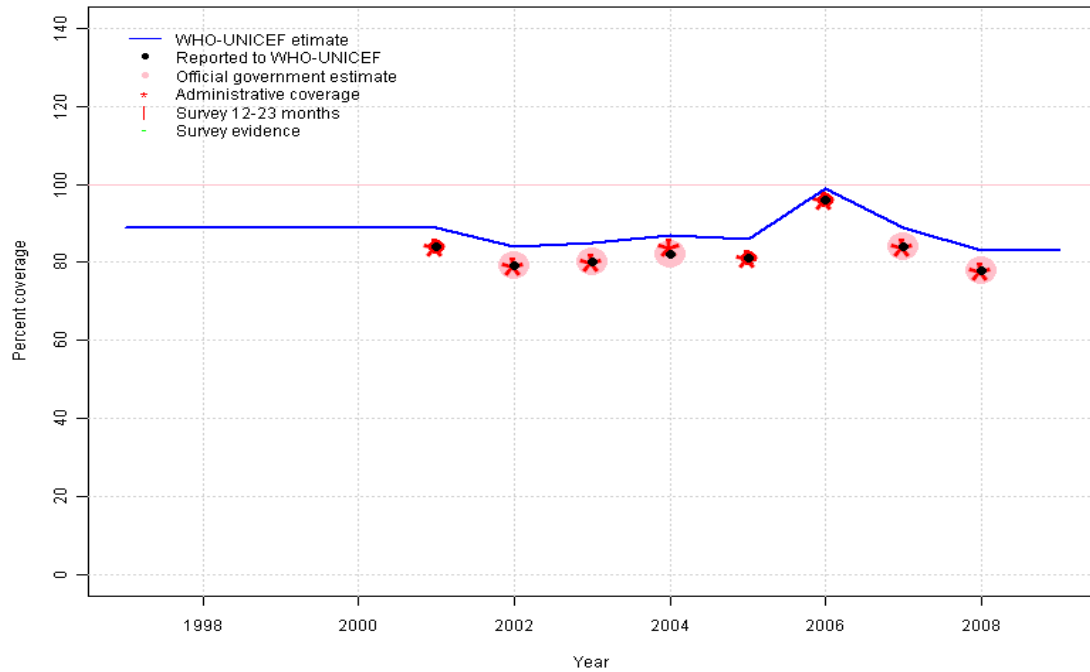
2008: Estimate based on reported data.

2009: Estimate based on trend in reported data. Missing or ignored reported value estimated by extrapolation from 2008 reported value of 81 percent. 2009 reported data (58 percent) ignored by working group. Decline attributed to incomplete data entry in health information system.

	1997	1998	1999	2000	2001	2002	2003	2004	2005	2006	2007	2008	2009
Estimate	73	72	99	92	85	76	80	84	78	84	84	81	81
Reported	73	72	99	NA	85	76	NA	84	78	84	84	81	58
Official	NA	NA	99	NA	85	76	NA	84	NA	NA	84	81	58
Administrative	NA	NA	NA	NA	85	79	NA	82	78	84	84	81	58
Survey	NA	NA	NA	NA	NA	NA	NA	NA	NA	NA	NA	NA	NA

Solomon Islands - DTP1

SLB - DTP1



	1997	1998	1999	2000	2001	2002	2003	2004	2005	2006	2007	2008	2009
Estimate	89	89	89	89	89	84	85	87	86	99	89	83	83
Reported	NA	NA	NA	NA	84	79	80	82	81	96	84	78	NA
Official	NA	NA	NA	NA	NA	79	80	82	NA	NA	84	78	NA
Administrative	NA	NA	NA	NA	84	79	80	84	81	96	84	78	NA
Survey	NA	NA	NA	NA	NA	NA	NA	NA	NA	NA	NA	NA	NA

Description:

1997: Legacy estimate.

1998: Estimate calibrated to 1997 level (89 percent) and reported coverage (84 percent).

1999: Estimate calibrated to 1997 level (89 percent) and reported coverage (84 percent).

2000: Estimate calibrated to 1997 level (89 percent) and reported coverage (84 percent).

2001: Estimate calibrated to 1997 level (89 percent) and reported coverage (84 percent).

2002: Estimate calibrated to 1997 level (89 percent) and reported coverage (79 percent).

2003: Estimate calibrated to 1997 level (89 percent) and reported coverage (80 percent).

2004: Estimate calibrated to 1997 level (89 percent) and reported coverage (82 percent).

2005: Estimate calibrated to 1997 level (89 percent) and reported coverage (81 percent).

2006: Estimate calibrated to 1997 level (89 percent) and reported coverage (96 percent).

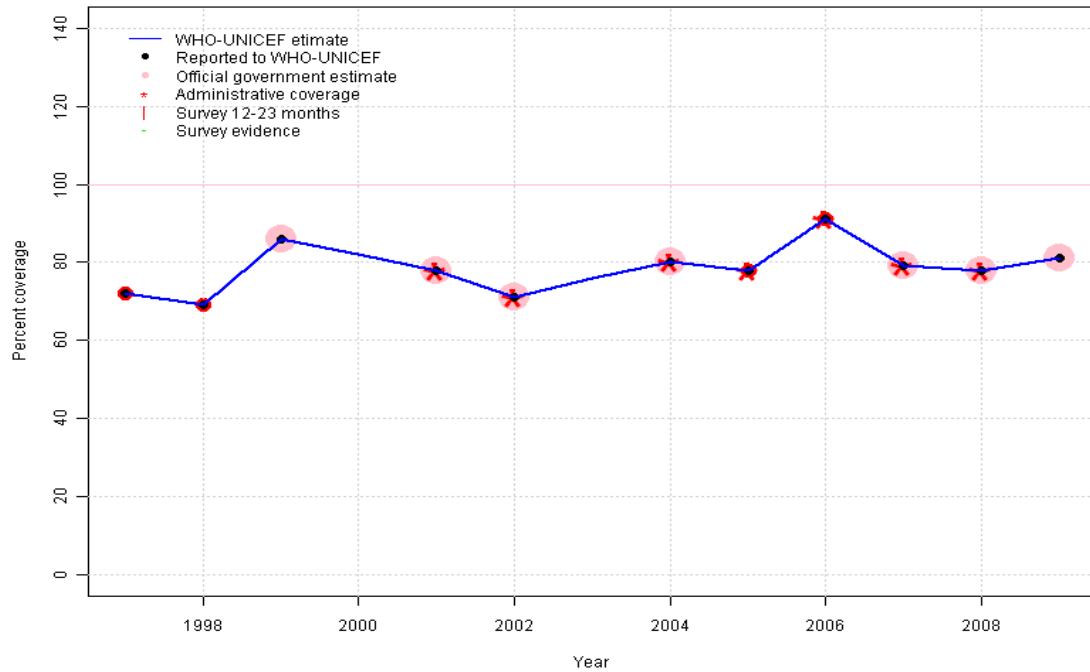
2007: Estimate calibrated to 1997 level (89 percent) and reported coverage (84 percent).

2008: Estimate calibrated to 1997 level (89 percent) and reported coverage (78 percent).

2009: Estimate calibrated to 1997 level (89 percent) and reported coverage (78 percent).

Solomon Islands - DTP3

SLB - DTP3



Description:

1997: Legacy estimate.

1998: Estimate based on reported data.

1999: Estimate based on reported data.

2000: Estimate based on trend in reported data. Missing or ignored reported value estimated by interpolation between reported values of 86 percent in 1999 and 78 percent in 2001.

2001: Estimate based on reported data.

2002: Estimate based on reported data.

2003: Estimate based on trend in reported data. Missing or ignored reported value estimated by interpolation between reported values of 71 percent in 2002 and 80 percent in 2004.

2004: Estimate based on reported data.

2005: Estimate based on reported data.

2006: Estimate based on reported data.

2007: Estimate based on reported data.

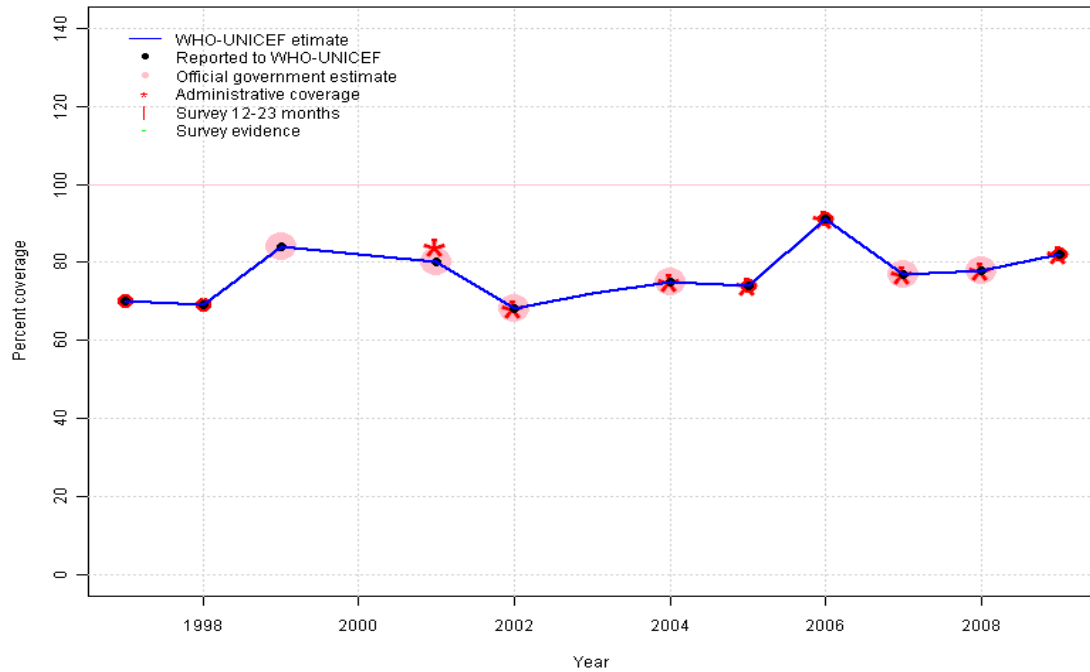
2008: Estimate based on reported data.

2009: Estimate based on reported data.

	1997	1998	1999	2000	2001	2002	2003	2004	2005	2006	2007	2008	2009
Estimate	72	69	86	82	78	71	76	80	78	91	79	78	81
Reported	72	69	86	NA	78	71	NA	80	78	91	79	78	81
Official	NA	NA	86	NA	78	71	NA	80	NA	NA	79	78	81
Administrative	NA	NA	NA	NA	78	71	NA	80	78	91	79	78	NA
Survey	NA	NA	NA	NA	NA	NA	NA	NA	NA	NA	NA	NA	NA

Solomon Islands - Pol3

SLB - Pol3



Description:

1997: Legacy estimate.

1998: Estimate based on reported data.

1999: Estimate based on reported data.

2000: Estimate based on trend in reported data. Missing or ignored reported value estimated by interpolation between reported values of 84 percent in 1999 and 80 percent in 2001.

2001: Estimate based on reported data.

2002: Estimate based on reported data.

2003: Estimate based on trend in reported data. Missing or ignored reported value estimated by interpolation between reported values of 68 percent in 2002 and 75 percent in 2004.

2004: Estimate based on reported data.

2005: Estimate based on reported data.

2006: Estimate based on reported data.

2007: Estimate based on reported data.

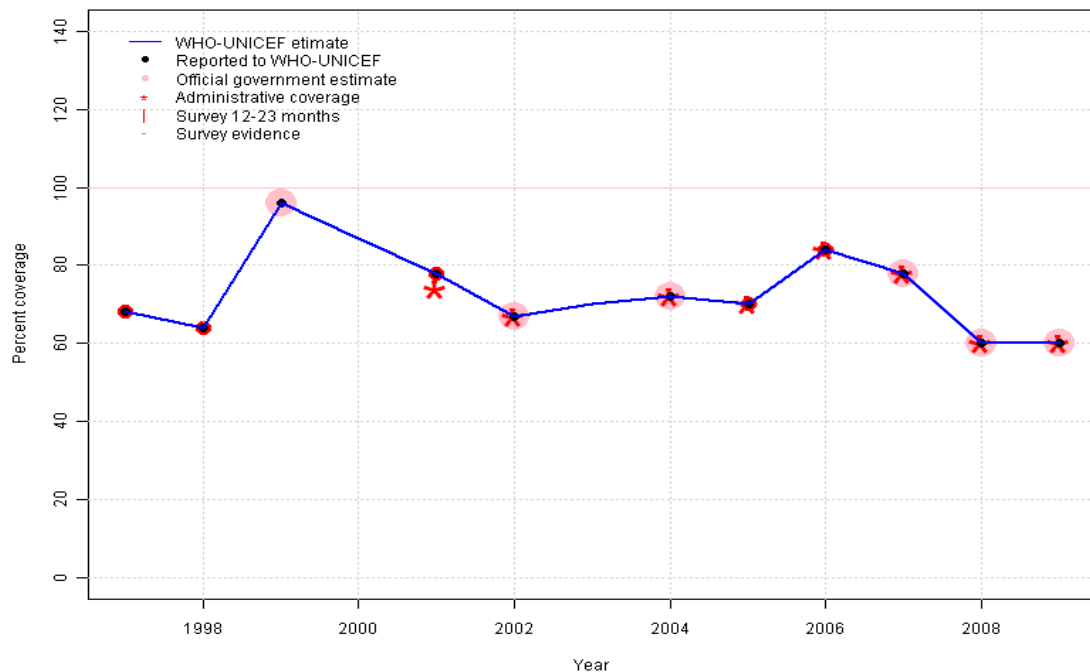
2008: Estimate based on reported data. Vaccine stock out 1 month.

2009: Estimate based on reported data.

	1997	1998	1999	2000	2001	2002	2003	2004	2005	2006	2007	2008	2009
Estimate	70	69	84	82	80	68	72	75	74	91	77	78	82
Reported	70	69	84	NA	80	68	NA	75	74	91	77	78	82
Official	NA	NA	84	NA	80	68	NA	75	NA	NA	77	78	NA
Administrative	NA	NA	NA	NA	84	68	NA	75	74	91	77	78	82
Survey	NA	NA	NA	NA	NA	NA	NA	NA	NA	NA	NA	NA	NA

Solomon Islands - MCV

SLB - MCV



Description:

1997: Legacy estimate.

1998: Estimate based on reported data.

1999: Estimate based on reported data.

2000: Estimate based on trend in reported data. Missing or ignored reported value estimated by interpolation between reported values of 96 percent in 1999 and 78 percent in 2001.

2001: Estimate based on reported data.

2002: Estimate based on reported data.

2003: Estimate based on trend in reported data. Missing or ignored reported value estimated by interpolation between reported values of 67 percent in 2002 and 72 percent in 2004.

2004: Estimate based on reported data.

2005: Estimate based on reported data.

2006: Estimate based on reported data.

2007: Estimate based on reported data.

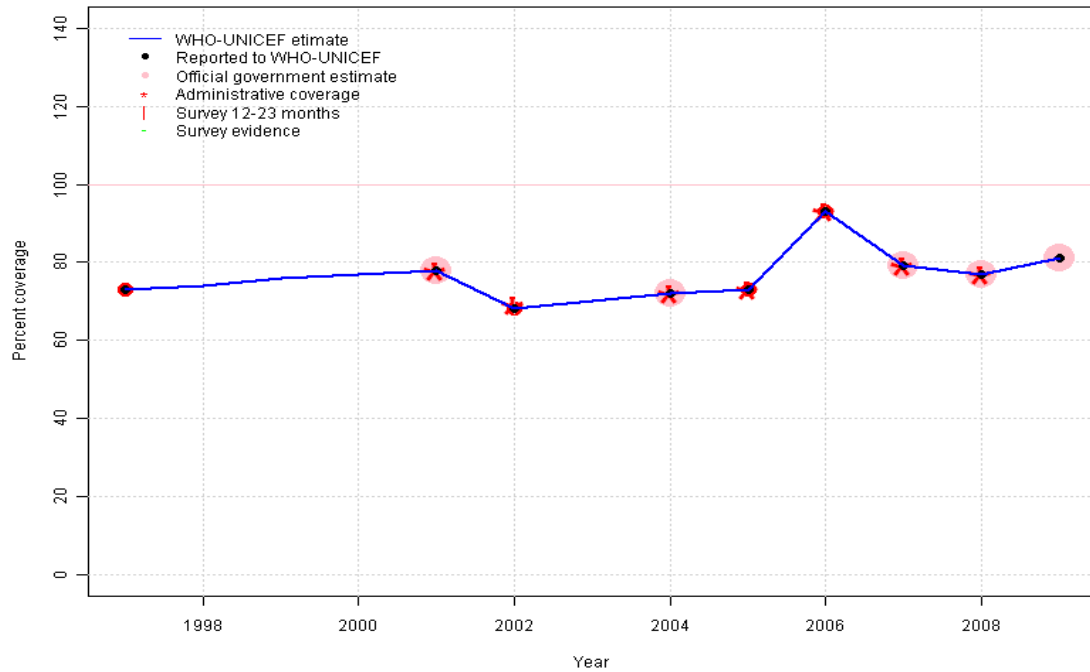
2008: Estimate based on reported data.

2009: Estimate based on reported data.

	1997	1998	1999	2000	2001	2002	2003	2004	2005	2006	2007	2008	2009
Estimate	68	64	96	87	78	67	70	72	70	84	78	60	60
Reported	68	64	96	NA	78	67	NA	72	70	84	78	60	60
Official	NA	NA	96	NA	NA	67	NA	72	NA	NA	78	60	60
Administrative	NA	NA	NA	NA	74	67	NA	72	70	84	78	60	60
Survey	NA	NA	NA	NA	NA	NA	NA	NA	NA	NA	NA	NA	NA

Solomon Islands - HepB3

SLB - HepB3



Description:

1997: Legacy estimate.

1998: Estimate based on trend in reported data. Missing or ignored reported value estimated by interpolation between reported values of 73 percent in 1997 and 78 percent in 2001.

1999: Estimate based on trend in reported data. Missing or ignored reported value estimated by interpolation between reported values of 73 percent in 1997 and 78 percent in 2001.

2000: Estimate based on trend in reported data. Missing or ignored reported value estimated by interpolation between reported values of 73 percent in 1997 and 78 percent in 2001.

2001: Estimate based on reported data.

2002: Estimate based on reported data.

2003: Estimate based on trend in reported data. Missing or ignored reported value estimated by interpolation between reported values of 68 percent in 2002 and 72 percent in 2004.

2004: Estimate based on reported data.

2005: Estimate based on reported data.

2006: Estimate based on reported data.

2007: Estimate based on reported data.

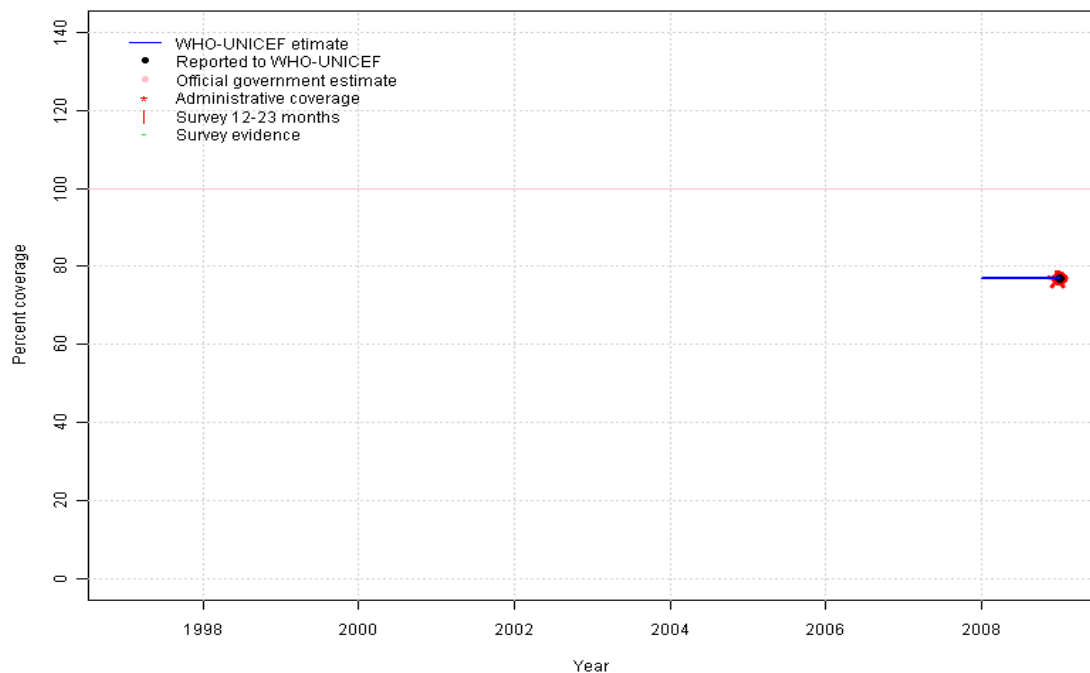
2008: Estimate based on reported data. Vaccine stock out for 3 months.

2009: Estimate based on reported data.

	1997	1998	1999	2000	2001	2002	2003	2004	2005	2006	2007	2008	2009
Estimate	73	74	76	77	78	68	70	72	73	93	79	77	81
Reported	73	NA	NA	NA	78	68	NA	72	73	93	79	77	81
Official	NA	NA	NA	NA	78	NA	NA	72	NA	NA	79	77	81
Administrative	NA	NA	NA	NA	78	69	NA	72	73	93	79	77	NA
Survey	NA	NA	NA	NA	NA	NA	NA	NA	NA	NA	NA	NA	NA

Solomon Islands - Hib3

SLB - Hib3



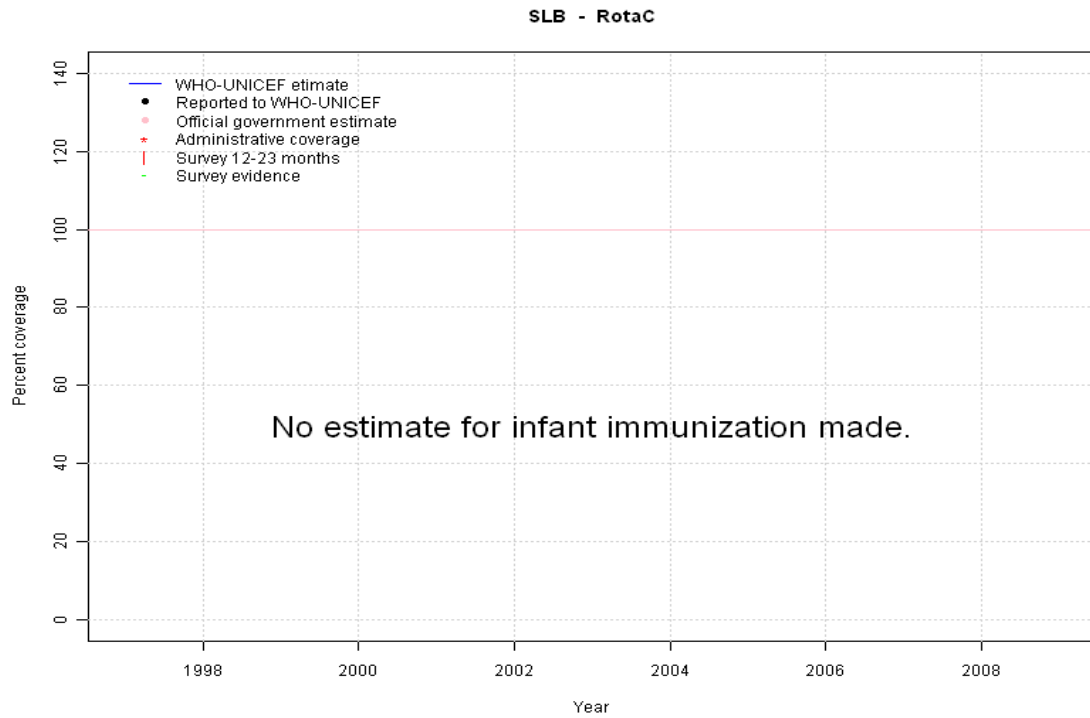
Description:

2008: Estimate based on reported data. Missing or ignored reported value estimated by extrapolation from 2009 reported value of 77 percent. Hib introduced in 2008 Vaccine presentation is DTP-HepB-Hib. Vaccine stock out for 3 months.

2009: Estimate based on reported data. Hib introduced in 2008. Reporting started in 2009. Vaccine presentation is DTP-HepB-Hib.

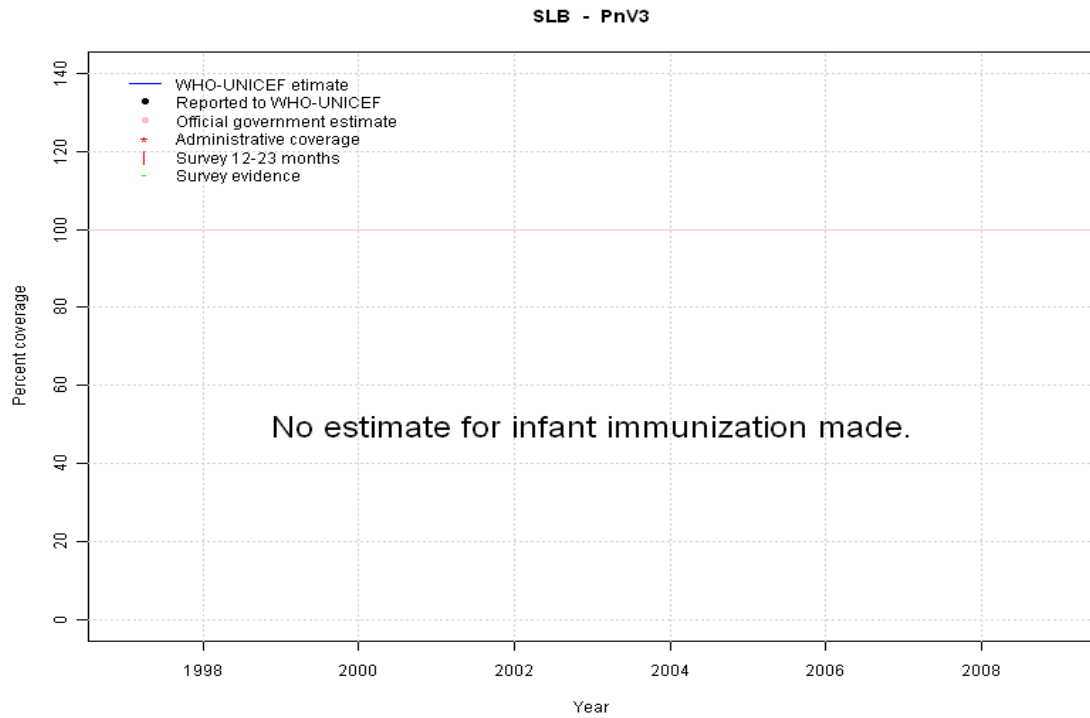
	1997	1998	1999	2000	2001	2002	2003	2004	2005	2006	2007	2008	2009
Estimate	NA	NA	NA	NA	NA	NA	NA	NA	NA	NA	NA	77	77
Reported	NA	NA	NA	NA	NA	NA	NA	NA	NA	NA	NA	NA	77
Official	NA	NA	NA	NA	NA	NA	NA	NA	NA	NA	NA	NA	NA
Administrative	NA	NA	NA	NA	NA	NA	NA	NA	NA	NA	NA	NA	77
Survey	NA	NA	NA	NA	NA	NA	NA	NA	NA	NA	NA	NA	NA

Solomon Islands - RotaC



	1997	1998	1999	2000	2001	2002	2003	2004	2005	2006	2007	2008	2009
Estimate	NA	NA	NA	NA	NA	NA	NA	NA	NA	NA	NA	NA	NA
Reported	NA	NA	NA	NA	NA	NA	NA	NA	NA	NA	NA	NA	NA
Official	NA	NA	NA	NA	NA	NA	NA	NA	NA	NA	NA	NA	NA
Administrative	NA	NA	NA	NA	NA	NA	NA	NA	NA	NA	NA	NA	NA
Survey	NA	NA	NA	NA	NA	NA	NA	NA	NA	NA	NA	NA	NA

Solomon Islands - PnV3



	1997	1998	1999	2000	2001	2002	2003	2004	2005	2006	2007	2008	2009
Estimate	NA	NA	NA	NA	NA	NA	NA	NA	NA	NA	NA	NA	NA
Reported	NA	NA	NA	NA	NA	NA	NA	NA	NA	NA	NA	NA	NA
Official	NA	NA	NA	NA	NA	NA	NA	NA	NA	NA	NA	NA	NA
Administrative	NA	NA	NA	NA	NA	NA	NA	NA	NA	NA	NA	NA	NA
Survey	NA	NA	NA	NA	NA	NA	NA	NA	NA	NA	NA	NA	NA

Further information and estimates for 1980-1996 are available at:

http://www.childinfo.org/immunization_countryreports.html

http://www.who.int/immunization_monitoring/routine/immunization_coverage/en/index4.html

Solomon Islands

WHO/UNICEF Estimates of Protection at Birth (PAB) against tetanus

In countries where tetanus is recommended for girls and women coverage is usually reported as "TT2+", i.e. the proportion of (pregnant) women who have received their second or superior TT dose in a given year. TT2 + coverage, however, can under-represent the actual proportion of births that are protected against tetanus as it does not include women who have previously received protective doses, women who received one dose without documentation of previous doses, and women who received doses in TT (or Td) supplemental immunization activities (SIA). In addition, girls who have received DTP in their childhood and are entering childbearing age, may be protected with TT booster doses.

WHO and UNICEF have developed a model that takes into account the above scenarios, and calculates the proportion of births in a given year that can be considered as having been protected against tetanus - "Protection at Birth".

In this model, annual cohorts of women are followed from infancy through their life. A proportion receive DTP in infancy (estimated based on the WHO-UNICEF estimates of DTP3 coverage). In addition some of these women also receive TT through routine services when they are pregnant and may also receive TT during SIAs. The model also adjusts reported data, taking into account coverage patterns in other years, and/or results available through surveys. The duration of protection is then calculated, based on WHO estimates of the duration of protection by doses ever received. The proportion of births that are protected against tetanus as a result of maternal immunization reflects the tetanus immunization received by the mother throughout her life rather than simply the TT immunizations received during the current pregnancy.

Year	PAB coverage estimate (%)
1997	75
1998	75
1999	75
2000	75
2001	75
2002	74
2003	78
2004	82
2005	74
2006	74
2007	84
2008	85
2009	85

¹ This model is described in: Griffiths U., Wolfson L., Quddus A., Younus M., Hafiz R.. Incremental cost-effectiveness of supplementary immunization activities to prevent neo-natal tetanus in Pakistan. Bulletin of the World Health Organization 2004; 82:643-651.