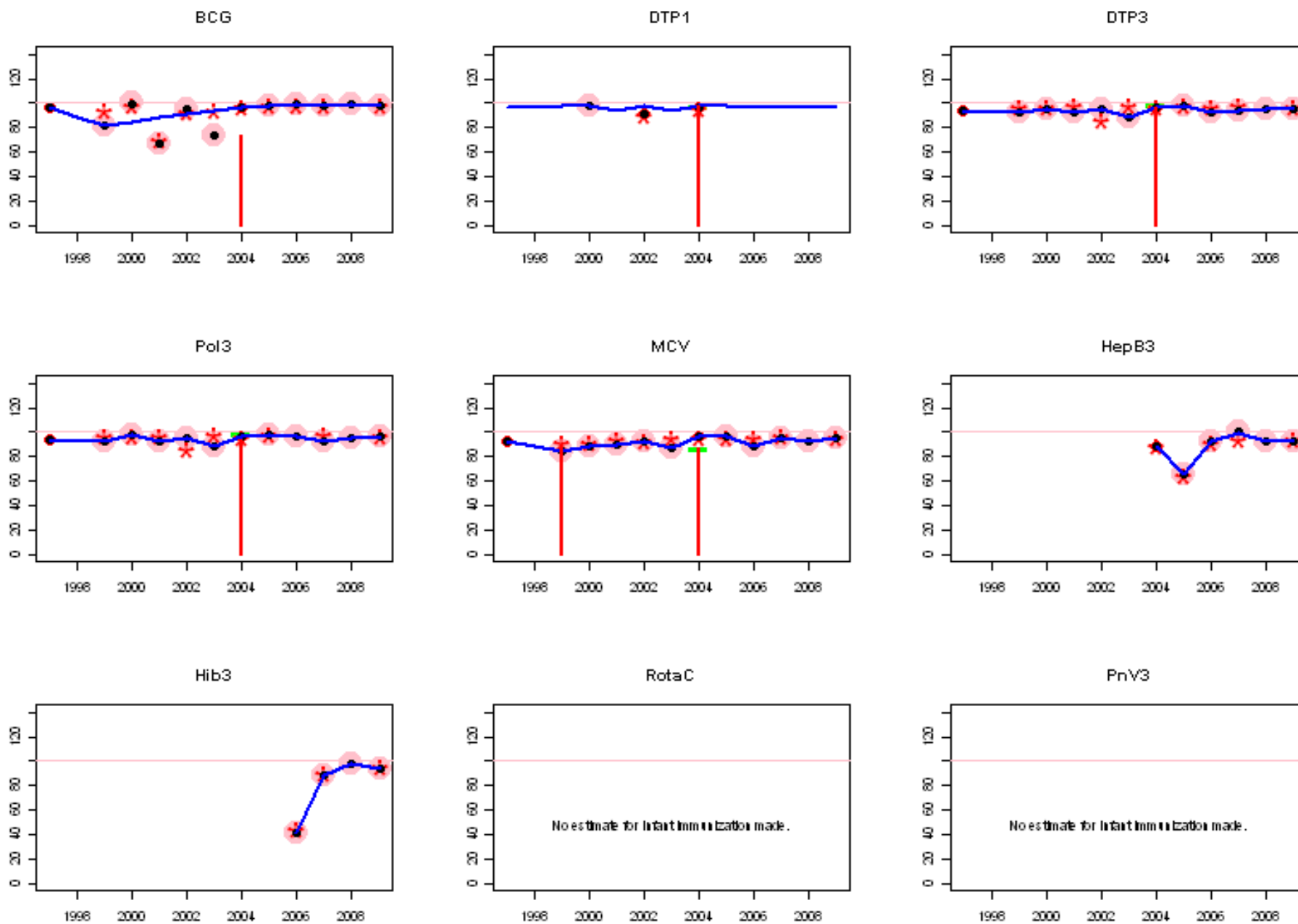
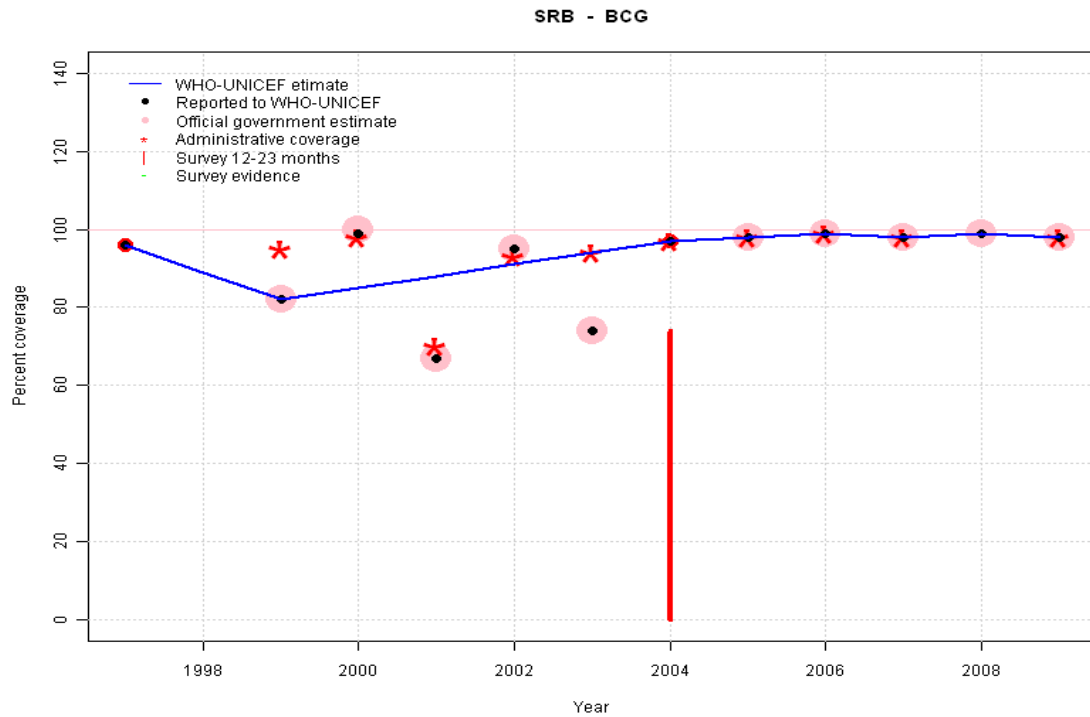


Serbia: WHO and UNICEF estimates of immunization coverage, 1997 - 2009



# Serbia - BCG



	1997	1998	1999	2000	2001	2002	2003	2004	2005	2006	2007	2008	2009
Estimate	96	89	82	85	88	91	94	97	98	99	98	99	98
Reported	96	NA	82	99	67	95	74	97	98	99	98	99	98
Official	NA	NA	82	100	67	95	74	NA	98	99	98	99	98
Administrative	NA	NA	95	98	70	93	94	97	98	99	98	NA	98
Survey	NA	NA	NA	NA	NA	NA	NA	NA	NA	NA	NA	NA	NA

## Description:

1997: Legacy estimate.

1998: Estimate based on trend in reported data. Missing or ignored reported value estimated by interpolation between reported values of 96 percent in 1997 and 82 percent in 1999.

1999: Estimate based on reported data.

2000: Estimate based on trend in reported data. Missing or ignored reported value estimated by interpolation between reported values of 82 percent in 1999 and 97 percent in 2004. 2000 reported data (99 percent) inconsistent with data from other years.

2001: Estimate based on trend in reported data. Missing or ignored reported value estimated by interpolation between reported values of 82 percent in 1999 and 97 percent in 2004. 2001 reported data (67 percent) inconsistent with data from other years.

2002: Estimate based on trend in reported data. Missing or ignored reported value estimated by interpolation between reported values of 82 percent in 1999 and 97 percent in 2004. 2002 reported data (95 percent) inconsistent with data from other years.

2003: Estimate based on trend in reported data. Missing or ignored reported value estimated by interpolation between reported values of 82 percent in 1999 and 97 percent in 2004. 2003 reported data (74 percent) inconsistent with data from other years.

2004: Estimate based on reported data. Survey results of 74 percent ignored by working group. Survey results for BCG not consistent with results from other antigens.

2005: Estimate based on reported data. Estimates do not include Montenegro and Kosovo.

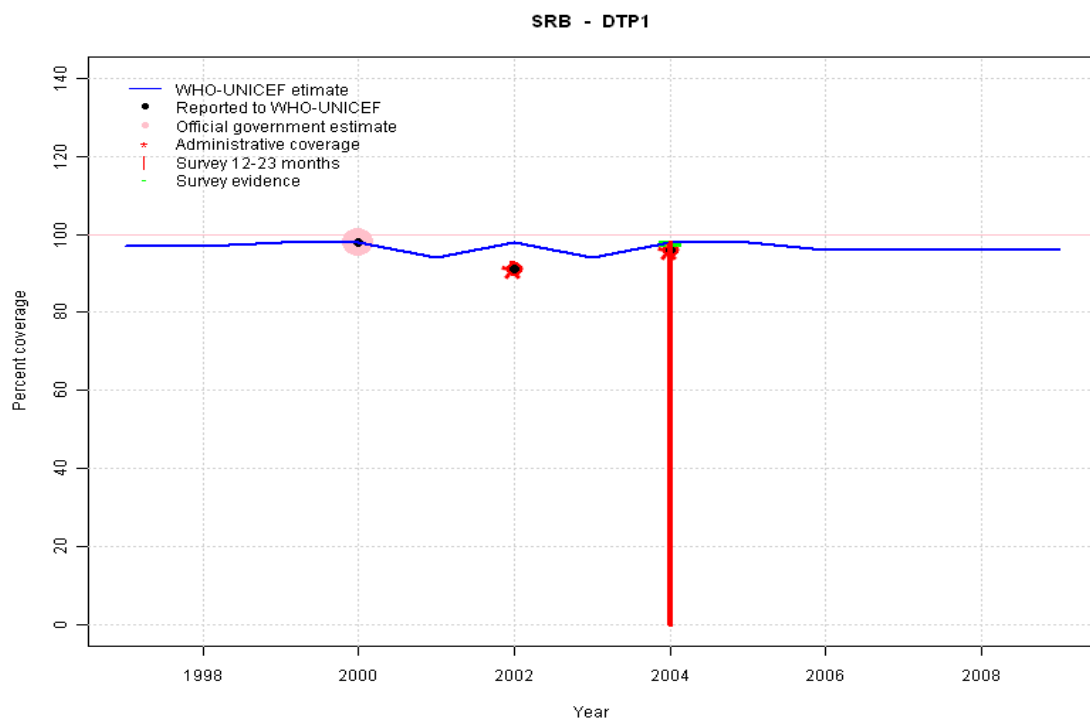
2006: Estimate based on reported data. Estimates do not include Montenegro and Kosovo.

2007: Estimate based on reported data. Estimates do not include Montenegro and Kosovo.

2008: Estimate based on reported data. Estimates do not include Montenegro and Kosovo.

2009: Estimate based on reported data. Estimates do not include Montenegro and Kosovo.

# Serbia - DTP1

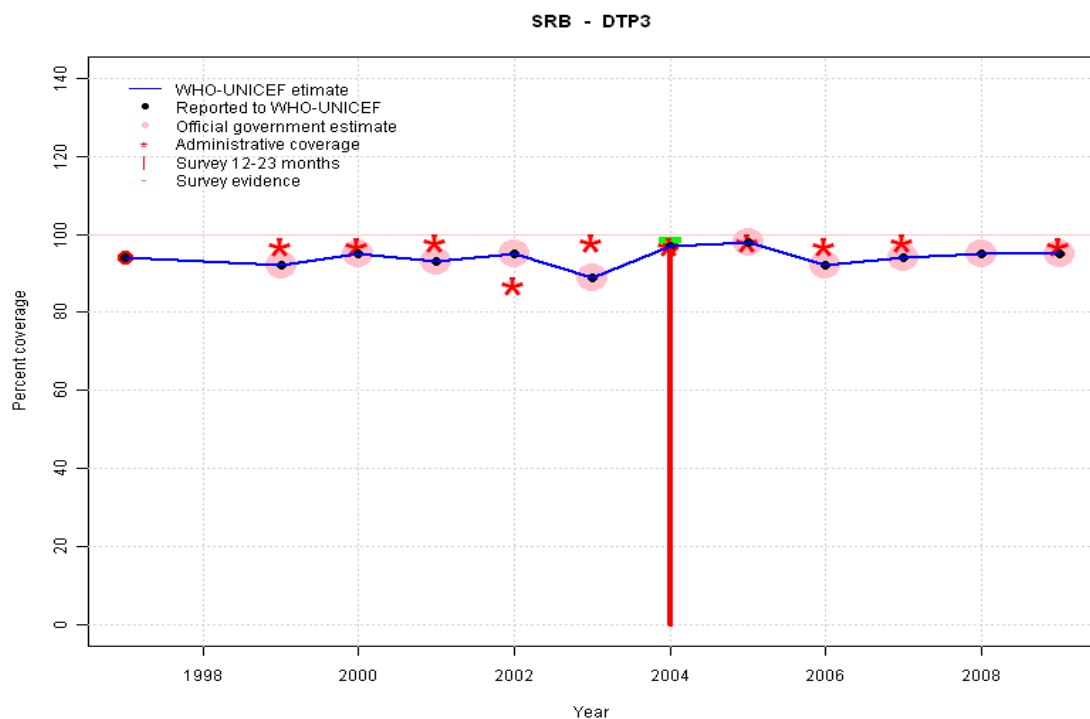


	1997	1998	1999	2000	2001	2002	2003	2004	2005	2006	2007	2008	2009
Estimate	97	97	98	98	94	98	94	98	98	96	96	96	96
Reported	NA	NA	NA	98	NA	91	NA	96	NA	NA	NA	NA	NA
Official	NA	NA	NA	98	NA	NA	NA	NA	NA	NA	NA	NA	NA
Administrative	NA	NA	NA	NA	NA	91	NA	96	NA	NA	NA	NA	NA
Survey	NA	NA	NA	NA	NA	NA	NA	98	NA	NA	NA	NA	NA

## Description:

- 1997: Legacy estimate.
- 1998: Reported data (98 percent) calibrated to 1997 and 2004 levels. Missing or ignored reported value estimated by extrapolation from 2000 reported value of 98 percent.
- 1999: Reported data (98 percent) calibrated to 1997 and 2004 levels. Missing or ignored reported value estimated by extrapolation from 2000 reported value of 98 percent.
- 2000: Reported data (98 percent) calibrated to 1997 and 2004 levels.
- 2001: Reported data (95 percent) calibrated to 1997 and 2004 levels. Missing or ignored reported value estimated by interpolation between reported values of 98 percent in 2000 and 91 percent in 2002.
- 2002: Estimated DTP3 greater than estimated DTP1; DTP1 estimate based on the relationship between DTP1 and DTP3 from 282 surveys.
- 2003: Reported data (94 percent) calibrated to 1997 and 2004 levels. Missing or ignored reported value estimated by interpolation between reported values of 91 percent in 2002 and 96 percent in 2004.
- 2004: Estimated DTP3 greater than estimated DTP1; DTP1 estimate based on the relationship between DTP1 and DTP3 from 282 surveys.
- 2005: Estimated DTP3 greater than estimated DTP1; DTP1 estimate based on the relationship between DTP1 and DTP3 from 282 surveys.
- 2006: Estimate based on trend in reported data. Missing or ignored reported value estimated by extrapolation from 2004 reported value of 96 percent. Estimates do not include Montenegro and Kosovo.
- 2007: Estimate based on trend in reported data. Missing or ignored reported value estimated by extrapolation from 2004 reported value of 96 percent. Estimates do not include Montenegro and Kosovo.
- 2008: Estimate based on trend in reported data. Missing or ignored reported value estimated by extrapolation from 2004 reported value of 96 percent. Estimates do not include Montenegro and Kosovo.
- 2009: Estimate based on trend in reported data. Missing or ignored reported value estimated by extrapolation from 2004 reported value of 96 percent. Estimates do not include Montenegro and Kosovo.

# Serbia - DTP3

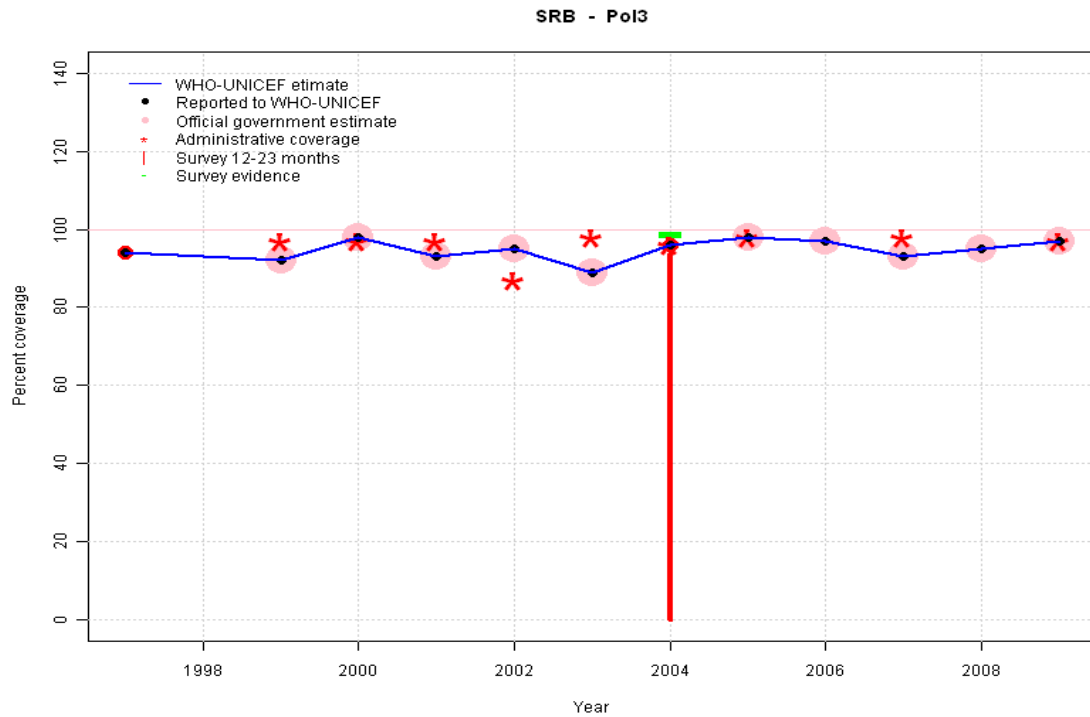


	1997	1998	1999	2000	2001	2002	2003	2004	2005	2006	2007	2008	2009
Estimate	94	93	92	95	93	95	89	97	98	92	94	95	95
Reported	94	NA	92	95	93	95	89	97	98	92	94	95	95
Official	NA	NA	92	95	93	95	89	NA	98	92	94	95	95
Administrative	NA	NA	97	97	98	87	98	97	98	97	98	NA	97
Survey	NA	NA	NA	NA	NA	NA	NA	99	NA	NA	NA	NA	NA

## Description:

- 1997: Legacy estimate.
- 1998: Estimate based on trend in reported data. Missing or ignored reported value estimated by interpolation between reported values of 94 percent in 1997 and 92 percent in 1999.
- 1999: Estimate based on reported data.
- 2000: Estimate based on reported data.
- 2001: Estimate based on reported data.
- 2002: Estimate based on reported data.
- 2003: Estimate based on reported data.
- 2004: Estimate based on reported data (97 percent) confirmed by survey (99 percent). Survey results (96 percent) adjusted for recall bias to 99 percent based on first dose card or history coverage (98 percent) and documented drop-out between first (73 percent) and third (78 percent) doses.
- 2005: Estimate based on reported data. Estimates do not include Montenegro and Kosovo.
- 2006: Estimate based on reported data. Estimates do not include Montenegro and Kosovo.
- 2007: Estimate based on reported data. Estimates do not include Montenegro and Kosovo.
- 2008: Estimate based on reported data. Estimates do not include Montenegro and Kosovo.
- 2009: Estimate based on reported data. Estimates do not include Montenegro and Kosovo.

# Serbia - Pol3



	1997	1998	1999	2000	2001	2002	2003	2004	2005	2006	2007	2008	2009
Estimate	94	93	92	98	93	95	89	96	98	97	93	95	97
Reported	94	NA	92	98	93	95	89	96	98	97	93	95	97
Official	NA	NA	92	98	93	95	89	NA	98	97	93	95	97
Administrative	NA	NA	97	97	97	87	98	96	98	NA	98	NA	97
Survey	NA	NA	NA	NA	NA	NA	NA	99	NA	NA	NA	NA	NA

## Description:

1997: Legacy estimate.

1998: Estimate based on trend in reported data. Missing or ignored reported value estimated by interpolation between reported values of 94 percent in 1997 and 92 percent in 1999.

1999: Estimate based on reported data.

2000: Estimate based on reported data.

2001: Estimate based on reported data.

2002: Estimate based on reported data.

2003: Estimate based on reported data.

2004: Estimate based on reported data (96 percent) confirmed by survey (99 percent). Survey results (94 percent) adjusted for recall bias to 99 percent based on first dose card or history coverage (97 percent) and documented drop-out between first (70 percent) and third (75 percent) doses.

2005: Estimate based on reported data. Estimates do not include Montenegro and Kosovo.

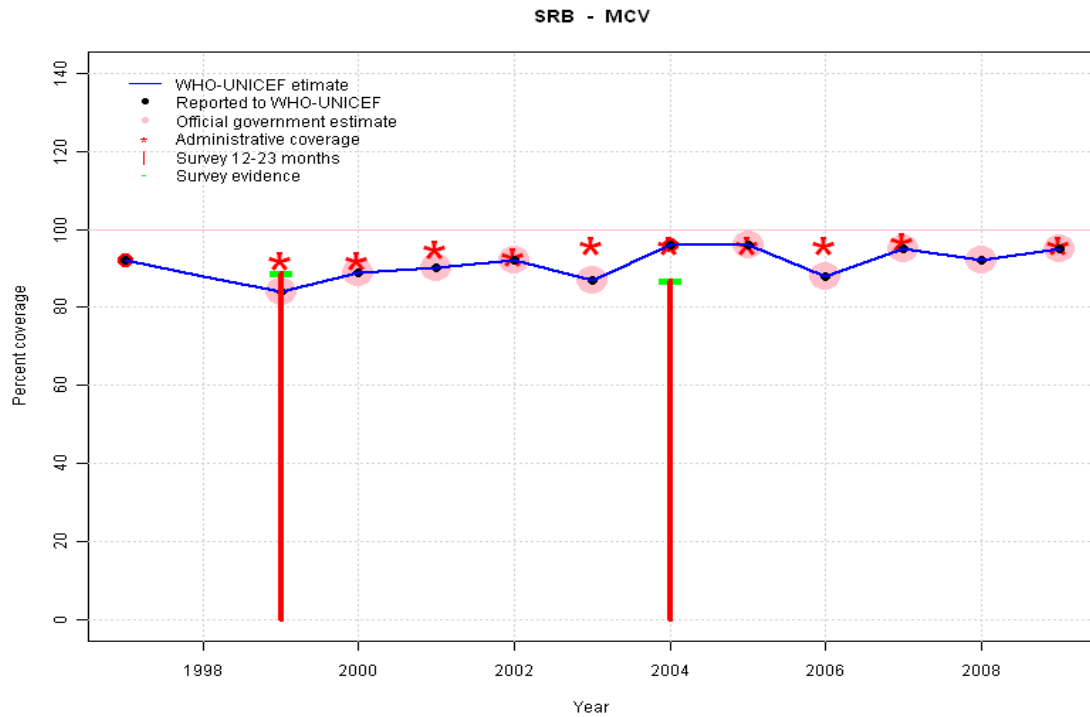
2006: Estimate based on reported data. Estimates do not include Montenegro and Kosovo.

2007: Estimate based on reported data. Estimates do not include Montenegro and Kosovo.

2008: Estimate based on reported data. Estimates do not include Montenegro and Kosovo.

2009: Estimate based on reported data. Estimates do not include Montenegro and Kosovo.

# Serbia - MCV



	1997	1998	1999	2000	2001	2002	2003	2004	2005	2006	2007	2008	2009
Estimate	92	88	84	89	90	92	87	96	96	88	95	92	95
Reported	92	NA	84	89	90	92	87	96	96	88	95	92	95
Official	NA	NA	84	89	90	92	87	NA	96	88	95	92	95
Administrative	NA	NA	92	92	95	93	96	96	96	96	97	NA	96
Survey	NA	NA	89	NA	NA	NA	NA	87	NA	NA	NA	NA	NA

## Description:

1997: Legacy estimate.

1998: Estimate based on trend in reported data. Missing or ignored reported value estimated by interpolation between reported values of 92 percent in 1997 and 84 percent in 1999.

1999: Estimate based on reported data (84 percent) confirmed by survey (89 percent).

2000: Estimate based on reported data.

2001: Estimate based on reported data.

2002: Estimate based on reported data.

2003: Estimate based on reported data.

2004: Estimate based on reported data (96 percent) confirmed by survey (87 percent).

2005: Estimate based on reported data. Estimates do not include Montenegro and Kosovo.

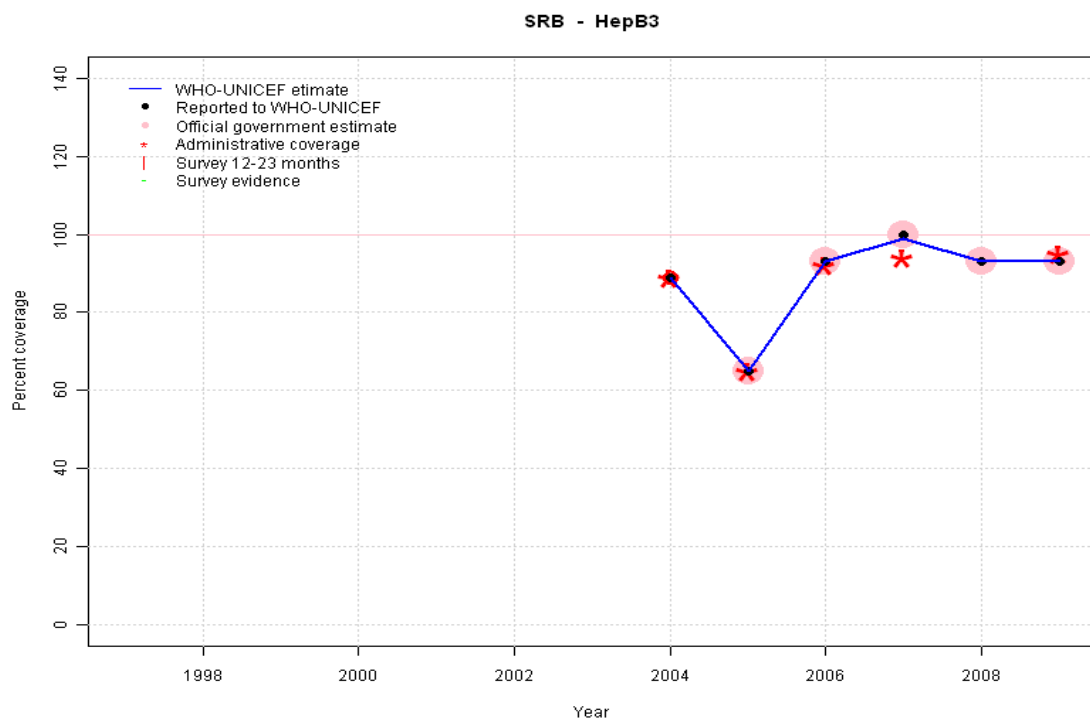
2006: Estimate based on reported data. Estimates do not include Montenegro and Kosovo.

2007: Estimate based on reported data. Estimates do not include Montenegro and Kosovo.

2008: Estimate based on reported data. Estimates do not include Montenegro and Kosovo.

2009: Estimate based on reported data. Estimates do not include Montenegro and Kosovo.

# Serbia - HepB3



## Description:

2004: Estimate based on reported data.

2005: Estimate based on reported data. Estimates do not include Montenegro and Kosovo. HepB partially introduced in 2002 nationally in 2006 reporting started in 2004. Vaccine presentation is monovalent HepB .

2006: Estimate based on reported data. Estimates do not include Montenegro and Kosovo.

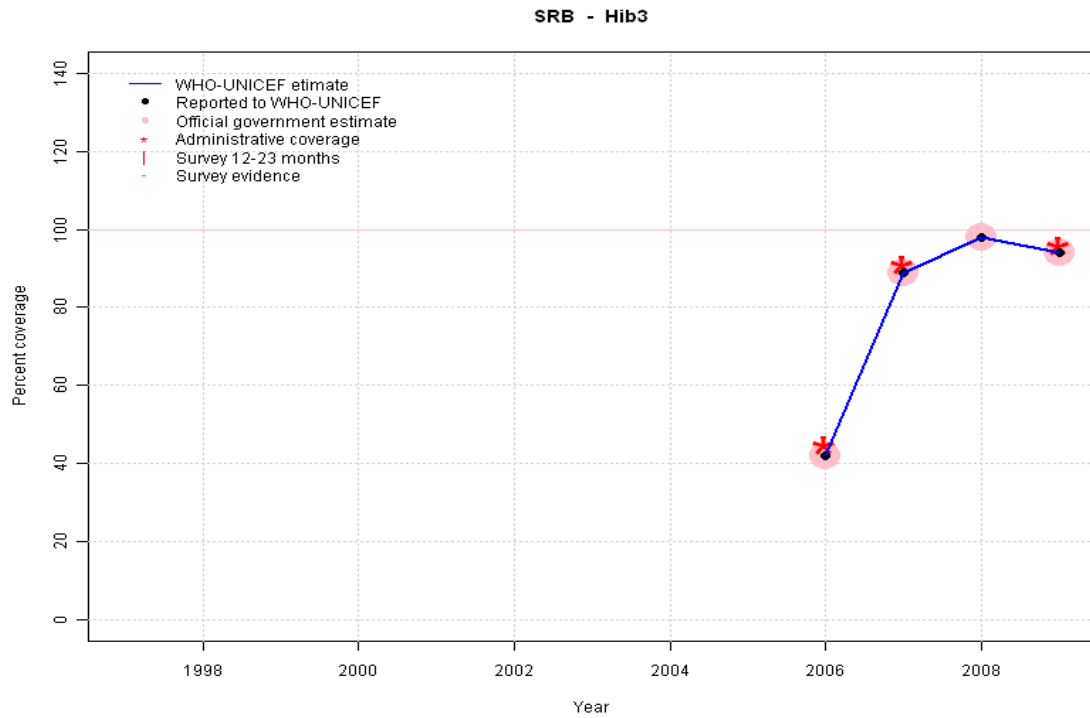
2007: Estimate based on reported data. Estimates do not include Montenegro and Kosovo.

2008: Estimate based on reported data. Estimates do not include Montenegro and Kosovo.

2009: Estimate based on reported data. Estimates do not include Montenegro and Kosovo.

	1997	1998	1999	2000	2001	2002	2003	2004	2005	2006	2007	2008	2009
Estimate	NA	NA	NA	NA	NA	NA	NA	89	65	93	99	93	93
Reported	NA	NA	NA	NA	NA	NA	NA	89	65	93	100	93	93
Official	NA	NA	NA	NA	NA	NA	NA	NA	65	93	100	93	93
Administrative	NA	NA	NA	NA	NA	NA	NA	89	65	92	94	NA	95
Survey	NA	NA	NA	NA	NA	NA	NA	NA	NA	NA	NA	NA	NA

# Serbia - Hib3

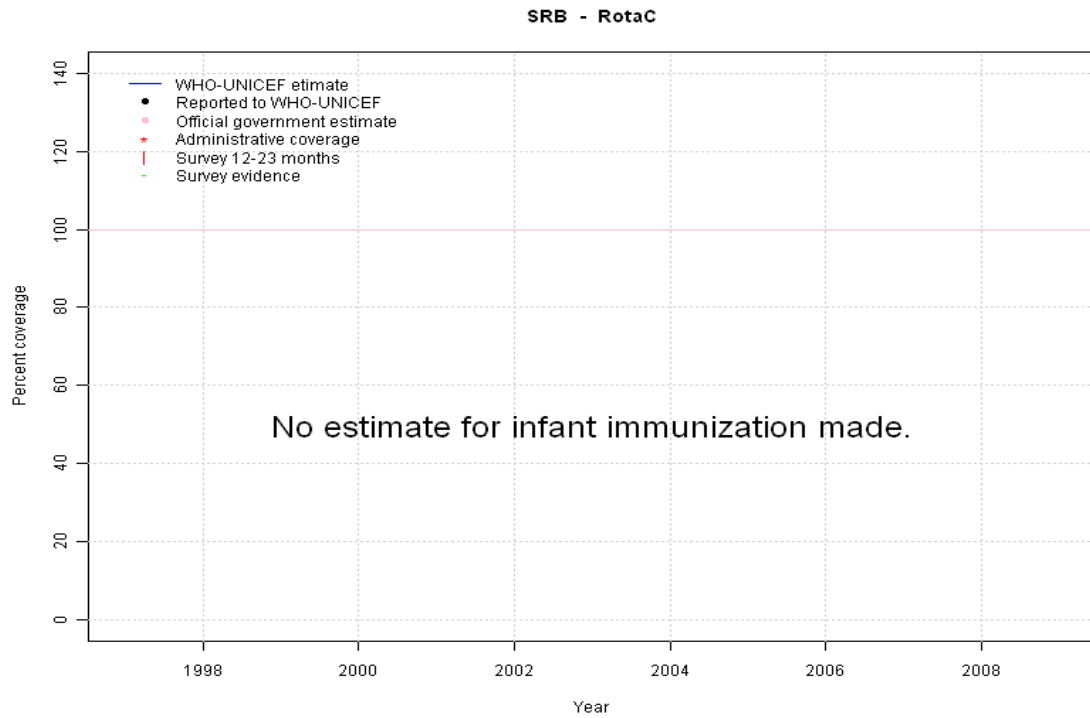


## Description:

- 2006: Estimate based on reported data. Hib introduced in 2006 Vaccine presentation is Hib mono. Estimates do not include Montenegro and Kosovo.
- 2007: Estimate based on reported data. Estimates do not include Montenegro and Kosovo.
- 2008: Estimate based on reported data. Estimates do not include Montenegro and Kosovo.
- 2009: Estimate based on reported data. Estimates do not include Montenegro and Kosovo.

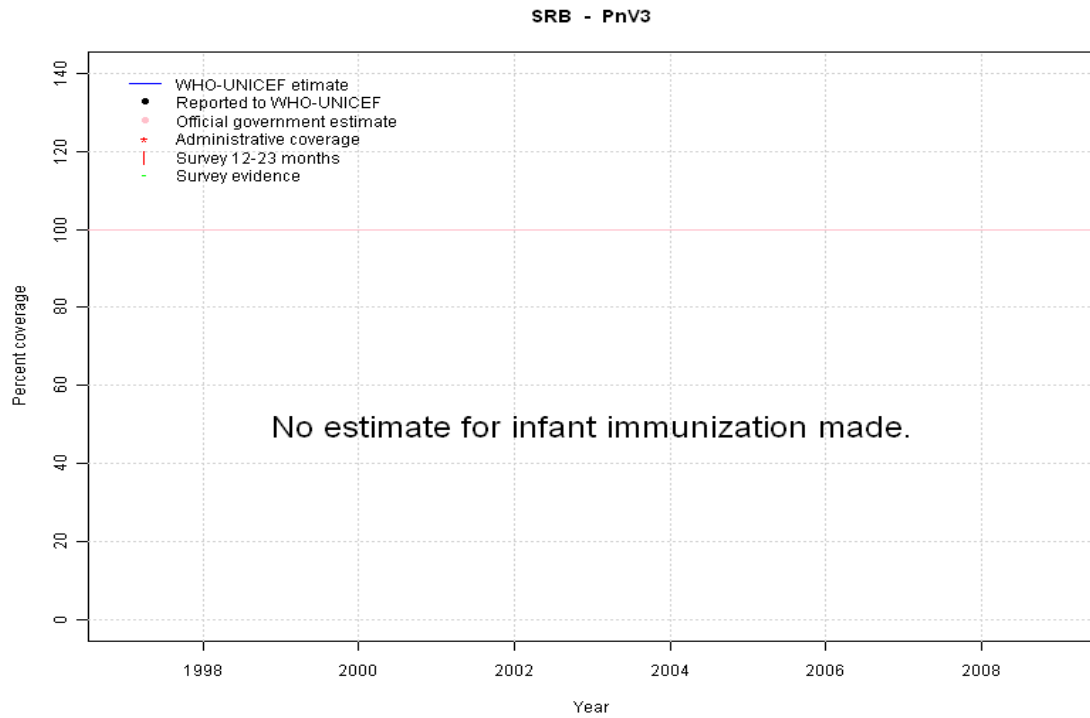
	1997	1998	1999	2000	2001	2002	2003	2004	2005	2006	2007	2008	2009
Estimate	NA	NA	NA	NA	NA	NA	NA	NA	NA	42	89	98	94
Reported	NA	NA	NA	NA	NA	NA	NA	NA	NA	42	89	98	94
Official	NA	NA	NA	NA	NA	NA	NA	NA	NA	42	89	98	94
Administrative	NA	NA	NA	NA	NA	NA	NA	NA	NA	45	91	NA	96
Survey	NA	NA	NA	NA	NA	NA	NA	NA	NA	NA	NA	NA	NA

# Serbia - RotaC



	1997	1998	1999	2000	2001	2002	2003	2004	2005	2006	2007	2008	2009
Estimate	NA	NA	NA	NA	NA	NA	NA	NA	NA	NA	NA	NA	NA
Reported	NA	NA	NA	NA	NA	NA	NA	NA	NA	NA	NA	NA	NA
Official	NA	NA	NA	NA	NA	NA	NA	NA	NA	NA	NA	NA	NA
Administrative	NA	NA	NA	NA	NA	NA	NA	NA	NA	NA	NA	NA	NA
Survey	NA	NA	NA	NA	NA	NA	NA	NA	NA	NA	NA	NA	NA

# Serbia - PnV3



	1997	1998	1999	2000	2001	2002	2003	2004	2005	2006	2007	2008	2009
Estimate	NA	NA	NA	NA	NA	NA	NA	NA	NA	NA	NA	NA	NA
Reported	NA	NA	NA	NA	NA	NA	NA	NA	NA	NA	NA	NA	NA
Official	NA	NA	NA	NA	NA	NA	NA	NA	NA	NA	NA	NA	NA
Administrative	NA	NA	NA	NA	NA	NA	NA	NA	NA	NA	NA	NA	NA
Survey	NA	NA	NA	NA	NA	NA	NA	NA	NA	NA	NA	NA	NA

# Serbia - survey details

## 2004 Serbia Multiple Indicator Cluster Survey 2005

Vaccine	Confirmation method	Coverage	Age cohort	Sample	Cards seen
BCG	C or H <12 months	74	18-29 m	782	71
BCG	Card	44	18-29 m	782	71
BCG	Card or History	74	18-29 m	782	71
BCG	History	30	18-29 m	782	71
DTP1	History	26	18-29 m	782	71
DTP1	C or H <12 months	97	18-29 m	782	71
DTP1	Card	73	18-29 m	782	71
DTP1	Card or History	98	18-29 m	782	71
DTP3	Card	78	18-29 m	782	71
DTP3	Card or History	96	18-29 m	782	71
DTP3	History	18	18-29 m	782	71
DTP3	C or H <12 months	90	18-29 m	782	71
MCV	Card	64	18-29 m	782	71
MCV	Card or History	87	18-29 m	782	71
MCV	History	22	18-29 m	782	71
MCV	C or H <12 months	84	18-29 m	782	71
Pol1	Card or History	97	18-29 m	782	71

Pol1	History	27	18-29 m	782	71
Pol1	Card	70	18-29 m	782	71
Pol1	C or H <12 months	95	18-29 m	782	71
Pol3	History	19	18-29 m	782	71
Pol3	Card	75	18-29 m	782	71
Pol3	Card or History	94	18-29 m	782	71
Pol3	C or H <12 months	88	18-29 m	782	71

## 1999 Federal Republic of Yugoslavia, Multiple Indicator Cluster Survey II 2000 (excluding Kosovo)

Vaccine	Confirmation method	Coverage	Age cohort	Sample	Cards seen
BCG	C or H <12 months	100	12-23 m	341	76
DTP1	C or H <12 months	98	12-23 m	341	76
DTP3	C or H <12 months	95	12-23 m	341	76
MCV	Card or History	89	24-35 m	341	76
Pol1	C or H <12 months	98	12-23 m	341	76
Pol3	C or H <12 months	98	12-23 m	341	76

Further information and estimates for 1980-1996 are available at:

[http://www.childinfo.org/immunization\\_countryreports.html](http://www.childinfo.org/immunization_countryreports.html)

[http://www.who.int/immunization\\_monitoring/routine/immunization\\_coverage/en/index4.html](http://www.who.int/immunization_monitoring/routine/immunization_coverage/en/index4.html)