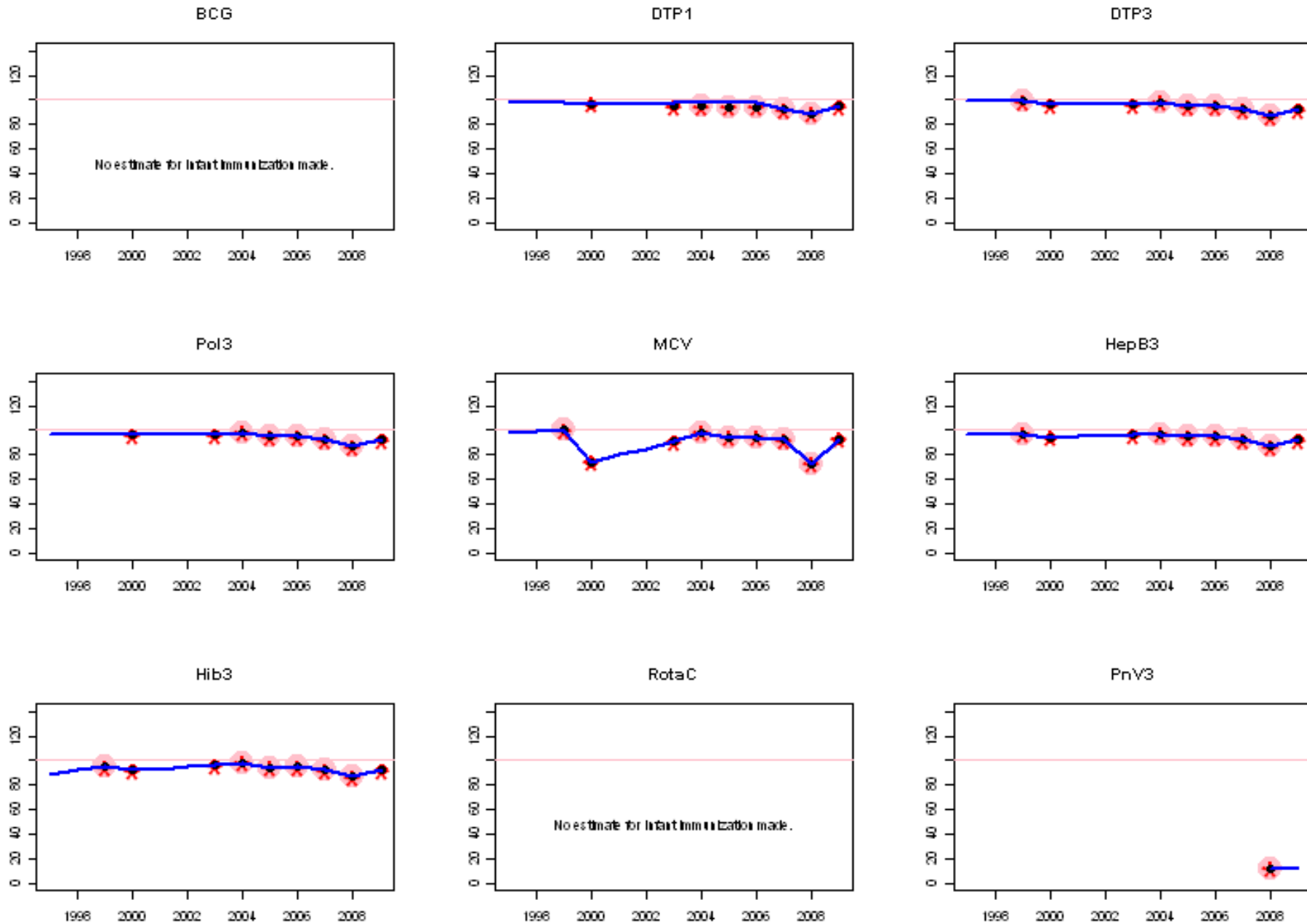
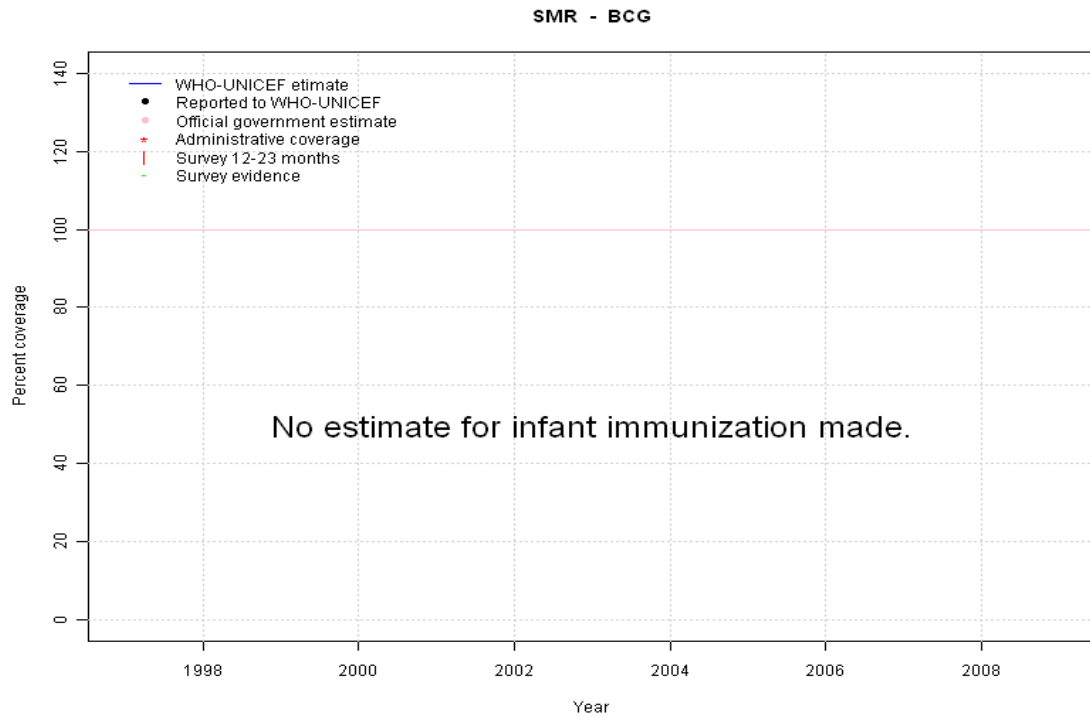


San Marino: WHO and UNICEF estimates of immunization coverage, 1997 - 2009



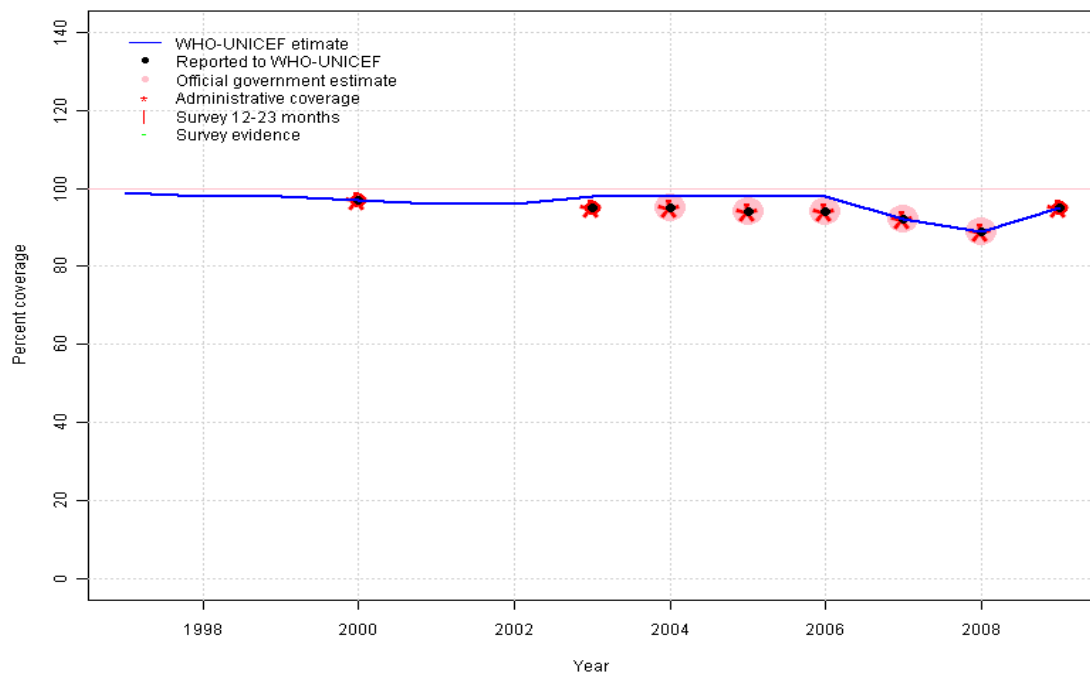
San Marino - BCG



	1997	1998	1999	2000	2001	2002	2003	2004	2005	2006	2007	2008	2009
Estimate	NA	NA	NA	NA	NA	NA	NA	NA	NA	NA	NA	NA	NA
Reported	NA	NA	NA	NA	NA	NA	NA	NA	NA	NA	NA	NA	NA
Official	NA	NA	NA	NA	NA	NA	NA	NA	NA	NA	NA	NA	NA
Administrative	NA	NA	NA	NA	NA	NA	NA	NA	NA	NA	NA	NA	NA
Survey	NA	NA	NA	NA	NA	NA	NA	NA	NA	NA	NA	NA	NA

San Marino - DTP1

SMR - DTP1



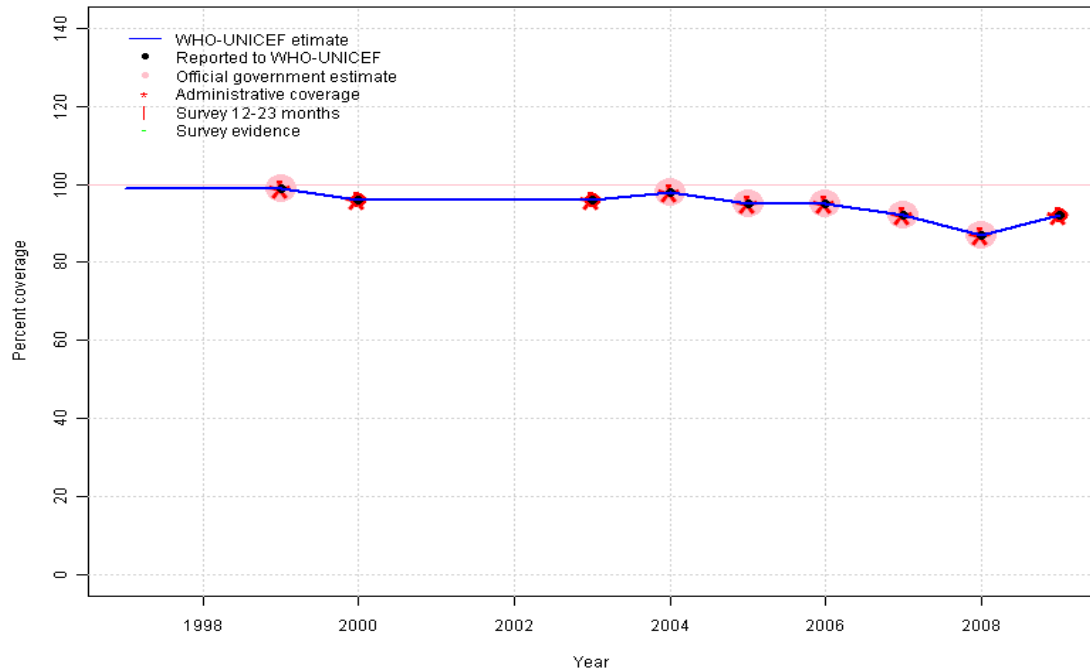
Description:

- 1997: Legacy estimate.
- 1998: Estimated DTP3 greater than estimated DTP1; DTP1 estimate based on the relationship between DTP1 and DTP3 from 282 surveys.
- 1999: Estimated DTP3 greater than estimated DTP1; DTP1 estimate based on the relationship between DTP1 and DTP3 from 282 surveys.
- 2000: Estimate is based on the reported data.
- 2001: Estimate based on trend in reported data. Missing or ignored reported value estimated by interpolation between reported values of 97 percent in 2000 and 95 percent in 2003.
- 2002: Estimate based on trend in reported data. Missing or ignored reported value estimated by interpolation between reported values of 97 percent in 2000 and 95 percent in 2003.
- 2003: Estimated DTP3 greater than estimated DTP1; DTP1 estimate based on the relationship between DTP1 and DTP3 from 282 surveys.
- 2004: Estimated DTP3 greater than estimated DTP1; DTP1 estimate based on the relationship between DTP1 and DTP3 from 282 surveys.
- 2005: Estimated DTP3 greater than estimated DTP1; DTP1 estimate based on the relationship between DTP1 and DTP3 from 282 surveys.
- 2006: Estimated DTP3 greater than estimated DTP1; DTP1 estimate based on the relationship between DTP1 and DTP3 from 282 surveys.
- 2007: Estimate based on reported data.
- 2008: Estimate based on reported data.
- 2009: Estimate based on reported data.

	1997	1998	1999	2000	2001	2002	2003	2004	2005	2006	2007	2008	2009
Estimate	99	98	98	97	96	96	98	98	98	98	92	89	95
Reported	NA	NA	NA	97	NA	NA	95	95	94	94	92	89	95
Official	NA	NA	NA	NA	NA	NA	NA	95	94	94	92	89	NA
Administrative	NA	NA	NA	97	NA	NA	95	95	94	94	92	89	95
Survey	NA	NA	NA	NA	NA	NA	NA	NA	NA	NA	NA	NA	NA

San Marino - DTP3

SMR - DTP3



Description:

1997: Legacy estimate.

1998: Estimate based on trend in reported data. Missing or ignored reported value estimated by extrapolation from 1999 reported value of 99 percent.

1999: Estimate is based on the reported data.

2000: Estimate based on reported data.

2001: Estimate based on trend in reported data. Missing or ignored reported value estimated by interpolation between reported values of 96 percent in 2000 and 96 percent in 2003.

2002: Estimate based on trend in reported data. Missing or ignored reported value estimated by interpolation between reported values of 96 percent in 2000 and 96 percent in 2003.

2003: Estimate based on reported data.

2004: Estimate based on reported data.

2005: Estimate based on reported data.

2006: Estimate based on reported data.

2007: Estimate based on reported data.

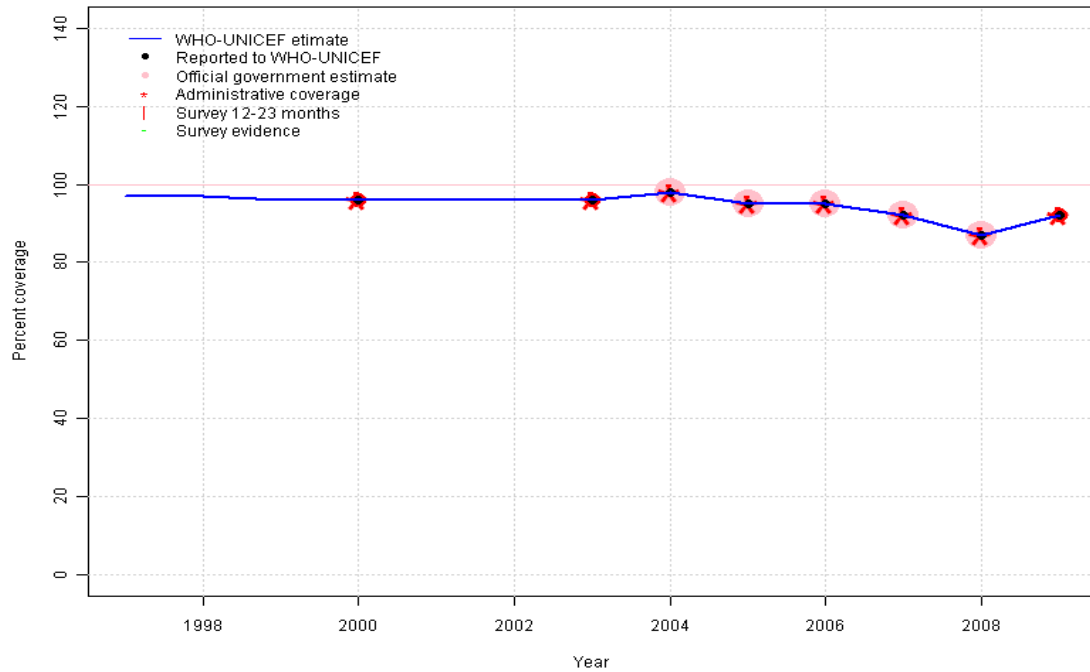
2008: Estimate based on reported data.

2009: Estimate based on reported data.

	1997	1998	1999	2000	2001	2002	2003	2004	2005	2006	2007	2008	2009
Estimate	99	99	99	96	96	96	96	98	95	95	92	87	92
Reported	NA	NA	99	96	NA	NA	96	98	95	95	92	87	92
Official	NA	NA	99	NA	NA	NA	NA	98	95	95	92	87	NA
Administrative	NA	NA	99	96	NA	NA	96	98	95	95	92	87	92
Survey	NA	NA	NA	NA	NA	NA	NA	NA	NA	NA	NA	NA	NA

San Marino - Pol3

SMR - Pol3



Description:

1997: Legacy estimate.

1998: Estimate interpolated between 1997 and 2000 estimates.

1999: Estimate interpolated between 1997 and 2000 estimates.

2000: Estimate is based on the reported data.

2001: Estimate based on trend in reported data. Missing or ignored reported value estimated by interpolation between reported values of 96 percent in 2000 and 96 percent in 2003.

2002: Estimate based on trend in reported data. Missing or ignored reported value estimated by interpolation between reported values of 96 percent in 2000 and 96 percent in 2003.

2003: Estimate based on reported data.

2004: Estimate based on reported data.

2005: Estimate based on reported data.

2006: Estimate based on reported data.

2007: Estimate based on reported data.

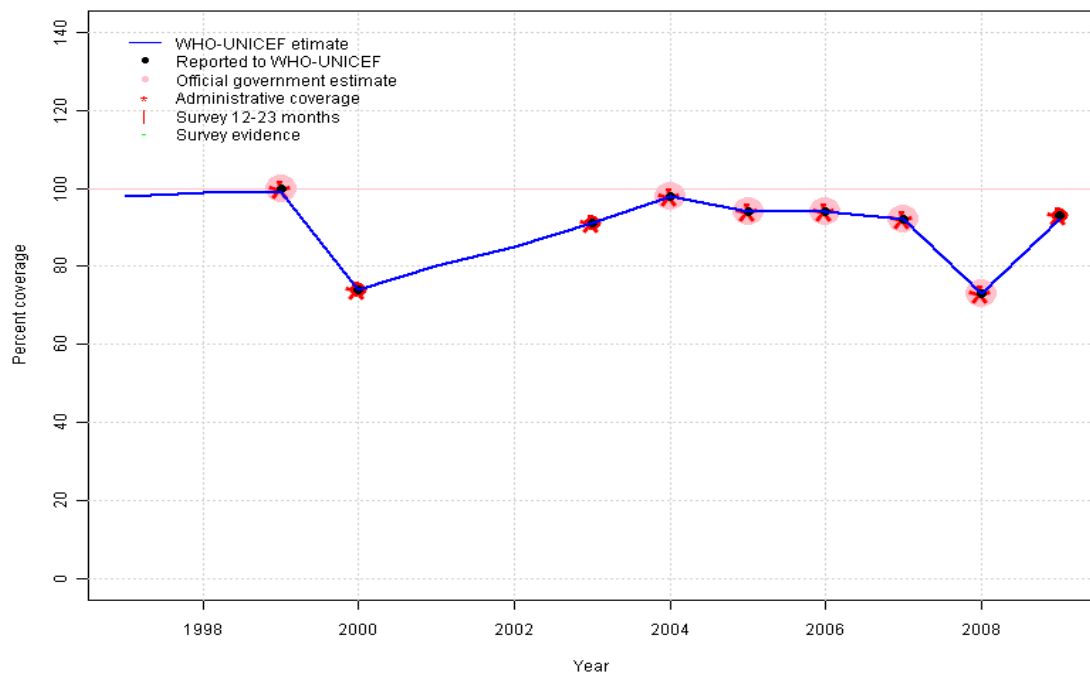
2008: Estimate based on reported data.

2009: Estimate based on reported data.

	1997	1998	1999	2000	2001	2002	2003	2004	2005	2006	2007	2008	2009
Estimate	97	97	96	96	96	96	96	98	95	95	92	87	92
Reported	NA	NA	NA	96	NA	NA	96	98	95	95	92	87	92
Official	NA	NA	NA	NA	NA	NA	NA	98	95	95	92	87	NA
Administrative	NA	NA	NA	96	NA	NA	96	98	95	95	92	87	92
Survey	NA	NA	NA	NA	NA	NA	NA	NA	NA	NA	NA	NA	NA

San Marino - MCV

SMR - MCV



Description:

1997: Legacy estimate.

1998: Estimate interpolated between 1997 and 1999 estimates.

1999: Estimate is based on the reported data.

2000: Estimate is based on the reported data.

2001: Estimate based on trend in reported data. Missing or ignored reported value estimated by interpolation between reported values of 74 percent in 2000 and 91 percent in 2003.

2002: Estimate based on trend in reported data. Missing or ignored reported value estimated by interpolation between reported values of 74 percent in 2000 and 91 percent in 2003.

2003: Estimate based on reported data.

2004: Estimate based on reported data.

2005: Estimate based on reported data.

2006: Estimate based on reported data.

2007: Estimate based on reported data.

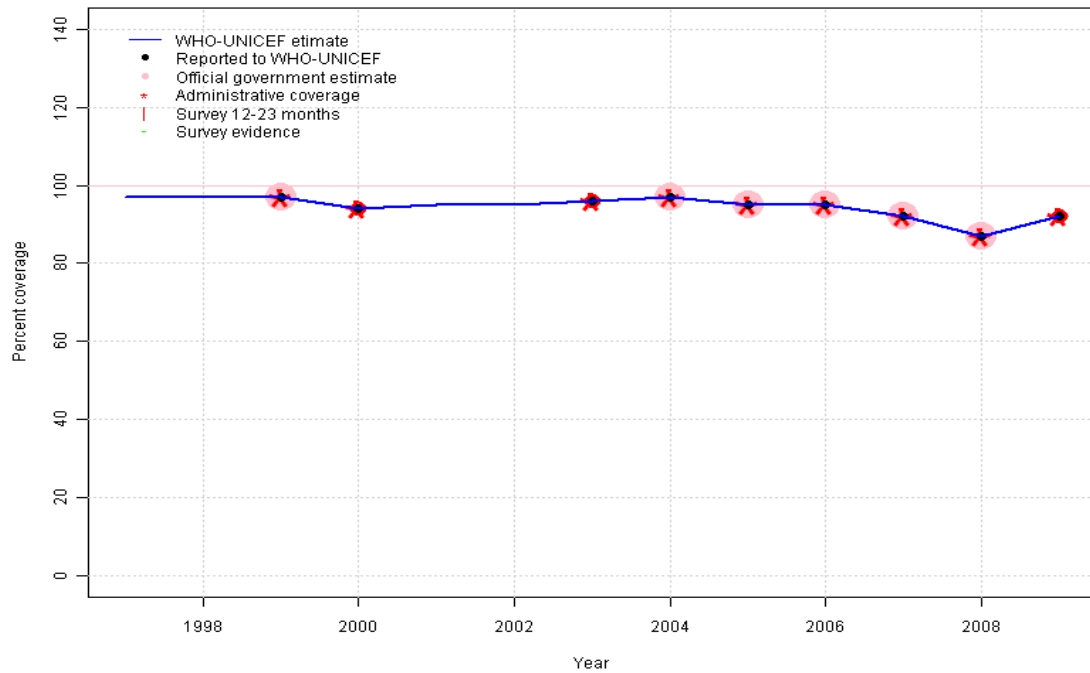
2008: Estimate assigned by working group. Estimate is based on the reported data. 2008 reported data (73 percent) inconsistent with data from other years.

2009: Estimate based on trend in reported data. Missing or ignored reported value estimated by extrapolation from 2007 reported value of 92 percent. 2009 reported data (93 percent) inconsistent with data from other years.

	1997	1998	1999	2000	2001	2002	2003	2004	2005	2006	2007	2008	2009
Estimate	98	99	99	74	80	85	91	98	94	94	92	73	92
Reported	NA	NA	100	74	NA	NA	91	98	94	94	92	73	93
Official	NA	NA	100	NA	NA	NA	NA	98	94	94	92	73	NA
Administrative	NA	NA	100	74	NA	NA	91	98	94	94	92	73	93
Survey	NA	NA	NA	NA	NA	NA	NA	NA	NA	NA	NA	NA	NA

San Marino - HepB3

SMR - HepB3



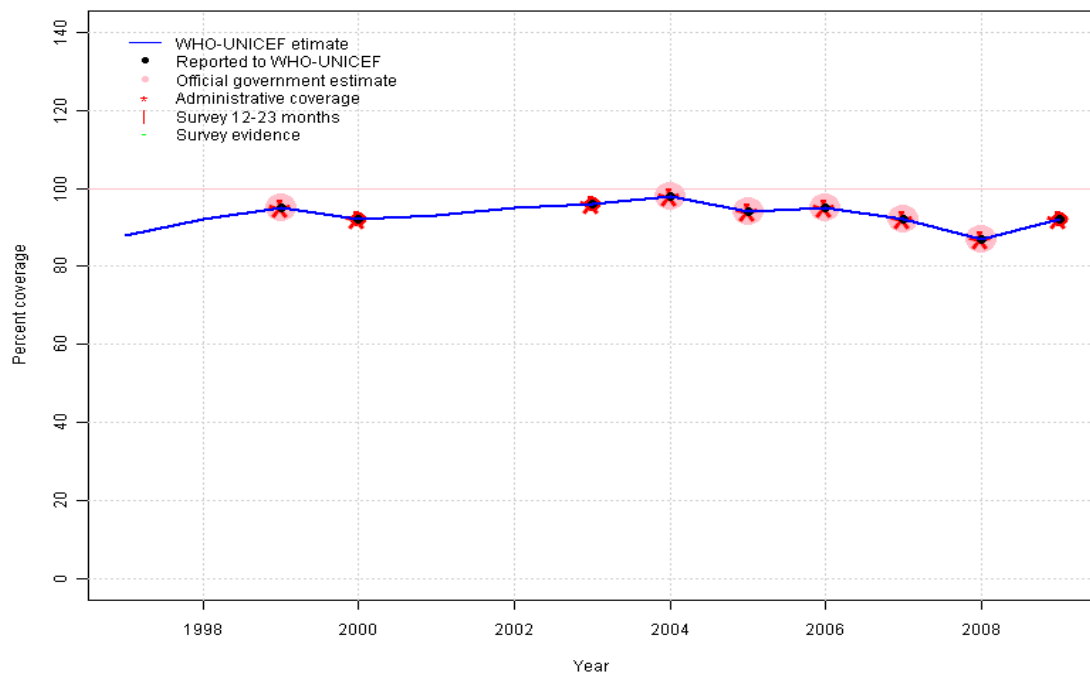
Description:

- 1997: Legacy estimate.
- 1998: Estimate based on trend in reported data. Missing or ignored reported value estimated by extrapolation from 1999 reported value of 97 percent.
- 1999: Estimate is based on the reported data.
- 2000: Estimate based on reported data.
- 2001: Estimate based on trend in reported data. Missing or ignored reported value estimated by interpolation between reported values of 94 percent in 2000 and 96 percent in 2003.
- 2002: Estimate based on trend in reported data. Missing or ignored reported value estimated by interpolation between reported values of 94 percent in 2000 and 96 percent in 2003.
- 2003: Estimate based on reported data.
- 2004: Estimate based on reported data.
- 2005: Estimate based on reported data.
- 2006: Estimate based on reported data.
- 2007: Estimate based on reported data.
- 2008: Estimate based on reported data.
- 2009: Estimate based on reported data.

	1997	1998	1999	2000	2001	2002	2003	2004	2005	2006	2007	2008	2009
Estimate	97	97	97	94	95	95	96	97	95	95	92	87	92
Reported	NA	NA	97	94	NA	NA	96	97	95	95	92	87	92
Official	NA	NA	97	NA	NA	NA	NA	97	95	95	92	87	NA
Administrative	NA	NA	97	94	NA	NA	96	97	95	95	92	87	92
Survey	NA	NA	NA	NA	NA	NA	NA	NA	NA	NA	NA	NA	NA

San Marino - Hib3

SMR - Hib3



Description:

1997: Legacy estimate.

1998: Estimate interpolated between 1997 and 1999 estimates.

1999: Estimate based on reported data.

2000: Estimate based on reported data.

2001: Estimate based on trend in reported data. Missing or ignored reported value estimated by interpolation between reported values of 92 percent in 2000 and 96 percent in 2003.

2002: Estimate based on trend in reported data. Missing or ignored reported value estimated by interpolation between reported values of 92 percent in 2000 and 96 percent in 2003.

2003: Estimate based on reported data.

2004: Estimate based on reported data.

2005: Estimate based on reported data.

2006: Estimate based on reported data.

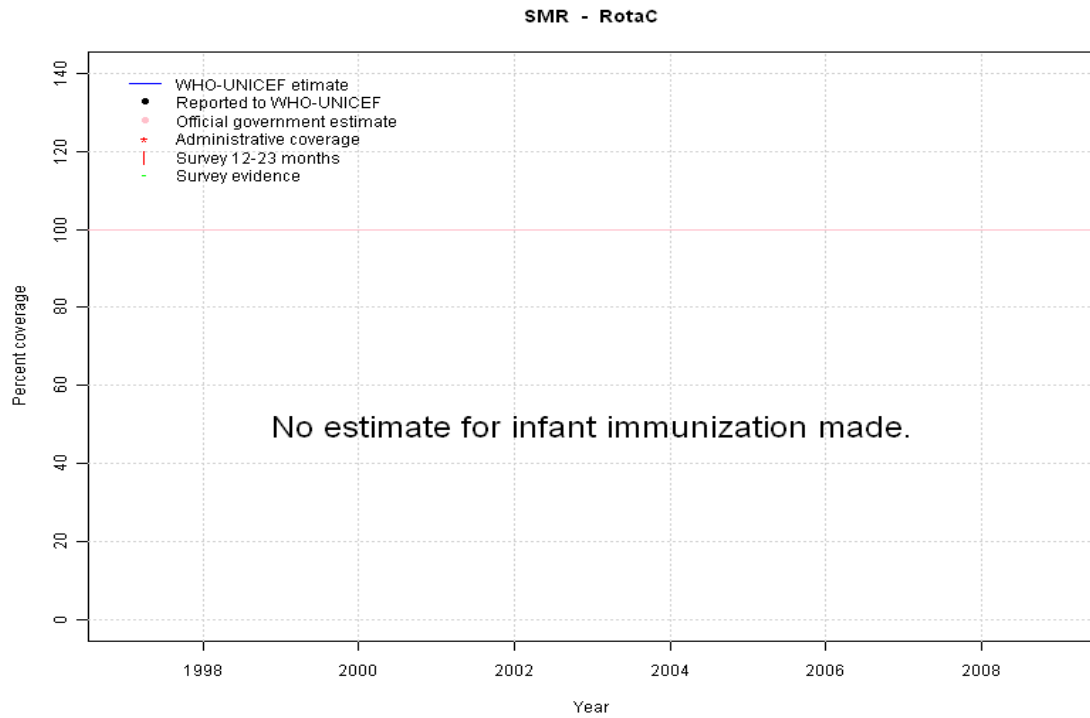
2007: Estimate based on reported data.

2008: Estimate based on reported data.

2009: Estimate based on reported data.

	1997	1998	1999	2000	2001	2002	2003	2004	2005	2006	2007	2008	2009
Estimate	88	92	95	92	93	95	96	98	94	95	92	87	92
Reported	NA	NA	95	92	NA	NA	96	98	94	95	92	87	92
Official	NA	NA	95	NA	NA	NA	NA	98	94	95	92	87	NA
Administrative	NA	NA	95	92	NA	NA	96	98	94	95	92	87	92
Survey	NA	NA	NA	NA	NA	NA	NA	NA	NA	NA	NA	NA	NA

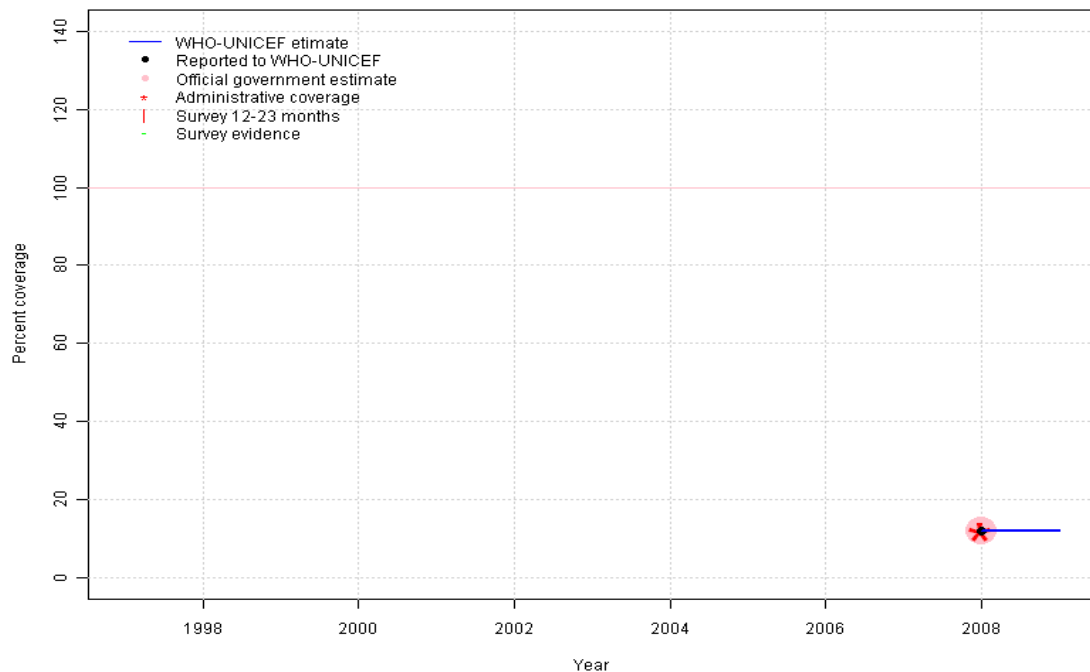
San Marino - RotaC



	1997	1998	1999	2000	2001	2002	2003	2004	2005	2006	2007	2008	2009
Estimate	NA	NA	NA	NA	NA	NA	NA	NA	NA	NA	NA	NA	NA
Reported	NA	NA	NA	NA	NA	NA	NA	NA	NA	NA	NA	NA	NA
Official	NA	NA	NA	NA	NA	NA	NA	NA	NA	NA	NA	NA	NA
Administrative	NA	NA	NA	NA	NA	NA	NA	NA	NA	NA	NA	NA	NA
Survey	NA	NA	NA	NA	NA	NA	NA	NA	NA	NA	NA	NA	NA

San Marino - PnV3

SMR - PnV3



Description:

2008: Estimate based on reported data. PCV introduced in 2007 reporting started in 2008

2009: Estimate based on reported data. Missing or ignored reported value estimated by extrapolation from 2008 reported value of 12 percent.

	1997	1998	1999	2000	2001	2002	2003	2004	2005	2006	2007	2008	2009
Estimate	NA	NA	NA	NA	NA	NA	NA	NA	NA	NA	NA	12	12
Reported	NA	NA	NA	NA	NA	NA	NA	NA	NA	NA	NA	12	NA
Official	NA	NA	NA	NA	NA	NA	NA	NA	NA	NA	NA	12	NA
Administrative	NA	NA	NA	NA	NA	NA	NA	NA	NA	NA	NA	12	NA
Survey	NA	NA	NA	NA	NA	NA	NA	NA	NA	NA	NA	NA	NA

Further information and estimates for 1980-1996 are available at:

http://www.childinfo.org/immunization_countryreports.html

http://www.who.int/immunization_monitoring/routine/immunization_coverage/en/index4.html