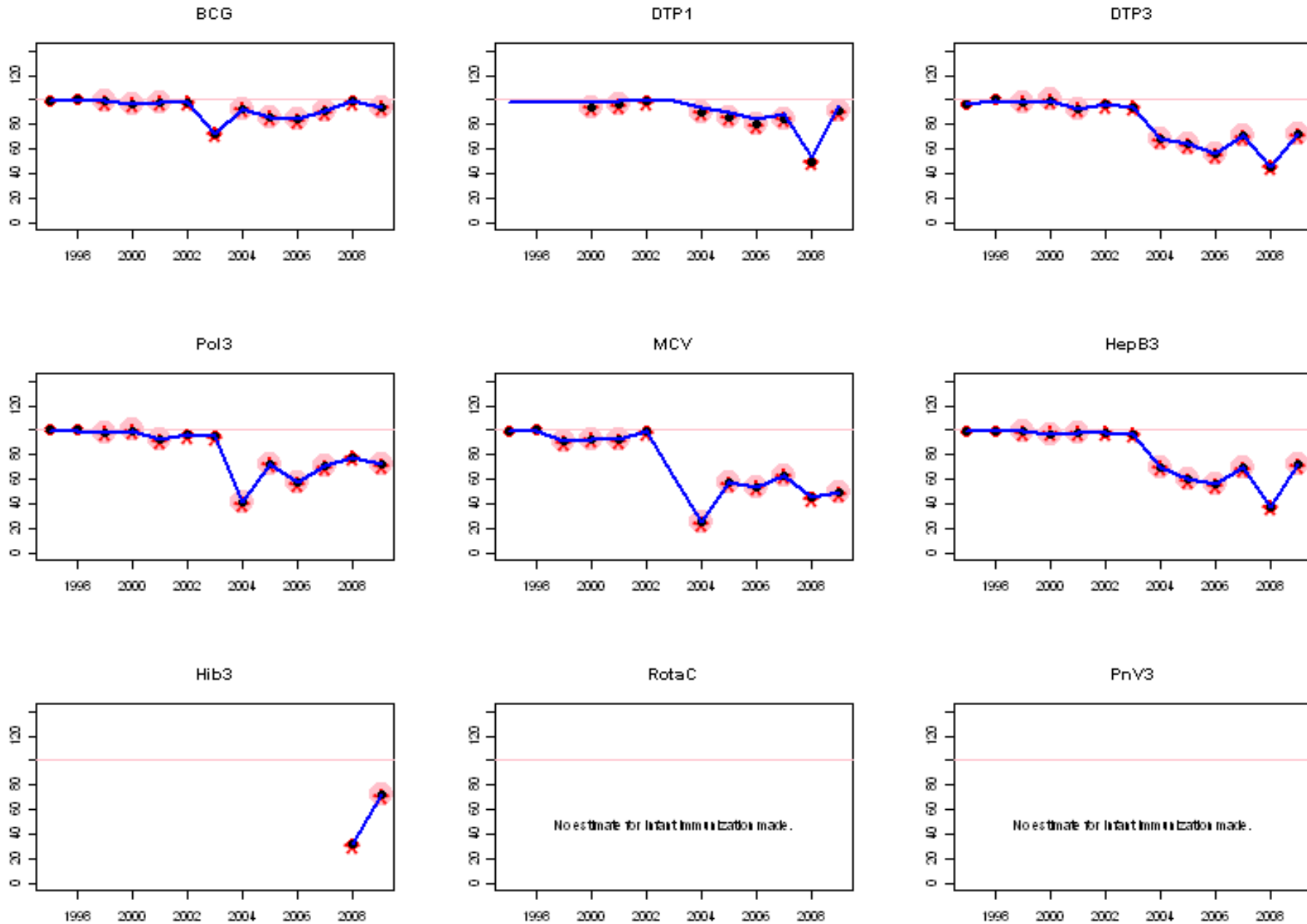
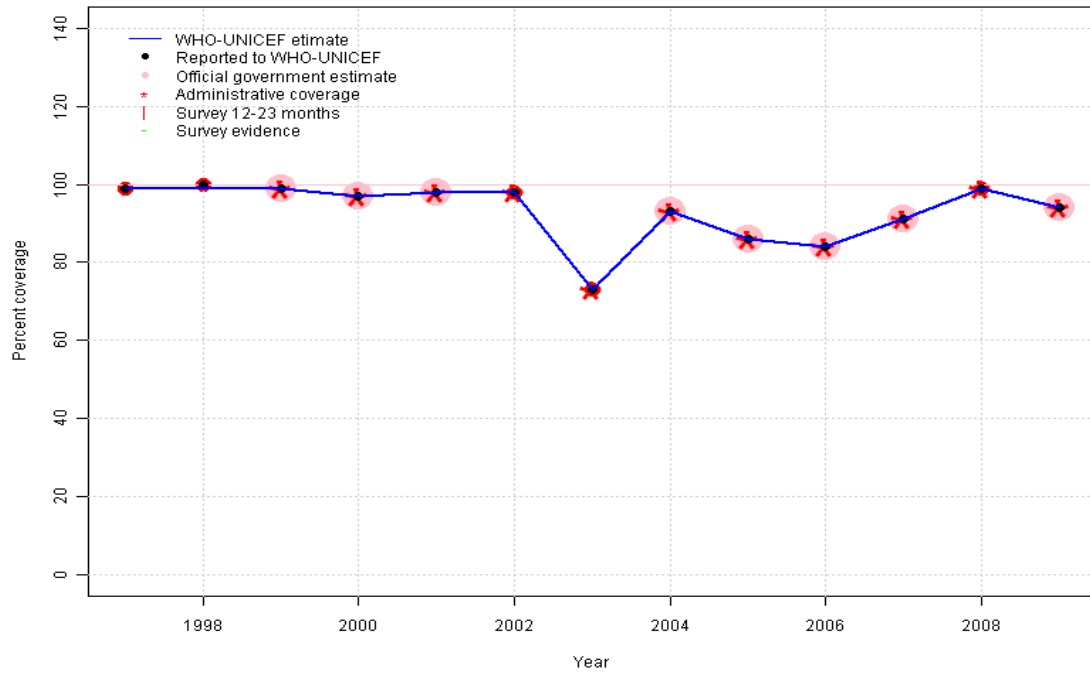


Samoa: WHO and UNICEF estimates of immunization coverage, 1997 - 2009



Samoa - BCG

WSM - BCG



Description:

1997: Legacy estimate.

1998: Estimate based on reported data.

1999: Estimate based on reported data.

2000: Estimate based on reported data.

2001: Estimate based on reported data.

2002: Estimate based on reported data.

2003: Estimate based on reported data. Decline the result of two months vaccine stock out.

2004: Estimate based on reported data.

2005: Estimate based on reported data.

2006: Estimate based on reported data.

2007: Estimate based on reported data.

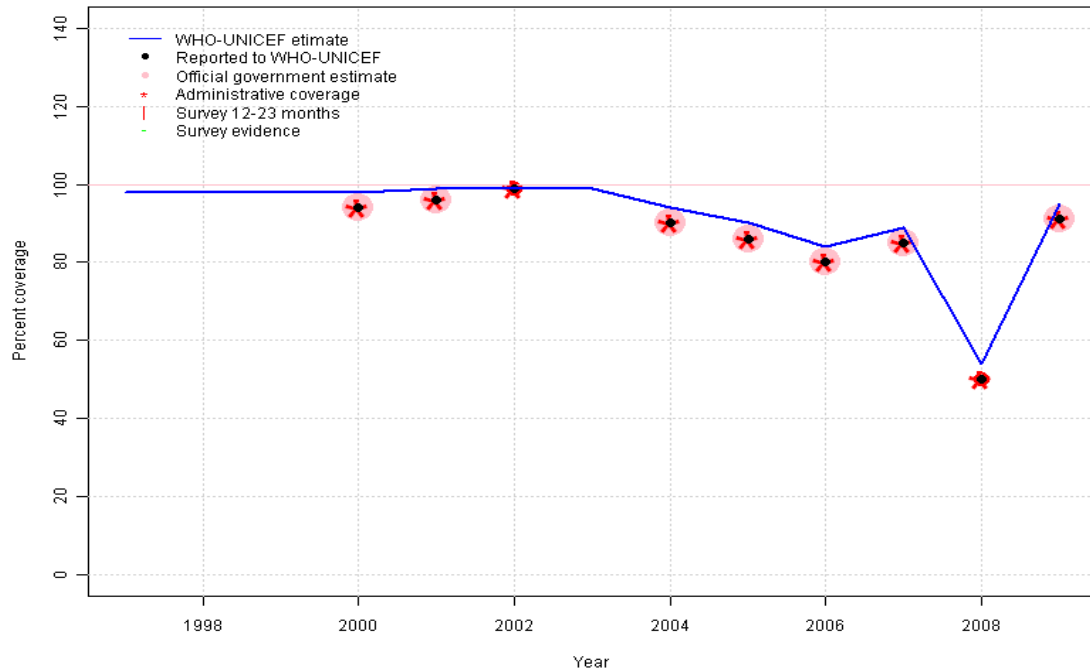
2008: Estimate based on reported data.

2009: Estimate based on reported data.

| | 1997 | 1998 | 1999 | 2000 | 2001 | 2002 | 2003 | 2004 | 2005 | 2006 | 2007 | 2008 | 2009 |
|----------------|------|------|------|------|------|------|------|------|------|------|------|------|------|
| Estimate | 99 | 99 | 99 | 97 | 98 | 98 | 73 | 93 | 86 | 84 | 91 | 99 | 94 |
| Reported | 99 | 100 | 99 | 97 | 98 | 98 | 73 | 93 | 86 | 84 | 91 | 99 | 94 |
| Official | NA | NA | 99 | 97 | 98 | NA | NA | 93 | 86 | 84 | 91 | NA | 94 |
| Administrative | NA | NA | 99 | 97 | 98 | 98 | 73 | 93 | 86 | 84 | 91 | 99 | 94 |
| Survey | NA | NA | NA | NA | NA | NA | NA | NA | NA | NA | NA | NA | NA |

Samoa - DTP1

WSM - DTP1



| | 1997 | 1998 | 1999 | 2000 | 2001 | 2002 | 2003 | 2004 | 2005 | 2006 | 2007 | 2008 | 2009 |
|----------------|------|------|------|------|------|------|------|------|------|------|------|------|------|
| Estimate | 98 | 98 | 98 | 98 | 99 | 99 | 99 | 94 | 90 | 84 | 89 | 54 | 95 |
| Reported | NA | NA | NA | 94 | 96 | 99 | NA | 90 | 86 | 80 | 85 | 50 | 91 |
| Official | NA | NA | NA | 94 | 96 | NA | NA | 90 | 86 | 80 | 85 | NA | 91 |
| Administrative | NA | NA | NA | 94 | 96 | 99 | NA | 90 | 86 | 80 | 85 | 50 | 91 |
| Survey | NA | NA | NA | NA | NA | NA | NA | NA | NA | NA | NA | NA | NA |

Description:

1997: Legacy estimate.

1998: Estimated DTP3 greater than estimated DTP1; DTP1 estimate based on the relationship between DTP1 and DTP3 from 282 surveys.

1999: Estimate calibrated to 1997 level (98 percent) and reported coverage (94 percent).

2000: Estimated DTP3 greater than estimated DTP1; DTP1 estimate based on the relationship between DTP1 and DTP3 from 282 surveys.

2001: Estimate calibrated to 1997 level (98 percent) and reported coverage (96 percent).

2002: Estimate calibrated to 1997 level (98 percent) and reported coverage (99 percent).

2003: Estimate calibrated to 1997 level (98 percent) and reported coverage (95 percent).

2004: Estimate calibrated to 1997 level (98 percent) and reported coverage (90 percent).

2005: Estimate calibrated to 1997 level (98 percent) and reported coverage (86 percent).

2006: Estimate calibrated to 1997 level (98 percent) and reported coverage (80 percent).

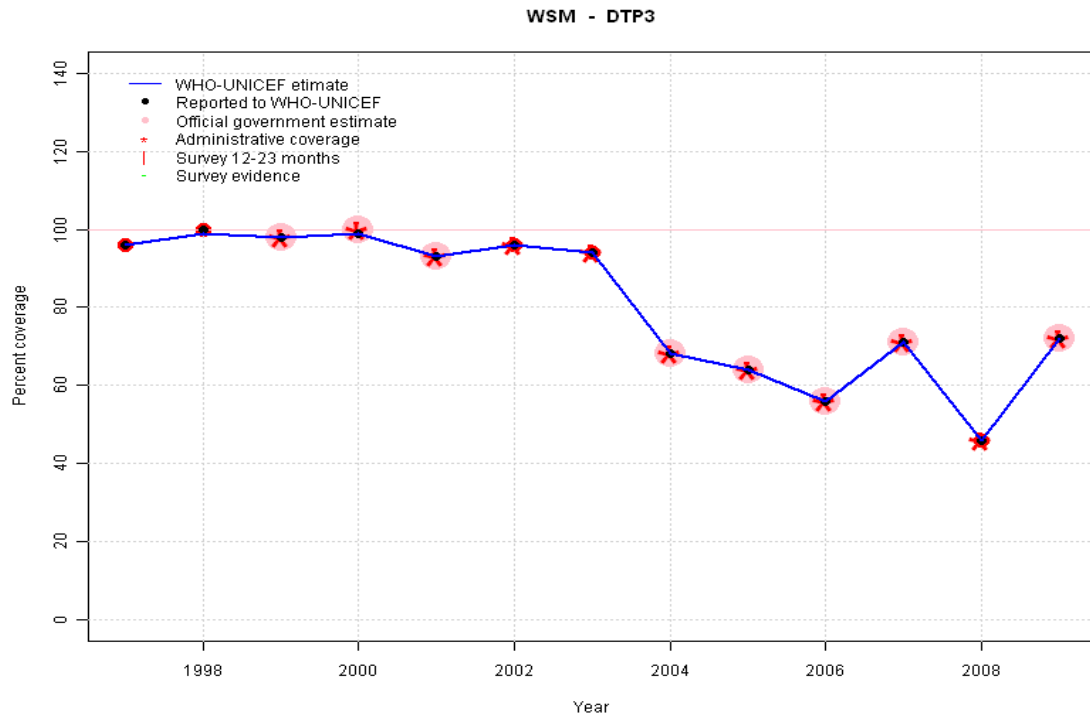
2007: Estimate calibrated to 1997 level (98 percent) and reported coverage (85 percent).

2008: Estimate calibrated to 1997 level (98 percent) and reported coverage (50 percent).

2009: Estimate calibrated to 1997 level (98 percent) and reported coverage (91 percent).

Samoa - DTP3

Description:

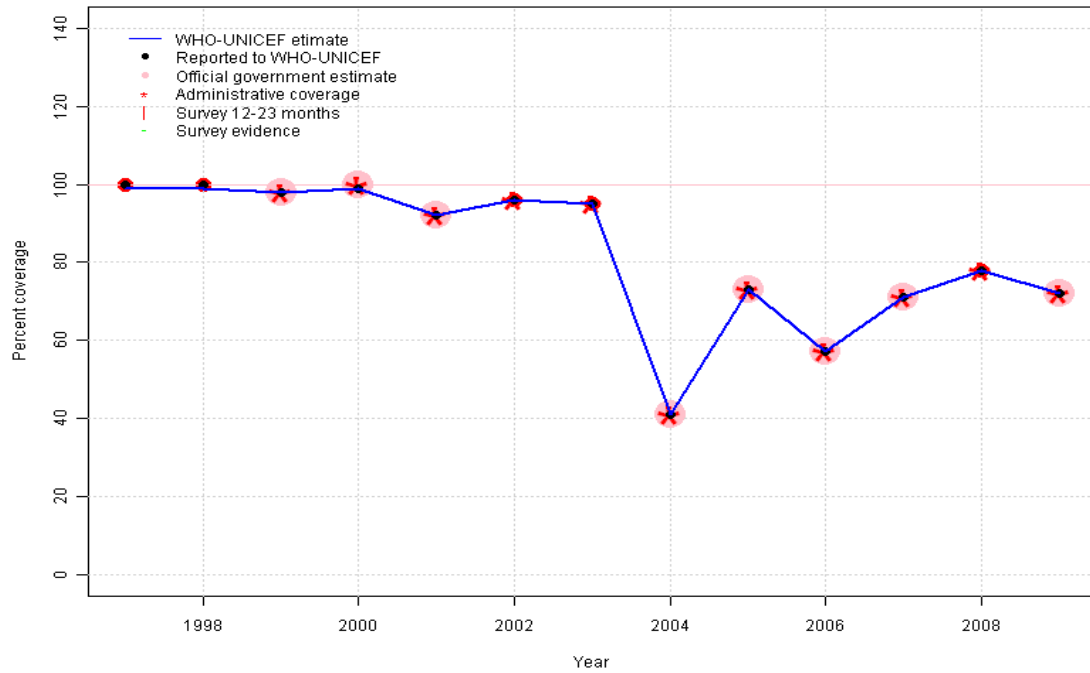


1997: Legacy estimate.
 1998: Estimate based on reported data.
 1999: Estimate based on reported data.
 2000: Estimate based on reported data.
 2001: Estimate based on reported data.
 2002: Estimate based on reported data.
 2003: Estimate based on reported data.
 2004: Estimate based on reported data.
 2005: Estimate based on reported data.
 2006: Estimate based on reported data.
 2007: Estimate based on reported data.
 2008: Estimate based on reported data.
 2009: Estimate based on reported data.

| | 1997 | 1998 | 1999 | 2000 | 2001 | 2002 | 2003 | 2004 | 2005 | 2006 | 2007 | 2008 | 2009 |
|----------------|------|------|------|------|------|------|------|------|------|------|------|------|------|
| Estimate | 96 | 99 | 98 | 99 | 93 | 96 | 94 | 68 | 64 | 56 | 71 | 46 | 72 |
| Reported | 96 | 100 | 98 | 99 | 93 | 96 | 94 | 68 | 64 | 56 | 71 | 46 | 72 |
| Official | NA | NA | 98 | 100 | 93 | NA | NA | 68 | 64 | 56 | 71 | NA | 72 |
| Administrative | NA | NA | 98 | 100 | 93 | 96 | 94 | 68 | 64 | 56 | 71 | 46 | 72 |
| Survey | NA | NA | NA | NA | NA | NA | NA | NA | NA | NA | NA | NA | NA |

Samoa - Pol3

WSM - Pol3



Description:

1997: Legacy estimate.

1998: Estimate based on reported data.

1999: Estimate based on reported data.

2000: Estimate based on reported data.

2001: Estimate based on reported data.

2002: Estimate based on reported data.

2003: Estimate based on reported data.

2004: Estimate based on reported data. Decline the result of two months vaccine stock out.

2005: Estimate based on reported data.

2006: Estimate based on reported data.

2007: Estimate based on reported data.

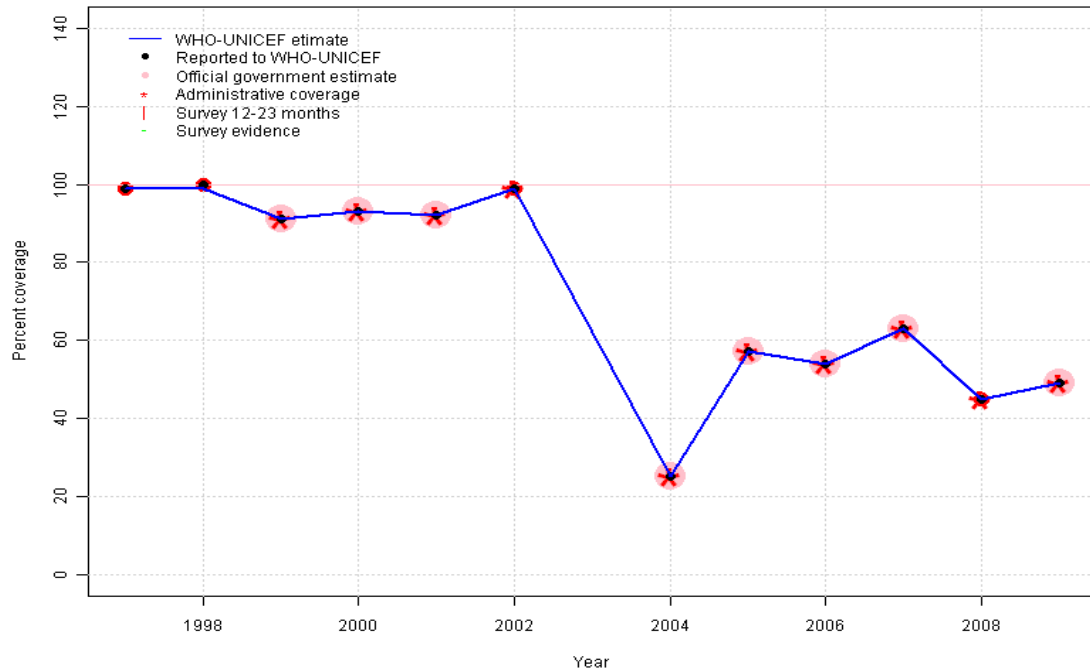
2008: Estimate based on reported data.

2009: Estimate based on reported data.

| | 1997 | 1998 | 1999 | 2000 | 2001 | 2002 | 2003 | 2004 | 2005 | 2006 | 2007 | 2008 | 2009 |
|----------------|------|------|------|------|------|------|------|------|------|------|------|------|------|
| Estimate | 99 | 99 | 98 | 99 | 92 | 96 | 95 | 41 | 73 | 57 | 71 | 78 | 72 |
| Reported | 100 | 100 | 98 | 99 | 92 | 96 | 95 | 41 | 73 | 57 | 71 | 78 | 72 |
| Official | NA | NA | 98 | 100 | 92 | NA | NA | 41 | 73 | 57 | 71 | NA | 72 |
| Administrative | NA | NA | 98 | 100 | 92 | 96 | 95 | 41 | 73 | 57 | 71 | 78 | 72 |
| Survey | NA | NA | NA | NA | NA | NA | NA | NA | NA | NA | NA | NA | NA |

Samoa - MCV

WSM - MCV



Description:

1997: Legacy estimate.

1998: Estimate based on reported data.

1999: Estimate based on reported data.

2000: Estimate based on reported data.

2001: Estimate based on reported data.

2002: Estimate based on reported data.

2003: Estimate based on trend in reported data. Missing or ignored reported value estimated by interpolation between reported values of 99 percent in 2002 and 25 percent in 2004.

2004: Estimate based on reported data.

2005: Estimate based on reported data.

2006: Estimate based on reported data.

2007: Estimate based on reported data.

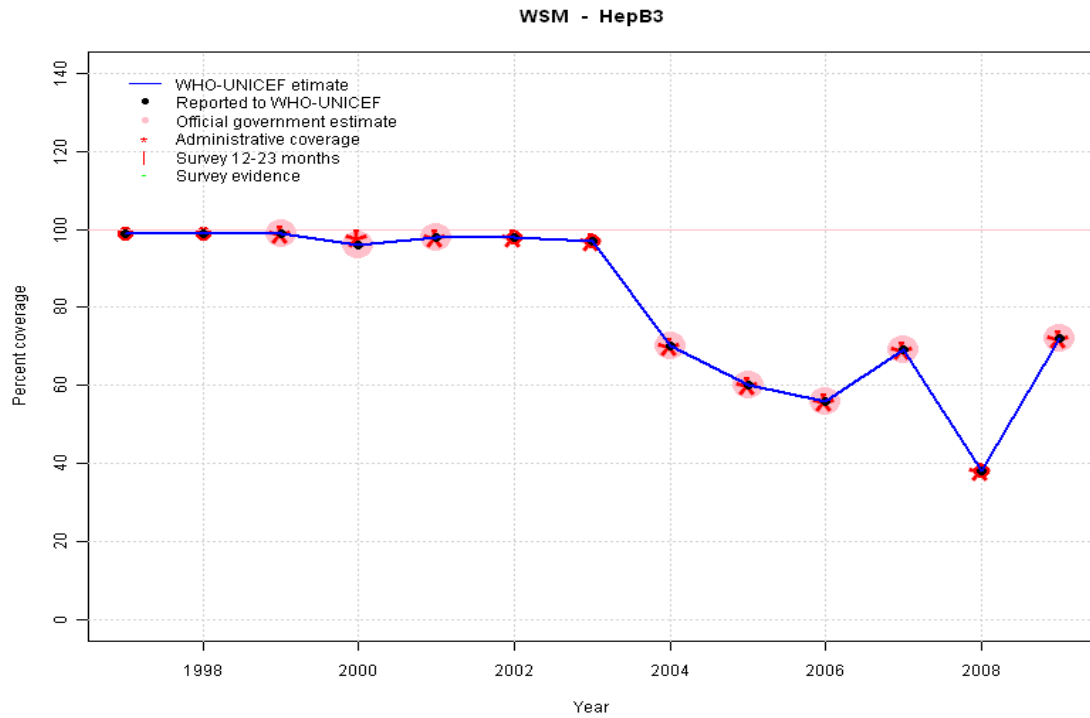
2008: Estimate based on reported data.

2009: Estimate based on reported data.

| | 1997 | 1998 | 1999 | 2000 | 2001 | 2002 | 2003 | 2004 | 2005 | 2006 | 2007 | 2008 | 2009 |
|----------------|------|------|------|------|------|------|------|------|------|------|------|------|------|
| Estimate | 99 | 99 | 91 | 93 | 92 | 99 | 62 | 25 | 57 | 54 | 63 | 45 | 49 |
| Reported | 99 | 100 | 91 | 93 | 92 | 99 | NA | 25 | 57 | 54 | 63 | 45 | 49 |
| Official | NA | NA | 91 | 93 | 92 | NA | NA | 25 | 57 | 54 | 63 | NA | 49 |
| Administrative | NA | NA | 91 | 93 | 92 | 99 | NA | 25 | 57 | 54 | 63 | 45 | 49 |
| Survey | NA | NA | NA | NA | NA | NA | NA | NA | NA | NA | NA | NA | NA |

Samoa - HepB3

Description:

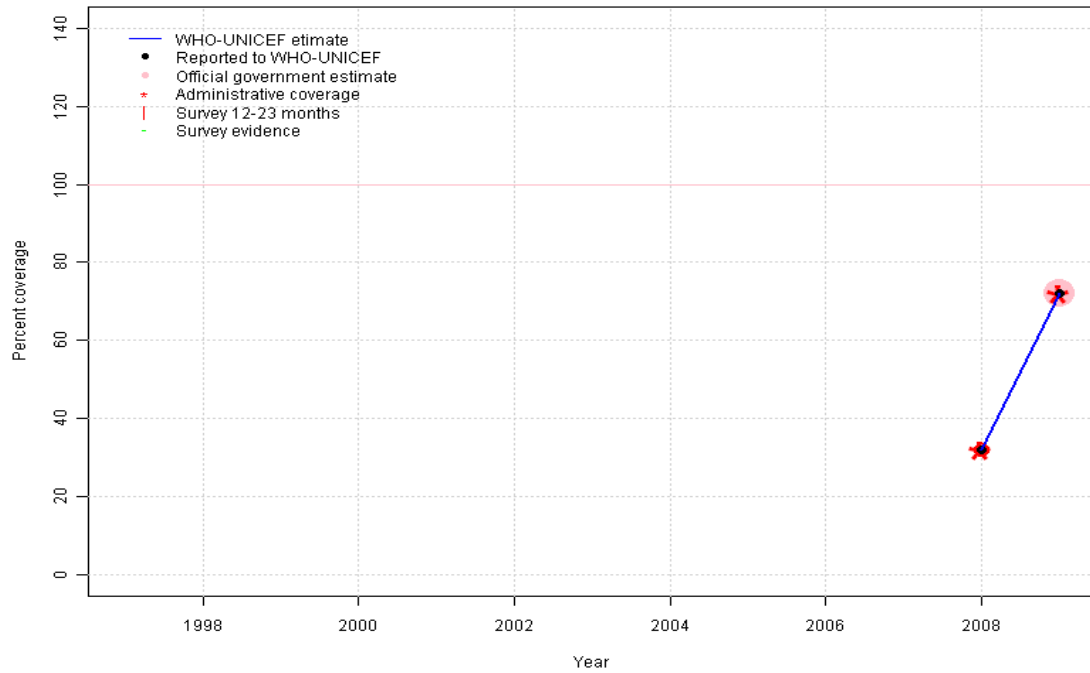


- 1997: Legacy estimate.
- 1998: Estimate based on reported data.
- 1999: Estimate based on reported data.
- 2000: Estimate based on reported data.
- 2001: Estimate based on reported data.
- 2002: Estimate based on reported data.
- 2003: Estimate based on reported data.
- 2004: Estimate based on reported data.
- 2005: Estimate based on reported data.
- 2006: Estimate based on reported data.
- 2007: Estimate based on reported data.
- 2008: Estimate based on reported data.
- 2009: Estimate based on reported data.

| | 1997 | 1998 | 1999 | 2000 | 2001 | 2002 | 2003 | 2004 | 2005 | 2006 | 2007 | 2008 | 2009 |
|----------------|------|------|------|------|------|------|------|------|------|------|------|------|------|
| Estimate | 99 | 99 | 99 | 96 | 98 | 98 | 97 | 70 | 60 | 56 | 69 | 38 | 72 |
| Reported | 99 | 99 | 99 | 96 | 98 | 98 | 97 | 70 | 60 | 56 | 69 | 38 | 72 |
| Official | NA | NA | 99 | 96 | 98 | NA | NA | 70 | 60 | 56 | 69 | NA | 72 |
| Administrative | NA | NA | 99 | 98 | 98 | 98 | 97 | 70 | 60 | 56 | 69 | 38 | 72 |
| Survey | NA | NA | NA | NA | NA | NA | NA | NA | NA | NA | NA | NA | NA |

Samoa - Hib3

WSM - Hib3



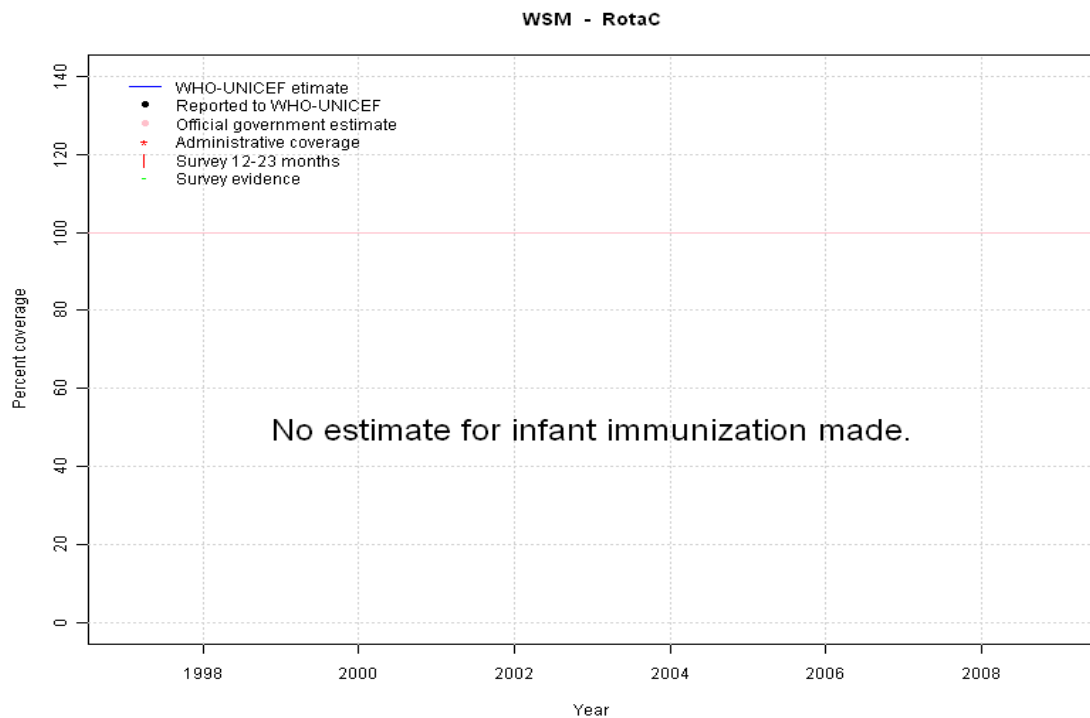
Description:

2008: Estimate based on reported data. Hib introduced in 2007. Reporting started in 2008. Vaccine presentation is DTP-HepB-Hib.

2009: Estimate based on reported data.

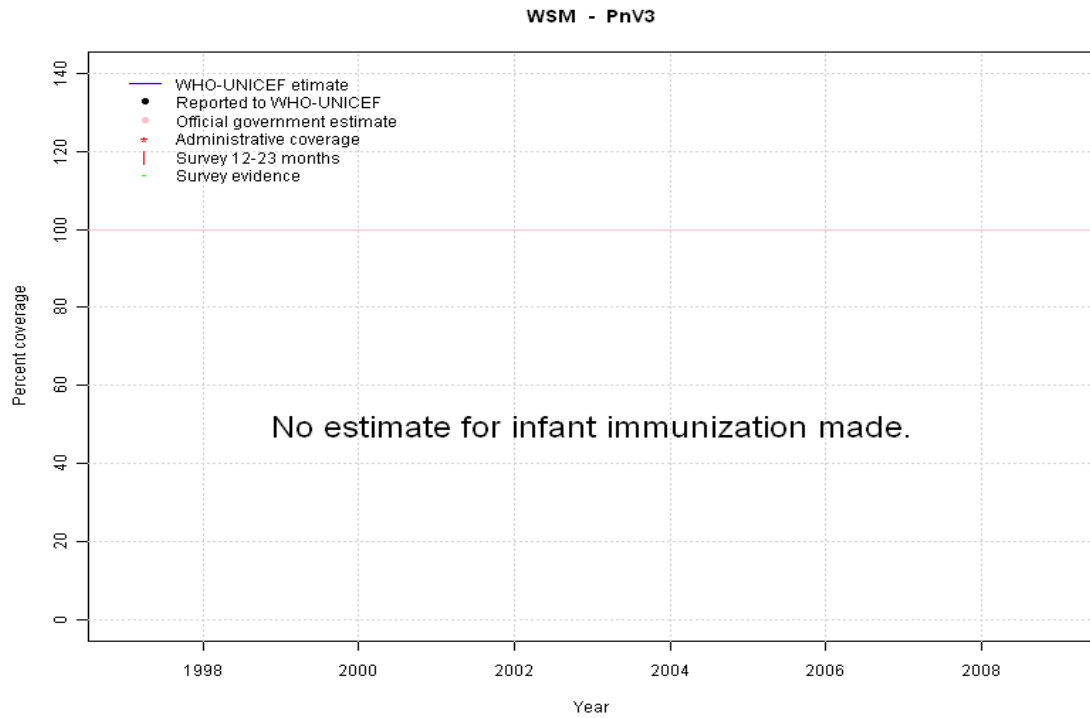
| | 1997 | 1998 | 1999 | 2000 | 2001 | 2002 | 2003 | 2004 | 2005 | 2006 | 2007 | 2008 | 2009 |
|----------------|------|------|------|------|------|------|------|------|------|------|------|------|------|
| Estimate | NA | NA | NA | NA | NA | NA | NA | NA | NA | NA | NA | 32 | 72 |
| Reported | NA | NA | NA | NA | NA | NA | NA | NA | NA | NA | NA | 32 | 72 |
| Official | NA | NA | NA | NA | NA | NA | NA | NA | NA | NA | NA | NA | 72 |
| Administrative | NA | NA | NA | NA | NA | NA | NA | NA | NA | NA | NA | 32 | 72 |
| Survey | NA | NA | NA | NA | NA | NA | NA | NA | NA | NA | NA | NA | NA |

Samoa - RotaC



| | 1997 | 1998 | 1999 | 2000 | 2001 | 2002 | 2003 | 2004 | 2005 | 2006 | 2007 | 2008 | 2009 |
|----------------|------|------|------|------|------|------|------|------|------|------|------|------|------|
| Estimate | NA | NA | NA | NA | NA | NA | NA | NA | NA | NA | NA | NA | NA |
| Reported | NA | NA | NA | NA | NA | NA | NA | NA | NA | NA | NA | NA | NA |
| Official | NA | NA | NA | NA | NA | NA | NA | NA | NA | NA | NA | NA | NA |
| Administrative | NA | NA | NA | NA | NA | NA | NA | NA | NA | NA | NA | NA | NA |
| Survey | NA | NA | NA | NA | NA | NA | NA | NA | NA | NA | NA | NA | NA |

Samoa - PnV3



| | 1997 | 1998 | 1999 | 2000 | 2001 | 2002 | 2003 | 2004 | 2005 | 2006 | 2007 | 2008 | 2009 |
|----------------|------|------|------|------|------|------|------|------|------|------|------|------|------|
| Estimate | NA | NA | NA | NA | NA | NA | NA | NA | NA | NA | NA | NA | NA |
| Reported | NA | NA | NA | NA | NA | NA | NA | NA | NA | NA | NA | NA | NA |
| Official | NA | NA | NA | NA | NA | NA | NA | NA | NA | NA | NA | NA | NA |
| Administrative | NA | NA | NA | NA | NA | NA | NA | NA | NA | NA | NA | NA | NA |
| Survey | NA | NA | NA | NA | NA | NA | NA | NA | NA | NA | NA | NA | NA |

Further information and estimates for 1980-1996 are available at:

http://www.childinfo.org/immunization_countryreports.html

http://www.who.int/immunization_monitoring/routine/immunization_coverage/en/index4.html