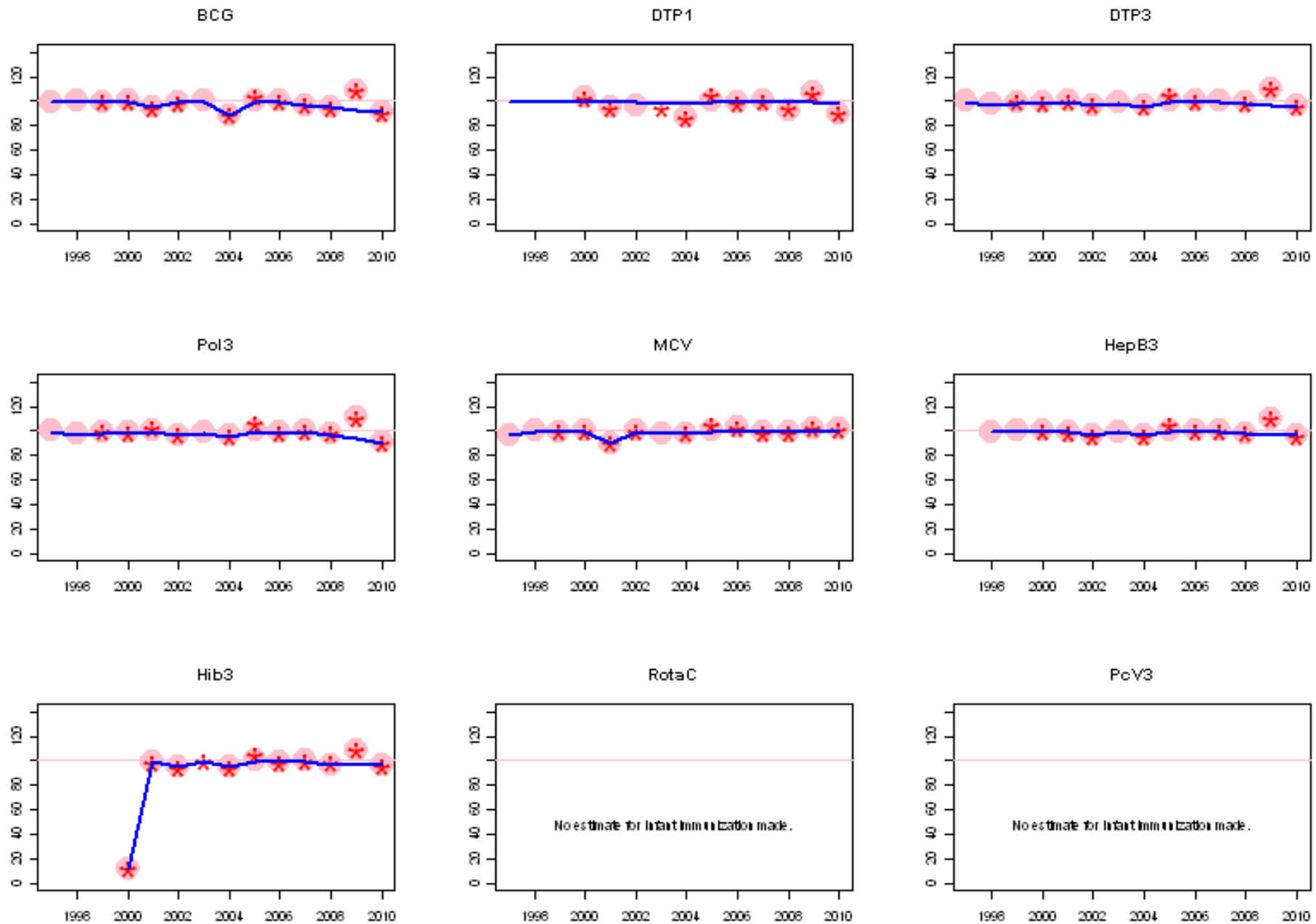
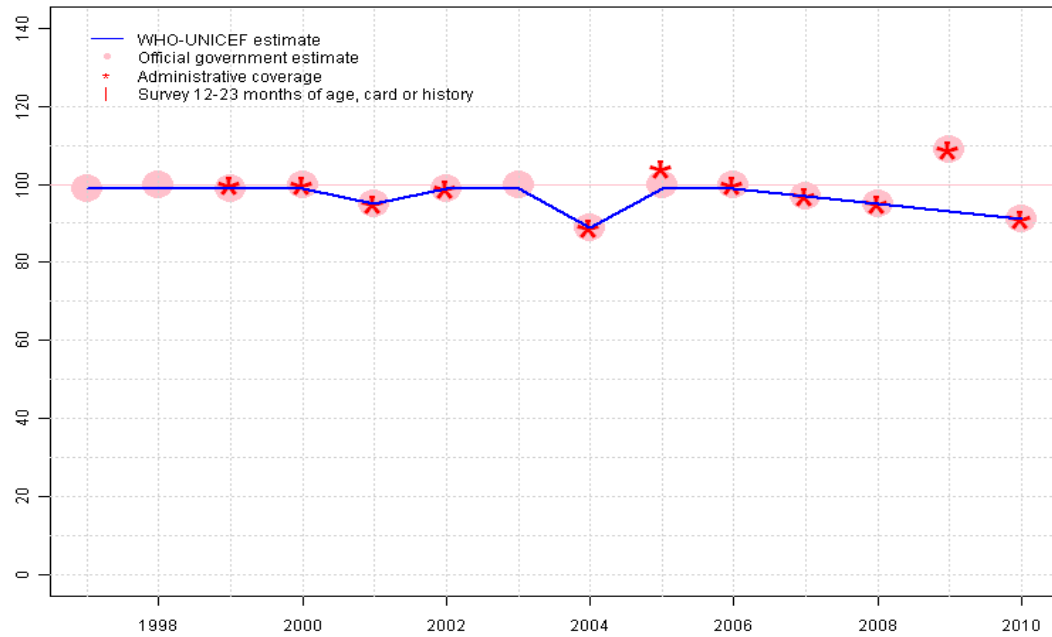


Saint Kitts and Nevis. WHO and UNICEF estimates of immunization coverage: 2010 revision



Saint Kitts and Nevis - BCG

KNA - BCG



Description:

1997: Legacy estimate.

1998: Estimate based on reported data.

1999: Estimate based on reported data.

2000: Estimate based on reported data.

2001: Estimate based on reported data.

2002: Estimate based on reported data.

2003: Estimate based on reported data.

2004: Estimate based on reported data.

2005: Estimate based on reported data.

2006: Estimate based on reported data.

2007: Estimate based on reported data.

2008: Estimate based on reported data.

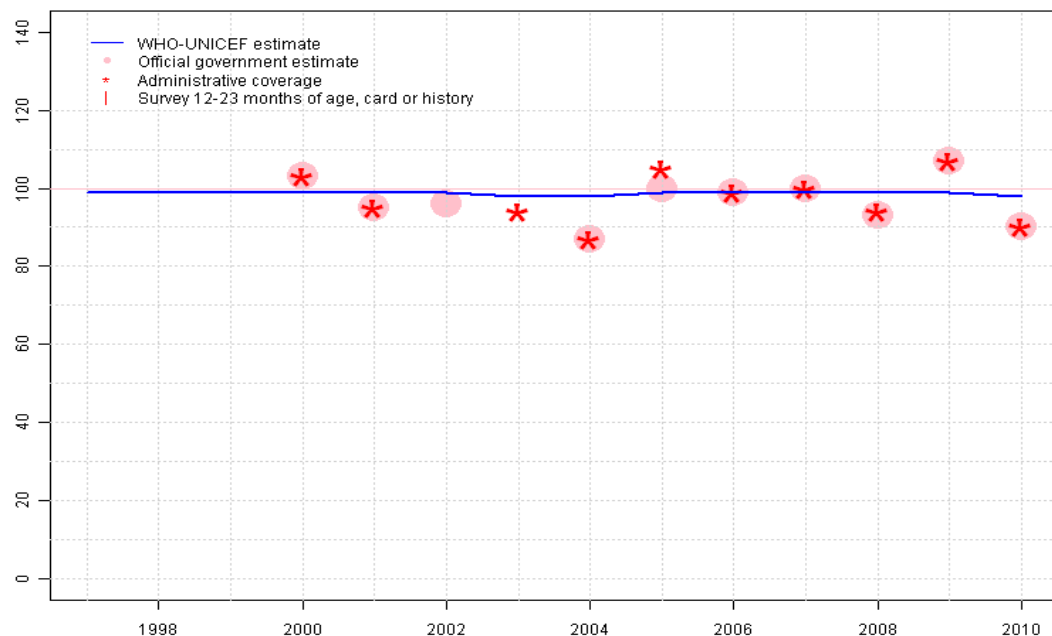
2009: Estimate based on interpolation between 2008 and 2010. Reported data of 109 percent greater than 100 percent. Reported data not accepted due to an increase from 95 percent to 109 percent with a subsequent decrease to 91 percent. Current estimate of 93 percent changed from previous revision value of 95 percent.

2010: Estimate based on reported data. Estimates based on reported data.

	1997	1998	1999	2000	2001	2002	2003	2004	2005	2006	2007	2008	2009	2010
Estimate	99	99	99	99	95	99	99	89	99	99	97	95	93	91
Official	99	100	99	100	95	99	100	89	100	100	97	95	109	91
Administrative	NA	NA	100	100	95	99	NA	89	104	100	97	95	109	91
Survey	NA	NA	NA	NA	NA	NA	NA	NA	NA	NA	NA	NA	NA	NA

Saint Kitts and Nevis - DTP1

KNA - DTP1



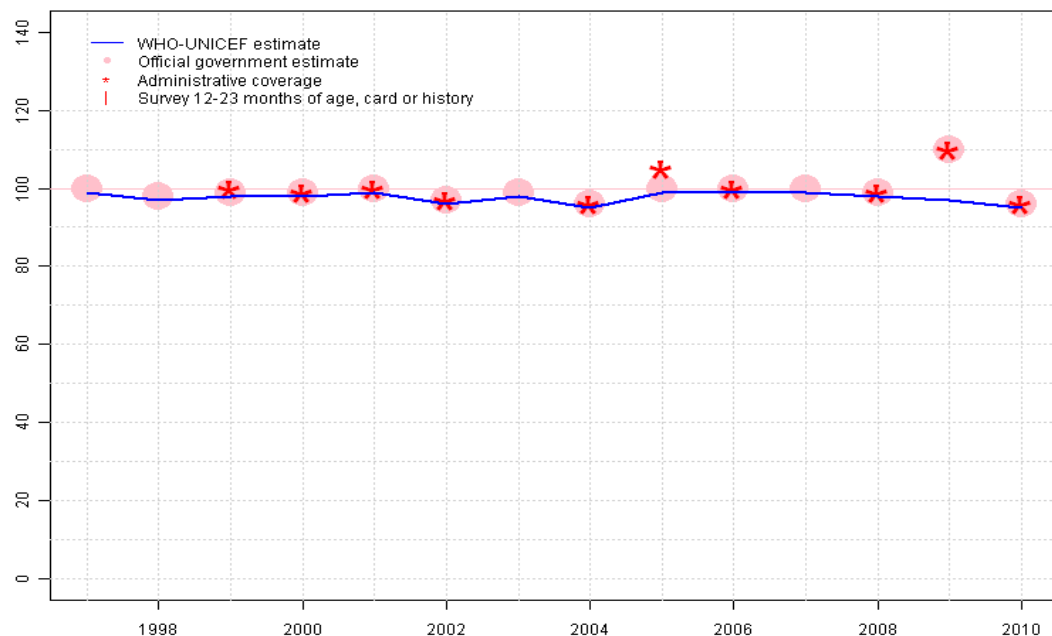
Description:

- 1997: Legacy estimate.
- 1998: No accepted DTP1 data. Estimate based on DTP3 coverage of 97.
- 1999: No accepted DTP1 data. Estimate based on DTP3 coverage of 98.
- 2000: No accepted DTP1 data. Estimate based on DTP3 coverage of 98. Reported data of 103 percent greater than 100 percent.
- 2001: Reported data 95 percent calibrated to 1997 levels. Reported data of 95 percent estimated by extrapolating from 2001
- 2002: Reported data 96 percent calibrated to 1997 levels. Reported data of 95 percent estimated by extrapolating from 2001
- 2003: Reported data 94 percent calibrated to 1997 levels. Reported data of 95 percent estimated by extrapolating from 2001
- 2004: DTP1 coverage estimated based on DTP3 coverage of 95.
- 2005: Reported data 100 percent calibrated to 1997 levels. Reported data of 95 percent estimated by extrapolating from 2001
- 2006: Reported data 99 percent calibrated to 1997 levels. Reported data of 95 percent estimated by extrapolating from 2001
- 2007: Reported data 100 percent calibrated to 1997 levels. Reported data of 95 percent estimated by extrapolating from 2001
- 2008: DTP1 coverage estimated based on DTP3 coverage of 98. Current estimate of 99 percent changed from previous revision value of 98 percent.
- 2009: Estimate based on interpolation between 2008 and 2010. Reported data of 107 percent greater than 100 percent. Reported data not accepted due to an increase from 93 percent to 107 percent with a subsequent decrease to 90 percent. Current estimate of 99 percent changed from previous revision value of 98 percent.
- 2010: DTP1 coverage estimated based on DTP3 coverage of 95. Estimates based on reported data.

	1997	1998	1999	2000	2001	2002	2003	2004	2005	2006	2007	2008	2009	2010
Estimate	99	99	99	99	99	99	98	98	99	99	99	99	99	98
Official	NA	NA	NA	103	95	96	NA	87	100	99	100	93	107	90
Administrative	NA	NA	NA	103	95	NA	94	87	105	99	100	94	107	90
Survey	NA	NA	NA	NA	NA	NA	NA	NA	NA	NA	NA	NA	NA	NA

Saint Kitts and Nevis - DTP3

KNA - DTP3



	1997	1998	1999	2000	2001	2002	2003	2004	2005	2006	2007	2008	2009	2010
Estimate	99	97	98	98	99	96	98	95	99	99	99	98	97	95
Official	100	98	99	99	100	97	99	96	100	100	100	99	110	96
Administrative	NA	NA	100	99	100	97	NA	96	105	100	NA	99	110	96
Survey	NA	NA	NA	NA	NA	NA	NA	NA	NA	NA	NA	NA	NA	NA

Description:

1997: Legacy estimate.

1998: Reported data 98 percent calibrated to 1997 levels. Current estimate of 97 percent changed from previous revision value of 98 percent.

1999: Reported data 99 percent calibrated to 1997 levels. Current estimate of 98 percent changed from previous revision value of 99 percent.

2000: Reported data 99 percent calibrated to 1997 levels. Current estimate of 98 percent changed from previous revision value of 99 percent.

2001: Reported data 100 percent calibrated to 1997 levels.

2002: Reported data 97 percent calibrated to 1997 levels. Current estimate of 96 percent changed from previous revision value of 97 percent.

2003: Reported data 99 percent calibrated to 1997 levels. Current estimate of 98 percent changed from previous revision value of 99 percent.

2004: Reported data 96 percent calibrated to 1997 levels. Current estimate of 95 percent changed from previous revision value of 96 percent.

2005: Reported data 100 percent calibrated to 1997 levels.

2006: Reported data 100 percent calibrated to 1997 levels.

2007: Reported data 100 percent calibrated to 1997 levels.

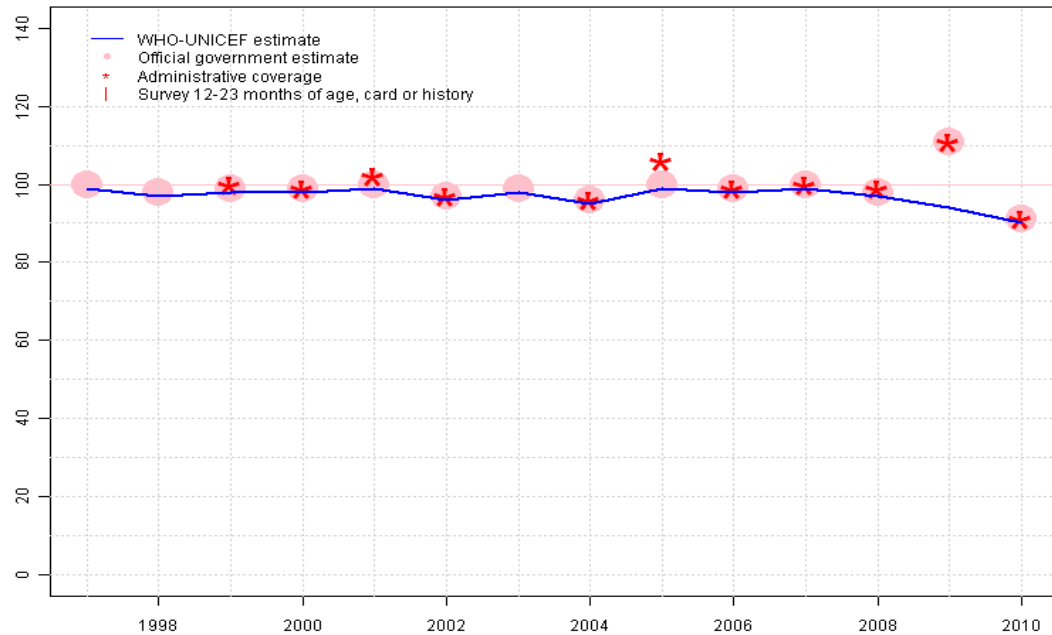
2008: Reported data 99 percent calibrated to 1997 levels. Current estimate of 98 percent changed from previous revision value of 99 percent.

2009: Estimate based on interpolation between 2008 and 2010. Reported data of 110 percent greater than 100 percent. Reported data not accepted due to an increase from 99 percent to 110 percent with a subsequent decrease to 96 percent. Current estimate of 97 percent changed from previous revision value of 99 percent.

2010: Reported data 96 percent calibrated to 1997 levels. Estimates based on reported data.

Saint Kitts and Nevis - Pol3

KNA - Pol3



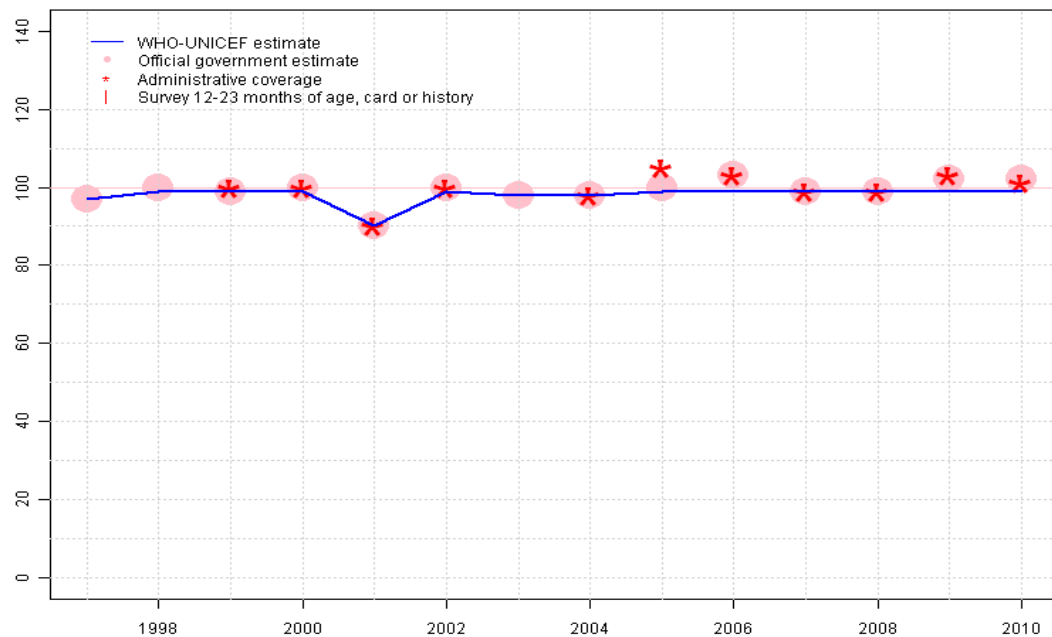
Description:

- 1997: Legacy estimate.
- 1998: Reported data 98 percent calibrated to 1997 levels. Current estimate of 97 percent changed from previous revision value of 98 percent.
- 1999: Reported data 99 percent calibrated to 1997 levels. Current estimate of 98 percent changed from previous revision value of 99 percent.
- 2000: Reported data 99 percent calibrated to 1997 levels. Current estimate of 98 percent changed from previous revision value of 99 percent.
- 2001: Reported data 100 percent calibrated to 1997 levels.
- 2002: Reported data 97 percent calibrated to 1997 levels. Current estimate of 96 percent changed from previous revision value of 97 percent.
- 2003: Reported data 99 percent calibrated to 1997 levels. Current estimate of 98 percent changed from previous revision value of 99 percent.
- 2004: Reported data 96 percent calibrated to 1997 levels. Current estimate of 95 percent changed from previous revision value of 96 percent.
- 2005: Reported data 100 percent calibrated to 1997 levels.
- 2006: Reported data 99 percent calibrated to 1997 levels. Current estimate of 98 percent changed from previous revision value of 99 percent.
- 2007: Reported data 100 percent calibrated to 1997 levels.
- 2008: Reported data 98 percent calibrated to 1997 levels. Current estimate of 97 percent changed from previous revision value of 98 percent.
- 2009: Estimate based on interpolation between 2008 and 2010. Reported data of 111 percent greater than 100 percent. Reported data not accepted due to an increase from 98 percent to 111 percent with a subsequent decrease to 91 percent. Current estimate of 94 percent changed from previous revision value of 98 percent.
- 2010: Reported data 91 percent calibrated to 1997 levels. Estimates based on reported data.

	1997	1998	1999	2000	2001	2002	2003	2004	2005	2006	2007	2008	2009	2010
Estimate	99	97	98	98	99	96	98	95	99	98	99	97	94	90
Official	100	98	99	99	100	97	99	96	100	99	100	98	111	91
Administrative	NA	NA	100	99	102	97	NA	96	106	99	100	99	111	91
Survey	NA	NA	NA	NA	NA	NA	NA	NA	NA	NA	NA	NA	NA	NA

Saint Kitts and Nevis - MCV

KNA - MCV



Description:

1997: Legacy estimate.

1998: Estimate based on reported data.

1999: Estimate based on reported data.

2000: Estimate based on reported data.

2001: Estimate based on reported data.

2002: Estimate based on reported data.

2003: Estimate based on reported data.

2004: Estimate based on reported data.

2005: Estimate based on reported data.

2006: Estimate based on interpolation between 2005 and 2007. Reported data of 103 percent greater than 100 percent.

2007: Estimate based on reported data.

2008: Estimate based on reported data.

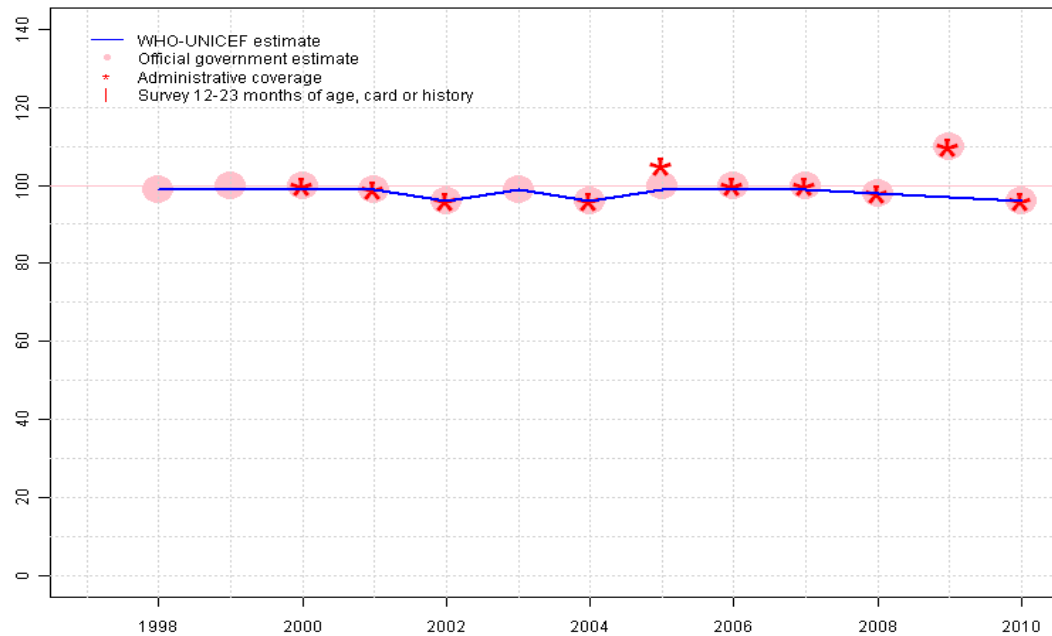
2009: Estimate based on interpolation between 2008 and 2010. Reported data of 102 percent greater than 100 percent.

2010: Estimate based on reported data. Estimates based on reported data.

	1997	1998	1999	2000	2001	2002	2003	2004	2005	2006	2007	2008	2009	2010
Estimate	97	99	99	99	90	99	98	98	99	99	99	99	99	99
Official	97	100	99	100	90	100	98	98	100	103	99	99	102	102
Administrative	NA	NA	100	100	90	100	NA	98	105	103	99	99	103	101
Survey	NA	NA	NA	NA	NA	NA	NA	NA	NA	NA	NA	NA	NA	NA

Saint Kitts and Nevis - HepB3

KNA - HepB3



Description:

1998: Estimate based on reported data. HepB introduced in 1997. Reporting started in 1998.

1999: Estimate based on reported data.

2000: Estimate based on reported data.

2001: Estimate based on reported data.

2002: Estimate based on reported data.

2003: Estimate based on reported data.

2004: Estimate based on reported data.

2005: Estimate based on reported data.

2006: Estimate based on reported data.

2007: Estimate based on reported data.

2008: Estimate based on reported data.

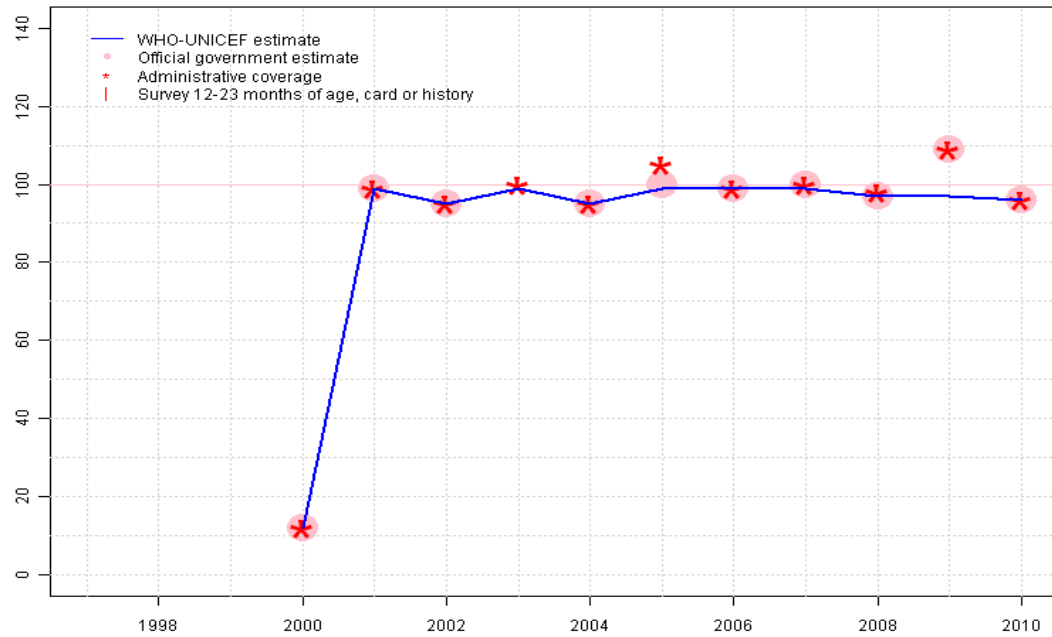
2009: Estimate based on interpolation between 2008 and 2010. Reported data of 110 percent greater than 100 percent. Reported data not accepted due to an increase from 98 percent to 110 percent with a subsequent decrease to 96 percent. Current estimate of 97 percent changed from previous revision value of 98 percent.

2010: Estimate based on reported data. Estimates based on reported data.

	1997	1998	1999	2000	2001	2002	2003	2004	2005	2006	2007	2008	2009	2010
Estimate	NA	99	99	99	99	96	99	96	99	99	99	98	97	96
Official	NA	99	100	100	99	96	99	96	100	100	100	98	110	96
Administrative	NA	NA	NA	100	99	96	NA	96	105	100	100	98	110	96
Survey	NA	NA	NA	NA	NA	NA	NA	NA	NA	NA	NA	NA	NA	NA

Saint Kitts and Nevis - Hib3

KNA - Hib3



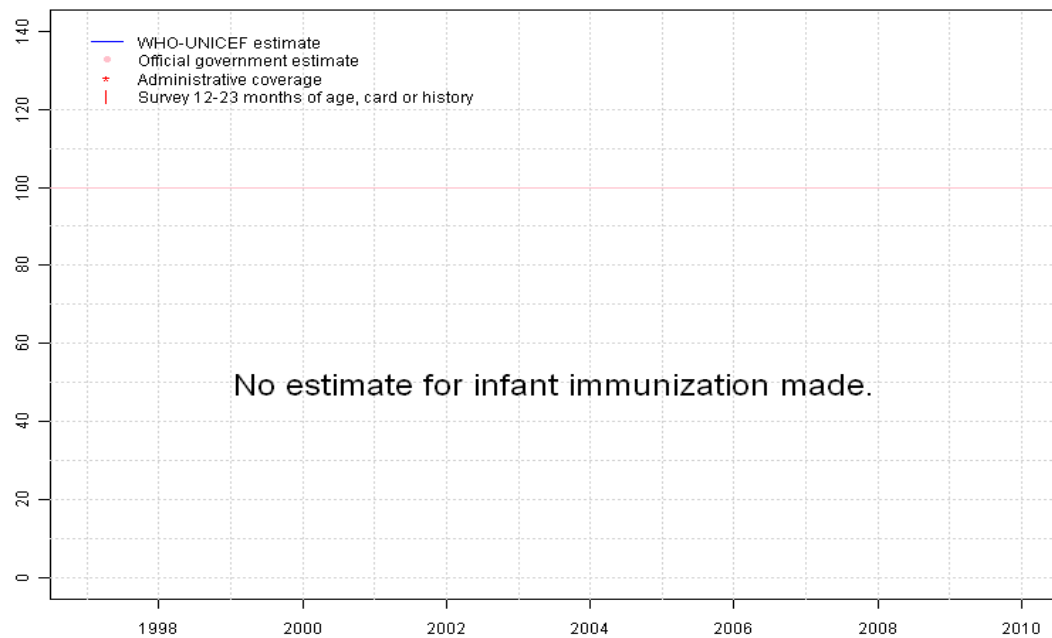
Description:

- 2000: Estimate based on reported data. Hib introduced in 2000
- 2001: Estimate based on reported data.
- 2002: Estimate based on reported data.
- 2003: Estimate based on reported data.
- 2004: Estimate based on reported data.
- 2005: Estimate based on reported data.
- 2006: Estimate based on reported data.
- 2007: Estimate based on reported data.
- 2008: Estimate based on reported data.
- 2009: Estimate based on interpolation between 2008 and 2010. Reported data of 109 percent greater than 100 percent. Reported data not accepted due to an increase from 97 percent to 109 percent with a subsequent decrease to 96 percent.
- 2010: Estimate based on reported data. Estimates based on reported data.

	1997	1998	1999	2000	2001	2002	2003	2004	2005	2006	2007	2008	2009	2010
Estimate	NA	NA	NA	12	99	95	99	95	99	99	99	97	97	96
Official	NA	NA	NA	12	99	95	NA	95	100	99	100	97	109	96
Administrative	NA	NA	NA	12	99	95	100	95	105	99	100	98	109	96
Survey	NA	NA	NA	NA	NA	NA	NA	NA	NA	NA	NA	NA	NA	NA

Saint Kitts and Nevis - RotaC

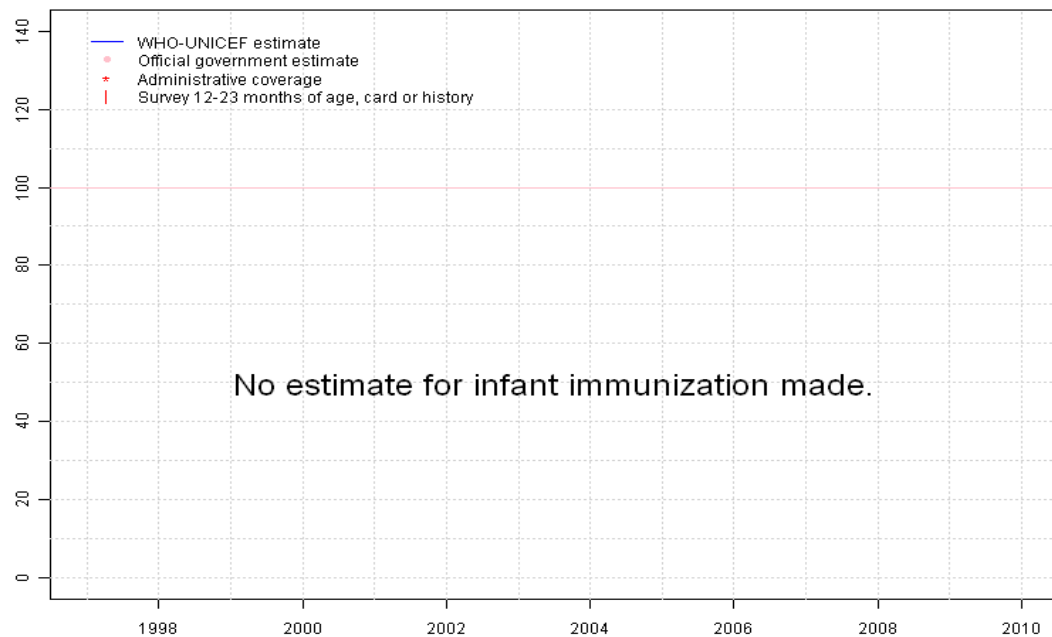
KNA - RotaC



	1997	1998	1999	2000	2001	2002	2003	2004	2005	2006	2007	2008	2009	2010
Estimate	NA	NA	NA	NA	NA	NA	NA	NA	NA	NA	NA	NA	NA	NA
Official	NA	NA	NA	NA	NA	NA	NA	NA	NA	NA	NA	NA	NA	NA
Administrative	NA	NA	NA	NA	NA	NA	NA	NA	NA	NA	NA	NA	NA	NA
Survey	NA	NA	NA	NA	NA	NA	NA	NA	NA	NA	NA	NA	NA	NA

Saint Kitts and Nevis - PcV3

KNA - PcV3



	1997	1998	1999	2000	2001	2002	2003	2004	2005	2006	2007	2008	2009	2010
Estimate	NA	NA	NA	NA	NA	NA	NA	NA	NA	NA	NA	NA	NA	NA
Official	NA	NA	NA	NA	NA	NA	NA	NA	NA	NA	NA	NA	NA	NA
Administrative	NA	NA	NA	NA	NA	NA	NA	NA	NA	NA	NA	NA	NA	NA
Survey	NA	NA	NA	NA	NA	NA	NA	NA	NA	NA	NA	NA	NA	NA

Further information and estimates for 1980-1996 are available at:

http://www.childinfo.org/immunization_countryreports.html

http://www.who.int/immunization_monitoring/routine/immunization_coverage/en/index4.html