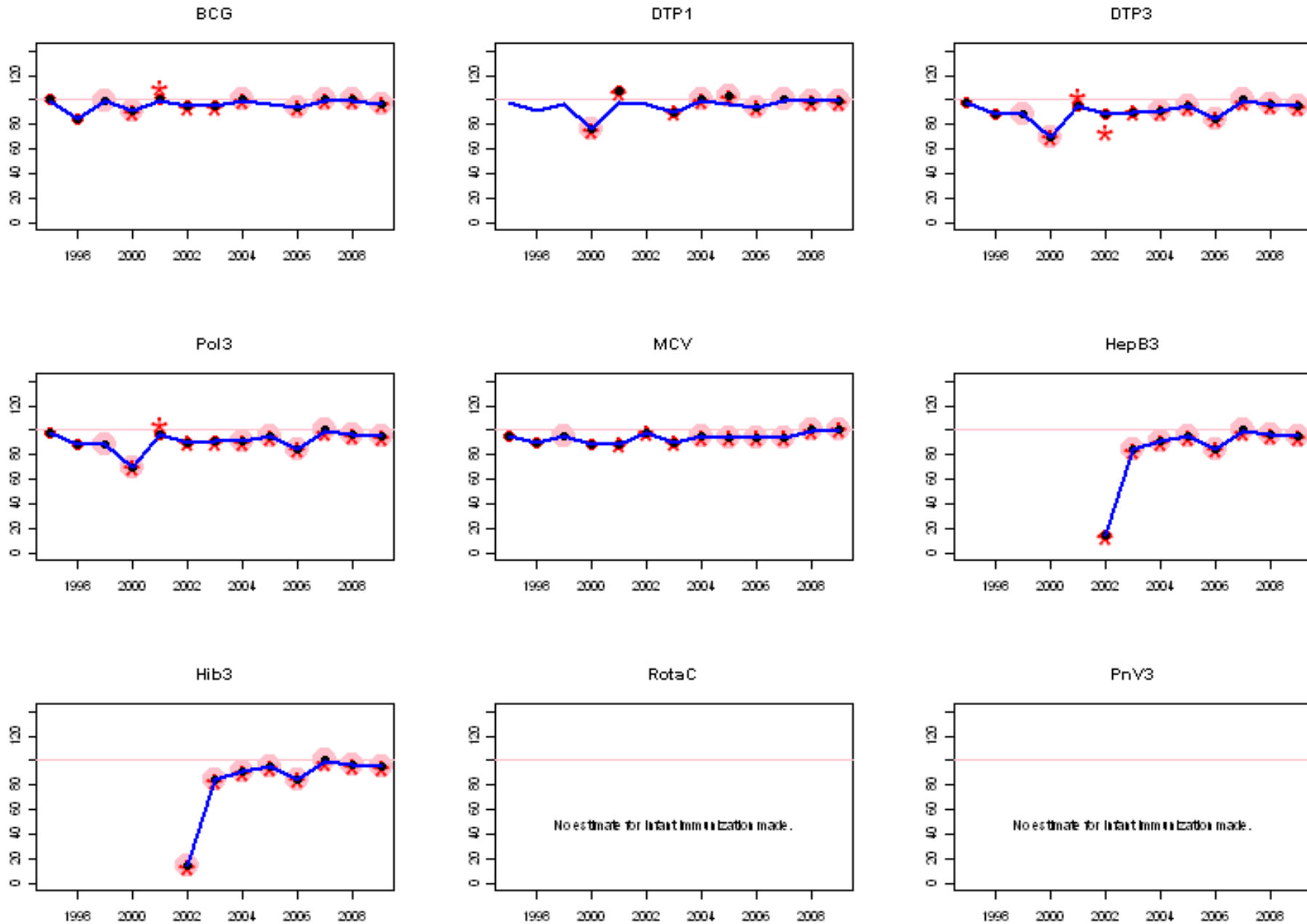
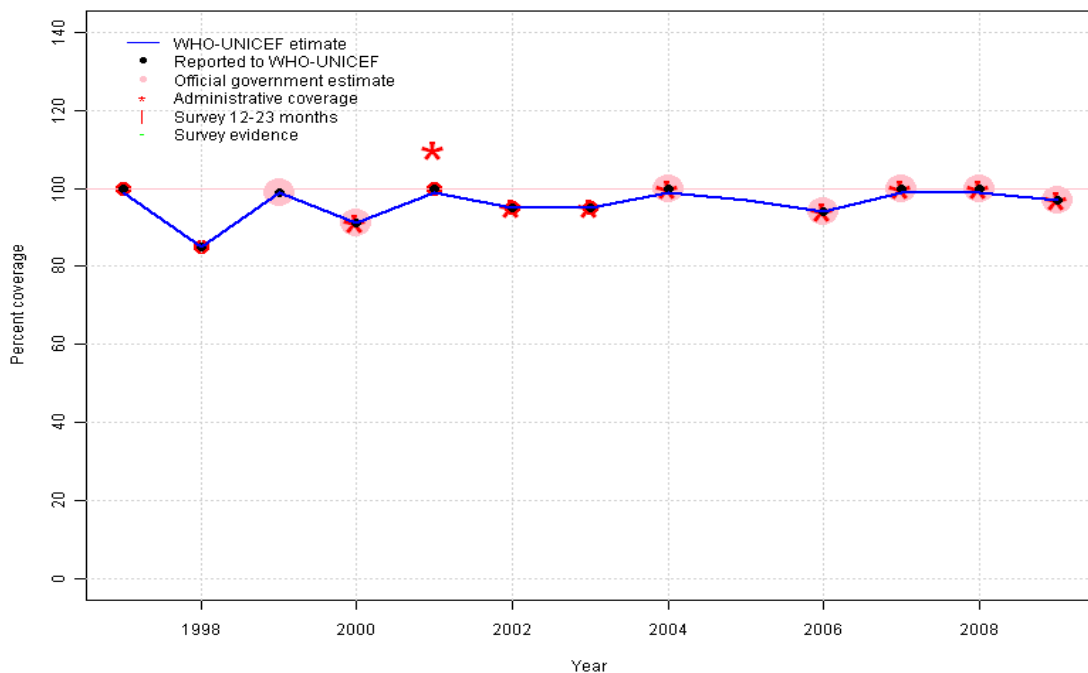


Saint Lucia: WHO and UNICEF estimates of immunization coverage, 1997 - 2009



Saint Lucia - BCG

LCA - BCG

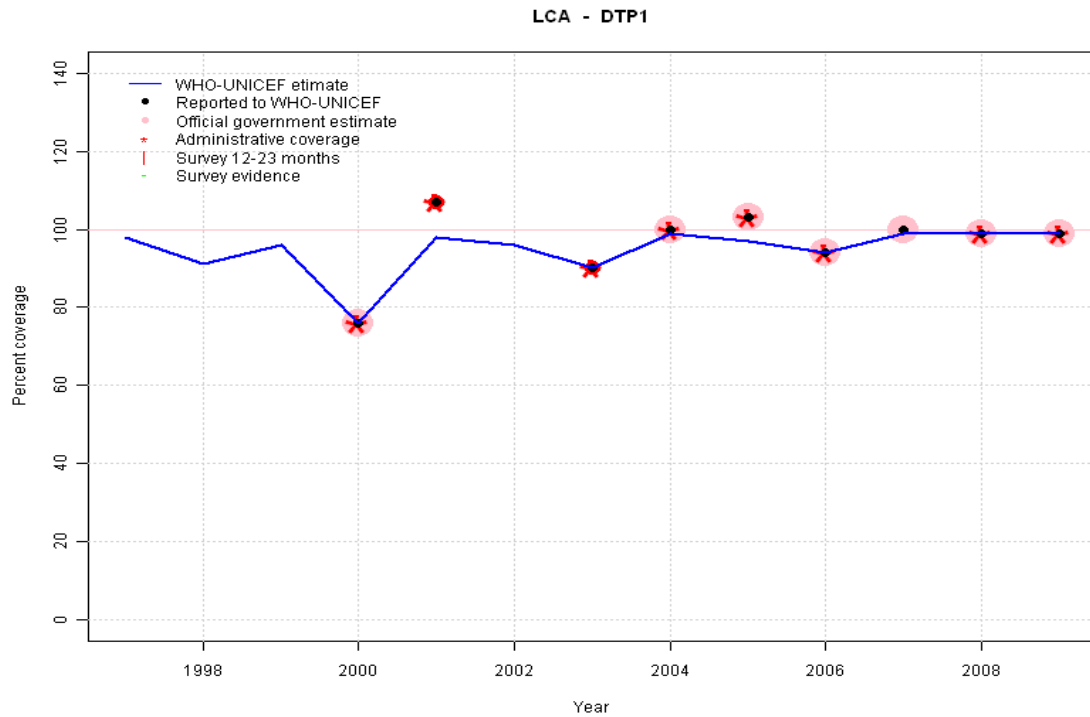


Description:

- 1997: Legacy estimate.
- 1998: Estimate based on reported data.
- 1999: Estimate based on reported data.
- 2000: Estimate based on reported data.
- 2001: Estimate based on reported data.
- 2002: Estimate based on reported data.
- 2003: Estimate based on reported data.
- 2004: Estimate based on reported data.
- 2005: Estimate based on trend in reported data. Missing or ignored reported value estimated by interpolation between reported values of 100 percent in 2004 and 94 percent in 2006.
- 2006: Estimate based on reported data.
- 2007: Estimate based on reported data.
- 2008: Estimate based on reported data.
- 2009: Estimate based on reported data.

	1997	1998	1999	2000	2001	2002	2003	2004	2005	2006	2007	2008	2009
Estimate	99	85	99	91	99	95	95	99	97	94	99	99	97
Reported	100	85	99	91	100	95	95	100	NA	94	100	100	97
Official	NA	NA	99	91	NA	NA	NA	100	NA	94	100	100	97
Administrative	NA	NA	NA	91	110	95	95	100	NA	94	100	100	97
Survey	NA	NA	NA	NA	NA	NA	NA	NA	NA	NA	NA	NA	NA

Saint Lucia - DTP1



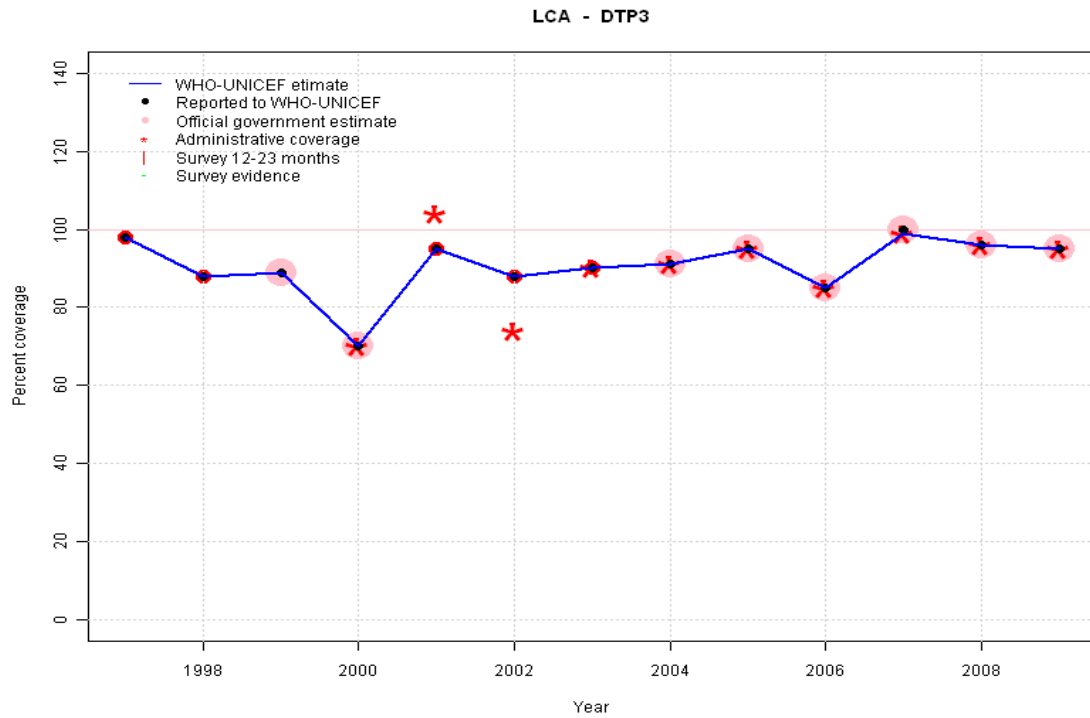
Description:

- 1997: Legacy estimate.
- 1998: Estimate interpolated between 1997 and 2000 estimates.
- 1999: Estimated DTP3 greater than estimated DTP1; DTP1 estimate based on the relationship between DTP1 and DTP3 from 282 surveys.
- 2000: Estimate is base on the reported data.
- 2001: Estimated DTP3 greater than estimated DTP1; DTP1 estimate based on the relationship between DTP1 and DTP3 from 282 surveys.
- 2002: Estimated DTP3 greater than estimated DTP1; DTP1 estimate based on the relationship between DTP1 and DTP3 from 282 surveys.
- 2003: Estimate based on reported data.
- 2004: Estimate based on reported data.
- 2005: Estimate based on trend in reported data. Missing or ignored reported value estimated by interpolation between reported values of 100 percent in 2004 and 94 percent in 2006. 2005 reported data (103 percent) ignored; greater than 100 percent.
- 2006: Estimate based on reported data.
- 2007: Estimate based on reported data.
- 2008: Estimate based on reported data.
- 2009: Estimate based on reported data.

	1997	1998	1999	2000	2001	2002	2003	2004	2005	2006	2007	2008	2009
Estimate	98	91	96	76	98	96	90	99	97	94	99	99	99
Reported	NA	NA	NA	76	107	NA	90	100	103	94	100	99	99
Official	NA	NA	NA	76	NA	NA	NA	100	103	94	100	99	99
Administrative	NA	NA	NA	76	107	NA	90	100	103	94	NA	99	99
Survey	NA	NA	NA	NA	NA	NA	NA	NA	NA	NA	NA	NA	NA

Saint Lucia - DTP3

Description:

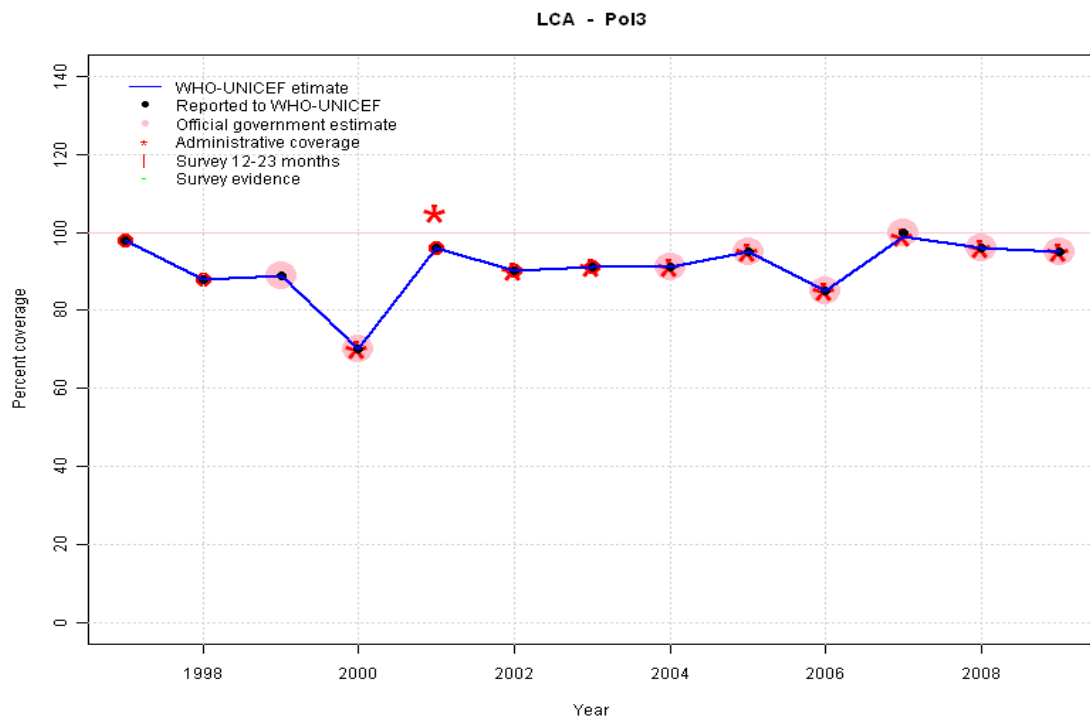


- 1997: Legacy estimate.
- 1998: Estimate based on reported data.
- 1999: Estimate based on reported data.
- 2000: Estimate based on reported data.
- 2001: Estimate based on reported data.
- 2002: Estimate based on reported data.
- 2003: Estimate based on reported data.
- 2004: Estimate based on reported data.
- 2005: Estimate based on reported data.
- 2006: Estimate based on reported data.
- 2007: Estimate based on reported data.
- 2008: Estimate based on reported data.
- 2009: Estimate based on reported data.

	1997	1998	1999	2000	2001	2002	2003	2004	2005	2006	2007	2008	2009
Estimate	98	88	89	70	95	88	90	91	95	85	99	96	95
Reported	98	88	89	70	95	88	90	91	95	85	100	96	95
Official	NA	NA	89	70	NA	NA	NA	91	95	85	100	96	95
Administrative	NA	NA	NA	70	104	74	90	91	95	85	99	96	95
Survey	NA	NA	NA	NA	NA	NA	NA	NA	NA	NA	NA	NA	NA

Saint Lucia - Pol3

Description:

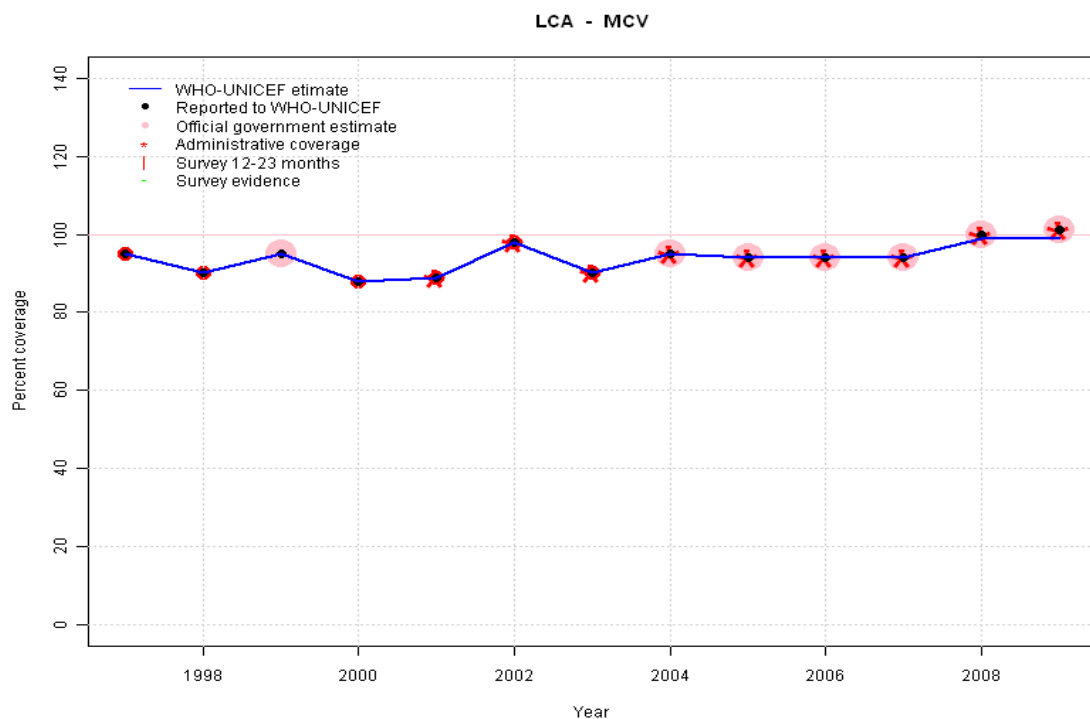


1997: Legacy estimate.
 1998: Estimate based on reported data.
 1999: Estimate based on reported data.
 2000: Estimate based on reported data.
 2001: Estimate based on reported data.
 2002: Estimate based on reported data.
 2003: Estimate based on reported data.
 2004: Estimate based on reported data.
 2005: Estimate based on reported data.
 2006: Estimate based on reported data.
 2007: Estimate based on reported data.
 2008: Estimate based on reported data.
 2009: Estimate based on reported data.

	1997	1998	1999	2000	2001	2002	2003	2004	2005	2006	2007	2008	2009
Estimate	98	88	89	70	96	90	91	91	95	85	99	96	95
Reported	98	88	89	70	96	90	91	91	95	85	100	96	95
Official	NA	NA	89	70	NA	NA	NA	91	95	85	100	96	95
Administrative	NA	NA	NA	70	105	90	91	91	95	85	99	96	95
Survey	NA	NA	NA	NA	NA	NA	NA	NA	NA	NA	NA	NA	NA

Saint Lucia - MCV

Description:



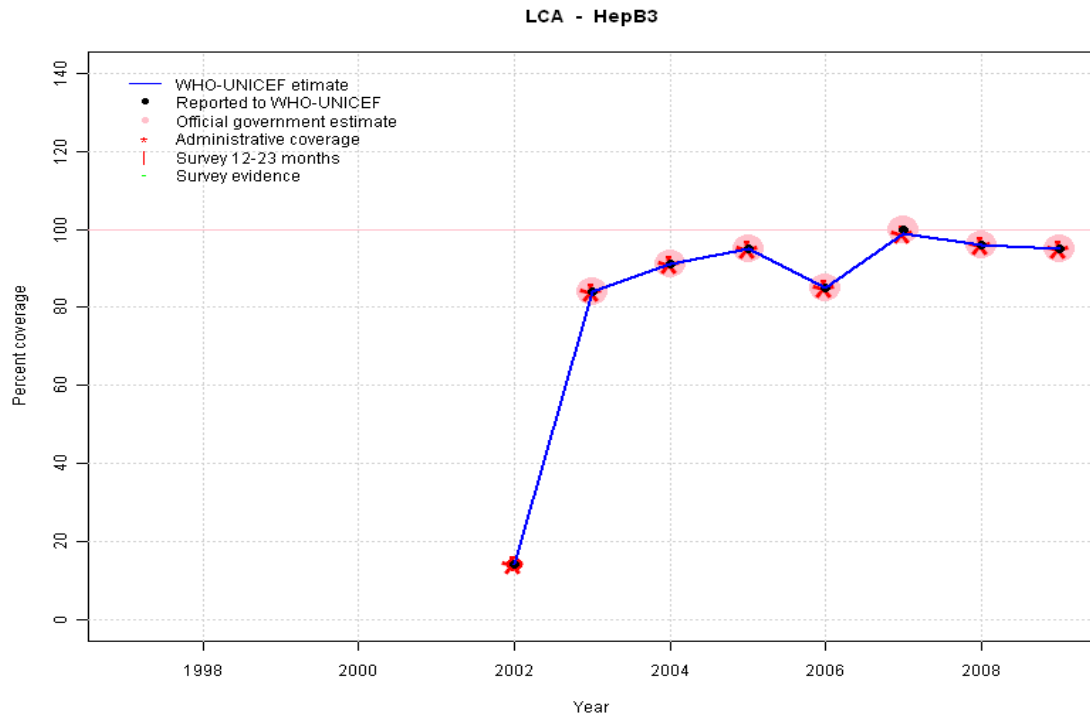
1997: Legacy estimate.
 1998: Estimate based on reported data.
 1999: Estimate based on reported data.
 2000: Estimate based on reported data.
 2001: Estimate based on reported data.
 2002: Estimate based on reported data.
 2003: Estimate based on reported data.
 2004: Estimate based on reported data.
 2005: Estimate based on reported data.
 2006: Estimate based on reported data.
 2007: Estimate based on reported data.
 2008: Estimate based on reported data.
 2009: Estimate based on trend in reported data. Missing or ignored reported value estimated by extrapolation from 2008 reported value of 99 percent. 2009 reported data (101 percent) ignored; greater than 100 percent.

	1997	1998	1999	2000	2001	2002	2003	2004	2005	2006	2007	2008	2009
Estimate	95	90	95	88	89	98	90	95	94	94	94	99	99
Reported	95	90	95	88	89	98	90	95	94	94	94	100	101
Official	NA	NA	95	NA	NA	NA	NA	95	94	94	94	100	101
Administrative	NA	NA	NA	NA	89	98	90	95	94	94	94	100	101
Survey	NA	NA	NA	NA	NA	NA	NA	NA	NA	NA	NA	NA	NA

Saint Lucia - HepB3

Description:

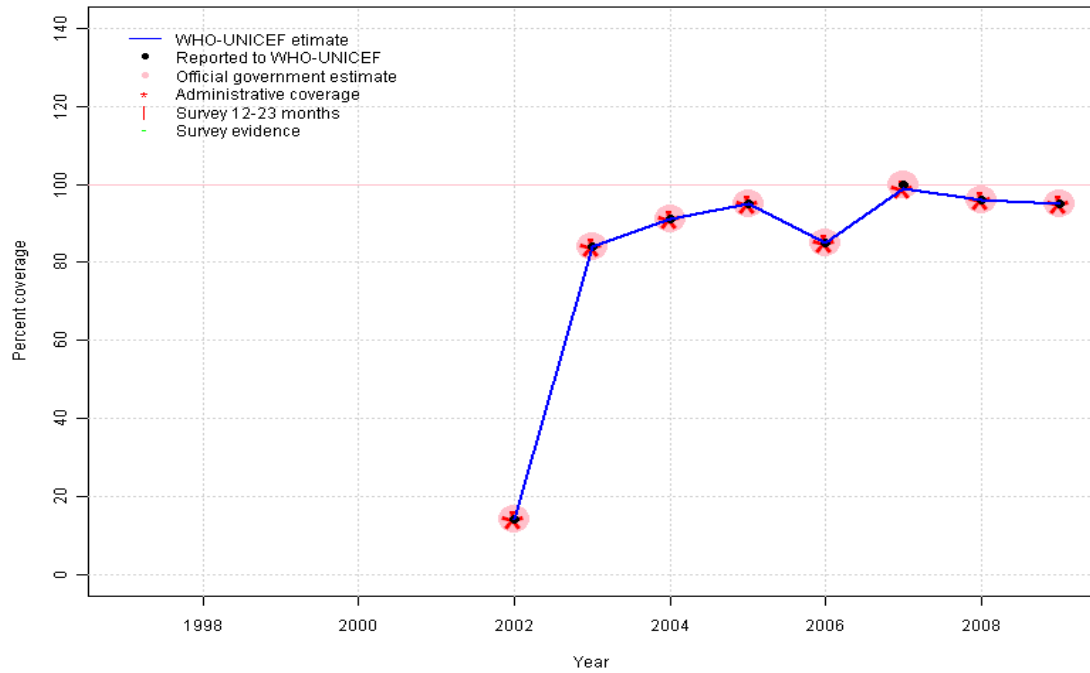
2002: Estimate based on reported data. HepB introduced in 2002 Vaccine presentation is DTP-HepB-Hib.
 2003: Estimate based on reported data.
 2004: Estimate based on reported data.
 2005: Estimate based on reported data.
 2006: Estimate based on reported data.
 2007: Estimate based on reported data.
 2008: Estimate based on reported data.
 2009: Estimate based on reported data.



	1997	1998	1999	2000	2001	2002	2003	2004	2005	2006	2007	2008	2009
Estimate	NA	NA	NA	NA	NA	14	84	91	95	85	99	96	95
Reported	NA	NA	NA	NA	NA	14	84	91	95	85	100	96	95
Official	NA	NA	NA	NA	NA	NA	84	91	95	85	100	96	95
Administrative	NA	NA	NA	NA	NA	14	84	91	95	85	99	96	95
Survey	NA	NA	NA	NA	NA	NA	NA	NA	NA	NA	NA	NA	NA

Saint Lucia - Hib3

LCA - Hib3

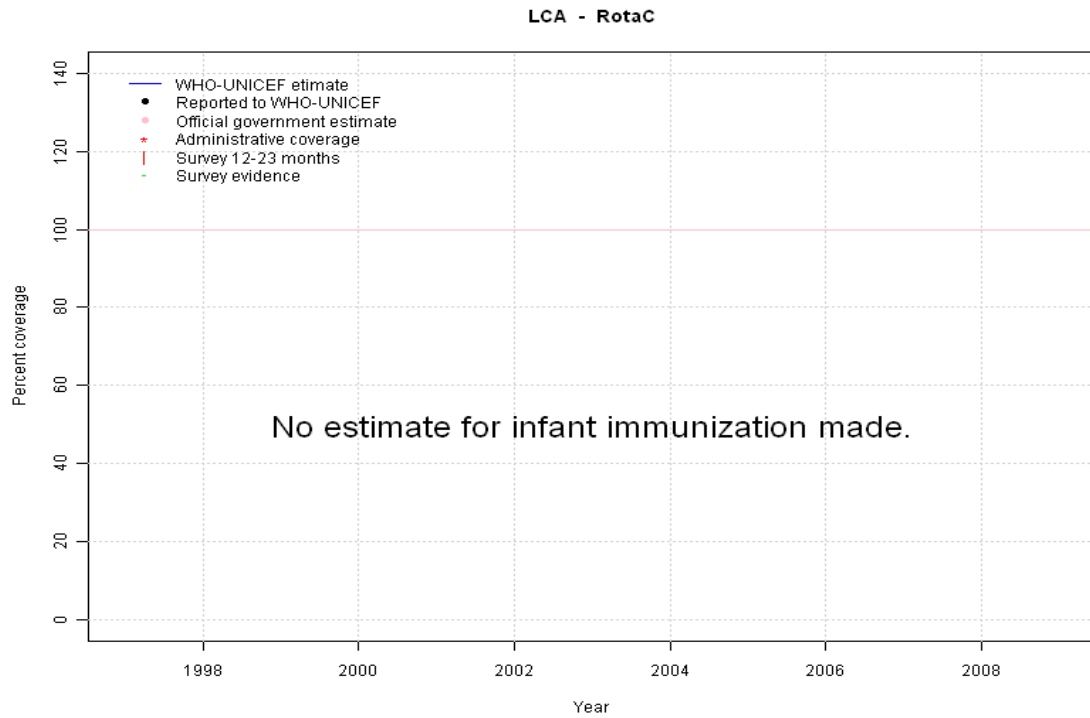


Description:

- 2002: Estimate based on reported data. Hib introduced in 2002 Vaccine presentation is DTP-HepB-Hib.
- 2003: Estimate based on reported data.
- 2004: Estimate based on reported data.
- 2005: Estimate based on reported data.
- 2006: Estimate based on reported data.
- 2007: Estimate based on reported data.
- 2008: Estimate based on reported data.
- 2009: Estimate based on reported data.

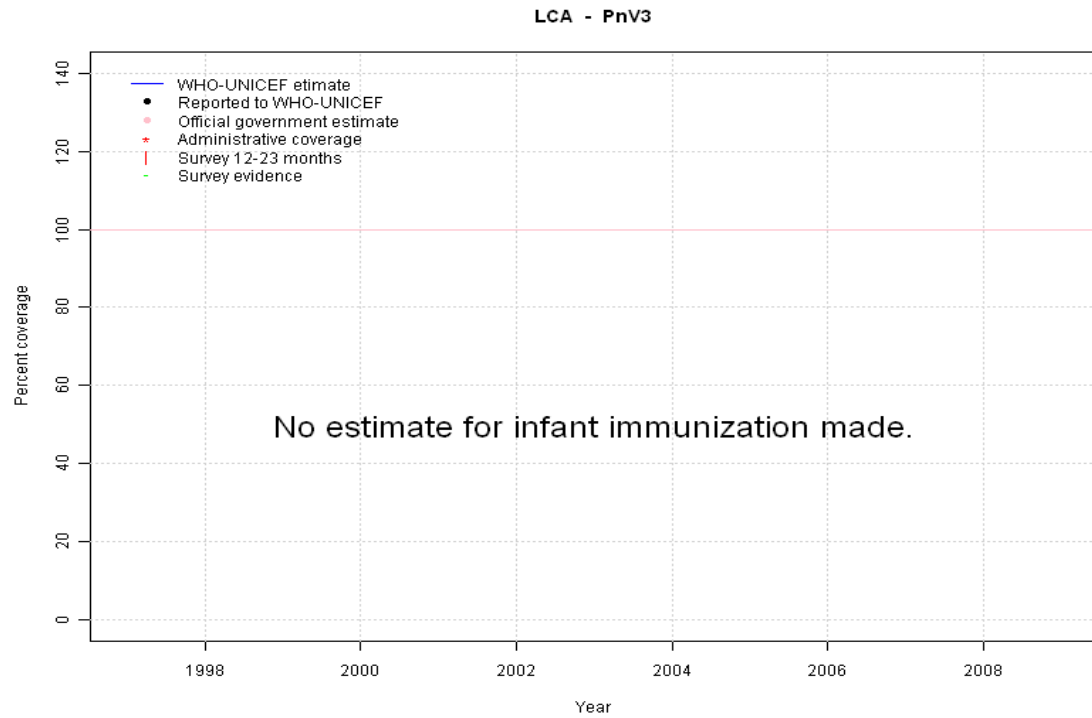
	1997	1998	1999	2000	2001	2002	2003	2004	2005	2006	2007	2008	2009
Estimate	NA	NA	NA	NA	NA	14	84	91	95	85	99	96	95
Reported	NA	NA	NA	NA	NA	14	84	91	95	85	100	96	95
Official	NA	NA	NA	NA	NA	14	84	91	95	85	100	96	95
Administrative	NA	NA	NA	NA	NA	14	84	91	95	85	99	96	95
Survey	NA	NA	NA	NA	NA	NA	NA	NA	NA	NA	NA	NA	NA

Saint Lucia - RotaC



	1997	1998	1999	2000	2001	2002	2003	2004	2005	2006	2007	2008	2009
Estimate	NA	NA	NA	NA	NA	NA	NA	NA	NA	NA	NA	NA	NA
Reported	NA	NA	NA	NA	NA	NA	NA	NA	NA	NA	NA	NA	NA
Official	NA	NA	NA	NA	NA	NA	NA	NA	NA	NA	NA	NA	NA
Administrative	NA	NA	NA	NA	NA	NA	NA	NA	NA	NA	NA	NA	NA
Survey	NA	NA	NA	NA	NA	NA	NA	NA	NA	NA	NA	NA	NA

Saint Lucia - PnV3



	1997	1998	1999	2000	2001	2002	2003	2004	2005	2006	2007	2008	2009
Estimate	NA	NA	NA	NA	NA	NA	NA	NA	NA	NA	NA	NA	NA
Reported	NA	NA	NA	NA	NA	NA	NA	NA	NA	NA	NA	NA	NA
Official	NA	NA	NA	NA	NA	NA	NA	NA	NA	NA	NA	NA	NA
Administrative	NA	NA	NA	NA	NA	NA	NA	NA	NA	NA	NA	NA	NA
Survey	NA	NA	NA	NA	NA	NA	NA	NA	NA	NA	NA	NA	NA

Further information and estimates for 1980-1996 are available at:

http://www.childinfo.org/immunization_countryreports.html

http://www.who.int/immunization_monitoring/routine/immunization_coverage/en/index4.html