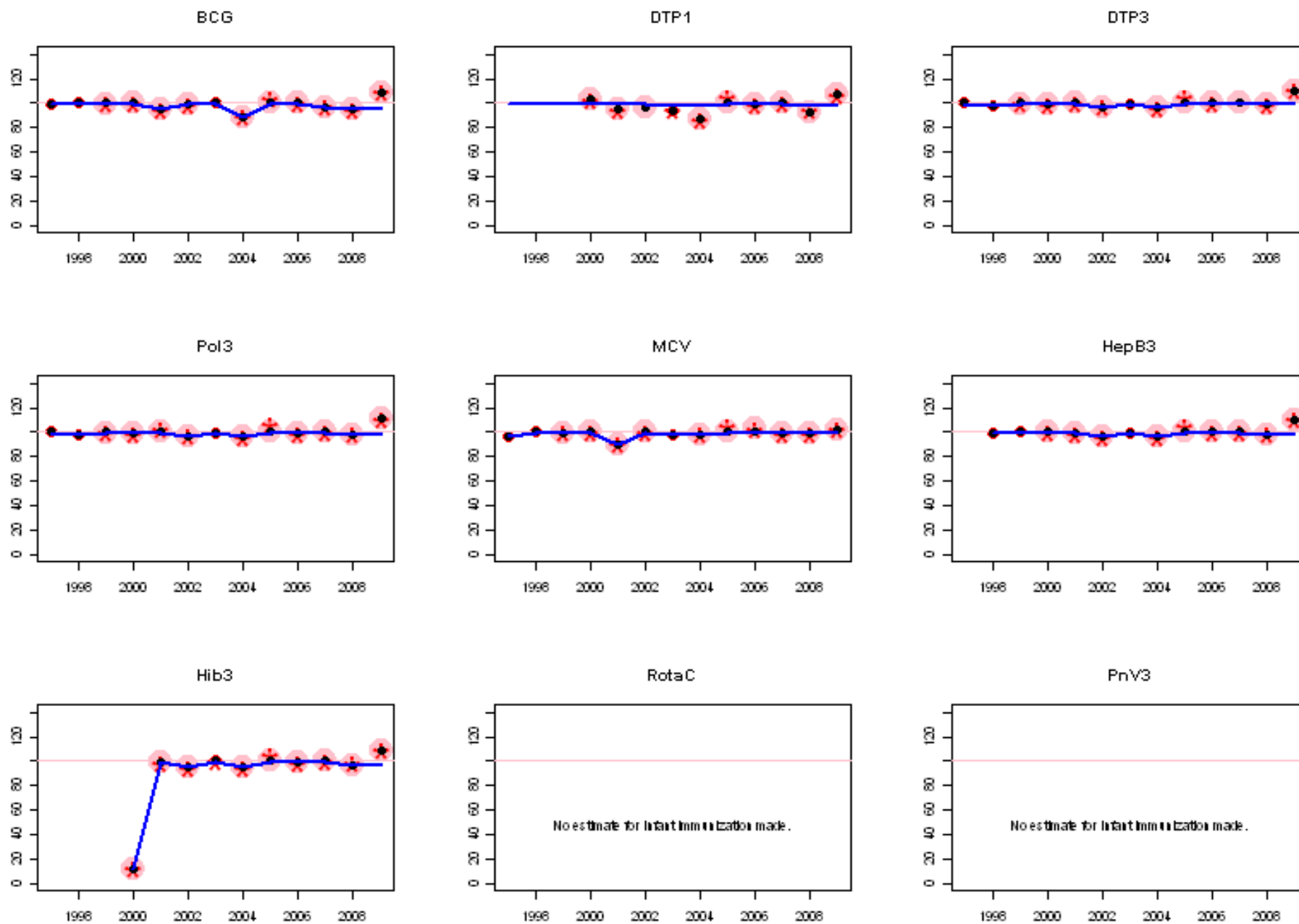
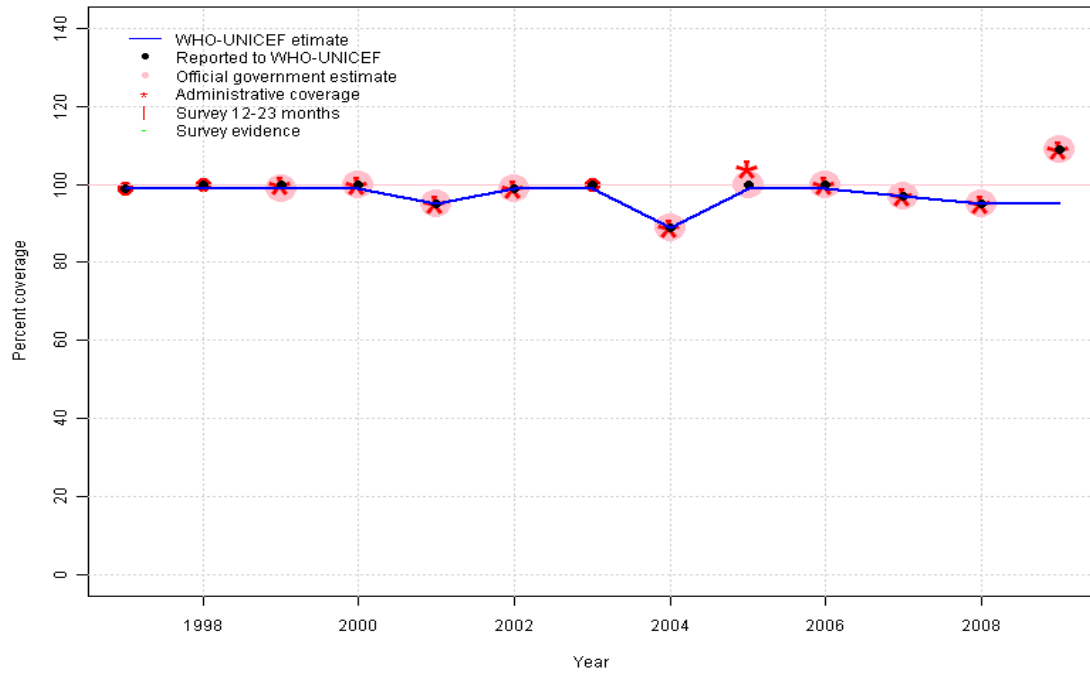


Saint Kitts and Nevis: WHO and UNICEF estimates of immunization coverage, 1997 - 2009



Saint Kitts and Nevis - BCG

KNA - BCG



Description:

1997: Legacy estimate.

1998: Estimate based on reported data.

1999: Estimate based on reported data.

2000: Estimate based on reported data.

2001: Estimate based on reported data.

2002: Estimate based on reported data.

2003: Estimate based on reported data.

2004: Estimate based on reported data.

2005: Estimate based on reported data.

2006: Estimate based on reported data.

2007: Estimate based on reported data.

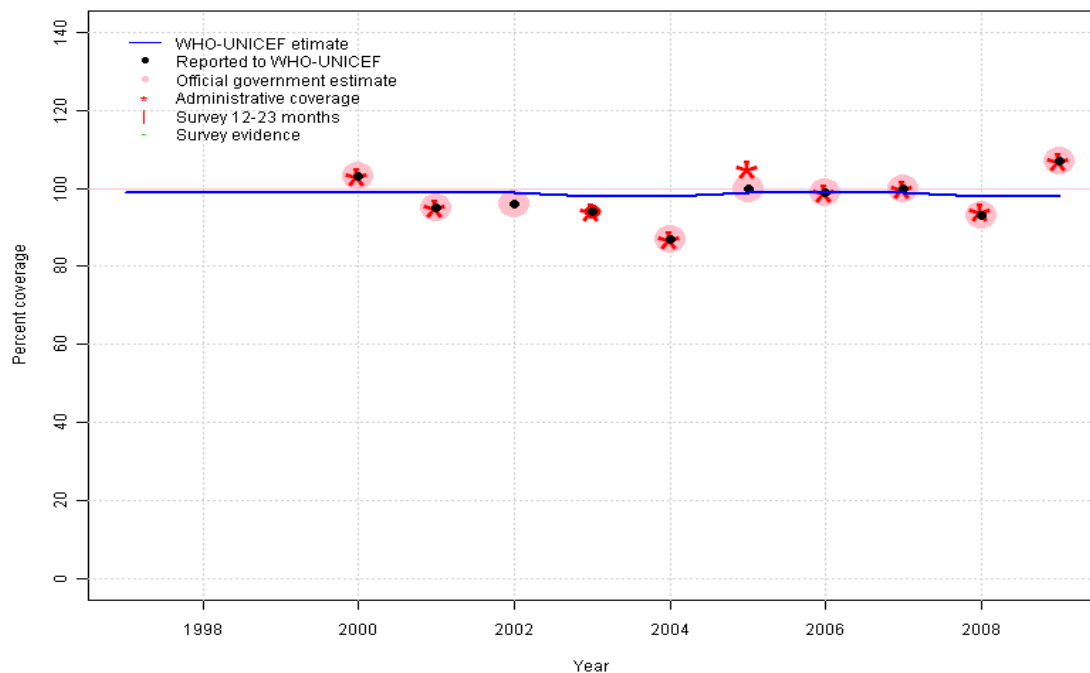
2008: Estimate based on reported data.

2009: Estimate based on trend in reported data. Missing or ignored reported value estimated by extrapolation from 2008 reported value of 95 percent. 2009 reported data (109 percent) ignored; greater than 100 percent. 2009 reported data (109 percent) inconsistent with data from other years.

	1997	1998	1999	2000	2001	2002	2003	2004	2005	2006	2007	2008	2009
Estimate	99	99	99	99	95	99	99	89	99	99	97	95	95
Reported	99	100	100	100	95	99	100	89	100	100	97	95	109
Official	NA	NA	99	100	95	99	NA	89	100	100	97	95	109
Administrative	NA	NA	100	100	95	99	NA	89	104	100	97	95	109
Survey	NA	NA	NA	NA	NA	NA	NA	NA	NA	NA	NA	NA	NA

Saint Kitts and Nevis - DTP1

KNA - DTP1



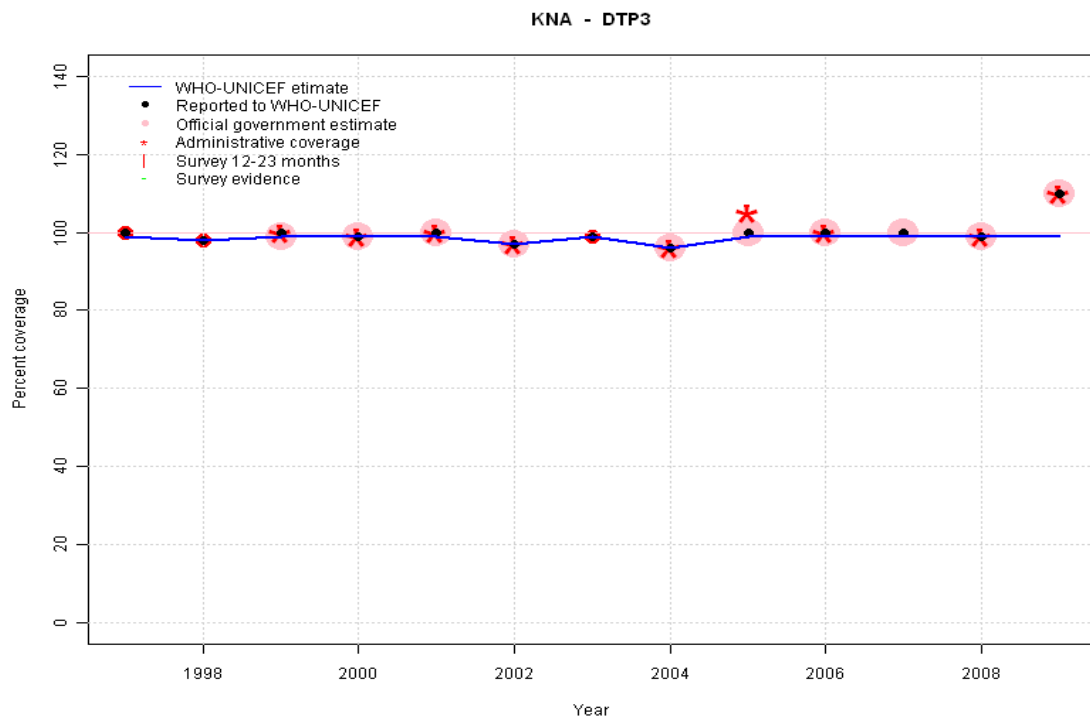
	1997	1998	1999	2000	2001	2002	2003	2004	2005	2006	2007	2008	2009
Estimate	99	99	99	99	99	99	98	98	99	99	99	98	98
Reported	NA	NA	NA	103	95	96	94	87	100	99	100	93	107
Official	NA	NA	NA	103	95	96	NA	87	100	99	100	93	107
Administrative	NA	NA	NA	103	95	NA	94	87	105	99	100	94	107
Survey	NA	NA	NA	NA	NA	NA	NA	NA	NA	NA	NA	NA	NA

Description:

- 1997: Legacy estimate.
- 1998: Estimate calibrated to 1997 level (99 percent) and reported coverage (95 percent).
- 1999: Estimate calibrated to 1997 level (99 percent) and reported coverage (95 percent).
- 2000: Estimate calibrated to 1997 level (99 percent) and reported coverage (95 percent). 2000 reported data (103 percent) ignored; greater than 100 percent.
- 2001: Estimate calibrated to 1997 level (99 percent) and reported coverage (95 percent).
- 2002: Estimate calibrated to 1997 level (99 percent) and reported coverage (96 percent).
- 2003: Estimated DTP3 greater than estimated DTP1; DTP1 estimate based on the relationship between DTP1 and DTP3 from 282 surveys.
- 2004: Estimated DTP3 greater than estimated DTP1; DTP1 estimate based on the relationship between DTP1 and DTP3 from 282 surveys.
- 2005: Estimate calibrated to 1997 level (99 percent) and reported coverage (99 percent).
- 2006: Estimate calibrated to 1997 level (99 percent) and reported coverage (99 percent).
- 2007: Estimate calibrated to 1997 level (99 percent) and reported coverage (99 percent).
- 2008: Estimated DTP3 greater than estimated DTP1; DTP1 estimate based on the relationship between DTP1 and DTP3 from 282 surveys.
- 2009: Estimated DTP3 greater than estimated DTP1; DTP1 estimate based on the relationship between DTP1 and DTP3 from 282 surveys.

Saint Kitts and Nevis - DTP3

Description:

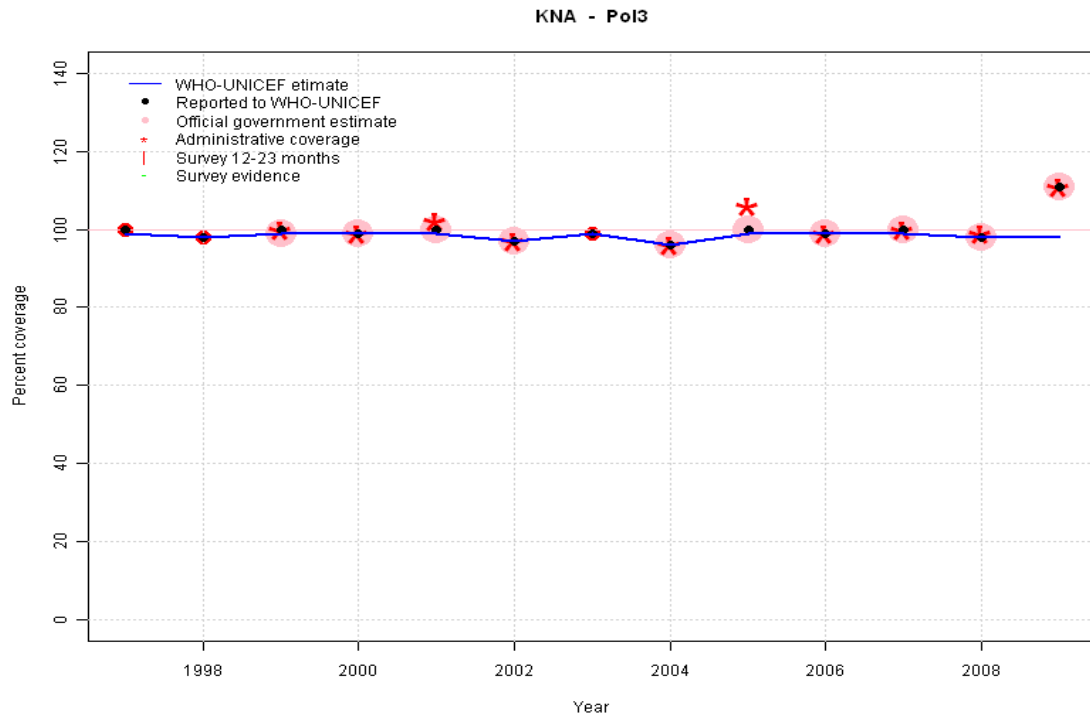


1997: Legacy estimate.
 1998: Estimate based on reported data.
 1999: Estimate based on reported data.
 2000: Estimate based on reported data.
 2001: Estimate based on reported data.
 2002: Estimate based on reported data.
 2003: Estimate based on reported data.
 2004: Estimate based on reported data.
 2005: Estimate based on reported data.
 2006: Estimate based on reported data.
 2007: Estimate based on reported data.
 2008: Estimate based on reported data.
 2009: Estimate based on trend in reported data. Missing or ignored reported value estimated by extrapolation from 2008 reported value of 99 percent. 2009 reported data (110 percent) ignored; greater than 100 percent. 2009 reported data (110 percent) inconsistent with data from other years.

	1997	1998	1999	2000	2001	2002	2003	2004	2005	2006	2007	2008	2009
Estimate	99	98	99	99	99	97	99	96	99	99	99	99	99
Reported	100	98	100	99	100	97	99	96	100	100	100	99	110
Official	NA	NA	99	99	100	97	NA	96	100	100	100	99	110
Administrative	NA	NA	100	99	100	97	NA	96	105	100	NA	99	110
Survey	NA	NA	NA	NA	NA	NA	NA	NA	NA	NA	NA	NA	NA

Saint Kitts and Nevis - Pol3

Description:

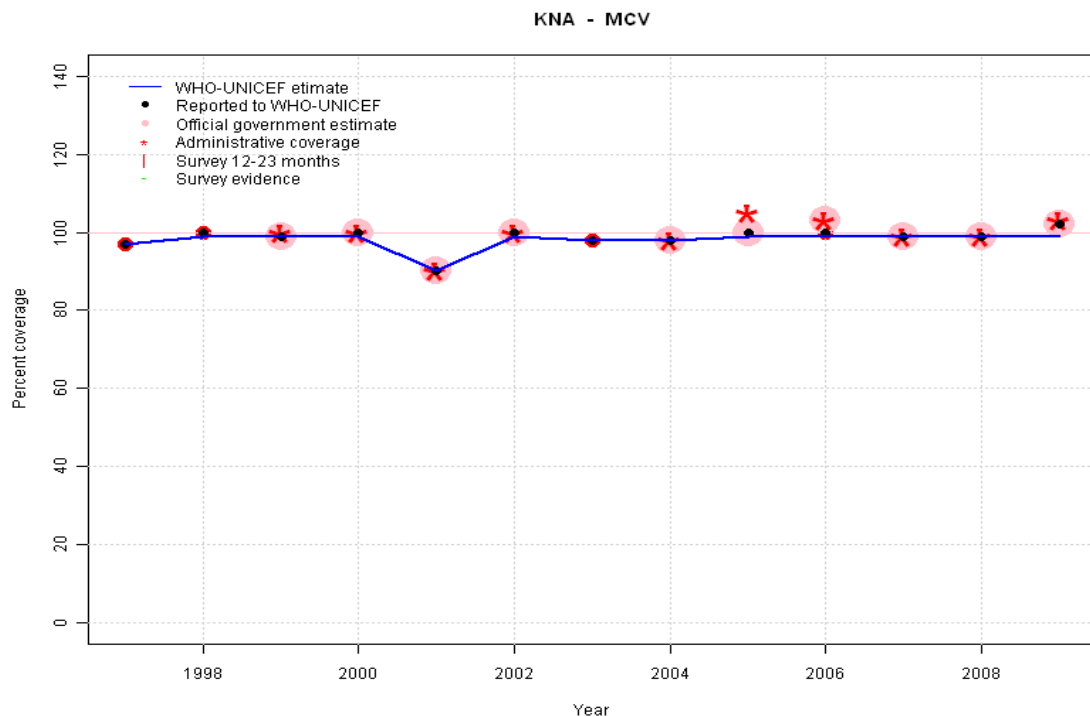


- 1997: Legacy estimate.
- 1998: Estimate based on reported data.
- 1999: Estimate based on reported data.
- 2000: Estimate based on reported data.
- 2001: Estimate based on reported data.
- 2002: Estimate based on reported data.
- 2003: Estimate based on reported data.
- 2004: Estimate based on reported data.
- 2005: Estimate based on reported data.
- 2006: Estimate based on reported data.
- 2007: Estimate based on reported data.
- 2008: Estimate based on reported data.
- 2009: Estimate based on trend in reported data. Missing or ignored reported value estimated by extrapolation from 2008 reported value of 98 percent. 2009 reported data (111 percent) ignored; greater than 100 percent. 2009 reported data (111 percent) inconsistent with data from other years.

	1997	1998	1999	2000	2001	2002	2003	2004	2005	2006	2007	2008	2009
Estimate	99	98	99	99	99	97	99	96	99	99	99	98	98
Reported	100	98	100	99	100	97	99	96	100	99	100	98	111
Official	NA	NA	99	99	100	97	NA	96	100	99	100	98	111
Administrative	NA	NA	100	99	102	97	NA	96	106	99	100	99	111
Survey	NA	NA	NA	NA	NA	NA	NA	NA	NA	NA	NA	NA	NA

Saint Kitts and Nevis - MCV

Description:

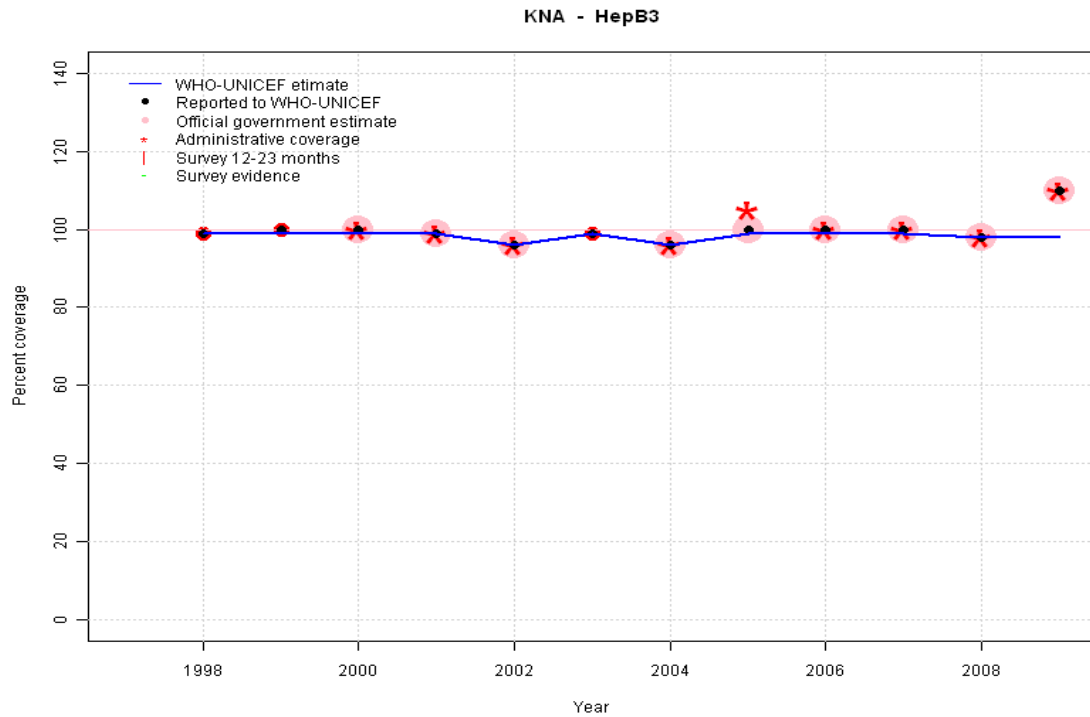


- 1997: Legacy estimate.
- 1998: Estimate based on reported data.
- 1999: Estimate based on reported data.
- 2000: Estimate based on reported data.
- 2001: Estimate based on reported data.
- 2002: Estimate based on reported data.
- 2003: Estimate based on reported data.
- 2004: Estimate based on reported data.
- 2005: Estimate based on reported data.
- 2006: Estimate based on reported data.
- 2007: Estimate based on reported data.
- 2008: Estimate based on reported data.
- 2009: Estimate based on trend in reported data. Missing or ignored reported value estimated by extrapolation from 2008 reported value of 99 percent. 2009 reported data (102 percent) ignored; greater than 100 percent.

	1997	1998	1999	2000	2001	2002	2003	2004	2005	2006	2007	2008	2009
Estimate	97	99	99	99	90	99	98	98	99	99	99	99	99
Reported	97	100	99	100	90	100	98	98	100	100	99	99	102
Official	NA	NA	99	100	90	100	NA	98	100	103	99	99	102
Administrative	NA	NA	100	100	90	100	NA	98	105	103	99	99	103
Survey	NA	NA	NA	NA	NA	NA	NA	NA	NA	NA	NA	NA	NA

Saint Kitts and Nevis - HepB3

Description:



1998: Estimate based on reported data. HepB introduced in 1997. Reporting started in 1998.

1999: Estimate based on reported data.

2000: Estimate based on reported data.

2001: Estimate based on reported data.

2002: Estimate based on reported data.

2003: Estimate based on reported data.

2004: Estimate based on reported data.

2005: Estimate based on reported data.

2006: Estimate based on reported data.

2007: Estimate based on reported data.

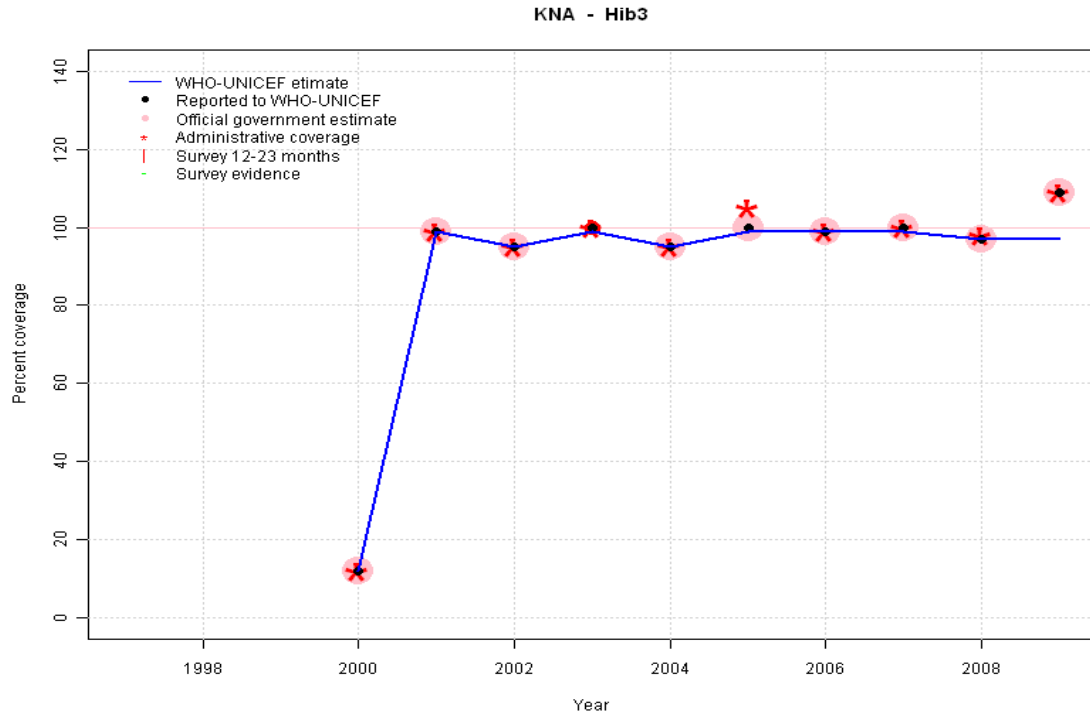
2008: Estimate based on reported data.

2009: Estimate based on reported data. Missing or ignored reported value estimated by extrapolation from 2008 reported value of 98 percent. 2009 reported data (110 percent) ignored; greater than 100 percent. 2009 reported data (110 percent) inconsistent with data from other years.

	1997	1998	1999	2000	2001	2002	2003	2004	2005	2006	2007	2008	2009
Estimate	NA	99	99	99	99	96	99	96	99	99	99	98	98
Reported	NA	99	100	100	99	96	99	96	100	100	100	98	110
Official	NA	NA	NA	100	99	96	NA	96	100	100	100	98	110
Administrative	NA	NA	NA	100	99	96	NA	96	105	100	100	98	110
Survey	NA	NA	NA	NA	NA	NA	NA	NA	NA	NA	NA	NA	NA

Saint Kitts and Nevis - Hib3

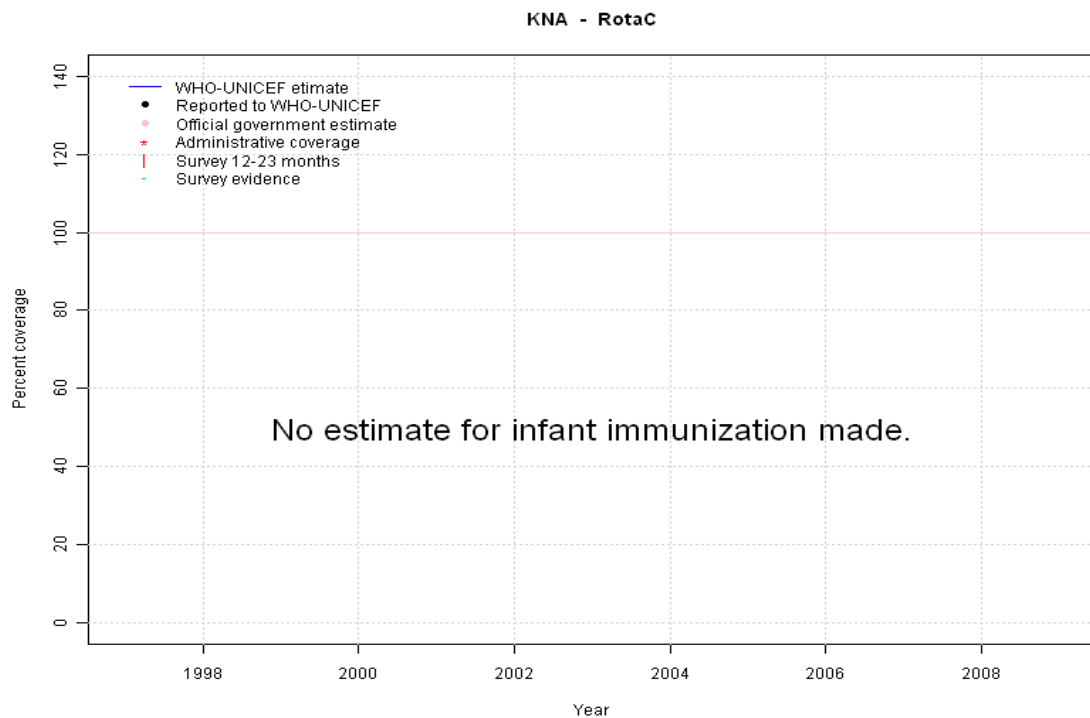
Description:



- 2000: Estimate based on reported data. Hib introduced in 2000
- 2001: Estimate based on reported data.
- 2002: Estimate based on reported data.
- 2003: Estimate based on reported data.
- 2004: Estimate based on reported data.
- 2005: Estimate based on reported data.
- 2006: Estimate based on reported data.
- 2007: Estimate based on reported data.
- 2008: Estimate based on reported data.
- 2009: Estimate based on reported data. Missing or ignored reported value estimated by extrapolation from 2008 reported value of 97 percent. 2009 reported data (109 percent) ignored; greater than 100 percent. 2009 reported data (109 percent) inconsistent with data from other years.

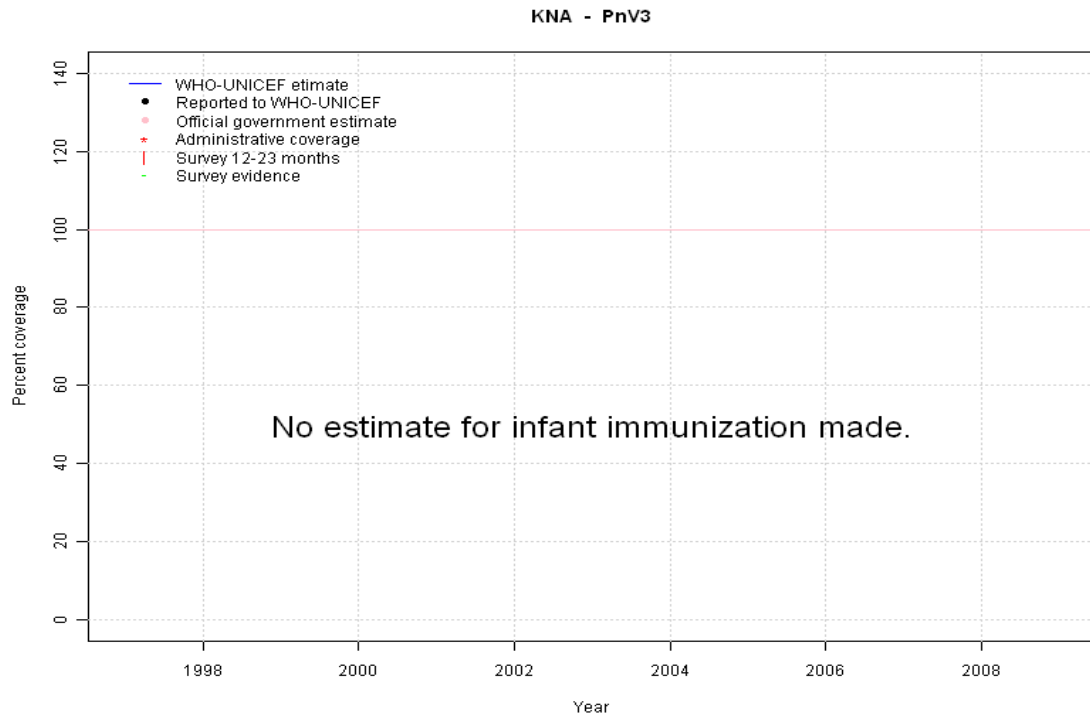
	1997	1998	1999	2000	2001	2002	2003	2004	2005	2006	2007	2008	2009
Estimate	NA	NA	NA	12	99	95	99	95	99	99	99	97	97
Reported	NA	NA	NA	12	99	95	100	95	100	99	100	97	109
Official	NA	NA	NA	12	99	95	NA	95	100	99	100	97	109
Administrative	NA	NA	NA	12	99	95	100	95	105	99	100	98	109
Survey	NA	NA	NA	NA	NA	NA	NA	NA	NA	NA	NA	NA	NA

Saint Kitts and Nevis - RotaC



	1997	1998	1999	2000	2001	2002	2003	2004	2005	2006	2007	2008	2009
Estimate	NA	NA	NA	NA	NA	NA	NA	NA	NA	NA	NA	NA	NA
Reported	NA	NA	NA	NA	NA	NA	NA	NA	NA	NA	NA	NA	NA
Official	NA	NA	NA	NA	NA	NA	NA	NA	NA	NA	NA	NA	NA
Administrative	NA	NA	NA	NA	NA	NA	NA	NA	NA	NA	NA	NA	NA
Survey	NA	NA	NA	NA	NA	NA	NA	NA	NA	NA	NA	NA	NA

Saint Kitts and Nevis - PnV3



	1997	1998	1999	2000	2001	2002	2003	2004	2005	2006	2007	2008	2009
Estimate	NA	NA	NA	NA	NA	NA	NA	NA	NA	NA	NA	NA	NA
Reported	NA	NA	NA	NA	NA	NA	NA	NA	NA	NA	NA	NA	NA
Official	NA	NA	NA	NA	NA	NA	NA	NA	NA	NA	NA	NA	NA
Administrative	NA	NA	NA	NA	NA	NA	NA	NA	NA	NA	NA	NA	NA
Survey	NA	NA	NA	NA	NA	NA	NA	NA	NA	NA	NA	NA	NA

Further information and estimates for 1980-1996 are available at:

http://www.childinfo.org/immunization_countryreports.html

http://www.who.int/immunization_monitoring/routine/immunization_coverage/en/index4.html