



**WHO / UNICEF**

**Joint Monitoring Programme  
for Water Supply and Sanitation**

Coverage Estimates  
**Improved Sanitation**

Updated in July 2008

---

**Sao Tome & Principe**

---

# PRINCIPE

MICS		2000	
SANITATION	Urban	Rural	
Sistema de esgoto ou fossa séptica	20.8	12.5	
Latrine com descarga de água	2.1	1.7	
Latrina melhorada	8.1	5.1	
Latrina tradicional	1.9	1.1	
Mata, praia ou campo	66.9	79.5	
otro	0.2	0.1	
<b>TOTAL</b>	100.0	100.0	
Sewerage connection estimated based on MICS06	6.9	5.2	
<b>* 50% of latrina tradicional considered to be improved</b>	1.0	0.6	
Use of an improved sanitation facility	<b>32%</b>	<b>20%</b>	
% Sewerage connection	7%	5%	

Source: Multiple Indicator Cluster Survey, 2000

ENCV		2000	
SANITATION		Total	
Chasse d'eau a fosse septic		16.1	
Latrine a fosse ventilee		3.7	
Latrina ordinaire		8.5	
Dans la nature		69.1	
otro		2.6	
<b>TOTAL</b>		100.0	
<b>* 50% of latrina tradicional considered to be improved</b>		4.3	
Use of an improved sanitation facility		<b>24%</b>	
% Sewerage connection			

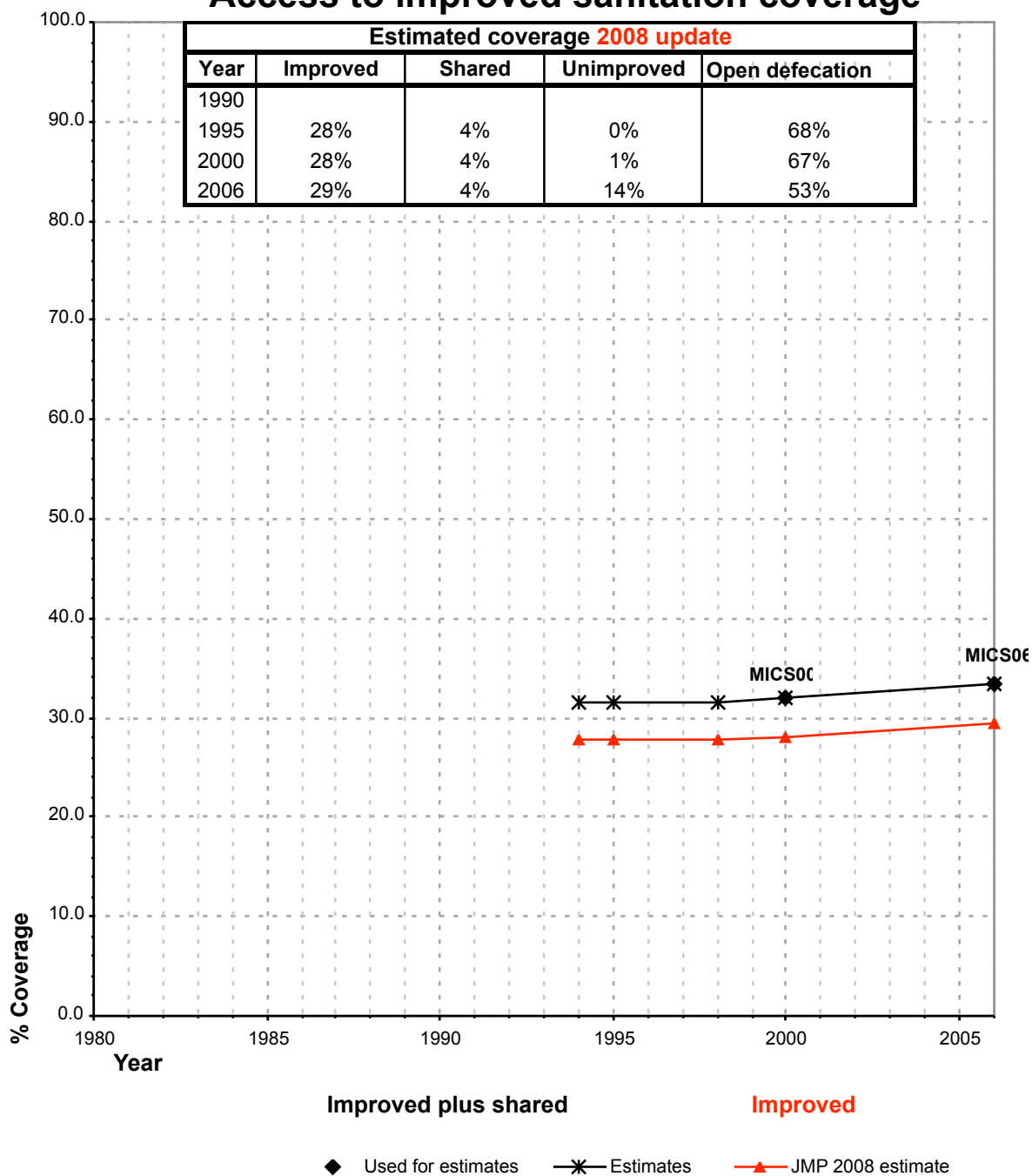
Rapport de l'emquete nationale sur les conditions de vie des menages 2000

<b>MICS</b>		<b>2006</b>	
Shared improved facilities		0.12	0.22
<b>SANITATION</b>		<b>Urban</b>	<b>Rural</b>
Casa de banho ligada ao esgoto		7.1	6.2
Casa de banho ligada a fossa séptica		14.4	8.6
Casa de banho ligada a latrinas		1.4	0.5
Latrinas melhoradas auto-arejadas (LAA)		1.8	0.7
Latrina coberta		8.0	5.5
Casa de banho ligada a um local desconhecido/pouco seguro/NS		0.7	1.4
Casa de banho ligada a outra coisa		0.0	0.2
Latrina com fossa/buraco coberto		7.8	5.1
Não tem casa de banho ou mato		53.2	67.8
Outro		5.5	4.0
<b>TOTAL</b>		<b>99.9</b>	<b>100.0</b>
<b>ratio sewerage/septic tank</b>		<b>0.33</b>	<b>0.42</b>
Use of an improved sanitation facility		<b>33%</b>	<b>23%</b>
% Sewerage connection		7%	6%

Source: Multiple Indicator Cluster Survey, 2006

Sao Tome and Principe			SANITATION								OPEN DEFECCATION			
			URBAN				RURAL							
			HC		Total		HC		Total		Urban		Rural	
Source	Code	Year	Used for estimates	Not used for estimates	Used for estimates	Not used for estimates	Used for estimates	Not used for estimates	Used for estimates	Not used for estimates	Used for estimates	Not used for estimates	Used for estimates	Not used for estimates
Multiple Indicator Cluster Survey, Final Report, 2000.	MICS00	2000	6.9		32.0		5.2		19.9		66.9		79.5	
Multiple Indicator Cluster Survey, 2006.	MICS06	2006	7.1		33.4		6.2		22.9		53.2		67.8	

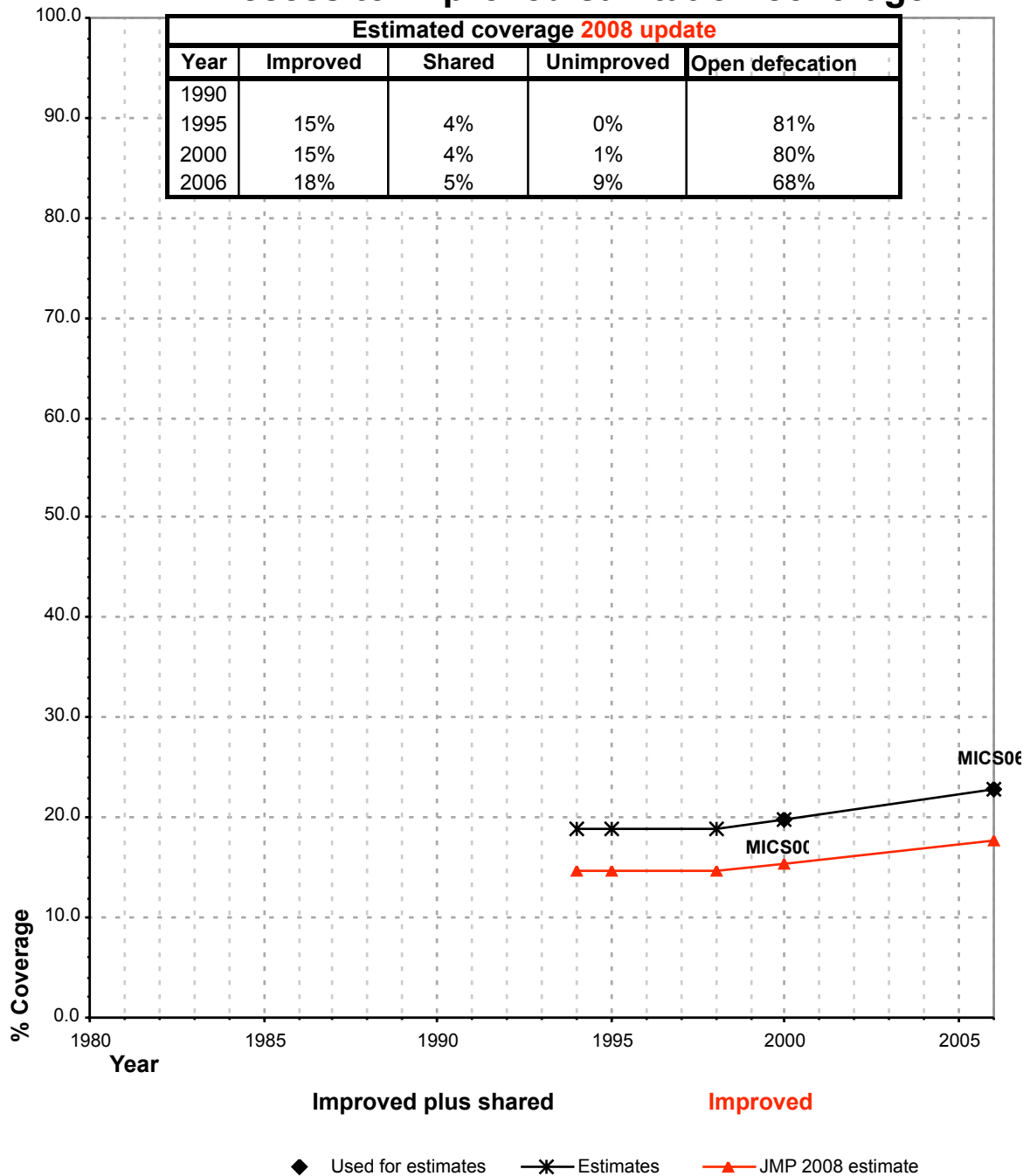
# Sao Tome and Principe - urban - Access to improved sanitation coverage



### Shared facilities :

The proportion of the population using a shared improved sanitation facility is based on the MICS0c

# Sao Tome and Principe - rural - Access to improved sanitation coverage



**Shared facilities :**  
The proportion of the population using a shared improved sanitation facility is based on the MICS06