



WHO / UNICEF

**Joint Monitoring Programme
for Water Supply and Sanitation**

Coverage Estimates

Improved Drinking Water

Updated in July 2008

Senegal

Senegal

DHS	1986	
	Urban	Rural
WATER		
Private Running Water	50.6	1.4
Public Pump	0.1	4.3
Private Well	5.5	4.5
Public Well	4.4	76.0
Public Spring	39.4	7.5
River	0.0	4.4
Lake	0.0	0.6
Private Other	0.0	0.0
Public Other	0.0	1.2
TOTAL	100.0	100.0
protected wells estimated on basis of MICS00 & WHS03	5.7	31.0
protected springs estimated on basis of MICS 00	0.0	2.0
Safe Drinking Water (incl. 50% Well & Spring)	56%	39%
% House connections	51%	1%

Source: Senegal Demographic and Health Survey 1986.

DHS	1993	
	Urban	Rural
WATER		
Tap in Household	54.1	7.6
Standpipe	30	12.1
Borehole	0.7	8.4
Well in Yard	5.7	5.6
Public Well	7.7	59.6
Spring	0	3.8
River/Stream	0	0.8
Pond/Lake	0	0.1
Not Defined/Not Specified	1.8	1.9
TOTAL	100	99.9
protected wells estimated on basis of MICS00 & WHS03	7.8	25.1
protected springs estimated on basis of MICS 00	0.0	1.0
Safe Drinking Water (incl. 50% Well & Spring)	93%	54%
% House connections	54%	8%

Source: Senegal Demographic and Health Survey 1992-93.

Survey

DHS	1997	
	Urban	Rural
WATER		
Tap in Household	64.2	7.3
Standpipe	20.2	17.1
Borehole	0.1	5.9
Rainwater	0.1	0
Well in Yard	4.6	5.7
Public Well	8	59.5
Spring	0.3	2
River/Stream	0	0.7
Pond/Lake	0.1	0
Dam	0	0.1
Tanker	0	0.1
Bottled Water	0.6	0
Other	1.7	1.2
Not Defined/Not Specified	0.1	0.4
TOTAL	100	100
protected wells estimated on basis of MICS00 & WHS03	7.3	25.1
protected springs estimated on basis of MICS 00	0.0	0.5
Safe Drinking Water (incl. 50% Well & Spring)	92%	56%
% House connections	64%	7%

Source: Senegal Demographic and Health Survey 1997.

DHS	1999	
	Urban	Rural
WATER		
Robinet dans le logement	65.7	8.1
Robinet Public	16.5	19.1
Puits dans le logement	4.9	6.2
Puits public	7	51.7
Forage	0.1	7.9
Riviere/Ruisseau/fleuve	0.3	1.8
Mare/Marigot	0	1
Eau de bouteille	0.1	0
Vendeur d'eau/camion citerne	0.9	0.2
Autre	3.9	3.2
Manquant	0.5	0.8
TOTAL	99.9	100

protected wells estimated on basis of MICS00 & WHS03	6.9	22.3
Access to improved drinking water sources	89%	57%
% House connections	66%	8%

Source: Senegal Demographic and Health Survey 1999.

MICS			2000		
WATER	Urban	Rural			
Robinet dans le logement	22.9	3.1			
Robinet dans la cour/parcelle	45.7	7			
Borne Fontaine	18.9	19.9			
Puits a pompe	0.1	1.9			
Puits protégé	3.8	14.5			
Source protegee	0	0.6			
Eau de pluie	0	0			
Eau de bouteille	0.1	0.3			
Puits non protégé	4.9	42.9			
Source non protegee	0.5	1.7			
mare ruisseau ou fleuve	0	3.1			
Camion citerne, vendeur d'eau	0.1	0.3			
Forage	0.1	4			
Manquant	2.8	0.7			
NSP	0	0.1			
TOTAL	99.9	100.1			
<i>ratio protected wells/ all wells</i>	<i>0.45</i>	<i>0.34</i>			
<i>ratio protected springs/ all springs</i>	<i>0.00</i>	<i>0.26</i>			
Access to improved drinking water sources	92%	51%			
% House connections	69%	10%			

Source: Rapport de l'enquete sur les objectifs de la fin de decennie sur l'enfance (MICS-II), Gouvernement du Senegal & UNICEF, 2000

WHS			2003		
WATER	Urban	Rural			
Piped water through house connection or yard	73.7	22.9			
Public standpipe	11.6	18.6			
Protected tube well or bore hole	2.4	9.0			
Protected dug well or protected spring	5.5	14.7			
Rainwater (into tank or cistern)	0.0	0.3			
Unprotected dug well or spring	3.3	32.2			
Water taken directly from pond-water or stream	3.5	1.8			
Tanker-truck, vendor	0.0	0.6			
TOTAL	100.0	100.0			
Ratio of protected /all wells and springs	0.70	0.42			
Access to improved drinking water sources	93%	65%			
% House connections	74%	23%			

Source: World Health Survey, WHO, 2003.

DHS 2005		
WATER	Urban	Rural
Eau du robinet dans le logement	50.4	6.6
Eau du robinet dans la cour/concession	25.2	9.5
Fontaine publique	13.5	24.1
Puits protégé dans le logement	0.5	0.7
Puits protégé dans la cour/concession	0.2	0.6
Puits public protégé	1.2	9.2
Eau de pluie	0	0
Puits ouvert dans le logement	0.9	1.4
Puits ouvert dans la cour	1.6	3.4
Puits public ouvert	3.8	39.9
Source	0	0.3
Rivière, fleuve	0	1.4
Mare, lac	0	0.2
Camion citerne	0	0
Eau en bouteille	0.4	0.1
Manquant	2.2	2.5
TOTAL	99.9	99.9
protected wells estimated on basis of MICS00 & WHS03	3.64526	17.18
protected springs estimated on basis of MICS 00	0.0	0.1
Access to improved drinking water sources	95%	68%
% House connections	76%	16%

Source: Senegal Demographic and Health Survey 2005.

Census		
Census	1988	
(Population in thousands)		
WATER	Urban	Rural
Household connections	1'093.0	129.0
Public standpipe / neighbour's tap	1'373.0	536.0
Private well	160.0	282.0
Communal well	213.0	2'382.0
Borehole	3.0	310.0
Spring / surface water	16.0	189.0
Others	114.0	171.0
Total population (1988)	2'972.0	3'999.0
protected wells estimated on basis of MICS00 & WHS03	215.8	1'023.9
protected springs estimated on basis of MICS 00	0.0	49.3
Population with safe drinking water (including 50% wells)	90%	51%
% House connections	37%	3%

Source: 1988 National census data as recorded on the Global Water Supply and Sanitation Assessment 2000. Water Supply and Sanitation Sector Questionnaire - 1999.

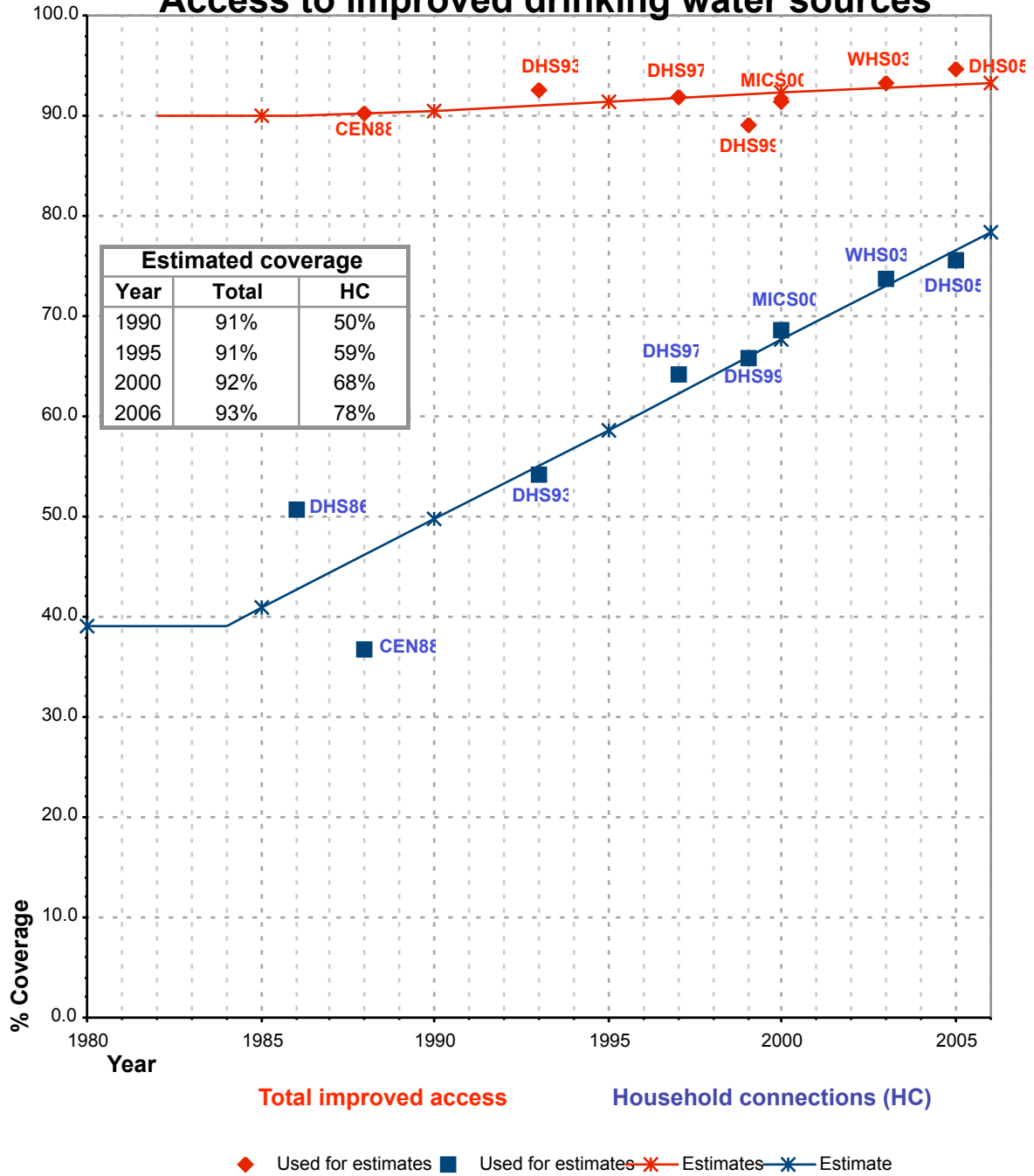
Estimate

FORM-6/WHO	1999	
(Population in thousands)		
WATER	Urban	Rural
Population served with household connection	1'999.5	
Population without household connection but with reasonable access to a public water point	833.5	
Total population served	2'833.0	1'317.0
Total population unserved	1'068.3	3'747.5
Total urban population	3'901.3	5'064.5
Population with safe drinking water	73%	26%
% House connections	51%	

Global Water Supply and Sanitation Assessment 2000. Water Supply and Sanitation Sector Questionnaire - 1999. (Form 6 sent to WHO)

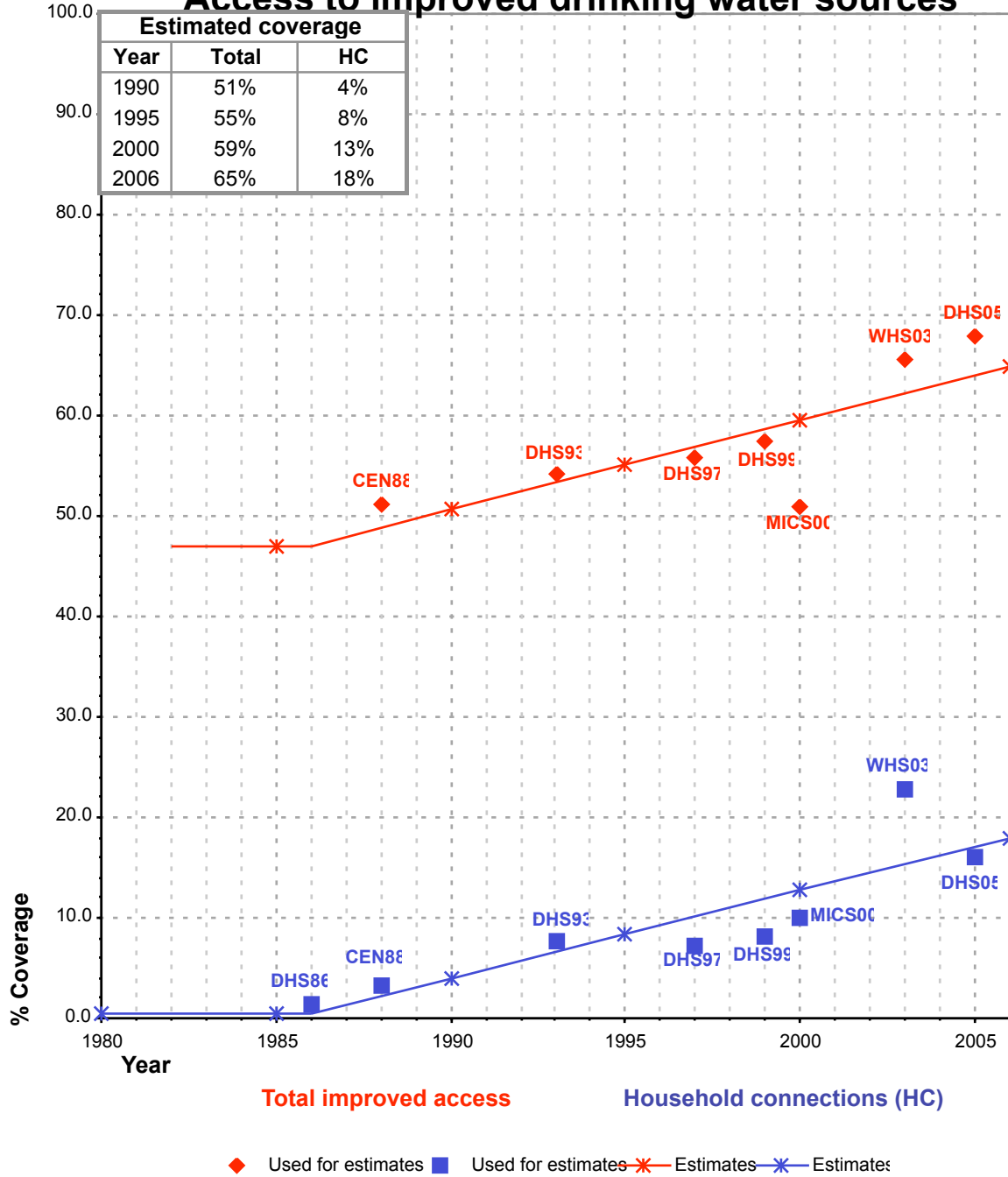
Senegal			DRINKING WATER							
			URBAN				RURAL			
			HC		Total		HC		Total	
Source	Code	Year	Used for estimates	Not used for estimates	Used for estimates	Not used for estimates	Used for estimates	Not used for estimates	Used for estimates	Not used for estimates
The International Drinking Water Supply and Sanitation Decade. Review of National Baseline Data (as at December 1980). WHO 1984	WHO80	1980		33.0		77.0				25.0
The International Drinking Water Supply and Sanitation Decade. Review of National Progress (as at December 1983). WHO 1986.	WHO83	1983		28.0		69.0				27.0
The International Drinking Water Supply and Sanitation Decade. Review of Mid-Decade Progress (as at December 1985). WHO 1987.	WHO85	1985		33.0		79.0				38.0
Senegal Demographic and Health Survey 1986.	DHS86	1986	50.6			56.4	1.4			35.4
Source:National census 1988 as recorded on the Global Water Supply and Sanitation Assessment 2000. Water Supply and Sanitation Sector Questionnaire - 1999.	CEN88	1988	36.8		90.3		3.2		51.2	
The International Drinking Water Supply and Sanitation Decade. End of Decade Review (as at December 1990). WHO1992.	WHO90	1990		30.0		65.0				26.0
Water Supply and Sanitation Sector Monitoring Report 1993 (Sector Status as of 31 December 1991)	JMP93	1991				84.0				84.0
Senegal Demographic and Health Survey 1992-93.	DHS93	1993	54.1		92.6		7.6		54.2	
Water Supply and Sanitation Sector Monitoring Report - 1996. Sector Status as of 31 Decem	JMP96	1994				82.0				28.0
Senegal Demographic and Health Survey 1997.	DHS97	1997	64.2		91.9		7.3		55.9	
Global Water Supply and Sanitation Assessment 2000. Water Supply and Sanitation Sector Q	JMP99	1999		51.3		73.0				26.0
Senegal Demographic and Health Survey 1999.	DHS99	1999	65.7		89.2		8.1		57.4	
Rapport de l'enquete sur les objectifs de la fin de decennie sur l'enfance (MICS-II), Gouvernement du Senegal & UNICEF, 2000	MICS00	2000	68.6		91.5		10.1		51.0	
World Health Survey, WHO, 2003.	WHS03	2003	73.7		93.2		22.9		65.5	
Senegal Demographic and Health Survey 2005	DHS05	2005	75.6		94.6		16.1		68.0	

Senegal - urban - Access to improved drinking water sources



Total access :
Household connections :

Senegal - rural - Access to improved drinking water sources



Total access :
Household connections :