



WHO / UNICEF

**Joint Monitoring Programme
for Water Supply and Sanitation**

Coverage Estimates
Improved Sanitation

Updated in July 2008

Sudan

Urban and Rural Sanitation - Sud

DHS		1987	
SANITATION	Urban	Rural	
Flush	16.8	0.3	
Pit Latrine	71.9	53.3	
Bucket	1.8	0.5	
No Facilities	9.1	45.2	
Other	0.3	0.7	
Missing	0.1	0.1	
TOTAL	100.0	100.1	
50% of pit latrines estimated to be improved	36.0	26.6	
Estimated sewerage connections based on ratio Papchild 93	6.4	0.1	

Use of an improved sanitation facility	53%	27%
% Sewerage connections	6%	0%

Source: Sudanese Demographic and Health Survey 1987

DHS		1989	
SANITATION	Urban	Rural	
Flush	16.1	0.3	
Pit Latrine	70.7	48.7	
Bucket	1.7	0.7	
No Facilities	11.1	49.8	
Other	0.4	0.5	
TOTAL	99.6	99.5	
50% of pit latrines estimated to be improved	35.4	24.4	
Estimated sewerage connections based on ratio Papchild 93	6.1	0.1	

Use of an improved sanitation facility	51%	25%
% Sewerage connections	6%	0%

Source: Sudanese Demographic and Health Survey 1989

lan

PAPCHILD		1992	
SANITATION	Urban	Rural	
Toilet with Flush Connected to Network	8.4	0.7	
Toilet with Tank	3.4	0.6	
Joint Toilet Inside Building	1.5	1.2	
Toilet with Flush not Connected to Network	8.7	1.0	
Public Toilet Inside Building	0.8	1.8	
Pit in the Ground	67.9	44.5	
Open Air	6.4	48.2	
Other	3.0	1.8	
Not Indicated	0.0	0.1	
TOTAL	100.1	99.9	
50% of pit latrines estimated to be improved	34.0	22.3	
Ratio of flush to network	0.38	0.20	

Use of an improved sanitation facility	56%	26%
% Sewerage connections	8%	1%

Source: Sudanese PAPCHILD Survey 1992/1993

MICS		2000	
SANITATION	Urban	Rural	
Flush to sewage system	0.2	0.1	
Flush to septic tank	14.0	1.1	
Soak-away pit	3.5	1.0	
Traditional pit latrine	64.9	44.5	
No facilities	14.6	51.9	
others	2.4	1.0	
missing	0.4	0.5	
TOTAL	100.0	100.1	
50% of pit latrines estimated to be improved	32.5	22.3	

Use of an improved sanitation facility	50%	24%
% Sewerage connections	0%	0%

Source: MICS, 2000 North Sudan

CENSUS		1993
(Population in thousands)		
SANITATION	Urban	Rural
Flush	1100	54
Pit Latrine	4950	8800
Bucket	120	130
No Facility	880	9000
Other	28	90
TOTAL*	7050	17984
50% of pit latrines estimated to be improved	2475	4400
Estimated sewerage connections based on ratio Papchild 93	420	10.8
Use of an improved sanitation facility	51%	25%
% Sewerage connections	6%	0%

Source: 1993 census as recorded in the Global Water Supply and Sanitation Assessment 2000. Water Supply and Sanitation Questionnaire - 1000

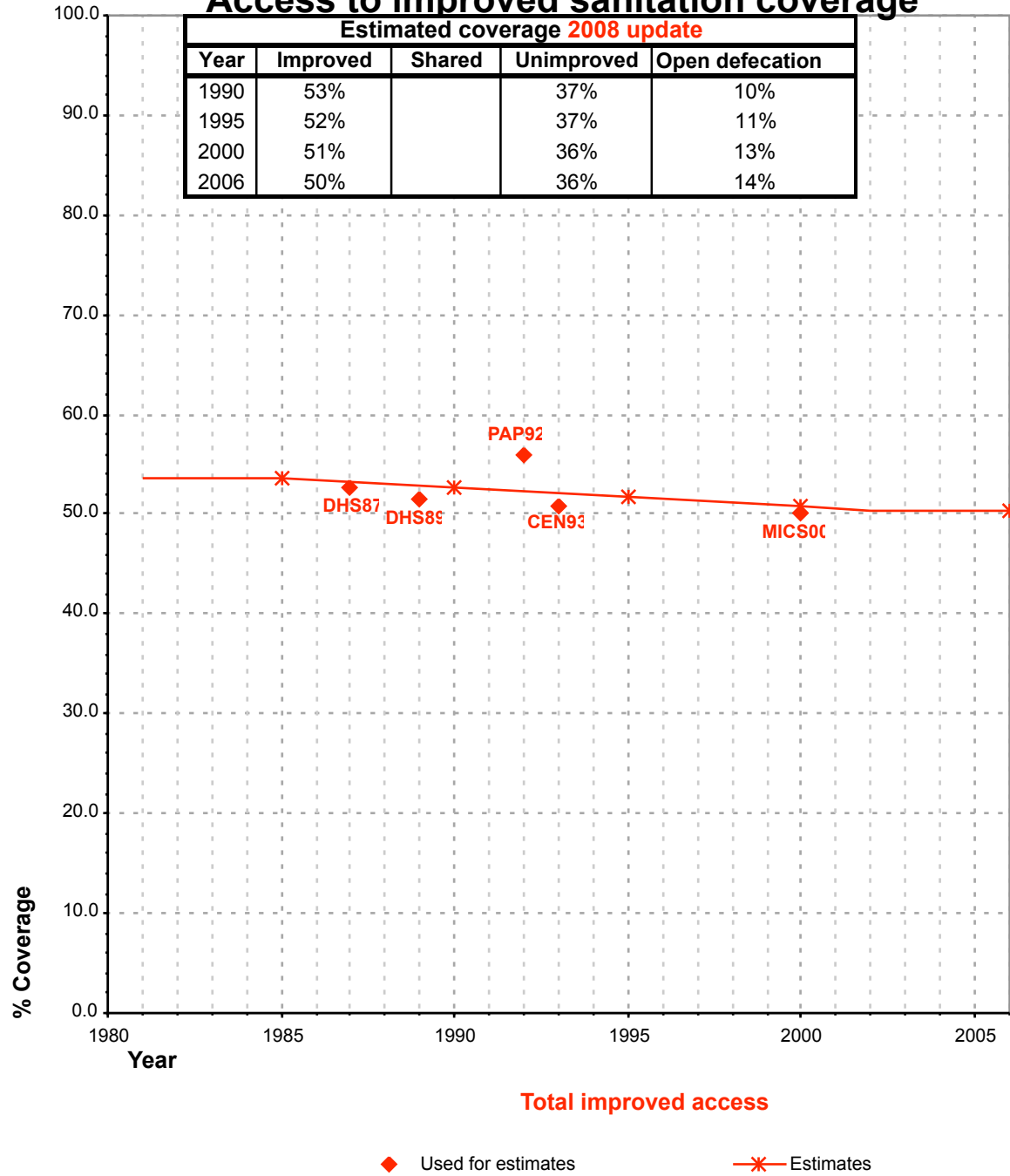
*Discrepancies in census totals

FORM6/WHO		1999	
(Population in thousands)			
SANITATION	Urban	Rural	
Population served with household connections to conventional sewers	250	0	
adequate, private or shared on-site system	7000	9180	
Total population unserved	250	8820	
Total population	7500	18000	
Use of an improved sanitation facility	97%	51%	
% Sewerage connections	3%	0%	

Source: *Global Water Supply and Sanitation Assessment 2000. Water Supply and Sanitation Questionnaire - 1999. Form 6 sent to WHO.*

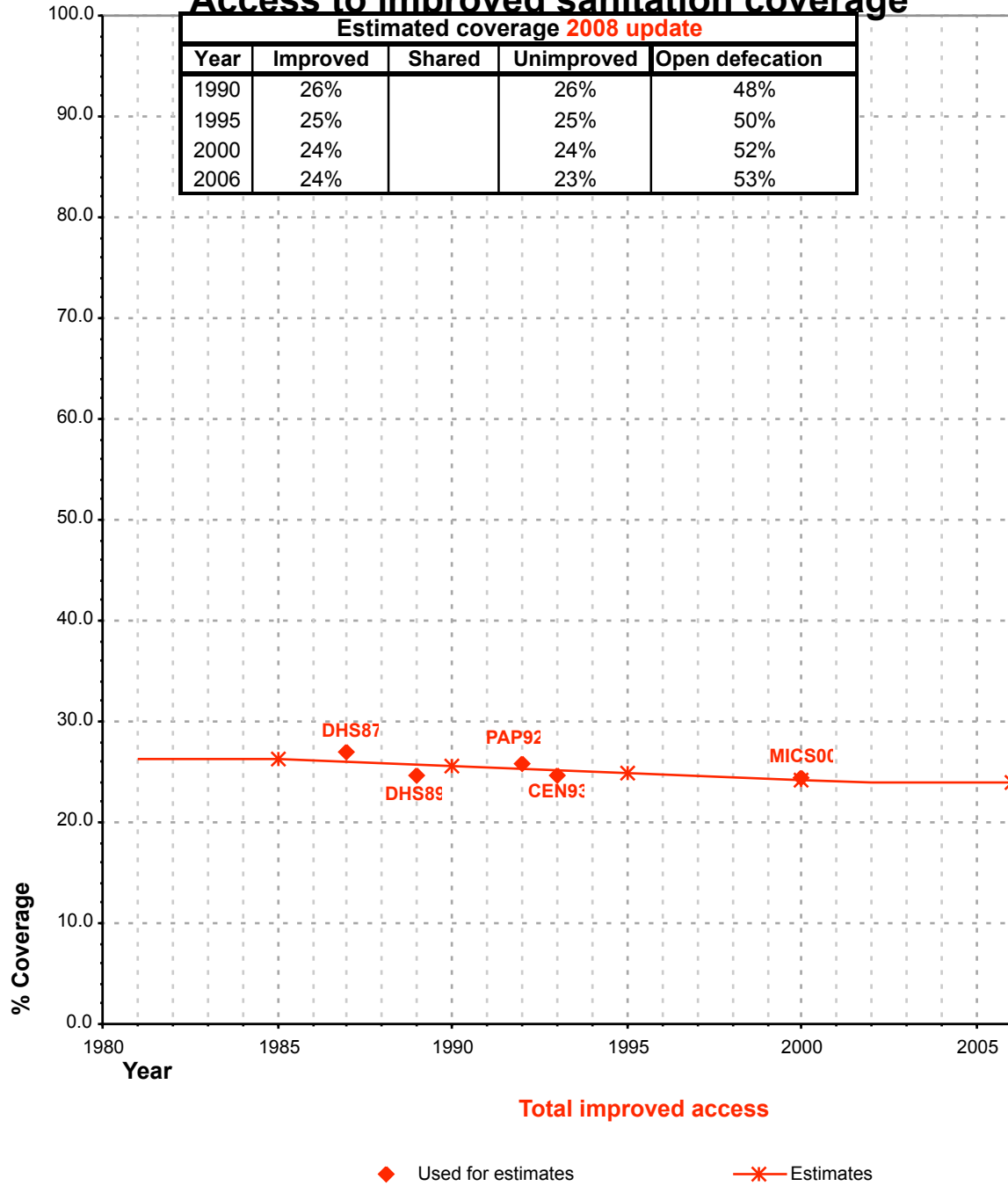
Sudan			SANITATION								OPEN DEFECACTION			
			URBAN				RURAL							
			HC		Total		HC		Total		Urban		Rural	
Source	Code	Year	Used for estimates	Not used for estimates	Used for estimates	Not used for estimates	Used for estimates	Not used for estimates	Used for estimates	Not used for estimates	Used for estimates	Not used for estimates	Used for estimates	Not used for estimates
The International Drinking Water Supply and Sanitation Decade. Review of National Progress (as at December 1983). WHO 1986.	WHO83	1983		3.0		73.0								
Sudanese Demographic and Health Survey 1987.	DHS87	1987	6.4		52.7		0.1		26.9			9.1		45.2
Sudanese Demographic and Health Survey 1989.	DHS89	1989	6.2		51.5		0.1		24.7			11.1		49.8
Sudanese PAPCHILD Survey 1992/93.	PAP92	1992	8.4		56.0		0.7		25.8			6.4		48.2
National Census, Sudan, 1993.	CEN93	1993	6.0		50.7		0.1		24.8			Discrepancies in census totals		
Water Supply and Sanitation Sector Monitoring Report - 1996. Sector Status as of 31 December 1994. WHO/UNICEF 1996.	JMP96	1993				79.0				4.0				
Global Water Supply and Sanitation Assessment 2000. Water Supply and Sanitation Sector Questionnaire - 1999. (Form 6 sent to WHO)	JMP99	1999		3.3		97.0		0.0		51.0				
MICS, 2000 North Sudan	MICS00	2000	0.2		50.2		0.1		24.5			14.6		51.9

Sudan - urban - Access to improved sanitation coverage



Total access :
Sewerage connections :

Sudan - rural - Access to improved sanitation coverage



Total access : Sewerage connections :
--