

WHO / UNICEF

Joint Monitoring Programme
for Water Supply and Sanitation

Estimates for the use of

**Improved Drinking-Water Sources
and Improved Sanitation Facilities**

Updated March 2010

childinfo.org

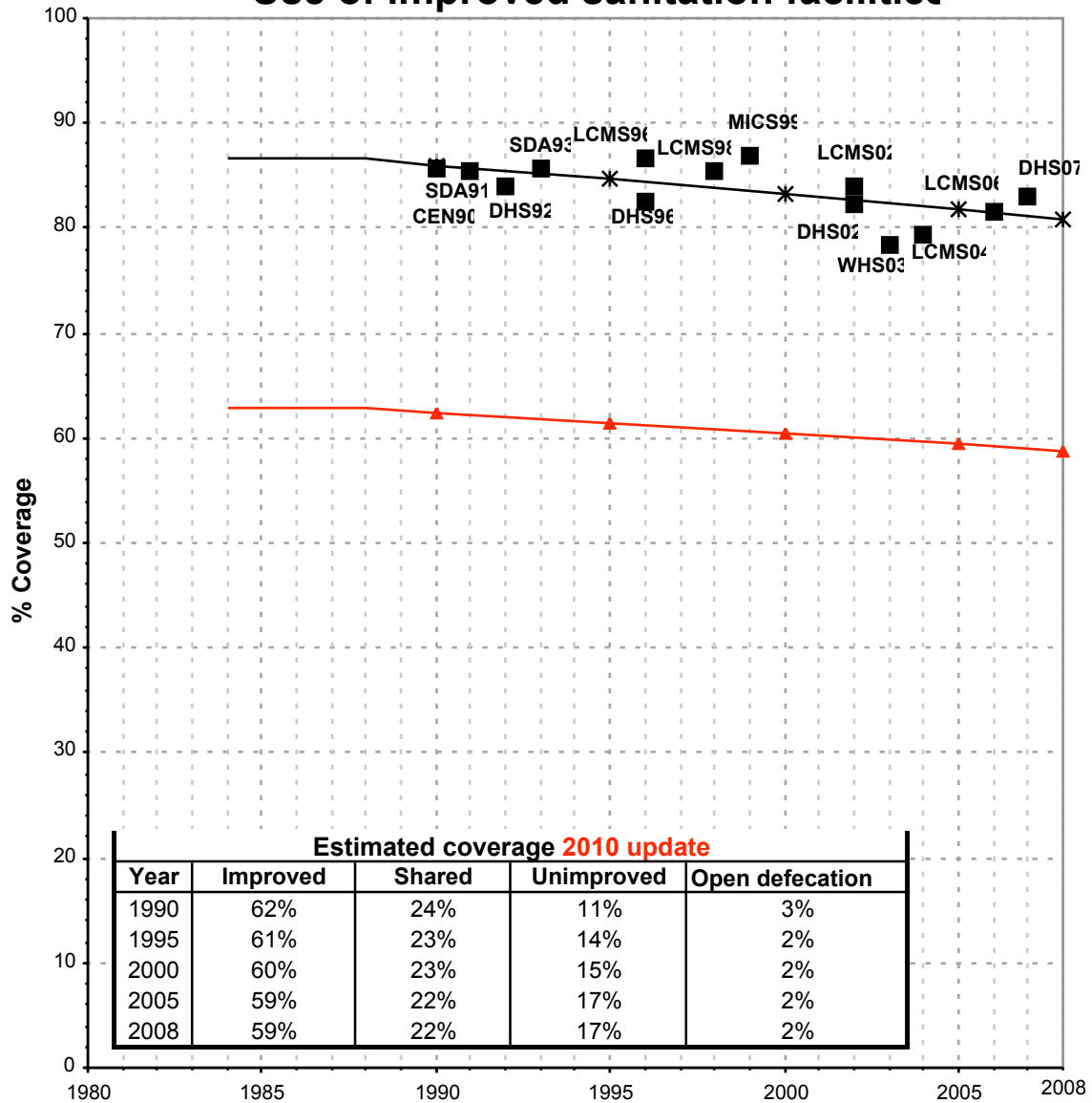
| Use of sanitation facilities | | DHS96 | | | Zambia | | | Use of sanitation facilities | | MICS99 | | | Zambia | | |
|--|---|-------|-------|-------|--|---|-------|-----------------------------------|-------|--------|--|--|--------|--|--|
| Demographic and Health Survey | | | | | 1996 | | | Multiple Indicator Cluster Survey | | | | | 1999 | | |
| Original denomination | Classification | Urban | Rural | Total | Original denomination | Classification | Urban | Rural | Total | | | | | | |
| | Flush and pour flush | 45.6 | 1.2 | | | Flush and pour flush | 44.3 | 1.9 | | | | | | | |
| | to piped sewer system | | | | | to piped sewer system | | | | | | | | | |
| | to septic tank | | | | | to septic tank | | | | | | | | | |
| | to pit | | | | | to pit | | | | | | | | | |
| | to unknown place/ not sure/DK | | | | | to unknown place/ not sure/DK | | | | | | | | | |
| | to elsewhere | | | | | to elsewhere | | | | | | | | | |
| | Flush/toilets | 45.6 | 1.2 | | Flush to sewer system/ septic tank | Flush/toilets | 38.5 | 1.8 | | | | | | | |
| | to piped sewer system | | | | | to piped sewer system | | | | | | | | | |
| | to septic tank | | | | | to septic tank | | | | | | | | | |
| | to pit | | | | | to pit | | | | | | | | | |
| | to unknown place/ not sure/DK | | | | | to unknown place/ not sure/DK | | | | | | | | | |
| | to elsewhere | | | | | to elsewhere | | | | | | | | | |
| Own flush toilet | Private flush/toilet | 41.2 | 1.0 | | | Private flush/toilet | | | | | | | | | |
| | to piped sewer system | | | | | to piped sewer system | | | | | | | | | |
| | to septic tank | | | | | to septic tank | | | | | | | | | |
| | to pit | | | | | to pit | | | | | | | | | |
| | to unknown place/ not sure/DK | | | | | to unknown place/ not sure/DK | | | | | | | | | |
| | to elsewhere | | | | | to elsewhere | | | | | | | | | |
| Shared flush toilet | Public/shared flush/toilet | 4.4 | 0.2 | | | Public/shared flush/toilet | | | | | | | | | |
| | to piped sewer system | | | | | to piped sewer system | | | | | | | | | |
| | to septic tank | | | | | to septic tank | | | | | | | | | |
| | to pit | | | | | to pit | | | | | | | | | |
| | to unknown place/ not sure/DK | | | | | to unknown place/ not sure/DK | | | | | | | | | |
| | to elsewhere | | | | | to elsewhere | | | | | | | | | |
| | Latrines | 48.9 | 55.4 | | | Latrines | 62.3 | 64.5 | | | | | | | |
| | Pour flush latrines | | | | Pour flush latrine (water seal type) | Pour flush latrines | 5.8 | 0.1 | | | | | | | |
| | to piped sewer system | | | | | to piped sewer system | | | | | | | | | |
| | to septic tank | | | | | to septic tank | | | | | | | | | |
| | to pit | | | | | to pit | | | | | | | | | |
| | to unknown place/ not sure/DK | | | | | to unknown place/ not sure/DK | | | | | | | | | |
| | to elsewhere | | | | | to elsewhere | | | | | | | | | |
| | Private pour flush latrine | | | | | Private pour flush latrine | | | | | | | | | |
| | to piped sewer system | | | | | to piped sewer system | | | | | | | | | |
| | to septic tank | | | | | to septic tank | | | | | | | | | |
| | to pit | | | | | to pit | | | | | | | | | |
| | to unknown place/ not sure/DK | | | | | to unknown place/ not sure/DK | | | | | | | | | |
| | to elsewhere | | | | | to elsewhere | | | | | | | | | |
| | Public/shared pour flush latrine | | | | | Public/shared pour flush latrine | | | | | | | | | |
| | to piped sewer system | | | | | to piped sewer system | | | | | | | | | |
| | to septic tank | | | | | to septic tank | | | | | | | | | |
| | to pit | | | | | to pit | | | | | | | | | |
| | to unknown place/ not sure/DK | | | | | to unknown place/ not sure/DK | | | | | | | | | |
| | to elsewhere | | | | | to elsewhere | | | | | | | | | |
| | Dry latrines | 48.9 | 55.4 | | | Dry latrines | 54.5 | 64.4 | | | | | | | |
| | Improved latrines | 0.3 | 0.4 | | Improved pit latrine (eg. VIP) | Improved latrines | 6.0 | 2.5 | | | | | | | |
| Ventilated Improved Pit latrine | Ventilated Improved Pit latrine | 0.3 | 0.4 | | | Ventilated Improved Pit latrine | 6.0 | 2.5 | | | | | | | |
| | Pit latrine with slab/covered latrine | | | | | Pit latrine with slab/covered latrine | | | | | | | | | |
| Traditional pit toilet* | Traditional latrine | 48.6 | 55.0 | | Traditional pit latrine * | Traditional latrine | 46.4 | 61.6 | | | | | | | |
| | Pit latrine without slab/open pit | | | | | Pit latrine without slab/open pit | | | | | | | | | |
| | Hanging toilet/hanging latrine | | | | | Hanging toilet/hanging latrine | | | | | | | | | |
| | Bucket latrine | | | | Bucket | Bucket latrine | 0.1 | 0.3 | | | | | | | |
| | Other | | | | | Other | | | | | | | | | |
| | Private Latrines | | | | | Private Latrines | | | | | | | | | |
| | Ventilated Improved Pit latrine | | | | | Ventilated Improved Pit latrine | | | | | | | | | |
| | Pit latrine with slab/covered latrine | | | | | Pit latrine with slab/covered latrine | | | | | | | | | |
| | Traditional latrine | | | | | Traditional latrine | | | | | | | | | |
| | Pit latrine without slab/open pit | | | | | Pit latrine without slab/open pit | | | | | | | | | |
| | Hanging toilet/hanging latrine | | | | | Hanging toilet/hanging latrine | | | | | | | | | |
| | Bucket latrine | | | | | Bucket latrine | | | | | | | | | |
| | Other | | | | | Other | | | | | | | | | |
| | Public/shared Latrines | | | | | Public/shared Latrines | | | | | | | | | |
| | Ventilated Improved Pit latrine | | | | | Ventilated Improved Pit latrine | | | | | | | | | |
| | Pit latrine with slab/covered latrine | | | | | Pit latrine with slab/covered latrine | | | | | | | | | |
| | Traditional latrine | | | | | Traditional latrine | | | | | | | | | |
| | Pit latrine without slab/open pit | | | | | Pit latrine without slab/open pit | | | | | | | | | |
| | Hanging toilet/hanging latrine | | | | | Hanging toilet/hanging latrine | | | | | | | | | |
| | Bucket latrine | | | | | Bucket latrine | | | | | | | | | |
| | Other | | | | | Other | | | | | | | | | |
| | Composting toilets | | | | | Composting toilets | | | | | | | | | |
| | Composting toilet (private) | | | | | Composting toilet (private) | | | | | | | | | |
| | Composting toilet (shared) | | | | | Composting toilet (shared) | | | | | | | | | |
| | Other improved | | | | Aqua privy | Other improved | 0.1 | 0.1 | | | | | | | |
| | Other | | | | | Other | | | | | | | | | |
| No facility/ bush | No facility, bush, field | 4.8 | 42.9 | | Non/ bush/ field | No facility, bush, field | 1.2 | 33.5 | | | | | | | |
| | Other unimproved | 0.3 | 0.1 | | | Other unimproved | | | | | | | | | |
| | Other | 0.3 | 0.1 | | | Other | | | | | | | | | |
| | Other | | | | | Other | | | | | | | | | |
| Missing information | DK/missing information | 0.4 | 0.4 | | | DK/missing information | | | | | | | | | |
| | Total | 100.0 | 100.0 | | | Total | 100.1 | 99.9 | | | | | | | |
| Calculations | | | | | Calculations | | | | | | | | | | |
| | Traditional pit toilets considered to be improved, based on WHS03 and DHS06 | 36.5 | 41.3 | | | Traditional pit toilets considered to be improved, based on WHS03 and DHS06 | 36.4 | 46.3 | | | | | | | |
| Estimations | | | | | Estimations | | | | | | | | | | |
| | SC, based on ratio from WHS03 | 38.8 | 0.8 | | | SC, based on ratio from WHS03 | 37.7 | 1.3 | | | | | | | |
| Access to improved sanitation : 82% 43% | | | | | Access to improved sanitation : 87% 51% | | | | | | | | | | |
| Access to sewerage connections : 39% 1% | | | | | Access to sewerage connections : 38% 1% | | | | | | | | | | |
| Used for the estimates: Yes Yes | | | | | Used for the estimates: Yes Yes | | | | | | | | | | |
| Used for the estimates: Yes Yes | | | | | Used for the estimates: Yes Yes | | | | | | | | | | |
| Ratios | Shared improved facilities/all improved facilities | 1% | 1% | | Ratios | Shared improved facilities/all improved facilities | 20% | 4% | | | | | | | |
| | Improved latrine / All latrines | | | | | Improved latrine / All latrines | | | | | | | | | |
| | Covered dry latrines / All dry latrines | | | | | Covered dry latrines / All dry latrines | | | | | | | | | |
| | VIP / All latrines | 1% | 1% | | | VIP / All latrines | 11% | 4% | | | | | | | |
| | Traditional latrines / All latrines | 99% | 99% | | | Traditional latrines / All latrines | 80% | 96% | | | | | | | |
| | Improved + traditional latrines / All latrines | 100% | 100% | | | Improved + traditional latrines / All latrines | 100% | 100% | | | | | | | |
| | Sewerage connection among flush/pour flush | | | | | Sewerage connection among flush/pour flush | | | | | | | | | |
| | Sewerage connection among flush | | | | | Sewerage connection among flush | | | | | | | | | |
| | Number of people covered by the survey: | | | | | Number of people covered by the survey: | | | | | | | | | |
| | Number of households covered by the survey: | | | | | Number of households covered by the survey: | | | | | | | | | |
| | Total population: | | | | | Total population: | | | | | | | | | |
| Comments | | | | | Comments | | | | | | | | | | |

| Use of sanitation facilities | | | | JMP99 | | | Zambia | | | Use of sanitation facilities | | | | DHS02 | | | Zambia | | | |
|--|--|--|--|-------|------------|------------|-------------------------------|---------------------------------------|--|---|--|--|------------|------------|-------|--|--------|--|--|--|
| Global Water Supply and Sanitation Assessment 2000. | | | | | | | Demographic and Health Survey | | | | | | | | | | | | | |
| Water Supply and Sanitation Sector Questionnaire - 1999. Form 6 sent to WHO. | | | | | | | 1999 | | | | | | | 2002 | | | | | | |
| Original denomination | | Classification | | | Urban | Rural | Total | Original denomination | | Classification | | | Urban | Rural | Total | | | | | |
| Population served with household connections to conventional | | Flush and pour flush | | | 76.0 | 53.0 | 0.0 | | | Flush and pour flush | | | 42.3 | 1.9 | | | | | | |
| | | to piped sewer system | | | 76.0 | 53.0 | | | | to piped sewer system | | | | | | | | | | |
| | | to septic tank | | | | | | | | to septic tank | | | | | | | | | | |
| | | to pit | | | | | | | | to pit | | | | | | | | | | |
| | | to unknown place/ not sure/DK | | | | | | | | to unknown place/ not sure/DK | | | | | | | | | | |
| | | to elsewhere | | | | | | | | to elsewhere | | | | | | | | | | |
| | | Flush/toilets | | | | | | Flush toilet | | Flush/toilets | | | 42.3 | 1.9 | | | | | | |
| | | to piped sewer system | | | | | | | | to piped sewer system | | | | | | | | | | |
| | | to septic tank | | | | | | | | to septic tank | | | | | | | | | | |
| | | to pit | | | | | | | | to pit | | | | | | | | | | |
| | | to unknown place/ not sure/DK | | | | | | | | to unknown place/ not sure/DK | | | | | | | | | | |
| | | to elsewhere | | | | | | | | to elsewhere | | | | | | | | | | |
| | | Private flush/toilet | | | | | | | | Private flush/toilet | | | | | | | | | | |
| | | to piped sewer system | | | | | | | | to piped sewer system | | | | | | | | | | |
| | | to septic tank | | | | | | | | to septic tank | | | | | | | | | | |
| | | to pit | | | | | | | | to pit | | | | | | | | | | |
| | | to unknown place/ not sure/DK | | | | | | | | to unknown place/ not sure/DK | | | | | | | | | | |
| | | to elsewhere | | | | | | | | to elsewhere | | | | | | | | | | |
| | | Public/shared flush/toilet | | | | | | | | Public/shared flush/toilet | | | | | | | | | | |
| | | to piped sewer system | | | | | | | | to piped sewer system | | | | | | | | | | |
| | | to septic tank | | | | | | | | to septic tank | | | | | | | | | | |
| | | to pit | | | | | | | | to pit | | | | | | | | | | |
| | | to unknown place/ not sure/DK | | | | | | | | to unknown place/ not sure/DK | | | | | | | | | | |
| | | to elsewhere | | | | | | | | to elsewhere | | | | | | | | | | |
| | | Latrines | | | | | | | | Latrines | | | 52.4 | 55.6 | | | | | | |
| | | Pour flush latrines | | | | | | | | Pour flush latrines | | | | | | | | | | |
| | | to piped sewer system | | | | | | | | to piped sewer system | | | | | | | | | | |
| | | to septic tank | | | | | | | | to septic tank | | | | | | | | | | |
| | | to pit | | | | | | | | to pit | | | | | | | | | | |
| | | to unknown place/ not sure/DK | | | | | | | | to unknown place/ not sure/DK | | | | | | | | | | |
| | | to elsewhere | | | | | | | | to elsewhere | | | | | | | | | | |
| | | Private pour flush latrine | | | | | | | | Private pour flush latrine | | | | | | | | | | |
| | | to piped sewer system | | | | | | | | to piped sewer system | | | | | | | | | | |
| | | to septic tank | | | | | | | | to septic tank | | | | | | | | | | |
| | | to pit | | | | | | | | to pit | | | | | | | | | | |
| | | to unknown place/ not sure/DK | | | | | | | | to unknown place/ not sure/DK | | | | | | | | | | |
| | | to elsewhere | | | | | | | | to elsewhere | | | | | | | | | | |
| | | Public/shared pour flush latrine | | | | | | | | Public/shared pour flush latrine | | | | | | | | | | |
| | | to piped sewer system | | | | | | | | to piped sewer system | | | | | | | | | | |
| | | to septic tank | | | | | | | | to septic tank | | | | | | | | | | |
| | | to pit | | | | | | | | to pit | | | | | | | | | | |
| | | to unknown place/ not sure/DK | | | | | | | | to unknown place/ not sure/DK | | | | | | | | | | |
| | | to elsewhere | | | | | | | | to elsewhere | | | | | | | | | | |
| | | Dry latrines | | | | | | | | Dry latrines | | | 52.4 | 55.6 | | | | | | |
| | | Improved latrines | | | | | | Vented Improved Pit latrine | | Improved latrines | | | 2.5 | 1.0 | | | | | | |
| | | Vented Improved Pit latrine | | | | | | Vented Improved Pit latrine | | Vented Improved Pit latrine | | | 2.5 | 1.0 | | | | | | |
| | | Pit latrine with slab/covered latrine | | | | | | Traditional pit latrine | | Pit latrine with slab/covered latrine | | | 49.9 | 54.6 | | | | | | |
| | | Traditional latrine | | | | | | Traditional latrine | | Traditional latrine | | | | | | | | | | |
| | | Pit latrine without slab/open pit | | | | | | Pit latrine without slab/open pit | | Pit latrine without slab/open pit | | | | | | | | | | |
| | | Hanging toilet/hanging latrine | | | | | | Hanging toilet/hanging latrine | | Hanging toilet/hanging latrine | | | | | | | | | | |
| | | Bucket latrine | | | | | | Bucket latrine | | Bucket latrine | | | | | | | | | | |
| | | Other | | | | | | Other | | Other | | | | | | | | | | |
| | | Private Latrines | | | | | | | | Private Latrines | | | | | | | | | | |
| | | Vented Improved Pit latrine | | | | | | Vented Improved Pit latrine | | Vented Improved Pit latrine | | | | | | | | | | |
| | | Pit latrine with slab/covered latrine | | | | | | Pit latrine with slab/covered latrine | | Pit latrine with slab/covered latrine | | | | | | | | | | |
| | | Traditional latrine | | | | | | Traditional latrine | | Traditional latrine | | | | | | | | | | |
| | | Pit latrine without slab/open pit | | | | | | Pit latrine without slab/open pit | | Pit latrine without slab/open pit | | | | | | | | | | |
| | | Hanging toilet/hanging latrine | | | | | | Hanging toilet/hanging latrine | | Hanging toilet/hanging latrine | | | | | | | | | | |
| | | Bucket latrine | | | | | | Bucket latrine | | Bucket latrine | | | | | | | | | | |
| | | Other | | | | | | Other | | Other | | | | | | | | | | |
| | | Public/shared Latrines | | | | | | | | Public/shared Latrines | | | | | | | | | | |
| | | Vented Improved Pit latrine | | | | | | Vented Improved Pit latrine | | Vented Improved Pit latrine | | | | | | | | | | |
| | | Pit latrine with slab/covered latrine | | | | | | Pit latrine with slab/covered latrine | | Pit latrine with slab/covered latrine | | | | | | | | | | |
| | | Traditional latrine | | | | | | Traditional latrine | | Traditional latrine | | | | | | | | | | |
| | | Pit latrine without slab/open pit | | | | | | Pit latrine without slab/open pit | | Pit latrine without slab/open pit | | | | | | | | | | |
| | | Hanging toilet/hanging latrine | | | | | | Hanging toilet/hanging latrine | | Hanging toilet/hanging latrine | | | | | | | | | | |
| | | Bucket latrine | | | | | | Bucket latrine | | Bucket latrine | | | | | | | | | | |
| | | Other | | | | | | Other | | Other | | | | | | | | | | |
| | | Composting toilets | | | | | | | | Composting toilets | | | | | | | | | | |
| | | Composting toilet (private) | | | | | | Composting toilet (private) | | Composting toilet (private) | | | | | | | | | | |
| | | Composting toilet (shared) | | | | | | Composting toilet (shared) | | Composting toilet (shared) | | | | | | | | | | |
| Population without household connections but served | | Other improved | | | 23.0 | 11.0 | | | | Other improved | | | | | | | | | | |
| | | Other | | | | | | | | Other | | | | | | | | | | |
| | | Other | | | | | | | | Other | | | | | | | | | | |
| | | No facility, bush, field | | | | | | No facility/ bush | | No facility, bush, field | | | 4.9 | 42.5 | | | | | | |
| Total population unserved | | Other unimproved | | | 1.0 | 36.0 | | Other | | Other unimproved | | | 0.1 | 0.0 | | | | | | |
| | | Other | | | | | | Other | | Other | | | 0.1 | 0.0 | | | | | | |
| | | Other | | | | | | Other | | Other | | | | | | | | | | |
| | | DK/missing information | | | | | | Missing information | | DK/missing information | | | 0.3 | 0.0 | | | | | | |
| | | Total | | | 100.0 | 100.0 | | | | Total | | | 100.0 | 100.0 | | | | | | |
| Calculations | | | | | | | | Calculations | | | | | | | | | | | | |
| Estimations | | | | | | | | Estimations | | Traditional pit toilets considered to be improved, based on WHS03 and DHS06 | | | 37.5 | 41.0 | | | | | | |
| | | | | | | | | | | | | | | | | | | | | |
| | | | | | | | | | | | | | | | | | | | | |
| | | | | | | | | | | SC, based on ratio from WHS03 | | | 36.0 | 1.3 | | | | | | |
| | | Access to improved plus shared sanitation: | | | 99% | 64% | | | | Access to improved sanitation: | | | 82% | 44% | | | | | | |
| | | Access to sewerage connections: | | | 76% | 53% | | | | Access to sewerage connections: | | | 36% | 1% | | | | | | |
| | | Used for the estimates: | | | No | No | | | | Used for the estimates: | | | Yes | Yes | | | | | | |
| | | Used for the estimates: | | | No | No | | | | Used for the estimates: | | | Yes | Yes | | | | | | |
| Ratios | | Shared improved facilities/all improved facilities | | | | | | Ratios | | Shared improved facilities/all improved facilities | | | 35.6% | 31.6% | | | | | | |
| | | Improved latrine / All latrines | | | | | | | | Improved latrine / All latrines | | | 5% | 2% | | | | | | |
| | | Covered dry latrines / All dry latrines | | | | | | | | Covered dry latrines / All dry latrines | | | 5% | 2% | | | | | | |
| | | VIP / All latrines | | | | | | | | VIP / All latrines | | | 95% | 98% | | | | | | |
| | | Traditional latrines / All latrines | | | | | | | | Traditional latrines / All latrines | | | 100% | 100% | | | | | | |
| | | Improved + traditional latrines / All latrines | | | | | | | | Improved + traditional latrines / All latrines | | | | | | | | | | |
| | | Sewerage connection among flush/pour flush | | | | | | | | Sewerage connection among flush/pour flush | | | | | | | | | | |
| | | Sewerage connection among flush | | | | | | | | Sewerage connection among flush | | | | | | | | | | |
| | | Number of people covered by the survey: | | | | | | | | Number of people covered by the survey: | | | | | | | | | | |
| | | Number of households covered by the survey: | | | | | | | | Number of households covered by the survey: | | | | | | | | | | |
| | | Total population: | | | 3521 | 5995 | | | | Total population: | | | | | | | | | | |
| Comments | | | | | | | | Comments | | | | | | | | | | | | |

| Use of sanitation facilities | | LCMS02 | | | Zambia | | | World Health Survey | | WHS03 | | | Zambia | | |
|-------------------------------------|---|------------|------------|-------|---|---|------------|---------------------|-------|-------|--|--|--------|--|--|
| Living Conditions Monitoring Survey | | | | | 2002 | | | World Health Survey | | | | | 2003 | | |
| Original denomination | Classification | Urban | Rural | Total | Original denomination | Classification | Urban | Rural | Total | | | | | | |
| | Flush and pour flush | 41.0 | 1.0 | | | Flush and pour flush | 38.0 | 2.4 | | | | | | | |
| | to piped sewer system | | | | | to piped sewer system | 30.7 | 1.7 | | | | | | | |
| | to septic tank | | | | | to septic tank | 3.5 | 0.5 | | | | | | | |
| | to pit | | | | | to pit | | | | | | | | | |
| | to unknown place/ not sure/DK | | | | | to unknown place/ not sure/DK | | | | | | | | | |
| | to elsewhere | | | | | to elsewhere | | | | | | | | | |
| | Flush/toilets | 41.0 | 1.0 | | | Flush/toilets | 34.2 | 2.2 | | | | | | | |
| | to piped sewer system | | | | | to piped sewer system | 30.7 | 1.7 | | | | | | | |
| | to septic tank | | | | | to septic tank | 3.5 | 0.5 | | | | | | | |
| | to pit | | | | | to pit | | | | | | | | | |
| | to unknown place/ not sure/DK | | | | | to unknown place/ not sure/DK | | | | | | | | | |
| | to elsewhere | | | | | to elsewhere | | | | | | | | | |
| Own flush toilet | Private flush/toilet | 38.0 | 1.0 | | | Private flush/toilet | 28.2 | 2.1 | | | | | | | |
| | to piped sewer system | | | | Private domestic connection to sewage system | to piped sewer system | 26.1 | 1.7 | | | | | | | |
| | to septic tank | | | | Private flush to septic tank | to septic tank | 2.1 | 0.5 | | | | | | | |
| | to pit | | | | | to pit | | | | | | | | | |
| | to unknown place/ not sure/DK | | | | | to unknown place/ not sure/DK | | | | | | | | | |
| | to elsewhere | | | | | to elsewhere | | | | | | | | | |
| Communal shared flush toilet | Public/shared flush/toilet | 3.0 | 0.0 | | | Public/shared flush/toilet | 6.0 | 0.0 | | | | | | | |
| | to piped sewer system | | | | Shared domestic connection to sewage system | to piped sewer system | 4.6 | 0.0 | | | | | | | |
| | to septic tank | | | | Shared flush to septic tank | to septic tank | 1.4 | 0.0 | | | | | | | |
| | to pit | | | | | to pit | | | | | | | | | |
| | to unknown place/ not sure/DK | | | | | to unknown place/ not sure/DK | | | | | | | | | |
| | to elsewhere | | | | | to elsewhere | | | | | | | | | |
| | Latrines | 56.0 | 65.0 | | | Latrines | 62.9 | 64.1 | | | | | | | |
| | Pour flush latrines | | | | | Pour flush latrines | 1.6 | 0.3 | | | | | | | |
| | to piped sewer system | | | | | to piped sewer system | | | | | | | | | |
| | to septic tank | | | | | to septic tank | | | | | | | | | |
| | to pit | | | | | to pit | | | | | | | | | |
| | to unknown place/ not sure/DK | | | | | to unknown place/ not sure/DK | | | | | | | | | |
| | to elsewhere | | | | | to elsewhere | | | | | | | | | |
| | Private pour flush latrine | | | | Private pour flush latrine | Private pour flush latrine | 1.2 | 0.3 | | | | | | | |
| | to piped sewer system | | | | | to piped sewer system | | | | | | | | | |
| | to septic tank | | | | | to septic tank | | | | | | | | | |
| | to pit | | | | | to pit | | | | | | | | | |
| | to unknown place/ not sure/DK | | | | | to unknown place/ not sure/DK | | | | | | | | | |
| | to elsewhere | | | | | to elsewhere | | | | | | | | | |
| | Public/shared pour flush latrine | | | | Shared pour flush latrine | Public/shared pour flush latrine | 0.6 | 0.0 | | | | | | | |
| | to piped sewer system | | | | | to piped sewer system | | | | | | | | | |
| | to septic tank | | | | | to septic tank | | | | | | | | | |
| | to pit | | | | | to pit | | | | | | | | | |
| | to unknown place/ not sure/DK | | | | | to unknown place/ not sure/DK | | | | | | | | | |
| | to elsewhere | | | | | to elsewhere | | | | | | | | | |
| | Dry latrines | 56.0 | 65.0 | | | Dry latrines | 61.0 | 63.9 | | | | | | | |
| | Improved latrines | | | | | Improved latrines | 57.0 | 56.7 | | | | | | | |
| | Ventilated Improved Pit latrine | | | | | Ventilated Improved Pit latrine | | | | | | | | | |
| | Pit latrine with slab/covered latrine | | | | | Pit latrine with slab/covered latrine | 57.0 | 56.7 | | | | | | | |
| | Traditional latrine | 56.0 | 65.0 | | | Traditional latrine | | | | | | | | | |
| | Pit latrine without slab/open pit | | | | Uncovered dry latrine (without privacy) | Pit latrine without slab/open pit | 3.7 | 7.1 | | | | | | | |
| | Hanging toilet/hanging latrine | | | | | Hanging toilet/hanging latrine | | | | | | | | | |
| | Bucket latrine | | | | Bucket latrine (where fresh excreta are manually removed) | Bucket latrine | 0.4 | 0.0 | | | | | | | |
| | Other | | | | | Other | | | | | | | | | |
| | Private Latrines | 40.0 | 56.0 | | | Private Latrines | 25.3 | 47.9 | | | | | | | |
| | Ventilated Improved Pit latrine | | | | | Ventilated Improved Pit latrine | | | | | | | | | |
| | Pit latrine with slab/covered latrine | | | | Private covered dry latrine (with privacy) | Pit latrine with slab/covered latrine | 25.3 | 47.9 | | | | | | | |
| | Traditional latrine | 40.0 | 56.0 | | | Traditional latrine | | | | | | | | | |
| | Pit latrine without slab/open pit | | | | | Pit latrine without slab/open pit | | | | | | | | | |
| | Hanging toilet/hanging latrine | | | | | Hanging toilet/hanging latrine | | | | | | | | | |
| | Bucket latrine | | | | | Bucket latrine | | | | | | | | | |
| | Other | | | | | Other | | | | | | | | | |
| | Public/shared Latrines | 16.0 | 9.0 | | | Public/shared Latrines | 31.7 | 8.8 | | | | | | | |
| | Ventilated Improved Pit latrine | | | | | Ventilated Improved Pit latrine | | | | | | | | | |
| | Pit latrine with slab/covered latrine | | | | Shared covered dry latrine (with privacy) | Pit latrine with slab/covered latrine | 31.7 | 8.8 | | | | | | | |
| | Traditional latrine | 16.0 | 9.0 | | | Traditional latrine | | | | | | | | | |
| | Pit latrine without slab/open pit | | | | | Pit latrine without slab/open pit | | | | | | | | | |
| | Hanging toilet/hanging latrine | | | | | Hanging toilet/hanging latrine | | | | | | | | | |
| | Bucket latrine | | | | | Bucket latrine | | | | | | | | | |
| | Other | | | | | Other | | | | | | | | | |
| | Composting toilets | | | | | Composting toilets | | | | | | | | | |
| | Composting toilet (private) | | | | | Composting toilet (private) | | | | | | | | | |
| | Composting toilet (shared) | | | | | Composting toilet (shared) | | | | | | | | | |
| | Other improved | 1.0 | 0.0 | | | Other improved | | | | | | | | | |
| | Other | 1.0 | 0.0 | | | Other | | | | | | | | | |
| Auqa Privy | | | | | | | | | | | | | | | |
| None | No facility, bush, field | 1.0 | 33.0 | | No facilities (open defecation) | No facility, bush, field | 2.7 | 30.8 | | | | | | | |
| | Other unimproved | 0.0 | 1.0 | | | Other unimproved | 0.3 | 2.9 | | | | | | | |
| | Other | 0.0 | 1.0 | | Other | Other | 0.3 | 2.9 | | | | | | | |
| | DK/missing information | | | | | DK/missing information | | | | | | | | | |
| | Total | 99.0 | 100.0 | | | Total | 100.0 | 100.0 | | | | | | | |
| Calculations | | | | | Calculations | | | | | | | | | | |
| | Traditional pit toilets considered to be improved, based on WHS03 and DHS06 | 42.1 | 48.8 | | | Traditional pit toilets considered to be improved, based on WHS03 and DHS06 | 44.2 | 42.8 | | | | | | | |
| Estimations | | | | | Estimations | | | | | | | | | | |
| | SC, based on ratio from WHS03 | 34.9 | 0.7 | | | | | | | | | | | | |
| | Access to improved sanitation : | 84% | 50% | | | Access to improved sanitation : | 78% | 45% | | | | | | | |
| | Access to sewerage connections : | 35% | 1% | | | Access to sewerage connections : | 31% | 2% | | | | | | | |
| | Used for the estimates: | Yes | Yes | | | Used for the estimates: | Yes | Yes | | | | | | | |
| | Used for the estimates: | Yes | Yes | | | Used for the estimates: | Yes | Yes | | | | | | | |
| Ratios | Shared improved facilities/all improved facilities | | | | | Shared improved facilities/all improved facilities | 41.1% | 14.9% | | | | | | | |
| | Improved latrine / All latrines | | | | | Improved latrine / All latrines | 94% | 89% | | | | | | | |
| | Covered dry latrines / All dry latrines | | | | | Covered dry latrines / All dry latrines | 93% | 89% | | | | | | | |
| | VIP / All latrines | | | | | VIP / All latrines | | | | | | | | | |
| | Traditional latrines / All latrines | 100% | 100% | | | Traditional latrines / All latrines | | | | | | | | | |
| | Improved + traditional latrines / All latrines | | | | | Improved + traditional latrines / All latrines | | | | | | | | | |
| | Sewerage connection among flush/pour flush | | | | | Sewerage connection among flush/pour flush | 85.1 | 70.0 | | | | | | | |
| | Sewerage connection among flush | | | | | Sewerage connection among flush | 89.6 | 79.1 | | | | | | | |
| | Number of people covered by the survey: | | | | | Number of people covered by the survey: | | | | | | | | | |
| | Number of households covered by the survey: | | | | | Number of households covered by the survey: | | | | | | | | | |
| | Total population: | | | | | Total population: | | | | | | | | | |
| Comments | | | | | Comments | | | | | | | | | | |

| Zambia | | | SANITATION | | | | | | | | | | | | | | | |
|-----------------------|--------|------|------------------|----------|-------|----------|-----------------|----------|--------|----------|------------------|----------|-------|----------|-----------------|----------|--------|----------|
| | | | URBAN | | | | | | | | RURAL | | | | | | | |
| | | | Sewer connection | | Total | | Open defecation | | Shared | | Sewer connection | | Total | | Open defecation | | Shared | |
| Source | Code | Year | Used | Not used | Used | Not used | Used | Not used | Used | Not used | Used | Not used | Used | Not used | Used | Not used | Used | Not used |
| National Census | CEN90 | 1990 | 48.0 | | 85.6 | | 1.0 | | | | 2.0 | | 47.8 | | 36.0 | | | |
| Demographic and | DHS92 | 1992 | 40.8 | | 83.9 | | 4.3 | | | | 1.2 | | 35.4 | | 53.8 | | | |
| Demographic and | DHS96 | 1996 | 38.8 | | 82.4 | | 4.8 | | | | 0.8 | | 42.9 | | 42.9 | | | |
| Multiple Indicator | MICS99 | 1999 | 37.7 | | 86.8 | | 1.2 | | | | 1.3 | | 50.8 | | 33.5 | | | |
| Global Water | JMP99 | 1999 | | 76.0 | | 99.0 | | | | | 53.0 | | | 64.0 | | | | |
| Demographic and | DHS02 | 2002 | 36.0 | | 82.3 | | 4.9 | | 35.6 | | 1.3 | | 43.9 | | 42.5 | | 31.6 | |
| Living Conditions | LCMS02 | 2002 | 34.9 | | 84.1 | | 1.0 | | | | 0.7 | | 49.8 | | 33.0 | | | |
| World Health | WHS03 | 2003 | 30.7 | | 78.4 | | 2.7 | | 41.1 | | 1.7 | | 45.0 | | 30.8 | | 14.9 | |
| The Social Dimensions | SDA91 | 1991 | | | 85.4 | | | | | | | | 43.7 | | | | | |
| The Social Dimensions | LCMS04 | 2004 | | | 79.4 | | 0.4 | | 16.8 | | | | 52.0 | | 21.2 | | 7.6 | |
| The Social Dimensions | SDA93 | 1993 | | | 85.7 | | 1.8 | | | | | | 47.1 | | 29.7 | | | |
| Living Conditions | LCMS06 | 2006 | | | 81.6 | | 1.0 | | 21.3 | | | | 55.9 | | 18.8 | | 15.7 | |
| Living Cond | LCMS96 | 1996 | | | 86.6 | | 1.3 | | 25.1 | | | | 47.8 | | 35.7 | | 19.4 | |
| Living Cond | LCMS98 | 1998 | | | 85.4 | | 0.8 | | 24.3 | | | | 51.2 | | 29.1 | | 16.2 | |
| Population a | CEN00 | 2000 | | | | | | | | | | | | | | | | |
| Demographi | DHS07 | 2007 | 28.1 | | 83.0 | | 1.8 | | | | 0.4 | | 48.2 | | 35.4 | | | |

Zambia - urban - Use of improved sanitation facilities

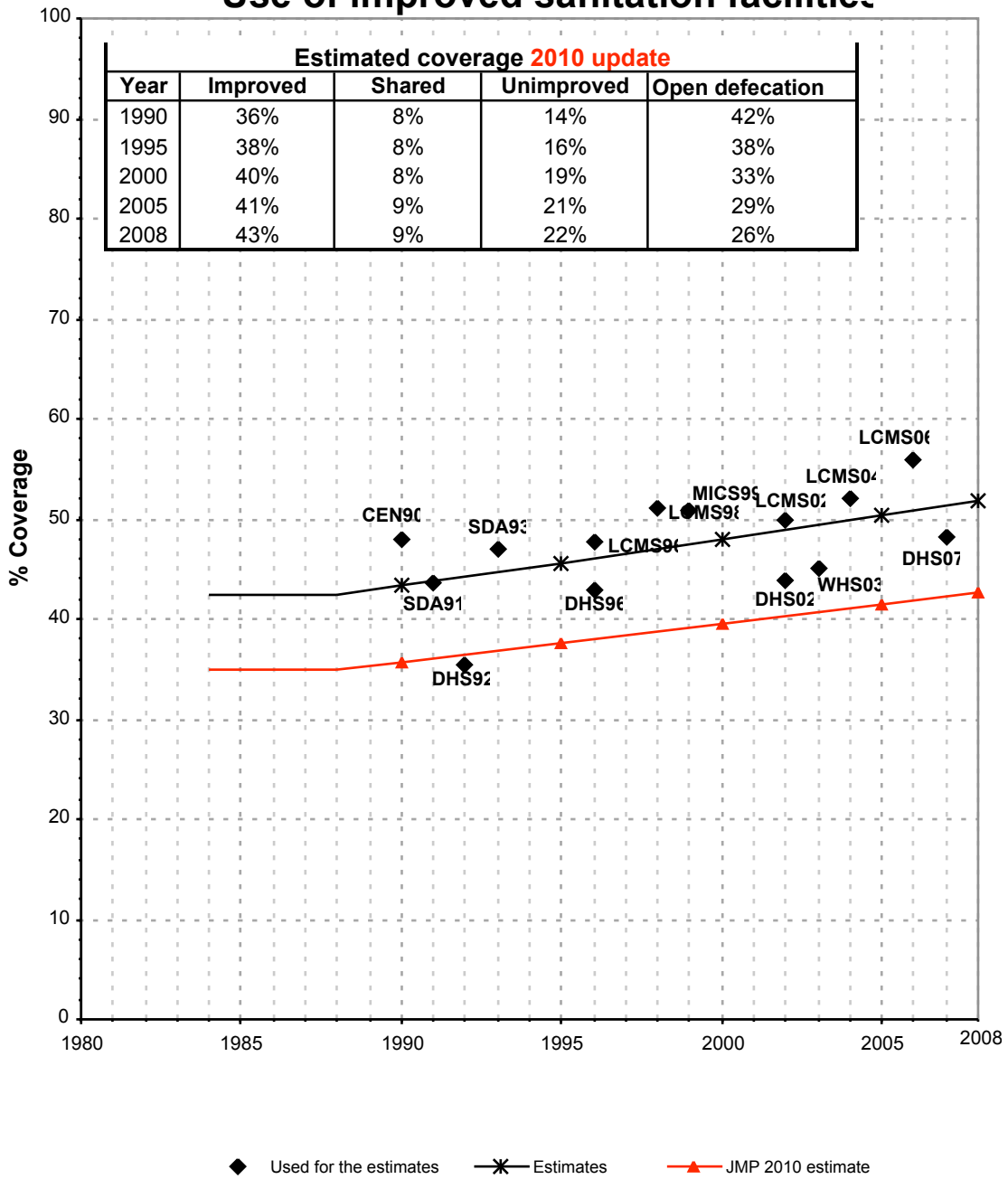


Used for the estimates

*
 Estimates

▲
 JMP 2010 estimate

Zambia - rural - Use of improved sanitation facilities



Sanitation

| Zambia | Sanitation coverage estimates | | | | | |
|-----------------------|-------------------------------|------|-----------|------|-----------|------|
| | Urban (%) | | Rural (%) | | Total (%) | |
| | 1990 | 2008 | 1990 | 2008 | 1990 | 2008 |
| Improved facilities | 62 | 59 | 36 | 43 | 46 | 49 |
| Shared facilities | 24 | 22 | 8 | 9 | 14 | 14 |
| Unimproved facilities | 11 | 17 | 14 | 22 | 13 | 19 |
| Open defecation | 3 | 2 | 42 | 26 | 27 | 18 |

Source: WHO/UNICEF JMP, 2010

| Zambia | Urban | | Rural | | Total | |
|--------------------|-------|-------|-------|-------|-------|--------|
| | 1990 | 2008 | 1990 | 2008 | 1990 | 2008 |
| Population (x1000) | 3,117 | 4,461 | 4,793 | 8,159 | 7,910 | 12,620 |

Source: UN / Population Division, 2008

