

**WHO / UNICEF**

**Joint Monitoring Programme**  
for Water Supply and Sanitation

Estimates for the use of

**Improved Drinking-Water Sources  
and Improved Sanitation Facilities**

Updated March 2010

[childinfo.org](http://childinfo.org)

Use of sanitation facilities		CEN88			Tanzania			Use of sanitation facilities		DHS92			Tanzania		
Census as recorded in the Global Water Supply and Sanitation Assessment 2000. Water Supply and Sanitation Sector Questionnaire - 1999		as recorded in the Global Water Supply and Sanitation Assessment 2000. Water Supply and Sanitation Sector Questionnaire - 1999			1988			Demographic and Health Survey		1992			1992		
Original denomination	Classification	Urban	Rural	Total	Original denomination	Classification	Urban	Rural	Total						
	<b>Flush and pour flush</b>	7.3	5.6			<b>Flush and pour flush</b>	4.1	0.3							
	to piped sewer system					to piped sewer system									
	to septic tank					to septic tank									
	to pit					to pit									
	to unknown place/ not sure/DK					to unknown place/ not sure/DK									
	to elsewhere					to elsewhere									
	<b>Flush/toilets</b>	7.3	5.6			<b>Flush/toilets</b>	4.1	0.3							
	to piped sewer system					to piped sewer system									
	to septic tank					to septic tank									
	to pit					to pit									
	to unknown place/ not sure/DK					to unknown place/ not sure/DK									
	to elsewhere					to elsewhere									
Flush Toilet Inside House	<b>Private flush/toilet</b>	5.1	3.5		Own flush toilet	<b>Private flush/toilet</b>	2.9	0.2							
	to piped sewer system					to piped sewer system									
	to septic tank					to septic tank									
	to pit					to pit									
	to unknown place/ not sure/DK					to unknown place/ not sure/DK									
	to elsewhere					to elsewhere									
Flush Toilet Outside House	<b>Public/shared flush/toilet</b>	2.1	2.1		Shared flush toilet	<b>Public/shared flush/toilet</b>	1.2	0.1							
	to piped sewer system					to piped sewer system									
	to septic tank					to septic tank									
	to pit					to pit									
	to unknown place/ not sure/DK					to unknown place/ not sure/DK									
	to elsewhere					to elsewhere									
	<b>Latrines</b>	91.6	87.4			<b>Latrines</b>	83.2	83.1							
	<b>Pour flush latrines</b>					<b>Pour flush latrines</b>									
	to piped sewer system					to piped sewer system									
	to septic tank					to septic tank									
	to pit					to pit									
	to unknown place/ not sure/DK					to unknown place/ not sure/DK									
	to elsewhere					to elsewhere									
	<b>Private pour flush latrine</b>					<b>Private pour flush latrine</b>									
	to piped sewer system					to piped sewer system									
	to septic tank					to septic tank									
	to pit					to pit									
	to unknown place/ not sure/DK					to unknown place/ not sure/DK									
	to elsewhere					to elsewhere									
	<b>Public/shared pour flush latrine</b>					<b>Public/shared pour flush latrine</b>									
	to piped sewer system					to piped sewer system									
	to septic tank					to septic tank									
	to pit					to pit									
	to unknown place/ not sure/DK					to unknown place/ not sure/DK									
	to elsewhere					to elsewhere									
Pit Latrine	<b>Dry latrines</b>	91.6	87.4			<b>Dry latrines</b>	83.2	83.1							
	<b>Improved latrines</b>					<b>Improved latrines</b>	2.7	0.7							
	Ventilated Improved Pit latrine				Improved pit latrine	Ventilated Improved Pit latrine	2.7	0.7							
	Pit latrine with slab/covered latrine				Traditional pit latrine	Pit latrine with slab/covered latrine	90.5	82.4							
	Traditional latrine					Traditional latrine									
	Pit latrine without slab/open pit					Pit latrine without slab/open pit									
	Hanging toilet/hanging latrine					Hanging toilet/hanging latrine									
	Bucket latrine					Bucket latrine									
	Other					Other									
	<b>Private Latrines</b>					<b>Private Latrines</b>									
	Ventilated Improved Pit latrine					Ventilated Improved Pit latrine									
	Pit latrine with slab/covered latrine					Pit latrine with slab/covered latrine									
	Traditional latrine					Traditional latrine									
	Pit latrine without slab/open pit					Pit latrine without slab/open pit									
	Hanging toilet/hanging latrine					Hanging toilet/hanging latrine									
	Bucket latrine					Bucket latrine									
	Other					Other									
	<b>Public/shared Latrines</b>					<b>Public/shared Latrines</b>									
	Ventilated Improved Pit latrine					Ventilated Improved Pit latrine									
	Pit latrine with slab/covered latrine					Pit latrine with slab/covered latrine									
	Traditional latrine					Traditional latrine									
	Pit latrine without slab/open pit					Pit latrine without slab/open pit									
	Hanging toilet/hanging latrine					Hanging toilet/hanging latrine									
	Bucket latrine					Bucket latrine									
	Other					Other									
	<b>Composting toilets</b>					<b>Composting toilets</b>									
	Composting toilet (private)					Composting toilet (private)									
	Composting toilet (shared)					Composting toilet (shared)									
	<b>Other improved</b>					<b>Other improved</b>									
	Other					Other									
	Other					Other									
No Facilities	<b>No facility, bush, field</b>	6.3	10.6		No facility/ bush	<b>No facility, bush, field</b>	2.0	15.7							
	<b>Other unimproved</b>					<b>Other unimproved</b>									
	Other					Other									
	Other					Other									
	<b>DK/missing information</b>				Missing information	<b>DK/missing information</b>	0.9	0.9							
	<b>Total</b>	105.1	103.5			<b>Total</b>	100.2	100.0							
<b>Calculations</b>					<b>Calculations</b>										
	50% of latrines considered improved	45.8	43.7			50% of traditional latrines considered improved	45.3	41.2							
<b>Estimations</b>					<b>Estimations</b>										
	SC, based on MICS96	3.2	1.4			SC, based on MICS96	1.8	0.1							
<b>Access to improved sanitation :</b>		<b>53%</b>	<b>49%</b>		<b>Access to improved sanitation :</b>		<b>52%</b>	<b>42%</b>							
<b>Access to sewerage connections :</b>		<b>3%</b>	<b>1%</b>		<b>Access to sewerage connections :</b>		<b>2%</b>	<b>0%</b>							
Used for the estimates		Yes	Yes		Used for the estimates		Yes	Yes							
Used for the estimates		Yes	Yes		Used for the estimates		Yes	Yes							
<b>Ratios</b>	Shared improved facilities/all improved facilities				<b>Ratios</b>	Shared improved facilities/all improved facilities									
	Improved latrine / All latrines					Improved latrine / All latrines	3%	1%							
	Covered dry latrines / All dry latrines					Covered dry latrines / All dry latrines									
	VIP / All latrines					VIP / All latrines	3%	1%							
	Traditional latrines / All latrines					Traditional latrines / All latrines	97%	99%							
	Improved + traditional latrines / All latrines					Improved + traditional latrines / All latrines	100%	100%							
Sewerage connection among flush/pour flush					Sewerage connection among flush/pour flush										
Sewerage connection among flush					Sewerage connection among flush										
Number of people covered by the survey:					Number of people covered by the survey:										
Number of households covered by the survey:					Number of households covered by the survey:										
Total population:		4039	18285		Total population:										
<b>Comments</b>					<b>Comments</b>										

Use of sanitation facilities		LSMS93			Tanzania			Use of sanitation facilities		DHS94			Tanzania		
Living Standards Measurement Survey					1993			Demographic and Health Survey					1994		
Original denomination	Classification	Urban	Rural	Total	Original denomination	Classification	Urban	Rural	Total						
FLUSH TOILET	<b>Flush and pour flush</b>	12.0	1.1			<b>Flush and pour flush</b>	4.2	0.2							
	to piped sewer system					to piped sewer system									
	to septic tank					to septic tank									
	to pit					to pit									
	to unknown place/ not sure/DK to elsewhere					to unknown place/ not sure/DK to elsewhere									
FLUSH TOILET	<b>Flush/toilets</b>	12.0	1.1			<b>Flush/toilets</b>	4.2	0.2							
	to piped sewer system					to piped sewer system									
	to septic tank					to septic tank									
	to pit					to pit									
	to unknown place/ not sure/DK to elsewhere					to unknown place/ not sure/DK to elsewhere									
FLUSH TOILET	<b>Private flush/toilet</b>				Own flush toilet	<b>Private flush/toilet</b>	2.5	0.2							
	to piped sewer system					to piped sewer system									
	to septic tank					to septic tank									
	to pit					to pit									
	to unknown place/ not sure/DK to elsewhere					to unknown place/ not sure/DK to elsewhere									
FLUSH TOILET	<b>Public/shared flush/toilet</b>				Shared flush toilet	<b>Public/shared flush/toilet</b>	1.7	0.0							
	to piped sewer system					to piped sewer system									
	to septic tank					to septic tank									
	to pit					to pit									
	to unknown place/ not sure/DK to elsewhere					to unknown place/ not sure/DK to elsewhere									
LATRINES	<b>Latrines</b>	85.7	91.5			<b>Latrines</b>	82.9	87.2							
	<b>Pour flush latrines</b>					<b>Pour flush latrines</b>									
	to piped sewer system					to piped sewer system									
	to septic tank					to septic tank									
	to pit					to pit									
LATRINES	<b>Private pour flush latrine</b>					<b>Private pour flush latrine</b>									
	to piped sewer system					to piped sewer system									
	to septic tank					to septic tank									
	to pit					to pit									
	to unknown place/ not sure/DK to elsewhere					to unknown place/ not sure/DK to elsewhere									
LATRINES	<b>Public/shared pour flush latrine</b>					<b>Public/shared pour flush latrine</b>									
	to piped sewer system					to piped sewer system									
	to septic tank					to septic tank									
	to pit					to pit									
	to unknown place/ not sure/DK to elsewhere					to unknown place/ not sure/DK to elsewhere									
LATRINES	<b>Dry latrines</b>	85.7	91.5			<b>Dry latrines</b>	92.9	87.2							
	<b>Improved latrines</b>				Improved pit latrine	<b>Improved latrines</b>	1.8	0.3							
	Ventilated Improved Pit latrine					Ventilated Improved Pit latrine									
	Pit latrine with slab/covered latrine					Pit latrine with slab/covered latrine									
	Traditional latrine	85.6	91.5		Traditional pit latrine	Traditional latrine	91.1	86.9							
PIT LATRINE	Pit latrine without slab/open pit					Pit latrine without slab/open pit									
	Hanging toilet/hanging latrine					Hanging toilet/hanging latrine									
	Bucket latrine	0.1	0.0			Bucket latrine									
	Other					Other									
	<b>Private Latrines</b>					<b>Private Latrines</b>									
PIT LATRINE	Ventilated Improved Pit latrine					Ventilated Improved Pit latrine									
	Pit latrine with slab/covered latrine					Pit latrine with slab/covered latrine									
	Traditional latrine					Traditional latrine									
	Pit latrine without slab/open pit					Pit latrine without slab/open pit									
	Hanging toilet/hanging latrine					Hanging toilet/hanging latrine									
PAN/BUCKET	Bucket latrine					Bucket latrine									
	Other					Other									
	<b>Public/shared Latrines</b>					<b>Public/shared Latrines</b>									
	Ventilated Improved Pit latrine					Ventilated Improved Pit latrine									
	Pit latrine with slab/covered latrine					Pit latrine with slab/covered latrine									
PIT LATRINE	Traditional latrine					Traditional latrine									
	Pit latrine without slab/open pit					Pit latrine without slab/open pit									
	Hanging toilet/hanging latrine					Hanging toilet/hanging latrine									
	Bucket latrine					Bucket latrine									
	Other					Other									
PIT LATRINE	<b>Composting toilets</b>					<b>Composting toilets</b>									
	Composting toilet (private)					Composting toilet (private)									
	Composting toilet (shared)					Composting toilet (shared)									
	<b>Other improved</b>					<b>Other improved</b>									
	Other					Other									
No toilet	<b>No facility, bush, field</b>	2.1	6.9		No facility/ bush	<b>No facility, bush, field</b>	2.2	11.9							
	<b>Other unimproved</b>					<b>Other unimproved</b>									
	Other					Other									
	Other					Other									
	<b>DK/missing information</b>				Missing information	<b>DK/missing information</b>	0.9	0.7							
Calculations	<b>Total</b>	99.8	99.5			<b>Total</b>	100.2	100.0							
Estimations	50% of traditional latrines considered improved	42.8	45.8			50% of traditional latrines considered improved	45.6	43.5							
	SC, based on MICS96	5.2	0.3			SC, based on MICS96	1.8	0.1							
<b>Access to improved sanitation :</b>		<b>55%</b>	<b>47%</b>		<b>Access to improved sanitation :</b>		<b>52%</b>	<b>44%</b>							
<b>Access to sewerage connections :</b>		<b>5%</b>	<b>0%</b>		<b>Access to sewerage connections :</b>		<b>2%</b>	<b>0%</b>							
Used for the estimates		Yes	Yes		Used for the estimates		Yes	Yes							
Used for the estimates		Yes	Yes		Used for the estimates		Yes	Yes							
Ratios	Shared improved facilities/all improved facilities					Shared improved facilities/all improved facilities									
	Improved latrine / All latrines					Improved latrine / All latrines	2%	0%							
	Covered dry latrines / All dry latrines					Covered dry latrines / All dry latrines									
	VIP / All latrines					VIP / All latrines	2%	0%							
	Traditional latrines / All latrines	100%	100%			Traditional latrines / All latrines	98%	100%							
Ratios	Improved + traditional latrines / All latrines					Improved + traditional latrines / All latrines	100%	100%							
	Sewerage connection among flush/pour flush					Sewerage connection among flush/pour flush									
	Sewerage connection among flush					Sewerage connection among flush									
	Number of people covered by the survey					Number of people covered by the survey									
	Number of households covered by the survey					Number of households covered by the survey									
Total population					Total population										
<b>Comments</b>					<b>Comments</b>										

Use of sanitation facilities		DHS96			Tanzania			Use of sanitation facilities		MICS96			Tanzania		
Demographic and Health Survey					1996			Multiple Indicator Cluster Survey					1996		
Original denomination	Classification	Urban	Rural	Total	Original denomination	Classification	Urban	Rural	Total						
	<b>Flush and pour flush</b>	5.0	0.8			<b>Flush and pour flush</b>	14.2	0.8							
	to piped sewer system					to piped sewer system	6.2	0.2							
	to septic tank					to septic tank	8.0	0.6							
	to pit					to pit									
	to unknown place/ not sure/DK					to unknown place/ not sure/DK									
	to elsewhere					to elsewhere									
	<b>Flush/toilets</b>	5.0	0.8			<b>Flush/toilets</b>	14.2	0.8							
	to piped sewer system					to piped sewer system	6.2	0.2							
	to septic tank					to septic tank	8.0	0.6							
	to pit					to pit									
	to unknown place/ not sure/DK					to unknown place/ not sure/DK									
	to elsewhere					to elsewhere									
Own flush toilet	<b>Private flush/toilet</b>	3.6	0.5			<b>Private flush/toilet</b>	11.9	0.8							
	to piped sewer system				Flush in dwelling to sewage system	to piped sewer system	5.5	0.2							
	to septic tank				Flush in dwelling to septic tank	to septic tank	6.4	0.6							
	to pit					to pit									
	to unknown place/ not sure/DK					to unknown place/ not sure/DK									
	to elsewhere					to elsewhere									
Shared flush toilet	<b>Public/shared flush/toilet</b>	1.4	0.3			<b>Public/shared flush/toilet</b>	2.3	0.0							
	to piped sewer system				Flush outside dwelling to sewage system	to piped sewer system	0.7	0.0							
	to septic tank				Flush outside dwelling to septic tank	to septic tank	1.6	0.0							
	to pit					to pit									
	to unknown place/ not sure/DK					to unknown place/ not sure/DK									
	to elsewhere					to elsewhere									
	<b>Latrines</b>	92.6	82.3			<b>Latrines</b>	84.1	89.1							
	<b>Pour flush latrines</b>					<b>Pour flush latrines</b>									
	to piped sewer system					to piped sewer system									
	to septic tank					to septic tank									
	to pit					to pit									
	to unknown place/ not sure/DK					to unknown place/ not sure/DK									
	to elsewhere					to elsewhere									
	<b>Private pour flush latrine</b>					<b>Private pour flush latrine</b>									
	to piped sewer system					to piped sewer system									
	to septic tank					to septic tank									
	to pit					to pit									
	to unknown place/ not sure/DK					to unknown place/ not sure/DK									
	to elsewhere					to elsewhere									
	<b>Public/shared pour flush latrine</b>					<b>Public/shared pour flush latrine</b>									
	to piped sewer system					to piped sewer system									
	to septic tank					to septic tank									
	to pit					to pit									
	to unknown place/ not sure/DK					to unknown place/ not sure/DK									
	to elsewhere					to elsewhere									
	<b>Dry latrines</b>	92.6	82.3			<b>Dry latrines</b>	84.1	89.1							
	<b>Improved latrines</b>	3.3	0.4			<b>Improved latrines</b>	4.2	1.0							
Ventilated Improved Pit latrine	Ventilated Improved Pit latrine	3.3	0.4		VIP Latrine	Ventilated Improved Pit latrine	4.2	1.0							
	Pit latrine with slab/covered latrine					Pit latrine with slab/covered latrine									
Traditional pit toilet	Traditional latrine	89.3	81.9		Ordinary pit latrine	Traditional latrine	79.5	87.9							
	Pit latrine without slab/open pit					Pit latrine without slab/open pit									
	Hanging toilet/hanging latrine					Hanging toilet/hanging latrine									
	Bucket latrine				Tank, bucket	Bucket latrine	0.4	0.2							
	Other					Other									
	<b>Private Latrines</b>					<b>Private Latrines</b>									
	Ventilated Improved Pit latrine					Ventilated Improved Pit latrine									
	Pit latrine with slab/covered latrine					Pit latrine with slab/covered latrine									
	Traditional latrine					Traditional latrine									
	Pit latrine without slab/open pit					Pit latrine without slab/open pit									
	Hanging toilet/hanging latrine					Hanging toilet/hanging latrine									
	Bucket latrine					Bucket latrine									
	Other					Other									
	<b>Public/shared Latrines</b>					<b>Public/shared Latrines</b>									
	Ventilated Improved Pit latrine					Ventilated Improved Pit latrine									
	Pit latrine with slab/covered latrine					Pit latrine with slab/covered latrine									
	Traditional latrine					Traditional latrine									
	Pit latrine without slab/open pit					Pit latrine without slab/open pit									
	Hanging toilet/hanging latrine					Hanging toilet/hanging latrine									
	Bucket latrine					Bucket latrine									
	Other					Other									
	<b>Composting toilets</b>					<b>Composting toilets</b>									
	Composting toilet (private)					Composting toilet (private)									
	Composting toilet (shared)					Composting toilet (shared)									
	<b>Other improved</b>					<b>Other improved</b>									
	Other					Other									
	Other					Other									
No Facilities/Bush	<b>No facility, bush, field</b>	1.7	16.0		No Facilities, Forest, Coast, etc.	<b>No facility, bush, field</b>	1.6	9.9							
	<b>Other unimproved</b>					<b>Other unimproved</b>	0.1	0.2							
	Other				Other	Other	0.1	0.2							
	Other					Other									
Missing/Unknown	<b>DK/missing information</b>	0.7	0.9			<b>DK/missing information</b>									
	<b>Total</b>	100.0	100.0			<b>Total</b>	100.0	100.0							
<b>Calculations</b>					<b>Calculations</b>										
	50% of traditional latrines considered improved	44.7	41.0			50% of traditional latrines considered improved	39.8	44.0							
<b>Estimations</b>					<b>Estimations</b>										
	SC, based on MICS96	2.2	0.2												
<b>Access to improved sanitation :</b>		<b>53%</b>	<b>42%</b>		<b>Access to improved sanitation :</b>		<b>58%</b>	<b>46%</b>							
<b>Access to sewerage connections :</b>		<b>2%</b>	<b>0%</b>		<b>Access to sewerage connections :</b>		<b>6%</b>	<b>0%</b>							
Used for the estimates		Yes	Yes		Used for the estimates		Yes	Yes							
Used for the estimates		Yes	Yes		Used for the estimates		Yes	Yes							
<b>Ratios</b>	Shared improved facilities/all improved facilities	4%	0%		<b>Ratios</b>	Shared improved facilities/all improved facilities	5%	1%							
	Improved latrine / All latrines					Improved latrine / All latrines									
	Covered dry latrines / All dry latrines	4%	0%			Covered dry latrines / All dry latrines	5%	1%							
	VIP / All latrines	96%	100%			VIP / All latrines	95%	99%							
	Traditional latrines / All latrines	100%	100%			Improved + traditional latrines / All latrines	43.7	25.0							
	Improved + traditional latrines / All latrines	43.7	25.0			Sewerage connection among flush/pour flush	43.7	25.0							
	Sewerage connection among flush	43.7	25.0		Sewerage connection among flush	43.7	25.0								
Number of people covered by the survey:					Number of people covered by the survey:										
Number of households covered by the survey:					Number of households covered by the survey:										
Total population:					Total population:										
<b>Comments</b>					<b>Comments</b>										

Use of sanitation facilities		DHS99			Tanzania			Use of sanitation facilities		JMP99			Tanzania		
Reproductive and Child Health Survey					Global Water Supply and Sanitation Assessment 2000.					Water Supply and Sanitation Sector Questionnaire - 1999. Form 6 sent to WHO.					
					1999					1999					
Original denomination	Classification	Urban	Rural	Total	Original denomination	Classification	Urban	Rural	Total						
	<b>Flush and pour flush</b>	4.1	0.6	1.5		<b>Flush and pour flush</b>	18.5	0.3	0.0						
	to piped sewer system				Population served with household connections to conventional	to piped sewer system	18.5	0.3							
	to septic tank					to septic tank									
	to pit					to pit									
	to unknown place/ not sure/DK					to unknown place/ not sure/DK									
	to elsewhere					to elsewhere									
Flush toilet	<b>Flush/toilets</b>	4.1	0.6	1.5		<b>Flush/toilets</b>									
	to piped sewer system					to piped sewer system									
	to septic tank					to septic tank									
	to pit					to pit									
	to unknown place/ not sure/DK					to unknown place/ not sure/DK									
	to elsewhere					to elsewhere									
	<b>Private flush/toilet</b>					<b>Private flush/toilet</b>									
	to piped sewer system					to piped sewer system									
	to septic tank					to septic tank									
	to pit					to pit									
	to unknown place/ not sure/DK					to unknown place/ not sure/DK									
	to elsewhere					to elsewhere									
	<b>Public/shared flush/toilet</b>					<b>Public/shared flush/toilet</b>									
	to piped sewer system					to piped sewer system									
	to septic tank					to septic tank									
	to pit					to pit									
	to unknown place/ not sure/DK					to unknown place/ not sure/DK									
	to elsewhere					to elsewhere									
	<b>Latrines</b>	94.7	83.6	86.5		<b>Latrines</b>									
	<b>Pour flush latrines</b>					<b>Pour flush latrines</b>									
	to piped sewer system					to piped sewer system									
	to septic tank					to septic tank									
	to pit					to pit									
	to unknown place/ not sure/DK					to unknown place/ not sure/DK									
	to elsewhere					to elsewhere									
	<b>Private pour flush latrine</b>					<b>Private pour flush latrine</b>									
	to piped sewer system					to piped sewer system									
	to septic tank					to septic tank									
	to pit					to pit									
	to unknown place/ not sure/DK					to unknown place/ not sure/DK									
	to elsewhere					to elsewhere									
	<b>Public/shared pour flush latrine</b>					<b>Public/shared pour flush latrine</b>									
	to piped sewer system					to piped sewer system									
	to septic tank					to septic tank									
	to pit					to pit									
	to unknown place/ not sure/DK					to unknown place/ not sure/DK									
	to elsewhere					to elsewhere									
	<b>Dry latrines</b>	94.7	83.6	86.5		<b>Dry latrines</b>									
	<b>Improved latrines</b>	3.2	0.2	1.0		<b>Improved latrines</b>									
Ventilated Improved Pit latrine	Ventilated Improved Pit latrine	3.2	0.2	1.0		Ventilated Improved Pit latrine									
Traditional pit toilet	Pit latrine with slab/covered latrine	91.5	83.4	85.5		Pit latrine with slab/covered latrine									
	Traditional latrine					Traditional latrine									
	Pit latrine without slab/open pit					Pit latrine without slab/open pit									
	Hanging toilet/hanging latrine					Hanging toilet/hanging latrine									
	Bucket latrine					Bucket latrine									
	Other					Other									
	<b>Private Latrines</b>					<b>Private Latrines</b>									
	Ventilated Improved Pit latrine					Ventilated Improved Pit latrine									
	Pit latrine with slab/covered latrine					Pit latrine with slab/covered latrine									
	Traditional latrine					Traditional latrine									
	Pit latrine without slab/open pit					Pit latrine without slab/open pit									
	Hanging toilet/hanging latrine					Hanging toilet/hanging latrine									
	Bucket latrine					Bucket latrine									
	Other					Other									
	<b>Public/shared Latrines</b>					<b>Public/shared Latrines</b>									
	Ventilated Improved Pit latrine					Ventilated Improved Pit latrine									
	Pit latrine with slab/covered latrine					Pit latrine with slab/covered latrine									
	Traditional latrine					Traditional latrine									
	Pit latrine without slab/open pit					Pit latrine without slab/open pit									
	Hanging toilet/hanging latrine					Hanging toilet/hanging latrine									
	Bucket latrine					Bucket latrine									
	Other					Other									
	<b>Composting toilets</b>					<b>Composting toilets</b>									
	Composting toilet (private)					Composting toilet (private)									
	Composting toilet (shared)					Composting toilet (shared)									
	<b>Other improved</b>				Population without household connections but served	<b>Other improved</b>	60.0	83.9							
	Other					Other									
	Other					Other									
No Facilities/Bush	<b>No facility, bush, field</b>	1.1	15.8	12.0	Total population unserved	<b>No facility, bush, field</b>	21.5	15.8							
	<b>Other unimproved</b>					<b>Other unimproved</b>									
	Other					Other									
	Other					Other									
	<b>DK/missing information</b>					<b>DK/missing information</b>									
	<b>Total</b>	99.9	100.0	100.0		<b>Total</b>	100.0	100.0							
<b>Calculations</b>					<b>Calculations</b>										
	50% of traditional latrines considered improved	45.8	41.7												
<b>Estimations</b>					<b>Estimations</b>										
	SC, based on MIC596	1.8	0.2												
<b>Access to improved sanitation :</b>		<b>53%</b>	<b>43%</b>	<b>3%</b>	<b>Access to improved plus shared sanitation:</b>		<b>78%</b>	<b>84%</b>							
<b>Access to sewerage connections :</b>		<b>2%</b>	<b>0%</b>		<b>Access to sewerage connections :</b>		<b>18%</b>	<b>0%</b>							
Used for the estimates: Yes Yes					Used for the estimates: No No										
Used for the estimates: Yes Yes					Used for the estimates: No No										
<b>Ratios</b>	Shared improved facilities/all improved facilities	3%	0%	1%	<b>Ratios</b>	Shared improved facilities/all improved facilities									
	Improved latrine / All latrines					Improved latrine / All latrines									
	Covered dry latrines / All dry latrines					Covered dry latrines / All dry latrines									
	VIP / All latrines	3%	0%			VIP / All latrines									
	Traditional latrines / All latrines	97%	100%	99%		Traditional latrines / All latrines									
	Improved + traditional latrines / All latrines	100%	100%	100%		Improved + traditional latrines / All latrines									
Sewerage connection among flush/pour flush					Sewerage connection among flush										
Number of people covered by the survey:					Number of people covered by the survey:										
Number of households covered by the survey:					Number of households covered by the survey:										
Total population:					Total population: 6553 24504										
<b>Comments</b>					<b>Comments</b>										

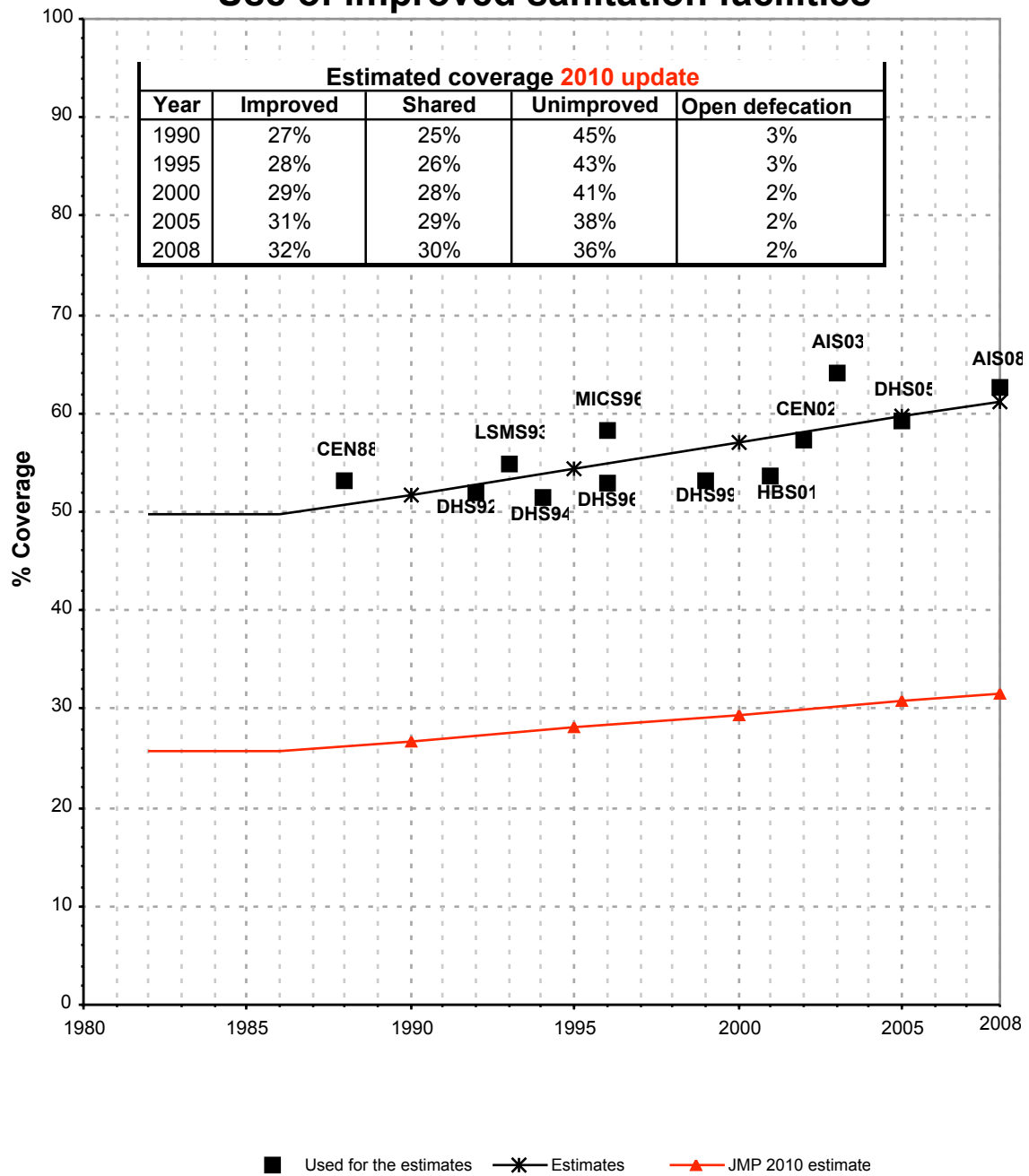
Use of sanitation facilities		HBS01			Tanzania			Use of sanitation facilities		CEN02			Tanzania		
Household Budget Survey					2001			Census					2002		
								Basic Demographic and Socio-Economic Characteristics							
Original denomination	Classification	Urban	Rural	Total	Original denomination	Classification	Urban	Rural	Total	Original denomination	Classification	Urban	Rural	Total	
	<b>Flush and pour flush</b>	8.1	0.5	2.2		<b>Flush and pour flush</b>	12.5	0.5	3.6		<b>Flush and pour flush</b>	12.5	0.5	3.6	
	to piped sewer system					to piped sewer system					to piped sewer system				
	to septic tank					to septic tank					to septic tank				
	to pit					to pit					to pit				
	to unknown place/ not sure/DK					to unknown place/ not sure/DK					to unknown place/ not sure/DK				
	to elsewhere					to elsewhere					to elsewhere				
Flush toilet	<b>Flush/toilets</b>	8.1	0.5	2.2	Flush toilet	<b>Flush/toilets</b>	12.5	0.5	3.6	Flush toilet	<b>Flush/toilets</b>	12.5	0.5	3.6	
	to piped sewer system					to piped sewer system					to piped sewer system				
	to septic tank					to septic tank					to septic tank				
	to pit					to pit					to pit				
	to unknown place/ not sure/DK					to unknown place/ not sure/DK					to unknown place/ not sure/DK				
	to elsewhere					to elsewhere					to elsewhere				
	<b>Private flush/toilet</b>					<b>Private flush/toilet</b>					<b>Private flush/toilet</b>				
	to piped sewer system					to piped sewer system					to piped sewer system				
	to septic tank					to septic tank					to septic tank				
	to pit					to pit					to pit				
	to unknown place/ not sure/DK					to unknown place/ not sure/DK					to unknown place/ not sure/DK				
	to elsewhere					to elsewhere					to elsewhere				
	<b>Public/shared flush/toilet</b>					<b>Public/shared flush/toilet</b>					<b>Public/shared flush/toilet</b>				
	to piped sewer system					to piped sewer system					to piped sewer system				
	to septic tank					to septic tank					to septic tank				
	to pit					to pit					to pit				
	to unknown place/ not sure/DK					to unknown place/ not sure/DK					to unknown place/ not sure/DK				
	to elsewhere					to elsewhere					to elsewhere				
	<b>Latrines</b>	88.8	91.2	90.5		<b>Latrines</b>	85.9	87.5	87.1		<b>Latrines</b>	85.9	87.5	87.1	
	<b>Pour flush latrines</b>					<b>Pour flush latrines</b>					<b>Pour flush latrines</b>				
	to piped sewer system					to piped sewer system					to piped sewer system				
	to septic tank					to septic tank					to septic tank				
	to pit					to pit					to pit				
	to unknown place/ not sure/DK					to unknown place/ not sure/DK					to unknown place/ not sure/DK				
	to elsewhere					to elsewhere					to elsewhere				
	<b>Private pour flush latrine</b>					<b>Private pour flush latrine</b>					<b>Private pour flush latrine</b>				
	to piped sewer system					to piped sewer system					to piped sewer system				
	to septic tank					to septic tank					to septic tank				
	to pit					to pit					to pit				
	to unknown place/ not sure/DK					to unknown place/ not sure/DK					to unknown place/ not sure/DK				
	to elsewhere					to elsewhere					to elsewhere				
	<b>Public/shared pour flush latrine</b>					<b>Public/shared pour flush latrine</b>					<b>Public/shared pour flush latrine</b>				
	to piped sewer system					to piped sewer system					to piped sewer system				
	to septic tank					to septic tank					to septic tank				
	to pit					to pit					to pit				
	to unknown place/ not sure/DK					to unknown place/ not sure/DK					to unknown place/ not sure/DK				
	to elsewhere					to elsewhere					to elsewhere				
	<b>Dry latrines</b>	88.8	91.2	90.5		<b>Dry latrines</b>	85.9	87.5	87.1		<b>Dry latrines</b>	85.9	87.5	87.1	
	<b>Improved latrines</b>	2.3	0.4	0.8		<b>Improved latrines</b>	3.6	0.6	1.4		<b>Improved latrines</b>	3.6	0.6	1.4	
Ventilated Improved Pit latrine	Ventilated Improved Pit latrine	2.3	0.4	0.8	Ventilated Improved Pit latrine	Ventilated Improved Pit latrine	3.6	0.6	1.4	Ventilated Improved Pit latrine	Ventilated Improved Pit latrine	3.6	0.6	1.4	
Pit latrine	Pit latrine with slab/covered latrine				Pit latrine	Pit latrine with slab/covered latrine				Pit latrine	Pit latrine with slab/covered latrine				
	Traditional latrine	86.5	90.8	89.7	Traditional pit toilet	Traditional latrine	82.3	86.9	85.7	Traditional pit toilet	Traditional latrine	82.3	86.9	85.7	
	Pit latrine without slab/open pit					Pit latrine without slab/open pit					Pit latrine without slab/open pit				
	Hanging toilet/hanging latrine					Hanging toilet/hanging latrine					Hanging toilet/hanging latrine				
	Bucket latrine					Bucket latrine					Bucket latrine				
	Other					Other					Other				
	<b>Private Latrines</b>					<b>Private Latrines</b>					<b>Private Latrines</b>				
	Ventilated Improved Pit latrine					Ventilated Improved Pit latrine					Ventilated Improved Pit latrine				
	Pit latrine with slab/covered latrine					Pit latrine with slab/covered latrine					Pit latrine with slab/covered latrine				
	Traditional latrine					Traditional latrine					Traditional latrine				
	Pit latrine without slab/open pit					Pit latrine without slab/open pit					Pit latrine without slab/open pit				
	Hanging toilet/hanging latrine					Hanging toilet/hanging latrine					Hanging toilet/hanging latrine				
	Bucket latrine					Bucket latrine					Bucket latrine				
	Other					Other					Other				
	<b>Public/shared Latrines</b>					<b>Public/shared Latrines</b>					<b>Public/shared Latrines</b>				
	Ventilated Improved Pit latrine					Ventilated Improved Pit latrine					Ventilated Improved Pit latrine				
	Pit latrine with slab/covered latrine					Pit latrine with slab/covered latrine					Pit latrine with slab/covered latrine				
	Traditional latrine					Traditional latrine					Traditional latrine				
	Pit latrine without slab/open pit					Pit latrine without slab/open pit					Pit latrine without slab/open pit				
	Hanging toilet/hanging latrine					Hanging toilet/hanging latrine					Hanging toilet/hanging latrine				
	Bucket latrine					Bucket latrine					Bucket latrine				
	Other					Other					Other				
	<b>Composting toilets</b>					<b>Composting toilets</b>					<b>Composting toilets</b>				
	Composting toilet (private)					Composting toilet (private)					Composting toilet (private)				
	Composting toilet (shared)					Composting toilet (shared)					Composting toilet (shared)				
	<b>Other improved</b>					<b>Other improved</b>					<b>Other improved</b>				
	Other					Other					Other				
	Other					Other					Other				
No Toilet	<b>No facility, bush, field</b>	2.9	8.1	7.1	No Facilities	<b>No facility, bush, field</b>	1.6	12.0	9.2	No Facilities	<b>No facility, bush, field</b>	1.6	12.0	9.2	
	<b>Other unimproved</b>	0.2	0.1	0.1		<b>Other unimproved</b>					<b>Other unimproved</b>				
	Other	0.2	0.1	0.1		Other					Other				
	Other					Other					Other				
	<b>DK/missing information</b>					<b>DK/missing information</b>					<b>DK/missing information</b>				
	<b>Total</b>	100.0	99.9	99.9		<b>Total</b>	100.0	100.0	99.9		<b>Total</b>	100.0	100.0	99.9	
<b>Calculations</b>					<b>Calculations</b>					<b>Calculations</b>					
	50% of traditional latrines considered improved	43.2	45.4			50% of traditional latrines considered improved	41.2	43.5			50% of traditional latrines considered improved	41.2	43.5		
<b>Estimations</b>					<b>Estimations</b>					<b>Estimations</b>					
	SC, based on MICS96	3.5	0.1			SC, based on MICS96	5.5	0.1			SC, based on MICS96	5.5	0.1		
<b>Access to improved sanitation :</b>		<b>54%</b>	<b>46%</b>	<b>3%</b>	<b>Access to improved sanitation :</b>		<b>57%</b>	<b>45%</b>	<b>5%</b>	<b>Access to improved sanitation :</b>		<b>57%</b>	<b>45%</b>	<b>5%</b>	
<b>Access to sewerage connections :</b>		<b>4%</b>	<b>0%</b>		<b>Access to sewerage connections :</b>		<b>5%</b>	<b>0%</b>		<b>Access to sewerage connections :</b>		<b>5%</b>	<b>0%</b>		
Used for the estimates		Yes	Yes		Used for the estimates		Yes	Yes		Used for the estimates		Yes	Yes		
Used for the estimates		Yes	Yes		Used for the estimates		Yes	Yes		Used for the estimates		Yes	Yes		
<b>Ratios</b>	Shared improved facilities/all improved facilities	3%	0%	1%	<b>Ratios</b>	Shared improved facilities/all improved facilities	4%	1%	2%	<b>Ratios</b>	Shared improved facilities/all improved facilities	4%	1%	2%	
	Improved latrine / All latrines					Improved latrine / All latrines					Improved latrine / All latrines				
	Covered dry latrines / All dry latrines					Covered dry latrines / All dry latrines					Covered dry latrines / All dry latrines				
	VIP / All latrines					VIP / All latrines					VIP / All latrines				
	Traditional latrines / All latrines	97%	100%	99%		Traditional latrines / All latrines	96%	99%	98%		Traditional latrines / All latrines	96%	99%	98%	
	Improved + traditional latrines / All latrines	100%	100%	100%		Improved + traditional latrines / All latrines	100%	100%	100%		Improved + traditional latrines / All latrines	100%	100%	100%	
Sewerage connection among flush/pour flush					Sewerage connection among flush/pour flush					Sewerage connection among flush/pour flush					
Sewerage connection among flush					Sewerage connection among flush					Sewerage connection among flush					
Number of people covered by the survey:					Number of people covered by the survey:					Number of people covered by the survey:					
Number of households covered by the survey:					Number of households covered by the survey:					Number of households covered by the survey:					
Total population:					Total population:					Total population:					
<b>Comments</b>					<b>Comments</b>					<b>Comments</b>					

Use of sanitation facilities		AIS03			Tanzania			Use of sanitation facilities		DHS05			Tanzania		
HIV/Aids Indicator Survey					2003			Demographic and Health Survey					2005		
Original denomination	Classification	Urban	Rural	Total	Original denomination	Classification	Urban	Rural	Total						
	<b>Flush and pour flush</b>	13.3	0.5	3.9		<b>Flush and pour flush</b>	8.8	0.4							
	to piped sewer system					to piped sewer system									
	to septic tank					to septic tank									
	to pit					to pit									
	to unknown place/ not sure/DK					to unknown place/ not sure/DK									
	to elsewhere					to elsewhere									
Flush toilet	<b>Flush/toilets</b>	13.3	0.5	3.9	Flush toilet	<b>Flush/toilets</b>	8.8	0.4							
	to piped sewer system					to piped sewer system									
	to septic tank					to septic tank									
	to pit					to pit									
	to unknown place/ not sure/DK					to unknown place/ not sure/DK									
	to elsewhere					to elsewhere									
	<b>Private flush/toilet</b>					<b>Private flush/toilet</b>									
	to piped sewer system					to piped sewer system									
	to septic tank					to septic tank									
	to pit					to pit									
	to unknown place/ not sure/DK					to unknown place/ not sure/DK									
	to elsewhere					to elsewhere									
	<b>Public/shared flush/toilet</b>					<b>Public/shared flush/toilet</b>									
	to piped sewer system					to piped sewer system									
	to septic tank					to septic tank									
	to pit					to pit									
	to unknown place/ not sure/DK					to unknown place/ not sure/DK									
	to elsewhere					to elsewhere									
	<b>Latrines</b>	85.0	84.0	84.3		<b>Latrines</b>	88.8	82.9							
	<b>Pour flush latrines</b>					<b>Pour flush latrines</b>									
	to piped sewer system					to piped sewer system									
	to septic tank					to septic tank									
	to pit					to pit									
	to unknown place/ not sure/DK					to unknown place/ not sure/DK									
	to elsewhere					to elsewhere									
	<b>Private pour flush latrine</b>					<b>Private pour flush latrine</b>									
	to piped sewer system					to piped sewer system									
	to septic tank					to septic tank									
	to pit					to pit									
	to unknown place/ not sure/DK					to unknown place/ not sure/DK									
	to elsewhere					to elsewhere									
	<b>Public/shared pour flush latrine</b>					<b>Public/shared pour flush latrine</b>									
	to piped sewer system					to piped sewer system									
	to septic tank					to septic tank									
	to pit					to pit									
	to unknown place/ not sure/DK					to unknown place/ not sure/DK									
	to elsewhere					to elsewhere									
	<b>Dry latrines</b>	85.0	84.0	84.3		<b>Dry latrines</b>	88.8	82.9							
	<b>Improved latrines</b>	16.5	2.1	6.0		<b>Improved latrines</b>	12.1	0.9							
Ventilated Improved Pit latrine	Ventilated Improved Pit latrine	16.5	2.1	6.0	VIP latrine	Ventilated Improved Pit latrine	12.1	0.9							
	Pit latrine with slab/covered latrine					Pit latrine with slab/covered latrine									
Traditional pit toilet	Traditional latrine	68.5	81.9	78.3	Traditional pit toilet	Traditional latrine	76.7	82.0							
	Pit latrine without slab/open pit					Pit latrine without slab/open pit									
	Hanging toilet/hanging latrine					Hanging toilet/hanging latrine									
	Bucket latrine					Bucket latrine									
	Other					Other									
	<b>Private Latrines</b>					<b>Private Latrines</b>									
	Ventilated Improved Pit latrine					Ventilated Improved Pit latrine									
	Pit latrine with slab/covered latrine					Pit latrine with slab/covered latrine									
	Traditional latrine					Traditional latrine									
	Pit latrine without slab/open pit					Pit latrine without slab/open pit									
	Hanging toilet/hanging latrine					Hanging toilet/hanging latrine									
	Bucket latrine					Bucket latrine									
	Other					Other									
	<b>Public/shared Latrines</b>					<b>Public/shared Latrines</b>									
	Ventilated Improved Pit latrine					Ventilated Improved Pit latrine									
	Pit latrine with slab/covered latrine					Pit latrine with slab/covered latrine									
	Traditional latrine					Traditional latrine									
	Pit latrine without slab/open pit					Pit latrine without slab/open pit									
	Hanging toilet/hanging latrine					Hanging toilet/hanging latrine									
	Bucket latrine					Bucket latrine									
	Other					Other									
	<b>Composting toilets</b>					<b>Composting toilets</b>									
	Composting toilet (private)					Composting toilet (private)									
	Composting toilet (shared)					Composting toilet (shared)									
	<b>Other improved</b>					<b>Other improved</b>									
	Other					Other									
	Other					Other									
No Facilities/Bush	<b>No facility, bush, field</b>	1.4	15.0	11.3	No facility, bush, field	<b>No facility, bush, field</b>	2.4	16.7							
	<b>Other unimproved</b>					<b>Other unimproved</b>									
	Other					Other									
	Other					Other									
	<b>DK/missing information</b>					<b>DK/missing information</b>									
	<b>Total</b>	99.7	99.5	99.5		<b>Total</b>	100.0	100.0							
<b>Calculations</b>					<b>Calculations</b>										
	50% of traditional latrines considered improved	34.3	41.0			50% of traditional latrines considered improved	38.4	41.0							
<b>Estimations</b>					<b>Estimations</b>										
	SC, based on MICS96	5.8	0.1			SC, based on MICS96	3.8	0.1							
<b>Access to improved sanitation :</b>		<b>64%</b>	<b>44%</b>	<b>10%</b>	<b>Access to improved sanitation :</b>		<b>59%</b>	<b>42%</b>							
<b>Access to sewerage connections :</b>		<b>6%</b>	<b>0%</b>		<b>Access to sewerage connections :</b>		<b>4%</b>	<b>0%</b>							
Used for the estimates		Yes	Yes		Used for the estimates		Yes	Yes							
Used for the estimates		Yes	Yes		Used for the estimates		Yes	Yes							
<b>Ratios</b>	Shared improved facilities/all improved facilities	19%	3%	7%	<b>Ratios</b>	Shared improved facilities/all improved facilities	42.2%	19.8%							
	Improved latrine / All latrines					Improved latrine / All latrines	14%	1%							
	Covered dry latrines / All dry latrines					Covered dry latrines / All dry latrines									
	VIP / All latrines	19%	3%			VIP / All latrines	14%	1%							
	Traditional latrines / All latrines	81%	98%	93%		Traditional latrines / All latrines	86%	99%							
	Improved + traditional latrines / All latrines	100%	100%	100%		Improved + traditional latrines / All latrines	100%	100%							
	Sewerage connection among flush/pour flush					Sewerage connection among flush/pour flush									
Sewerage connection among flush				Sewerage connection among flush											
Number of people covered by the survey:					Number of people covered by the survey:										
Number of households covered by the survey:					Number of households covered by the survey:										
Total population:					Total population:										
<b>Comments</b>					<b>Comments</b>										

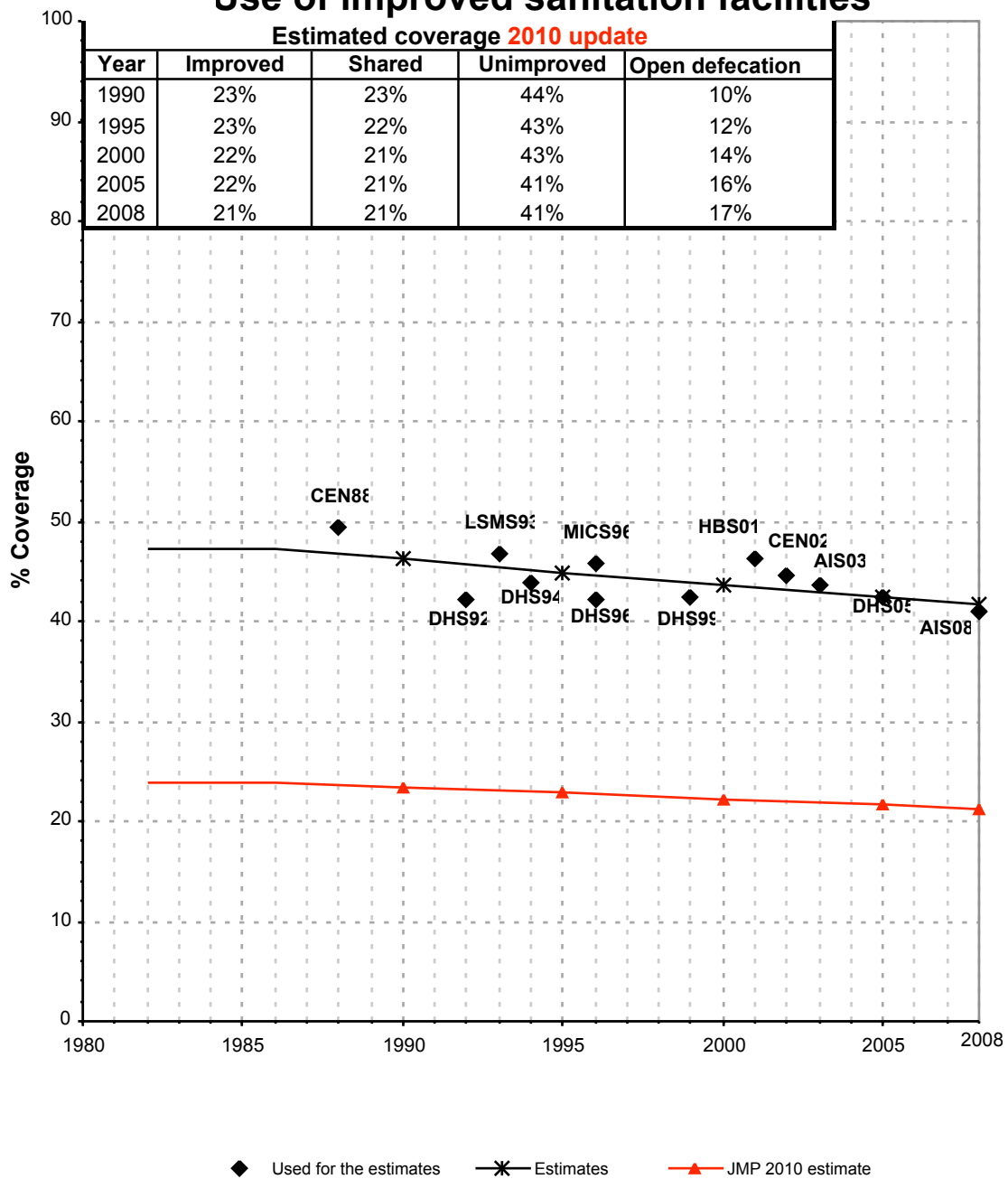


Tanzania			SANITATION															
			URBAN								RURAL							
			Sewer connection		Total		Open defecation		Shared		Sewer connection		Total		Open defecation		Shared	
Source	Code	Year	Used	Not used	Used	Not used	Used	Not used	Used	Not used	Used	Not used	Used	Not used	Used	Not used	Used	Not used
Census	CEN88	1988	3.2		53.0		6.3				1.4		49.3		10.6			
Demographic and Health Survey	DHS92	1992	1.8		52.1		2.0				0.1		42.2		15.7			
Living Standarts Measurement Survey	LSMS93	1993	5.2		54.8		2.1				0.3		46.9		6.9			
Demographic and Health Survey	DHS94	1994	1.8		51.6		2.2				0.1		44.0		11.9			
Demographic and Health Survey	DHS96	1996	2.2		53.0		1.7				0.2		42.2		16.0			
Multiple Indicator Cluster Survey	MICS96	1996	6.2		58.2		1.6				0.2		45.8		9.9			
Reproductive and Child Health Survey	DHS99	1999	1.8		53.1		1.1				0.2		42.5		15.8			
Global Water Supply and Sanitation Assessment 2000.	JMP99	1999		18.5		78.5						0.3		84.2				
Household Budget Survey	HBS01	2001	3.5		53.7		2.9				0.1		46.3		8.1			
Census	CEN02	2002	5.5		57.3		1.6				0.1		44.6		12.0			
HIV/Aids Indicator Survey	AIS03	2003	5.8		64.1		1.4				0.1		43.6		15.0			
Demographic and Health Survey	DHS05	2005	3.8		59.3		2.4		42.2		0.1		42.3		16.7		19.8	
Aids Indicator Survey	AIS08	2008			62.6		3.0		54.5				41.0		20.5		78.5	

# U. Rep of Tanzania - urban - Use of improved sanitation facilities



# U. Rep of Tanzania - rural - Use of improved sanitation facilities



# Sanitation

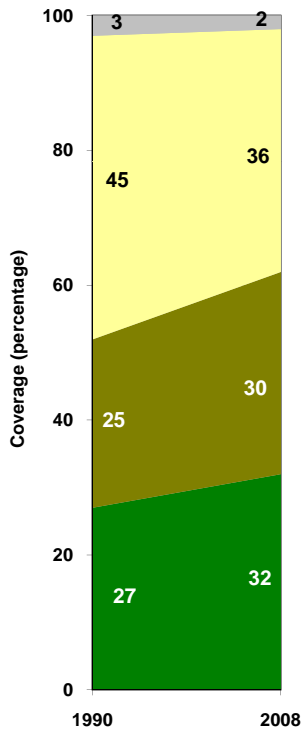
Tanzania	Sanitation coverage estimates					
	Urban (%)		Rural (%)		Total (%)	
	1990	2008	1990	2008	1990	2008
Improved facilities	27	32	23	21	24	24
Shared facilities	25	30	23	21	23	23
Unimproved facilities	45	36	44	41	44	40
Open defecation	3	2	10	17	9	13

Source: WHO/UNICEF JMP, 2010

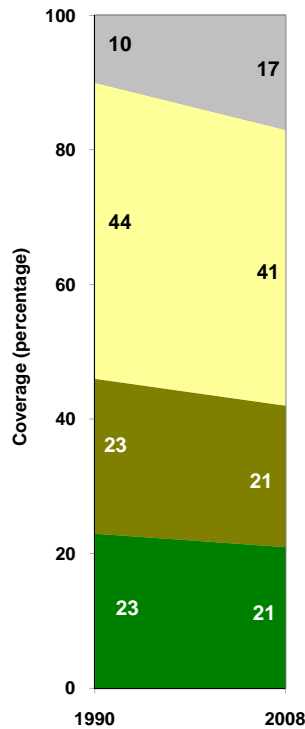
Tanzania	Urban		Rural		Total	
	1990	2008	1990	2008	1990	2008
Population (x1000)	4,807	10,822	20,648	31,662	25,455	42,484

Source: UN / Population Division, 2008

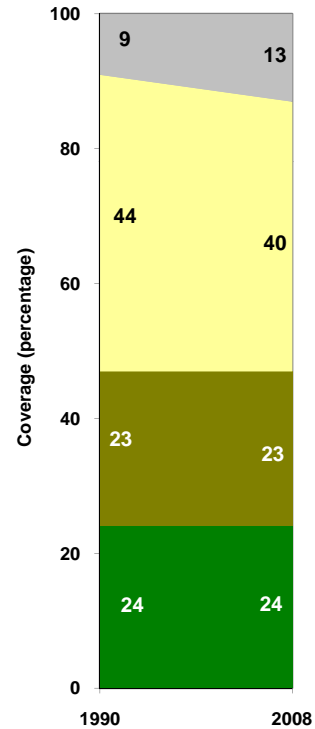
Urban sanitation trends



Rural sanitation trends



Total sanitation trends



- Open defecation
- Unimproved facilities
- Shared facilities
- Improved facilities

- Open defecation
- Unimproved facilities
- Shared facilities
- Improved facilities

- Open defecation
- Unimproved facilities
- Shared facilities
- Improved facilities