

WHO / UNICEF

Joint Monitoring Programme
for Water Supply and Sanitation

Estimates for the use of

**Improved Drinking-Water Sources
and Improved Sanitation Facilities**

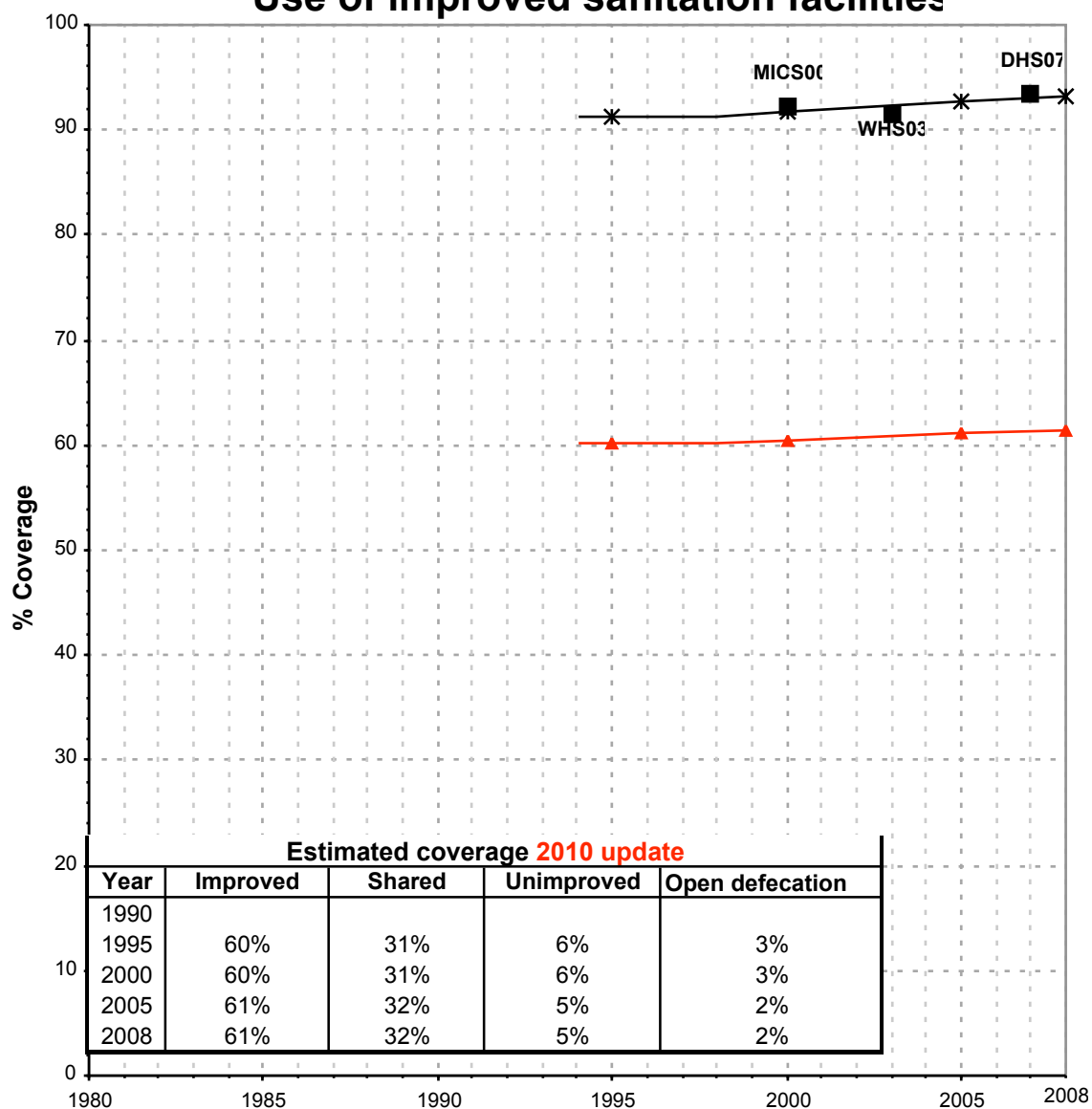
Updated March 2010

childinfo.org

Use of sanitation facilities		MICS00			Swaziland			Use of sanitation facilities		WHS03			Swaziland		
Multiple Indicator Cluster Survey					World Health Survey										
Report, December 2000					2000			2003							
Original denomination	Classification	Urban	Rural	Total	Original denomination	Classification	Urban	Rural	Total						
	Flush and pour flush	48.7	4.4	13.5		Flush and pour flush	58.6	43.5							
	to piped sewer system					to piped sewer system	32.6	5.7							
	to septic tank					to septic tank	25.7	36.1							
	to pit					to pit									
	to unknown place/ not sure/DK					to unknown place/ not sure/DK									
	to elsewhere					to elsewhere									
Flush to sewage/septic tank	Flush/toilets	46.8	3.5	12.4		Flush/toilets	57.6	41.8							
	to piped sewer system					to piped sewer system	32.6	5.7							
	to septic tank					to septic tank	25.7	36.1							
	to pit					to pit									
	to unknown place/ not sure/DK					to unknown place/ not sure/DK									
	to elsewhere					to elsewhere									
	Private flush/toilet					Private flush/toilet	40.8	29.2							
	to piped sewer system				Private domestic connection to sewage system	to piped sewer system	28.8	4.7							
	to septic tank				Private flush to septic tank	to septic tank	12.0	24.5							
	to pit					to pit									
	to unknown place/ not sure/DK					to unknown place/ not sure/DK									
	to elsewhere					to elsewhere									
	Public/shared flush/toilet					Public/shared flush/toilet	16.8	12.6							
	to piped sewer system				Shared domestic connection to sewage system	to piped sewer system	3.7	0.9							
	to septic tank				Shared flush to septic tank	to septic tank	13.1	11.7							
	to pit					to pit									
	to unknown place/ not sure/DK					to unknown place/ not sure/DK									
	to elsewhere					to elsewhere									
	Latrines	50.1	62.4	59.9		Latrines	38.6	37.3							
Pour flush latrine	Pour flush latrines	1.9	0.9	1.1		Pour flush latrines	0.9	1.7							
	to piped sewer system					to piped sewer system									
	to septic tank					to septic tank									
	to pit					to pit									
	to unknown place/ not sure/DK					to unknown place/ not sure/DK									
	to elsewhere					to elsewhere									
	Private pour flush latrine				Private pour flush latrine	Private pour flush latrine	0.4	1.0							
	to piped sewer system					to piped sewer system									
	to septic tank					to septic tank									
	to pit					to pit									
	to unknown place/ not sure/DK					to unknown place/ not sure/DK									
	to elsewhere					to elsewhere									
	Public/shared pour flush latrine				Shared pour flush latrine	Public/shared pour flush latrine	0.5	0.7							
	to piped sewer system					to piped sewer system									
	to septic tank					to septic tank									
	to pit					to pit									
	to unknown place/ not sure/DK					to unknown place/ not sure/DK									
	to elsewhere					to elsewhere									
	Dry latrines	48.2	61.5	58.8		Dry latrines	37.7	35.6							
	Improved latrines	10.7	17.3	16.0		Improved latrines	32.9	31.1							
Improved pit latrine	Ventilated Improved Pit latrine	10.7	17.3	16.0		Ventilated Improved Pit latrine									
	Pit latrine with slab/covered latrine					Pit latrine with slab/covered latrine	32.9	31.1							
Traditional pit latrine	Traditional latrine	37.5	44.2	42.8		Traditional latrine									
	Pit latrine without slab/open pit				Uncovered dry latrine (without privacy)	Pit latrine without slab/open pit	4.3	4.1							
	Hanging toilet/hanging latrine					Hanging toilet/hanging latrine									
	Bucket latrine				Bucket latrine (where fresh excreta are manually removed)	Bucket latrine	0.5	0.5							
	Other					Other									
	Private Latrines					Private Latrines	22.4	20.7							
	Ventilated Improved Pit latrine					Ventilated Improved Pit latrine									
	Pit latrine with slab/covered latrine				Private covered dry latrine (with privacy)	Pit latrine with slab/covered latrine	22.4	20.7							
	Traditional latrine					Traditional latrine									
	Pit latrine without slab/open pit					Pit latrine without slab/open pit									
	Hanging toilet/hanging latrine					Hanging toilet/hanging latrine									
	Bucket latrine					Bucket latrine									
	Other					Other									
	Public/shared Latrines					Public/shared Latrines	10.5	10.4							
	Ventilated Improved Pit latrine					Ventilated Improved Pit latrine									
	Pit latrine with slab/covered latrine				Shared covered dry latrine (with privacy)	Pit latrine with slab/covered latrine	10.5	10.4							
	Traditional latrine					Traditional latrine									
	Pit latrine without slab/open pit					Pit latrine without slab/open pit									
	Hanging toilet/hanging latrine					Hanging toilet/hanging latrine									
	Bucket latrine					Bucket latrine									
	Other					Other									
	Composting toilets					Composting toilets									
	Composting toilet (private)					Composting toilet (private)									
	Composting toilet (shared)					Composting toilet (shared)									
	Other improved					Other improved									
	Other					Other									
	Other					Other									
No facilities/ bush/ field	No facility, bush, field	2.6	31.6	25.6	No facilities (open defecation)	No facility, bush, field	3.0	18.9							
	Other unimproved	0.5	2.5	2.1		Other unimproved	0.8	2.0							
	Other	0.5	2.5	2.1	Other	Other	0.8	2.0							
	Other					Other									
	DK/missing information					DK/missing information									
	Total	100.0	100.0	100.0		Total	100.0	100.0							
Calculations					Calculations										
	estimated improved latrines from WHS03	32.8	38.5												
Estimations					Estimations										
	SC, based on WHS03	27.1	0.6												
Access to improved sanitation :		92%	60%		Access to improved sanitation :		91%	75%							
Access to sewerage connections :		27%	1%		Access to sewerage connections :		33%	6%							
Used for the estimates		Yes	Yes		Used for the estimates		Yes	Yes							
Used for the estimates		Yes	Yes		Used for the estimates		Yes	Yes							
Ratios	Shared improved facilities/all improved facilities	25%	29%	29%	Ratios	Shared improved facilities/all improved facilities	30.4%	31.7%							
	Improved latrine / All latrines					Improved latrine / All latrines	88%	88%							
	Covered dry latrines / All dry latrines					Covered dry latrines / All dry latrines	87%	87%							
	VIP / All latrines	22%	28%			VIP / All latrines									
	Traditional latrines / All latrines	75%	71%	71%		Traditional latrines / All latrines									
	Improved + traditional latrines / All latrines	100%	100%	100%		Improved + traditional latrines / All latrines									
Sewerage connection among flush/pour flush				Sewerage connection among flush/pour flush	55.6	13.0									
Sewerage connection among flush				Sewerage connection among flush	56.5	13.6									
Number of people covered by the survey:					Number of people covered by the survey:										
Number of households covered by the survey:					Number of households covered by the survey:										
Total population:					Total population:										
Comments					Comments										

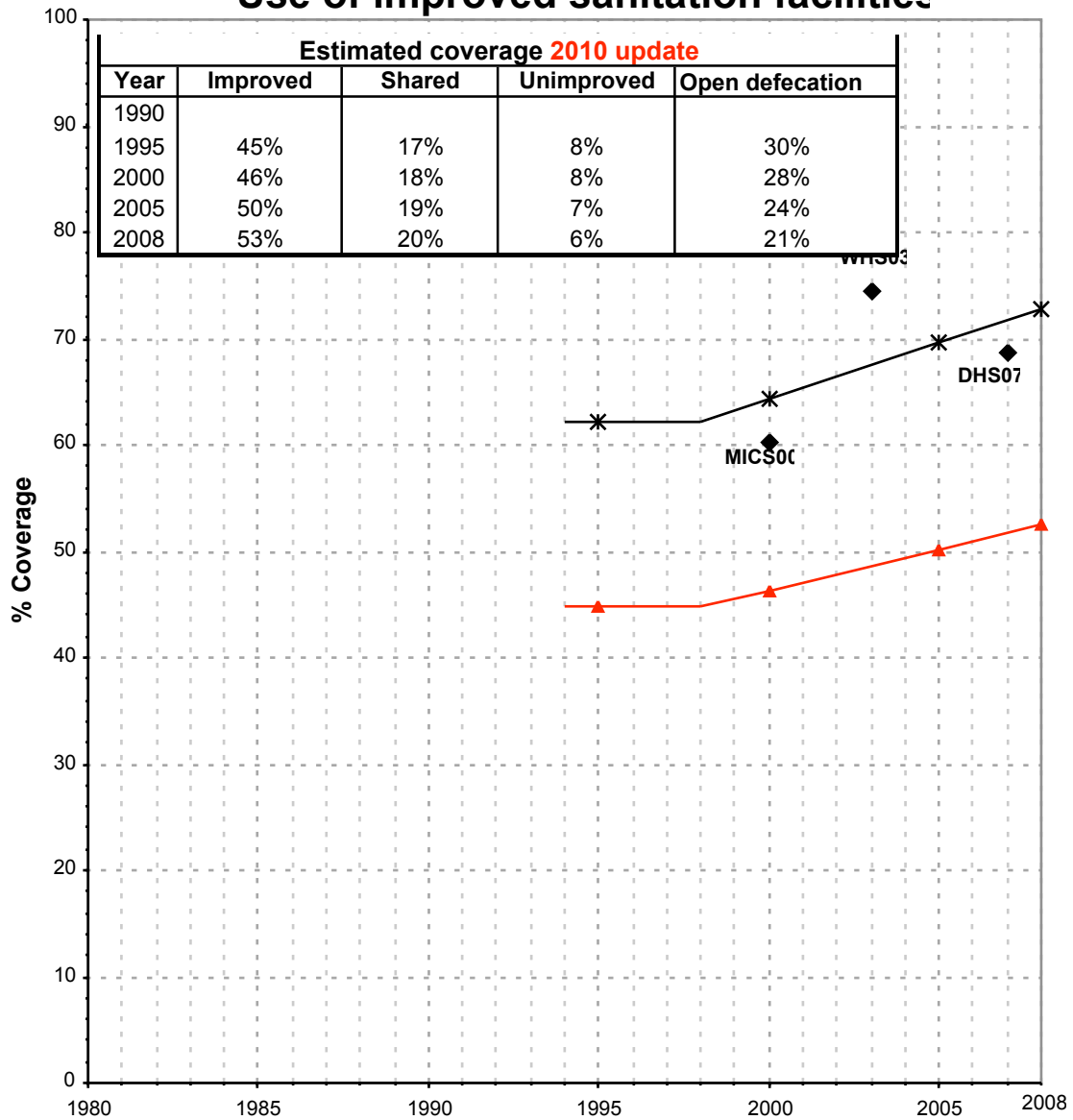
Swaziland			SANITATION															
			URBAN								RURAL							
			Sewer connection		Total		Open defecation		Shared		Sewer connection		Total		Open defecation		Shared	
Source	Code	Year	Used	Not used	Used	Not used	Used	Not used	Used	Not used	Used	Not used	Used	Not used	Used	Not used	Used	Not used
Multiple Indicator Cluster Survey	MICS00	2000	27.1		92.2		2.6				0.6		60.2		31.6			
World Health Survey	WHS03	2003	32.6		91.5		3.0		30.4		5.7		74.6		18.9		31.7	
Demographic and Health Survey	DHS07	2007			93.4		1.7		37.8				68.8		24.7		24.2	

Swaziland - urban - Use of improved sanitation facilities



Used for the estimates
 * Estimates
 JMP 2010 estimate

Swaziland - rural - Use of improved sanitation facilities



Sanitation

Swaziland	Sanitation coverage estimates					
	Urban (%)		Rural (%)		Total (%)	
	1995	2008	1995	2008	1995	2008
Improved facilities	60	61	45	53	48	55
Shared facilities	31	32	17	20	20	23
Unimproved facilities	6	5	8	6	8	6
Open defecation	3	2	30	21	24	16

Source: WHO/UNICEF JMP, 2010

Swaziland	Urban		Rural		Total	
	1995	2008	1995	2008	1995	2008
Population (x1000)	223	290	746	877	969	1,168

Source: UN / Population Division, 2008

