

WHO / UNICEF

Joint Monitoring Programme
for Water Supply and Sanitation

Estimates for the use of

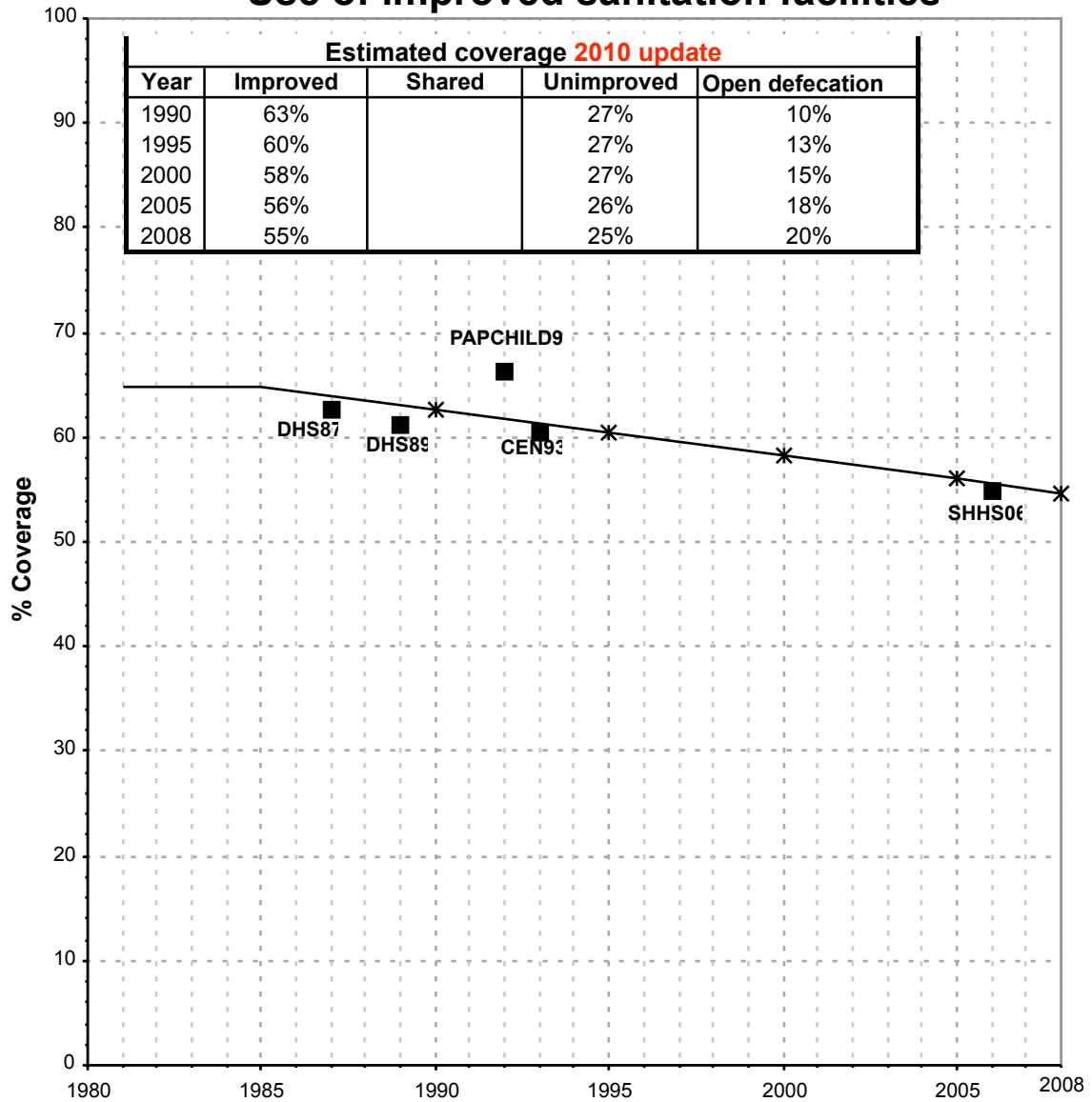
**Improved Drinking-Water Sources
and Improved Sanitation Facilities**

Updated March 2010

childinfo.org

Sudan			SANITATION															
			URBAN								RURAL							
			Sewer connection		Total		Open defecation		Shared		Sewer connection		Total		Open defecation		Shared	
Source	Code	Year	Used	Not used	Used	Not used	Used	Not used	Used	Not used	Used	Not used	Used	Not used	Used	Not used	Used	Not used
Demographic and Health Survey	DHS87	1987	6.2		62.7		9.1				0.0		23.3		45.2			
Demographic and Health Survey	DHS89	1989	5.9		61.3		11.1				0.0		21.3		49.8			
PAPCHILD Survey	PAPCHILD92	1992	8.4		66.2		6.4				0.7		24.5		48.2			
Census	CEN93	1993	5.7		60.5		12.5				0.0		21.5		50.0			
Global Water Supply and Sanitation Assessment 2000.	JMP99	1999		3.3		96.7					0.0		51.0					
Multiple Indicator Cluster Survey	MICS00	2000		0.2		50.2		14.6			0.1		24.5		51.9			
Sudan Household Health Survey		2006	1.4		54.8		19.1				0.1		17.9		56.8			

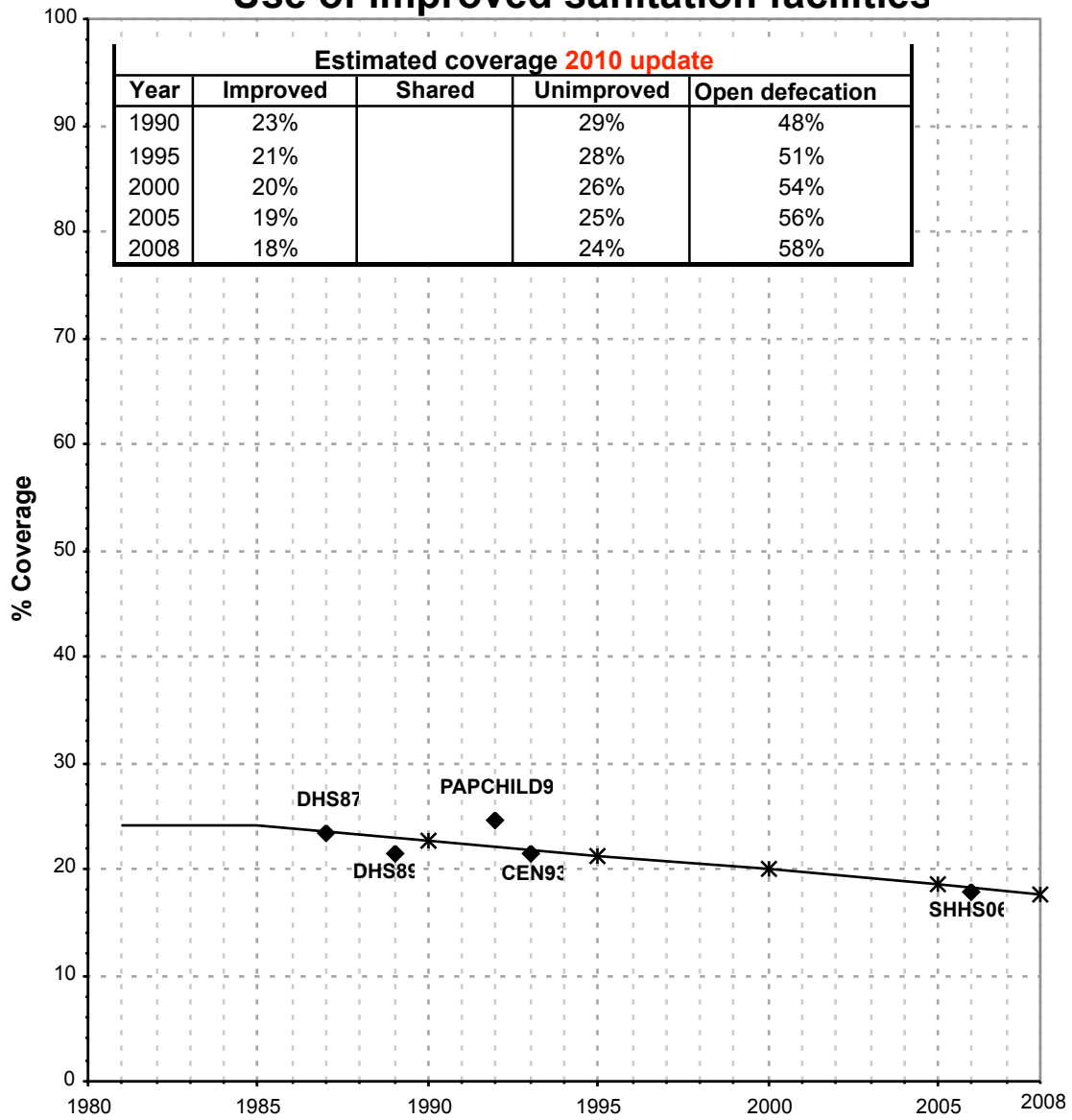
Sudan - urban - Use of improved sanitation facilities



Used for the estimates

*
 Estimates
 JMP 2010 estimate

Sudan - rural - Use of improved sanitation facilities



Used for the estimates
 * Estimates
 JMP 2010 estimate

Sanitation

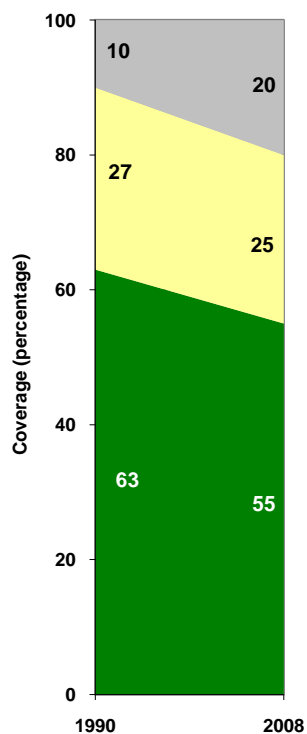
Sudan	Sanitation coverage estimates					
	Urban (%)		Rural (%)		Total (%)	
	1990	2008	1990	2008	1990	2008
Improved facilities	63	55	23	18	34	34
Shared facilities						
Unimproved facilities	27	25	29	24	28	25
Open defecation	10	20	48	58	38	41

Source: WHO/UNICEF JMP, 2010

Sudan	Urban		Rural		Total	
	1990	2008	1990	2008	1990	2008
Population (x1000)	7,211	17,976	19,880	23,372	27,091	41,348

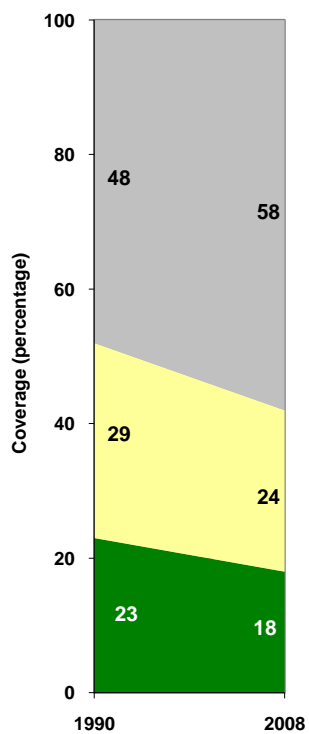
Source: UN / Population Division, 2008

Urban sanitation trends



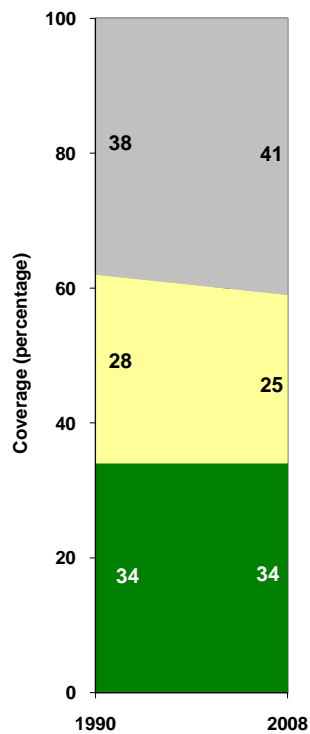
■ Open defecation
 ■ Unimproved facilities
 ■ Shared facilities
 ■ Improved facilities

Rural sanitation trends



■ Open defecation
 ■ Unimproved facilities
 ■ Shared facilities
 ■ Improved facilities

Total sanitation trends



■ Open defecation
 ■ Unimproved facilities
 ■ Shared facilities
 ■ Improved facilities