

WHO / UNICEF

Joint Monitoring Programme
for Water Supply and Sanitation

Estimates for the use of

**Improved Drinking-Water Sources
and Improved Sanitation Facilities**

Updated March 2010

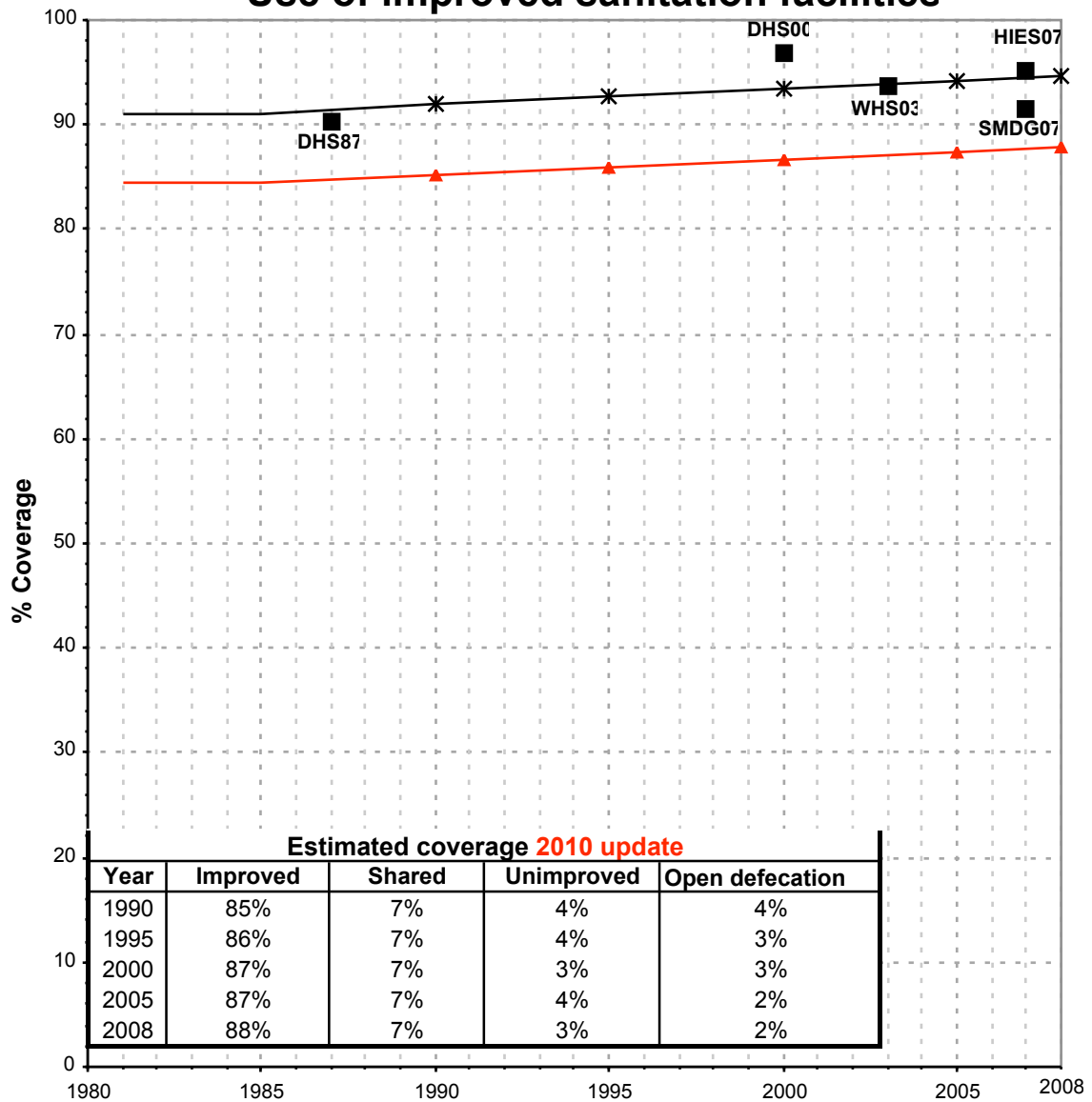
childinfo.org

Use of sanitation facilities		DHS87			Sri Lanka			Use of sanitation facilities		NWSDB92			Sri Lanka		
Demographic and Health Survey					1987			National water supply and Drainage Board					1992		
					Urban			Rural			Total				
Original denomination	Classification				Urban	Rural	Total	Original denomination	Classification				Urban	Rural	Total
Flush toilet + water seal	Flush and pour flush				80.2	37.5		Water seal	Flush and pour flush				77.5	42.1	
	to piped sewer system								to piped sewer system						
	to septic tank								to septic tank						
	to pit								to pit						
	to unknown place/ not sure/DK								to unknown place/ not sure/DK						
	to elsewhere								to elsewhere						
	Flush/toilets								Flush/toilets						
	to piped sewer system								to piped sewer system						
	to septic tank								to septic tank						
	to pit								to pit						
	to unknown place/ not sure/DK								to unknown place/ not sure/DK						
	to elsewhere								to elsewhere						
	Private flush/toilet								Private flush/toilet						
	to piped sewer system								to piped sewer system						
	to septic tank								to septic tank						
	to pit								to pit						
	to unknown place/ not sure/DK								to unknown place/ not sure/DK						
	to elsewhere								to elsewhere						
	Public/shared flush/toilet								Public/shared flush/toilet						
	to piped sewer system								to piped sewer system						
	to septic tank								to septic tank						
	to pit								to pit						
	to unknown place/ not sure/DK								to unknown place/ not sure/DK						
	to elsewhere								to elsewhere						
	Latrines				13.9	41.7			Latrines				5.4	20.7	
	Pour flush latrines								Pour flush latrines						
	to piped sewer system								to piped sewer system						
	to septic tank								to septic tank						
	to pit								to pit						
	to unknown place/ not sure/DK								to unknown place/ not sure/DK						
	to elsewhere								to elsewhere						
	Private pour flush latrine								Private pour flush latrine						
	to piped sewer system								to piped sewer system						
	to septic tank								to septic tank						
	to pit								to pit						
	to unknown place/ not sure/DK								to unknown place/ not sure/DK						
	to elsewhere								to elsewhere						
	Public/shared pour flush latrine								Public/shared pour flush latrine						
	to piped sewer system								to piped sewer system						
	to septic tank								to septic tank						
	to pit								to pit						
	to unknown place/ not sure/DK								to unknown place/ not sure/DK						
	to elsewhere								to elsewhere						
	Dry latrines				13.9	41.7			Dry latrines				5.4	20.7	
	Improved latrines								Improved latrines						
	Ventilated Improved Pit latrine								Ventilated Improved Pit latrine						
	Pit latrine with slab/covered latrine								Pit latrine with slab/covered latrine						
Pit	Traditional latrine				12.7	41.4		Pit	Traditional latrine				5.3	19.7	
	Pit latrine without slab/open pit								Pit latrine without slab/open pit						
	Hanging toilet/hanging latrine								Hanging toilet/hanging latrine						
Bucket	Bucket latrine				1.2	0.3		Bucket	Bucket latrine				0.1	1.0	
	Other								Other						
	Private Latrines								Private Latrines						
	Ventilated Improved Pit latrine								Ventilated Improved Pit latrine						
	Pit latrine with slab/covered latrine								Pit latrine with slab/covered latrine						
	Traditional latrine								Traditional latrine						
	Pit latrine without slab/open pit								Pit latrine without slab/open pit						
	Hanging toilet/hanging latrine								Hanging toilet/hanging latrine						
	Bucket latrine								Bucket latrine						
	Other								Other						
	Public/shared Latrines								Public/shared Latrines						
	Ventilated Improved Pit latrine								Ventilated Improved Pit latrine						
	Pit latrine with slab/covered latrine								Pit latrine with slab/covered latrine						
	Traditional latrine								Traditional latrine						
	Pit latrine without slab/open pit								Pit latrine without slab/open pit						
	Hanging toilet/hanging latrine								Hanging toilet/hanging latrine						
	Bucket latrine								Bucket latrine						
	Other								Other						
	Composting toilets								Composting toilets						
	Composting toilet (private)								Composting toilet (private)						
	Composting toilet (shared)								Composting toilet (shared)						
	Other improved								Other improved						
	Other								Other						
No Facilities	No facility, bush, field				4.8	18.9		No latrines	No facility, bush, field				17.1	37.2	
	Other unimproved				1.2	2.0			Other unimproved						
Other	Other				1.2	2.0			Other						
	Other								Other						
Missing	DK/missing information				0.0	0.0			DK/missing information						
	Total				100.1	100.0			Total				100.0	100.0	
Calculations								Calculations							
Estimations	Estimated pit considered improved based on WHS03				10.0	27.6		Estimations	Estimated pit considered improved based on WHS03				4.2	13.1	
	SC, based on WHS03				22.8	3.7			SC, based on WHS03				22.1	4.1	
Access to improved sanitation : 90% 65%					Access to improved sanitation : 82% 55%										
Access to sewerage connections : 23% 4%					Access to sewerage connections : 22% 4%										
Used for the estimates: Yes Yes					Used for the estimates: No No										
Used for the estimates: Yes Yes					Used for the estimates: No No										
Ratios	Shared improved facilities/all improved facilities							Ratios	Shared improved facilities/all improved facilities						
	Improved latrine / All latrines								Improved latrine / All latrines						
	Covered dry latrines / All dry latrines								Covered dry latrines / All dry latrines						
	VIP / All latrines								VIP / All latrines						
	Traditional latrines / All latrines				92%	99%			Traditional latrines / All latrines				98%	95%	
	Improved + traditional latrines / All latrines								Improved + traditional latrines / All latrines						
	Sewerage connection among flush/pour flush								Sewerage connection among flush/pour flush						
	Sewerage connection among flush								Sewerage connection among flush						
	Number of people covered by the survey:								Number of people covered by the survey:						
	Number of households covered by the survey:								Number of households covered by the survey:						
	Total population:								Total population:						
Comments	Note: the sample is not representative for a few areas in the Northern and Eastern Provinces, which are not conducive for a survey				Comments										

Use of sanitation facilities		JMP99			Sri Lanka			Use of sanitation facilities		DHS00			Sri Lanka						
Global Water Supply and Sanitation Assessment 2000.					Demographic and Health Survey														
Water Supply and Sanitation Sector Questionnaire - 1999. Form 6 sent to WHO.					1999					Preliminary Report					2000				
Original denomination		Classification			Urban	Rural	Total	Original denomination		Classification			Urban	Rural	Total				
Population served with household connections to conventional sewer system		Flush and pour flush			3.6	0.0		Water Seal + pour flush		Flush and pour flush			95.0	77.6					
		to piped sewer system			3.6	0.0				to piped sewer system									
		to septic tank								to septic tank									
		to pit								to pit									
		to unknown place/ not sure/DK								to unknown place/ not sure/DK									
		to elsewhere								to elsewhere									
		Flush/toilets								Flush/toilets									
		to piped sewer system								to piped sewer system									
		to septic tank								to septic tank									
		to pit								to pit									
		to unknown place/ not sure/DK								to unknown place/ not sure/DK									
		to elsewhere								to elsewhere									
		Private flush/toilet								Private flush/toilet									
		to piped sewer system								to piped sewer system									
		to septic tank								to septic tank									
		to pit								to pit									
		to unknown place/ not sure/DK								to unknown place/ not sure/DK									
		to elsewhere								to elsewhere									
		Public/shared flush/toilet								Public/shared flush/toilet									
		to piped sewer system								to piped sewer system									
		to septic tank								to septic tank									
		to pit								to pit									
		to unknown place/ not sure/DK								to unknown place/ not sure/DK									
		to elsewhere								to elsewhere									
		Latrines								Latrines			2.6	15.2					
		Pour flush latrines								Pour flush latrines									
		to piped sewer system								to piped sewer system									
		to septic tank								to septic tank									
		to pit								to pit									
		to unknown place/ not sure/DK								to unknown place/ not sure/DK									
		to elsewhere								to elsewhere									
		Private pour flush latrine								Private pour flush latrine									
		to piped sewer system								to piped sewer system									
		to septic tank								to septic tank									
		to pit								to pit									
		to unknown place/ not sure/DK								to unknown place/ not sure/DK									
		to elsewhere								to elsewhere									
		Public/shared pour flush latrine								Public/shared pour flush latrine									
		to piped sewer system								to piped sewer system									
		to septic tank								to septic tank									
		to pit								to pit									
		to unknown place/ not sure/DK								to unknown place/ not sure/DK									
		to elsewhere								to elsewhere									
		Dry latrines								Dry latrines			2.6	15.2					
		Improved latrines								Improved latrines									
		Ventilated Improved Pit latrine								Ventilated Improved Pit latrine									
		Pit latrine with slab/covered latrine								Pit latrine with slab/covered latrine									
		Traditional latrine						Pit		Traditional latrine			2.4	15.2					
		Pit latrine without slab/open pit								Pit latrine without slab/open pit									
		Hanging toilet/hanging latrine								Hanging toilet/hanging latrine									
		Bucket latrine						Bucket		Bucket latrine			0.2	0.0					
		Private Latrines								Private Latrines									
		Ventilated Improved Pit latrine								Ventilated Improved Pit latrine									
		Pit latrine with slab/covered latrine								Pit latrine with slab/covered latrine									
		Traditional latrine								Traditional latrine									
		Pit latrine without slab/open pit								Pit latrine without slab/open pit									
		Hanging toilet/hanging latrine								Hanging toilet/hanging latrine									
		Bucket latrine								Bucket latrine									
		Public/shared Latrines								Public/shared Latrines									
		Ventilated Improved Pit latrine								Ventilated Improved Pit latrine									
		Pit latrine with slab/covered latrine								Pit latrine with slab/covered latrine									
		Traditional latrine								Traditional latrine									
		Pit latrine without slab/open pit								Pit latrine without slab/open pit									
		Hanging toilet/hanging latrine								Hanging toilet/hanging latrine									
		Bucket latrine								Bucket latrine									
		Composting toilets								Composting toilets									
		Composting toilet (private)								Composting toilet (private)									
		Composting toilet (shared)								Composting toilet (shared)									
		Population without household connections but served			87.2	80.0				Population without household connections but served									
		Other improved								Other improved									
		Other								Other									
		Other								Other									
		No facility, bush, field						None		No facility, bush, field			2.1	7.0					
		Other unimproved			9.3	20.0				Other unimproved			0.3	0.2					
		Other						Other		Other			0.3	0.2					
		Other								Other									
		DK/missing information								DK/missing information									
		Total			100.0	100.0				Total			100.0	100.0					
Calculations								Calculations											
Estimations								Estimations		Estimated pit considered improved based on WHS03			1.9	10.1					
										SC, based on WHS03			27.1	7.6					
Access to improved plus shared sanitation: 91% 80%					Access to improved sanitation: 97% 88%														
Access to sewerage connections: 4% 0%					Access to sewerage connections: 27% 8%														
Used for the estimates: No No					Used for the estimates: Yes Yes														
Used for the estimates: No No					Used for the estimates: Yes Yes														
Ratios		Shared improved facilities/all improved facilities						Ratios		Shared improved facilities/all improved facilities									
		Improved latrine / All latrines								Improved latrine / All latrines									
		Covered dry latrines / All dry latrines								Covered dry latrines / All dry latrines									
		VIP / All latrines								VIP / All latrines									
		Traditional latrines / All latrines								Traditional latrines / All latrines			94%	100%					
		Improved + traditional latrines / All latrines								Improved + traditional latrines / All latrines									
		Sewerage connection among flush/pour flush								Sewerage connection among flush/pour flush									
		Sewerage connection among flush								Sewerage connection among flush									
Number of people covered by the survey:					Number of people covered by the survey:														
Number of households covered by the survey:					Number of households covered by the survey:														
Total population: 5060 13048					Total population:														
Comments					Comments		Note: the sample is not representative for a few areas in the Northern and Eastern Provinces, which are not conducive for a survey												

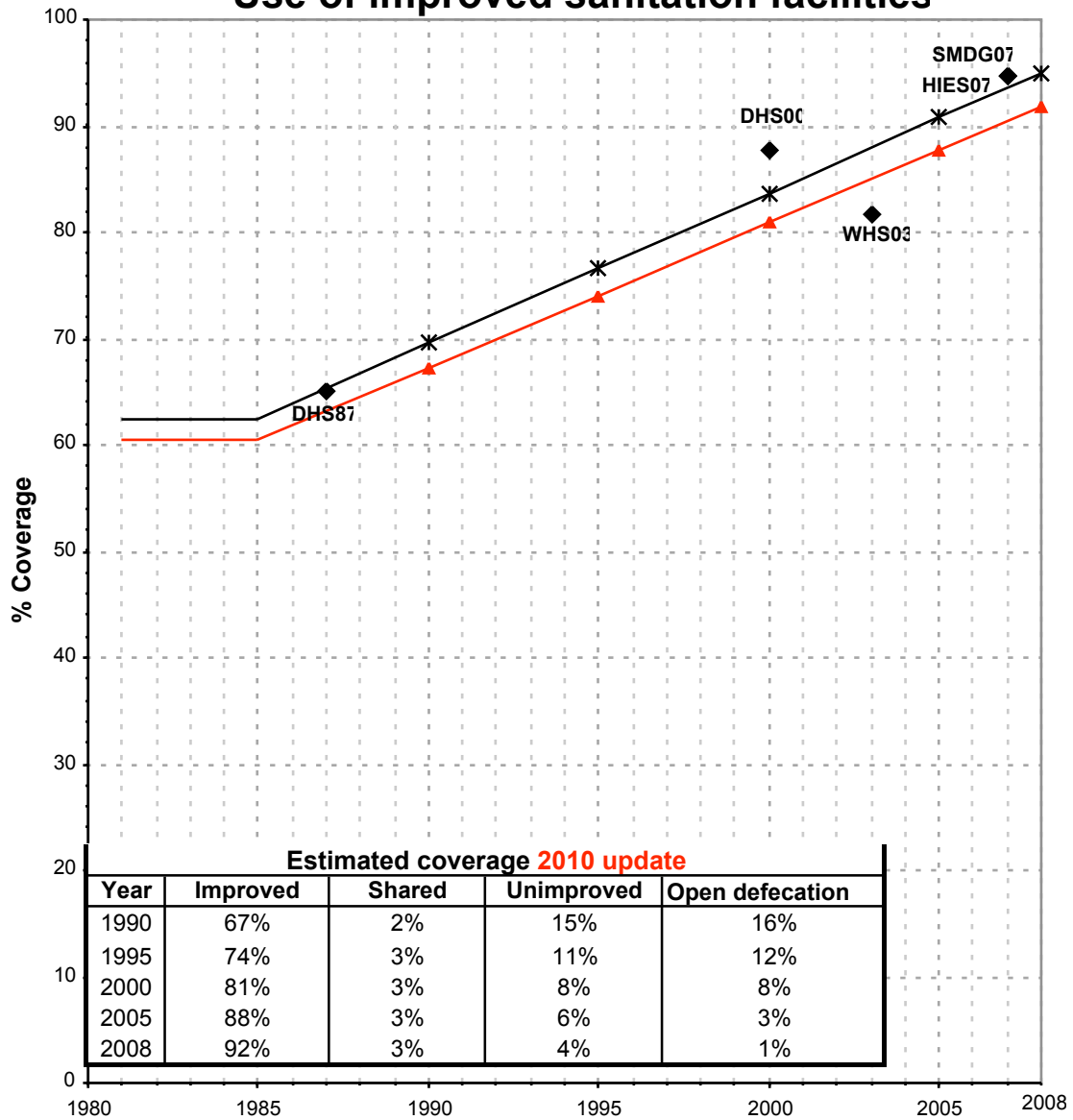
Sri Lanka			SANITATION															
			URBAN								RURAL							
			Sewer connection		Total		Open defecation		Shared		Sewer connection		Total		Open defecation		Shared	
Source	Code	Year	Used	Not used	Used	Not used	Used	Not used	Used	Not used	Used	Not used	Used	Not used	Used	Not used	Used	Not used
Demographic and Health Survey	DHS87	1987	22.8		90.2		4.8				3.7		65.1		18.9			
National water supply and Drainage Board	NWSDB92	1992		22.1		81.7		17.1				4.1		55.3		37.2		
Global Water Supply and Sanitation Assessment 2000.	JMP99	1999		3.6		90.7						0.0		80.0				
Demographic and Health Survey	DHS00	2000	27.1		96.9		2.1				7.6		87.7		7.0			
World Health Survey	WHS03	2003	25.1		93.8		1.4		7.3		6.9		81.8		4.2		3.3	
Country Report on Indicator for the Goals	CRI04	2004																
Census of population and Housing 2001	CEN01	2001																
Special Survey on Millennium Development Goals – 2006/07	SMDG07	2007			91.5								94.8					
Household Income and Expenditure Survey	HIES07	2007			95.3		3.8						94.7		3.0			
Demographic and Health Survey	DHS07	2007																

Sri Lanka - urban - Use of improved sanitation facilities



Used for the estimates
 * Estimates
 JMP 2010 estimate

Sri Lanka - rural - Use of improved sanitation facilities



Used for the estimates
 * Estimates
 JMP 2010 estimate

Sanitation

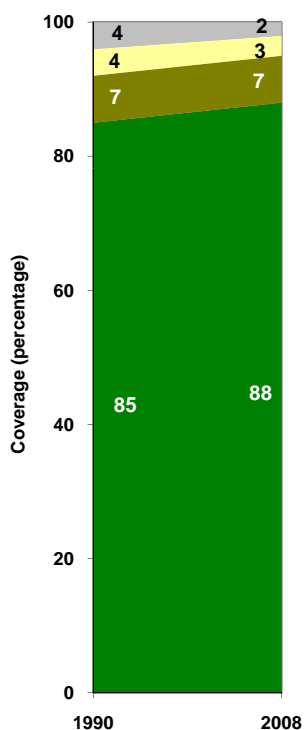
Sri Lanka	Sanitation coverage estimates					
	Urban (%)		Rural (%)		Total (%)	
	1990	2008	1990	2008	1990	2008
Improved facilities	85	88	67	92	70	91
Shared facilities	7	7	2	3	3	4
Unimproved facilities	4	3	15	4	13	4
Open defecation	4	2	16	1	14	1

Source: WHO/UNICEF JMP, 2010

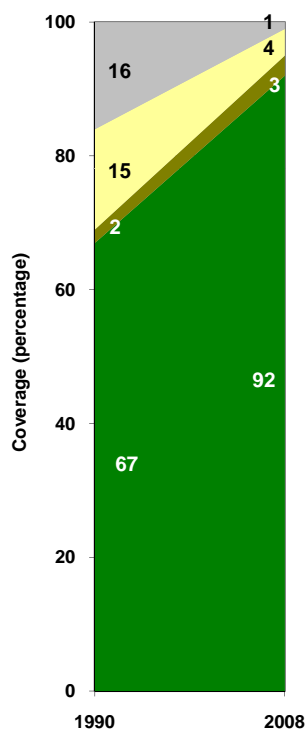
Sri Lanka	Urban		Rural		Total	
	1990	2008	1990	2008	1990	2008
Population (x1000)	2,974	3,022	14,317	17,038	17,290	20,061

Source: UN / Population Division, 2008

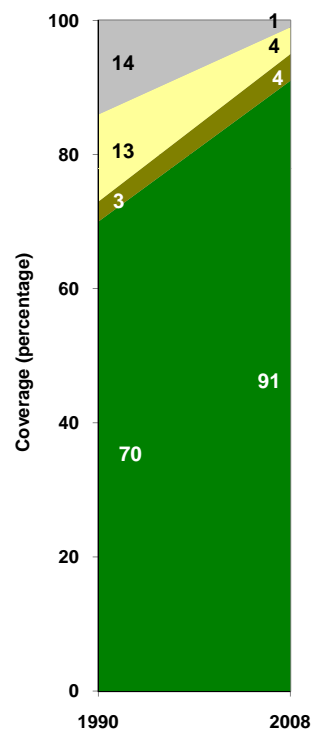
Urban sanitation trends



Rural sanitation trends



Total sanitation trends



- Improved facilities
- Shared facilities
- Unimproved facilities
- Open defecation

- Improved facilities
- Shared facilities
- Unimproved facilities
- Open defecation

- Improved facilities
- Shared facilities
- Unimproved facilities
- Open defecation