

**WHO / UNICEF**

**Joint Monitoring Programme**  
for Water Supply and Sanitation

Estimates for the use of

**Improved Drinking-Water Sources  
and Improved Sanitation Facilities**

Updated March 2010

[childinfo.org](http://childinfo.org)

Use of sanitation facilities		OHS94			South Africa			Use of sanitation facilities		OHS95			South Africa		
October Household Surveys					1994			October Household Surveys					1995		
Original denomination	Classification	Urban	Rural	Total	Original denomination	Classification	Urban	Rural	Total						
	<b>Flush and pour flush</b>	84.7	11.7	53.1		<b>Flush and pour flush</b>	86.4	16.2	58.6						
	to piped sewer system					to piped sewer system									
	to septic tank					to septic tank									
	to pit					to pit									
	to unknown place/ not sure/DK					to unknown place/ not sure/DK									
	to elsewhere					to elsewhere									
Flush toilet	<b>Flush/toilets</b>	84.7	11.7	53.1		<b>Flush/toilets</b>	86.4	16.2	58.6						
	to piped sewer system					to piped sewer system									
	to septic tank					to septic tank									
	to pit					to pit									
	to unknown place/ not sure/DK					to unknown place/ not sure/DK									
	to elsewhere					to elsewhere									
	<b>Private flush/toilet</b>				Flush toilet	<b>Private flush/toilet</b>	85.3	15.6	57.7						
	to piped sewer system					to piped sewer system									
	to septic tank					to septic tank									
	to pit					to pit									
	to unknown place/ not sure/DK					to unknown place/ not sure/DK									
	to elsewhere					to elsewhere									
	<b>Public/shared flush/toilet</b>				Flush toilet	<b>Public/shared flush/toilet</b>	1.1	0.6	0.9						
	to piped sewer system					to piped sewer system									
	to septic tank					to septic tank									
	to pit					to pit									
	to unknown place/ not sure/DK					to unknown place/ not sure/DK									
	to elsewhere					to elsewhere									
	<b>Latrines</b>	12.3	67.7	36.3		<b>Latrines</b>	12.2	63.8	32.5						
	<b>Pour flush latrines</b>					<b>Pour flush latrines</b>									
	to piped sewer system					to piped sewer system									
	to septic tank					to septic tank									
	to pit					to pit									
	to unknown place/ not sure/DK					to unknown place/ not sure/DK									
	to elsewhere					to elsewhere									
	<b>Private pour flush latrine</b>					<b>Private pour flush latrine</b>									
	to piped sewer system					to piped sewer system									
	to septic tank					to septic tank									
	to pit					to pit									
	to unknown place/ not sure/DK					to unknown place/ not sure/DK									
	to elsewhere					to elsewhere									
	<b>Public/shared pour flush latrine</b>					<b>Public/shared pour flush latrine</b>									
	to piped sewer system					to piped sewer system									
	to septic tank					to septic tank									
	to pit					to pit									
	to unknown place/ not sure/DK					to unknown place/ not sure/DK									
	to elsewhere					to elsewhere									
	<b>Dry latrines</b>	12.3	67.7	36.3		<b>Dry latrines</b>	12.2	63.8	32.5						
	<b>Improved latrines</b>					<b>Improved latrines</b>	0.1	2.2	0.9						
	Ventilated Improved Pit latrine					Ventilated Improved Pit latrine	0.1	2.2	0.9						
	Pit latrine with slab/covered latrine					Pit latrine with slab/covered latrine									
	Traditional latrine	5.9	66.1	32.0		Traditional latrine	5.0	59.7	26.6						
	Pit latrine without slab/open pit					Pit latrine without slab/open pit									
	Hanging toilet/hanging latrine					Hanging toilet/hanging latrine									
	Bucket latrine	6.4	1.6	4.3		Bucket latrine	7.1	1.6	4.9						
	Other					Other	0.0	0.3	0.1						
	<b>Private Latrines</b>				VIP	<b>Private Latrines</b>	11.0	55.6	28.6						
	Ventilated Improved Pit latrine				VIP	Ventilated Improved Pit latrine									
	Pit latrine with slab/covered latrine				Other Pit Latrine	Pit latrine with slab/covered latrine									
	Traditional latrine				Other Pit Latrine	Traditional latrine	4.6	54.2	24.2						
	Pit latrine without slab/open pit				Other Pit Latrine	Pit latrine without slab/open pit									
	Hanging toilet/hanging latrine				Other Pit Latrine	Hanging toilet/hanging latrine									
	Bucket latrine				Bucket Latrine	Bucket latrine	6.4	1.4	4.4						
	Other				Other	Other									
	<b>Public/shared Latrines</b>				VIP	<b>Public/shared Latrines</b>	1.2	6.2	3.9						
	Ventilated Improved Pit latrine				VIP	Ventilated Improved Pit latrine	0.1	2.2	0.9						
	Pit latrine with slab/covered latrine				Other Pit Latrine	Pit latrine with slab/covered latrine									
	Traditional latrine				Other Pit Latrine	Traditional latrine	0.4	5.5	2.4						
	Pit latrine without slab/open pit				Other Pit Latrine	Pit latrine without slab/open pit									
	Hanging toilet/hanging latrine				Other Pit Latrine	Hanging toilet/hanging latrine									
	Bucket latrine				Bucket Latrine	Bucket latrine	0.7	0.2	0.5						
	Other				Other	Other	0.0	0.3	0.1						
	<b>Composting toilets</b>					<b>Composting toilets</b>									
	Composting toilet (private)					Composting toilet (private)									
	Composting toilet (shared)					Composting toilet (shared)									
	<b>Other improved</b>	2.1	1.5	1.8		<b>Other improved</b>	0.8	1.6	1.1						
	Other	2.1	1.5	1.8	Chemical toilet	Other	0.5	1.3	0.8						
	Other				Chemical toilet	Other (shared)	0.3	0.3	0.3						
	<b>No facility, bush, field</b>	1.0	19.2	8.9	No facility	<b>No facility, bush, field</b>	0.6	18.5	7.7						
	<b>Other unimproved</b>					<b>Other unimproved</b>									
	Other					Other									
	Other					Other									
	<b>DK/missing information</b>					<b>DK/missing information</b>									
	<b>Total</b>	100.1	100.1	100.1		<b>Total</b>	100.0	100.1	99.9						
<b>Calculations</b>					<b>Calculations</b>										
	Pit latrine estimated improved based on WHS03	4.9	57.4			Pit latrine estimated improved based on WHS03	4.1	51.9							
<b>Estimations</b>					<b>Estimations</b>										
	SC, based on WHS03	84.1	11.5			SC, based on WHS03	85.8	15.9							
<b>Access to improved sanitation :</b>		<b>92%</b>	<b>71%</b>		<b>Access to improved sanitation :</b>		<b>91%</b>	<b>72%</b>							
<b>Access to sewerage connections :</b>		<b>84%</b>	<b>12%</b>		<b>Access to sewerage connections :</b>		<b>86%</b>	<b>16%</b>							
Used for the estimates		Yes	Yes		Used for the estimates		Yes	Yes							
Used for the estimates		Yes	Yes		Used for the estimates		Yes	Yes							
<b>Ratios</b>	Shared improved facilities/all improved facilities				<b>Ratios</b>	Shared improved facilities/all improved facilities									
	Improved latrine / All latrines					Improved latrine / All latrines	1%	3%	3%						
	Covered dry latrines / All dry latrines					Covered dry latrines / All dry latrines									
	VIP / All latrines					VIP / All latrines	1%	3%							
	Traditional latrines / All latrines	46%	96%	88%		Traditional latrines / All latrines	41%	94%	82%						
	Improved + traditional latrines / All latrines					Improved + traditional latrines / All latrines	42%	97%	85%						
Sewerage connection among flush/pour flush				Sewerage connection among flush/pour flush											
Sewerage connection among flush				Sewerage connection among flush											
Number of people covered by the survey:					Number of people covered by the survey:										
Number of households covered by the survey:					Number of households covered by the survey:										
Total population:					Total population:										
<b>Comments</b>					<b>Comments</b>										

Use of sanitation facilities		OHS96			South Africa			Use of sanitation facilities		OHS97			South Africa		
October Household Surveys					1996			October Household Surveys					1997		
Original denomination	Classification	Urban	Rural	Total	Original denomination	Classification	Urban	Rural	Total						
	<b>Flush and pour flush</b>	81.9	10.5	53.3		<b>Flush and pour flush</b>	84.5	25.4	61.3						
	to piped sewer system					to piped sewer system									
	to septic tank					to septic tank									
	to pit					to pit									
	to unknown place/ not sure/DK					to unknown place/ not sure/DK									
	to elsewhere					to elsewhere									
	<b>Flush/toilets</b>	81.9	10.5	53.3		<b>Flush/toilets</b>	84.5	25.4	61.3						
	to piped sewer system					to piped sewer system									
	to septic tank					to septic tank									
	to pit					to pit									
	to unknown place/ not sure/DK					to unknown place/ not sure/DK									
	to elsewhere					to elsewhere									
Flush toilet	<b>Private flush/toilet</b>	80.7	10.1	52.4	Flush toilet	<b>Private flush/toilet</b>	83.0	25.1	60.3						
	to piped sewer system					to piped sewer system									
	to septic tank					to septic tank									
	to pit					to pit									
	to unknown place/ not sure/DK					to unknown place/ not sure/DK									
	to elsewhere					to elsewhere									
Flush toilet	<b>Public/shared flush/toilet</b>	1.2	0.4	0.9	Flush toilet	<b>Public/shared flush/toilet</b>	1.5	0.3	1.0						
	to piped sewer system					to piped sewer system									
	to septic tank					to septic tank									
	to pit					to pit									
	to unknown place/ not sure/DK					to unknown place/ not sure/DK									
	to elsewhere					to elsewhere									
	<b>Latrines</b>	14.7	62.8	34.0		<b>Latrines</b>	13.0	54.5	29.4						
	<b>Pour flush latrines</b>					<b>Pour flush latrines</b>									
	to piped sewer system					to piped sewer system									
	to septic tank					to septic tank									
	to pit					to pit									
	to unknown place/ not sure/DK					to unknown place/ not sure/DK									
	to elsewhere					to elsewhere									
	<b>Private pour flush latrine</b>					<b>Private pour flush latrine</b>									
	to piped sewer system					to piped sewer system									
	to septic tank					to septic tank									
	to pit					to pit									
	to unknown place/ not sure/DK					to unknown place/ not sure/DK									
	to elsewhere					to elsewhere									
	<b>Public/shared pour flush latrine</b>					<b>Public/shared pour flush latrine</b>									
	to piped sewer system					to piped sewer system									
	to septic tank					to septic tank									
	to pit					to pit									
	to unknown place/ not sure/DK					to unknown place/ not sure/DK									
	to elsewhere					to elsewhere									
	<b>Dry latrines</b>	14.7	62.8	34.0		<b>Dry latrines</b>	13.0	54.5	29.4						
	<b>Improved latrines</b>					<b>Improved latrines</b>									
	Ventilated Improved Pit latrine					Ventilated Improved Pit latrine									
	Pit latrine with slab/covered latrine					Pit latrine with slab/covered latrine									
	Traditional latrine	8.4	61.7	29.7		Traditional latrine	7.6	53.5	25.7						
	Pit latrine without slab/open pit					Pit latrine without slab/open pit									
	Hanging toilet/hanging latrine					Hanging toilet/hanging latrine									
	Bucket latrine	6.3	1.1	4.3		Bucket latrine	5.4	1.0	3.7						
	Other					Other									
	<b>Private Latrines</b>	12.8	55.0	29.7		<b>Private Latrines</b>	10.8	44.8	24.2						
	Ventilated Improved Pit latrine					Ventilated Improved Pit latrine									
	Pit latrine with slab/covered latrine					Pit latrine with slab/covered latrine									
	Traditional latrine	7.2	53.9	25.9		Traditional latrine	6.2	44.1	21.1						
	Pit latrine without slab/open pit					Pit latrine without slab/open pit									
	Hanging toilet/hanging latrine					Hanging toilet/hanging latrine									
	Bucket latrine	5.6	1.1	3.8		Bucket latrine	4.6	0.7	3.1						
	Other					Other									
	<b>Public/shared Latrines</b>	1.9	7.8	4.3		<b>Public/shared Latrines</b>	2.2	9.7	5.2						
	Ventilated Improved Pit latrine					Ventilated Improved Pit latrine									
	Pit latrine with slab/covered latrine					Pit latrine with slab/covered latrine									
	Traditional latrine	1.2	7.8	3.8		Traditional latrine	1.4	9.4	4.6						
	Pit latrine without slab/open pit					Pit latrine without slab/open pit									
	Hanging toilet/hanging latrine					Hanging toilet/hanging latrine									
	Bucket latrine	0.7		0.5		Bucket latrine	0.8	0.3	0.6						
	Other					Other									
	<b>Composting toilets</b>					<b>Composting toilets</b>									
	Composting toilet (private)					Composting toilet (private)									
	Composting toilet (shared)					Composting toilet (shared)									
	<b>Other improved</b>	1.4	1.8	1.7		<b>Other improved</b>	0.8	0.5	0.8						
	Other	1.2	1.8	1.5		Other	0.6	0.5	0.6						
	Other (shared)	0.2		0.2		Other (shared)	0.2		0.2						
Chemical toilet	<b>No facility, bush, field</b>	2.0	24.5	11.0	Chemical toilet	<b>No facility, bush, field</b>	1.6	19.4	8.5						
Chemical toilet	<b>Other unimproved</b>				Chemical toilet	<b>Other unimproved</b>									
	Other					Other									
	Other					Other									
	<b>DK/missing information</b>					<b>DK/missing information</b>									
	<b>Total</b>	100.0	99.6	100.0		<b>Total</b>	99.9	99.8	100.0						
<b>Calculations</b>					<b>Calculations</b>										
	Pit latrine estimated improved based on WHS03	6.9	53.6			Pit latrine estimated improved based on WHS03	6.3	46.5							
<b>Estimations</b>					<b>Estimations</b>										
	SC, based on WHS03	81.3	10.3			SC, based on WHS03	83.9	25.0							
<b>Access to improved sanitation :</b>		<b>90%</b>	<b>66%</b>		<b>Access to improved sanitation :</b>		<b>92%</b>	<b>72%</b>							
<b>Access to sewerage connections :</b>		<b>81%</b>	<b>10%</b>		<b>Access to sewerage connections :</b>		<b>84%</b>	<b>25%</b>							
Used for the estimates		Yes	Yes		Used for the estimates		Yes	Yes							
Used for the estimates		Yes	Yes		Used for the estimates		Yes	Yes							
<b>Ratios</b>	Shared improved facilities/all improved facilities				<b>Ratios</b>	Shared improved facilities/all improved facilities									
	Improved latrine / All latrines					Improved latrine / All latrines									
	Covered dry latrines / All dry latrines					Covered dry latrines / All dry latrines									
	VIP / All latrines					VIP / All latrines									
	Traditional latrines / All latrines	57%	98%	87%		Traditional latrines / All latrines	58%	98%	87%						
	Improved + traditional latrines / All latrines					Improved + traditional latrines / All latrines									
Sewerage connection among flush/pour flush				Sewerage connection among flush/pour flush											
Sewerage connection among flush				Sewerage connection among flush											
Number of people covered by the survey:					Number of people covered by the survey:										
Number of households covered by the survey:					Number of households covered by the survey:										
Total population:					Total population:										
<b>Comments</b>					<b>Comments</b>										

Use of sanitation facilities		OHS98			South Africa			Use of sanitation facilities		DHS98			South Africa		
October Household Surveys					1998			Demographic and Health Survey					1998		
Original denomination	Classification	Urban	Rural	Total	Original denomination	Classification	Urban	Rural	Total						
	<b>Flush and pour flush</b>	81.8	11.4	53.4		<b>Flush and pour flush</b>	79.6	7.6	50.1						
	to piped sewer system					to piped sewer system									
	to septic tank					to septic tank									
	to pit					to pit									
	to unknown place/ not sure/DK					to unknown place/ not sure/DK									
	to elsewhere					to elsewhere									
	<b>Flush/toilets</b>	81.8	11.4	53.4		<b>Flush/toilets</b>	79.6	7.6	50.1						
	to piped sewer system					to piped sewer system									
	to septic tank					to septic tank									
	to pit					to pit									
	to unknown place/ not sure/DK					to unknown place/ not sure/DK									
	to elsewhere					to elsewhere									
Flush toilet	<b>Private flush/toilet</b>	79.7	11.0	52.0	Own flush toilet	<b>Private flush/toilet</b>	73.1	6.9	46.0						
	to piped sewer system					to piped sewer system									
	to septic tank					to septic tank									
	to pit					to pit									
	to unknown place/ not sure/DK					to unknown place/ not sure/DK									
	to elsewhere					to elsewhere									
Flush toilet	<b>Public/shared flush/toilet</b>	2.1	0.4	1.4	Shared Flush toilet	<b>Public/shared flush/toilet</b>	6.5	0.7	4.1						
	to piped sewer system					to piped sewer system									
	to septic tank					to septic tank									
	to pit					to pit									
	to unknown place/ not sure/DK					to unknown place/ not sure/DK									
	to elsewhere					to elsewhere									
	<b>Latrines</b>	15.7	62.4	33.9		<b>Latrines</b>	17.5	65.6	37.2						
	<b>Pour flush latrines</b>					<b>Pour flush latrines</b>									
	to piped sewer system					to piped sewer system									
	to septic tank					to septic tank									
	to pit					to pit									
	to unknown place/ not sure/DK					to unknown place/ not sure/DK									
	to elsewhere					to elsewhere									
	<b>Private pour flush latrine</b>					<b>Private pour flush latrine</b>									
	to piped sewer system					to piped sewer system									
	to septic tank					to septic tank									
	to pit					to pit									
	to unknown place/ not sure/DK					to unknown place/ not sure/DK									
	to elsewhere					to elsewhere									
	<b>Public/shared pour flush latrine</b>					<b>Public/shared pour flush latrine</b>									
	to piped sewer system					to piped sewer system									
	to septic tank					to septic tank									
	to pit					to pit									
	to unknown place/ not sure/DK					to unknown place/ not sure/DK									
	to elsewhere					to elsewhere									
	<b>Dry latrines</b>	15.7	62.4	33.9		<b>Dry latrines</b>	17.5	65.6	37.2						
	<b>Improved latrines</b>					<b>Improved latrines</b>	8.0	3.1	6.0						
	Ventilated Improved Pit latrine				VIP	Ventilated Improved Pit latrine	8.0	3.1	6.0						
	Pit latrine with slab/covered latrine					Pit latrine with slab/covered latrine									
	Traditional latrine	10.3	61.3	30.1	traditional latrine	Traditional latrine	9.5	62.5	31.2						
	Pit latrine without slab/open pit					Pit latrine without slab/open pit									
	Hanging toilet/hanging latrine					Hanging toilet/hanging latrine									
	Bucket latrine	5.4	0.6	3.5		Bucket latrine									
	Other	0.5	0.3	0.3		Other									
	<b>Private Latrines</b>	14.9	58.5	31.9		<b>Private Latrines</b>									
	Ventilated Improved Pit latrine					Ventilated Improved Pit latrine									
	Pit latrine with slab/covered latrine					Pit latrine with slab/covered latrine									
	Traditional latrine	9.5	57.4	28.1		Traditional latrine									
	Pit latrine without slab/open pit					Pit latrine without slab/open pit									
	Hanging toilet/hanging latrine					Hanging toilet/hanging latrine									
	Bucket latrine	5.4	0.6	3.5		Bucket latrine									
	Other	0.5	0.3	0.3		Other									
	<b>Public/shared Latrines</b>	0.8	3.9	2.0		<b>Public/shared Latrines</b>									
	Ventilated Improved Pit latrine					Ventilated Improved Pit latrine									
	Pit latrine with slab/covered latrine					Pit latrine with slab/covered latrine									
	Traditional latrine	0.8	3.9	2.0		Traditional latrine									
	Pit latrine without slab/open pit					Pit latrine without slab/open pit									
	Hanging toilet/hanging latrine					Hanging toilet/hanging latrine									
	Bucket latrine					Bucket latrine									
	Other					Other									
	<b>Composting toilets</b>					<b>Composting toilets</b>									
	Composting toilet (private)					Composting toilet (private)									
	Composting toilet (shared)					Composting toilet (shared)									
	<b>Other improved</b>		0.8	0.4		<b>Other improved</b>									
	Other		0.5	0.2		Other									
	Other (shared)		0.3	0.2		Other									
Chemical toilet	<b>No facility, bush, field</b>	2.1	27.8	12.1	No Facility	<b>No facility, bush, field</b>	2.0	25.6	11.6						
Chemical toilet	<b>Other unimproved</b>					<b>Other unimproved</b>	0.4	0.4	0.4						
	Other				Other	Other	0.4	0.4	0.4						
	Other				Other	Other									
No facility	<b>DK/missing information</b>				Missing	<b>DK/missing information</b>	0.6	0.7	0.7						
	<b>Total</b>	99.6	102.4	99.8		<b>Total</b>	100.1	99.9	100.0						
<b>Calculations</b>					<b>Calculations</b>										
	Pit latrine estimated improved based on WHS03	8.5	53.2			Pit latrine estimated improved based on WHS03	7.8	54.3							
<b>Estimations</b>					<b>Estimations</b>										
	SC, based on WHS03	81.2	11.2			SC, based on WHS03	79.0	7.5							
<b>Access to improved sanitation :</b>		<b>90%</b>	<b>65%</b>		<b>Access to improved sanitation :</b>		<b>95%</b>	<b>65%</b>							
<b>Access to sewerage connections :</b>		<b>81%</b>	<b>11%</b>		<b>Access to sewerage connections :</b>		<b>79%</b>	<b>7%</b>							
Used for the estimates		Yes	Yes		Used for the estimates		Yes	Yes							
Used for the estimates		Yes	Yes		Used for the estimates		Yes	Yes							
<b>Ratios</b>	Shared improved facilities/all improved facilities				<b>Ratios</b>	Shared improved facilities/all improved facilities									
	Improved latrine / All latrines					Improved latrine / All latrines	46%	5%	16%						
	Covered dry latrines / All dry latrines					Covered dry latrines / All dry latrines									
	VIP / All latrines					VIP / All latrines	46%	5%	84%						
	Traditional latrines / All latrines	66%	98%	89%		Traditional latrines / All latrines	54%	95%	84%						
	Improved + traditional latrines / All latrines					Improved + traditional latrines / All latrines	100%	100%	100%						
Sewerage connection among flush/pour flush				Sewerage connection among flush/pour flush											
Sewerage connection among flush				Sewerage connection among flush											
Number of people covered by the survey:					Number of people covered by the survey:										
Number of households covered by the survey:					Number of households covered by the survey:										
Total population:					Total population:										
<b>Comments</b>					<b>Comments</b>										

Use of sanitation facilities		OHS99			South Africa			Use of sanitation facilities		CEN01			South Africa				
October Household Surveys					1999			Census					2001				
10% micro dataset from IPUMS																	
Original denomination	Classification	Urban	Rural	Total	Original denomination	Classification	Urban	Rural	Total	Original denomination	Classification	Urban	Rural	Total			
	<b>Flush and pour flush</b>	81.7	14.5	55.0		<b>Flush and pour flush</b>	77.8	9.5			<b>Flush and pour flush</b>	77.8	9.5				
	to piped sewer system					to piped sewer system					to piped sewer system						
	to septic tank					to septic tank					to septic tank	75.4	6.7				
	to pit					to pit					to pit	2.4	2.8				
	to unknown place/ not sure/DK					to unknown place/ not sure/DK					to unknown place/ not sure/DK						
	to elsewhere					to elsewhere					to elsewhere						
	<b>Flush/toilets</b>	81.7	14.5	55.0		<b>Flush/toilets</b>	77.8	9.5			<b>Flush/toilets</b>	77.8	9.5				
	to piped sewer system					Flush toilet (connected to sewerage system)					to piped sewer system						
	to septic tank					Flush toilet (with septic tank)					to septic tank	75.4	6.7				
	to pit										to pit	2.4	2.8				
	to unknown place/ not sure/DK										to unknown place/ not sure/DK						
	to elsewhere										to elsewhere						
Flush toilet	<b>Private flush/toilet</b>	80.5	13.5	53.9		<b>Private flush/toilet</b>					<b>Private flush/toilet</b>						
	to piped sewer system					to piped sewer system					to piped sewer system						
	to septic tank					to septic tank					to septic tank						
	to pit					to pit					to pit						
	to unknown place/ not sure/DK					to unknown place/ not sure/DK					to unknown place/ not sure/DK						
	to elsewhere					to elsewhere					to elsewhere						
Flush toilet	<b>Public/shared flush/toilet</b>	1.2	1.0	1.1		<b>Public/shared flush/toilet</b>					<b>Public/shared flush/toilet</b>						
	to piped sewer system					to piped sewer system					to piped sewer system						
	to septic tank					to septic tank					to septic tank						
	to pit					to pit					to pit						
	to unknown place/ not sure/DK					to unknown place/ not sure/DK					to unknown place/ not sure/DK						
	to elsewhere					to elsewhere					to elsewhere						
	<b>Latrines</b>	16.2	64.0	35.1		<b>Latrines</b>	16.8	59.4			<b>Latrines</b>	16.8	59.4				
	<b>Pour flush latrines</b>					<b>Pour flush latrines</b>					<b>Pour flush latrines</b>						
	to piped sewer system					to piped sewer system					to piped sewer system						
	to septic tank					to septic tank					to septic tank						
	to pit					to pit					to pit						
	to unknown place/ not sure/DK					to unknown place/ not sure/DK					to unknown place/ not sure/DK						
	to elsewhere					to elsewhere					to elsewhere						
	<b>Private pour flush latrine</b>					<b>Private pour flush latrine</b>					<b>Private pour flush latrine</b>						
	to piped sewer system					to piped sewer system					to piped sewer system						
	to septic tank					to septic tank					to septic tank						
	to pit					to pit					to pit						
	to unknown place/ not sure/DK					to unknown place/ not sure/DK					to unknown place/ not sure/DK						
	to elsewhere					to elsewhere					to elsewhere						
	<b>Public/shared pour flush latrine</b>					<b>Public/shared pour flush latrine</b>					<b>Public/shared pour flush latrine</b>						
	to piped sewer system					to piped sewer system					to piped sewer system						
	to septic tank					to septic tank					to septic tank						
	to pit					to pit					to pit						
	to unknown place/ not sure/DK					to unknown place/ not sure/DK					to unknown place/ not sure/DK						
	to elsewhere					to elsewhere					to elsewhere						
	<b>Dry latrines</b>	16.2	64.0	35.1		<b>Dry latrines</b>	16.8	59.4			<b>Dry latrines</b>	16.8	59.4				
	<b>Improved latrines</b>	2.2	7.2	4.2		<b>Improved latrines</b>	2.6	11.1			<b>Improved latrines</b>	2.6	11.1				
	Ventilated Improved Pit latrine	2.2	7.2	4.2	Pit latrine with ventilation (VIP)	Ventilated Improved Pit latrine	2.6	11.1			Ventilated Improved Pit latrine	2.6	11.1				
	Pit latrine with slab/covered latrine					Pit latrine with slab/covered latrine					Pit latrine with slab/covered latrine						
	Traditional latrine	8.3	53.2	26.1	Pit latrine without ventilation	Traditional latrine	8.5	47.0			Traditional latrine	8.5	47.0				
	Pit latrine without slab/open pit					Pit latrine without slab/open pit					Pit latrine without slab/open pit						
	Hanging toilet/hanging latrine					Hanging toilet/hanging latrine					Hanging toilet/hanging latrine						
	Bucket latrine	4.9	0.6	3.2	Bucket latrine	Bucket latrine	5.7	1.3			Bucket latrine	5.7	1.3				
	Other	0.8	3.0	1.6		Other					Other						
	<b>Private Latrines</b>	12.2	48.9	28.8		<b>Private Latrines</b>					<b>Private Latrines</b>						
	Ventilated Improved Pit latrine	2.0	6.2	3.7		Ventilated Improved Pit latrine					Ventilated Improved Pit latrine						
	Pit latrine with slab/covered latrine					Pit latrine with slab/covered latrine					Pit latrine with slab/covered latrine						
	Traditional latrine	6.5	42.3	20.7		Traditional latrine					Traditional latrine						
	Pit latrine without slab/open pit					Pit latrine without slab/open pit					Pit latrine without slab/open pit						
	Hanging toilet/hanging latrine					Hanging toilet/hanging latrine					Hanging toilet/hanging latrine						
	Bucket latrine	3.7	0.4	2.4		Bucket latrine					Bucket latrine						
	Other					Other					Other						
	<b>Public/shared Latrines</b>	4.0	15.1	8.3		<b>Public/shared Latrines</b>					<b>Public/shared Latrines</b>						
	Ventilated Improved Pit latrine	0.2	1.0	0.5		Ventilated Improved Pit latrine					Ventilated Improved Pit latrine						
	Pit latrine with slab/covered latrine					Pit latrine with slab/covered latrine					Pit latrine with slab/covered latrine						
	Traditional latrine	1.8	10.9	5.4		Traditional latrine					Traditional latrine						
	Pit latrine without slab/open pit					Pit latrine without slab/open pit					Pit latrine without slab/open pit						
	Hanging toilet/hanging latrine					Hanging toilet/hanging latrine					Hanging toilet/hanging latrine						
	Bucket latrine	1.2	0.2	0.8		Bucket latrine					Bucket latrine						
	Other	0.8	3.0	1.6		Other					Other						
	<b>Composting toilets</b>					<b>Composting toilets</b>					<b>Composting toilets</b>						
	Composting toilet (private)					Composting toilet (private)					Composting toilet (private)						
	Composting toilet (shared)					Composting toilet (shared)					Composting toilet (shared)						
	<b>Other improved</b>	0.3	0.8	0.5		<b>Other improved</b>	1.2	3.4			<b>Other improved</b>	1.2	3.4				
	Other	0.2	0.5	0.3	Chemical toilet	Other					Other						
	Other	0.1	0.3	0.2		Other					Other						
Chemical toilet	<b>No facility, bush, field</b>	1.9	20.8	9.4	None	<b>No facility, bush, field</b>	4.2	27.7			<b>No facility, bush, field</b>	4.2	27.7				
Chemical toilet	<b>Other unimproved</b>					<b>Other unimproved</b>					<b>Other unimproved</b>						
	Other					Other					Other						
	Other					Other					Other						
No facility	<b>DK/missing information</b>					<b>DK/missing information</b>					<b>DK/missing information</b>						
	<b>Total</b>	100.1	100.1	100.0		<b>Total</b>	100.0	100.0			<b>Total</b>	100.0	100.0				
<b>Calculations</b>						<b>Calculations</b>											
	Pit latrine estimated improved based on WHS03	6.8	46.2			Pit latrine estimated improved based on WHS03	7.0	40.8			Pit latrine estimated improved based on WHS03	7.0	40.8				
<b>Estimations</b>						<b>Estimations</b>											
	SC, based on WHS03	81.1	14.3														
<b>Access to improved sanitation :</b>		<b>91%</b>	<b>69%</b>		<b>Access to improved sanitation :</b>		<b>89%</b>	<b>65%</b>		<b>Access to improved sanitation :</b>		<b>89%</b>	<b>65%</b>				
<b>Access to sewerage connections :</b>		<b>81%</b>	<b>14%</b>		<b>Access to sewerage connections :</b>		<b>75%</b>	<b>7%</b>		<b>Access to sewerage connections :</b>		<b>75%</b>	<b>7%</b>				
Used for the estimates:		Yes	Yes		Used for the estimates:		No	No		Used for the estimates:		No	No				
Used for the estimates:		Yes	Yes		Used for the estimates:		No	No		Used for the estimates:		No	No				
<b>Ratios</b>	Shared improved facilities/all improved facilities	14%	11%	12%	<b>Ratios</b>	Shared improved facilities/all improved facilities	15%	19%		<b>Ratios</b>	Shared improved facilities/all improved facilities	15%	19%				
	Improved latrine / All latrines					Improved latrine / All latrines					Improved latrine / All latrines						
	Covered dry latrines / All dry latrines					VIP / All latrines					VIP / All latrines						
	VIP / All latrines	14%	11%			Traditional latrines / All latrines	51%	83%	74%		Traditional latrines / All latrines	51%	79%	74%	Traditional latrines / All latrines	51%	79%
	Traditional latrines / All latrines	51%	83%	74%		Improved + traditional latrines / All latrines	65%	94%	86%		Improved + traditional latrines / All latrines	66%	96%	86%	Improved + traditional latrines / All latrines	66%	96%
	Improved + traditional latrines / All latrines	65%	94%	86%		Sewerage connection among flush/pour flush	96.9	70.5			Sewerage connection among flush/pour flush	96.9	70.5		Sewerage connection among flush/pour flush	96.9	70.5
	Sewerage connection among flush/pour flush	96.9	70.5			Sewerage connection among flush	96.9	70.5			Sewerage connection among flush	96.9	70.5		Sewerage connection among flush	96.9	70.5
	Number of people covered by the survey:					Number of people covered by the survey:					Number of people covered by the survey:						
	Number of households covered by the survey:					Number of households covered by the survey:					Number of households covered by the survey:						
	Total population:					Total population:					Total population:						
<b>Comments</b>					<b>Comments</b>					<b>Comments</b>							





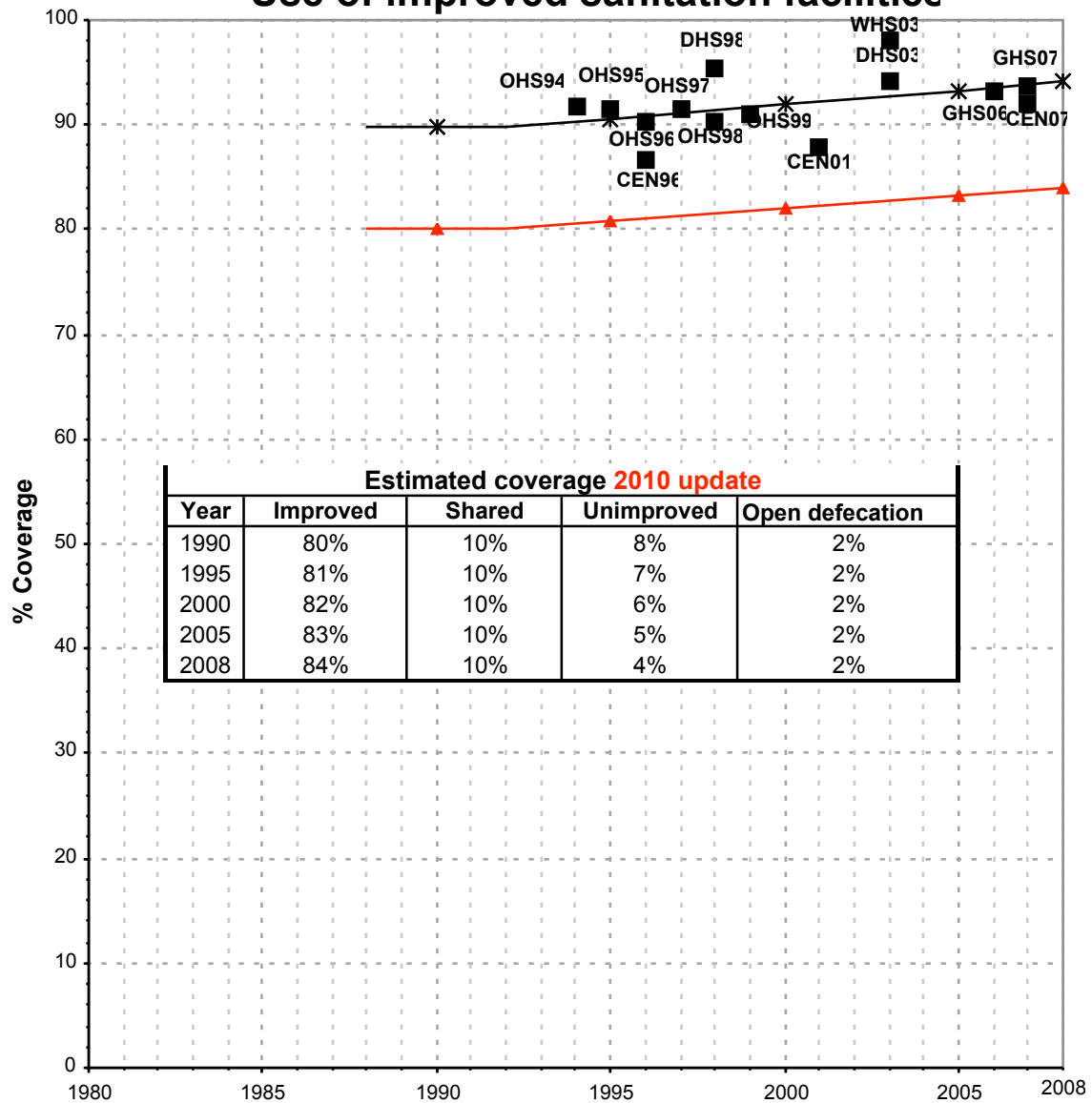






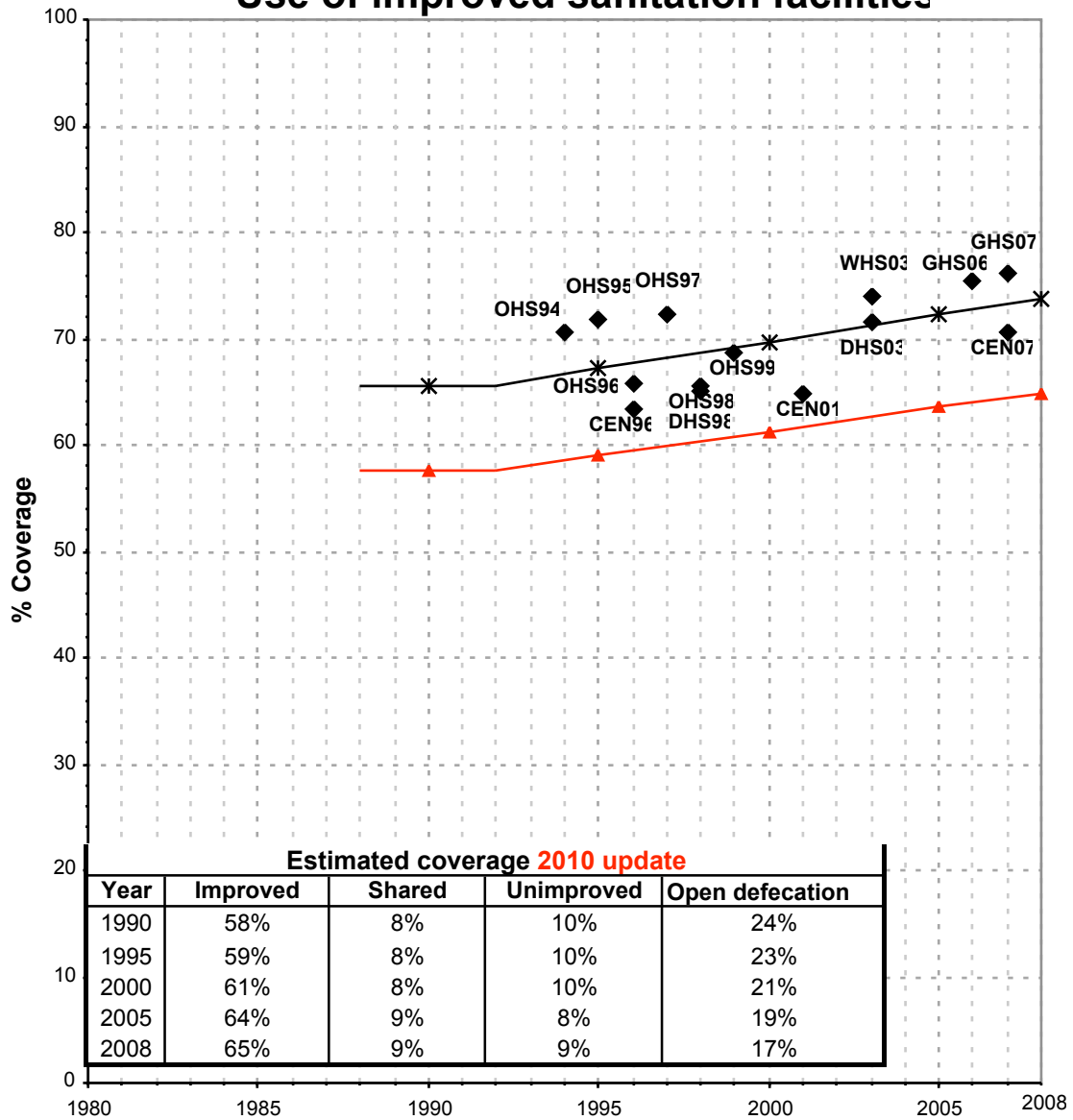
South Africa			SANITATION															
			URBAN								RURAL							
			Sewer connection		Total		Open defecation		Shared		Sewer connection		Total		Open defecation		Shared	
Source	Code	Year	Used	Not used	Used	Not used	Used	Not used	Used	Not used	Used	Not used	Used	Not used	Used	Not used	Used	Not used
October Household Surveys	OHS94	1994	84.1		91.7		1.0				11.5		70.6		19.2			
October Household Surveys	OHS95	1995	85.8		91.4		0.6				15.9		71.9		18.5			
October Household Surveys	OHS96	1996	81.3		90.2		2.0				10.3		65.9		24.5			
October Household Surveys	OHS97	1997	83.9		91.6		1.6				25.0		72.4		19.4			
October Household Surveys	OHS98	1998	81.2		90.3		2.1				11.2		65.4		27.8			
Demographic and Health Survey	DHS98	1998	79.0		95.4		2.0				7.5		65.0		25.6			
October Household Surveys	OHS99	1999	81.1		91.0		1.9				14.3		68.7		20.8			
Census	CEN01	2001		75.4		88.6		4.2				6.7		64.8		27.7		
Census	CEN01	2001	74.4		87.8		5.1				7.1		64.9		27.7			
World Health Survey	WHS03	2003	92.9		98.1		0.3		28.1		30.6		74.1		13.0		28.2	
Recensement général de la population	CEN96	1996			86.6		2.9						63.4		25.6			
Recensement général de la population	CEN07	2007	78.1		92.1		2.7				7.5		70.7		21.7			
General Household Survey	GHS06	2006	72.5		93.2		1.8		2.1		4.3		75.5		15.9		3.3	
General Household Survey	GHS07	2007	78.2		93.7		1.4		2.0		5.1		76.0		15.6		4.8	
Demographic and Health Survey	DHS03	2003	74.8		94.1		2.3				5.5		71.6		18.5			

## South Africa - urban - Use of improved sanitation facilities



Used for the estimates  
  \* Estimates  
  JMP 2010 estimate

## South Africa - rural - Use of improved sanitation facilities



◆ Used for the estimates    ✱ Estimates    ▲ JMP 2010 estimate

# Sanitation

South Africa	Sanitation coverage estimates					
	Urban (%)		Rural (%)		Total (%)	
	1990	2008	1990	2008	1990	2008
Improved facilities	80	84	58	65	69	77
Shared facilities	10	10	8	9	9	10
Unimproved facilities	8	4	10	9	9	5
Open defecation	2	2	24	17	13	8

Source: WHO/UNICEF JMP, 2010

South Africa	Urban		Rural		Total	
	1990	2008	1990	2008	1990	2008
Population (x1000)	19,121	30,164	17,624	19,503	36,745	49,668

Source: UN / Population Division, 2008

