

WHO / UNICEF

Joint Monitoring Programme
for Water Supply and Sanitation

Estimates for the use of

**Improved Drinking-Water Sources
and Improved Sanitation Facilities**

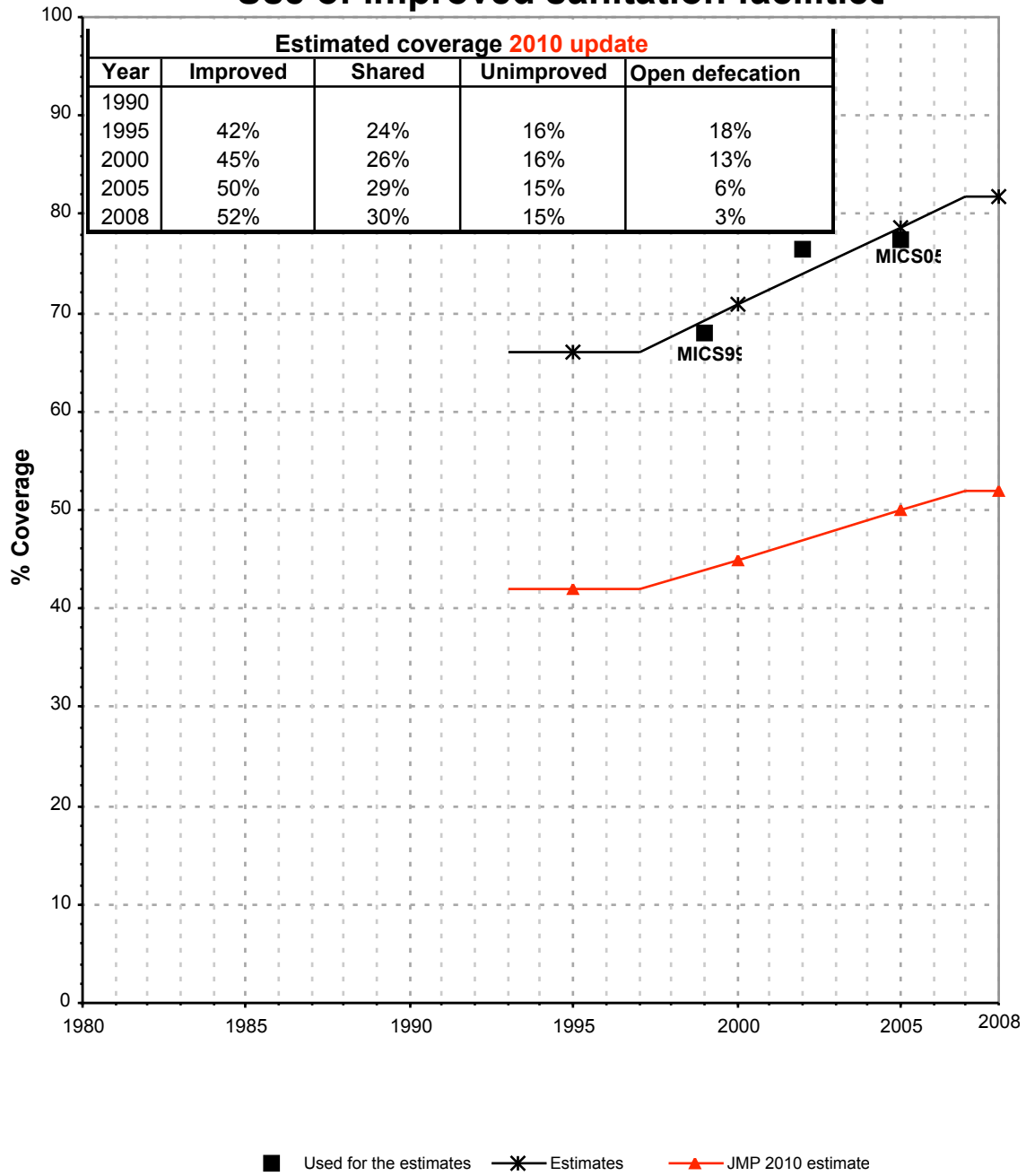
Updated March 2010

childinfo.org

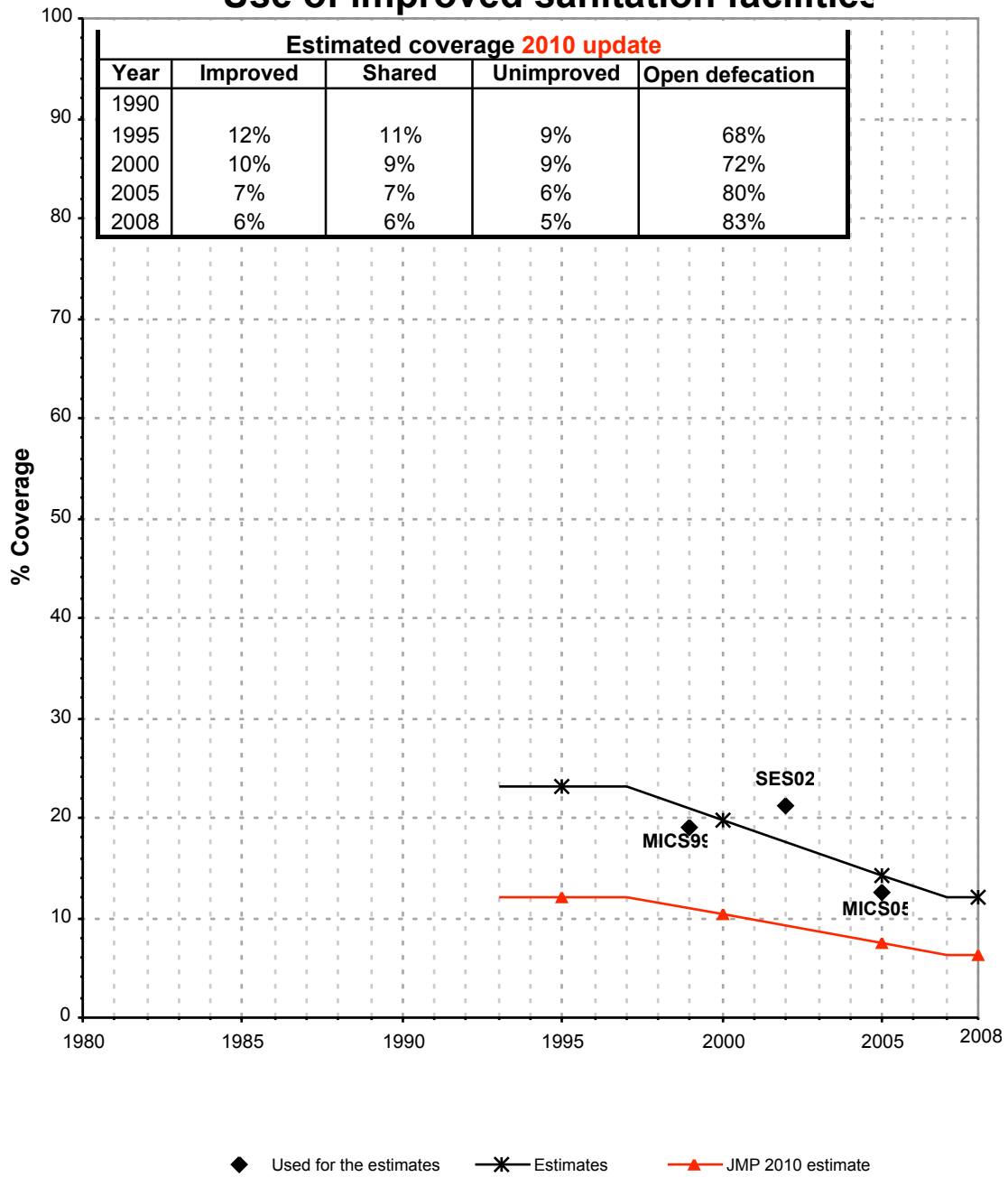
Use of sanitation facilities		MICS99			Somalia			Use of sanitation facilities		SES02			Somalia		
Multiple Indicator Cluster Survey					1999			Socio-Economic-Survey					2002		
Original denomination	Classification	Urban	Rural	Total	Original denomination	Classification	Urban	Rural	Total						
	Flush and pour flush	3.4	0.2			Flush and pour flush	13.3	3.2	6.5						
	to piped sewer system					to piped sewer system									
	to septic tank					to septic tank									
	to pit					to pit									
	to unknown place/ not sure/DK					to unknown place/ not sure/DK									
	to elsewhere					to elsewhere									
Flush to sewage system or septic tank	Flush/toilets	1.1	0.1			Flush/toilets	13.3	3.2	6.5						
	to piped sewer system					to piped sewer system									
	to septic tank					to septic tank									
	to pit					to pit									
	to unknown place/ not sure/DK					to unknown place/ not sure/DK									
	to elsewhere					to elsewhere									
	Private flush/toilet				Water Closet	Private flush/toilet	6.0	0.2	2.1						
	to piped sewer system					to piped sewer system									
	to septic tank					to septic tank									
	to pit					to pit									
	to unknown place/ not sure/DK					to unknown place/ not sure/DK									
	to elsewhere					to elsewhere									
	Public/shared flush/toilet				Public toilet	Public/shared flush/toilet	7.3	3.0	4.4						
	to piped sewer system					to piped sewer system									
	to septic tank					to septic tank									
	to pit					to pit									
	to unknown place/ not sure/DK					to unknown place/ not sure/DK									
	to elsewhere					to elsewhere									
	Latrines	81.9	25.7			Latrines	79.7	25.0	43.3						
Pour flush toilet	Pour flush latrines	2.3	0.1			Pour flush latrines									
	to piped sewer system					to piped sewer system									
	to septic tank					to septic tank									
	to pit					to pit									
	to unknown place/ not sure/DK					to unknown place/ not sure/DK									
	to elsewhere					to elsewhere									
	Private pour flush latrine					Private pour flush latrine									
	to piped sewer system					to piped sewer system									
	to septic tank					to septic tank									
	to pit					to pit									
	to unknown place/ not sure/DK					to unknown place/ not sure/DK									
	to elsewhere					to elsewhere									
	Public/shared pour flush latrine					Public/shared pour flush latrine									
	to piped sewer system					to piped sewer system									
	to septic tank					to septic tank									
	to pit					to pit									
	to unknown place/ not sure/DK					to unknown place/ not sure/DK									
	to elsewhere					to elsewhere									
	Dry latrines	79.6	25.6		Pit latrine	Dry latrines	79.7	25.0	43.3						
	Improved latrines	6.6	1.6			Improved latrines									
	Ventilated Improved Pit latrine					Ventilated Improved Pit latrine									
	Pit latrine with slab/covered latrine	6.6	1.6			Pit latrine with slab/covered latrine									
	Traditional latrine	73.0	24.0			Traditional latrine									
Improved pit latrine	Pit latrine without slab/open pit	0.0	0.0			Pit latrine without slab/open pit									
Traditional pit latrine	Hanging toilet/hanging latrine					Hanging toilet/hanging latrine									
Open pit	Bucket latrine	0.0	0.0			Bucket latrine									
Bucket	Other					Other									
	Private Latrines					Private Latrines									
	Ventilated Improved Pit latrine					Ventilated Improved Pit latrine									
	Pit latrine with slab/covered latrine					Pit latrine with slab/covered latrine									
	Traditional latrine					Traditional latrine									
	Pit latrine without slab/open pit					Pit latrine without slab/open pit									
	Hanging toilet/hanging latrine					Hanging toilet/hanging latrine									
	Bucket latrine					Bucket latrine									
	Other					Other									
	Public/shared Latrines					Public/shared Latrines									
	Ventilated Improved Pit latrine					Ventilated Improved Pit latrine									
	Pit latrine with slab/covered latrine					Pit latrine with slab/covered latrine									
	Traditional latrine					Traditional latrine									
	Pit latrine without slab/open pit					Pit latrine without slab/open pit									
	Hanging toilet/hanging latrine					Hanging toilet/hanging latrine									
	Bucket latrine					Bucket latrine									
	Other					Other									
	Composting toilets					Composting toilets									
	Composting toilet (private)					Composting toilet (private)									
	Composting toilet (shared)					Composting toilet (shared)									
	Other improved					Other improved									
	Other					Other									
	Other					Other									
None	No facility, bush, field	16.7	73.4		Open space/ground	No facility, bush, field	6.5	70.5	49.1						
	Other unimproved	0.3	0.9			Other unimproved									
	Other	0.3	0.9			Other									
	Other					Other									
	DK/missing information				No response	DK/missing information	0.5	1.3	1.1						
	Total	100.0	100.1			Total	100.0	100.0	100.0						
Calculations						Calculations									
	traditional latrines considered improved based on ratio MICS99	57.9	17.3			traditional latrines considered improved based on ratio MICS99	63.3	18.0							
Estimations						Estimations									
	SC, based on MICS05	1.0	0.1			SC, based on MICS05	12.3	3.2							
Access to improved sanitation :		68%	19%		Access to improved sanitation :		77%	21%							
Access to sewerage connections :		1%	0%		Access to sewerage connections :		12%	3%							
Used for the estimates		Yes	Yes		Used for the estimates		Yes	Yes							
Used for the estimates		Yes	Yes		Used for the estimates		Yes	Yes							
Ratios	Shared improved facilities/all improved facilities				Ratios	Shared improved facilities/all improved facilities									
	Improved latrine / All latrines	11%	7%			Improved latrine / All latrines									
	Covered dry latrines / All dry latrines	8%	6%			Covered dry latrines / All dry latrines									
	VIP / All latrines					VIP / All latrines									
	Traditional latrines / All latrines	89%	93%			Traditional latrines / All latrines									
	Improved + traditional latrines / All latrines	100%	100%			Improved + traditional latrines / All latrines									
Sewerage connection among flush/pour flush					Sewerage connection among flush/pour flush										
Sewerage connection among flush					Sewerage connection among flush										
Number of people covered by the survey:					Number of people covered by the survey:										
Number of households covered by the survey:					Number of households covered by the survey:										
Total population:					Total population:										
Comments					Comments										

Somalia			SANITATION															
			URBAN								RURAL							
			Sewer connection		Total		Open defecation		Shared		Sewer connection		Total		Open defecation		Shared	
Source	Code	Year	Used	Not used	Used	Not used	Used	Not used	Used	Not used	Used	Not used	Used	Not used	Used	Not used	Used	Not used
Multiple Indicator Cluster Survey	MICS99	1999	1.0		67.9		16.7				0.1		19.1		73.4			
Socio-Economic-Survey	SES02	2002	12.3		76.6		6.5				3.2		21.2		70.5			
Multiple Indicator Cluster Survey	MICS05	2005	20.6		77.4		7.6		36.4		0.2		12.5		82.2		48.0	

Somalia - urban - Use of improved sanitation facilities



Somalia - rural - Use of improved sanitation facilities



Sanitation

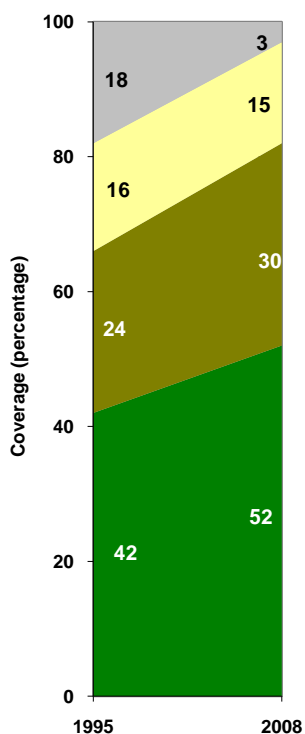
Somalia	Sanitation coverage estimates					
	Urban (%)		Rural (%)		Total (%)	
	1995	2008	1995	2008	1995	2008
Improved facilities	42	52	12	6	21	23
Shared facilities	24	30	11	6	15	15
Unimproved facilities	16	15	9	5	12	8
Open defecation	18	3	68	83	52	54

Source: WHO/UNICEF JMP, 2010

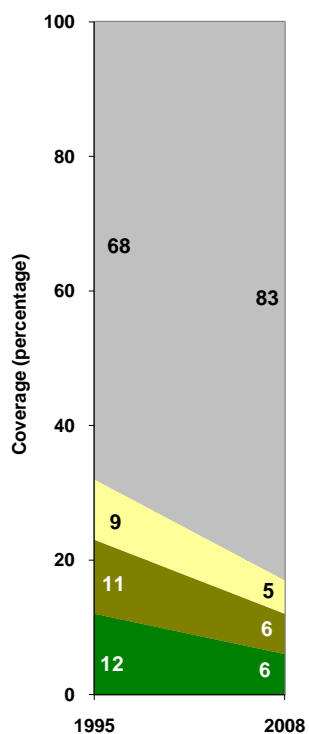
Somalia	Urban		Rural		Total	
	1995	2008	1995	2008	1995	2008
Population (x1000)	2,049	3,258	4,472	5,668	6,521	8,926

Source: UN / Population Division, 2008

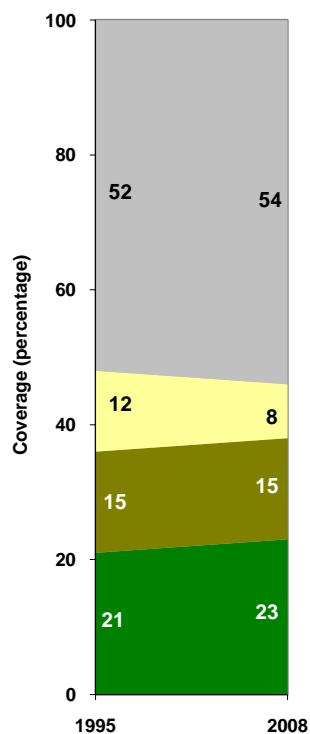
Urban sanitation trends



Rural sanitation trends



Total sanitation trends



■ Improved facilities
■ Shared facilities
■ Unimproved facilities
■ Open defecation

■ Improved facilities
■ Shared facilities
■ Unimproved facilities
■ Open defecation

■ Improved facilities
■ Shared facilities
■ Unimproved facilities
■ Open defecation