

WHO / UNICEF

Joint Monitoring Programme
for Water Supply and Sanitation

Estimates for the use of

**Improved Drinking-Water Sources
and Improved Sanitation Facilities**

Updated March 2010

childinfo.org

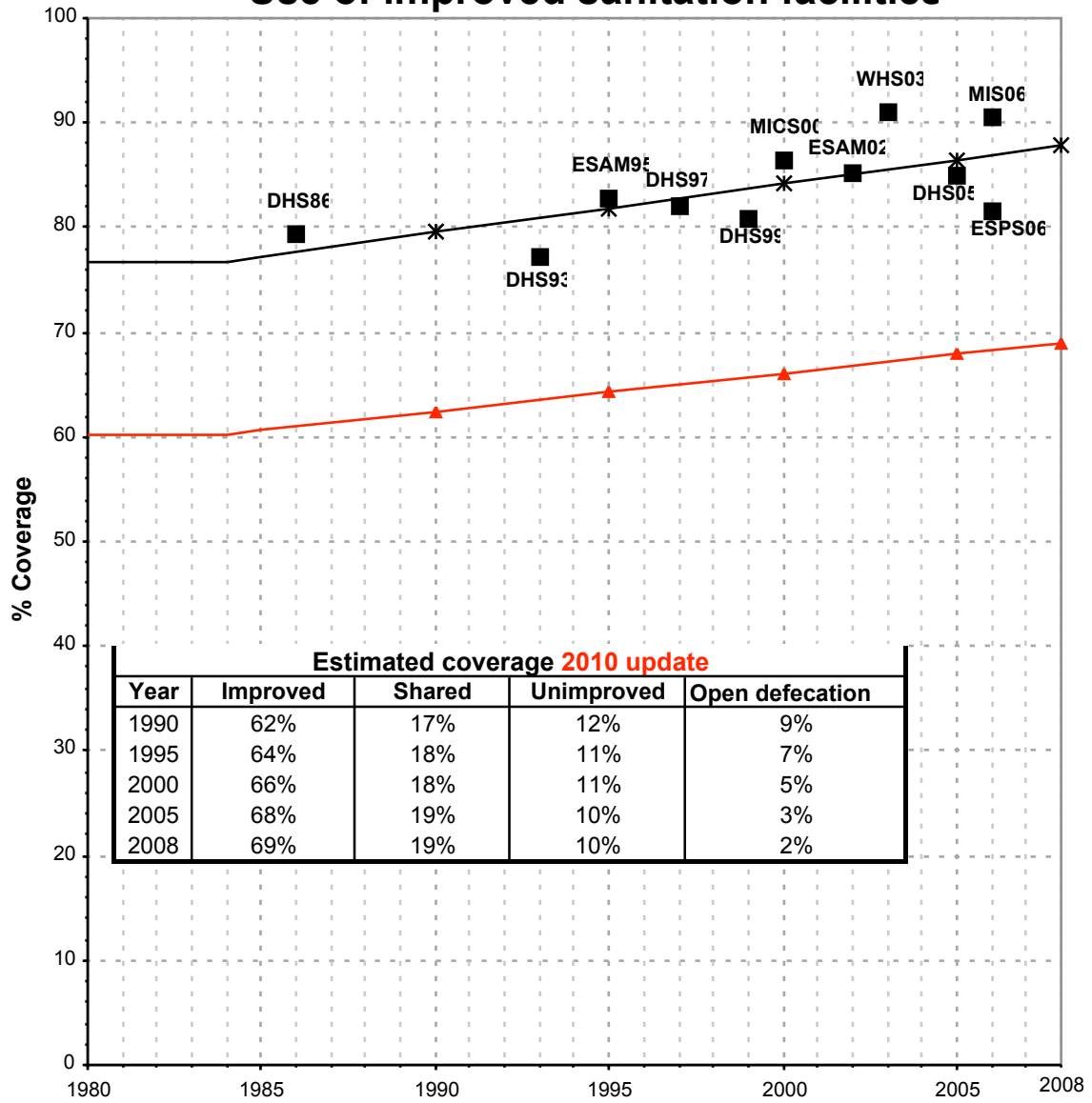
Use of sanitation facilities		DHS86			Senegal			Use of sanitation facilities		CEN88			Senegal		
Demographic and Health Survey					1986			National census as recorded on the Global Water Supply and Sanitation Assessment 2000. Water Supply and Sanitation Sector Questionnaire - 1999.					1988		
Original denomination	Classification	Urban	Rural	Total	Original denomination	Classification	Urban	Rural	Total						
WC	Flush and pour flush	22.6	0.1		Sewerage connection Septic tank	Flush and pour flush	70.7	12.6							
	to piped sewer system					to piped sewer system	18.3	0.0							
	to septic tank					to septic tank	48.5	11.9							
	to pit					to pit									
	to unknown place/ not sure/DK					to unknown place/ not sure/DK									
	to elsewhere					to elsewhere									
	Flush/toilets	22.6	0.1			Flush/toilets	70.7	12.6							
	to piped sewer system					to piped sewer system	18.3	0.0							
	to septic tank					to septic tank	48.5	11.9							
	to pit					to pit									
to unknown place/ not sure/DK				to unknown place/ not sure/DK											
to elsewhere				to elsewhere											
Private flush/toilet				Private flush/toilet											
to piped sewer system				to piped sewer system											
to septic tank				to septic tank											
to pit				to pit											
to unknown place/ not sure/DK				to unknown place/ not sure/DK											
to elsewhere				to elsewhere											
Public/shared flush/toilet				Public/shared flush/toilet	3.9	0.7									
to piped sewer system				to piped sewer system											
to septic tank				to septic tank											
to pit				to pit											
to unknown place/ not sure/DK				to unknown place/ not sure/DK											
to elsewhere				to elsewhere											
Latrines		67.0	42.5		Latrines	17.8	21.7								
Pour flush latrines					Pour flush latrines										
to piped sewer system					to piped sewer system										
to septic tank					to septic tank										
to pit					to pit										
to unknown place/ not sure/DK					to unknown place/ not sure/DK										
to elsewhere					to elsewhere										
Private pour flush latrine					Private pour flush latrine										
to piped sewer system					to piped sewer system										
to septic tank					to septic tank										
to pit					to pit										
to unknown place/ not sure/DK					to unknown place/ not sure/DK										
to elsewhere					to elsewhere										
Public/shared pour flush latrine					Public/shared pour flush latrine										
to piped sewer system					to piped sewer system										
to septic tank					to septic tank										
to pit					to pit										
to unknown place/ not sure/DK					to unknown place/ not sure/DK										
to elsewhere					to elsewhere										
Dry latrines		67.0	42.5		Dry latrines	17.8	21.7								
Improved latrines					Improved latrines										
Ventilated Improved Pit latrine					Ventilated Improved Pit latrine										
Pit latrine with slab/covered latrine					Pit latrine with slab/covered latrine										
Traditional latrine	50.2	5.8		Traditional latrine	17.8	21.7									
Pit latrine without slab/open pit	16.8	36.7		Pit latrine without slab/open pit											
Hanging toilet/hanging latrine				Hanging toilet/hanging latrine											
Bucket latrine				Bucket latrine											
Other				Other											
Private Latrines				Private Latrines	17.8	21.7									
Ventilated Improved Pit latrine				Ventilated Improved Pit latrine											
Pit latrine with slab/covered latrine				Pit latrine with slab/covered latrine											
Traditional latrine				Traditional latrine	17.8	21.7									
Pit latrine without slab/open pit				Pit latrine without slab/open pit											
Hanging toilet/hanging latrine				Hanging toilet/hanging latrine											
Bucket latrine				Bucket latrine											
Other				Other											
Public/shared Latrines				Public/shared Latrines											
Ventilated Improved Pit latrine				Ventilated Improved Pit latrine											
Pit latrine with slab/covered latrine				Pit latrine with slab/covered latrine											
Traditional latrine				Traditional latrine											
Pit latrine without slab/open pit				Pit latrine without slab/open pit											
Hanging toilet/hanging latrine				Hanging toilet/hanging latrine											
Bucket latrine				Bucket latrine											
Other				Other											
Composting toilets				Composting toilets											
Composting toilet (private)				Composting toilet (private)											
Composting toilet (shared)				Composting toilet (shared)											
Other improved				Other improved											
Other				Other											
Other				Other											
No Facilities	No facility, bush, field	8.8	57.4	Nature	No facility, bush, field	7.4	62.4								
Other	Other unimproved	1.6	0.1	Other	Other unimproved	4.1	2.1								
	Other	1.6	0.1	Other	Other	4.1	2.1								
	Other				Other										
	DK/missing information				DK/missing information										
	Total	100.0	100.0		Total	100.0	98.8								
Calculations					Calculations										
Estimations	Improved pit and latrines based on MICS00	56.7	25.8		Improved pit and latrines based on MICS00	15.1	18.3								
	SC, based on CEN88	5.8	0.0												
Access to improved sanitation :				79%	26%	Access to improved sanitation :				86%	31%				
Access to sewerage connections :				6%	0%	Access to sewerage connections :				18%	0%				
Used for the estimates:				Yes	Yes	Used for the estimates:				No	No				
Used for the estimates:				Yes	Yes	Used for the estimates:				No	No				
Ratios	Shared improved facilities/all improved facilities				Shared improved facilities/all improved facilities										
	Improved latrine / All latrines				Improved latrine / All latrines										
	Covered dry latrines / All dry latrines				Covered dry latrines / All dry latrines										
	VIP / All latrines				VIP / All latrines										
	Traditional latrines / All latrines	75%	14%		Traditional latrines / All latrines	100%	100%								
Improved + traditional latrines / All latrines				Improved + traditional latrines / All latrines											
Sewerage connection among flush/pour flush				Sewerage connection among flush/pour flush	25.8	0.0									
Sewerage connection among flush				Sewerage connection among flush	25.8	0.0									
Number of people covered by the survey:						Number of people covered by the survey:									
Number of households covered by the survey:						Number of households covered by the survey:				2851	3837				
Total population:						Total population:									
Comments					Comments										

Use of sanitation facilities		DHS93			Senegal			Use of sanitation facilities		DHS97			Senegal		
Demographic and Health Survey					1993			Demographic and Health Survey					1997		
Original denomination	Classification	Urban	Rural	Total	Original denomination	Classification	Urban	Rural	Total						
	Flush and pour flush	25.4	1.7			Flush and pour flush	26.6	0.8							
	to piped sewer system					to piped sewer system									
	to septic tank					to septic tank									
	to pit					to pit									
	to unknown place/ not sure/DK					to unknown place/ not sure/DK									
	to elsewhere					to elsewhere									
	Flush/toilets	25.4	1.7			Flush/toilets	26.6	0.8							
	to piped sewer system					to piped sewer system									
	to septic tank					to septic tank									
	to pit					to pit									
	to unknown place/ not sure/DK					to unknown place/ not sure/DK									
	to elsewhere					to elsewhere									
Private WC	Private flush/toilet	14.3	1.4		Private WC	Private flush/toilet	16.8	0.3							
	to piped sewer system					to piped sewer system									
	to septic tank					to septic tank									
	to pit					to pit									
	to unknown place/ not sure/DK					to unknown place/ not sure/DK									
	to elsewhere					to elsewhere									
Shared WC	Public/shared flush/toilet	11.1	0.3		Shared WC	Public/shared flush/toilet	9.8	0.5							
	to piped sewer system					to piped sewer system									
	to septic tank					to septic tank									
	to pit					to pit									
	to unknown place/ not sure/DK					to unknown place/ not sure/DK									
	to elsewhere					to elsewhere									
	Latrines	61.1	38.3			Latrines	65.6	44.9							
	Pour flush latrines					Pour flush latrines									
	to piped sewer system					to piped sewer system									
	to septic tank					to septic tank									
	to pit					to pit									
	to unknown place/ not sure/DK					to unknown place/ not sure/DK									
	to elsewhere					to elsewhere									
	Private pour flush latrine					Private pour flush latrine									
	to piped sewer system					to piped sewer system									
	to septic tank					to septic tank									
	to pit					to pit									
	to unknown place/ not sure/DK					to unknown place/ not sure/DK									
	to elsewhere					to elsewhere									
	Public/shared pour flush latrine					Public/shared pour flush latrine									
	to piped sewer system					to piped sewer system									
	to septic tank					to septic tank									
	to pit					to pit									
	to unknown place/ not sure/DK					to unknown place/ not sure/DK									
	to elsewhere					to elsewhere									
	Dry latrines	61.1	38.3			Dry latrines	65.6	44.9							
	Improved latrines					Improved latrines									
	Ventilated Improved Pit latrine					Ventilated Improved Pit latrine									
	Pit latrine with slab/covered latrine					Pit latrine with slab/covered latrine									
Latrine	Traditional latrine	11.1	25.9		Latrine	Traditional latrine	11.1	28.7							
Pit	Pit latrine without slab/open pit	50.0	12.4		Pit	Pit latrine without slab/open pit	54.5	16.2							
	Hanging toilet/hanging latrine					Hanging toilet/hanging latrine									
	Bucket latrine					Bucket latrine									
	Other					Other									
	Private Latrines					Private Latrines									
	Ventilated Improved Pit latrine					Ventilated Improved Pit latrine									
	Pit latrine with slab/covered latrine					Pit latrine with slab/covered latrine									
	Traditional latrine					Traditional latrine									
	Pit latrine without slab/open pit					Pit latrine without slab/open pit									
	Hanging toilet/hanging latrine					Hanging toilet/hanging latrine									
	Bucket latrine					Bucket latrine									
	Other					Other									
	Public/shared Latrines					Public/shared Latrines									
	Ventilated Improved Pit latrine					Ventilated Improved Pit latrine									
	Pit latrine with slab/covered latrine					Pit latrine with slab/covered latrine									
	Traditional latrine					Traditional latrine									
	Pit latrine without slab/open pit					Pit latrine without slab/open pit									
	Hanging toilet/hanging latrine					Hanging toilet/hanging latrine									
	Bucket latrine					Bucket latrine									
	Other					Other									
	Composting toilets					Composting toilets									
	Composting toilet (private)					Composting toilet (private)									
	Composting toilet (shared)					Composting toilet (shared)									
	Other improved					Other improved									
	Other					Other									
No Facilities/Nature	No facility, bush, field	13.3	59.6		No Facilities/Nature	No facility, bush, field	7.5	53.9							
	Other unimproved					Other unimproved	0.2	0.3							
	Other					Other	0.2	0.3							
Not Defined/Not Specified	DK/missing information	0.2	0.3		Not Defined/Not Specified	DK/missing information	0.1	0.1							
	Total	100.0	99.9			Total	100.0	100.0							
Calculations					Calculations										
Estimations	Improved pit and latrines based on MICS00	51.7	23.2		Estimations	Improved pit and latrines based on MICS00	55.5	38.0							
	SC, based on CEN88	6.6	0.0			SC, based on MICS00	9.4	0.1							
Access to improved sanitation :		77%	25%		Access to improved sanitation :		82%	39%							
Access to sewerage connections :		7%	0%		Access to sewerage connections :		9%	0%							
Used for the estimates:		Yes	Yes		Used for the estimates:		Yes	Yes							
Used for the estimates:		Yes	Yes		Used for the estimates:		Yes	Yes							
Ratios	Shared improved facilities/all improved facilities				Ratios	Shared improved facilities/all improved facilities									
	Improved latrine / All latrines					Improved latrine / All latrines									
	Covered dry latrines / All dry latrines					Covered dry latrines / All dry latrines									
	VIP / All latrines					VIP / All latrines									
	Traditional latrines / All latrines	18%	88%			Traditional latrines / All latrines	17%	84%							
	Improved + traditional latrines / All latrines					Improved + traditional latrines / All latrines									
	Sewerage connection among flush/pour flush					Sewerage connection among flush/pour flush									
	Sewerage connection among flush					Sewerage connection among flush									
Number of people covered by the survey:					Number of people covered by the survey:										
Number of households covered by the survey:					Number of households covered by the survey:										
Total population:					Total population:										
Comments					Comments										

Use of sanitation facilities		DHS99		Senegal		Use of sanitation facilities		JMP99		Senegal	
Demographic and Health Survey				Global Water Supply and Sanitation Assessment 2000.				Water Supply and Sanitation Sector Questionnaire - 1999. Form 6 sent to WHO.			
		1999						1999			
Original denomination	Classification	Urban	Rural	Total	Original denomination	Classification	Urban	Rural	Total		
	Flush and pour flush	19.2	0.4			Flush and pour flush	13.7	0.0			
	to piped sewer system				Population served with household connections to conventional se	to piped sewer system					
	to septic tank					to septic tank					
	to pit					to pit					
	to unknown place/ not sure/DK					to unknown place/ not sure/DK					
	to elsewhere					to elsewhere					
	Flush/toilets	19.2	0.4			Flush/toilets					
	to piped sewer system					to piped sewer system					
	to septic tank					to septic tank					
	to pit					to pit					
	to unknown place/ not sure/DK					to unknown place/ not sure/DK					
	to elsewhere					to elsewhere					
Chasse d'eau personnelle	Private flush/toilet	11.4	0.3			Private flush/toilet					
	to piped sewer system					to piped sewer system					
	to septic tank					to septic tank					
	to pit					to pit					
	to unknown place/ not sure/DK					to unknown place/ not sure/DK					
	to elsewhere					to elsewhere					
Chasse d'eau commune	Public/shared flush/toilet	7.8	0.1			Public/shared flush/toilet					
	to piped sewer system					to piped sewer system					
	to septic tank					to septic tank					
	to pit					to pit					
	to unknown place/ not sure/DK					to unknown place/ not sure/DK					
	to elsewhere					to elsewhere					
	Latrines	72.8	50.1			Latrines					
	Pour flush latrines					Pour flush latrines					
	to piped sewer system					to piped sewer system					
	to septic tank					to septic tank					
	to pit					to pit					
	to unknown place/ not sure/DK					to unknown place/ not sure/DK					
	to elsewhere					to elsewhere					
	Private pour flush latrine					Private pour flush latrine					
	to piped sewer system					to piped sewer system					
	to septic tank					to septic tank					
	to pit					to pit					
	to unknown place/ not sure/DK					to unknown place/ not sure/DK					
	to elsewhere					to elsewhere					
	Public/shared pour flush latrine					Public/shared pour flush latrine					
	to piped sewer system					to piped sewer system					
	to septic tank					to septic tank					
	to pit					to pit					
	to unknown place/ not sure/DK					to unknown place/ not sure/DK					
	to elsewhere					to elsewhere					
	Dry latrines	72.8	50.1			Dry latrines					
	Improved latrines					Improved latrines					
	Ventilated Improved Pit latrine					Ventilated Improved Pit latrine					
	Pit latrine with slab/covered latrine					Pit latrine with slab/covered latrine					
Latrine	Traditional latrine	56.2	16.2			Traditional latrine					
Fosse	Pit latrine without slab/open pit	16.6	33.9			Pit latrine without slab/open pit					
	Hanging toilet/hanging latrine					Hanging toilet/hanging latrine					
	Bucket latrine					Bucket latrine					
	Other					Other					
	Private Latrines					Private Latrines					
	Ventilated Improved Pit latrine					Ventilated Improved Pit latrine					
	Pit latrine with slab/covered latrine					Pit latrine with slab/covered latrine					
	Traditional latrine					Traditional latrine					
	Pit latrine without slab/open pit					Pit latrine without slab/open pit					
	Hanging toilet/hanging latrine					Hanging toilet/hanging latrine					
	Bucket latrine					Bucket latrine					
	Other					Other					
	Public/shared Latrines					Public/shared Latrines					
	Ventilated Improved Pit latrine					Ventilated Improved Pit latrine					
	Pit latrine with slab/covered latrine					Pit latrine with slab/covered latrine					
	Traditional latrine					Traditional latrine					
	Pit latrine without slab/open pit					Pit latrine without slab/open pit					
	Hanging toilet/hanging latrine					Hanging toilet/hanging latrine					
	Bucket latrine					Bucket latrine					
	Other					Other					
	Composting toilets					Composting toilets					
	Composting toilet (private)					Composting toilet (private)					
	Composting toilet (shared)					Composting toilet (shared)					
	Other improved				Population without household connections but served	Other improved	56.3	13.0			
	Other					Other					
No Facilities/Nature	No facility, bush, field	5.9	47.3			No facility, bush, field					
	Other unimproved	1.5	1.8		Total population unserved	Other unimproved	30.0	87.0			
Other	Other	1.5	1.8			Other					
Not Defined/Not Specified	DK/missing information	0.5	0.4			DK/missing information					
	Total	99.9	100.0			Total	100.0	100.0			
Calculations					Calculations						
Estimations	Improved pit and latrines based on MICS00	61.6	42.4		Estimations						
	SC, based on MICS00	6.8	0.0								
Access to improved sanitation :		81%	43%		Access to improved plus shared sanitation:		70%	13%			
Access to sewerage connections :		7%	0%		Access to sewerage connections :		14%	0%			
Used for the estimates:		Yes	Yes		Used for the estimates:		No	No			
Used for the estimates:		Yes	Yes		Used for the estimates:		No	No			
Ratios	Shared improved facilities/all improved facilities				Ratios	Shared improved facilities/all improved facilities					
	Improved latrine / All latrines					Improved latrine / All latrines					
	Covered dry latrines / All dry latrines					Covered dry latrines / All dry latrines					
	VIP / All latrines					VIP / All latrines					
	Traditional latrines / All latrines	77%	32%			Traditional latrines / All latrines					
	Improved + traditional latrines / All latrines					Improved + traditional latrines / All latrines					
	Sewerage connection among flush/pour flush					Sewerage connection among flush					
	Sewerage connection among flush					Sewerage connection among flush					
	Number of people covered by the survey:					Number of people covered by the survey:					
	Number of households covered by the survey:					Number of households covered by the survey:					
	Total population:					Total population:	3901.3	5064.5			
Comments					Comments						

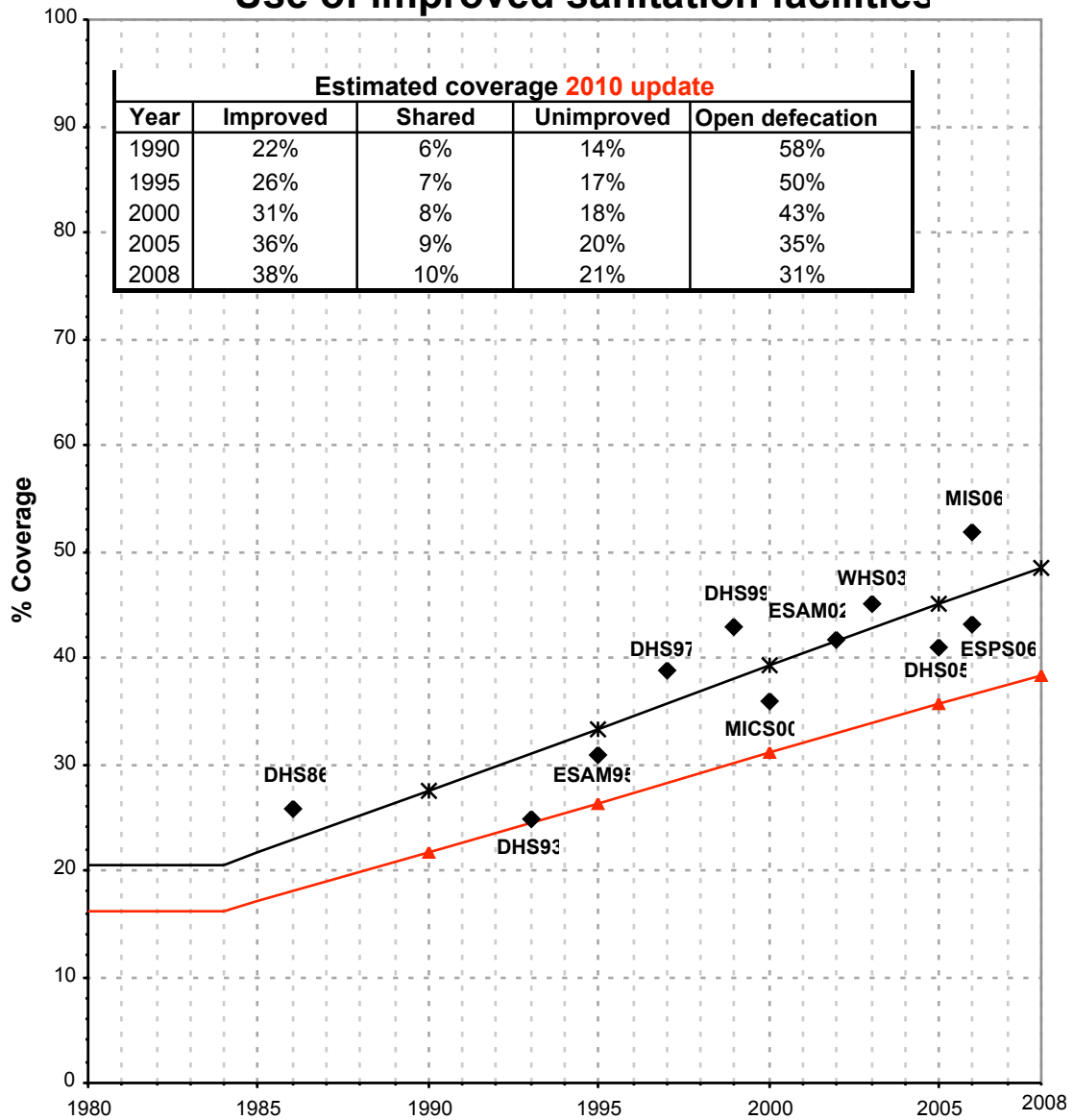
Senegal			SANITATION															
			URBAN								RURAL							
			Sewer connection		Total		Open defecation		Shared		Sewer connection		Total		Open defecation		Shared	
Source	Code	Year	Used	Not used	Used	Not used	Used	Not used	Used	Not used	Used	Not used	Used	Not used	Used	Not used	Used	Not used
Demographic and Health Survey	DHS86	1986	5.8		79.3		8.8				0.0		25.9		57.4			
National census	CEN88	1988		18.3		85.8		7.4			0.0		30.9		62.4			
Demographic and Health Survey	DHS93	1993	6.6		77.1		13.3				0.0		24.9		59.6			
Demographic and Health Survey	DHS97	1997	9.4		82.1		7.5				0.1		38.8		53.9			
Demographic and Health Survey	DHS99	1999	6.8		80.8		5.9				0.0		42.8		47.3			
Global Water Supply and Sanitation Assessment 2000.	JMP99	1999		13.7		70.0					0.0		13.0					
Multiple Indicator Cluster Survey	MICS00	2000	15.1		86.5		2.3				0.2		35.9		39.3			
World Health Survey	WHS03	2003	36.2		91.1		2.6		14.3		5.8		44.9		31.2		16.9	
Demographic and Health Survey	DHS05	2005	18.3		85.0		4.1		26.5		0.4		41.0		40.3		25.0	
Enquête Sénégalaise Auprès des Ménages	ESAM02	2002	16.2		85.3		6.3				0.2		41.7		40.2			
Malaria Indicator Survey	MIS06	2006	9.7		90.5		2.5		23.8		0.2		51.7		29.5		20.9	
Enquête Sénégalaise Auprès des Ménages	ESAM95	1995	15.0		82.8		4.2				0.2		30.8		49.1			
Enquête de suivi de la pauvreté	ESPS06	2006	9.1		81.5						1.6		43.2					

Senegal - urban - Use of improved sanitation facilities



Used for the estimates
 * Estimates
 JMP 2010 estimate

Senegal - rural - Use of improved sanitation facilities



◆ Used for the estimates ✱ Estimates ▲ JMP 2010 estimate

Sanitation

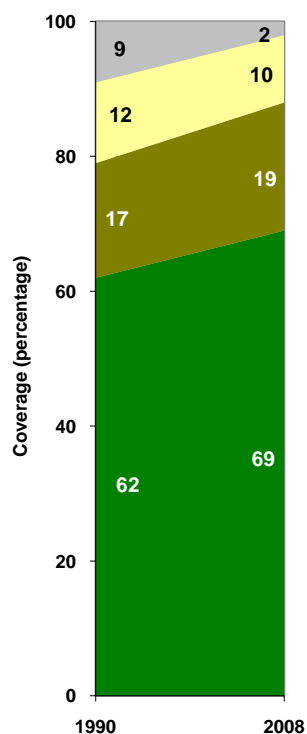
Senegal	Sanitation coverage estimates					
	Urban (%)		Rural (%)		Total (%)	
	1990	2008	1990	2008	1990	2008
Improved facilities	62	69	22	38	38	51
Shared facilities	17	19	6	10	10	14
Unimproved facilities	12	10	14	21	13	16
Open defecation	9	2	58	31	39	19

Source: WHO/UNICEF JMP, 2010

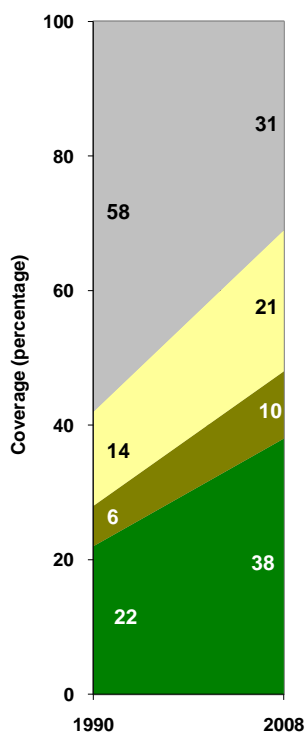
Senegal	Urban		Rural		Total	
	1990	2008	1990	2008	1990	2008
Population (x1000)	2,936	5,165	4,602	7,046	7,538	12,211

Source: UN / Population Division, 2008

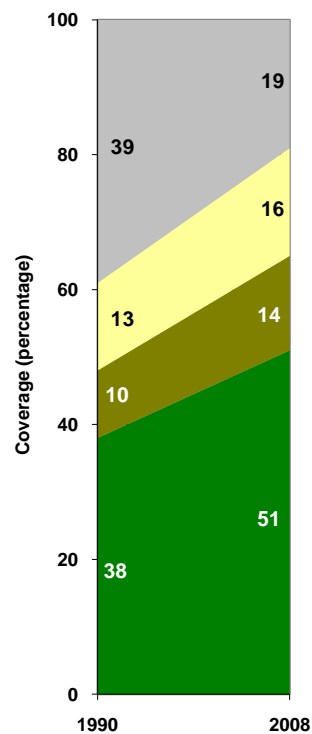
Urban sanitation trends



Rural sanitation trends



Total sanitation trends



■ Open defecation
 ■ Unimproved facilities
 ■ Shared facilities
 ■ Improved facilities

■ Open defecation
 ■ Unimproved facilities
 ■ Shared facilities
 ■ Improved facilities

■ Open defecation
 ■ Unimproved facilities
 ■ Shared facilities
 ■ Improved facilities