

**WHO / UNICEF**

**Joint Monitoring Programme**  
for Water Supply and Sanitation

Estimates for the use of

**Improved Drinking-Water Sources  
and Improved Sanitation Facilities**

Updated March 2010

[childinfo.org](http://childinfo.org)

Use of sanitation facilities		MICS00		Sao Tome and Principe	
Multiple Indicator Cluster Survey				2000	
Final Report					
Original denomination	Classification	Urban	Rural	Total	
	<b>Flush and pour flush</b>	22.9	14.2		
	to piped sewer system				
	to septic tank				
	to pit				
	to unknown place/ not sure/DK				
	to elsewhere				
Sistema de esgoto ou fossa séptica	<b>Flush/toilets</b>	20.8	12.5		
	to piped sewer system				
	to septic tank				
	to pit				
	to unknown place/ not sure/DK				
	to elsewhere				
	<b>Private flush/toilet</b>				
	to piped sewer system				
	to septic tank				
	to pit				
	to unknown place/ not sure/DK				
	to elsewhere				
	<b>Public/shared flush/toilet</b>				
	to piped sewer system				
	to septic tank				
	to pit				
	to unknown place/ not sure/DK				
	to elsewhere				
	<b>Latrines</b>	12.1	7.9		
Latrina com descarga de água	<b>Pour flush latrines</b>	2.1	1.7		
	to piped sewer system				
	to septic tank				
	to pit				
	to unknown place/ not sure/DK				
	to elsewhere				
	<b>Private pour flush latrine</b>				
	to piped sewer system				
	to septic tank				
	to pit				
	to unknown place/ not sure/DK				
	to elsewhere				
	<b>Public/shared pour flush latrine</b>				
	to piped sewer system				
	to septic tank				
	to pit				
	to unknown place/ not sure/DK				
	to elsewhere				
	<b>Dry latrines</b>	10.0	6.2		
	<b>Improved latrines</b>	8.1	5.1		
Latrina melhorada	Ventilated Improved Pit latrine	8.1	5.1		
	Pit latrine with slab/covered latrine				
Latrina tradicional	Traditional latrine	1.9	1.1		
	Pit latrine without slab/open pit				
	Hanging toilet/hanging latrine				
	Bucket latrine				
	Other				
	<b>Private Latrines</b>				
	Ventilated Improved Pit latrine				
	Pit latrine with slab/covered latrine				
	Traditional latrine				
	Pit latrine without slab/open pit				
	Hanging toilet/hanging latrine				
	Bucket latrine				
	Other				
	<b>Public/shared Latrines</b>				
	Ventilated Improved Pit latrine				
	Pit latrine with slab/covered latrine				
	Traditional latrine				
	Pit latrine without slab/open pit				
	Hanging toilet/hanging latrine				
	Bucket latrine				
	Other				
	<b>Composting toilets</b>				
	Composting toilet (private)				
	Composting toilet (shared)				
	<b>Other improved</b>				
	Other				
	Other				
Mata, praia ou campo	<b>No facility, bush, field</b>	66.9	79.5		
otro	<b>Other unimproved</b>	0.2	0.1		
	Other	0.2	0.1		
	Other				
	<b>DK/missing information</b>				
	<b>Total</b>	100.0	100.0		
<b>Calculations</b>					
<b>Estimations</b>	50% of traditional latrines considered improved	1.0	0.6		
	Sewerage connection estimated based on MICS06	6.3	4.6		
<b>Access to improved sanitation :</b>		<b>32%</b>	<b>20%</b>		
<b>Access to sewerage connections :</b>		<b>6%</b>	<b>5%</b>		
Used for the estimates :		Yes	Yes		
Used for the estimates :		Yes	Yes		
<b>Ratios</b>	Shared improved facilities/all improved facilities				
	Improved latrine / All latrines	84%	86%		
	Covered dry latrines / All dry latrines				
	VIP / All latrines	81%	82%		
	Traditional latrines / All latrines	16%	14%		
	Improved + traditional latrines / All latrines	100%	100%		
	Sewerage connection among flush/pour flush				
	Sewerage connection among flush				
	Number of people covered by the survey				
	Number of households covered by the survey				
	Total population				
<b>Comments</b>					

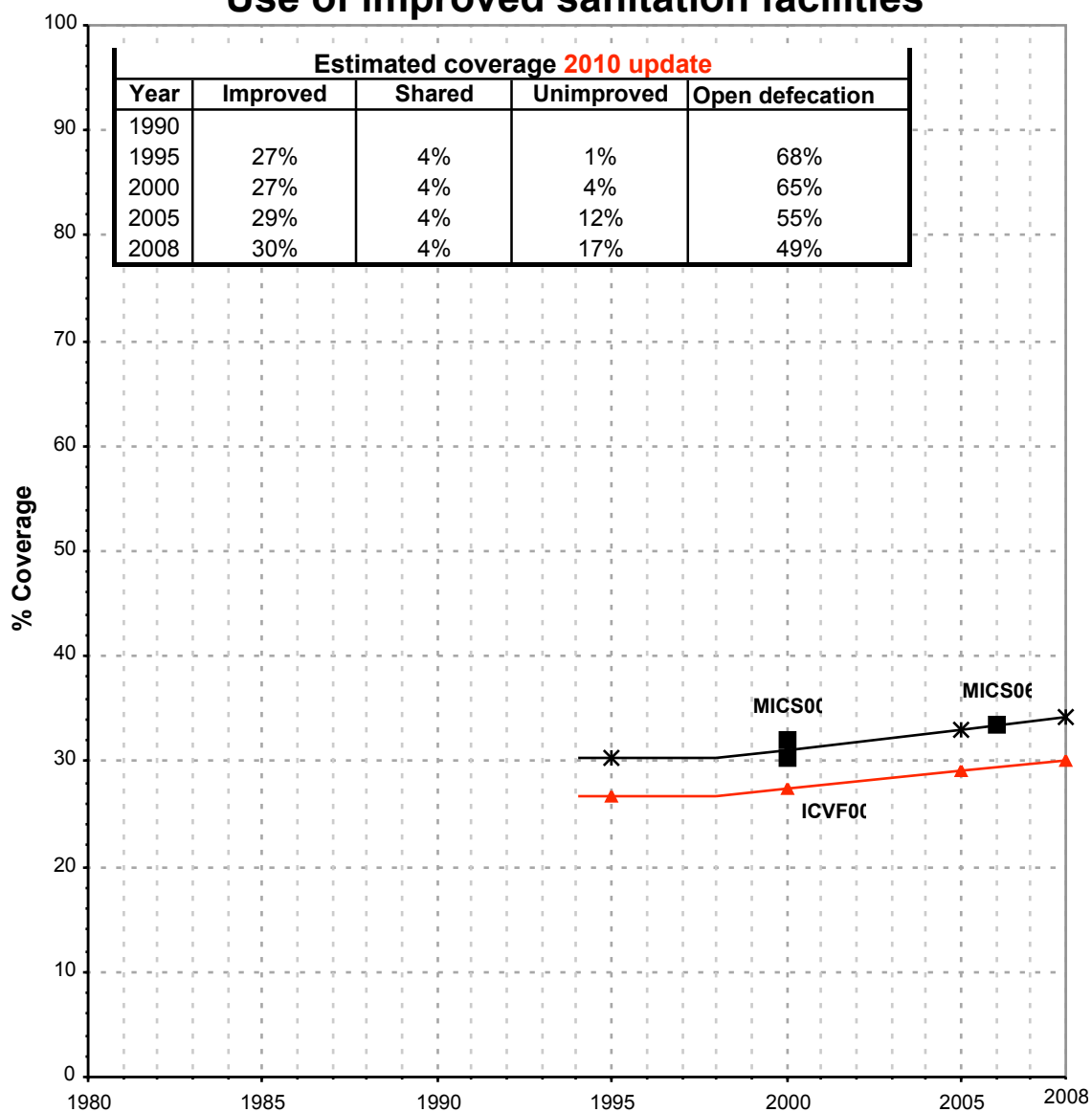






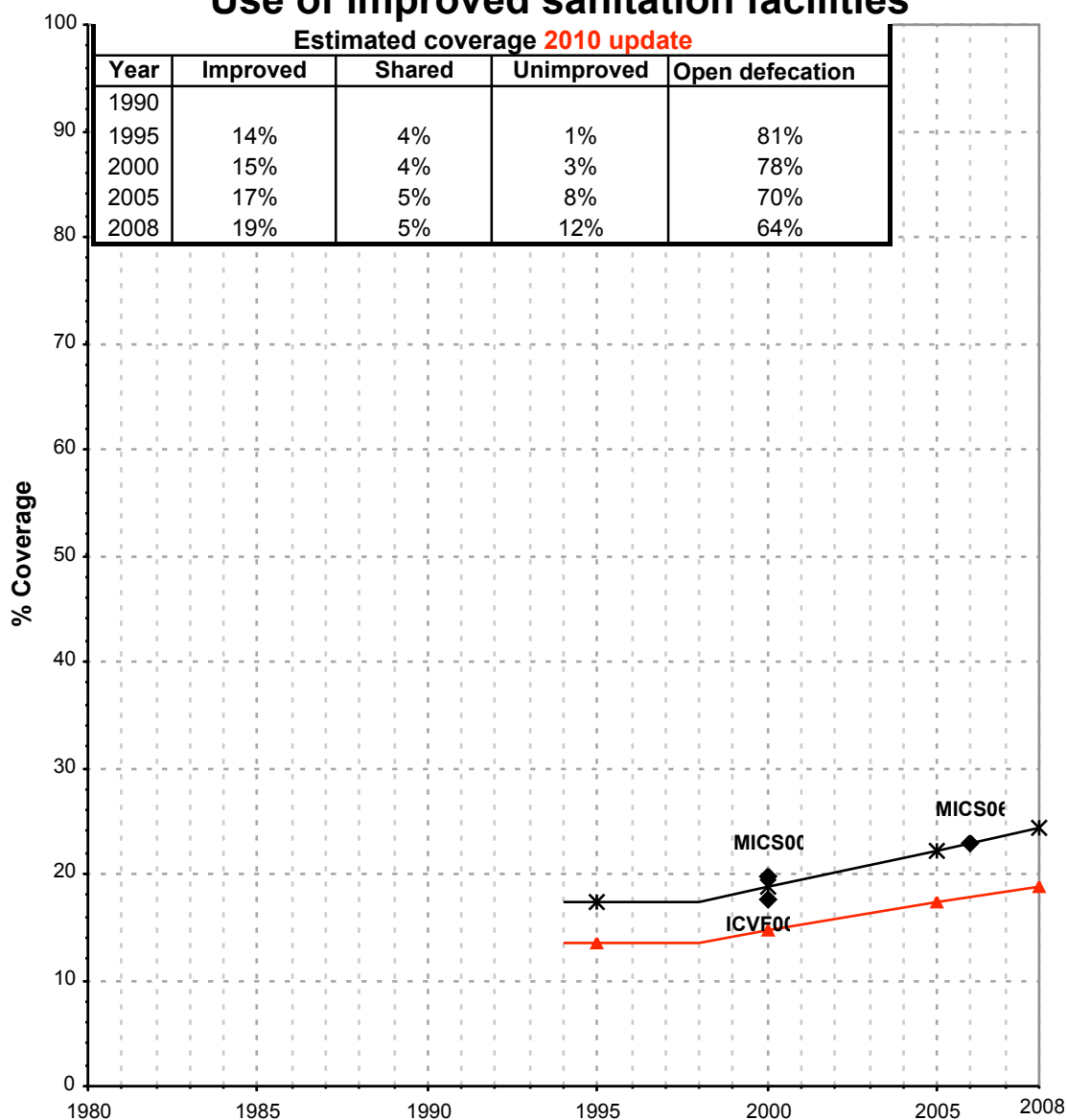
Sao Tome and Principe			SANITATION															
			URBAN								RURAL							
			Sewer connection		Total		Open defecation		Shared		Sewer connection		Total		Open defecation		Shared	
Source	Code	Year	Used	Not used	Used	Not used	Used	Not used	Used	Not used	Used	Not used	Used	Not used	Used	Not used	Used	Not used
Multiple Indicator Cluster Survey	MICS00	2000	6.3		32.0		66.9				4.6		19.9		79.5			
Rapport de l'emquete nationale sur les conditions de vie des menages	ENCV00	2000																
Multiple Indicator Cluster Survey	MICS06	2006	7.1		33.4		53.2		12.0		6.2		22.9		67.8		22.3	
Inquérito sobre Condições de Vida das Familias	CVF00	2000			30.4		62.8						17.7		76.7			

# Sao Tome & Principe - urban - Use of improved sanitation facilities



■ Used for the estimates \* Estimates —▲ JMP 2010 estimate

# Sao Tome & Principe - rural - Use of improved sanitation facilities



◆ Used for the estimates    ✱ Estimates    ▲ JMP 2010 estimate

# Sanitation

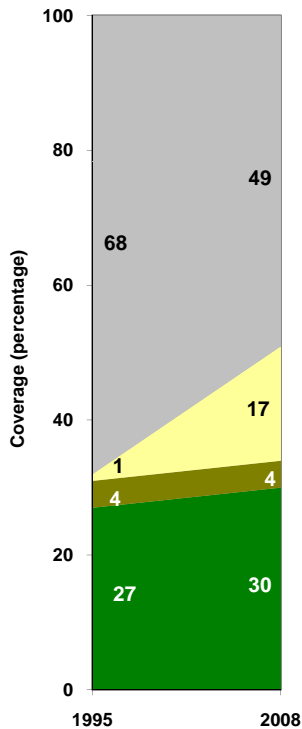
Sao Tome and Principe	Sanitation coverage estimates					
	Urban (%)		Rural (%)		Total (%)	
	1995	2008	1995	2008	1995	2008
Improved facilities	27	30	14	19	20	26
Shared facilities	4	4	4	5	4	4
Unimproved facilities	1	17	1	12	1	15
Open defecation	68	49	81	64	75	55

Source: WHO/UNICEF JMP, 2010

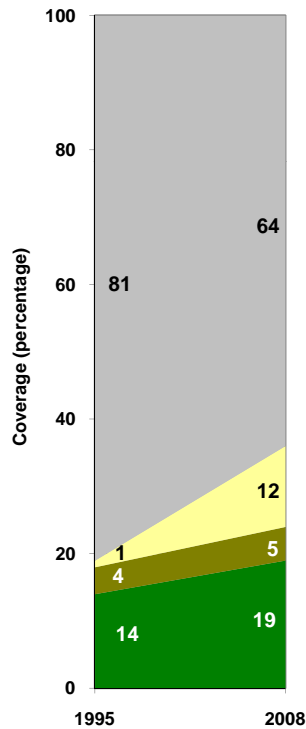
Sao Tome and Principe	Urban		Rural		Total	
	1995	2008	1995	2008	1995	2008
Population (x1000)	62	97	66	63	128	160

Source: UN / Population Division, 2008

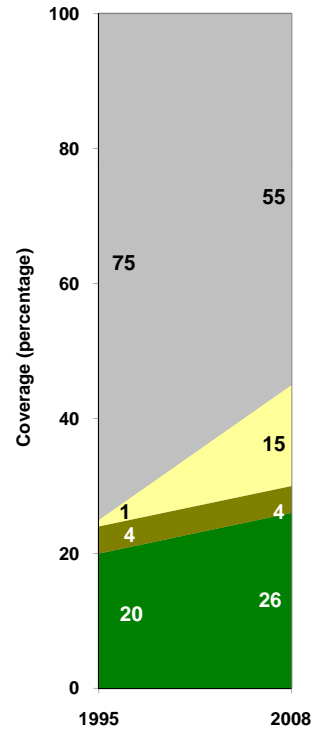
Urban sanitation trends



Rural sanitation trends



Total sanitation trends



■ Open defecation  
■ Unimproved facilities  
■ Shared facilities  
■ Improved facilities

■ Open defecation  
■ Unimproved facilities  
■ Shared facilities  
■ Improved facilities

■ Open defecation  
■ Unimproved facilities  
■ Shared facilities  
■ Improved facilities