

WHO / UNICEF

Joint Monitoring Programme
for Water Supply and Sanitation

Estimates for the use of

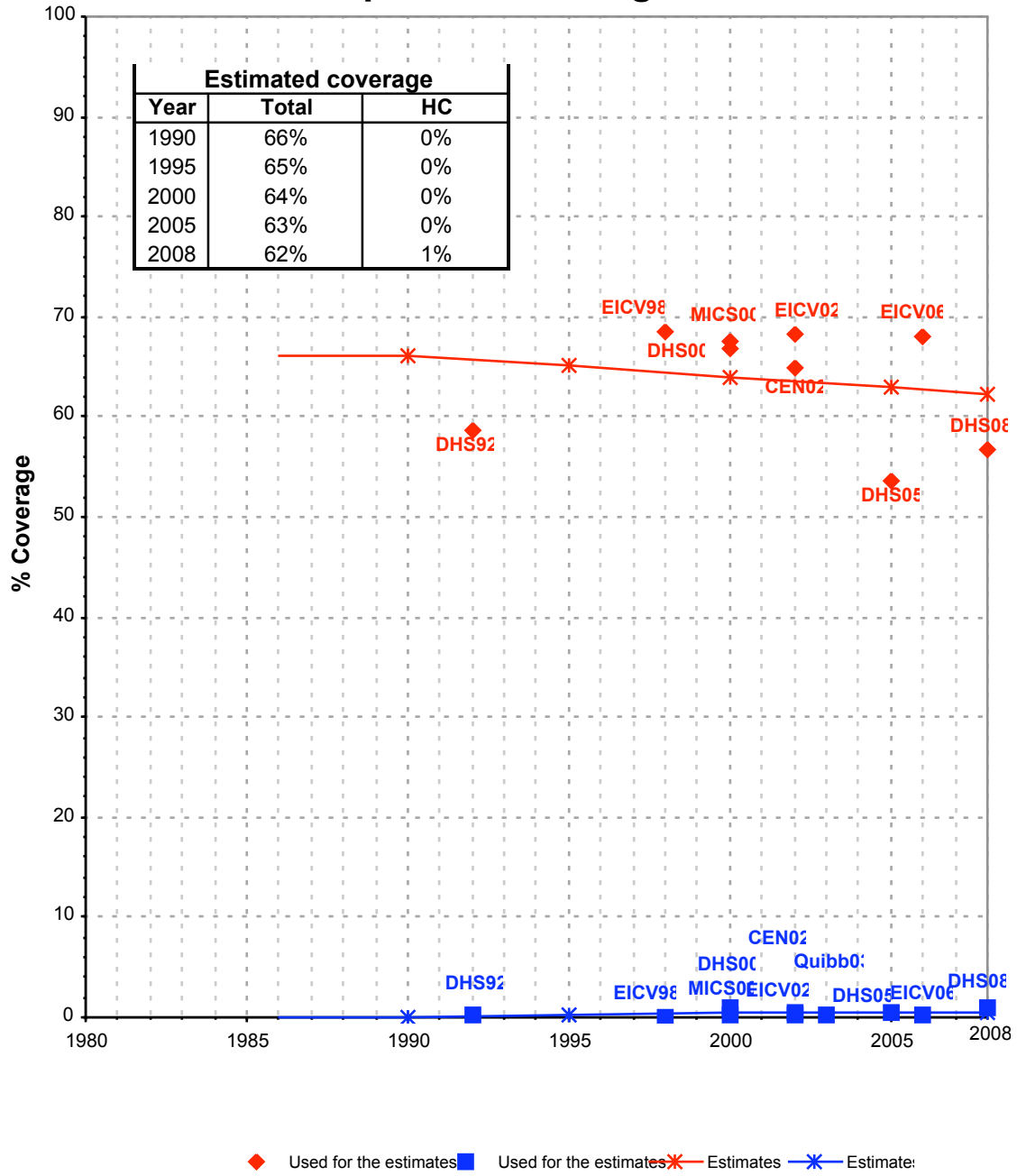
**Improved Drinking-Water Sources
and Improved Sanitation Facilities**

Updated March 2010

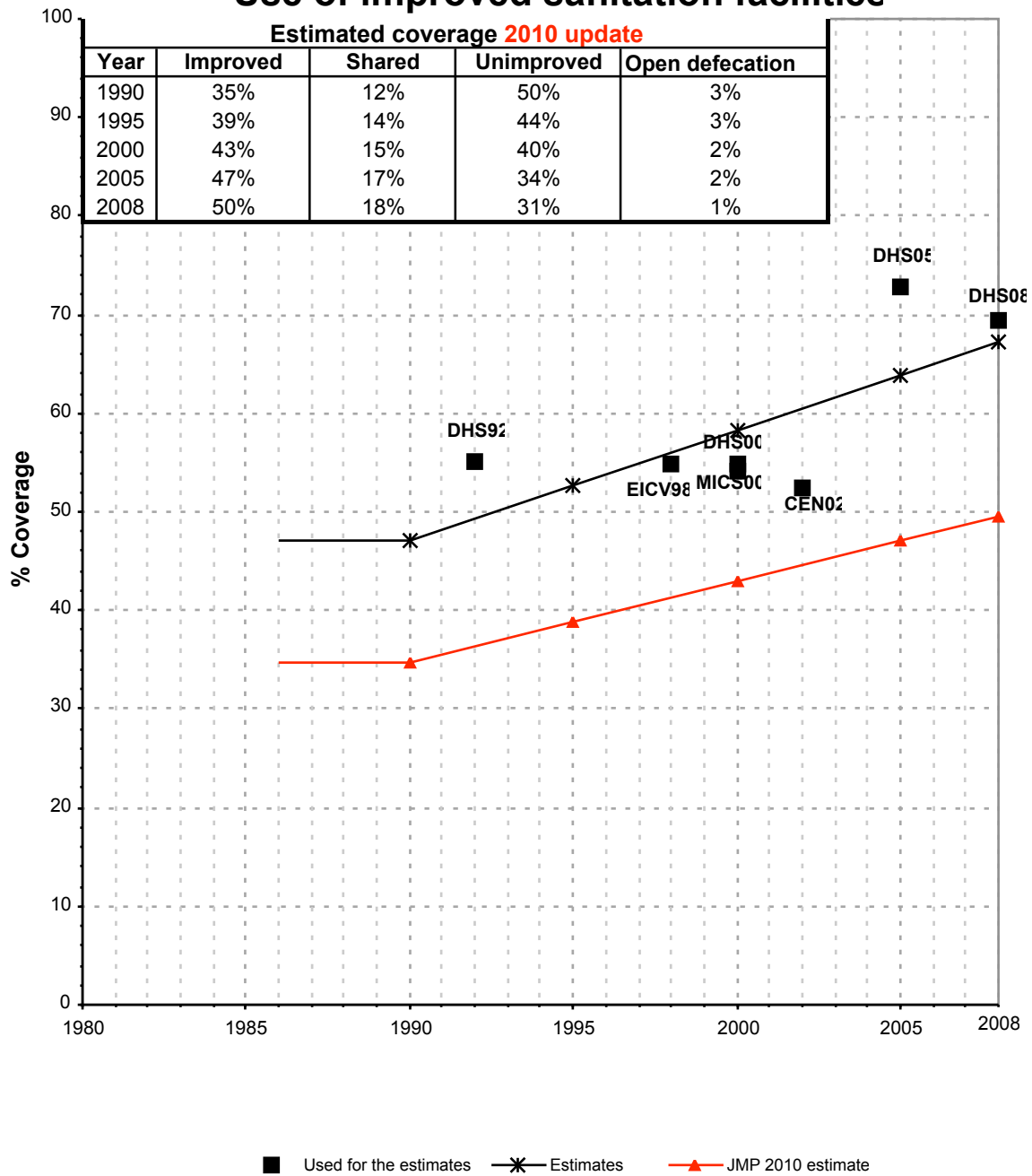
childinfo.org

Rwanda			SANITATION																
			URBAN								RURAL								
			Sewer connection		Total		Open defecation		Shared		Sewer connection		Total		Open defecation		Shared		
Source	Code	Year	Used	Not used	Used	Not used	Used	Not used	Used	Not used	Used	Not used	Used	Not used	Used	Not used	Used	Not used	
Demographic and Health Survey	DHS92	1992			55.2		4.1						36.7		7.7				
Global Water Supply and Sanitation Assessment 2000.	JMP99	1999		0.0		12.0						0.0		7.6					
Demographic and Health Survey	DHS00	2000			54.8		1.5		30.1				37.9		4.4		9.4		
Multiple Indicator Cluster Survey	MICS00	2000			54.2		1.9						37.0		3.3				
Census	CEN02	2002			52.4		0.6						45.3		1.5				
Enquête Intégrale sur les Conditions de Vie des Ménages	EICV02	2002				71.7		3.0					43.4		6.5				
Demographic and Household Survey	DHS05	2005			72.7		3.4		25.8				52.0		4.8		11.0		
Enquête Intégrale sur les Conditions de Vie des Ménages	EICV06	2006				86.9		4.6					58.4		6.7				
Enquête Intégrale sur les Conditions de Vie des Ménages	EICV98	1998			55.0		1.6						43.4		6.4				
Enquête Intégrale sur les Conditions de Vie des Ménages	EICV01	2001																	
Questionnaire Unifié sur les Indicateurs de Bien-être de Base	QUIBB03	2003				82.4								60.1					
	DHS08	2008			69.3		1.2		22.7				73.1		2.4		9.7		
Census	CEN91	1991																	

Rwanda - rural - Use of improved drinking water sources



Rwanda - urban - Use of improved sanitation facilities



Sanitation

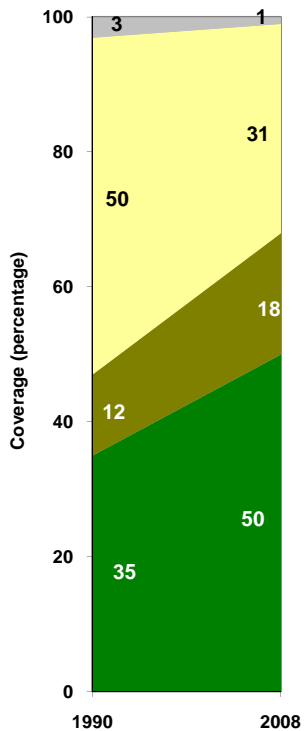
Rwanda	Sanitation coverage estimates					
	Urban (%)		Rural (%)		Total (%)	
	1990	2008	1990	2008	1990	2008
Improved facilities	35	50	22	55	23	54
Shared facilities	12	18	2	6	3	8
Unimproved facilities	50	31	69	36	67	35
Open defecation	3	1	7	3	7	3

Source: WHO/UNICEF JMP, 2010

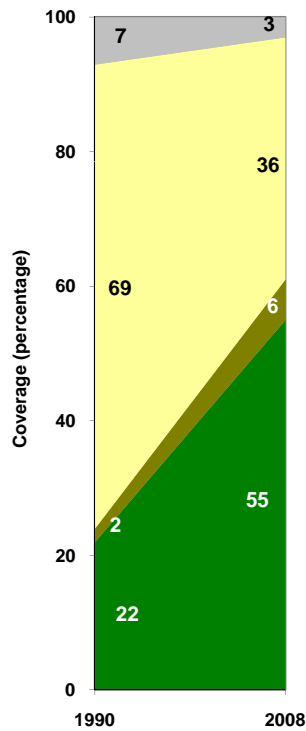
Rwanda	Urban		Rural		Total	
	1990	2008	1990	2008	1990	2008
Population (x1000)	387	1,778	6,763	7,943	7,150	9,721

Source: UN / Population Division, 2008

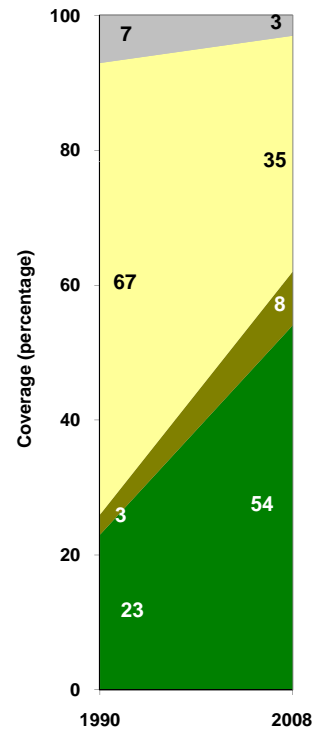
Urban sanitation trends



Rural sanitation trends



Total sanitation trends



■ Open defecation
 ■ Unimproved facilities
 ■ Shared facilities
 ■ Improved facilities

■ Open defecation
 ■ Unimproved facilities
 ■ Shared facilities
 ■ Improved facilities

■ Open defecation
 ■ Unimproved facilities
 ■ Shared facilities
 ■ Improved facilities