

WHO / UNICEF

Joint Monitoring Programme
for Water Supply and Sanitation

Estimates for the use of

**Improved Drinking-Water Sources
and Improved Sanitation Facilities**

Updated March 2010

childinfo.org

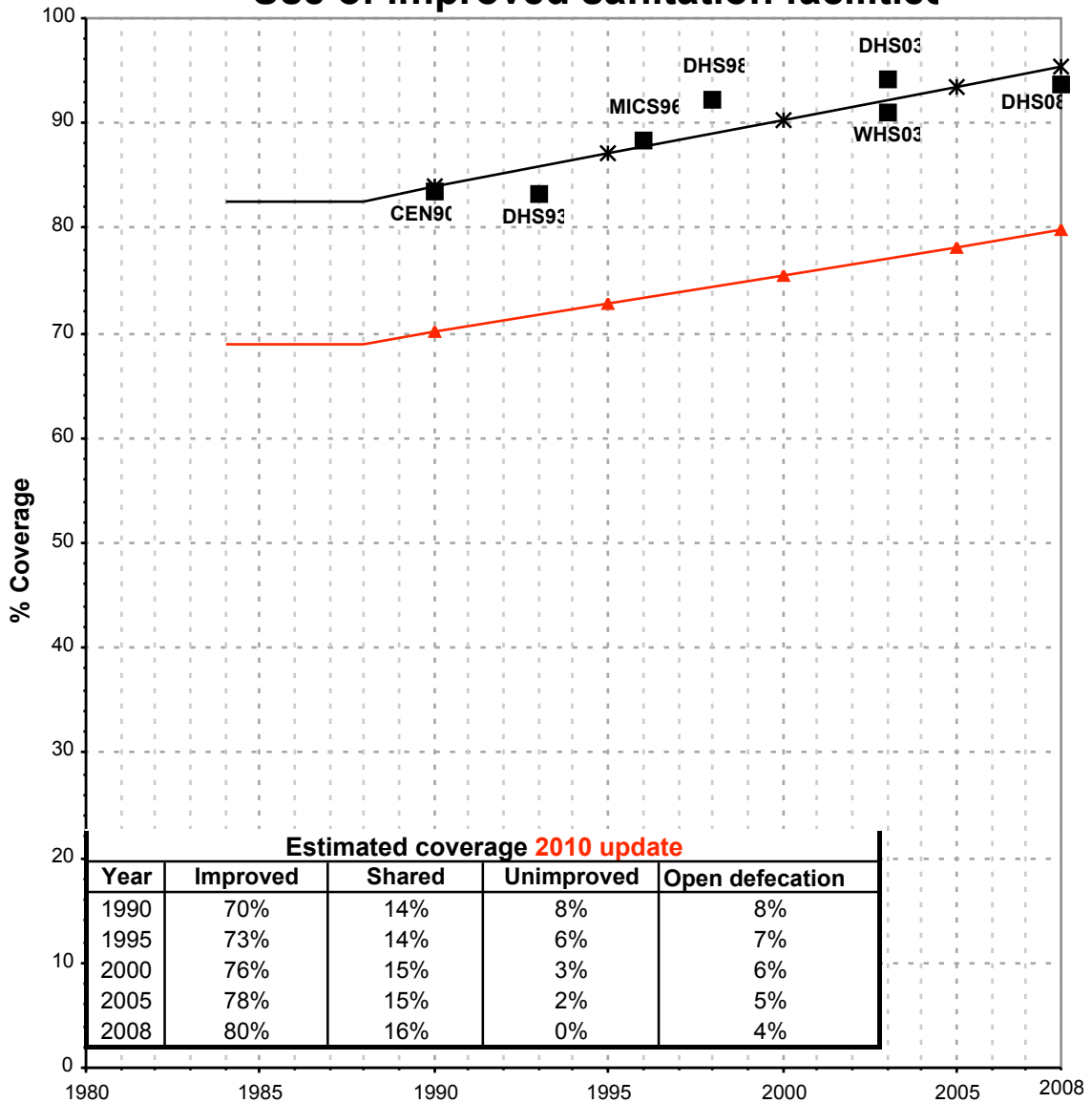
Use of sanitation facilities		CEN90			Philippines			Use of sanitation facilities		DHS93			Philippines		
National Census					1990			Demographic and Health Survey					1993		
10% micro dataset from IPUMS															
Original denomination	Classification	Urban	Rural	Total	Original denomination	Classification	Urban	Rural	Total						
	Flush and pour flush	77.8	39.8			Flush and pour flush	75.8	50.4	63.3						
	to piped sewer system					to piped sewer system									
	to septic tank	63.1	23.1			to septic tank									
	to pit					to pit									
	to unknown place/ not sure/DK	14.7	16.7			to unknown place/ not sure/DK									
	to elsewhere					to elsewhere									
	Flush/toilets	63.1	23.1			Flush/toilets	75.8	50.4	63.3						
	to piped sewer system					to piped sewer system									
	to septic tank	63.1	23.1			to septic tank									
	to pit					to pit									
	to unknown place/ not sure/DK					to unknown place/ not sure/DK									
	to elsewhere					to elsewhere									
	Private flush/toilet	51.6	19.3		Own flush toilet	Private flush/toilet	62.8	43.5	53.3						
	to piped sewer system					to piped sewer system									
	to septic tank	51.6	19.3			to septic tank									
	to pit					to pit									
	to unknown place/ not sure/DK					to unknown place/ not sure/DK									
	to elsewhere					to elsewhere									
Septic tank- own use															
	Public/shared flush/toilet	11.5	3.8		Shared flush toilet	Public/shared flush/toilet	13.0	6.9	10.0						
	to piped sewer system					to piped sewer system									
	to septic tank	11.5	3.8			to septic tank									
	to pit					to pit									
	to unknown place/ not sure/DK					to unknown place/ not sure/DK									
	to elsewhere					to elsewhere									
Septic tank- share															
	Latrines	26.6	52.2			Latrines	18.1	29.2	23.5						
	Pour flush latrines	14.7	16.7			Pour flush latrines									
	to piped sewer system					to piped sewer system									
	to septic tank					to septic tank									
	to pit					to pit									
	to unknown place/ not sure/DK	14.7	16.7			to unknown place/ not sure/DK									
	to elsewhere					to elsewhere									
	Private pour flush latrine	10.0	12.5			Private pour flush latrine									
	to piped sewer system					to piped sewer system									
	to septic tank					to septic tank									
	to pit					to pit									
	to unknown place/ not sure/DK	10.0	12.5			to unknown place/ not sure/DK									
	to elsewhere					to elsewhere									
Other depository- own use															
	Public/shared pour flush latrine	4.7	4.2			Public/shared pour flush latrine									
	to piped sewer system					to piped sewer system									
	to septic tank					to septic tank									
	to pit					to pit									
	to unknown place/ not sure/DK	4.7	4.2			to unknown place/ not sure/DK									
	to elsewhere					to elsewhere									
Other depository- share															
	Dry latrines	11.9	35.5			Dry latrines	18.1	29.2	23.5						
	Improved latrines	5.8	13.2			Improved latrines									
	Ventilated Improved Pit latrine					Ventilated Improved Pit latrine									
Closed pit	Pit latrine with slab/covered latrine	5.8	13.2			Pit latrine with slab/covered latrine									
	Traditional latrine					Traditional latrine	12.3	15.3	13.8						
Open pit	Pit latrine without slab/open pit	6.1	22.3		Open privy	Pit latrine without slab/open pit	3.8	10.0	6.8						
	Hanging toilet/hanging latrine				Drop/overhang	Hanging toilet/hanging latrine	2.0	3.9	2.9						
	Bucket latrine					Bucket latrine									
	Other					Other									
	Private Latrines					Private Latrines	8.7	12.0	10.3						
	Ventilated Improved Pit latrine					Ventilated Improved Pit latrine									
	Pit latrine with slab/covered latrine				Trad. Own pit latrine	Pit latrine with slab/covered latrine									
	Traditional latrine					Traditional latrine	8.7	12.0	10.3						
	Pit latrine without slab/open pit					Pit latrine without slab/open pit									
	Hanging toilet/hanging latrine					Hanging toilet/hanging latrine									
	Bucket latrine					Bucket latrine									
	Other					Other									
	Public/shared Latrines					Public/shared Latrines	3.6	3.3	3.5						
	Ventilated Improved Pit latrine					Ventilated Improved Pit latrine									
	Pit latrine with slab/covered latrine				Trad. Shared pit latrine	Pit latrine with slab/covered latrine									
	Traditional latrine					Traditional latrine	3.6	3.3	3.5						
	Pit latrine without slab/open pit					Pit latrine without slab/open pit									
	Hanging toilet/hanging latrine					Hanging toilet/hanging latrine									
	Bucket latrine					Bucket latrine									
	Other					Other									
	Composting toilets					Composting toilets									
	Composting toilet (private)					Composting toilet (private)									
	Composting toilet (shared)					Composting toilet (shared)									
	Other improved					Other improved									
	Other					Other									
	Other					Other									
None	No facility, bush, field	6.3	22.5		No facilities	No facility, bush, field	5.8	20.1	12.8						
	Other unimproved	1.9	2.1			Other unimproved	0.2	0.0	0.1						
Others	Other	1.9	2.1		Other	Other	0.2	0.0	0.1						
	Other					Other									
	DK/missing information				Missing	DK/missing information	0.2	0.2	0.2						
	Total	99.9	99.9			Total	100.1	99.9	99.9						
Calculations					Calculations										
Estimations					Estimations										
						Traditional latrines considered improved, based on MICS06	7.3	8.6							
						sewerage connections based on MICS 96	4.9	1.0							
	Access to improved sanitation :	84%	53%			Access to improved sanitation :	83%	59%							
	Access to sewerage connections :					Access to sewerage connections :	5%	1%							
	Used for the estimates	Yes	Yes			Used for the estimates	Yes	Yes							
	Used for the estimates	Yes	Yes			Used for the estimates	Yes	Yes							
Ratios	Shared improved facilities/all improved facilities					Shared improved facilities/all improved facilities	16.5%	13.8%							
	Improved latrine / All latrines	77%	57%			Improved latrine / All latrines									
	Covered dry latrines / All dry latrines	49%	37%			Covered dry latrines / All dry latrines									
	VIP / All latrines					VIP / All latrines									
	Traditional latrines / All latrines					Traditional latrines / All latrines	68%	52%	59%						
	Improved + traditional latrines / All latrines					Improved + traditional latrines / All latrines									
	Sewerage connection among flush/pour flush					Sewerage connection among flush/pour flush									
	Sewerage connection among flush					Sewerage connection among flush									
	Number of people covered by the survey					Number of people covered by the survey									
	Number of households covered by the survey					Number of households covered by the survey									
	Total population					Total population									
Comments					Comments	(updated after query response received)									

Use of sanitation facilities		JMP99			Philippines			Use of sanitation facilities		WHS03			Philippines		
Global Water Supply and Sanitation Assessment 2000.					World Health Survey										
Water Supply and Sanitation Sector Questionnaire - 1999. Form 6 sent to WHO.					1999					2003					
Original denomination	Classification	Urban	Rural	Total	Original denomination	Classification	Urban	Rural	Total						
Population served with household connections to conventional	Flush and pour flush	2.9	0.0		Flush and pour flush		86.1	71.2							
	to piped sewer system	2.9	0.0		to piped sewer system		7.1	2.2							
	to septic tank				to septic tank		24.0	13.7							
	to pit				to pit										
	to unknown place/ not sure/DK				to unknown place/ not sure/DK										
	to elsewhere				to elsewhere										
	Flush/toilets				Flush/toilets		31.1	17.9							
	to piped sewer system				to piped sewer system		7.1	2.2							
	to septic tank				to septic tank		24.0	15.7							
	to pit				to pit										
to unknown place/ not sure/DK				to unknown place/ not sure/DK											
to elsewhere				to elsewhere											
Private flush/toilet				Private flush/toilet		27.6	16.1								
to piped sewer system				Private domestic connection to sewage system		6.8	2.0								
to septic tank				Private flush to septic tank		20.8	14.1								
to pit				to pit											
to unknown place/ not sure/DK				to unknown place/ not sure/DK											
to elsewhere				to elsewhere											
Public/shared flush/toilet				Public/shared flush/toilet		3.5	1.8								
to piped sewer system				Shared domestic connection to sewage system		0.3	0.2								
to septic tank				Shared flush to septic tank		3.2	1.6								
to pit				to pit											
to unknown place/ not sure/DK				to unknown place/ not sure/DK											
to elsewhere				to elsewhere											
Latrines				Latrines		62.0	67.9								
Pour flush latrines				Pour flush latrines		55.0	53.3								
to piped sewer system				to piped sewer system											
to septic tank				to septic tank											
to pit				to pit											
to unknown place/ not sure/DK				to unknown place/ not sure/DK											
to elsewhere				to elsewhere											
Private pour flush latrine				Private pour flush latrine		46.5	46.3								
to piped sewer system				Private pour flush latrine											
to septic tank				to septic tank											
to pit				to pit											
to unknown place/ not sure/DK				to unknown place/ not sure/DK											
to elsewhere				to elsewhere											
Public/shared pour flush latrine				Public/shared pour flush latrine		8.5	7.0								
to piped sewer system				Shared pour flush latrine											
to septic tank				to septic tank											
to pit				to pit											
to unknown place/ not sure/DK				to unknown place/ not sure/DK											
to elsewhere				to elsewhere											
Dry latrines				Dry latrines		7.0	14.5								
Improved latrines				Improved latrines		4.9	9.6								
Ventilated Improved Pit latrine				Ventilated Improved Pit latrine											
Pit latrine with slab/covered latrine				Pit latrine with slab/covered latrine		4.9	9.6								
Traditional latrine				Traditional latrine											
Pit latrine without slab/open pit				Pit latrine without slab/open pit		1.6	4.3								
Hanging toilet/hanging latrine				Hanging toilet/hanging latrine											
Bucket latrine				Bucket latrine (where fresh excreta are manually removed)		0.5	0.6								
Other				Other											
Private Latrines				Private Latrines		4.1	8.4								
Ventilated Improved Pit latrine				Ventilated Improved Pit latrine											
Pit latrine with slab/covered latrine				Pit latrine with slab/covered latrine		4.1	8.4								
Traditional latrine				Traditional latrine											
Pit latrine without slab/open pit				Pit latrine without slab/open pit											
Hanging toilet/hanging latrine				Hanging toilet/hanging latrine											
Bucket latrine				Bucket latrine											
Other				Other											
Public/shared Latrines				Public/shared Latrines		0.8	1.2								
Ventilated Improved Pit latrine				Ventilated Improved Pit latrine											
Pit latrine with slab/covered latrine				Pit latrine with slab/covered latrine		0.8	1.2								
Traditional latrine				Traditional latrine											
Pit latrine without slab/open pit				Pit latrine without slab/open pit											
Hanging toilet/hanging latrine				Hanging toilet/hanging latrine											
Bucket latrine				Bucket latrine											
Other				Other											
Composting toilets				Composting toilets											
Composting toilet (private)				Composting toilet (private)											
Composting toilet (shared)				Composting toilet (shared)											
Population without household connections but served	Other improved	89.4	69.8		Other improved										
Other	Other			Other											
Other	Other			Other											
No facility, bush, field	No facility, bush, field			No facilities (open defecation)		6.7	14.1								
Total population unserved	Other unimproved	7.7	30.2	Other		0.2	0.1								
Other	Other			Other		0.2	0.1								
DK/missing information	DK/missing information			DK/missing information											
Total		100.0	100.0	Total		100.0	99.9								
Calculations				Calculations											
Estimations				Estimations											
Access to improved plus shared sanitation:		92%	70%	Access to improved sanitation:		91%	81%								
Access to sewerage connections:		3%	0%	Access to sewerage connections:		7%	2%								
Used for the estimates		No	No	Used for the estimates		Yes	Yes								
Used for the estimates		No	No	Used for the estimates		Yes	Yes								
Ratios	Shared improved facilities/all improved facilities			Shared improved facilities/all improved facilities		14.1%	12.4%								
	Improved latrine / All latrines			Improved latrine / All latrines		97%	93%								
	Covered dry latrines / All dry latrines			Covered dry latrines / All dry latrines		70%	66%								
	VIP / All latrines			VIP / All latrines											
	Traditional latrines / All latrines			Traditional latrines / All latrines											
	Improved + traditional latrines / All latrines			Improved + traditional latrines / All latrines		8.2	3.1								
				Sewerage connection among flush/pour flush		22.8	12.3								
				Sewerage connection among flush											
	Number of people covered by the survey:			Number of people covered by the survey:											
	Number of households covered by the survey:			Number of households covered by the survey:											
	Total population:	32000	41000	Total population:											
Comments				Comments											

Use of sanitation facilities		DHS03			DHS08				
Demographic and Health Survey		Philippines			Philippines				
		2003			2008				
Original denomination	Classification	Urban	Rural	Total	Original denomination	Classification	Urban	Rural	Total
	Flush and pour flush	92.6	64.3			Flush and pour flush	93.3	73.1	83.2
	to piped sewer system					to piped sewer system	3.5	3.3	3.4
	to septic tank					to septic tank	84.0	52.6	68.4
	to pit					to pit	5.0	16.4	10.6
	to unknown place/ not sure/DK					to unknown place/ not sure/DK	0.7	0.2	0.1
	to elsewhere					to elsewhere	0.7	0.6	0.7
	Flush/toilets	92.6	64.3			Flush/toilets	93.3	73.1	83.2
	to piped sewer system				Flush to piped sewer system	to piped sewer system	3.5	3.3	3.4
	to septic tank				Flush to septic tank	to septic tank	84.0	52.6	68.4
	to pit				Flush to pit latrine	to pit	5.0	16.4	10.6
	to unknown place/ not sure/DK				Flush to don't know where	to unknown place/ not sure/DK	0.1	0.2	0.1
	to elsewhere				Flush to somewhere else	to elsewhere	0.7	0.6	0.7
Flush toilet: own	Private flush/toilet	76.7	53.6			Private flush/toilet			
	to piped sewer system					to piped sewer system			
	to septic tank					to septic tank			
	to pit					to pit			
	to unknown place/ not sure/DK					to unknown place/ not sure/DK			
	to elsewhere					to elsewhere			
Flush toilet: shared	Public/shared flush/toilet	15.9	10.7			Public/shared flush/toilet			
	to piped sewer system					to piped sewer system			
	to septic tank					to septic tank			
	to pit					to pit			
	to unknown place/ not sure/DK					to unknown place/ not sure/DK			
	to elsewhere					to elsewhere			
	Latrines	3.4	20.3			Latrines	2.6	10.8	6.7
	Pour flush latrines					Pour flush latrines			
	to piped sewer system					to piped sewer system			
	to septic tank					to septic tank			
	to pit					to pit			
	to unknown place/ not sure/DK					to unknown place/ not sure/DK			
	to elsewhere					to elsewhere			
	Private pour flush latrine					Private pour flush latrine			
	to piped sewer system					to piped sewer system			
	to septic tank					to septic tank			
	to pit					to pit			
	to unknown place/ not sure/DK					to unknown place/ not sure/DK			
	to elsewhere					to elsewhere			
	Public/shared pour flush latrine					Public/shared pour flush latrine			
	to piped sewer system					to piped sewer system			
	to septic tank					to septic tank			
	to pit					to pit			
	to unknown place/ not sure/DK					to unknown place/ not sure/DK			
	to elsewhere					to elsewhere			
	Dry latrines	3.4	20.3			Dry latrines	2.6	10.8	6.7
	Improved latrines	1.5	10.7			Improved latrines	1.0	5.4	3.2
	Ventilated Improved Pit latrine				Pit latrine - Ventilated improved pit	Ventilated Improved Pit latrine	0.4	1.7	1.1
Close pit	Pit latrine with slab/covered latrine	1.5	10.7		Pit latrine with slab	Pit latrine with slab/covered latrine	0.6	3.7	2.1
	Traditional latrine					Traditional latrine			
Open pit	Pit latrine without slab/open pit	0.8	6.8		Pit latrine without slab/open pit	Pit latrine without slab/open pit	1.1	3.5	2.3
Drop/overhang	Hanging toilet/hanging latrine	1.1	2.8		Drop/Hanging toilet	Hanging toilet/hanging latrine	0.4	1.7	1.1
	Bucket latrine				Bucket toilet	Bucket latrine	0.1	0.2	0.1
	Other					Other			
	Private Latrines					Private Latrines			
	Ventilated Improved Pit latrine					Ventilated Improved Pit latrine			
	Pit latrine with slab/covered latrine					Pit latrine with slab/covered latrine			
	Traditional latrine					Traditional latrine			
	Pit latrine without slab/open pit					Pit latrine without slab/open pit			
	Hanging toilet/hanging latrine					Hanging toilet/hanging latrine			
	Bucket latrine					Bucket latrine			
	Other					Other			
	Public/shared Latrines					Public/shared Latrines			
	Ventilated Improved Pit latrine					Ventilated Improved Pit latrine			
	Pit latrine with slab/covered latrine					Pit latrine with slab/covered latrine			
	Traditional latrine					Traditional latrine			
	Pit latrine without slab/open pit					Pit latrine without slab/open pit			
	Hanging toilet/hanging latrine					Hanging toilet/hanging latrine			
	Bucket latrine					Bucket latrine			
	Other					Other			
	Composting toilets				Composting toilet	Composting toilets	0.2	0.8	0.5
	Composting toilet (private)					Composting toilet (private)			
	Composting toilet (shared)					Composting toilet (shared)			
	Other improved					Other improved			
	Other					Other			
	Other					Other			
No toilet/field/bush	No facility, bush, field	3.9	15.4		No facility, bush, field, river	No facility, bush, field	3.9	15.3	9.6
	Other unimproved	0.1	0.1		Other	Other unimproved	0.0	0.0	0.0
Other	Other	0.1	0.1		Other	Other	0.0	0.0	0.0
	Other					Other			
	DK/missing information				Missing	DK/missing information	0.0	0.0	0.0
	Total	100.0	100.1			Total	100.0	100.0	100.0
Calculations					Calculations				
Estimations					Estimations				
	sewerage connections based on WHS03	7.6	2.0						
Access to improved sanitation :		94%	75%		Access to improved sanitation :		94%	79%	86%
Access to sewerage connections :		8%	2%		Access to sewerage connections :		4%	3%	3%
Used for the estimates		Yes	Yes		Used for the estimates		Yes	Yes	
Used for the estimates		Yes	Yes		Used for the estimates		Yes	Yes	
Ratios	Shared improved facilities/all improved facilities	44%	53%		Shared improved facilities/all improved facilities	18.6%	23.4%		
	Improved latrine / All latrines	44%	53%		Improved latrine / All latrines	38%	50%		48%
	Covered dry latrines / All dry latrines	44%	53%		Covered dry latrines / All dry latrines	23%	34%		
	VIP / All latrines				VIP / All latrines	15%	16%		
	Traditional latrines / All latrines				Traditional latrines / All latrines				
	Improved + traditional latrines / All latrines				Improved + traditional latrines / All latrines				
	Sewerage connection among flush/pour flush				Sewerage connection among flush/pour flush	3.8	4.5		
Sewerage connection among flush				Sewerage connection among flush	3.8	4.5			
Number of people covered by the survey:					Number of people covered by the survey:				
Number of households covered by the survey:					Number of households covered by the survey:				
Total population:					Total population:				
Comments					Comments				

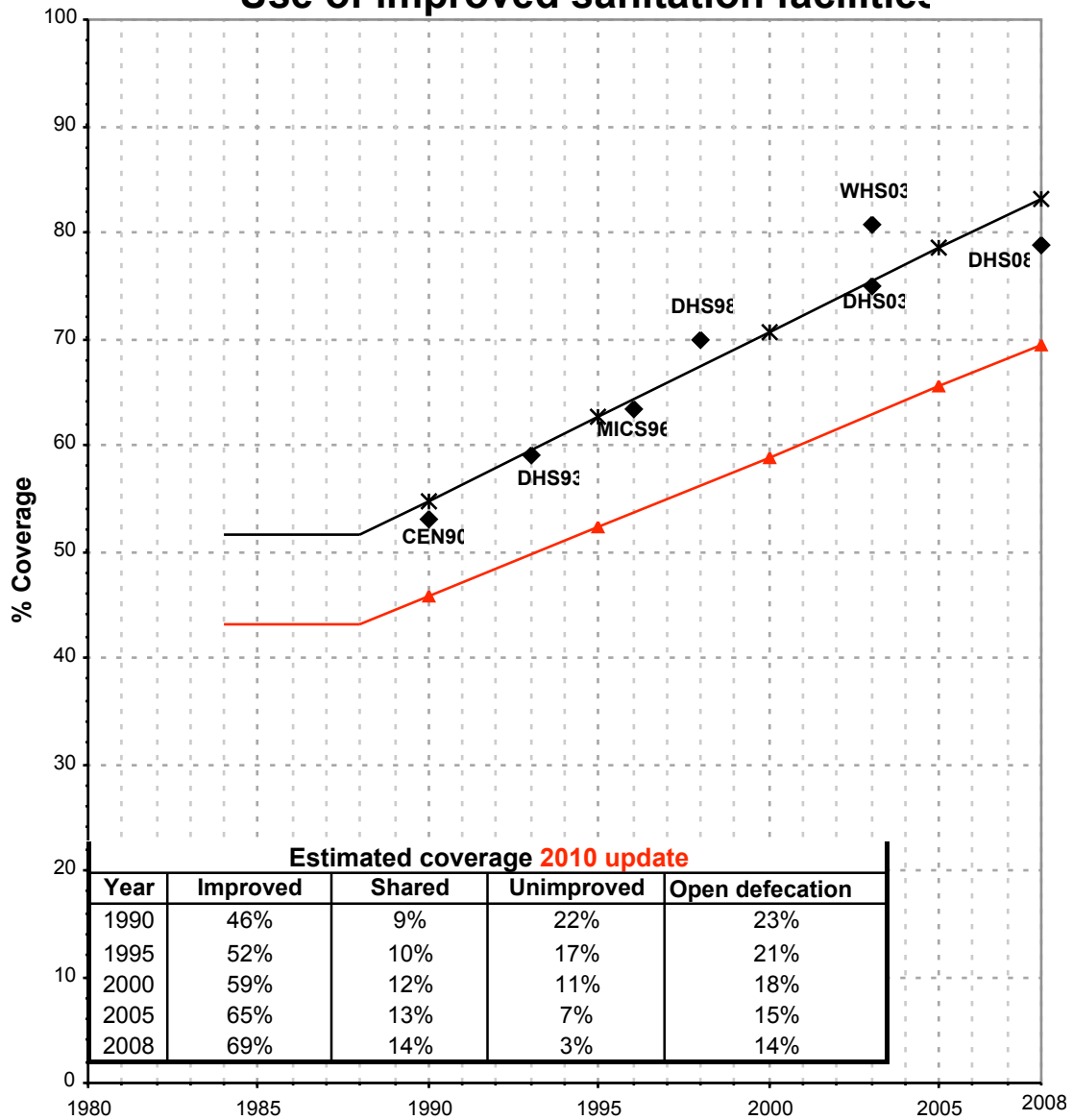
Philippines			SANITATION															
			URBAN								RURAL							
			Sewer connection		Total		Open defecation		Shared		Sewer connection		Total		Open defecation		Shared	
Source	Code	Year	Used	Not used	Used	Not used	Used	Not used	Used	Not used	Used	Not used	Used	Not used	Used	Not used	Used	Not used
National Census	CEN90	1990			83.6		8.3						53.0		22.5			
Demographic and Health Survey	DHS93	1993	4.9		83.1		5.8		16.5		1.0		59.0		20.1		13.8	
Multiple Indicator Cluster Survey	MICS96	1996	5.5		88.5		9.4				1.0		63.3		26.5			
Demographic and Health Survey	DHS98	1998	5.6		92.3		3.6				1.2		69.8		17.0			
Global Water Supply and Sanitation Assessment 2000.	JMP99	1999		2.9		92.3						0.0		69.8				
World Health Survey	WHS03	2003	7.1		91.0		6.7		14.1		2.2		80.8		14.1		12.4	
Demographic and Health Survey	DHS03	2003	7.6		94.1		3.9				2.0		75.0		15.4			
Demographic and Health Survey	DHS08	2008	3.5		93.8		3.9		18.6		3.3		78.7		15.3		23.4	

Philippines - urban - Use of improved sanitation facilities



■ Used for the estimates * Estimates ▲ JMP 2010 estimate

Philippines - rural - Use of improved sanitation facilities



◆ Used for the estimates ✱ Estimates ▲ JMP 2010 estimate

Sanitation

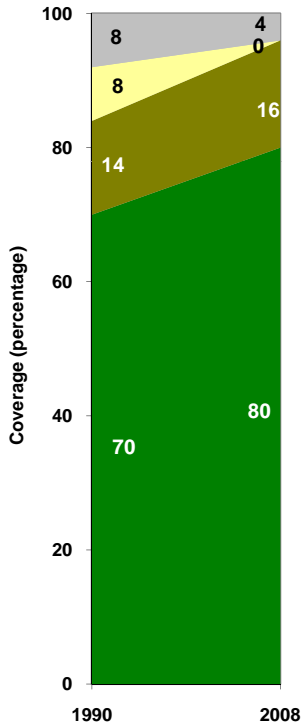
Philippines	Sanitation coverage estimates					
	Urban (%)		Rural (%)		Total (%)	
	1990	2008	1990	2008	1990	2008
Improved facilities	70	80	46	69	58	76
Shared facilities	14	16	9	14	11	15
Unimproved facilities	8	0	22	3	15	1
Open defecation	8	4	23	14	16	8

Source: WHO/UNICEF JMP, 2010

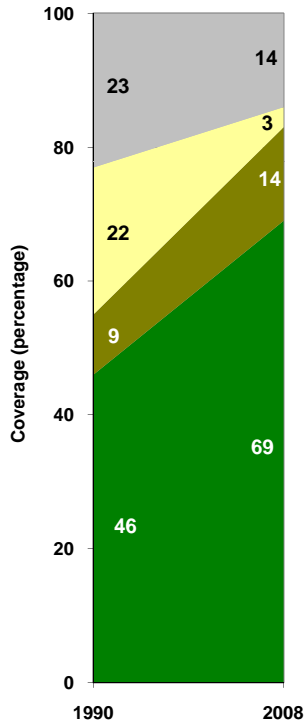
Philippines	Urban		Rural		Total	
	1990	2008	1990	2008	1990	2008
Population (x1000)	30,450	58,699	31,978	31,649	62,427	90,348

Source: UN / Population Division, 2008

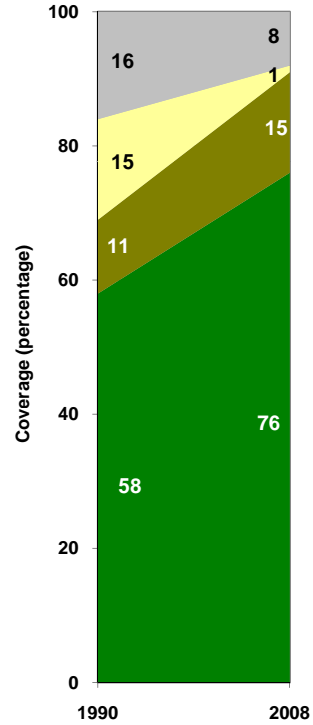
Urban sanitation trends



Rural sanitation trends



Total sanitation trends



- Open defecation
- Unimproved facilities
- Shared facilities
- Improved facilities

- Open defecation
- Unimproved facilities
- Shared facilities
- Improved facilities

- Open defecation
- Unimproved facilities
- Shared facilities
- Improved facilities