

WHO / UNICEF

Joint Monitoring Programme
for Water Supply and Sanitation

Estimates for the use of

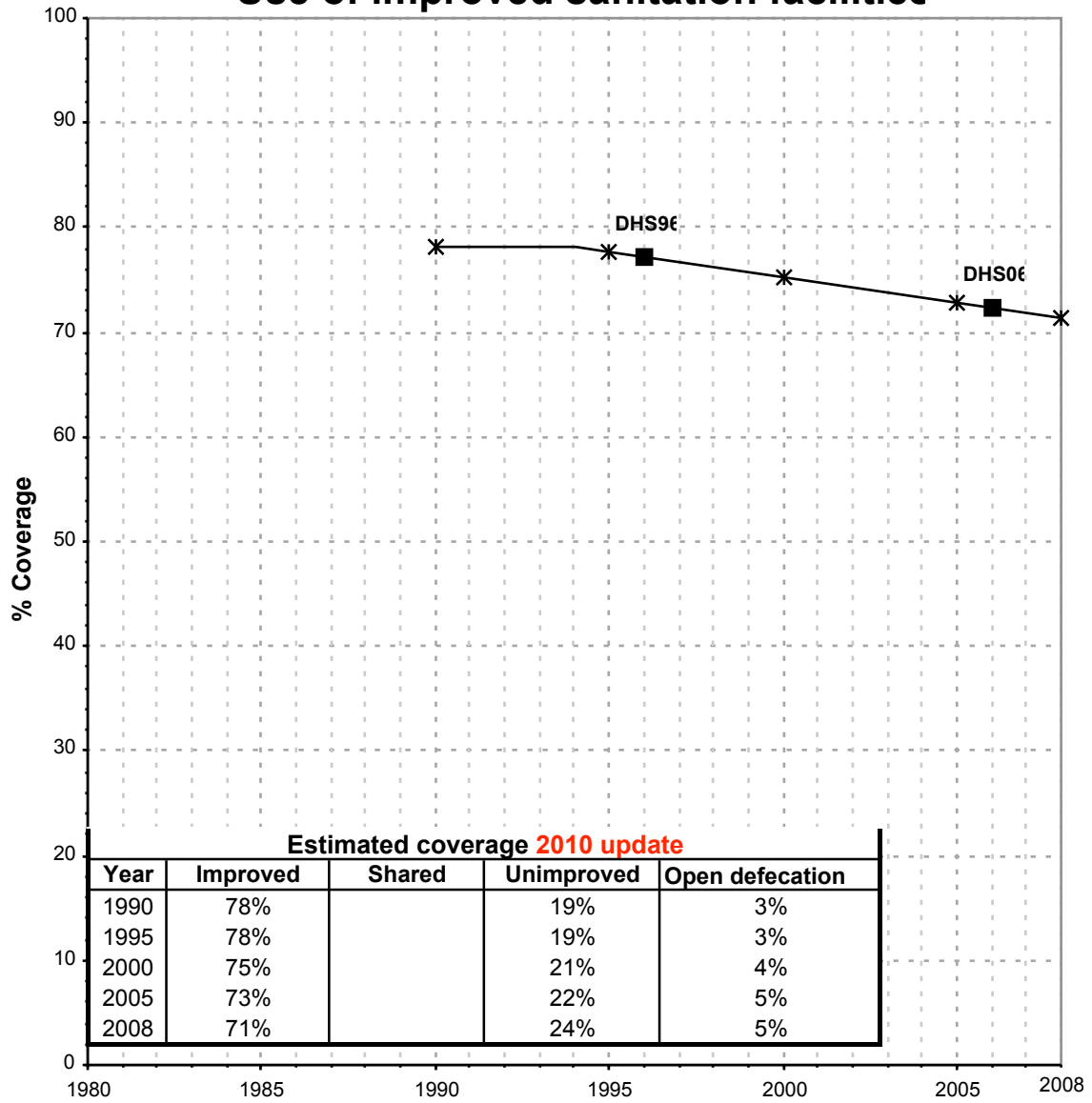
**Improved Drinking-Water Sources
and Improved Sanitation Facilities**

Updated March 2010

childinfo.org

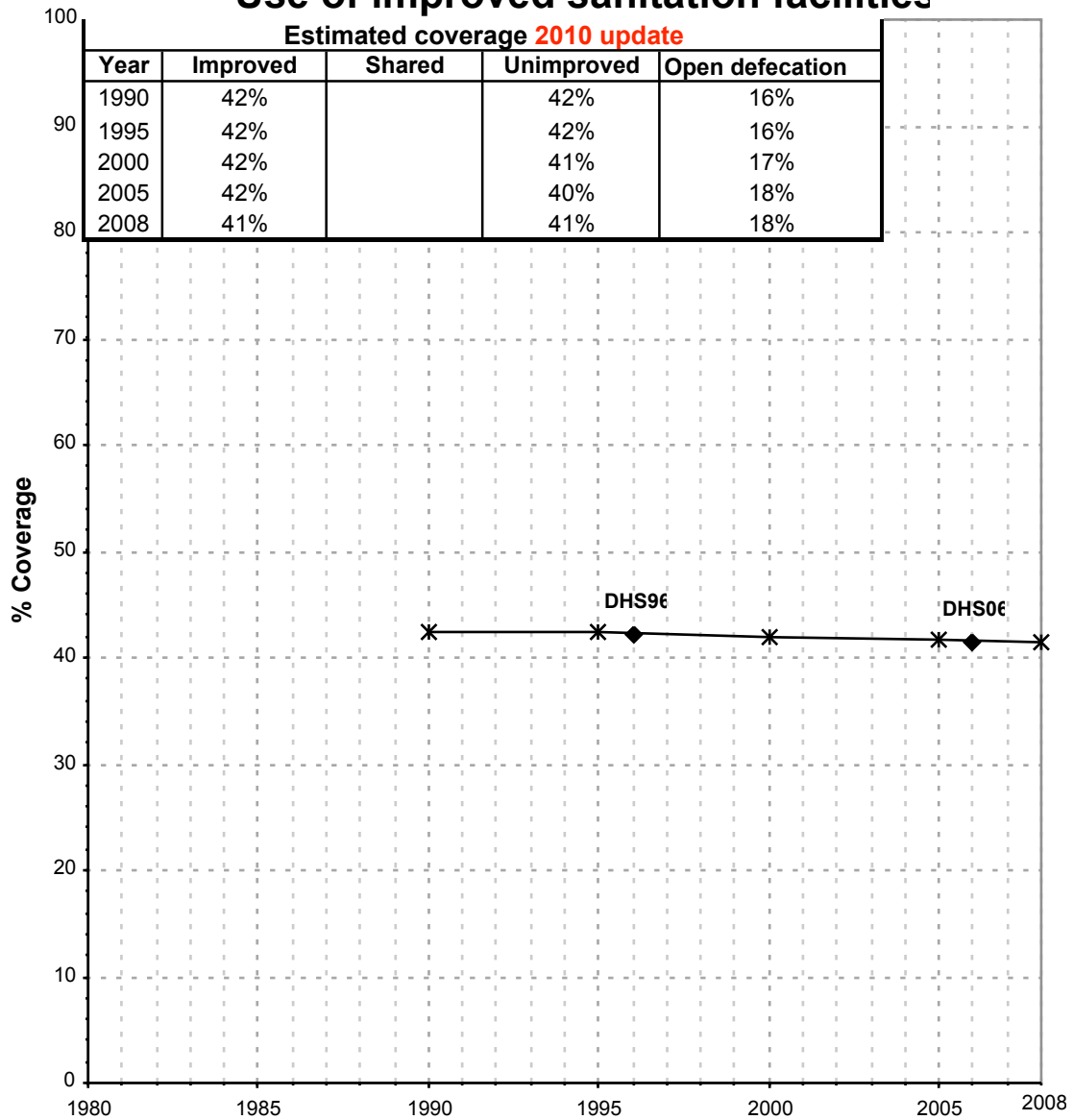
Papua New Guinea			SANITATION															
			URBAN								RURAL							
			Sewer connection		Total		Open defecation		Shared		Sewer connection		Total		Open defecation		Shared	
Source	Code	Year	Used	Not used	Used	Not used	Used	Not used	Used	Not used	Used	Not used	Used	Not used	Used	Not used	Used	Not used
Demographic and Health Survey	DHS96	1996			77.2		3.1						42.3		16.3			
Demographic and Health Survey	DHS06	2006			72.4		4.8						41.6		17.7			

Papua New Guinea - urban - Use of improved sanitation facilities



■ Used for the estimates * Estimates ▲ JMP 2010 estimate

Papua New Guinea - rural - Use of improved sanitation facilities



◆ Used for the estimates *— Estimates ▲ JMP 2010 estimate

Sanitation

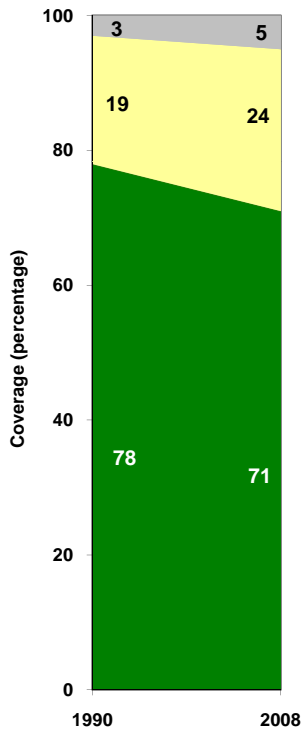
Papua New Guinea	Sanitation coverage estimates					
	Urban (%)		Rural (%)		Total (%)	
	1990	2008	1990	2008	1990	2008
Improved facilities	78	71	42	41	47	45
Shared facilities						
Unimproved facilities	19	24	42	41	39	39
Open defecation	3	5	16	18	14	16

Source: WHO/UNICEF JMP, 2010

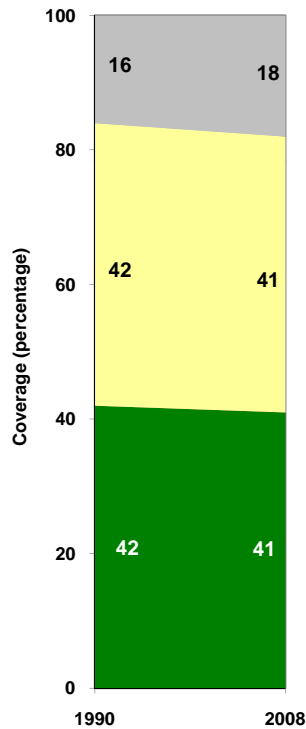
Papua New Guinea	Urban		Rural		Total	
	1990	2008	1990	2008	1990	2008
Population (x1000)	619	821	3,512	5,756	4,131	6,577

Source: UN / Population Division, 2008

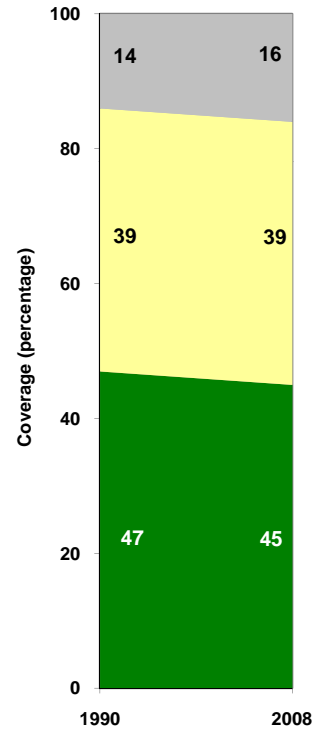
Urban sanitation trends



Rural sanitation trends



Total sanitation trends



- Open defecation
- Unimproved facilities
- Shared facilities
- Improved facilities

- Open defecation
- Unimproved facilities
- Shared facilities
- Improved facilities

- Open defecation
- Unimproved facilities
- Shared facilities
- Improved facilities