

**WHO / UNICEF**

**Joint Monitoring Programme**  
for Water Supply and Sanitation

Estimates for the use of

**Improved Drinking-Water Sources  
and Improved Sanitation Facilities**

Updated March 2010

[childinfo.org](http://childinfo.org)

Use of sanitation facilities		DHS90			Nigeria			Use of sanitation facilities		CEN96			Nigeria		
Demographic and Health Survey					1990			Census					1996		
Original denomination	Classification	Urban	Rural	Total	Original denomination	Classification	Urban	Rural	Total						
	<b>Flush and pour flush</b>	29.9	2.1	9.1		<b>Flush and pour flush</b>	14.1	2.0							
	to piped sewer system					to piped sewer system									
	to septic tank					to septic tank									
	to pit					to pit									
	to unknown place/ not sure/DK					to unknown place/ not sure/DK									
	to elsewhere					to elsewhere									
Flush	<b>Flush/toilets</b>	29.9	2.1	9.1	Water closet	<b>Flush/toilets</b>	14.1	2.0							
	to piped sewer system					to piped sewer system									
	to septic tank					to septic tank									
	to pit					to pit									
	to unknown place/ not sure/DK					to unknown place/ not sure/DK									
	to elsewhere					to elsewhere									
	<b>Private flush/toilet</b>					<b>Private flush/toilet</b>									
	to piped sewer system					to piped sewer system									
	to septic tank					to septic tank									
	to pit					to pit									
	to unknown place/ not sure/DK					to unknown place/ not sure/DK									
	to elsewhere					to elsewhere									
	<b>Public/shared flush/toilet</b>					<b>Public/shared flush/toilet</b>									
	to piped sewer system					to piped sewer system									
	to septic tank					to septic tank									
	to pit					to pit									
	to unknown place/ not sure/DK					to unknown place/ not sure/DK									
	to elsewhere					to elsewhere									
	<b>Latrines</b>	61.9	62.5	62.3		<b>Latrines</b>	80.1	44.2							
	<b>Pour flush latrines</b>					<b>Pour flush latrines</b>									
	to piped sewer system					to piped sewer system									
	to septic tank					to septic tank									
	to pit					to pit									
	to unknown place/ not sure/DK					to unknown place/ not sure/DK									
	to elsewhere					to elsewhere									
	<b>Private pour flush latrine</b>					<b>Private pour flush latrine</b>									
	to piped sewer system					to piped sewer system									
	to septic tank					to septic tank									
	to pit					to pit									
	to unknown place/ not sure/DK					to unknown place/ not sure/DK									
	to elsewhere					to elsewhere									
	<b>Public/shared pour flush latrine</b>					<b>Public/shared pour flush latrine</b>									
	to piped sewer system					to piped sewer system									
	to septic tank					to septic tank									
	to pit					to pit									
	to unknown place/ not sure/DK					to unknown place/ not sure/DK									
	to elsewhere					to elsewhere									
	<b>Dry latrines</b>	61.9	62.5	62.3		<b>Dry latrines</b>	80.1	44.2							
	<b>Improved latrines</b>					<b>Improved latrines</b>									
	Ventilated Improved Pit latrine					Ventilated Improved Pit latrine									
	Pit latrine with slab/covered latrine					Pit latrine with slab/covered latrine									
Pit	Traditional latrine	60.4	62.2	61.7	Pit Latrine	Traditional latrine	74.1	42.0							
	Pit latrine without slab/open pit					Pit latrine without slab/open pit									
	Hanging toilet/hanging latrine				Toilet on water	Hanging toilet/hanging latrine	3.0	2.1							
Bucket	Bucket latrine	1.5	0.3	0.6	Pail	Bucket latrine	3.0	0.1							
	Other					Other									
	<b>Private Latrines</b>					<b>Private Latrines</b>									
	Ventilated Improved Pit latrine					Ventilated Improved Pit latrine									
	Pit latrine with slab/covered latrine					Pit latrine with slab/covered latrine									
	Traditional latrine					Traditional latrine									
	Pit latrine without slab/open pit					Pit latrine without slab/open pit									
	Hanging toilet/hanging latrine					Hanging toilet/hanging latrine									
	Bucket latrine					Bucket latrine									
	Other					Other									
	<b>Public/shared Latrines</b>					<b>Public/shared Latrines</b>									
	Ventilated Improved Pit latrine					Ventilated Improved Pit latrine									
	Pit latrine with slab/covered latrine					Pit latrine with slab/covered latrine									
	Traditional latrine					Traditional latrine									
	Pit latrine without slab/open pit					Pit latrine without slab/open pit									
	Hanging toilet/hanging latrine					Hanging toilet/hanging latrine									
	Bucket latrine					Bucket latrine									
	Other					Other									
	<b>Composting toilets</b>					<b>Composting toilets</b>									
	Composting toilet (private)					Composting toilet (private)									
	Composting toilet (shared)					Composting toilet (shared)									
	<b>Other improved</b>					<b>Other improved</b>									
	Other					Other									
	Other					Other									
No facilities	<b>No facility, bush, field</b>	8.1	35.5	28.5	Bush/Dung hill	<b>No facility, bush, field</b>	4.0	52.0							
	<b>Other unimproved</b>					<b>Other unimproved</b>									
	Other					Other									
	Other					Other									
	<b>DK/missing information</b>					<b>DK/missing information</b>									
	<b>Total</b>	99.9	100.1	99.9		<b>Total</b>	98.2	98.2							
<b>Calculations</b>					<b>Calculations</b>										
	Pit considered improved based on CLS00	49.5	45.9			Pit latrine considered improved based on CLS00	60.8	31.0							
<b>Estimations</b>					<b>Estimations</b>										
	SC, based on NLSS04	12.6	1.0			SC, based on NLSS04	5.9	1.0							
<b>Access to improved sanitation : 79% 48% 9%</b>					<b>Access to improved sanitation : 75% 33%</b>										
<b>Access to sewerage connections : 13% 1%</b>					<b>Access to sewerage connections : 6% 1%</b>										
Used for the estimates Yes Yes					Used for the estimates No No										
Used for the estimates Yes Yes					Used for the estimates No No										
<b>Ratios</b>	Shared improved facilities/all improved facilities				<b>Ratios</b>	Shared improved facilities/all improved facilities									
	Improved latrine / All latrines					Improved latrine / All latrines									
	Covered dry latrines / All dry latrines					Covered dry latrines / All dry latrines									
	VIP / All latrines					VIP / All latrines									
	Traditional latrines / All latrines	98%	100%	99%		Traditional latrines / All latrines	92%	95%							
	Improved + traditional latrines / All latrines					Improved + traditional latrines / All latrines									
	Sewerage connection among flush/pour flush					Sewerage connection among flush/pour flush									
	Sewerage connection among flush					Sewerage connection among flush									
	Number of people covered by the survey					Number of people covered by the survey									
	Number of households covered by the survey					Number of households covered by the survey									
	Total population					Total population									
<b>Comments</b>					<b>Comments</b>	NOTE: Census was in 1991. Data seem to be from the 1992 Genral Household Survey.									



Use of sanitation facilities		DHS99			Nigeria			Use of sanitation facilities		JMP99			Nigeria		
Demographic and Health Survey					1999			Global Water Supply and Sanitation Assessment 2000.					1999		
								Water Supply and Sanitation Sector Questionnaire - 1999. Form 6 sent to WHO.							
Original denomination	Classification	Urban	Rural	Total	Original denomination	Classification	Urban	Rural	Total						
	<b>Flush and pour flush</b>	30.6	4.3	12.2		<b>Flush and pour flush</b>	0.0	0.0							
	to piped sewer system				Population served with household connections to conventional	to piped sewer system	0.0	0.0							
	to septic tank					to septic tank									
	to pit					to pit									
	to unknown place/ not sure/DK					to unknown place/ not sure/DK									
	to elsewhere					to elsewhere									
	<b>Flush/toilets</b>	30.6	4.3	12.2		<b>Flush/toilets</b>									
	to piped sewer system					to piped sewer system									
	to septic tank					to septic tank									
	to pit					to pit									
	to unknown place/ not sure/DK					to unknown place/ not sure/DK									
	to elsewhere					to elsewhere									
Own water closet	<b>Private flush/toilet</b>	20.7	2.9	8.3		<b>Private flush/toilet</b>									
	to piped sewer system					to piped sewer system									
	to septic tank					to septic tank									
	to pit					to pit									
	to unknown place/ not sure/DK					to unknown place/ not sure/DK									
	to elsewhere					to elsewhere									
Shared flush toilet (W.C.)	<b>Public/shared flush/toilet</b>	9.9	1.4	3.9		<b>Public/shared flush/toilet</b>									
	to piped sewer system					to piped sewer system									
	to septic tank					to septic tank									
	to pit					to pit									
	to unknown place/ not sure/DK					to unknown place/ not sure/DK									
	to elsewhere					to elsewhere									
	<b>Latrines</b>	55.5	62.0	60.0		<b>Latrines</b>									
	<b>Pour flush latrines</b>					<b>Pour flush latrines</b>									
	to piped sewer system					to piped sewer system									
	to septic tank					to septic tank									
	to pit					to pit									
	to unknown place/ not sure/DK					to unknown place/ not sure/DK									
	to elsewhere					to elsewhere									
	<b>Private pour flush latrine</b>					<b>Private pour flush latrine</b>									
	to piped sewer system					to piped sewer system									
	to septic tank					to septic tank									
	to pit					to pit									
	to unknown place/ not sure/DK					to unknown place/ not sure/DK									
	to elsewhere					to elsewhere									
	<b>Public/shared pour flush latrine</b>					<b>Public/shared pour flush latrine</b>									
	to piped sewer system					to piped sewer system									
	to septic tank					to septic tank									
	to pit					to pit									
	to unknown place/ not sure/DK					to unknown place/ not sure/DK									
	to elsewhere					to elsewhere									
	<b>Dry latrines</b>	55.5	62.0	60.0		<b>Dry latrines</b>									
	<b>Improved latrines</b>	8.8	5.2	6.3		<b>Improved latrines</b>									
Ventilated Improved pit latrine	Ventilated Improved Pit latrine					Ventilated Improved Pit latrine									
	Pit latrine with slab/covered latrine					Pit latrine with slab/covered latrine									
Traditional pit latrine	Traditional latrine	46.4	56.7	53.6		Traditional latrine									
	Pit latrine without slab/open pit					Pit latrine without slab/open pit									
	Hanging toilet/hanging latrine					Hanging toilet/hanging latrine									
Bucket toilet	Bucket latrine	0.3	0.1	0.1		Bucket latrine									
	Other					Other									
	<b>Private Latrines</b>					<b>Private Latrines</b>									
	Ventilated Improved Pit latrine					Ventilated Improved Pit latrine									
	Pit latrine with slab/covered latrine					Pit latrine with slab/covered latrine									
	Traditional latrine					Traditional latrine									
	Pit latrine without slab/open pit					Pit latrine without slab/open pit									
	Hanging toilet/hanging latrine					Hanging toilet/hanging latrine									
	Bucket latrine					Bucket latrine									
	Other					Other									
	<b>Public/shared Latrines</b>					<b>Public/shared Latrines</b>									
	Ventilated Improved Pit latrine					Ventilated Improved Pit latrine									
	Pit latrine with slab/covered latrine					Pit latrine with slab/covered latrine									
	Traditional latrine					Traditional latrine									
	Pit latrine without slab/open pit					Pit latrine without slab/open pit									
	Hanging toilet/hanging latrine					Hanging toilet/hanging latrine									
	Bucket latrine					Bucket latrine									
	Other					Other									
	<b>Composting toilets</b>					<b>Composting toilets</b>									
	Composting toilet (private)					Composting toilet (private)									
	Composting toilet (shared)					Composting toilet (shared)									
	<b>Other improved</b>				Population without household connections but served	<b>Other improved</b>	50.5	39.0							
	Other					Other									
No facility/bush/field/river	<b>No facility, bush, field</b>	12.3	32.1	26.1		<b>No facility, bush, field</b>									
	<b>Other unimproved</b>	0.6	0.1	0.3	Total population unserved	<b>Other unimproved</b>	49.5	61.0							
Other	Other	0.6	0.1	0.3		Other									
	Other					Other									
Missing	<b>DK/missing information</b>	1.2	1.5	1.4		<b>DK/missing information</b>									
	<b>Total</b>	100.2	100.0	100.0		<b>Total</b>	100.0	100.0							
<b>Calculations</b>					<b>Calculations</b>										
<b>Estimations</b>					<b>Estimations</b>										
	Traditional pit latrine considered improved based on CLS00	40.9	43.6												
	SC, based on NLSS04	12.9	2.1												
<b>Access to improved sanitation :</b>		<b>80%</b>	<b>53%</b>	<b>19%</b>	<b>Access to improved plus shared sanitation:</b>		<b>50%</b>	<b>39%</b>							
<b>Access to sewerage connections :</b>		<b>13%</b>	<b>2%</b>		<b>Access to sewerage connections :</b>		<b>0%</b>	<b>0%</b>							
Used for the estimates		Yes	Yes		Used for the estimates		No	No							
Used for the estimates		Yes	Yes		Used for the estimates		No	No							
<b>Ratios</b>	Shared improved facilities/all improved facilities				<b>Ratios</b>	Shared improved facilities/all improved facilities									
	Improved latrine / All latrines	16%	8%	11%		Improved latrine / All latrines									
	Covered dry latrines / All dry latrines					Covered dry latrines / All dry latrines									
	VIP / All latrines	16%	8%			VIP / All latrines									
	Traditional latrines / All latrines	84%	91%	89%		Traditional latrines / All latrines									
	Improved + traditional latrines / All latrines	99%	100%	100%		Improved + traditional latrines / All latrines									
	Sewerage connection among flush/pour flush					Sewerage connection among flush/pour flush									
Sewerage connection among flush				Sewerage connection among flush											
Number of people covered by the survey					Number of people covered by the survey										
Number of households covered by the survey					Number of households covered by the survey										
Total population					Total population		52280	52280							
<b>Comments</b>					<b>Comments</b>										

Use of sanitation facilities		CLS00			Nigeria			Use of sanitation facilities		DHS03			Nigeria		
Child Labour Survey								Demographic and Health Survey							
Federal Office of Statistics					2000								2003		
Original denomination	Classification	Urban	Rural	Total	Original denomination	Classification	Urban	Rural	Total						
	<b>Flush and pour flush</b>	24.5	2.6	10.4		<b>Flush and pour flush</b>	27.8	5.6							
	to piped sewer system					to piped sewer system									
	to septic tank					to septic tank									
	to pit					to pit									
	to unknown place/ not sure/DK					to unknown place/ not sure/DK									
	to elsewhere					to elsewhere									
Water closet	<b>Flush/toilets</b>	24.5	2.6	10.4	Flush toilet	<b>Flush/toilets</b>	27.8	5.6							
	to piped sewer system					to piped sewer system									
	to septic tank					to septic tank									
	to pit					to pit									
	to unknown place/ not sure/DK					to unknown place/ not sure/DK									
	to elsewhere					to elsewhere									
	<b>Private flush/toilet</b>					<b>Private flush/toilet</b>									
	to piped sewer system					to piped sewer system									
	to septic tank					to septic tank									
	to pit					to pit									
	to unknown place/ not sure/DK					to unknown place/ not sure/DK									
	to elsewhere					to elsewhere									
	<b>Public/shared flush/toilet</b>					<b>Public/shared flush/toilet</b>									
	to piped sewer system					to piped sewer system									
	to septic tank					to septic tank									
	to pit					to pit									
	to unknown place/ not sure/DK					to unknown place/ not sure/DK									
	to elsewhere					to elsewhere									
	<b>Latrines</b>	67.3	66.2	66.7		<b>Latrines</b>	63.3	61.8							
	<b>Pour flush latrines</b>					<b>Pour flush latrines</b>									
	to piped sewer system					to piped sewer system									
	to septic tank					to septic tank									
	to pit					to pit									
	to unknown place/ not sure/DK					to unknown place/ not sure/DK									
	to elsewhere					to elsewhere									
	<b>Private pour flush latrine</b>					<b>Private pour flush latrine</b>									
	to piped sewer system					to piped sewer system									
	to septic tank					to septic tank									
	to pit					to pit									
	to unknown place/ not sure/DK					to unknown place/ not sure/DK									
	to elsewhere					to elsewhere									
	<b>Public/shared pour flush latrine</b>					<b>Public/shared pour flush latrine</b>									
	to piped sewer system					to piped sewer system									
	to septic tank					to septic tank									
	to pit					to pit									
	to unknown place/ not sure/DK					to unknown place/ not sure/DK									
	to elsewhere					to elsewhere									
	<b>Dry latrines</b>	67.3	66.2	66.7		<b>Dry latrines</b>	63.3	61.8							
	<b>Improved latrines</b>	56.0	49.1	51.6		<b>Improved latrines</b>	5.2	1.7							
VIP latrine	Ventilated Improved Pit latrine	0.8	0.3	0.5	Ventilated improved pit (vip)	Ventilated Improved Pit latrine	5.2	1.7							
Covered pit	Pit latrine with slab/covered latrine	55.2	48.8	51.1	Traditional pit toilet	Pit latrine with slab/covered latrine									
	Traditional latrine					Traditional latrine	58.1	60.1							
Uncovered pit	Pit latrine without slab/open pit	7.4	14.7	12.1		Pit latrine without slab/open pit									
Toilet on waters	Hanging toilet/hanging latrine	3.0	2.0	2.4		Hanging toilet/hanging latrine									
Pail	Bucket latrine	0.9	0.4	0.6		Bucket latrine									
	Other					Other									
	<b>Private Latrines</b>					<b>Private Latrines</b>									
	Ventilated Improved Pit latrine					Ventilated Improved Pit latrine									
	Pit latrine with slab/covered latrine					Pit latrine with slab/covered latrine									
	Traditional latrine					Traditional latrine									
	Pit latrine without slab/open pit					Pit latrine without slab/open pit									
	Hanging toilet/hanging latrine					Hanging toilet/hanging latrine									
	Bucket latrine					Bucket latrine									
	Other					Other									
	<b>Public/shared Latrines</b>					<b>Public/shared Latrines</b>									
	Ventilated Improved Pit latrine					Ventilated Improved Pit latrine									
	Pit latrine with slab/covered latrine					Pit latrine with slab/covered latrine									
	Traditional latrine					Traditional latrine									
	Pit latrine without slab/open pit					Pit latrine without slab/open pit									
	Hanging toilet/hanging latrine					Hanging toilet/hanging latrine									
	Bucket latrine					Bucket latrine									
	Other					Other									
	<b>Composting toilets</b>					<b>Composting toilets</b>									
	Composting toilet (private)					Composting toilet (private)									
	Composting toilet (shared)					Composting toilet (shared)									
	<b>Other improved</b>					<b>Other improved</b>									
	Other					Other									
Bush Dung/Hill	<b>No facility, bush, field</b>	6.2	31.2	23.0	Bush/field/river	<b>No facility, bush, field</b>	8.7	32.5							
	<b>Other unimproved</b>				Other	<b>Other unimproved</b>	0.1	0.0							
	Other					Other	0.1	0.0							
	Other					Other									
	<b>DK/missing information</b>					<b>DK/missing information</b>									
	<b>Total</b>	100.0	100.0	100.1		<b>Total</b>	99.9	99.9							
<b>Calculations</b>					<b>Calculations</b>										
<b>Estimations</b>					<b>Estimations</b>										
	SC, based on NLSS04	10.3	1.2	0.0		SC, based on NLSS04	11.7	2.7							
<b>Access to improved sanitation :</b>		<b>81%</b>	<b>52%</b>	<b>62%</b>	<b>Access to improved sanitation :</b>		<b>75%</b>	<b>51%</b>							
<b>Access to sewerage connections :</b>		<b>10%</b>	<b>1%</b>	<b>0%</b>	<b>Access to sewerage connections :</b>		<b>12%</b>	<b>3%</b>							
Used for the estimates		Yes	Yes		Used for the estimates		Yes	Yes							
Used for the estimates		Yes	Yes		Used for the estimates		Yes	Yes							
<b>Ratios</b>	Shared improved facilities/all improved facilities				<b>Ratios</b>	Shared improved facilities/all improved facilities	44.5%	35.6%							
	Improved latrine / All latrines	83%	74%	77%		Improved latrine / All latrines	8%	3%							
	Covered dry latrines / All dry latrines	82%	74%			Covered dry latrines / All dry latrines									
	VIP / All latrines	1%	0%			VIP / All latrines	8%	3%							
	Covered latrines/traditional latrines	88%	77%			Traditional latrines / All latrines	92%	97%							
	Improved + traditional latrines / All latrines					Improved + traditional latrines / All latrines	100%	100%							
	Sewerage connection among flush/pour flush					Sewerage connection among flush/pour flush									
	Sewerage connection among flush					Sewerage connection among flush									
	Number of people covered by the survey					Number of people covered by the survey									
	Number of households covered by the survey					Number of households covered by the survey									
	Total population					Total population									
<b>Comments</b>					<b>Comments</b>										

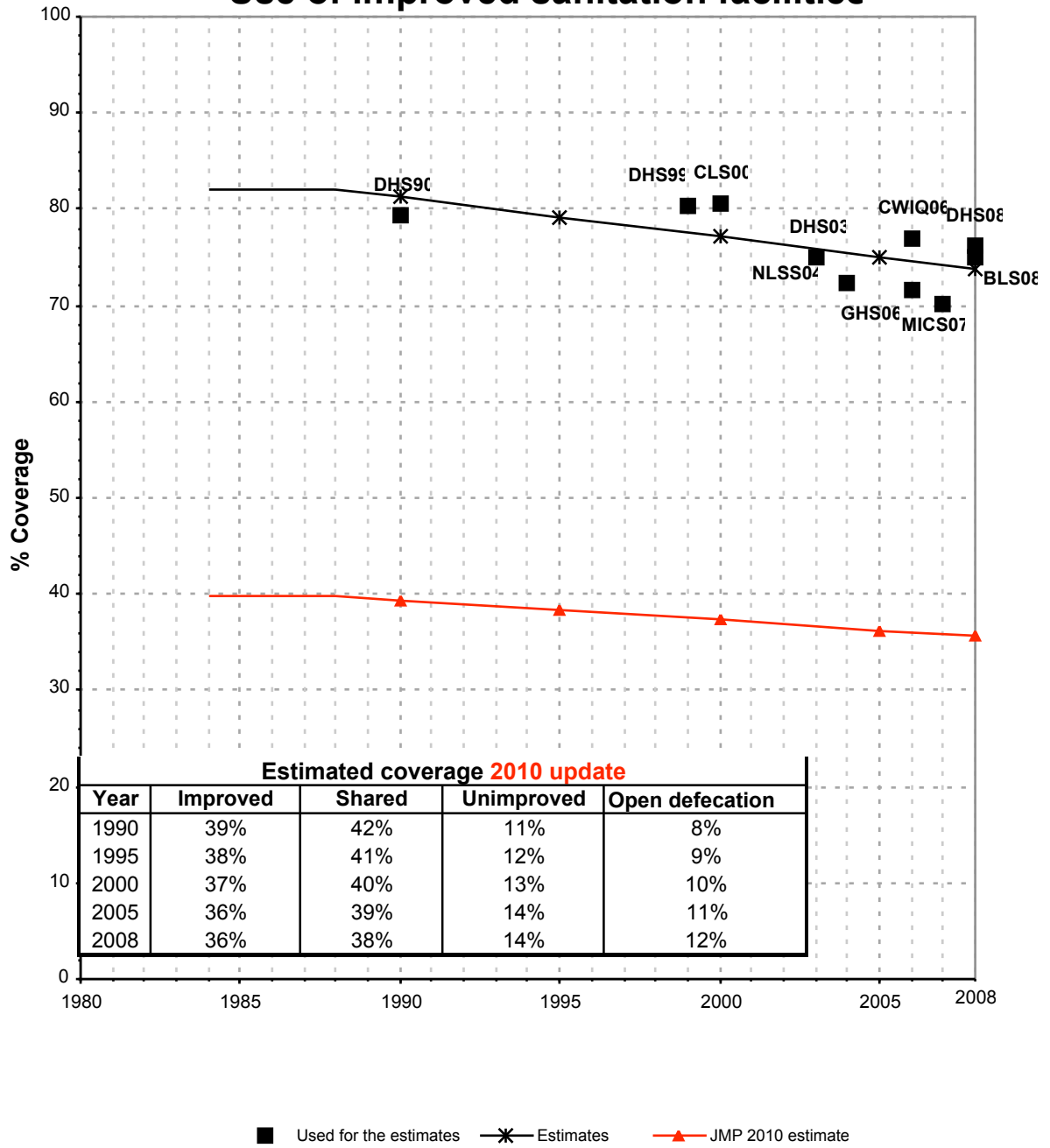


Use of sanitation facilities		GHS06			Nigeria			Use of sanitation facilities		MICS07			Nigeria		
General Household Survey					Multiple Cluster Indicator Survey					preliminary data					
					2006					2007					
Original denomination	Classification				Urban	Rural	Total	Original denomination	Classification				Urban	Rural	Total
	<b>Flush and pour flush</b>				33.2	3.3	11.6		<b>Flush and pour flush</b>				39.9	6.6	
Flush to sewer	to piped sewer system				12.7	1.1	4.4		to piped sewer system				10.3	1.1	
Flush to septic tank	to septic tank				20.5	2.2	7.4		to septic tank				16.3	1.9	
	to pit								to pit				12.9	3.7	
	to unknown place/ not sure/DK								to unknown place/ not sure/DK				0.0	0.0	
	to elsewhere								to elsewhere				0.4	0.1	
	<b>Flush/toilets</b>								<b>Flush/toilets</b>				39.9	6.6	
	to piped sewer system							Flush to piped sewer system	to piped sewer system				10.3	1.1	
	to septic tank							Flush to septic tank	to septic tank				16.3	1.9	
	to pit							Flush to pit (latrine)	to pit				12.9	3.7	
	to unknown place/ not sure/DK							Flush to unknown place/not sure/DK where	to unknown place/ not sure/DK				0.0	0.0	
	to elsewhere							Flush to somewhere else	to elsewhere				0.4	0.1	
	<b>Private flush/toilet</b>								<b>Private flush/toilet</b>						
	to piped sewer system								to piped sewer system						
	to septic tank								to septic tank						
	to pit								to pit						
	to unknown place/ not sure/DK								to unknown place/ not sure/DK						
	to elsewhere								to elsewhere						
	<b>Public/shared flush/toilet</b>								<b>Public/shared flush/toilet</b>						
	to piped sewer system								to piped sewer system						
	to septic tank								to septic tank						
	to pit								to pit						
	to unknown place/ not sure/DK								to unknown place/ not sure/DK						
	to elsewhere								to elsewhere						
	<b>Latrines</b>				52.5	62.3	59.6		<b>Latrines</b>				45.3	57.3	
	<b>Pour flush latrines</b>								<b>Pour flush latrines</b>						
	to piped sewer system								to piped sewer system						
	to septic tank								to septic tank						
	to pit								to pit						
	to unknown place/ not sure/DK								to unknown place/ not sure/DK						
	to elsewhere								to elsewhere						
	<b>Private pour flush latrine</b>								<b>Private pour flush latrine</b>						
	to piped sewer system								to piped sewer system						
	to septic tank								to septic tank						
	to pit								to pit						
	to unknown place/ not sure/DK								to unknown place/ not sure/DK						
	to elsewhere								to elsewhere						
	<b>Public/shared pour flush latrine</b>								<b>Public/shared pour flush latrine</b>						
	to piped sewer system								to piped sewer system						
	to septic tank								to septic tank						
	to pit								to pit						
	to unknown place/ not sure/DK								to unknown place/ not sure/DK						
	to elsewhere								to elsewhere						
	<b>Dry latrines</b>				52.5	62.3	59.6		<b>Dry latrines</b>				45.3	57.3	
	<b>Improved latrines</b>				38.5	37.6	37.9		<b>Improved latrines</b>				30.5	24.2	
VIP latrine	Vented Improved Pit latrine				1.3	0.7	0.9	Vented Improved Pit latrine (VIP)	Vented Improved Pit latrine				1.5	0.4	
Covered pit latrine	Pit latrine with slab/covered latrine				37.2	36.9	37.0	Pit latrine with slab	Pit latrine with slab/covered latrine				29.0	23.7	
	Traditional latrine								Traditional latrine						
Uncovered pit latrine	Pit latrine without slab/open pit				8.7	21.4	17.8	Pit latrine without slab/open pit	Pit latrine without slab/open pit				14.2	31.7	
Toilet on water	Hanging toilet/hanging latrine				5.1	3.1	3.7	Hanging toilet/hanging latrine	Hanging toilet/hanging latrine				0.6	1.4	
Pail/bucket	Bucket latrine				0.2	0.2	0.2	Bucket	Bucket latrine				0.0	0.0	
	Other								Other						
	<b>Private Latrines</b>								<b>Private Latrines</b>						
	Vented Improved Pit latrine								Vented Improved Pit latrine						
	Pit latrine with slab/covered latrine								Pit latrine with slab/covered latrine						
	Traditional latrine								Traditional latrine						
	Pit latrine without slab/open pit								Pit latrine without slab/open pit						
	Hanging toilet/hanging latrine								Hanging toilet/hanging latrine						
	Bucket latrine								Bucket latrine						
	Other								Other						
	<b>Public/shared Latrines</b>								<b>Public/shared Latrines</b>						
	Vented Improved Pit latrine								Vented Improved Pit latrine						
	Pit latrine with slab/covered latrine								Pit latrine with slab/covered latrine						
	Traditional latrine								Traditional latrine						
	Pit latrine without slab/open pit								Pit latrine without slab/open pit						
	Hanging toilet/hanging latrine								Hanging toilet/hanging latrine						
	Bucket latrine								Bucket latrine						
	Other								Other						
	<b>Composting toilets</b>							Composting toilet	<b>Composting toilets</b>				0.0	0.1	
	Composting toilet (private)								Composting toilet (private)						
	Composting toilet (shared)								Composting toilet (shared)						
	<b>Other improved</b>								<b>Other improved</b>						
	Other								Other						
	Other								Other						
	<b>No facility, bush, field</b>				14.3	34.4	28.7	No facilities or bush or field	<b>No facility, bush, field</b>				13.6	33.9	
	<b>Other unimproved</b>				8.0	20.6	17.0	Other	<b>Other unimproved</b>				1.2	1.8	
None	Other				6.3	13.8	11.7		Other				1.2	1.8	
Other	Other								Other						
	<b>DK/missing information</b>								<b>DK/missing information</b>						
	<b>Total</b>				100.0	100.0	100.1		<b>Total</b>				100.0	100.0	
<b>Calculations</b>								<b>Calculations</b>							
<b>Estimations</b>								<b>Estimations</b>							
<b>Access to improved sanitation :</b>					72%	41%	50%	<b>Access to improved sanitation :</b>					70%	31%	
<b>Access to sewerage connections :</b>					13%	1%	4%	<b>Access to sewerage connections :</b>					10%	1%	
Used for the estimates					Yes	Yes		Used for the estimates					Yes	Yes	
Used for the estimates					Yes	Yes		Used for the estimates					Yes	Yes	
<b>Ratios</b>	Shared improved facilities/all improved facilities				73%	60%	64%	Shared improved facilities/all improved facilities				55.0%	27.0%		
	Improved latrine / All latrines				71%	59%		Improved latrine / All latrines				67%	42%		
	Covered dry latrines / All dry latrines				2%	1%		Covered dry latrines / All dry latrines				64%	41%		
	VIP / All latrines							VIP / All latrines				3%	1%		
	Traditional latrines / All latrines							Traditional latrines / All latrines				67%	43%		
	Improved + traditional latrines / All latrines							Improved + traditional latrines / All latrines				135%	85%		
	Sewerage connection among flush/pour flush				38.3	33.3		Sewerage connection among flush/pour flush				25.9	15.9		
Sewerage connection among flush							Sewerage connection among flush				25.9	15.9			
Number of people covered by the survey								Number of people covered by the survey							
Number of households covered by the survey								Number of households covered by the survey							
Total population								Total population							
<b>Comments</b>								<b>Comments</b>							

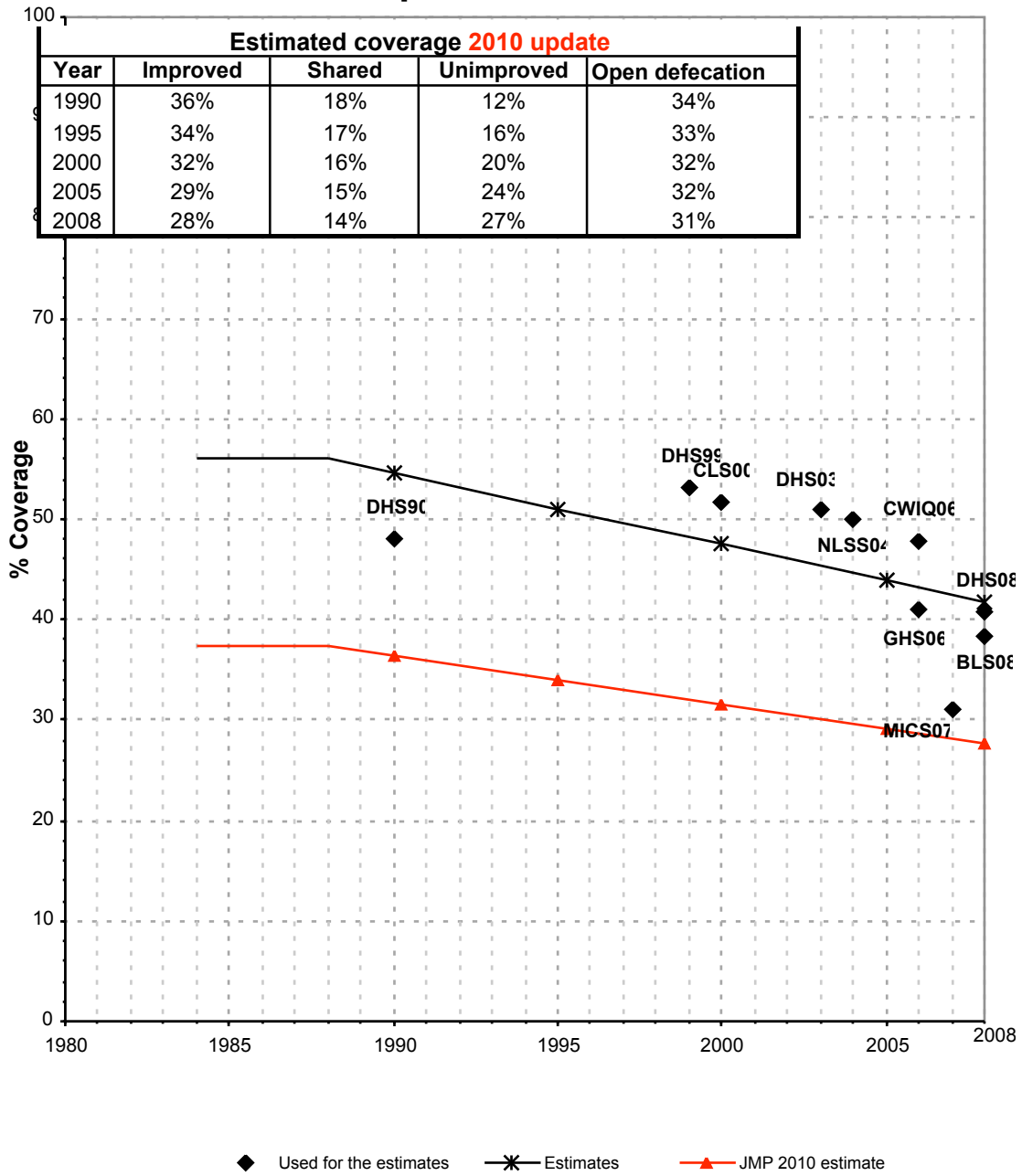
Use of sanitation facilities		BLS08			Nigeria			Use of sanitation facilities		DHS08			Nigeria		
Nigeria Water Supply and Sanitation Baseline Survey					Demographic and Health Survey										
Ministry of Agriculture and water Resources					2008										
Original denomination	Classification	Urban	Rural	Total	Original denomination	Classification	Urban	Rural	Total	Original denomination	Classification	Urban	Rural	Total	
	<b>Flush and pour flush</b>	<b>38.0</b>	<b>5.7</b>	<b>43.7</b>		<b>Flush and pour flush</b>	<b>39.6</b>	<b>7.1</b>	<b>46.7</b>		<b>Flush and pour flush</b>	<b>39.6</b>	<b>7.1</b>	<b>46.7</b>	
Septic system	to piped sewer system				Flush to piped sewer system	to piped sewer system	10.7	1.6	12.3	Flush to piped sewer system	to piped sewer system	10.7	1.6	12.3	
	to septic tank	1.9	0.3	2.2	Flush to septic tank	to septic tank	21.9	4.0	25.9	Flush to septic tank	to septic tank	21.9	4.0	25.9	
	to pit				Flush to pit latrine	to pit	6.6	1.4	8.0	Flush to pit latrine	to pit	6.6	1.4	8.0	
	to unknown place/ not sure/DK				Flush to don't know where	to unknown place/ not sure/DK	0.1	0.0	0.1	Flush to don't know where	to unknown place/ not sure/DK	0.1	0.0	0.1	
	to elsewhere				Flush to somewhere else	to elsewhere	0.3	0.1	0.4	Flush to somewhere else	to elsewhere	0.3	0.1	0.4	
Water closets	<b>Flush/toilets</b>	<b>36.1</b>	<b>5.4</b>	<b>41.5</b>		<b>Flush/toilets</b>					<b>Flush/toilets</b>				
	to piped sewer system					to piped sewer system					to piped sewer system				
	to septic tank					to septic tank					to septic tank				
	to pit					to pit					to pit				
	to unknown place/ not sure/DK					to unknown place/ not sure/DK					to unknown place/ not sure/DK				
	to elsewhere					to elsewhere					to elsewhere				
	<b>Private flush/toilet</b>					<b>Private flush/toilet</b>					<b>Private flush/toilet</b>				
	to piped sewer system					to piped sewer system					to piped sewer system				
	to septic tank					to septic tank					to septic tank				
	to pit					to pit					to pit				
	to unknown place/ not sure/DK					to unknown place/ not sure/DK					to unknown place/ not sure/DK				
	to elsewhere					to elsewhere					to elsewhere				
	<b>Public/shared flush/toilet</b>					<b>Public/shared flush/toilet</b>					<b>Public/shared flush/toilet</b>				
	to piped sewer system					to piped sewer system					to piped sewer system				
	to septic tank					to septic tank					to septic tank				
	to pit					to pit					to pit				
	to unknown place/ not sure/DK					to unknown place/ not sure/DK					to unknown place/ not sure/DK				
	to elsewhere					to elsewhere					to elsewhere				
	<b>Latrines</b>	<b>54.2</b>	<b>69.3</b>	<b>123.5</b>		<b>Latrines</b>	<b>46.5</b>	<b>49.7</b>	<b>96.2</b>		<b>Latrines</b>	<b>46.5</b>	<b>49.7</b>	<b>96.2</b>	
	<b>Pour flush latrines</b>					<b>Pour flush latrines</b>					<b>Pour flush latrines</b>				
	to piped sewer system					to piped sewer system					to piped sewer system				
	to septic tank					to septic tank					to septic tank				
	to pit					to pit					to pit				
	to unknown place/ not sure/DK					to unknown place/ not sure/DK					to unknown place/ not sure/DK				
	to elsewhere					to elsewhere					to elsewhere				
	<b>Private pour flush latrine</b>					<b>Private pour flush latrine</b>					<b>Private pour flush latrine</b>				
	to piped sewer system					to piped sewer system					to piped sewer system				
	to septic tank					to septic tank					to septic tank				
	to pit					to pit					to pit				
	to unknown place/ not sure/DK					to unknown place/ not sure/DK					to unknown place/ not sure/DK				
	to elsewhere					to elsewhere					to elsewhere				
	<b>Public/shared pour flush latrine</b>					<b>Public/shared pour flush latrine</b>					<b>Public/shared pour flush latrine</b>				
	to piped sewer system					to piped sewer system					to piped sewer system				
	to septic tank					to septic tank					to septic tank				
	to pit					to pit					to pit				
	to unknown place/ not sure/DK					to unknown place/ not sure/DK					to unknown place/ not sure/DK				
	to elsewhere					to elsewhere					to elsewhere				
	<b>Dry latrines</b>	<b>54.2</b>	<b>69.3</b>	<b>123.5</b>		<b>Dry latrines</b>	<b>46.5</b>	<b>49.7</b>	<b>96.2</b>		<b>Dry latrines</b>	<b>46.5</b>	<b>49.7</b>	<b>96.2</b>	
	<b>Improved latrines</b>	<b>2.3</b>	<b>1.1</b>	<b>3.4</b>		<b>Improved latrines</b>	<b>36.9</b>	<b>33.6</b>	<b>70.5</b>		<b>Improved latrines</b>	<b>36.9</b>	<b>33.6</b>	<b>70.5</b>	
VIP latrines	Ventilated Improved Pit latrine	2.3	1.1	3.4	Pit latrine - ventilated improved pit (VIP)	Ventilated Improved Pit latrine	21.9	22.0	43.9	Ventilated Improved Pit latrine	Ventilated Improved Pit latrine	21.9	22.0	43.9	
Sanplat latrines	Pit latrine with slab/covered latrine	7.1	11.5	18.6	Pit latrine with slab	Pit latrine with slab/covered latrine	15.0	11.6	26.6	Pit latrine with slab/covered latrine	Pit latrine with slab/covered latrine	15.0	11.6	26.6	
Simple pit latrine (covered)	Traditional latrine	37.1	41.2	78.3	Traditional latrine	Traditional latrine				Traditional latrine	Traditional latrine				
Uncovered pit latrines	Pit latrine without slab/open pit	6.7	13.0	19.7	Pit latrine without slab/open pit	Pit latrine without slab/open pit	7.8	14.3	22.1	Pit latrine without slab/open pit	Pit latrine without slab/open pit	7.8	14.3	22.1	
Toilet on water	Hanging toilet/hanging latrine	0.9	2.4	3.3	Hanging toilet/latrine	Hanging toilet/hanging latrine	1.7	1.7	3.4	Hanging toilet/hanging latrine	Hanging toilet/hanging latrine	1.7	1.7	3.4	
Service or bucket latrines	Bucket latrine	0.1	0.1	0.2	Bucket toilet	Bucket latrine	0.1	0.1	0.2	Bucket latrine	Bucket latrine	0.1	0.1	0.2	
	Other				Other	Other				Other	Other				
	<b>Private Latrines</b>					<b>Private Latrines</b>					<b>Private Latrines</b>				
	Ventilated Improved Pit latrine					Ventilated Improved Pit latrine					Ventilated Improved Pit latrine				
	Pit latrine with slab/covered latrine					Pit latrine with slab/covered latrine					Pit latrine with slab/covered latrine				
	Traditional latrine					Traditional latrine					Traditional latrine				
	Pit latrine without slab/open pit					Pit latrine without slab/open pit					Pit latrine without slab/open pit				
	Hanging toilet/hanging latrine					Hanging toilet/hanging latrine					Hanging toilet/hanging latrine				
	Bucket latrine					Bucket latrine					Bucket latrine				
	Other					Other					Other				
	<b>Public/shared Latrines</b>	<b>0.0</b>	<b>0.0</b>	<b>0.0</b>		<b>Public/shared Latrines</b>					<b>Public/shared Latrines</b>				
	Ventilated Improved Pit latrine					Ventilated Improved Pit latrine					Ventilated Improved Pit latrine				
	Pit latrine with slab/covered latrine					Pit latrine with slab/covered latrine					Pit latrine with slab/covered latrine				
	Traditional latrine					Traditional latrine					Traditional latrine				
	Pit latrine without slab/open pit					Pit latrine without slab/open pit					Pit latrine without slab/open pit				
	Hanging toilet/hanging latrine					Hanging toilet/hanging latrine					Hanging toilet/hanging latrine				
	Bucket latrine					Bucket latrine					Bucket latrine				
	Other					Other					Other				
	<b>Composting toilets</b>				Composting toilet	<b>Composting toilets</b>	<b>0.0</b>	<b>0.1</b>	<b>0.1</b>	Composting toilet	<b>Composting toilets</b>	<b>0.0</b>	<b>0.1</b>	<b>0.1</b>	
	Composting toilet (private)					Composting toilet (private)					Composting toilet (private)				
	Composting toilet (shared)					Composting toilet (shared)					Composting toilet (shared)				
	<b>Other improved</b>	<b>1.2</b>	<b>2.2</b>	<b>3.4</b>		<b>Other improved</b>					<b>Other improved</b>				
Public server	Other	0.1	0.1	0.2		Other					Other				
Public latrines	Other	1.1	2.1	3.2		Other					Other				
None (bush or any other hidden places)	<b>No facility, bush, field</b>	<b>5.7</b>	<b>22.7</b>	<b>28.4</b>	No facility	<b>No facility, bush, field</b>	<b>13.6</b>	<b>42.4</b>	<b>56.0</b>	No facility	<b>No facility, bush, field</b>	<b>13.6</b>	<b>42.4</b>	<b>56.0</b>	
	<b>Other unimproved</b>	<b>0.9</b>	<b>0.2</b>	<b>1.1</b>		<b>Other unimproved</b>	<b>0.5</b>	<b>0.8</b>	<b>1.3</b>		<b>Other unimproved</b>	<b>0.5</b>	<b>0.8</b>	<b>1.3</b>	
Sullage disposal system	Other	0.6	0.1	0.7	Other	Other	0.5	0.8	1.3	Other	Other	0.5	0.8	1.3	
Storm water disposal system	Other	0.3	0.1	0.4		Other					Other				
	<b>DK/missing information</b>					<b>DK/missing information</b>					<b>DK/missing information</b>				
	<b>Total</b>	<b>100.0</b>	<b>100.1</b>	<b>200.1</b>		<b>Total</b>	<b>100.2</b>	<b>100.1</b>	<b>200.3</b>		<b>Total</b>	<b>100.2</b>	<b>100.1</b>	<b>200.3</b>	
<b>Calculations</b>					<b>Calculations</b>					<b>Calculations</b>					
<b>Estimations</b>					<b>Estimations</b>					<b>Estimations</b>					
	Dry latrines estimates to be improved based on DHS08	33.5	29.4												
	SC, based on NLSS04	16.0	2.7	18.7											
<b>Access to improved sanitation : 75% 38% 16%</b>					<b>Access to improved sanitation : 76% 41% 53%</b>										
<b>Access to sewerage connections : 16% 3% 0%</b>					<b>Access to sewerage connections : 11% 2% 5%</b>										
Used for the estimates <b>Yes Yes</b>					Used for the estimates <b>yes yes</b>										
Used for the estimates <b>Yes Yes</b>					Used for the estimates <b>yes yes</b>										
	Shared improved facilities/all improved facilities					Shared improved facilities/all improved facilities	55.5%	37.8%			Shared improved facilities/all improved facilities	55.5%	37.8%		
	Improved latrine / All latrines	4%	2%	2%		Improved latrine / All latrines	79%	68%	72%		Improved latrine / All latrines	79%	68%	72%	
	Covered dry latrines / All dry latrines	13%	17%			Covered dry latrines / All dry latrines	32%	23%			Covered dry latrines / All dry latrines	32%	23%		
	VIP / All latrines	4%	2%			VIP / All latrines	47%	44%			VIP / All latrines	47%	44%		
	Traditional latrines / All latrines	68%	69%	61%		Traditional latrines / All latrines	66%	45%			Traditional latrines / All latrines	66%	45%		
	Improved + traditional latrines / All latrines	73%	61%	63%		Improved + traditional latrines / All latrines	145%	112%			Improved + traditional latrines / All latrines	145%	112%		
	Sewerage connection among flush/pour flush					Sewerage connection among flush/pour flush	27.0	22.5			Sewerage connection among flush/pour flush	27.0	22.5		
	Sewerage connection among flush					Sewerage connection among flush					Sewerage connection among flush				
	Number of people covered by the survey					Number of people covered by the survey					Number of people covered by the survey				
	Number of households covered by the survey					Number of households covered by the survey					Number of households covered by the survey				
	Total population					Total population					Total population				
<b>Comments</b>					<b>Comments</b>					<b>Comments</b>					

Nigeria			SANITATION															
			URBAN								RURAL							
			Sewer connection		Total		Open defecation		Shared		Sewer connection		Total		Open defecation		Shared	
Source	Code	Year	Used	Not used	Used	Not used	Used	Not used	Used	Not used	Used	Not used	Used	Not used	Used	Not used	Used	Not used
Demographic and Health Survey	DHS90	1990	12.6		79.4		8.1				1.0		48.0		35.5			
Census	CEN96	1996		5.9		74.8		4.0				1.0		33.0		52.0		
Multiple Indicator Cluster Survey	MICS95	1995																
Multiple Indicator Cluster Survey	MICS99	1999		29.4		70.3		13.8				5.7		36.0		37.2		
Demographic and Health Survey	DHS99	1999	12.9		80.3		12.3				2.1		53.1		32.1			
Global Water Supply and Sanitation Assessment 2000.	JMP99	1999		0.0		50.5						0.0		39.0				
Child Labour Survey	CLS00	2000	10.3		80.5		8.2				1.2		51.7		31.2			
Demographic and Health Survey	DHS03	2003	11.7		75.1		8.7		44.5		2.7		50.9		32.5		35.6	
Nigerian Living Standard Survey	NLSS04	2004	10.6		72.4		10.2				1.2		50.0		26.9			
Core Welfare Indicator Questionnaire	CWIQ06	2006	10.6		77.0		12.1				1.9		47.7		28.3			
General Household Survey	GHS06	2006	12.7		71.7		14.3				1.1		40.9		34.4			
Multiple Cluster Indicator Survey	MICS07	2007	10.3		70.1		13.6		55.0		1.1		31.0		33.9		27.0	
Nigeria Water Supply and Sanitation Baseline Survey	BLS08	2008	16.0		75.0		5.7				2.7		38.4		22.7			
Demographic and Health Survey	DHS08	2008	10.7		76.2		13.6		55.5		1.6		40.7		42.4		37.8	

# Nigeria - urban - Use of improved sanitation facilities



# Nigeria - rural - Use of improved sanitation facilities



# Sanitation

Nigeria	Sanitation coverage estimates					
	Urban (%)		Rural (%)		Total (%)	
	1990	2008	1990	2008	1990	2008
Improved facilities	39	36	36	28	37	32
Shared facilities	42	38	18	14	26	26
Unimproved facilities	11	14	12	27	12	20
Open defecation	8	12	34	31	25	22

Source: WHO/UNICEF JMP, 2010

Nigeria	Urban		Rural		Total	
	1990	2008	1990	2008	1990	2008
Population (x1000)	34,343	73,123	62,995	78,089	97,338	151,212

Source: UN / Population Division, 2008

