

WHO / UNICEF

Joint Monitoring Programme
for Water Supply and Sanitation

Estimates for the use of

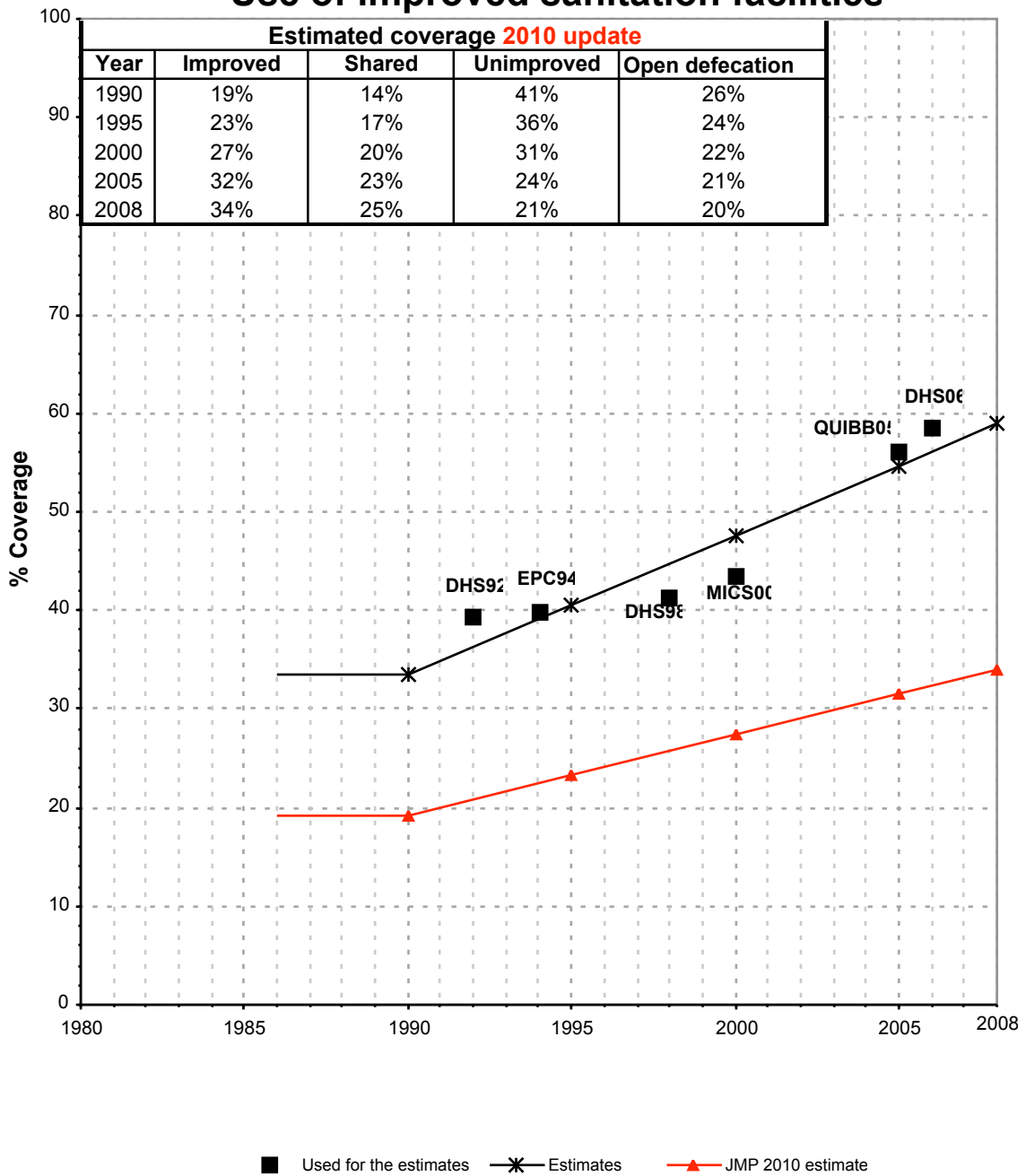
**Improved Drinking-Water Sources
and Improved Sanitation Facilities**

Updated March 2010

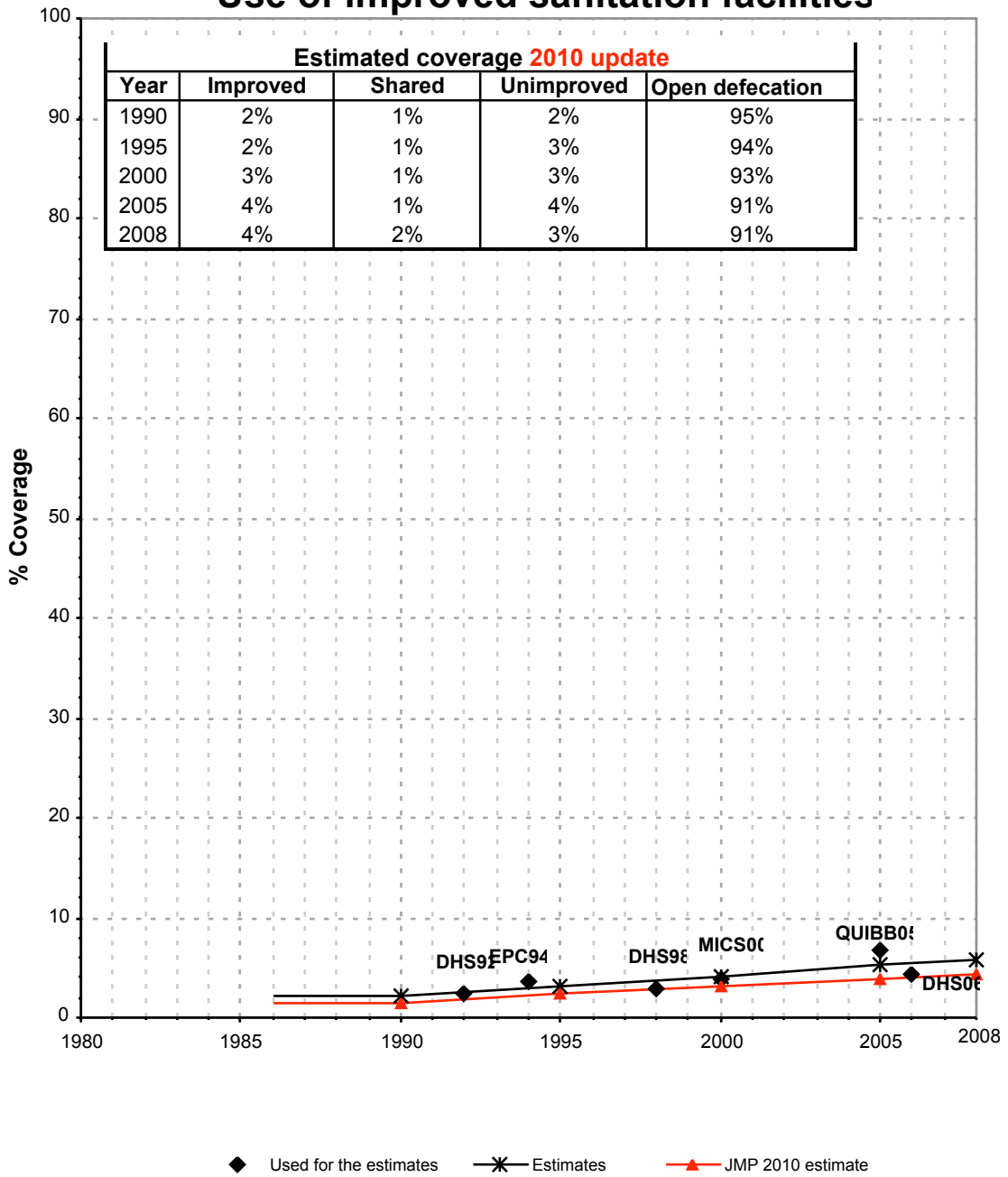
childinfo.org

Niger			SANITATION																
			URBAN								RURAL								
			Sewer connection		Total		Open defecation		Shared		Sewer connection		Total		Open defecation		Shared		
Source	Code	Year	Used	Not used	Used	Not used	Used	Not used	Used	Not used	Used	Not used	Used	Not used	Used	Not used	Used	Not used	
Demographic and Health Survey	DHS92	1992			39.4		27.2						2.4		95.3				
National Census	CEN97	1997																	
Demographic and Health Survey	DHS98	1998			41.3		20.3						2.8		94.1				
Global Water Supply and Sanitation Assessment 2000.	JMP99	1999	0.0			79.2					0.0			5.4					
Multiple Indicator Cluster Survey	MICS00	2000			43.6		19.0						3.8		91.4				
Demographic and Health Survey	DHS06	2006			58.6		21.2		42.4				4.5		93.3		26.3		
Enquête permanente de la conjoncture économique et sociale	EPC94	1994			39.8		25.1						3.7		92.9				
Questionnaire Unifié sur les Indicateurs de Base de Bien-Etre	QUIBB05	2005	4.0		56.1		23.7				1.1		6.8		89.6				
Enquete Nationale sur le Budget et la consommation des Menages	ENBC08	2008																	
Enquete Nationale Nutrition et Survie d'Enfant	NSE08	2008																	

Niger - urban - Use of improved sanitation facilities



Niger - rural - Use of improved sanitation facilities



Sanitation

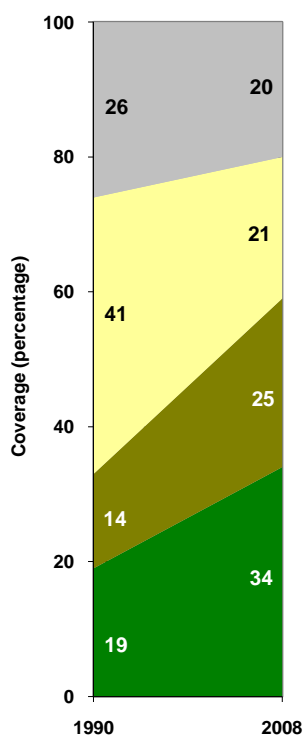
Niger	Sanitation coverage estimates					
	Urban (%)		Rural (%)		Total (%)	
	1990	2008	1990	2008	1990	2008
Improved facilities	19	34	2	4	5	9
Shared facilities	14	25	1	2	3	6
Unimproved facilities	41	21	2	3	8	6
Open defecation	26	20	95	91	84	79

Source: WHO/UNICEF JMP, 2010

Niger	Urban		Rural		Total	
	1990	2008	1990	2008	1990	2008
Population (x1000)	1,215	2,421	6,689	12,283	7,904	14,704

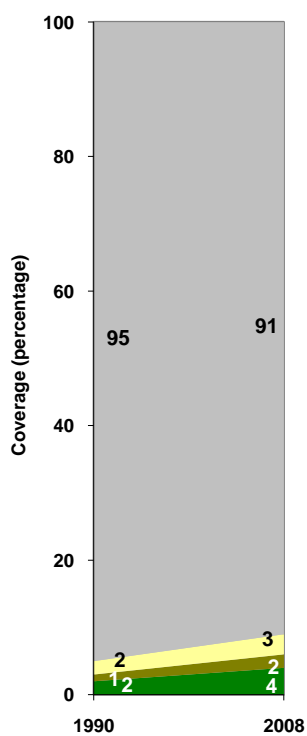
Source: UN / Population Division, 2008

Urban sanitation trends



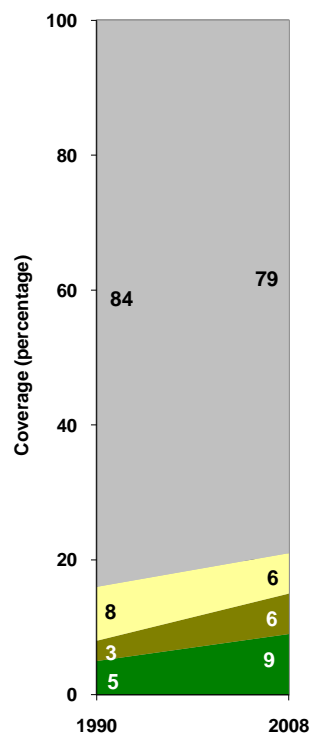
- Improved facilities
- Shared facilities
- Unimproved facilities
- Open defecation

Rural sanitation trends



- Improved facilities
- Shared facilities
- Unimproved facilities
- Open defecation

Total sanitation trends



- Improved facilities
- Shared facilities
- Unimproved facilities
- Open defecation