

**WHO / UNICEF**

**Joint Monitoring Programme**  
for Water Supply and Sanitation

Estimates for the use of

**Improved Drinking-Water Sources  
and Improved Sanitation Facilities**

Updated March 2010

[childinfo.org](http://childinfo.org)

Use of sanitation facilities		DHS92			LSMS93				
Demographic and Health Survey		Nicaragua			Living Standards Measurement Survey				
		1992			1993				
Original denomination	Classification	Urban	Rural	Total	Original denomination	Classification	Urban	Rural	Total
Toilet	<b>Flush and pour flush</b>	34.3	2.9			<b>Flush and pour flush</b>	51.0	4.0	
	to piped sewer system					to piped sewer system	40.0	0.9	
	to septic tank					to septic tank	3.7	0.7	
	to pit					to pit	4.9	1.2	
	to unknown place/ not sure/DK					to unknown place/ not sure/DK	3.0	1.2	
	to elsewhere					to elsewhere			
	<b>Flush/toilets</b>	34.3	2.9			<b>Flush/toilets</b>	45.3	3.0	
	to piped sewer system					to piped sewer system	36.7	0.6	
	to septic tank					to septic tank	1.8	0.2	
	to pit					to pit	3.8	1.0	
to unknown place/ not sure/DK					to unknown place/ not sure/DK	3.0	1.2		
to elsewhere					to elsewhere				
	<b>Private flush/toilet</b>					<b>Private flush/toilet</b>	38.4	1.6	
	to piped sewer system				Inodoro exclusivo, a la red publica	to piped sewer system	32.8	0.4	
	to septic tank				Inodoro exclusivo, a pozo septico	to septic tank	1.8	0.2	
	to pit				Inodoro exclusivo, a pozo ciego	to pit	3.8	1.0	
	to unknown place/ not sure/DK					to unknown place/ not sure/DK			
	to elsewhere					to elsewhere			
	<b>Public/shared flush/toilet</b>					<b>Public/shared flush/toilet</b>	3.9	0.2	
	to piped sewer system				Inodoro no exclusivo	to piped sewer system	3.9	0.2	
	to septic tank					to septic tank			
	to pit					to pit			
	to unknown place/ not sure/DK					to unknown place/ not sure/DK			
	to elsewhere					to elsewhere			
	<b>Latrines</b>	62.2	54.3			<b>Latrines</b>	51.2	55.9	
	<b>Pour flush latrines</b>					<b>Pour flush latrines</b>	5.7	1.0	
	to piped sewer system					to piped sewer system	3.3	0.3	
	to septic tank					to septic tank	1.3	0.5	
	to pit					to pit	1.1	0.2	
	to unknown place/ not sure/DK					to unknown place/ not sure/DK			
	to elsewhere					to elsewhere			
	<b>Private pour flush latrine</b>					<b>Private pour flush latrine</b>	5.7	1.0	
	to piped sewer system				Letrina exclusiva, a la red publica	to piped sewer system	3.3	0.3	
	to septic tank				Letrina exclusiva, a pozo septico	to septic tank	1.3	0.5	
	to pit				Letrina exclusiva, a pozo ciego	to pit	1.1	0.2	
	to unknown place/ not sure/DK					to unknown place/ not sure/DK			
	to elsewhere					to elsewhere			
	<b>Public/shared pour flush latrine</b>					<b>Public/shared pour flush latrine</b>			
	to piped sewer system					to piped sewer system			
	to septic tank					to septic tank			
	to pit					to pit			
	to unknown place/ not sure/DK					to unknown place/ not sure/DK			
	to elsewhere					to elsewhere			
	<b>Dry latrines</b>	62.2	54.3			<b>Dry latrines</b>	45.5	54.9	
	<b>Improved latrines</b>					<b>Improved latrines</b>			
	Ventilated Improved Pit latrine					Ventilated Improved Pit latrine			
	Pit latrine with slab/covered latrine					Pit latrine with slab/covered latrine			
	Traditional latrine	62.2	54.3			Traditional latrine	45.5	54.9	
	Pit latrine without slab/open pit					Pit latrine without slab/open pit			
	Hanging toilet/hanging latrine					Hanging toilet/hanging latrine			
	Bucket latrine					Bucket latrine			
	Other					Other			
	<b>Private Latrines</b>					<b>Private Latrines</b>	36.9	46.0	
	Ventilated Improved Pit latrine					Ventilated Improved Pit latrine			
	Pit latrine with slab/covered latrine				Letrina exclusiva, sin conexon	Pit latrine with slab/covered latrine			
	Traditional latrine					Traditional latrine	36.9	46.0	
	Pit latrine without slab/open pit					Pit latrine without slab/open pit			
	Hanging toilet/hanging latrine					Hanging toilet/hanging latrine			
	Bucket latrine					Bucket latrine			
	Other					Other			
	<b>Public/shared Latrines</b>					<b>Public/shared Latrines</b>	8.6	8.9	
	Ventilated Improved Pit latrine					Ventilated Improved Pit latrine			
	Pit latrine with slab/covered latrine				Letrina no exclusiva	Pit latrine with slab/covered latrine			
	Traditional latrine					Traditional latrine	8.6	8.9	
	Pit latrine without slab/open pit					Pit latrine without slab/open pit			
	Hanging toilet/hanging latrine					Hanging toilet/hanging latrine			
	Bucket latrine					Bucket latrine			
	Other					Other			
	<b>Composting toilets</b>					<b>Composting toilets</b>			
	Composting toilet (private)					Composting toilet (private)			
	Composting toilet (shared)					Composting toilet (shared)			
	<b>Other improved</b>					<b>Other improved</b>			
	Other					Other			
	Other					Other			
No facility	<b>No facility, bush, field</b>	3.5	42.8		No tiene sanitario	<b>No facility, bush, field</b>	3.4	40.7	
	<b>Other unimproved</b>					<b>Other unimproved</b>			
	Other					Other			
	Other					Other			
	<b>DK/missing information</b>					<b>DK/missing information</b>			
	<b>Total</b>	100.0	100.0			<b>Total</b>	99.9	99.6	
<b>Calculations</b>					<b>Calculations</b>				
	50% of traditional latrines considered improved	31.1	27.2			50% of traditional latrines considered improved	22.8	27.5	
<b>Estimations</b>					<b>Estimations</b>				
	SC, based on LSMS93	27.8	0.6						
<b>Access to improved sanitation :</b>		<b>65%</b>	<b>30%</b>		<b>Access to improved sanitation :</b>		<b>74%</b>	<b>31%</b>	
<b>Access to sewerage connections :</b>		<b>28%</b>	<b>1%</b>		<b>Access to sewerage connections :</b>		<b>40%</b>	<b>1%</b>	
Used for the estimates		Yes	Yes		Used for the estimates		Yes	Yes	
Used for the estimates		Yes	Yes		Used for the estimates		Yes	Yes	
<b>Ratios</b>	Shared improved facilities/all improved facilities					Shared improved facilities/all improved facilities	11.1%	14.8%	
	Improved latrine / All latrines					Improved latrine / All latrines	11%	2%	
	Covered dry latrines / All dry latrines					Covered dry latrines / All dry latrines			
	VIP / All latrines					VIP / All latrines			
	Traditional latrines / All latrines	100%	100%			Traditional latrines / All latrines	89%	98%	
	Improved + traditional latrines / All latrines					Improved + traditional latrines / All latrines	100%	100%	
	Sewerage connection among flush/pour flush					Sewerage connection among flush/pour flush	78.4	22.5	
Sewerage connection among flush					Sewerage connection among flush	81.0	20.0		
Number of people covered by the survey					Number of people covered by the survey				
Number of households covered by the survey					Number of households covered by the survey				
Total population					Total population				
<b>Comments</b>					<b>Comments</b>				



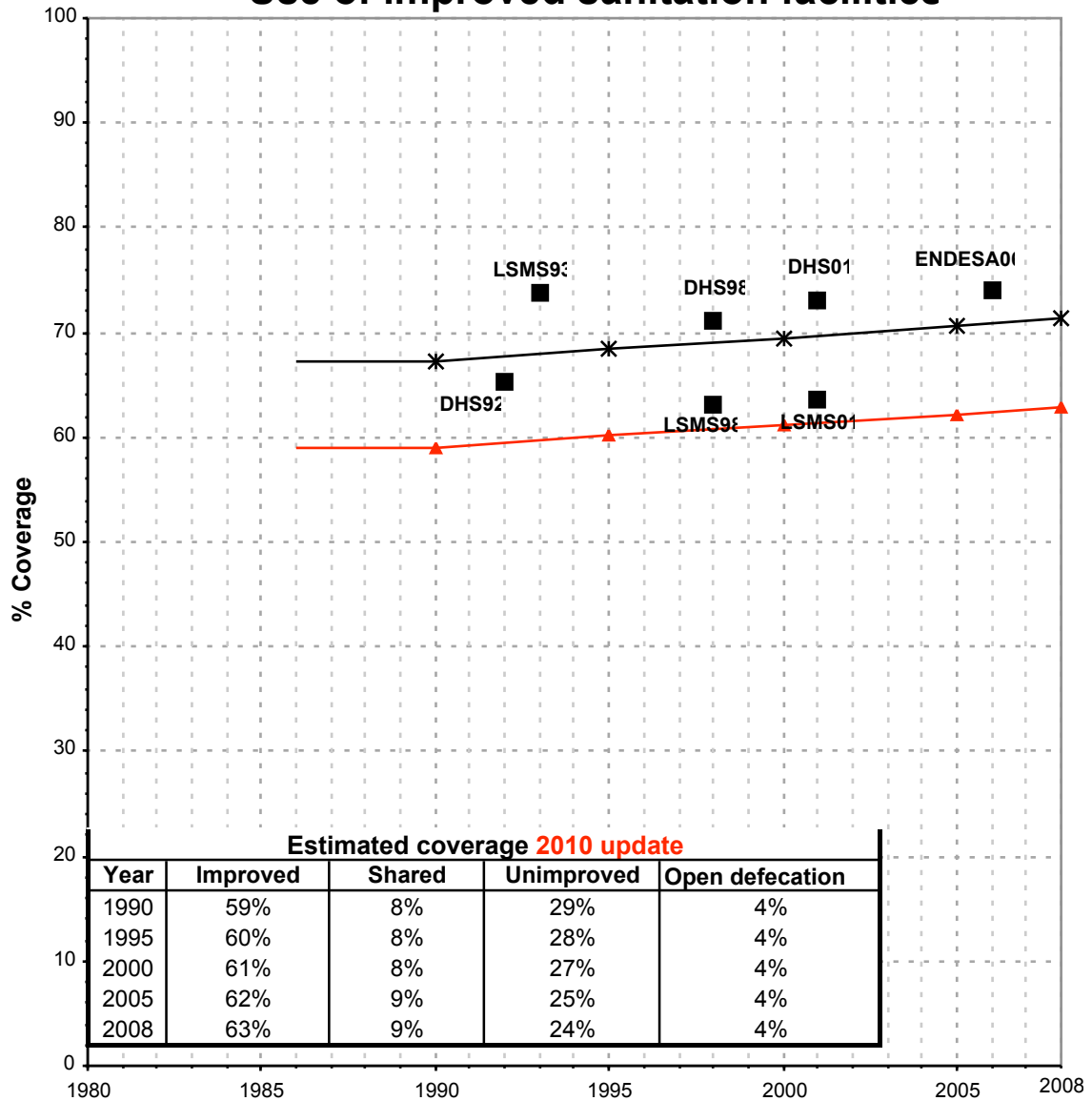






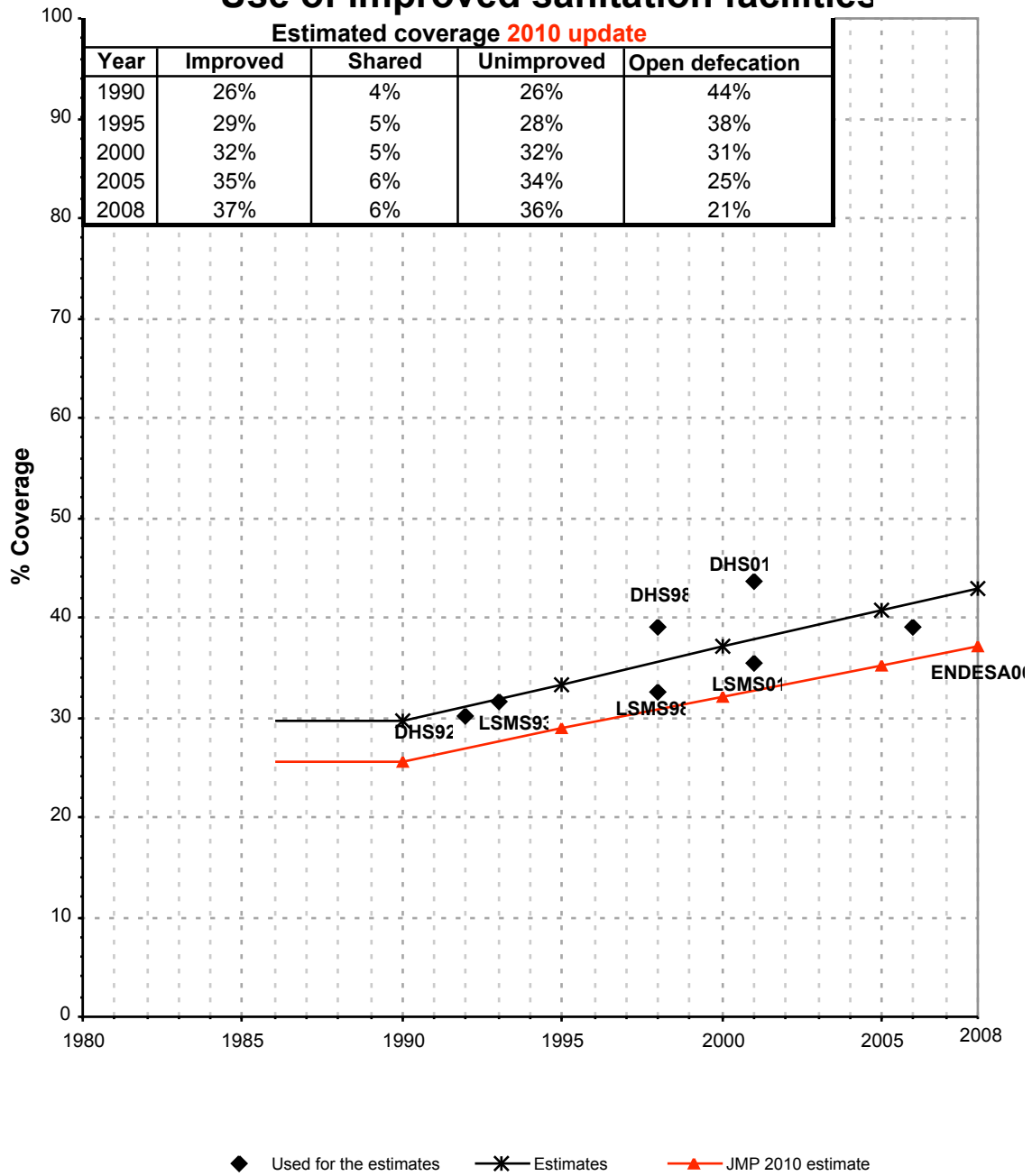
Nicaragua			SANITATION															
			URBAN								RURAL							
			Sewer connection		Total		Open defecation		Shared		Sewer connection		Total		Open defecation		Shared	
Source	Code	Year	Used	Not used	Used	Not used	Used	Not used	Used	Not used	Used	Not used	Used	Not used	Used	Not used	Used	Not used
Demographic and Health Survey	DHS92	1992	27.8		65.4		3.5				0.6		30.1		42.8			
Living Standarts Measurement Survey	LSMS93	1993	40.0		73.8		3.4		11.1		0.9		31.5		40.7		14.8	
Demographic and Health Survey	DHS98	1998	37.2		71.1		3.3				0.9		39.0		29.8			
Living Standarts Measurement Survey	LSMS98	1998	22.8		63.2		5.7		15.8		0.2		32.6		36.2		18.7	
Global Water Supply and Sanitation Assessment 2000.	JMP99	1998		32.3		93.0						0.0		56.0				
Demographic and Health Survey	DHS01	2001	30.8		73.0		3.8		6.8		0.1		43.6		30.1		7.5	
Living Standarts Measurement Survey	LSMS01	2001	23.5		63.6		5.5		14.5		0.2		35.5		30.5		13.1	
Censo, 2005	CEN05	2005				96.0								69.5				
	ENDES A06	2006	39.5		74.1		3.2				0.9		39.1		24.3			

# Nicaragua - urban - Use of improved sanitation facilities



■ Used for the estimates    \* Estimates    ▲ JMP 2010 estimate

# Nicaragua - rural - Use of improved sanitation facilities



# Sanitation

Nicaragua	Sanitation coverage estimates					
	Urban (%)		Rural (%)		Total (%)	
	1990	2008	1990	2008	1990	2008
Improved facilities	59	63	26	37	43	52
Shared facilities	8	9	4	6	6	8
Unimproved facilities	29	24	26	36	28	29
Open defecation	4	4	44	21	23	11

Source: WHO/UNICEF JMP, 2010

Nicaragua	Urban		Rural		Total	
	1990	2008	1990	2008	1990	2008
Population (x1000)	2,166	3,215	1,972	2,452	4,138	5,667

Source: UN / Population Division, 2008

