

**WHO / UNICEF**

**Joint Monitoring Programme**  
for Water Supply and Sanitation

Estimates for the use of

**Improved Drinking-Water Sources  
and Improved Sanitation Facilities**

Updated March 2010

[childinfo.org](http://childinfo.org)

Use of sanitation facilities		CEN90			Namibia			Use of sanitation facilities		DHS92			Namibia		
National Census					1990			Demographic and Health Survey					1992		
data as recorded in the Global Water Supply and Sanitation Assessment 2000. Water Supply and Sanitation Sector Questionnaire - 1999															
Original denomination	Classification	Urban	Rural	Total	Original denomination	Classification	Urban	Rural	Total						
	<b>Flush and pour flush</b>	81.8	10.0			<b>Flush and pour flush</b>	82.8	5.6							
	to piped sewer system					to piped sewer system									
	to septic tank					to septic tank									
	to pit					to pit									
	to unknown place/ not sure/DK					to unknown place/ not sure/DK									
	to elsewhere					to elsewhere									
	<b>Flush/toilets</b>	81.8	10.0			<b>Flush/toilets</b>	82.8	5.6							
	to piped sewer system					to piped sewer system									
	to septic tank					to septic tank									
	to pit					to pit									
	to unknown place/ not sure/DK					to unknown place/ not sure/DK									
	to elsewhere					to elsewhere									
Water Closet Own	<b>Private flush/toilet</b>	65.4	6.5		Own flush toilet	<b>Private flush/toilet</b>	82.8	5.6							
	to piped sewer system					to piped sewer system									
	to septic tank					to septic tank									
	to pit					to pit									
	to unknown place/ not sure/DK					to unknown place/ not sure/DK									
	to elsewhere					to elsewhere									
Water Closet Shared	<b>Public/shared flush/toilet</b>	16.4	3.5			<b>Public/shared flush/toilet</b>									
	to piped sewer system					to piped sewer system									
	to septic tank					to septic tank									
	to pit					to pit									
	to unknown place/ not sure/DK					to unknown place/ not sure/DK									
	to elsewhere					to elsewhere									
	<b>Latrines</b>	5.4	7.3			<b>Latrines</b>	5.8	10.0							
	<b>Pour flush latrines</b>					<b>Pour flush latrines</b>									
	to piped sewer system					to piped sewer system									
	to septic tank					to septic tank									
	to pit					to pit									
	to unknown place/ not sure/DK					to unknown place/ not sure/DK									
	to elsewhere					to elsewhere									
	<b>Private pour flush latrine</b>					<b>Private pour flush latrine</b>									
	to piped sewer system					to piped sewer system									
	to septic tank					to septic tank									
	to pit					to pit									
	to unknown place/ not sure/DK					to unknown place/ not sure/DK									
	to elsewhere					to elsewhere									
	<b>Public/shared pour flush latrine</b>					<b>Public/shared pour flush latrine</b>									
	to piped sewer system					to piped sewer system									
	to septic tank					to septic tank									
	to pit					to pit									
	to unknown place/ not sure/DK					to unknown place/ not sure/DK									
	to elsewhere					to elsewhere									
	<b>Dry latrines</b>	5.4	7.3			<b>Dry latrines</b>	5.8	10.0							
	<b>Improved latrines</b>					<b>Improved latrines</b>	0.6	0.4							
	Ventilated Improved Pit latrine				Ventilated improved pit latrine	Ventilated Improved Pit latrine	0.6	0.4							
	Pit latrine with slab/covered latrine				Traditional pit toilet	Pit latrine with slab/covered latrine									
Pit*	Traditional latrine	2.5	4.5			Traditional latrine	2.7	7.8							
	Pit latrine without slab/open pit					Pit latrine without slab/open pit									
	Hanging toilet/hanging latrine					Hanging toilet/hanging latrine									
Bucket/Pail	Bucket latrine	2.9	2.8		Bucket	Bucket latrine	2.5	1.8							
	Other					Other									
	<b>Private Latrines</b>					<b>Private Latrines</b>									
	Ventilated Improved Pit latrine					Ventilated Improved Pit latrine									
	Pit latrine with slab/covered latrine					Pit latrine with slab/covered latrine									
	Traditional latrine					Traditional latrine									
	Pit latrine without slab/open pit					Pit latrine without slab/open pit									
	Hanging toilet/hanging latrine					Hanging toilet/hanging latrine									
	Bucket latrine					Bucket latrine									
	Other					Other									
	<b>Public/shared Latrines</b>					<b>Public/shared Latrines</b>									
	Ventilated Improved Pit latrine					Ventilated Improved Pit latrine									
	Pit latrine with slab/covered latrine					Pit latrine with slab/covered latrine									
	Traditional latrine					Traditional latrine									
	Pit latrine without slab/open pit					Pit latrine without slab/open pit									
	Hanging toilet/hanging latrine					Hanging toilet/hanging latrine									
	Bucket latrine					Bucket latrine									
	Other					Other									
	<b>Composting toilets</b>					<b>Composting toilets</b>									
	Composting toilet (private)					Composting toilet (private)									
	Composting toilet (shared)					Composting toilet (shared)									
	<b>Other improved</b>					<b>Other improved</b>									
	Other					Other									
	Other					Other									
Bush	<b>No facility, bush, field</b>	12.4	82.4		No facility/ bush	<b>No facility, bush, field</b>	11.1	84.2							
	<b>Other unimproved</b>					<b>Other unimproved</b>	0.0	0.0							
	Other				Other	Other	0.0	0.0							
	Other					Other									
Not Defined	<b>DK/missing information</b>	0.4	0.3		Missing info.	<b>DK/missing information</b>	0.3	0.2							
	<b>Total</b>	100.0	100.0			<b>Total</b>	100.0	100.0							
<b>Calculations</b>					<b>Calculations</b>										
<b>Estimations</b>	50% of traditional latrines considered improved	1.3	2.3		<b>Estimations</b>	50% of traditional latrines considered improved	1.4	3.9							
	Improved latrines based on WHS03														
	SC, based on WHS03	73.7	8.7			SC, based on WHS03	74.6	4.8							
<b>Access to improved sanitation :</b>		<b>83%</b>	<b>12%</b>		<b>Access to improved sanitation :</b>		<b>85%</b>	<b>10%</b>							
<b>Access to sewerage connections :</b>		<b>74%</b>	<b>9%</b>		<b>Access to sewerage connections :</b>		<b>75%</b>	<b>5%</b>							
Used for the estimates:		Yes	Yes		Used for the estimates:		Yes	Yes							
Used for the estimates:		Yes	Yes		Used for the estimates:		Yes	Yes							
<b>Ratios</b>	Shared improved facilities/all improved facilities				<b>Ratios</b>	Shared improved facilities/all improved facilities									
	Improved latrine / All latrines					Improved latrine / All latrines	10%	4%							
	Covered dry latrines / All dry latrines					Covered dry latrines / All dry latrines									
	VIP / All latrines					VIP / All latrines	10%	4%							
	Traditional latrines / All latrines	46%	62%			Traditional latrines / All latrines	47%	78%							
	Improved + traditional latrines / All latrines					Improved + traditional latrines / All latrines	57%	82%							
	Sewerage connection among flush/pour flush					Sewerage connection among flush/pour flush									
	Sewerage connection among flush					Sewerage connection among flush									
Number of people covered by the survey:					Number of people covered by the survey:										
Number of households covered by the survey:					Number of households covered by the survey:										
Total population:		382.68	1027.2		Total population:										
<b>Comments</b>					<b>Comments</b>										

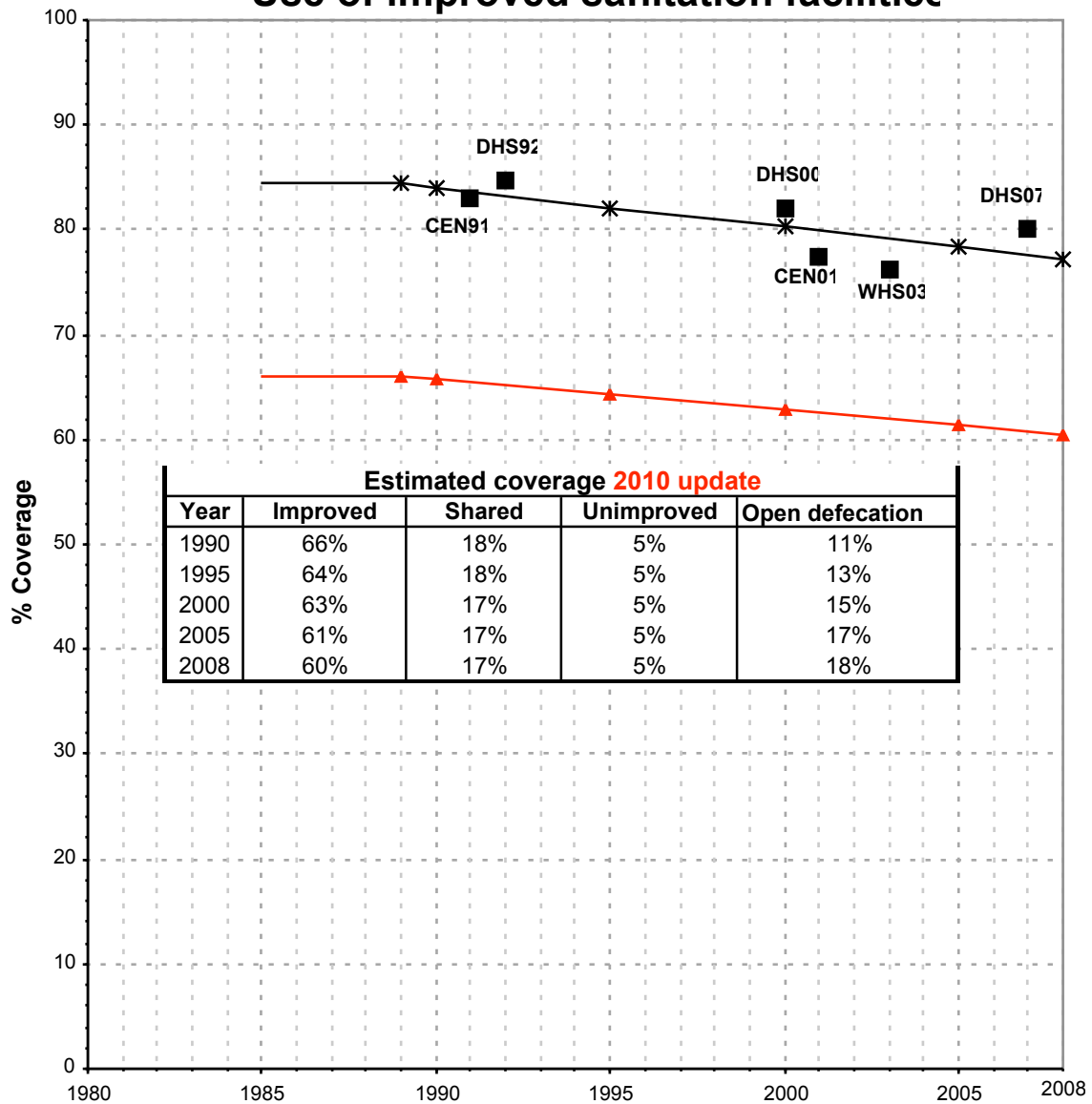






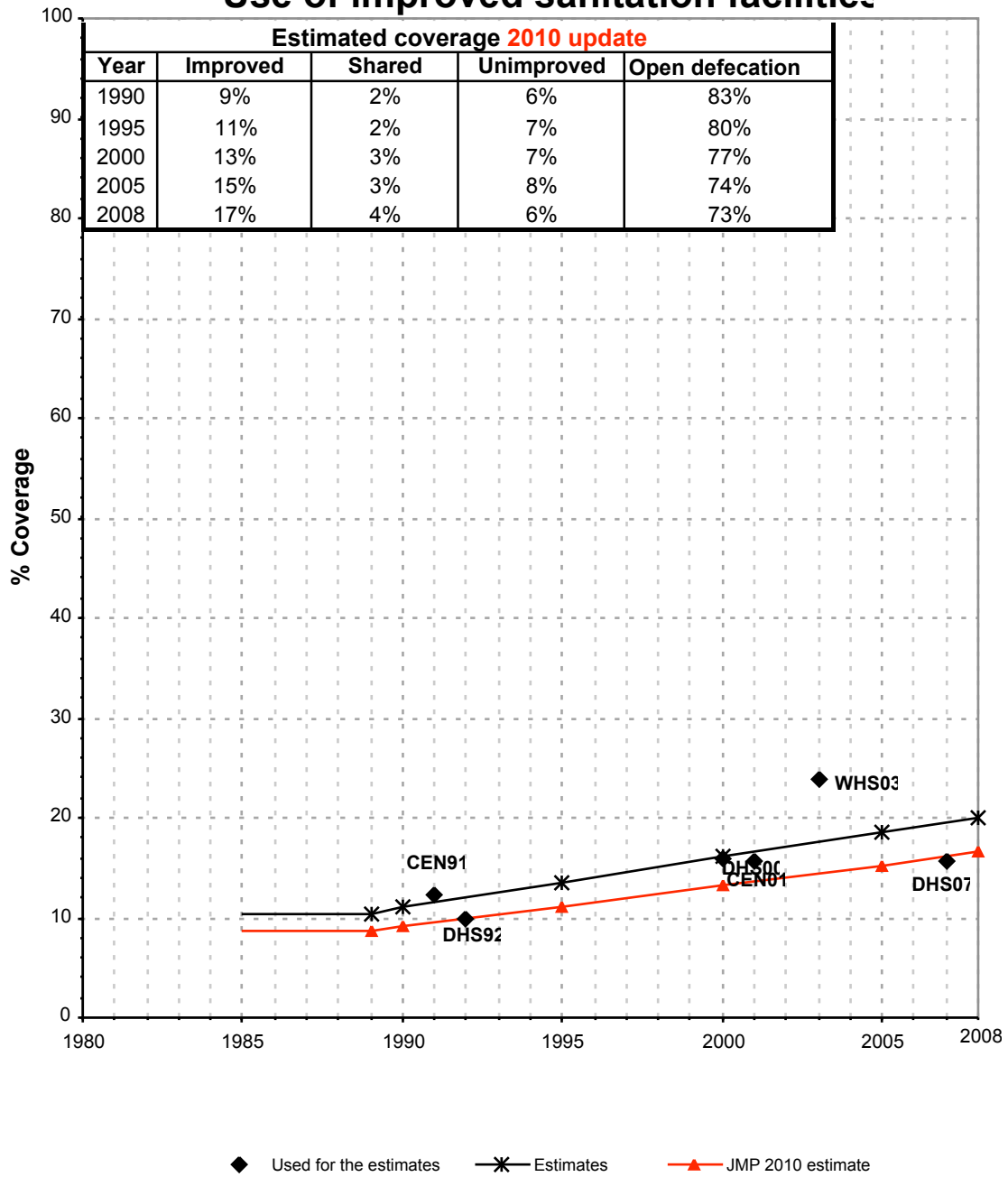
Namibia			SANITATION															
			URBAN								RURAL							
			Sewer connection		Total		Open defecation		Shared		Sewer connection		Total		Open defecation		Shared	
Source	Code	Year	Used	Not used	Used	Not used	Used	Not used	Used	Not used	Used	Not used	Used	Not used	Used	Not used	Used	Not used
National Census	CEN91	1991	73.7		83.1		12.4				8.7		12.3		82.4			
Demographic and Health Survey	DHS92	1992	74.6		84.8		11.1				4.8		9.9		84.2			
Global Water Supply and Sanitation Assessment 2000.	JMP99	1999		84.2		96.2						0.0		17.3				
Demographic and Health Survey	DHS00	2000	69.8		82.1		11.4		28.6		8.0		16.0		78.5		20.7	
Census	CEN01	2001	65.3		77.5		17.4				8.2		15.6		78.3			
World Health Survey	WHS03	2003	62.2		76.2		20.5		13.9		14.0		23.9		64.8		17.1	
Household Income and Expenditure Survey	NHIE04	2004																
Demographic and Health Survey	DHS07	2007	73.0		80.2		15.7		22.9		6.3		15.6		79.7		15.0	

# Namibia - urban - Use of improved sanitation facilities



■ Used for the estimates    \*— Estimates    ▲ JMP 2010 estimate

# Namibia - rural - Use of improved sanitation facilities



# Sanitation

Namibia	Sanitation coverage estimates					
	Urban (%)		Rural (%)		Total (%)	
	1990	2008	1990	2008	1990	2008
Improved facilities	66	60	9	17	25	33
Shared facilities	18	17	2	4	6	9
Unimproved facilities	5	5	6	6	6	5
Open defecation	11	18	83	73	63	53

Source: WHO/UNICEF JMP, 2010

Namibia	Urban		Rural		Total	
	1990	2008	1990	2008	1990	2008
Population (x1000)	392	784	1,025	1,346	1,417	2,130

Source: UN / Population Division, 2008

